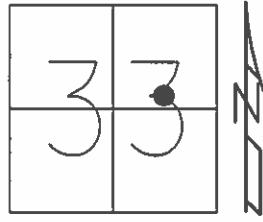


O.D.O.T. DISTRICT 2 SURVEY OFFICE (USE ONLY)

PERSONNEL _____ REFERENCE NO. 13 SHEET 13 OF 39
 NOTES RHOADES DATE 6/26/14 ROUTE SR 224
 H.C. HOMAN WEATHER OVERCAST COUNTY SENECA
 R.C. LEU TEMP. 70° TOWNSHIP LOUDON
 THOMAS SECTION 33
 MEYER T 2 N R 13 E

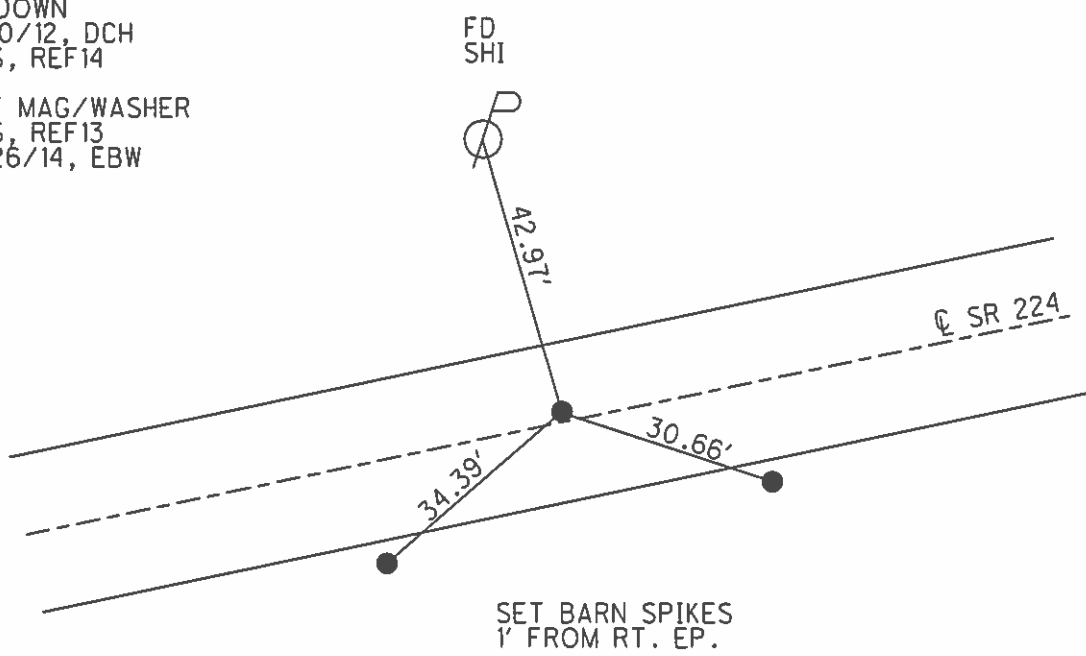
TYPE MONUMENT P.K./WASHER
~~ON SURFACE~~ - BELOW 6"
 LEFT - ☉ PAV'T - ~~RIGHT~~ 1.2'
 - TO - EDGE PAVEMENT
 S.L.M. 145+22.78
 Grid: Northing: 518624.443 Easting: 1728912.381



RECORD: P.I.
 $\Delta = 01^{\circ}11'$ RT
 11/27/63, KRABILL

 FD P.K. NAIL
 6" DOWN
 2/10/12, DCH
 GPS, REF14

 SET MAG/WASHER
 GPS, REF13
 6/26/14, EBW



PERSONNEL TITLE PERSONNEL TITLE

COUNTY Seneca DATE 3-22-71

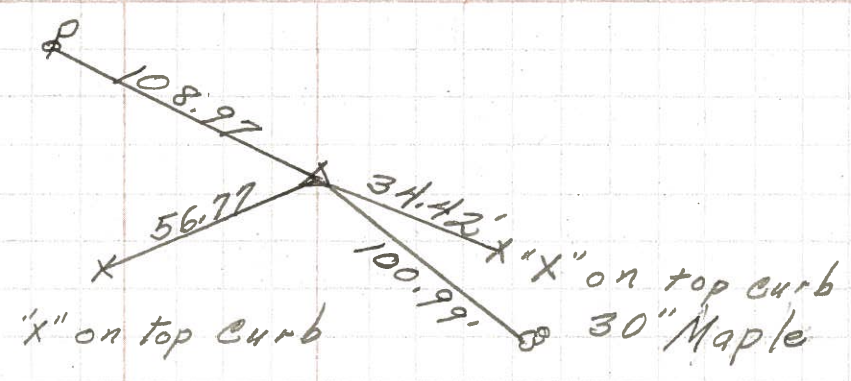
S. R. U.S. 224 WEATHER Cloudy

SEC. 0.00 TEMP. 40°

DESCRIPTION Hancock Co. Line to Tiffin LEFT CENTER LINE RIGHT JOB NO.

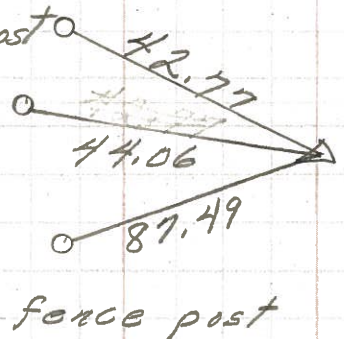
16

P.I.
193+90.20
Approx. 85' E. of
intersection S.R. 587
 $\Delta = 0^\circ 48' \text{ Rt.}$
R.R. spk.



15

8562
177+00.6
 $\Delta = 1^\circ 31' \text{ Lt.}$
R.R. spk.

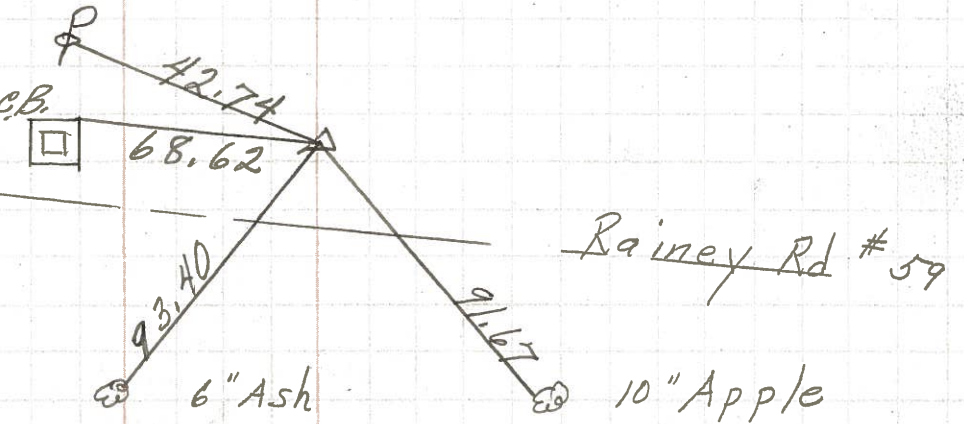


1' Rt. of ϕ



14

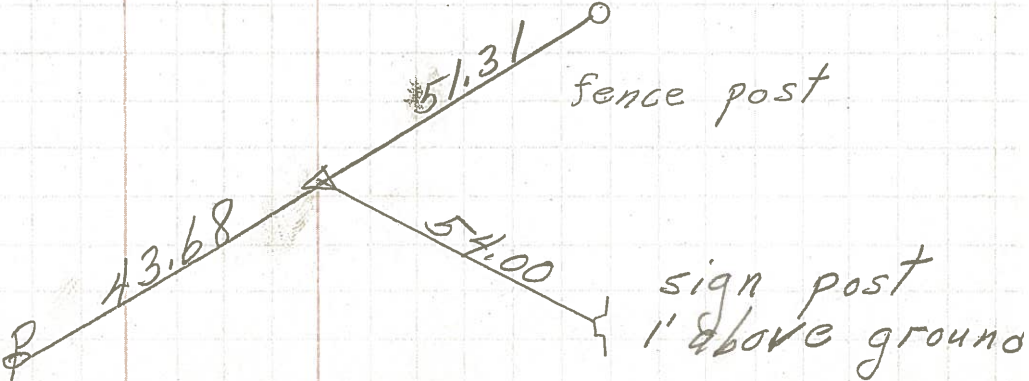
163+77.97 s.E. cor. C.B.
 $\Delta = 0^\circ 22' \text{ Rt.}$
33'± East of
intersection
R.R. spk.



8560

13

145+24.70
 $\Delta = 1^\circ 11' \text{ Rt.}$
R.R. spk.



8559

PERSONNEL	TITLE	PERSONNEL	TITLE	COUNTY	DATE
E. Krabill				Seneca	
J. Kowaleski				S. R. 224	WEATHER
Brooks				SEC.	TEMP.

DESCRIPTION	LEFT	CENTER LINE	RIGHT	JOB NO.
115+00.4 P.I. 4-0°-08' LT. R.R. spike 11-27-63	#595 11	shiner in 5" Ash clump 44.17' 103.55' shiner in 16" Apple	43.38' Near edge of sign post stk. 1' above ground. 54.61' Near edge of sign post stk. 1' above ground	
126+33.54 P.I. 4-0°-35' LT. R.R. spike 11-27-63	#596 12	shiner in cor of CIDER PRESS SHED. 45.18'	51.45' Near edge of sign post stk. 1' above ground. 39.98' shiner in corner fence post. 64.71' shiner in 18" Maple	
145+24.70 P.I. 4-01°-11' RT. R.R. spike 11-27-63	#597 13	shiner in fence Post 49.21' Near edge of sign Post 1' above ground 38.71' 43.70'	42.58' shiner in pear 53.97' Near edge of sign post stk 1' above ground	
163+77.97 P.I. 4-0°-22' RT. Raney Rd #59 33+00 E. of intersection R.R. spike 11-27-63	#598 14	Near edge of sign stake 1' above ground 42.73' 42.74' 93.60' shiner in 6" cottonwood	71.90' shiner in 10" apple	