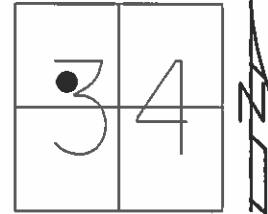


O.D.O.T. DISTRICT 2 SURVEY OFFICE (USE ONLY)

PERSONNEL _____ REFERENCE NO. 15 SHEET 15 OF 39
 NOTES RHOADES DATE 6/26/14 ROUTE SR 224
 H.C. HOMAN WEATHER OVERCAST COUNTY SENECA
 R.C. LEU TEMP. 70° TOWNSHIP LOUDON
THOMAS SECTION 34
MEYER T 2 N R 13 E

TYPE MONUMENT P.K./NAIL
~~ON SURFACE~~ - BELOW 4"
~~LEFT~~ - ☉ PAV'T - RIGHT 1.0'
- TO - EDGE PAVEMENT
 S.L.M. 176+96.14



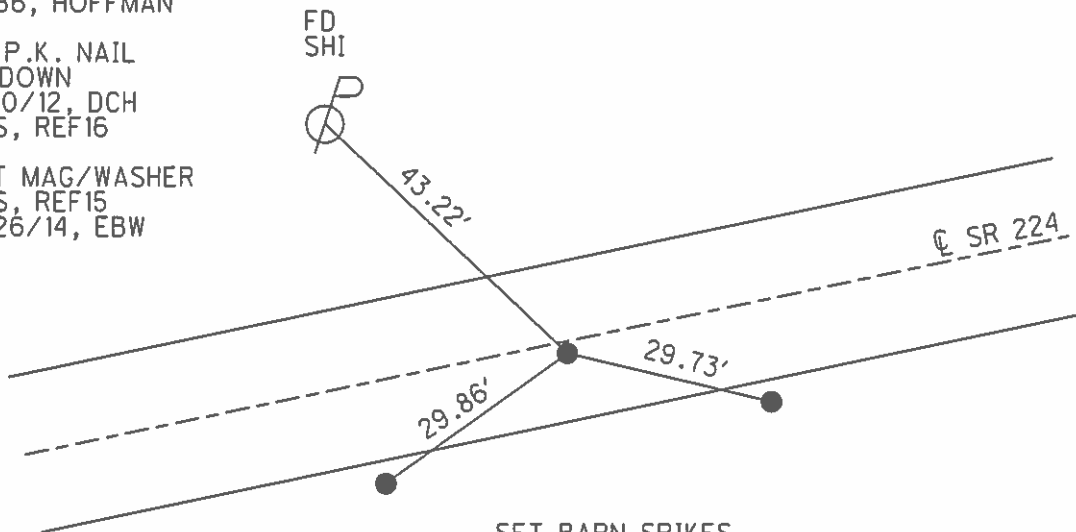
Grid: Northing: 519193.277 Easting: 1732034.054

RECORD: P.J.
 $\Delta = 01^{\circ}31' \text{ LT}$
 FD R.R. SPIKE
 12/3/63, KRABILL

FD P.K./WASHER
 AT SURFACE
 1' RT ☉
 11/86, HOFFMAN

FD P.K. NAIL
 4" DOWN
 2/10/12, DCH
 GPS, REF16

SET MAG/WASHER
 GPS, REF15
 6/26/14, EBW

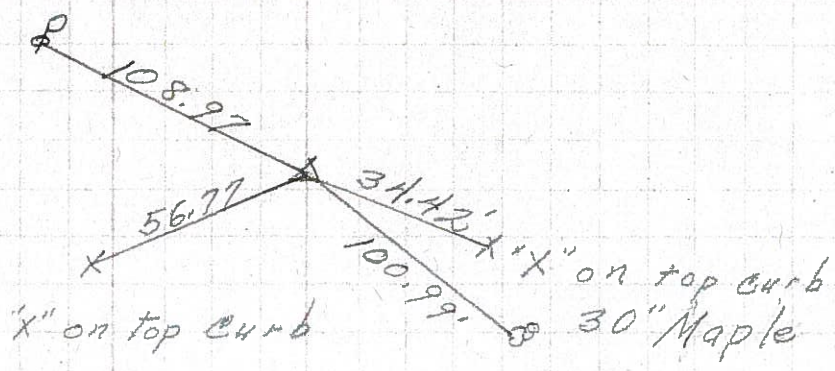


SET BARN SPIKES
 1' FROM RT. EP.

PERSONNEL	TITLE	PERSONNEL	TITLE	COUNTY	DATE	S. R.	WEATHER	TEMP.	DESCRIPTION	JOB NO.
				Seneca	3-22-71	U.S. 224	Cloudy	40°	Hancock Co. Line to Tiffin	

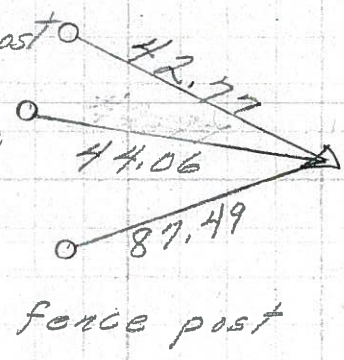
16

P.I.
 193+90.20
 Approx. 85' E. of
 intersection S.R. 587
 $\Delta = 0^\circ 48'$ Rt.
 R.R. Spk.



15

8562
 177+00.6
 $\Delta = 1^\circ 31'$ Lt.
 R.R. Spk.

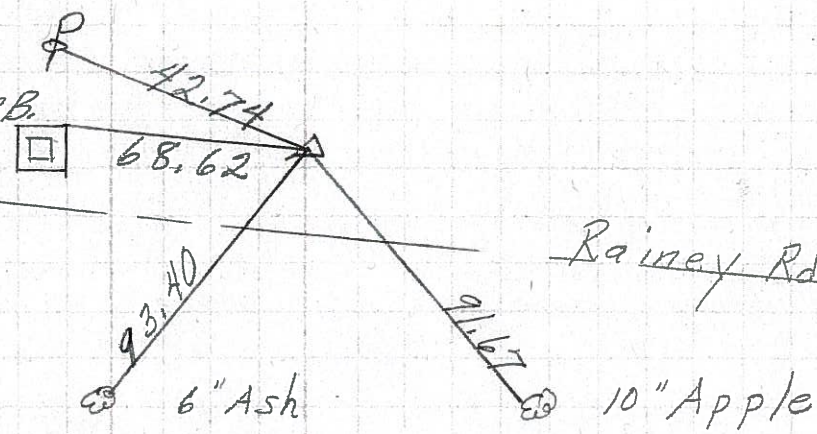


1' Rt. of ϵ



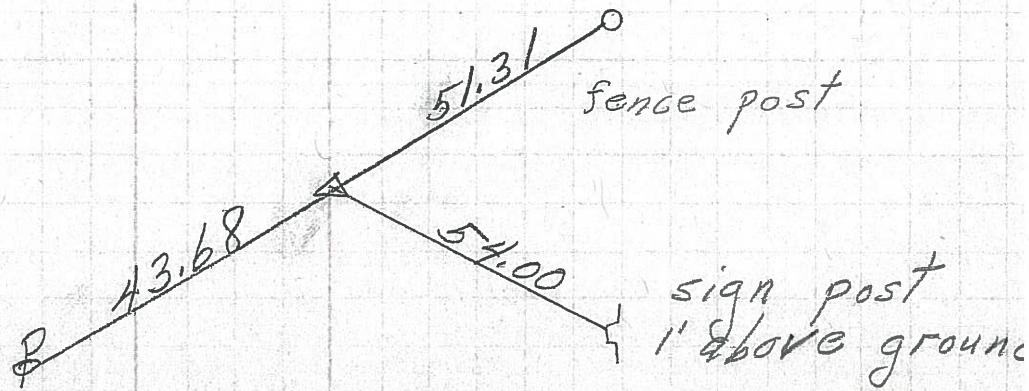
14

163+77.97 S.E. cor. C.B.
 $\Delta = 0^\circ 22'$ Rt.
 33'± East of
 intersection
 R.R. Spk.



13

145+24.70
 $\Delta = 1^\circ 11'$ Rt.
 R.R. Spk.



8560

8559

PERSONNEL TITLE PERSONNEL TITLE

E. Krabill
F. Kowalski
Brooks

COUNTY Seneca

DATE

S. R. 224

WEATHER

SEC.

TEMP.

DESCRIPTION

LEFT

CENTER LINE

RIGHT

JOB NO.

