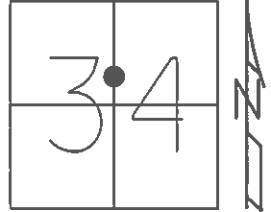


O.D.O.T. DISTRICT 2 SURVEY OFFICE (USE ONLY)

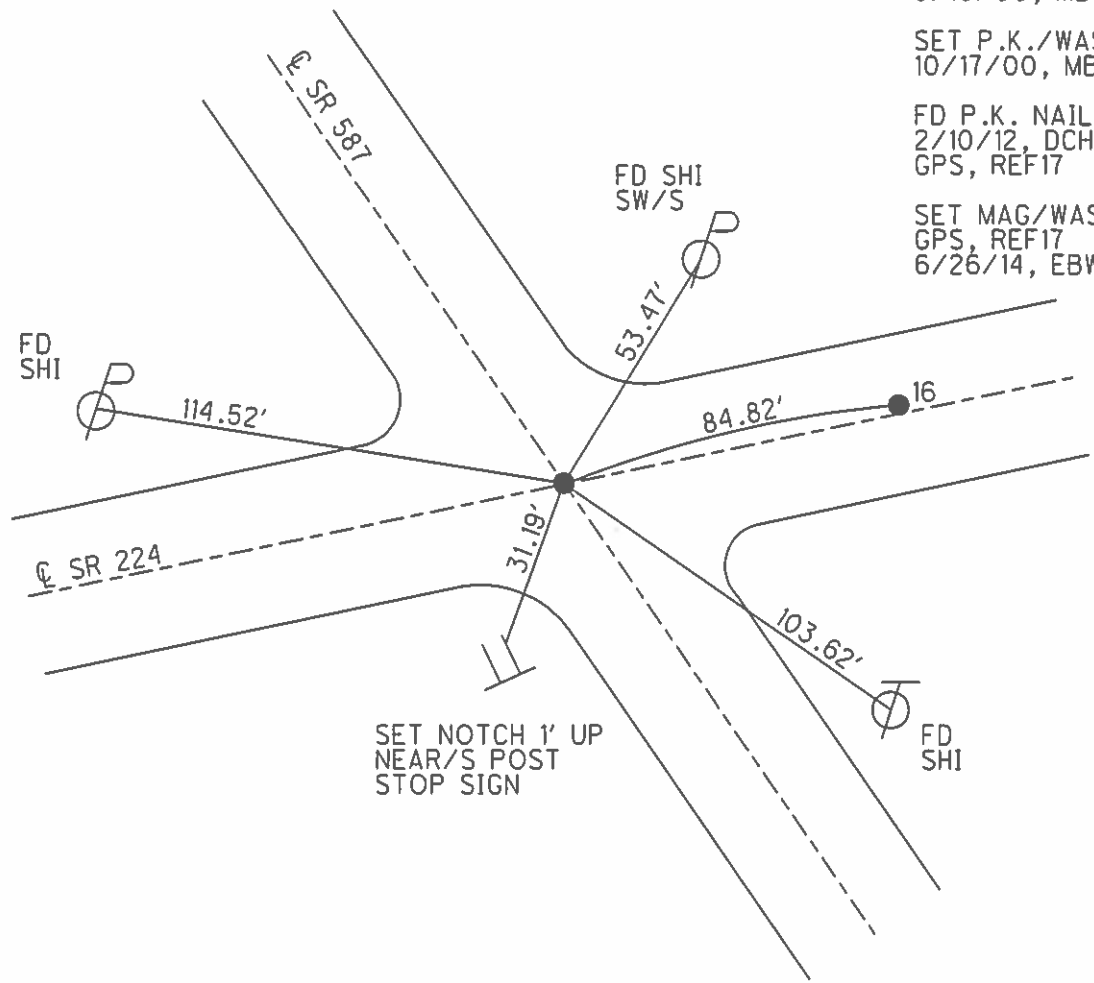
PERSONNEL \_\_\_\_\_ REFERENCE NO. 15 A SHEET 16 OF 39  
 NOTES RHOADES DATE 6/11/13 ROUTE SR 224  
 H.C. ROUSOS WEATHER CLOUDY COUNTY SENECA  
 R.C. WESTFALL TEMP. 73° TOWNSHIP LOUDON  
 \_\_\_\_\_ SECTION 34  
 \_\_\_\_\_ T 2 N R 13 E

TYPE MONUMENT P.K./WASHER  
 ON SURFACE - ~~BELOW~~ ON \_\_\_\_\_  
 LEFT - ☉ PAV'T - RIGHT ON \_\_\_\_\_  
 - TO - EDGE PAVEMENT  
 S.L.M. 192+29.74



Grid: Northing: 519502.211 Easting: 1733536.418

RECORD:  
 FD P.K./WASHER  
 9/10/00, MB  
 SET P.K./WASHER  
 10/17/00, MB  
 FD P.K. NAIL  
 2/10/12, DCH  
 GPS, REF17  
 SET MAG/WASHER  
 GPS, REF17  
 6/26/14, EBW



# O.D.O.T. DISTRICT 2 SURVEY OFFICE

PERSONNEL \_\_\_\_\_

REFERENCE NO. \_\_\_\_\_

SHEET 1 OF 1

NOTES BARNHISEL

H.C. CANTERBURY

R.C. BARNHISEL

DATE 9-10-00

WEATHER FAIR

TEMP. +70°

ROUTE US 224 / S.R. 587

COUNTY SENECA

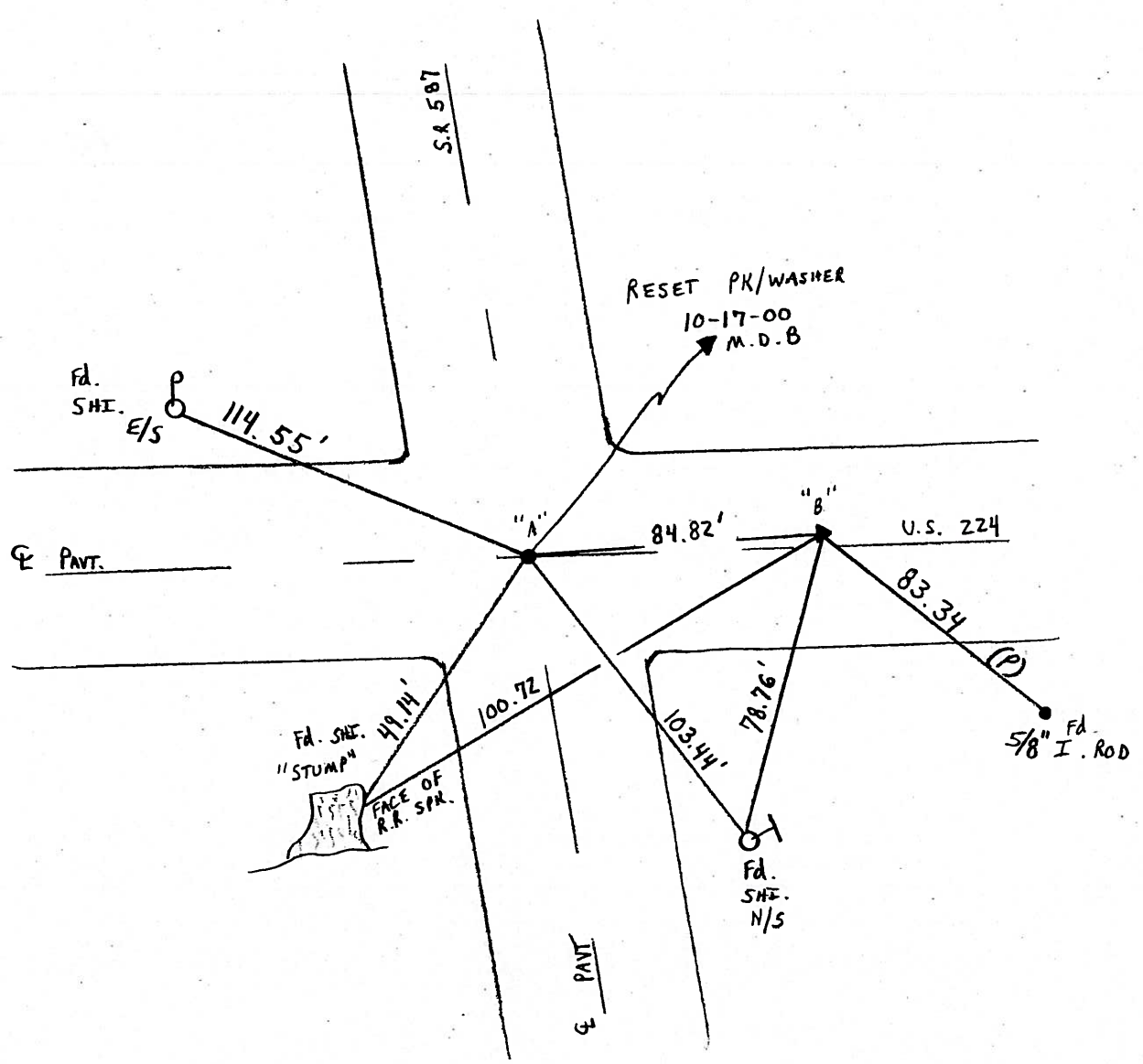
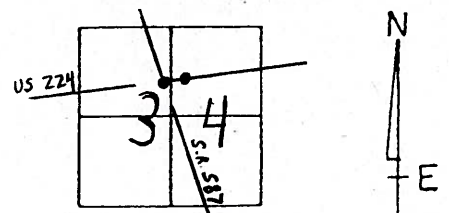
TOWNSHIP LOUDON

SECTION 34

T 2 N R 13 E

	PT "A"	PT "B"
TYPE MONUMENT	P.K. + WASHER	P.K. + WASHER
ON SURFACE - <del>BELOW</del> SURFACE	<del>BELOW</del> SURFACE	SURFACE
LEFT - $\phi$ PAV'T. - RIGHT	ON $\phi$ BOTH	0.5' LT & US 224
TO _____	EDGE PAVEMENT	11.6' TO LT E.O.P.
S.L.M.	<u>427+43.52 S.R. 587</u>	<u>193+18.05 U.S. 224</u>

15-A





PERSONNEL TITLE PERSONNEL TITLE

RIPPLE  
BARBOUR  
GEYMAN

COUNTY \_\_\_\_\_ DATE 6/23/88

S. R. # 224 WEATHER SUNNY

SEC. \_\_\_\_\_ TEMP. 70°

DESCRIPTION LEFT CENTER LINE RIGHT JOB NO. \_\_\_\_\_

