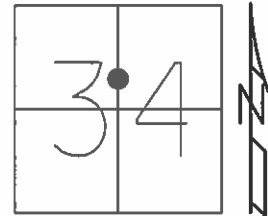


O.D.O.T. DISTRICT 2 SURVEY OFFICE (USE ONLY)

PERSONNEL \_\_\_\_\_ REFERENCE NO. 16 SHEET 17 OF 39  
 NOTES RHOADES DATE 6/11/13 ROUTE SR 224  
 H.C. ROUSOS WEATHER CLOUDY COUNTY SENECA  
 R.C. WESTFALL TEMP. 73° TOWNSHIP LOUDON  
 \_\_\_\_\_ SECTION 34  
 \_\_\_\_\_ T 2 N R 13 E

TYPE MONUMENT P.K./WASHER  
~~ON SURFACE~~ - BELOW 4"  
 LEFT - ☉ PAV'T - ~~RIGHT~~ 0.5'  
11.6' TO LT EDGE PAVEMENT  
 S.L.M. 193+14.49

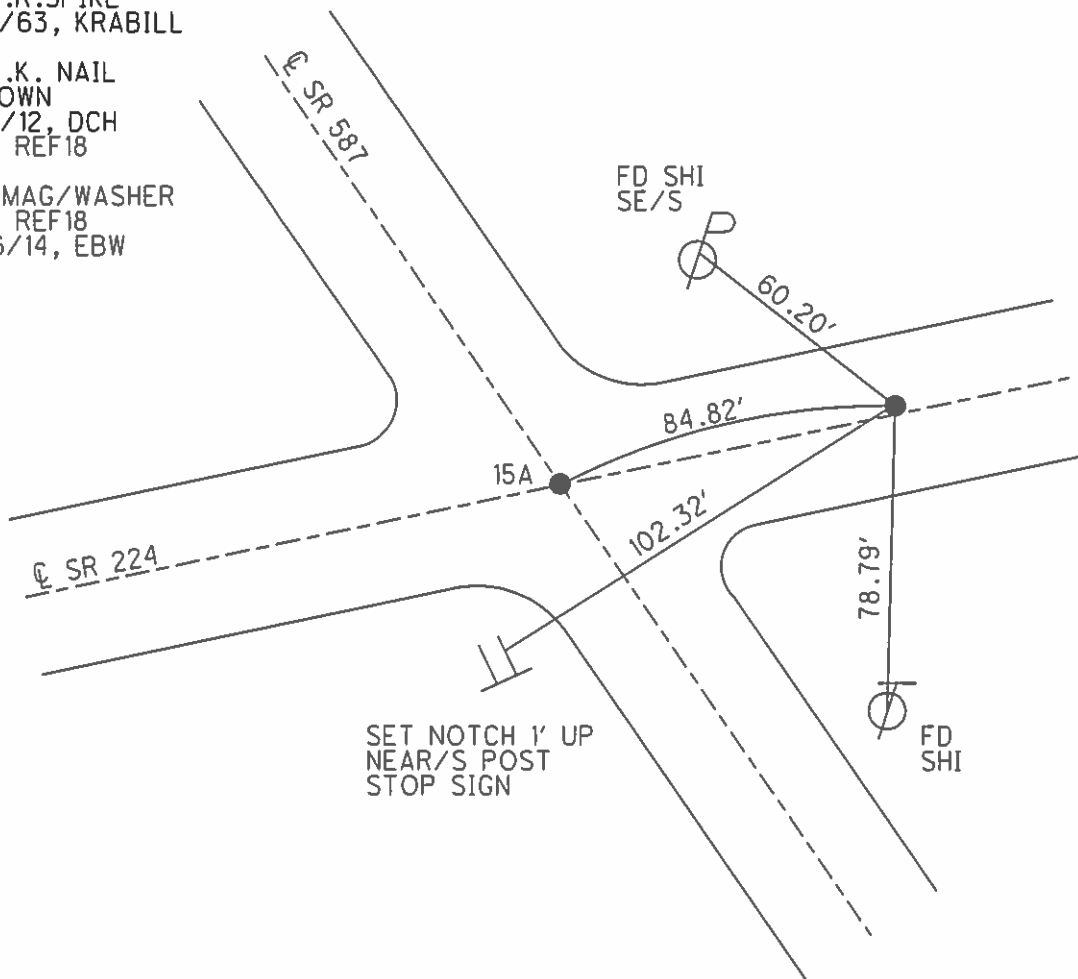


Grid: Northing: 519519.164 Easting: 1733619.552

RECORD: P.I.  
 $\Delta = 0^\circ 48' \text{ RT}$   
 FD R.R. SPIKE  
 12/3/63, KRABILL

FD P.K. NAIL  
 4" DOWN  
 2/10/12, DCH  
 GPS, REF18

SET MAG/WASHER  
 GPS, REF18  
 6/26/14, EBW



# O.D.O.T. DISTRICT 2 SURVEY OFFICE

PERSONNEL \_\_\_\_\_

REFERENCE NO. \_\_\_\_\_

SHEET 1 OF 1

NOTES BARNHISEL

H.C. CANTERBURY

R.C. BARNHISEL

DATE 9-10-00

WEATHER FAIR

TEMP. +70°

ROUTE US 224/S.R. 587

COUNTY SENECA

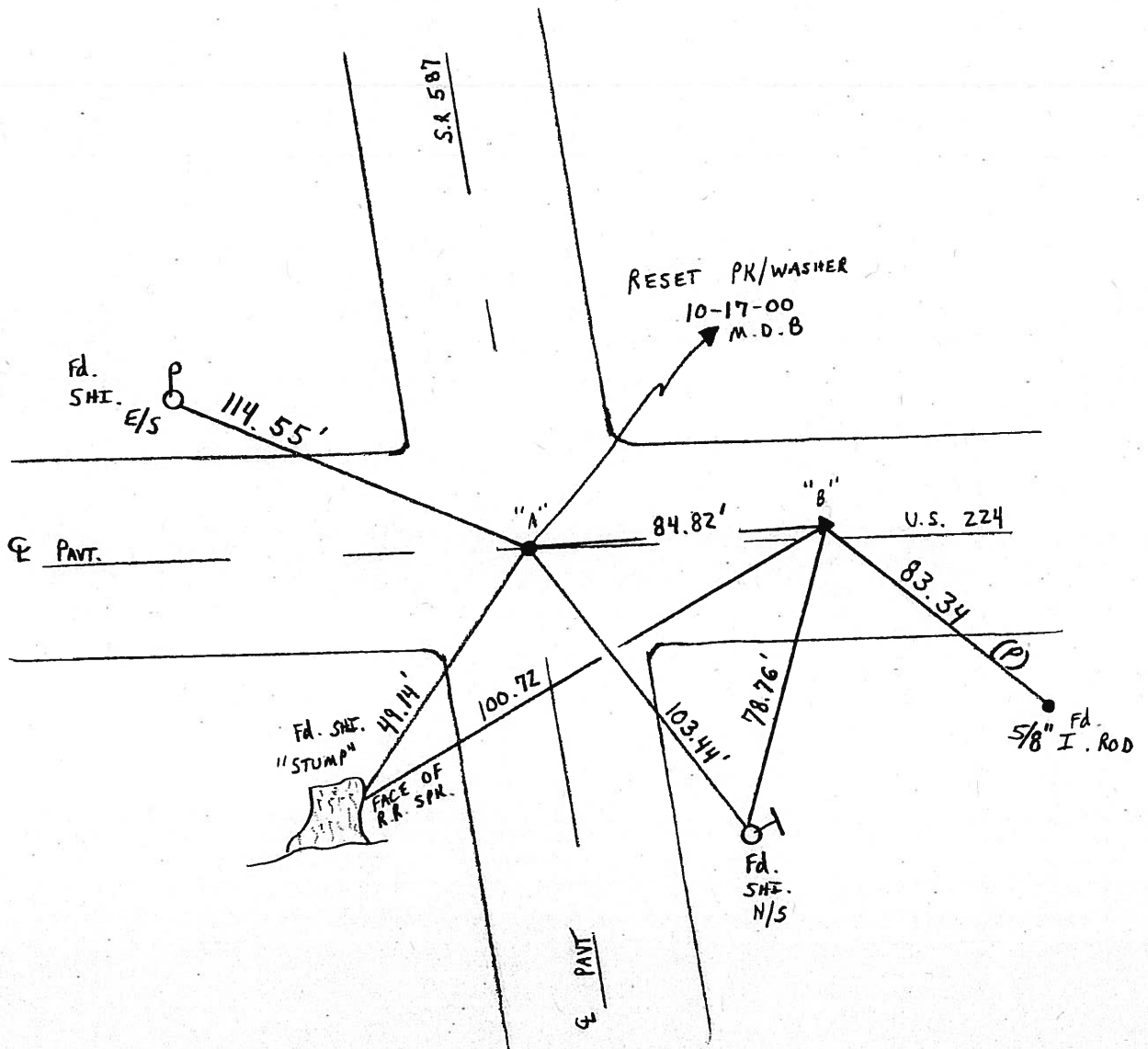
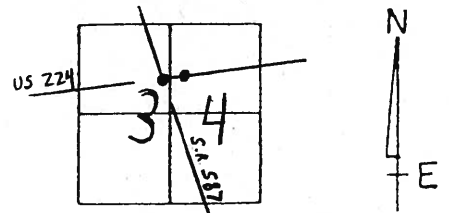
TOWNSHIP LOUDON

SECTION 34

T 2 N 13 E

	PT "A"	PT "B"
TYPE MONUMENT	P.K. + WASHER	P.K. + WASHER
ON SURFACE - <del>BELOW</del> SURFACE	<del>BELOW</del> SURFACE	SURFACE
LEFT - $\odot$ PAV'T. - RIGHT	ON $\&$ BOTH	0.5' LT $\&$ US 224
TO _____ EDGE PAVEMENT		11.6' TO LT E.O.P.
S.L.M.	427+43.52 S.R. 587	193+18.05 U.S. 224

16

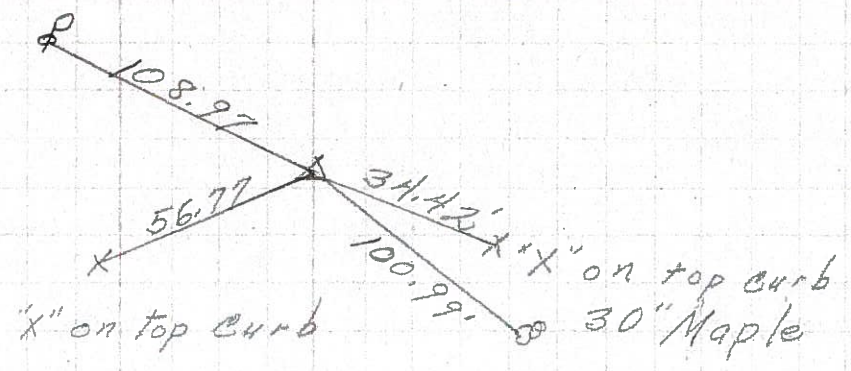




PERSONNEL	TITLE	PERSONNEL	TITLE
COUNTY <u>Seneca</u>		DATE <u>3-22-71</u>	
S. R. <u>U.S. 224</u>		WEATHER <u>Cloudy</u>	
SEC. <u>0.00</u>		TEMP. <u>40°</u>	
DESCRIPTION <u>Hancock Co. Line to Tiffin</u>			JOB NO.
	LEFT	CENTER LINE	RIGHT

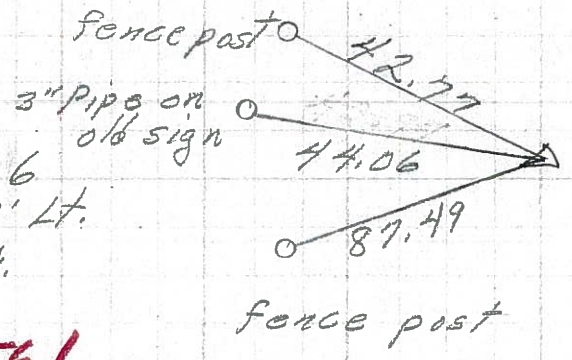
16

P.I.  
 193+90.20  
 Approx. 85' E. of  
 intersection SR. 587  
 $\Delta = 0^{\circ} 48' \text{ Rt.}$   
 R.R. spk.



15

**8562**  
 177+00.6  
 $\Delta = 1^{\circ} 31' \text{ Lt.}$   
 R.R. spk.

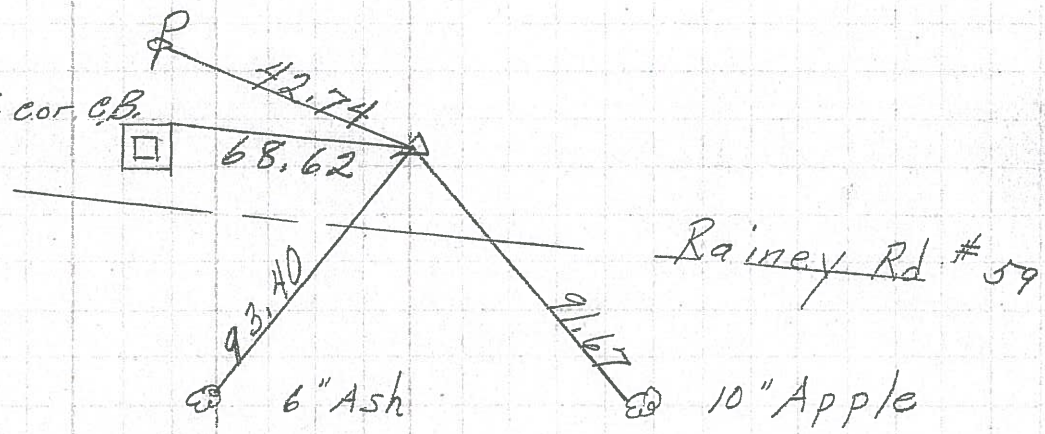


1' Rt. of E



14

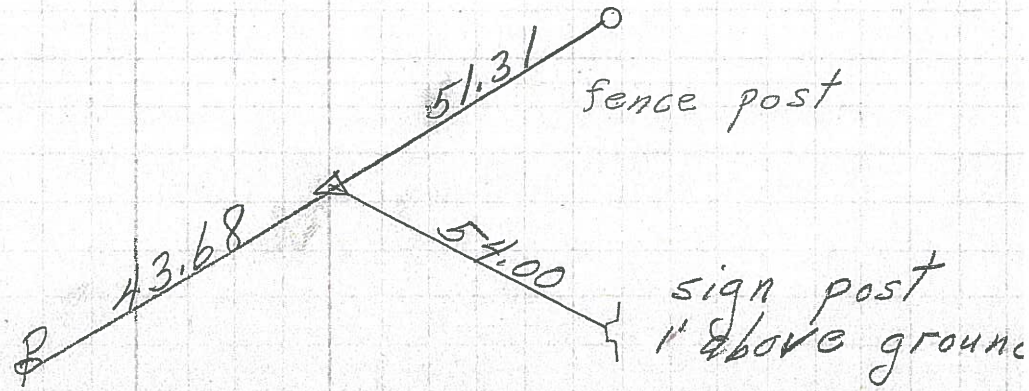
163+77.97 S.E. cor. C.B.  
 $\Delta = 0^{\circ} 22' \text{ Rt.}$   
 33' ± East of  
 intersection  
 R.R. spk.



8560

13

145+24.70  
 $\Delta = 1^{\circ} 11' \text{ Rt.}$   
 R.R. spk.



8559



PERSONNEL TITLE PERSONNEL TITLE

E. Krabill  
J. Kowalski  
Brooks

COUNTY Seneca

DATE

S. R. 227

WEATHER

SEC.

TEMP.

DESCRIPTION LEFT CENTER LINE RIGHT JOB NO.

177+00.6 (15) #599  
PI A-01°-31' LT

Near edge of sign post stk  
1' above ground

53.86'

RR spike  
FD P.K. WASHER @ SURFACE  
1' RT. & PAVE  
HOFFMAN 11/86  
12-3-63

shiner in Corn. Fence post

42.68'

44.08'

Near edge of 3" pipe "old Dutch Beer sign

55.16'

Near edge of sign post stk  
1' above ground.

1/4 (34)

193+90.2 (16) #600  
PI A-0°-48' RT

RR spike

shiner

108.94'

56.77'

34.42'

10.109'

x cut in top of curb

x cut in top of curb  
Approx. 13' from E. end.

shiner  
30" Maple

208+89.90 (17) #600  
P.O.T.

SEE NEW TIES  
HOFFMAN 11/86

P.K. nail

shiner 55.64'

102.23'

99.46'

S.E. Cor Sema 4  
base W.N.W.

1st Joint in Rail S. Inter. W. S.W.

12-3-63