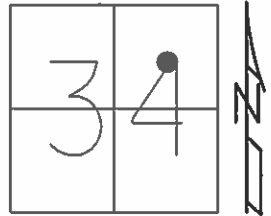


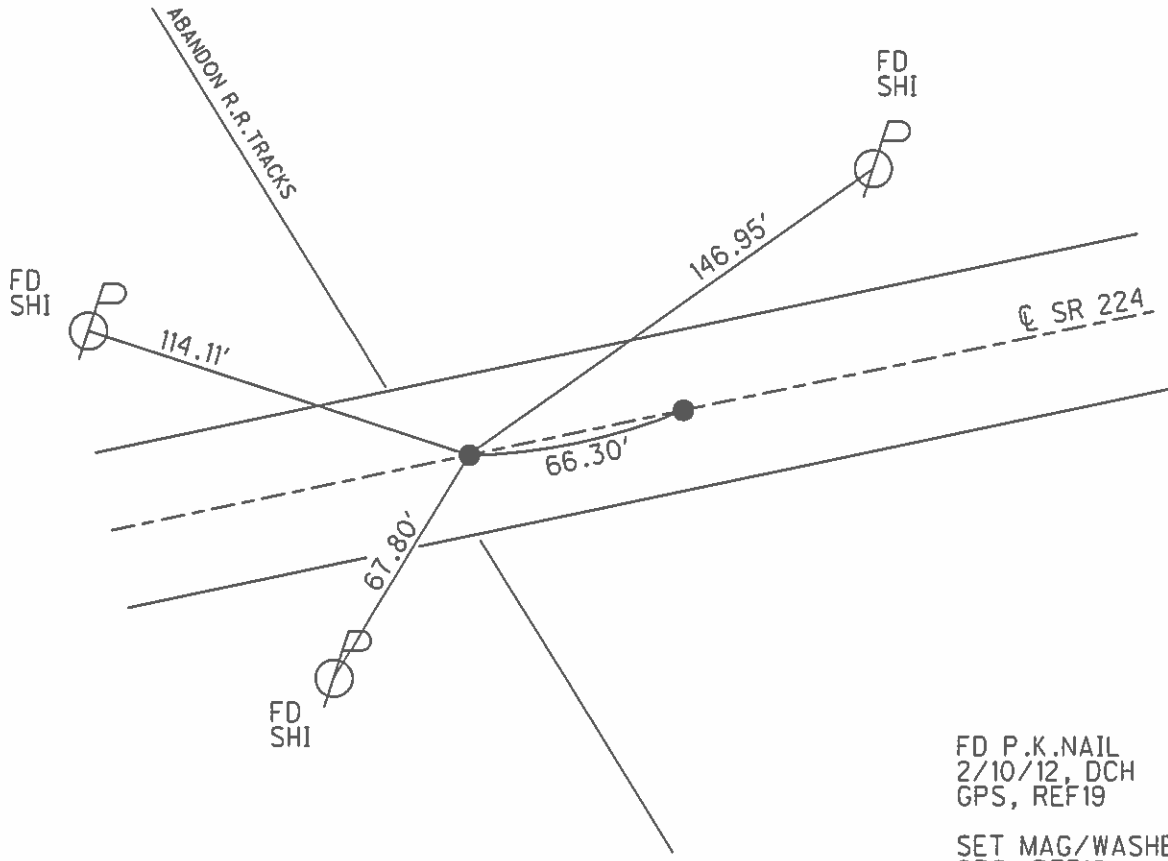
O.D.O.T. DISTRICT 2 SURVEY OFFICE (USE ONLY)

PERSONNEL _____ REFERENCE NO. 16 B SHEET 18 OF 39
 NOTES RHOADES DATE 6/11/13 ROUTE SR 224
 H.C. ROUSOS WEATHER CLOUDY COUNTY SENECA
 R.C. WESTFALL TEMP. 73° TOWNSHIP LOUDON
 _____ SECTION 34
 _____ T 2 N R 13 E

TYPE MONUMENT P.K. NAIL
 ON SURFACE - ~~BELOW~~ ON
 LEFT - ☉ PAV'T - RIGHT ON
11.8' TO LT EDGE PAVEMENT
 S.L.M. 208+18.41



Grid: Northing: 519801.506 Easting: 1735096.708



FD P.K. NAIL
 2/10/12, DCH
 GPS, REF 19
 SET MAG/WASHER
 GPS, REF 16
 7/23/14, EBW