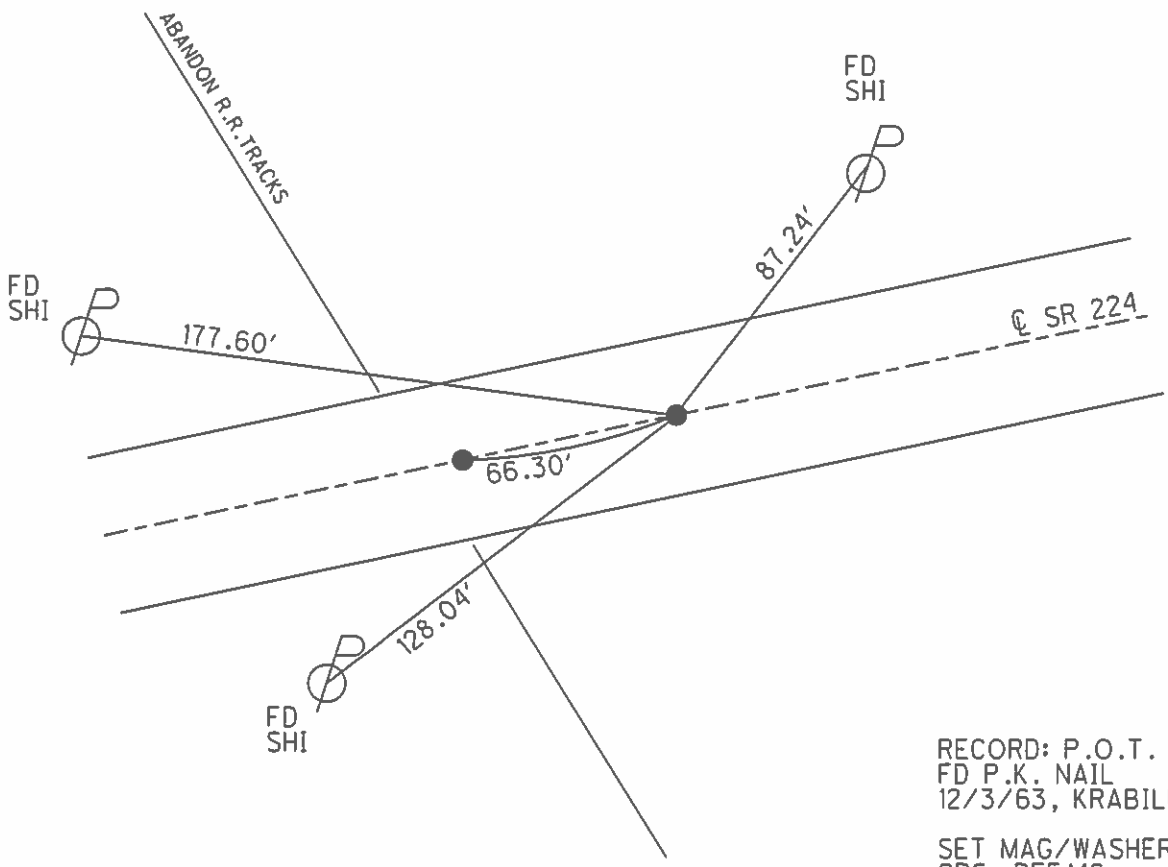
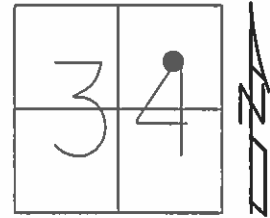


O.D.O.T. DISTRICT 2 SURVEY OFFICE (USE ONLY)

PERSONNEL _____ REFERENCE NO. 17 SHEET 19 OF 39
 NOTES RHOADES DATE 6/11/13 ROUTE SR 224
 H.C. ROUSOS WEATHER CLOUDY COUNTY SENECA
 R.C. WESTFALL TEMP. 73° TOWNSHIP LOUDON
 _____ SECTION 34
 _____ T 2 N R 13 E

TYPE MONUMENT P.K. SHANK
~~ON SURFACE~~ - BELOW 3"
 LEFT - ☉ PAV'T - RIGHT ON
11.8' TO LT EDGE PAVEMENT
 S.L.M. 208+84.71
 Grid: Northing: 519813.550 Easting: 1735161.919



RECORD: P.O.T.
 FD P.K. NAIL
 12/3/63, KRABILL
 SET MAG/WASHER
 GPS, REFA16
 7/23/14, EBW

O.D.O.T. DISTRICT 2 SURVEY OFFICE

PERSONNEL

REFERENCE NO. 17

SHEET 1 OF 1

NOTES HOFFMAN

H.C. g

DATE 11-10-86

ROUTE U.S. 224

R.C. CREW

WEATHER _____

COUNTY SENECA

TEMP. _____

TOWNSHIP LOUDON

SECTION 34

T2 N R 13 E

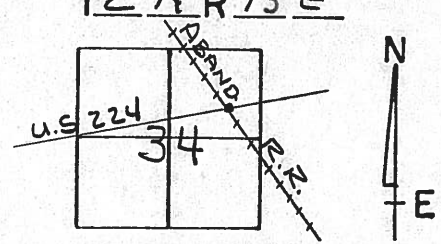
TYPE MONUMENT P.K. NAIL

~~ON SURFACE~~ - BELOW 3' DEEP

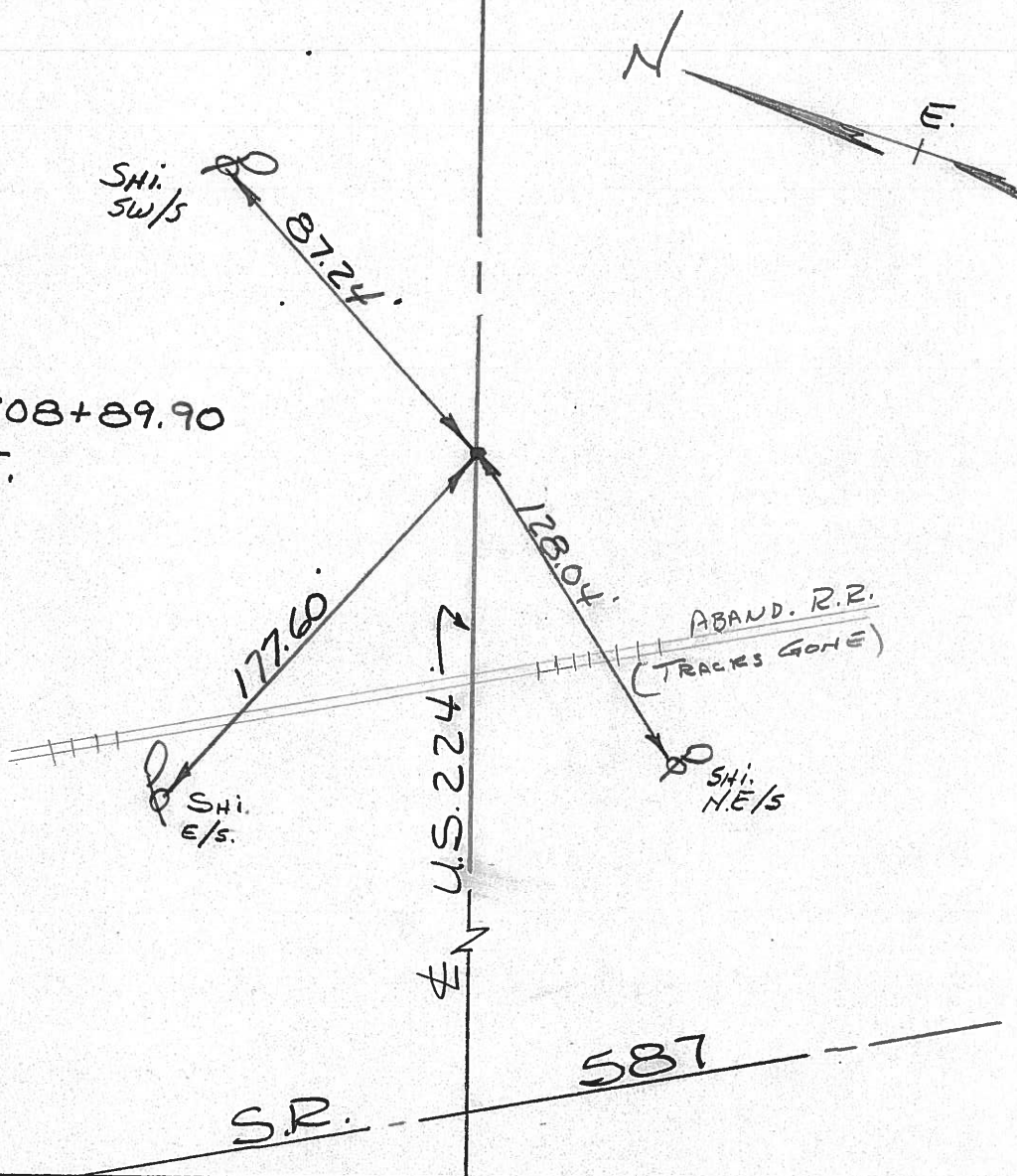
~~LEFT- & PAV'T. - RIGHT~~ ON E

1/8 TO LT. EDGE PAVEMENT

S.L.M. _____



OLD STA. 208+89.90
P.O.T.



PERSONNEL TITLE PERSONNEL TITLE

COUNTY Seneca DATE 7-22-71

S. R. 224 WEATHER cloudy

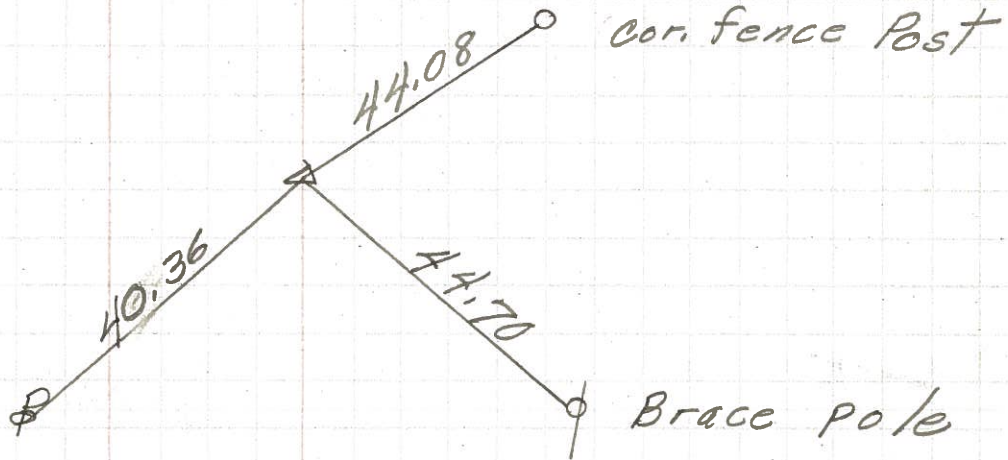
SEC. 0.00 TEMP. 40°

DESCRIPTION Hancock Co. Line to Tiffin JOB NO. _____

LEFT CENTER LINE RIGHT

P.C.
264+28.53
P.K. Nail

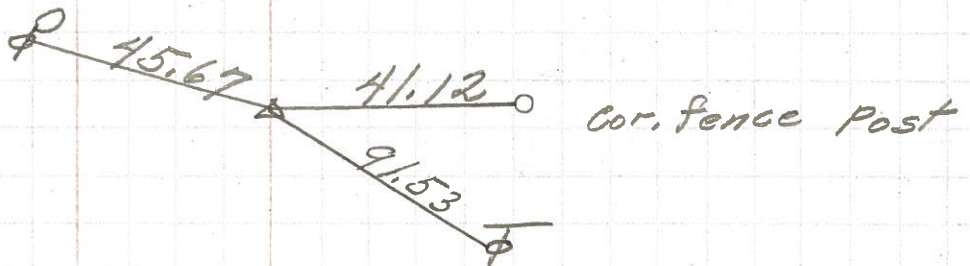
8566



19

230+64.28
 $\Delta = 0^\circ 21' \text{ Rt.}$
P.K. Nail

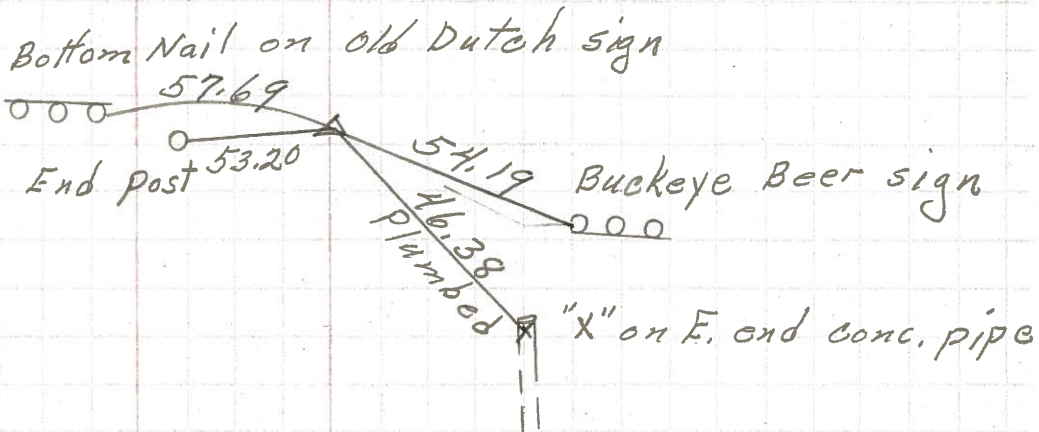
8565



18

217+08.65
 $\Delta = 0^\circ 18' \text{ Lt.}$
R.R. spk.

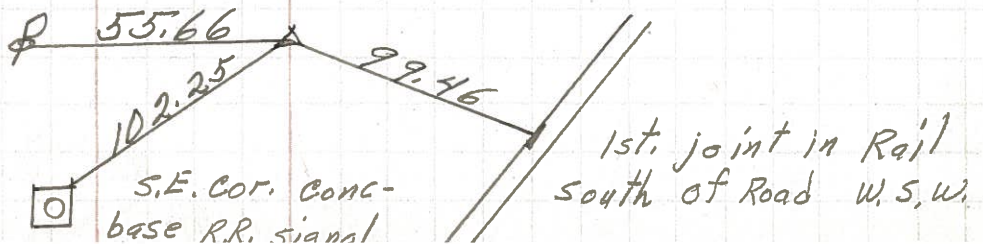
8564



17

P.I.
208+89.90
P.K. Nail on top

8563



PERSONNEL TITLE PERSONNEL TITLE

E. Krabill
J. Kowalski
Brooks

COUNTY Seneca

DATE

S. R. 224

WEATHER

SEC.

TEMP.

DESCRIPTION

LEFT

CENTER LINE

RIGHT

JOB NO.

177+00.6

15

399

Near edge of sign post stk
1' above ground

PI A-01°-31' Lt



RR spike

shiner in Cor. Fence post

FD P.K. WASHER @ SURFACE

42.68'

1' RT. & PAVE
HOFFMAN 11/86

Near edge of 3" pipe "old Dutch Beer sign

44.08'

1/4 34

12-3-63

Near edge of sign post stk
1' above ground.

193+90.2

16

600

PI A-0°-48' Rt

shiner

RR spike



9/16 34

56.77'

34.42'

12-3-63

x cut in top of curb

x cut in top of curb
approx. 15' from E. end.

shiner 30" Maple

208+87.90

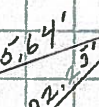
17

P.O.T.

SEE NEW LINES BY HOFFMAN 11/86

shiner 55.64'

P.K. nail



7/16 34

99.46'

SE. Cor Seneca
BASE W. N. W.

1st Joint in Rail S. Inter. W. S.W.

12-3-63