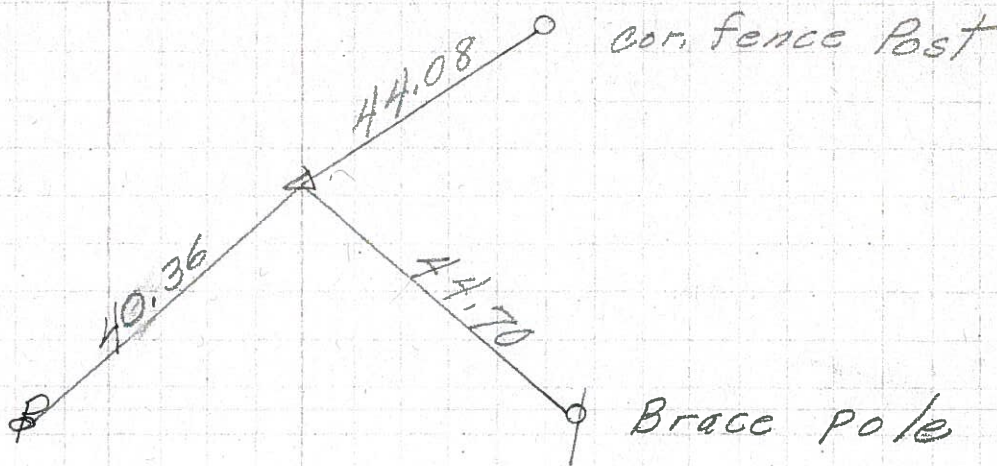


PERSONNEL	TITLE	PERSONNEL	TITLE

COUNTY Seneca DATE 7-22-71
 S. R. 224 WEATHER cloudy
 SEC. 0.00 TEMP. 40°
 DESCRIPTION Hancock Co. Line to Tiffin JOB NO. _____

P. C.
 264+28.53
 P. K. Nail

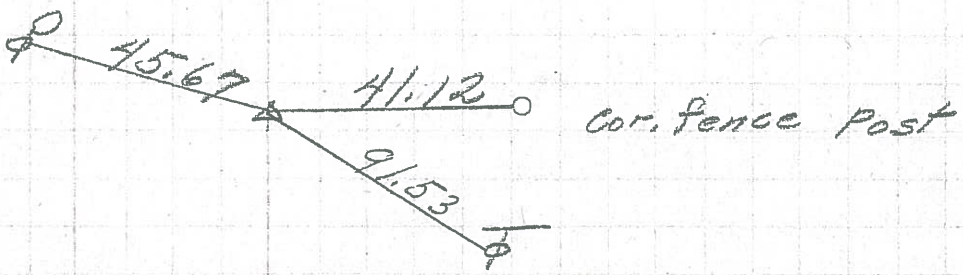
8566



19

230+64.28
 $\Delta = 0^\circ 21' \text{ RT.}$
 P. K. Nail

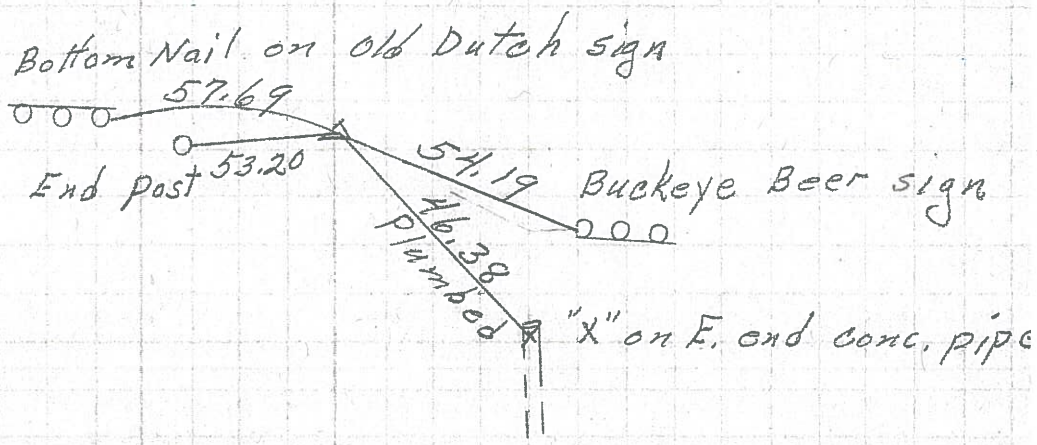
8565



18

217+08.65
 $\Delta = 0^\circ 18' \text{ Lt.}$
 R.R. SPK.

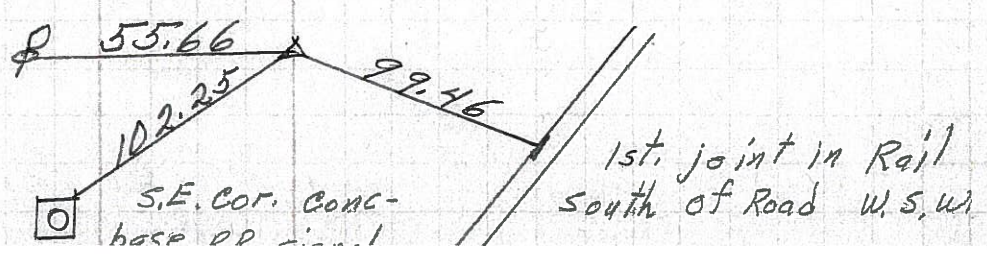
8564



17

P. I.
 208+89.90
 P. K. Nail on top

8563



PERSONNEL TITLE PERSONNEL TITLE

E. Krabill
J. Kowalski
Brooks

COUNTY SENECA

DATE

S. R. 224

WEATHER

SEC.

TEMP.

DESCRIPTION LEFT CENTER LINE RIGHT JOB NO.

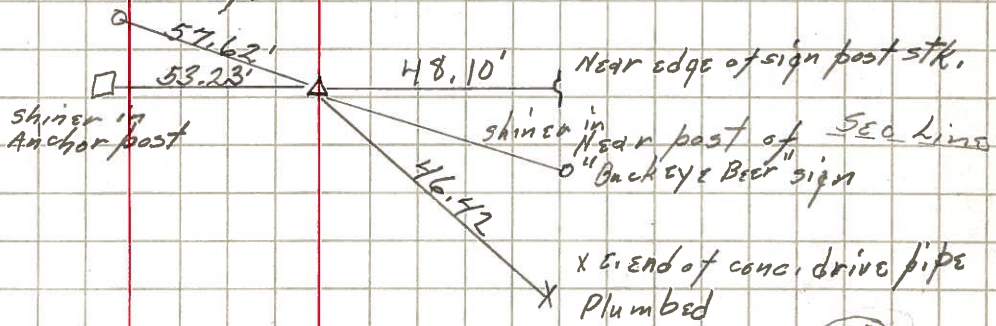
217+08.65 **(18)** # 601
P.I. Δ 0°-18' Lt

RR spike

12-3-63

Near edge of 3' post
"old Dutch Beer" sign

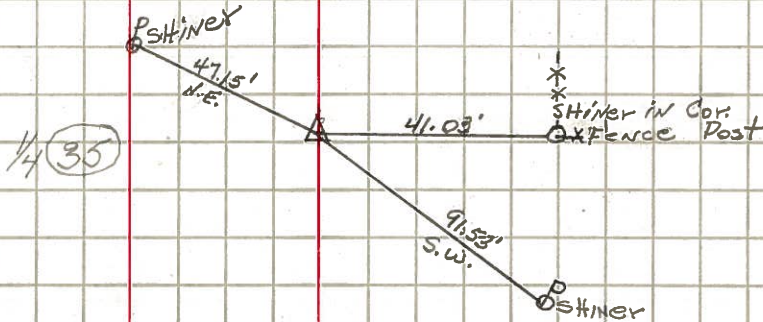
(34)



(19) # 602
230+64.28
P.I. Δ 0°-21' Rt.

P. Nail

12-3-63

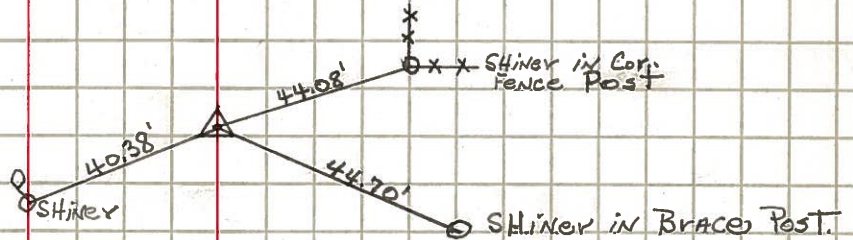


(35)

P.C. 264+28.53

~~P. Nail~~

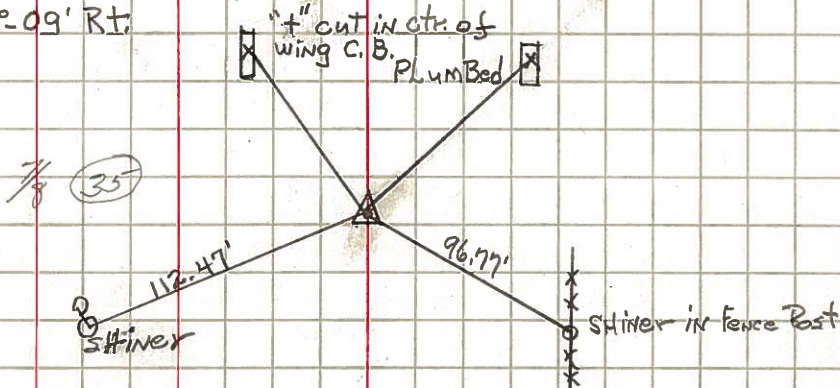
12-3-63



605
P.I. 265+30.06 Δ 0°-09' Rt.

P. Nail

12-3-63



(35)

(21)