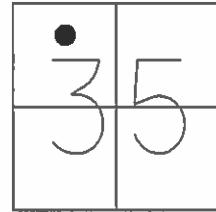


O.D.O.T. DISTRICT 2 SURVEY OFFICE (USE ONLY)

PERSONNEL _____ REFERENCE NO. 19 SHEET 21 OF 39
NOTES WESTFALL DATE 6/12/13 ROUTE SR 224
H.C. ROUSOS WEATHER FAIR COUNTY SENECA
R.C. HOMAN TEMP. 73° TOWNSHIP LOUDON
SECTION 35
T 2 N R 13 E

TYPE MONUMENT P.K./WASHER
~~ON SURFACE~~ - BELOW 4"
LEFT - ☉ PAV'T - RIGHT ON
- TO - EDGE PAVEMENT
S.L.M. 230+64.28

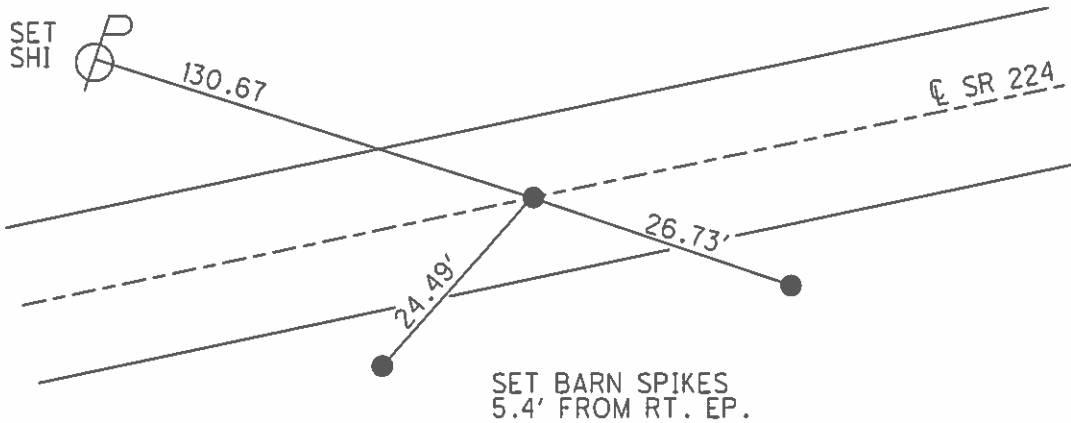


Grid: Northing: 520229.506 Easting: 1737295.209

RECORD: P.I.
 $\Delta = 0^\circ 21' RT$
FD P.K. NAIL
12/3/63, KRABILL

FD P.K. NAIL
4" DOWN
2/10/12, DCH
GPS, REF21

SET MAG/WASHER
GPS, REF21
7/23/14, EBW

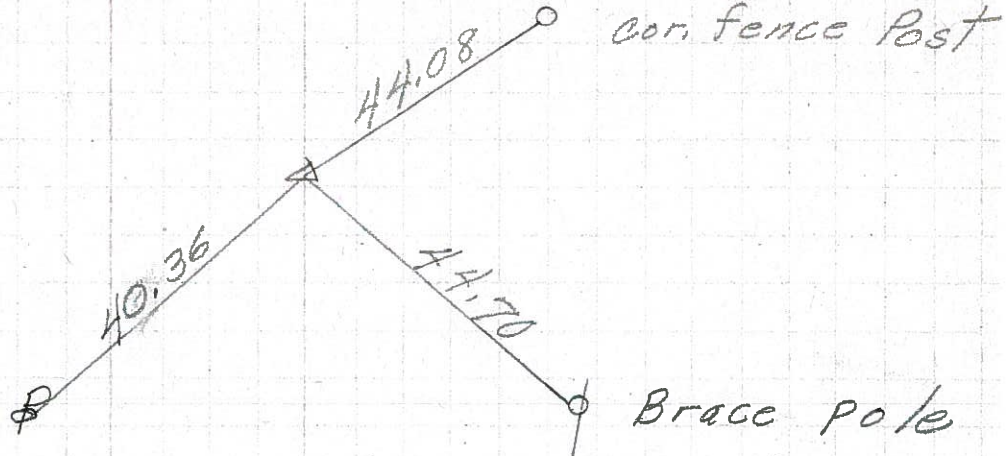


PERSONNEL	TITLE	PERSONNEL	TITLE
DESCRIPTION Hancock Co. Line to Tiffin			

COUNTY Seneca DATE 7-22-71
 S. R. 224 WEATHER cloudy
 SEC. 0.00 TEMP. 40°
 LEFT CENTER LINE RIGHT JOB NO.

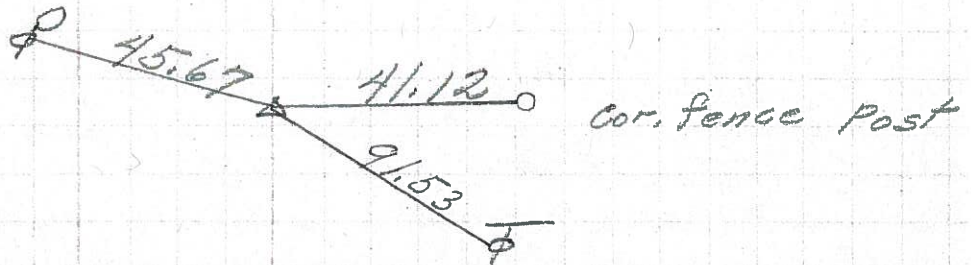
P. C.
 264+28.53
 P. K. Nail

8566



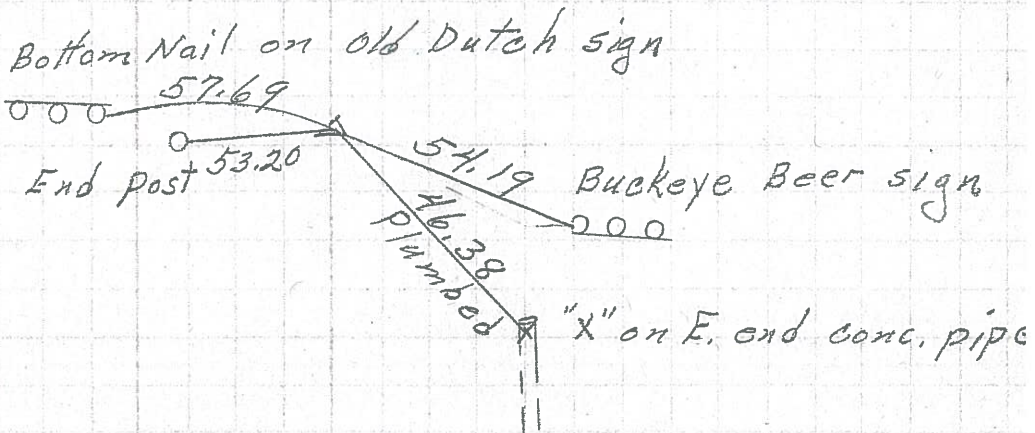
19 230+64.28
 $\Delta = 0^\circ 21' \text{ Rt.}$
 P. K. Nail

8565



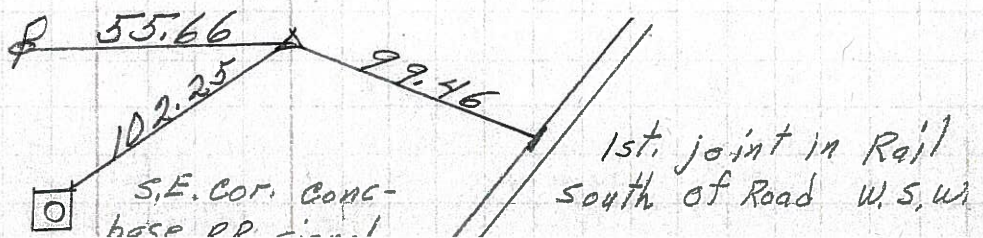
18 217+08.65
 $\Delta = 0^\circ 18' \text{ Lt.}$
 R.R. SPK.

8564



17 P. I.
 208+89.90
 P. K. Nail on top

8563



PERSONNEL	TITLE	PERSONNEL	TITLE	COUNTY	DATE
E. Krabill				SENECA	
J. Kowalski				S. R. 224	WEATHER
Brooks				SEC.	TEMP.

DESCRIPTION	LEFT	CENTER LINE	RIGHT	JOB NO.
-------------	------	-------------	-------	---------

