

O.D.O.T. DISTRICT 2 SURVEY OFFICE (USE ONLY)

PERSONNEL _____ REFERENCE NO. 21 SHEET 22 OF 39

NOTES LEU DATE 7/9/14 ROUTE SR 224
H.C. HOMAN WEATHER SUNNY COUNTY SENECA
R.C. MEYER TEMP. 68° TOWNSHIP LOUDON
THOMAS SECTION 35
T 2 N R 13 E

TYPE MONUMENT P.K./WASHER

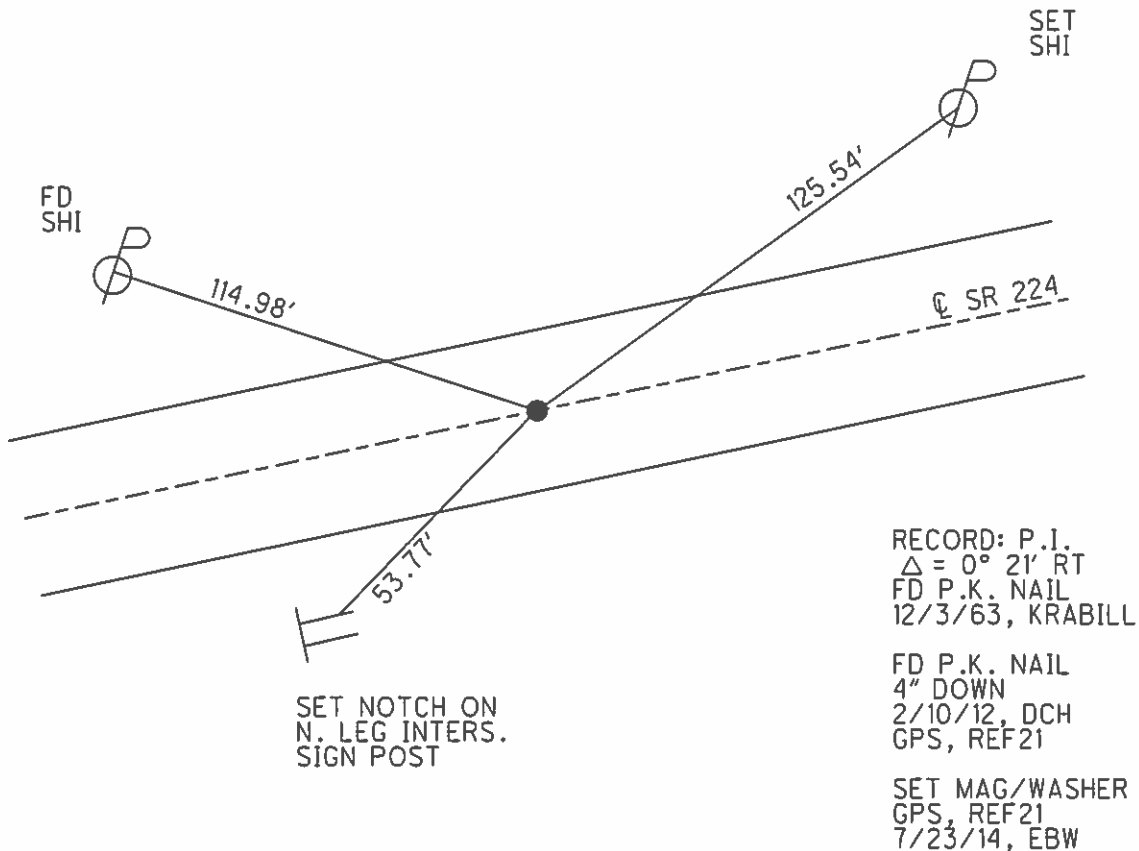
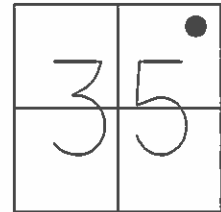
~~ON SURFACE~~ - BELOW 3"

LEFT - ☉ PAV'T - ~~RIGHT~~ 0.5'

- TO - EDGE PAVEMENT

S.L.M. 265+30.06

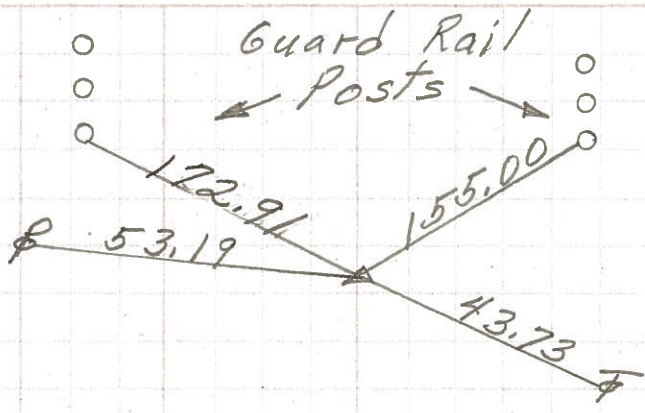
Grid: Northing: 520879.458 Easting: 1740699.763



PERSONNEL	TITLE	PERSONNEL	TITLE

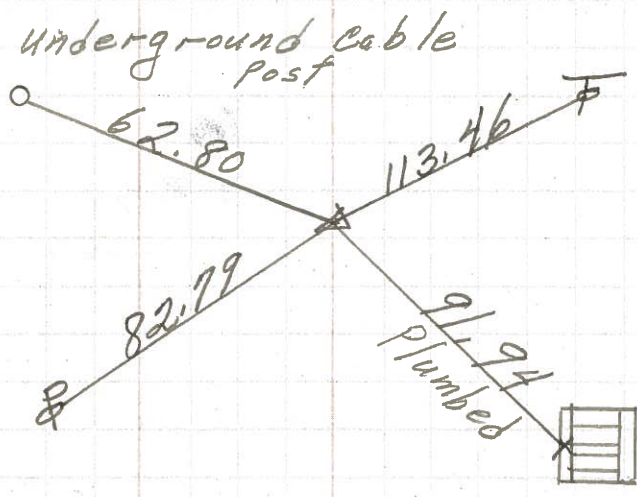
COUNTY Seneca DATE 3-22-71
 S. R. 224 WEATHER cloudy
 SEC. 0.00 TEMP. 40°
 DESCRIPTION Hancock Co. Line to Tiffin JOB NO. _____

LEFT CENTER LINE RIGHT



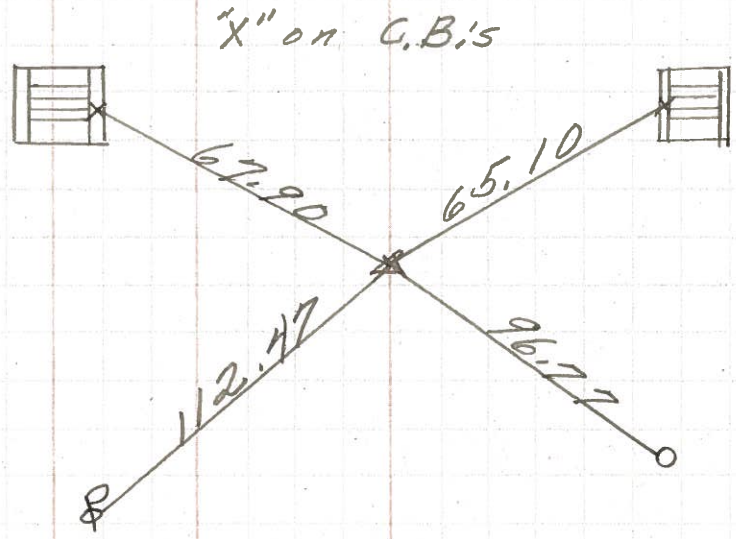
(23) 289+87.50
 $\Delta = 0^\circ 04' Lt.$
 P. K. Nail
 1" down

8569



(22) P.I.
 282+95.4
 $\Delta = 0^\circ 10' Rt.$
 P. K. Nail

8568



(21) 265+30.06
 $\Delta = 0^\circ 09' Rt.$
 P. K. Nail

8567

PERSONNEL TITLE PERSONNEL TITLE

COUNTY Seneca

DATE

E. Krabill
J. Kawaleski
Brooks

S. R. 224

WEATHER

SEC.

TEMP.

DESCRIPTION

LEFT

CENTER LINE

RIGHT

JOB NO.

21740865 **(18)** # 601
P.I. Δ 0°-18' Lt

Near edge of 3' post
"old Dutch Beer" sign

(34)

P.R. spike

shiner in
Anchor post

48.10'

Near edge of sign post str.

shiner in
Near post of 500 Lins
"Buckeye Beer" sign

12-3-63

X End of conc. drive pipe
Plumbed

(35)

230464.28 **(19)** # 602
P.I. Δ 0°-21' Rt.

P. Knail

P shiner
47.15'
N.E.

41.03'

X
shiner in Cor.
Fence Post

(35)

12-3-63

91.53'
S.W.

P shiner

P.C. 264+28.53

P. Knail **(20)**

40.38'
P shiner

44.08'

X X
shiner in Cor.
Fence Post

12-3-63

44.70'

shiner in Brace Post.

P.I. 265+30.06' Δ 0°-09' Rt.

"+" out in ctr. of
wing C.B. Plumbed

P. Knail **(21)**

(35)

12-3-63

112.47'
P shiner

96.77'

shiner in fence Post