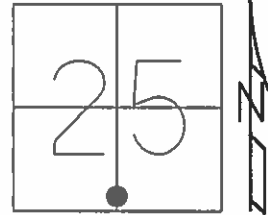


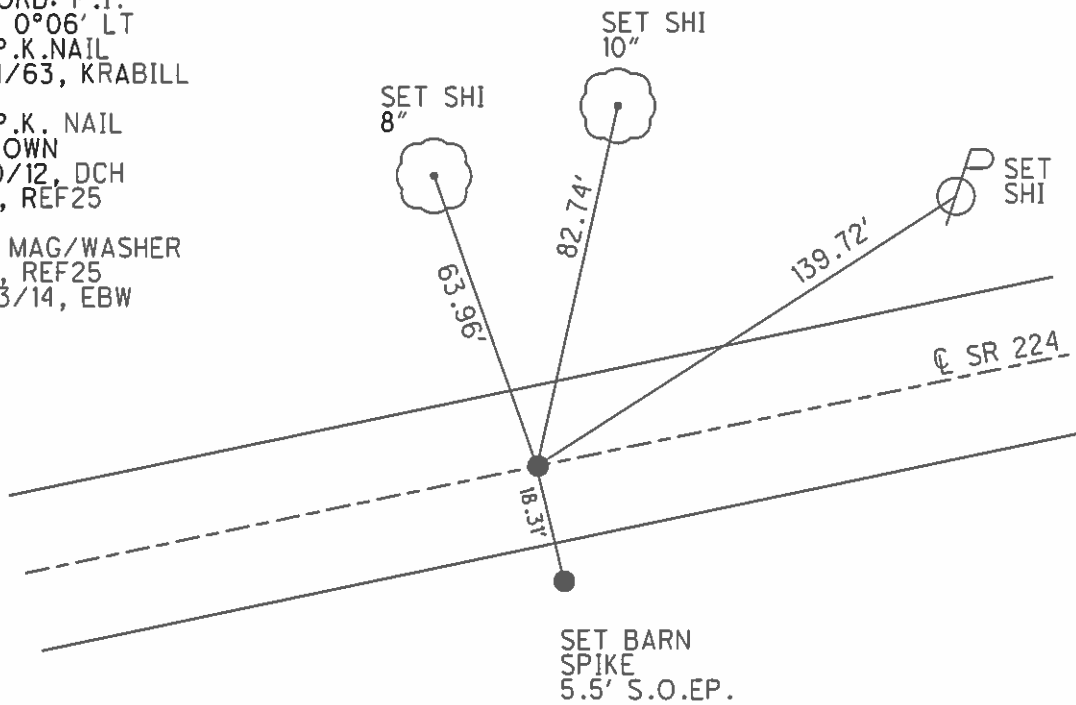
O.D.O.T. DISTRICT 2 SURVEY OFFICE (USE ONLY)

PERSONNEL _____ REFERENCE NO. 24 SHEET 25 OF 39
 NOTES WESTFALL DATE 6/12/13 ROUTE SR 224
 H.C. ROUSOS WEATHER FAIR COUNTY SENECA
 R.C. HOMAN TEMP. 73° TOWNSHIP LOUDON
 _____ SECTION 25
 _____ T 2 N R 13 E

TYPE MONUMENT P.K. SHANK
~~ON SURFACE~~ - BELOW 4"
 LEFT - ☉ PAV'T - RIGHT ON
- TO - EDGE PAVEMENT
 S.L.M. 297+73
 Grid: Northing: 521465.437 Easting: 1743831.916



RECORD: P.I.
 $\Delta = 0^{\circ}06'$ LT
 FD P.K.NAIL
 12/4/63, KRABILL
 FD P.K. NAIL
 3" DOWN
 2/10/12, DCH
 GPS, REF25
 SET MAG/WASHER
 GPS, REF25
 7/23/14, EBW



PERSONNEL TITLE PERSONNEL TITLE

COUNTY Seneca DATE 3-25-71

S. R. 224 WEATHER Fair

SEC. 0.00 TEMP. 40°

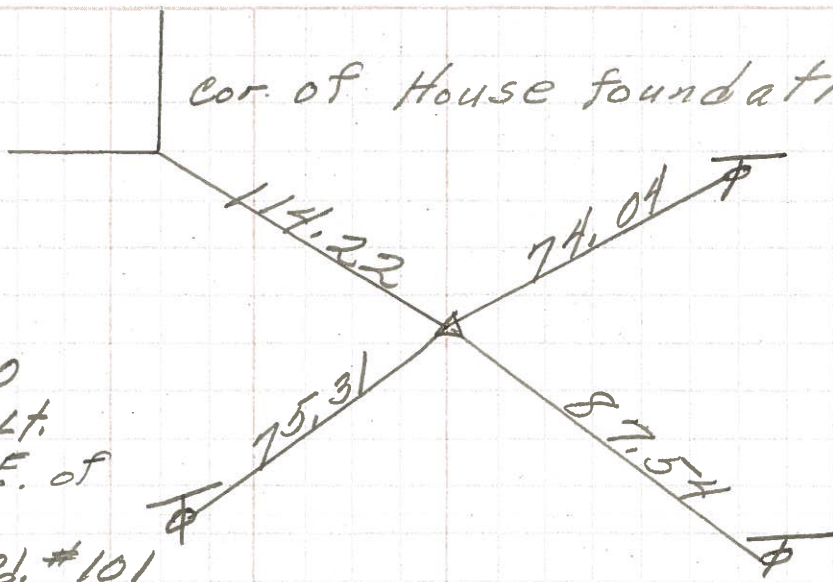
DESCRIPTION Hancock Co. Line to Tiffin

LEFT CENTER LINE RIGHT

cor. of House foundation

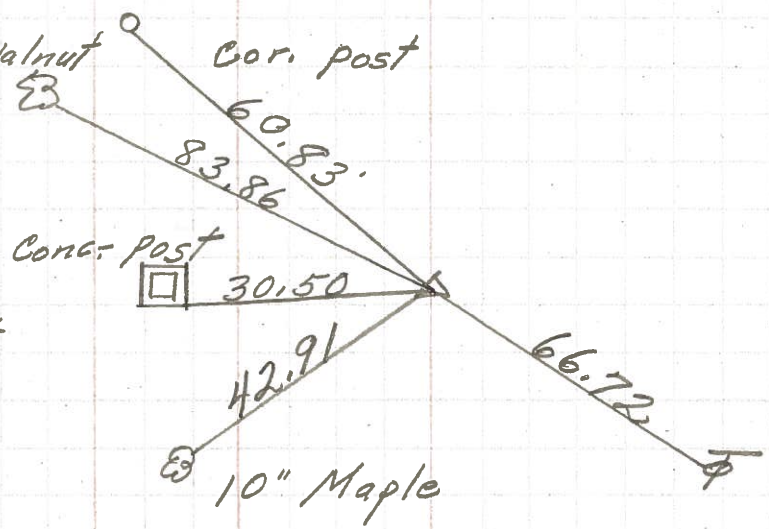
26

P. I.
326 + 77.90
 $\Delta = 0^{\circ} 08' Lt.$
Approx. 20' E. of
interscction
Twp. Line Rd. #101
8572



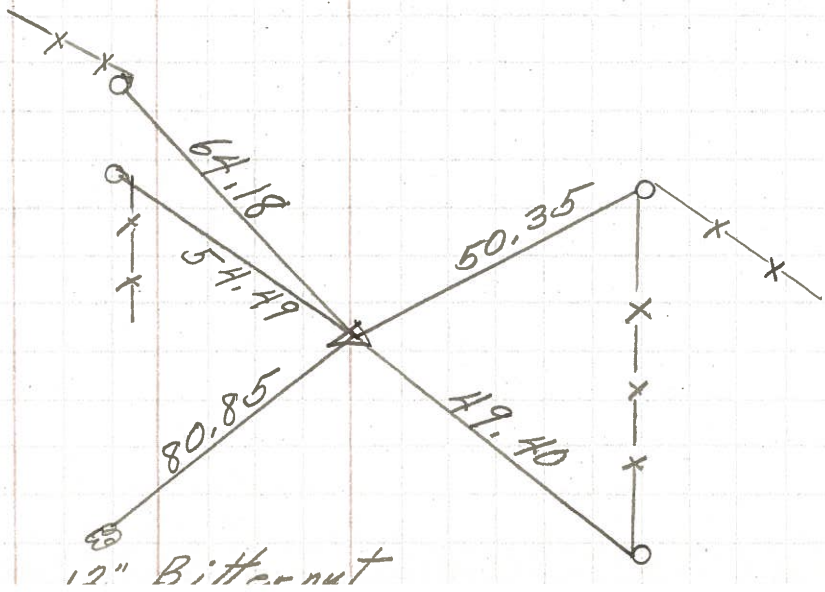
25

P. I.
316 + 64.90
 $\Delta = 0^{\circ} 35' Rt.$
P. K. Nail
8571



24

P. I.
297 + 73.40
 $\Delta = 0^{\circ} 06' Lt.$
P. K. Nail
8570



PERSONNEL TITLE PERSONNEL TITLE

COUNTY Seneca

DATE

E. Krabill

T. Kowalski

D. Brooks

S. R. 224

WEATHER

SEC.

TEMP.

DESCRIPTION

LEFT

CENTER LINE

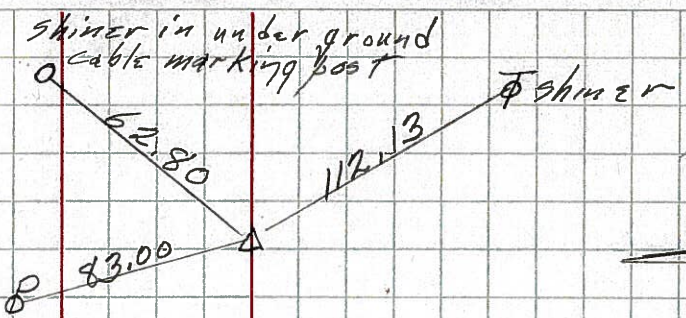
RIGHT

JOB NO.

282+95.4 ⁽²²⁾ #607
P.I. Δ 0°-10' RT

P.K. nail

1/4 (25)

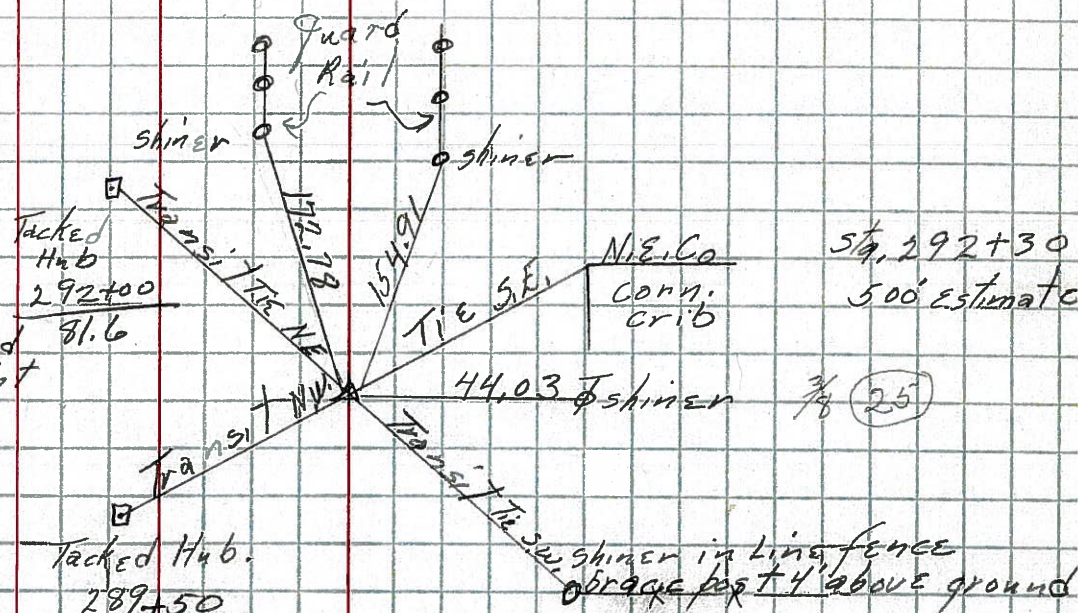


1/4 (36)

123-63

289+87.5 ⁽²³⁾ #608
P.I. Δ 0°-04' LT

Ties not too good
did not set point

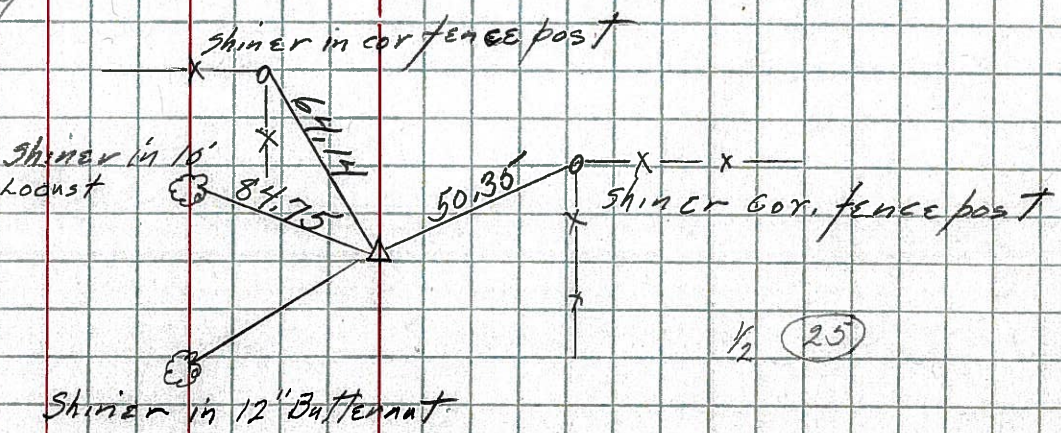


Sta. 292+30
500' estimate

12-4-63

297+73.4 ⁽²⁴⁾ #609
P.I. Δ 0°-06' LT

P.K. nail



1/2 (25)

12-4-63