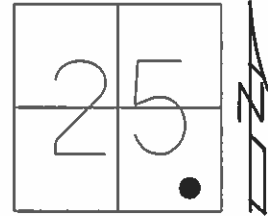


O.D.O.T. DISTRICT 2 SURVEY OFFICE (USE ONLY)

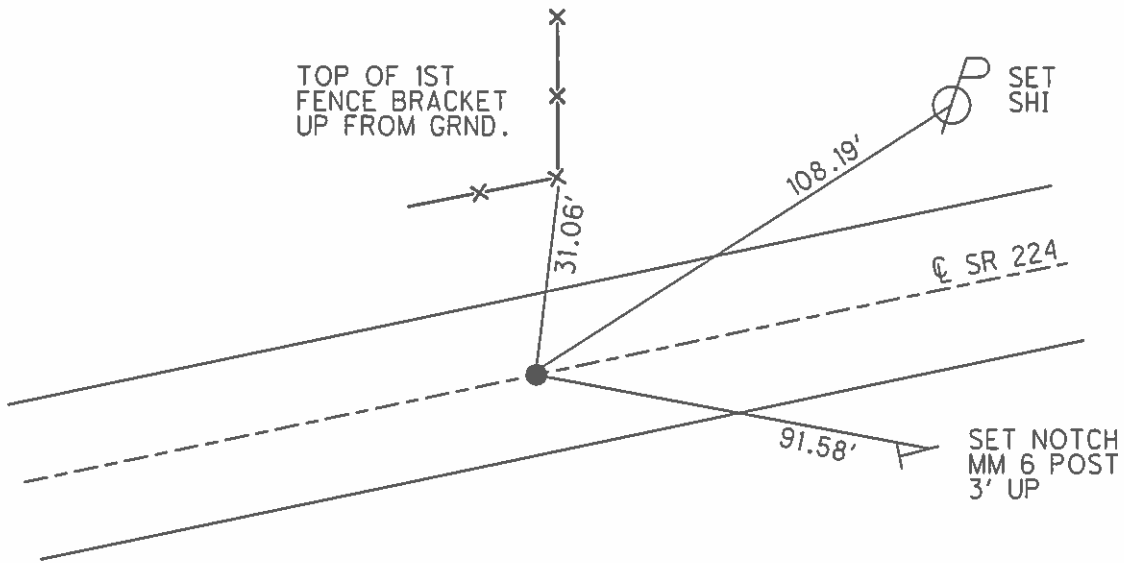
PERSONNEL \_\_\_\_\_ REFERENCE NO. 25 SHEET 26 OF 39  
 NOTES WESTFALL DATE 6/12/13 ROUTE SR 224  
 H.C. ROUSOS WEATHER FAIR COUNTY SENECA  
 R.C. HOMAN TEMP. 73° TOWNSHIP LOUDON  
 \_\_\_\_\_ SECTION 25  
 \_\_\_\_\_ T 2 N R 13 E

TYPE MONUMENT P.K.NAIL  
~~ON SURFACE~~ - BELOW 4"  
 LEFT - ☉ PAV'T - RIGHT ON  
- TO - EDGE PAVEMENT  
 S.L.M. 316+65



Grid: Northing: 521814.292 Easting: 1745690.894

RES.#7185



RECORD: P.I.  
 $\Delta = 0^\circ 35' RT$   
 FD P.K.NAIL  
 12/4/63, KRABILL

FD P.K. NAIL  
 4" DOWN  
 2/10/12, DCH  
 GPS, REF26

SET MAG/WASHER  
 7/9/14, DCH  
 GPS, REFA25  
 7/23/14, EBW

PERSONNEL TITLE PERSONNEL TITLE

COUNTY Seneca DATE 3-25-71

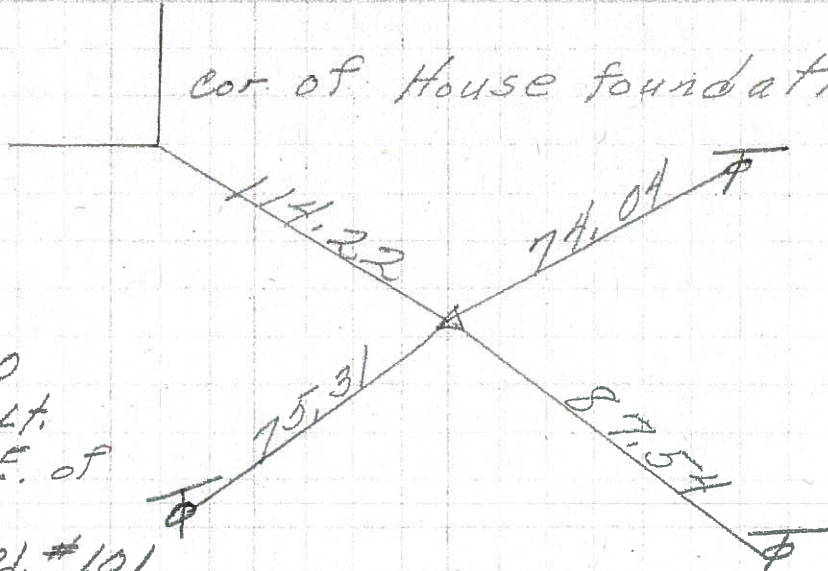
S. R. 224 WEATHER Fair

SEC. 0.00 TEMP. 40°

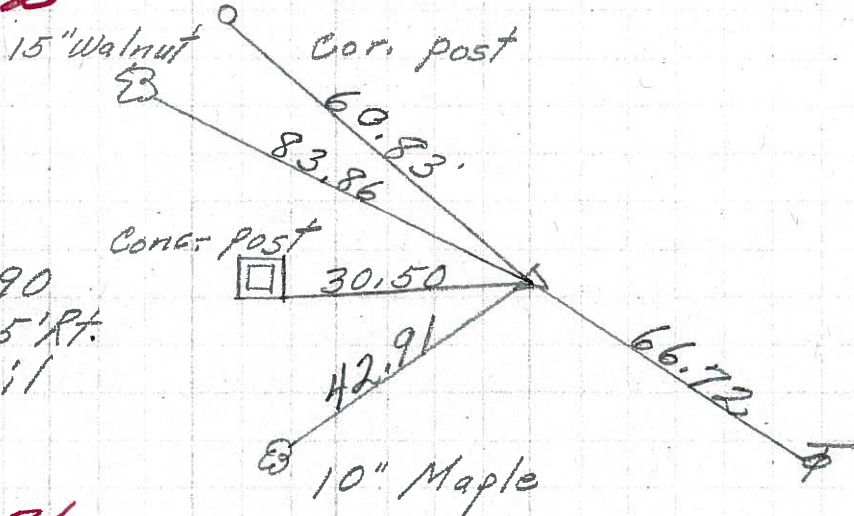
DESCRIPTION Hancock Co. Line to Tiffin JOB NO. \_\_\_\_\_

LEFT CENTER LINE RIGHT

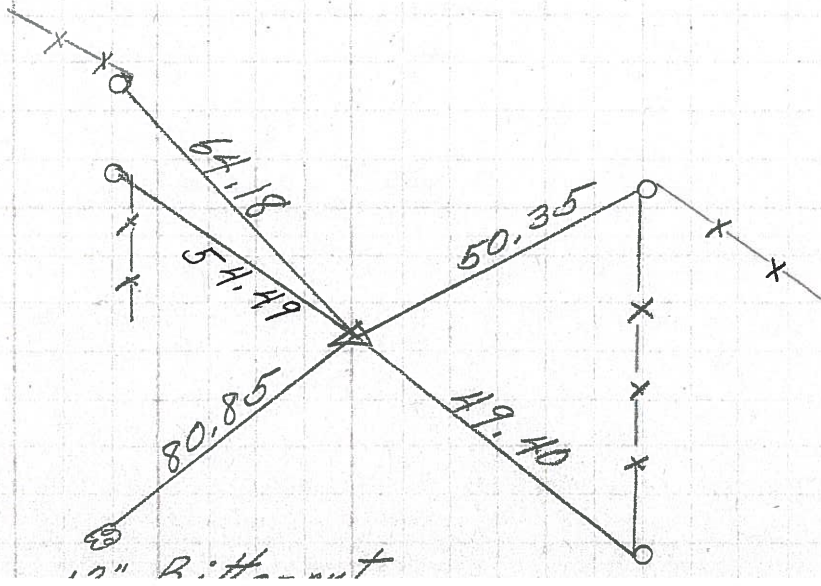
cor. of House foundation



**26**  
 P. I.  
 326 + 77.90  
 $\Delta = 0^{\circ} 08' Lt.$   
 Approx. 20' E. of  
 intersection  
 Twp. Line Rd. #101  
 8572



**25**  
 P. I.  
 316 + 64.90  
 $\Delta = 0^{\circ} 35' Rt.$   
 P. K. Nail  
 8571



**24**  
 P. I.  
 297 + 73.40  
 $\Delta = 0^{\circ} 06' Lt.$   
 P. K. Nail  
 8570



PERSONNEL TITLE PERSONNEL TITLE

E. Krabill  
J. Kowaleski  
D. Brooks

COUNTY GENESEA

DATE

S. R. 224

WEATHER

SEC.

TEMP.

DESCRIPTION

LEFT

CENTER LINE

RIGHT

JOB NO.

