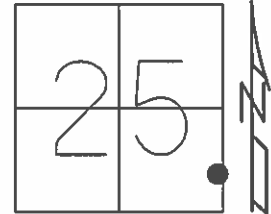


O.D.O.T. DISTRICT 2 SURVEY OFFICE (USE ONLY)

PERSONNEL _____ REFERENCE NO. 25 A SHEET 27 OF 39
 NOTES WESTFALL DATE 6/12/13 ROUTE SR 224
 H.C. ROUSOS WEATHER FAIR COUNTY SENECA
 R.C. HOMAN TEMP. 73° TOWNSHIP LOUDON
 _____ SECTION 25
 _____ T 2 N R 13 E

TYPE MONUMENT MASONRY NAIL
~~ON SURFACE~~ - BELOW 2"
 LEFT - ☉ PAV'T - RIGHT ON
- TO - EDGE PAVEMENT
 S.L.M. 326+59

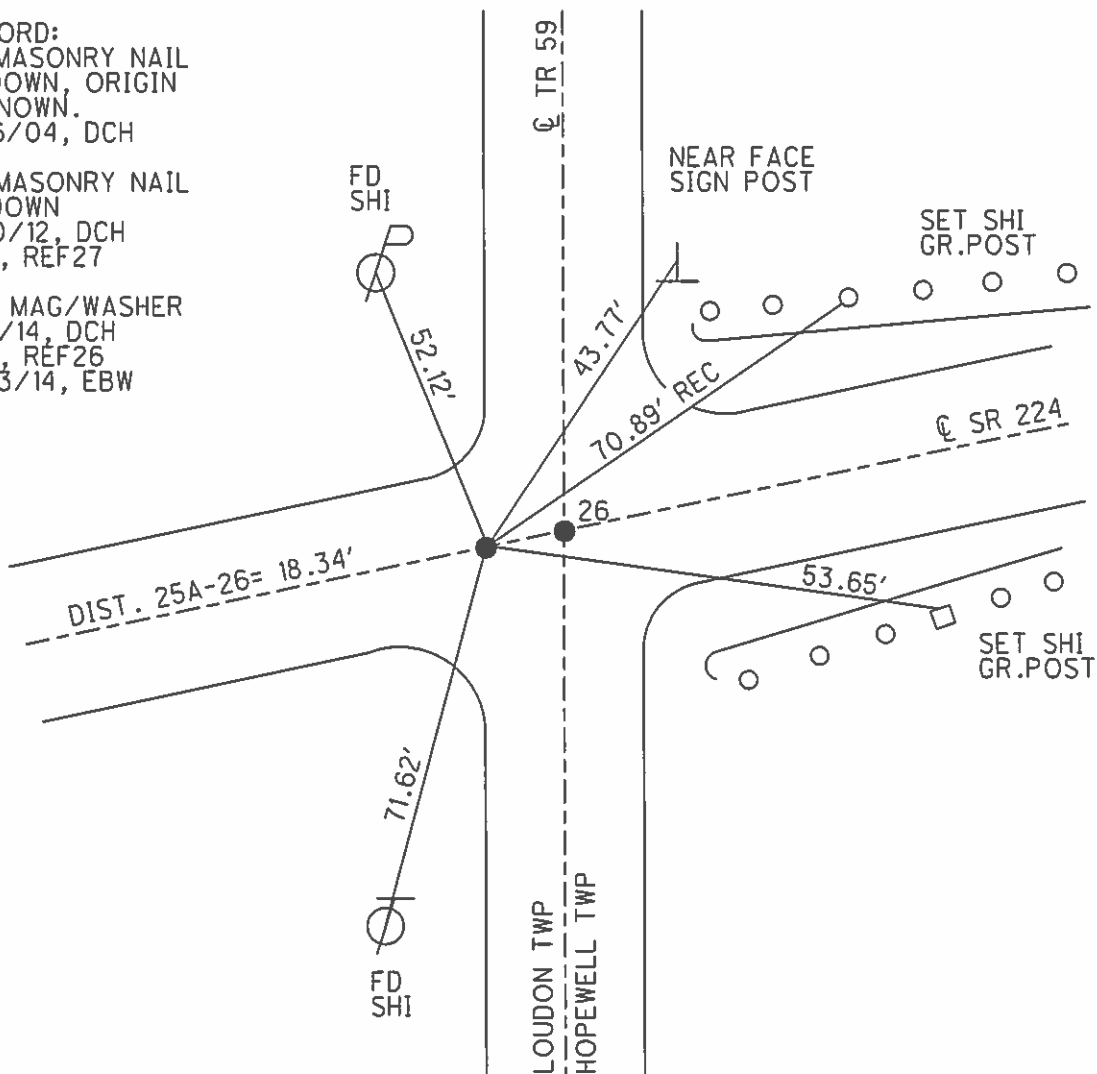


Grid: Northing: 521987.805 Easting: 1746670.350

RECORD:
 FD MASONRY NAIL
 2" DOWN, ORIGIN
 UNKNOWN.
 4/16/04, DCH

FD MASONRY NAIL
 3" DOWN
 2/10/12, DCH
 GPS, REF27

SET MAG/WASHER
 7/9/14, DCH
 GPS, REF26
 7/23/14, EBW



O.D.O.T. DISTRICT 2 SURVEY OFFICE

PERSONNEL

REFERENCE NO. 26

SHEET 1 OF 26

NOTES NUHFER

DATE 04-16-04

ROUTE US 224

H.C. HOOKE

WEATHER NICE

COUNTY SENECA

R.C. HOMAN

TEMP. 55°

TOWNSHIP HOPEWELL

SECTION 30

A = Rd masonry nail, 2" down. (original unknown) T 2 N R 14 E
 B = PK & WASHER

TYPE MONUMENT PK & WASHER

~~ON SURFACE~~ - BELOW 2"

LEFT - Q PAV'T - RIGHT

 TO EDGE PAVEMENT

S.L.M. A=326+98, B=326+77.90
+59

LOU DON TWP	HOPE WELL TWP
25	30



Record:

PT
 326+77.90
 Delta = 0°08' LT
 20' EAST OF
 INTERSECTION
 T.R. 101

25-A

DISTANCE A-B=18.37'

