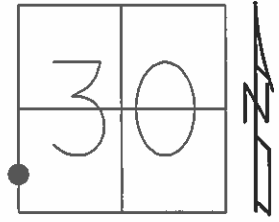


O.D.O.T. DISTRICT 2 SURVEY OFFICE (USE ONLY)

PERSONNEL	REFERENCE NO.	26	SHEET	28	OF	39
NOTES	WESTFALL	DATE	6/12/13	ROUTE	SR 224	
H.C.	ROUSOS	WEATHER	FAIR	COUNTY	SENECA	
R.C.	HOMAN	TEMP.	73°	TOWNSHIP	HOPEWELL	
				SECTION	30	
				T	2	N
				R	14	E

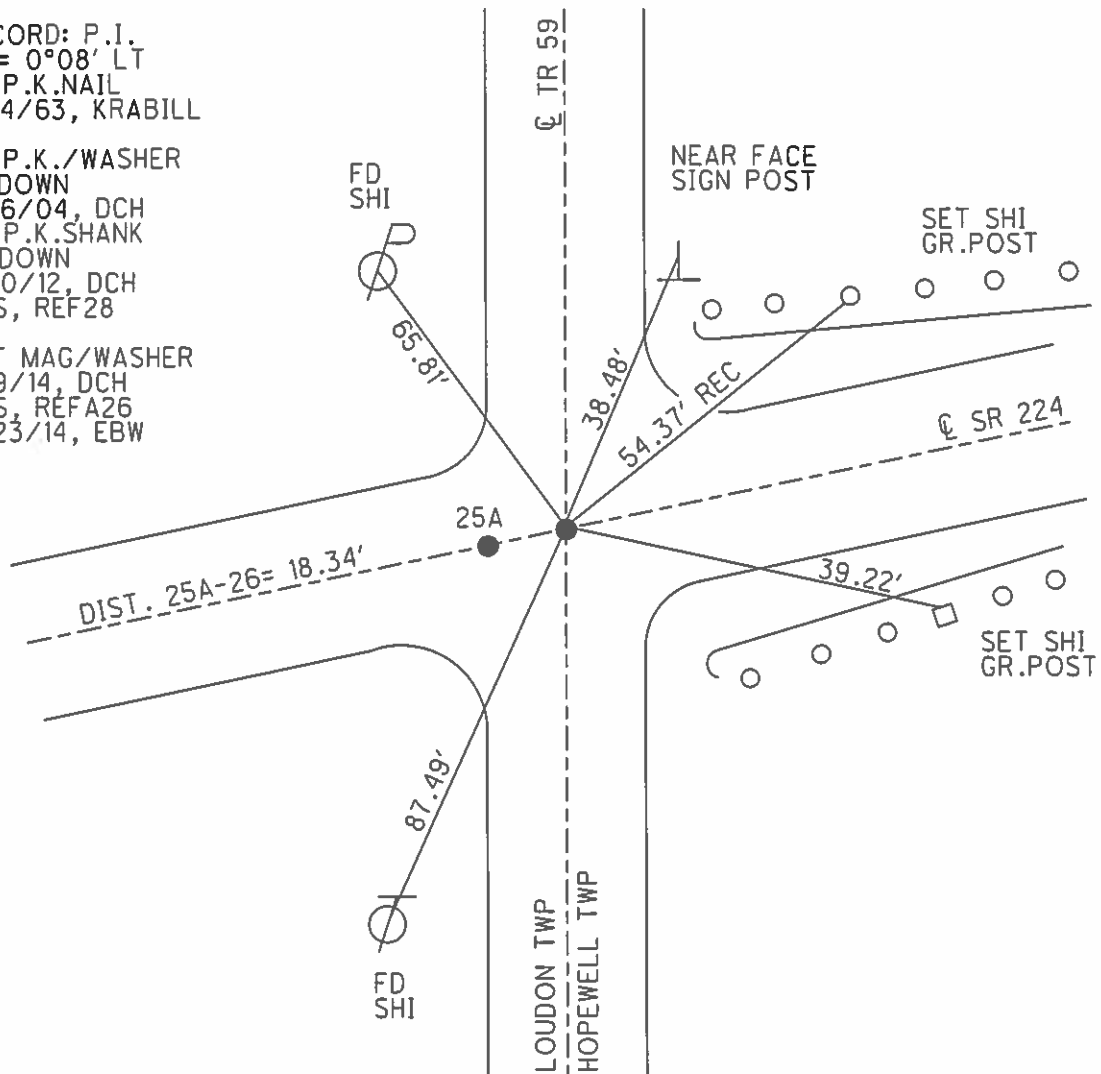
TYPE MONUMENT P.K.SHANK
~~ON SURFACE~~ - BELOW 2"
 LEFT - ☉ PAV'T - RIGHT -
- TO - EDGE PAVEMENT
 S.L.M. 326+77.90
 Grid: Northing: 521990.807 Easting: 1746688.436



RECORD: P.I.
 $\Delta = 0^{\circ}08' LT$
 FD P.K.NAIL
 12/4/63, KRABILL

FD P.K./WASHER
 2" DOWN
 4/16/04, DCH
 FD P.K.SHANK
 3" DOWN
 2/10/12, DCH
 GPS, REF28

SET MAG/WASHER
 7/9/14, DCH
 GPS, REFA26
 7/23/14, EBW



O.D.O.T. DISTRICT 2 SURVEY OFFICE

PERSONNEL

REFERENCE NO. 26

SHEET 1 OF 26

NOTES NUHFER

DATE 04-16-04

ROUTE US 224

H.C. HOOKER

WEATHER NICE

COUNTY SENECA

R.C. HOMAN

TEMP. 55°

TOWNSHIP HOPEWELL

SECTION 30

TYPE MONUMENT A = 2" masonry nail, 2" down (original unknown)
B = PK & WASHER

T 2 N R 14 E

~~ON SURFACE~~ - BELOW 2"

LEFT - Q PAV'T - RIGHT

 TO EDGE PAVEMENT

S.L.M. A=326+98, B=326+77.90
+59

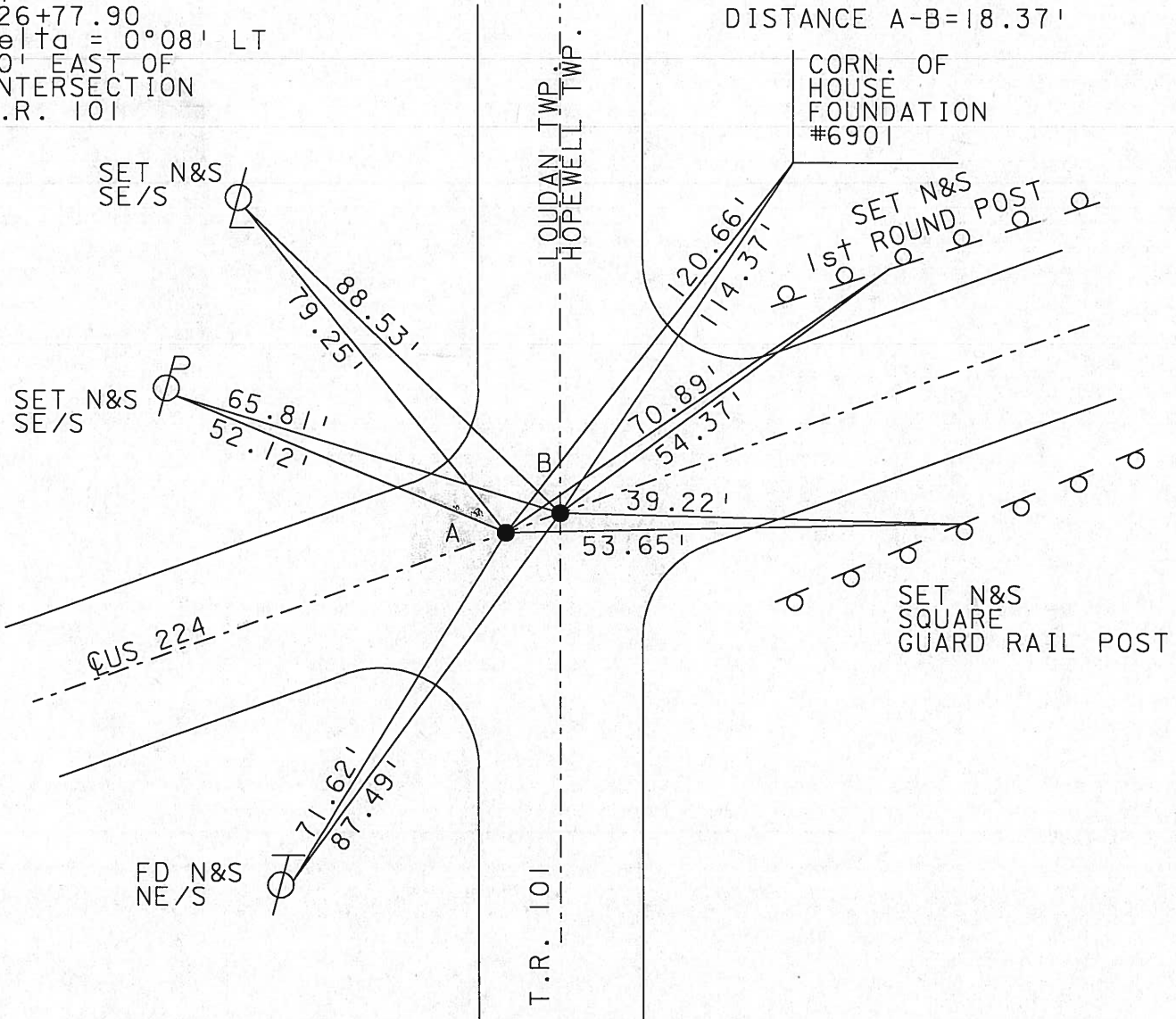
LOU DON TWP	HOPE WELL TWP
25	30



Records:

PT
 326+77.90
 Delta = 0°08' LT
 20' EAST OF
 INTERSECTION
 T.R. 101

DISTANCE A-B=18.37'



Resurveyed 2004

O.D.O.T. DISTRICT 2 SURVEY OFFICE

PERSONNEL

REFERENCE NO. 26

SHEET OF

NOTES CRONIN

H.C. BARBOUR

R.C. RIPPLE

GEYMAN

DATE 6-23-88

WEATHER NICE

TEMP. 78°F

ROUTE US224

COUNTY SENECA

TOWNSHIP HOPEWELL

SECTION 30

T2 NR 14 E

TYPE MONUMENT SET PK & WASHER

ON SURFACE - ~~BELOW~~ SURFACE

LEFT - & PAV'T. - RIGHT

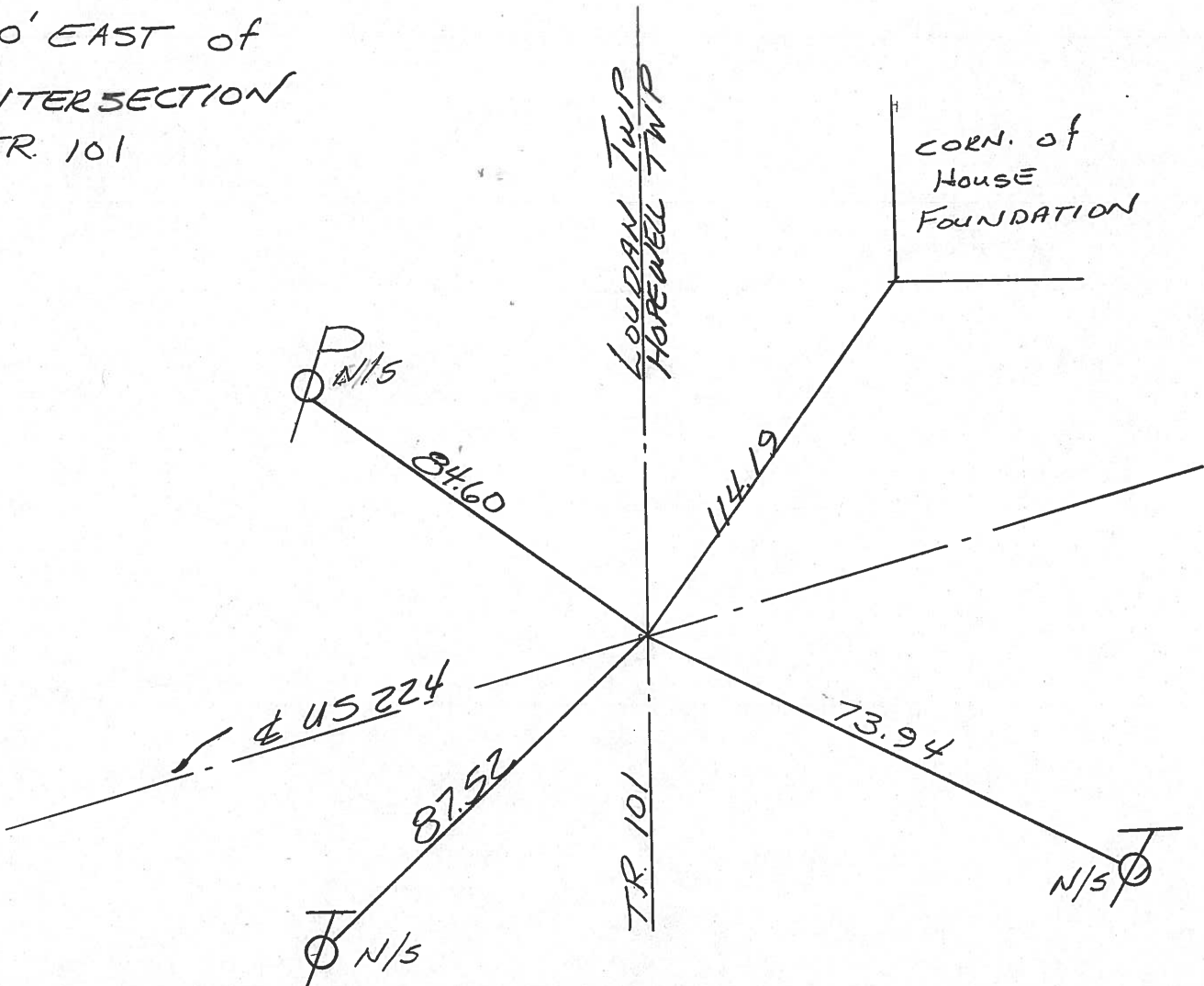
 TO EDGE PAVEMENT

S.L.M. 6.16

LOUDBON TWP	HOPE WELL TWP
25	30



PI
326 + 77.90
 $\Delta = 0^{\circ} 08' LT$
20' EAST of
INTERSECTION
T.R. 101



PERSONNEL TITLE PERSONNEL TITLE

COUNTY Seneca DATE 3-25-71

S. R. 224 WEATHER Fair

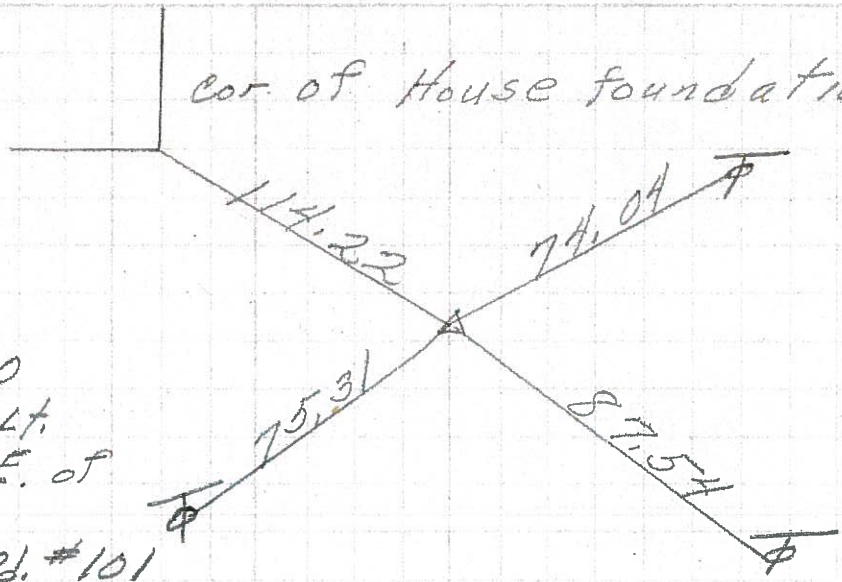
SEC. 0.00 TEMP. 40°

DESCRIPTION Hancock Co. Line to Tiffin LEFT CENTER LINE RIGHT JOB NO.

cor. of House foundation

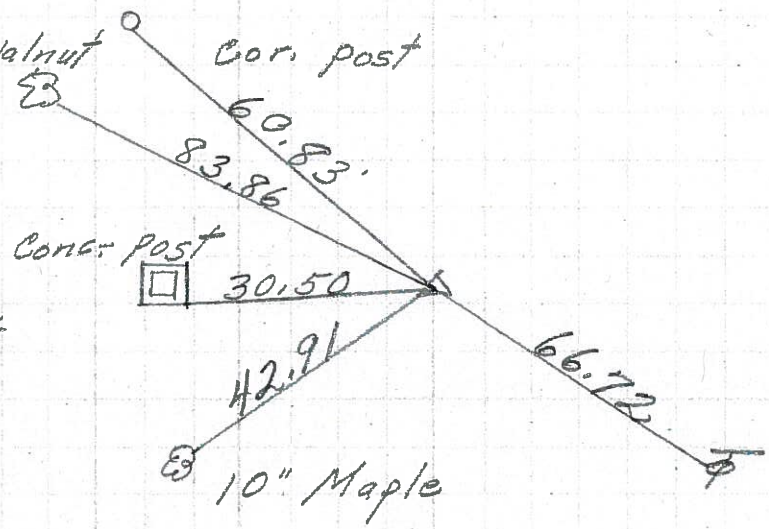
26

P. I.
326 + 77.90
 $\Delta = 0^{\circ} 08' Lt.$
Approx. 20' E. of
intersection
Twp. Line Rd. #101
8572



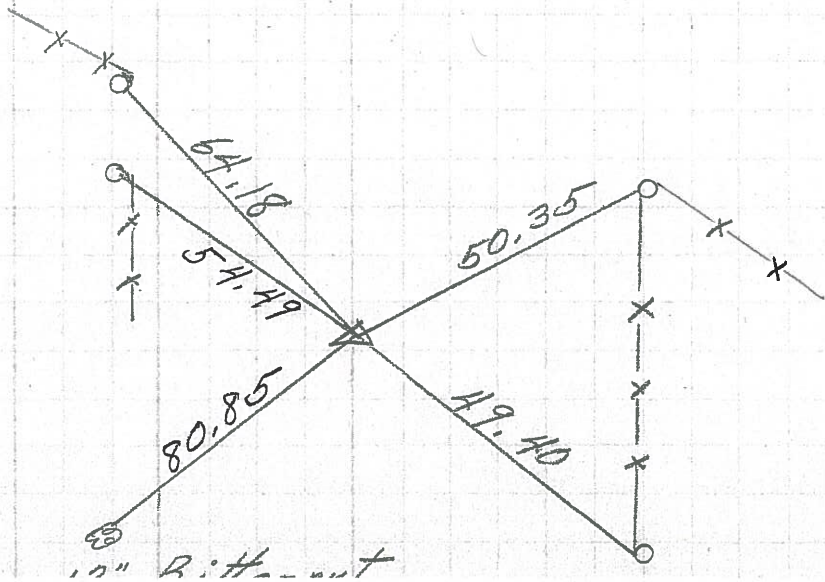
25

P. I.
316 + 64.90
 $\Delta = 0^{\circ} 35' Rt.$
P. K. Nail
8571



24

P. I.
297 + 73.40
 $\Delta = 0^{\circ} 06' Lt.$
P. K. Nail
8570



PERSONNEL	TITLE	PERSONNEL	TITLE	COUNTY	DATE
E. Krabill				GENEEOG	
J. Kowaleski				S. R. 224	
D. Brooks					
				SEC.	TEMP.

DESCRIPTION	LEFT	CENTER LINE	RIGHT	JOB NO.
-------------	------	-------------	-------	---------

