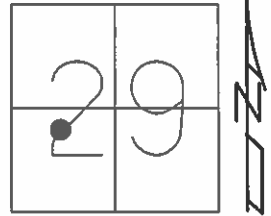


O.D.O.T. DISTRICT 2 SURVEY OFFICE (USE ONLY)

PERSONNEL	REFERENCE NO.	<u>28</u>	SHEET	<u>30</u>	OF	<u>39</u>
NOTES	LEU	DATE	<u>7/9/14</u>	ROUTE	<u>SR 224</u>	
H.C.	<u>HOMAN</u>	WEATHER	<u>SUNNY</u>	COUNTY	<u>SENECA</u>	
R.C.	<u>MEYER</u>	TEMP.	<u>75°</u>	TOWNSHIP	<u>HOPEWELL</u>	
	<u>THOMAS</u>			SECTION	<u>29</u>	
				T	<u>2</u>	R
					<u>14</u>	E

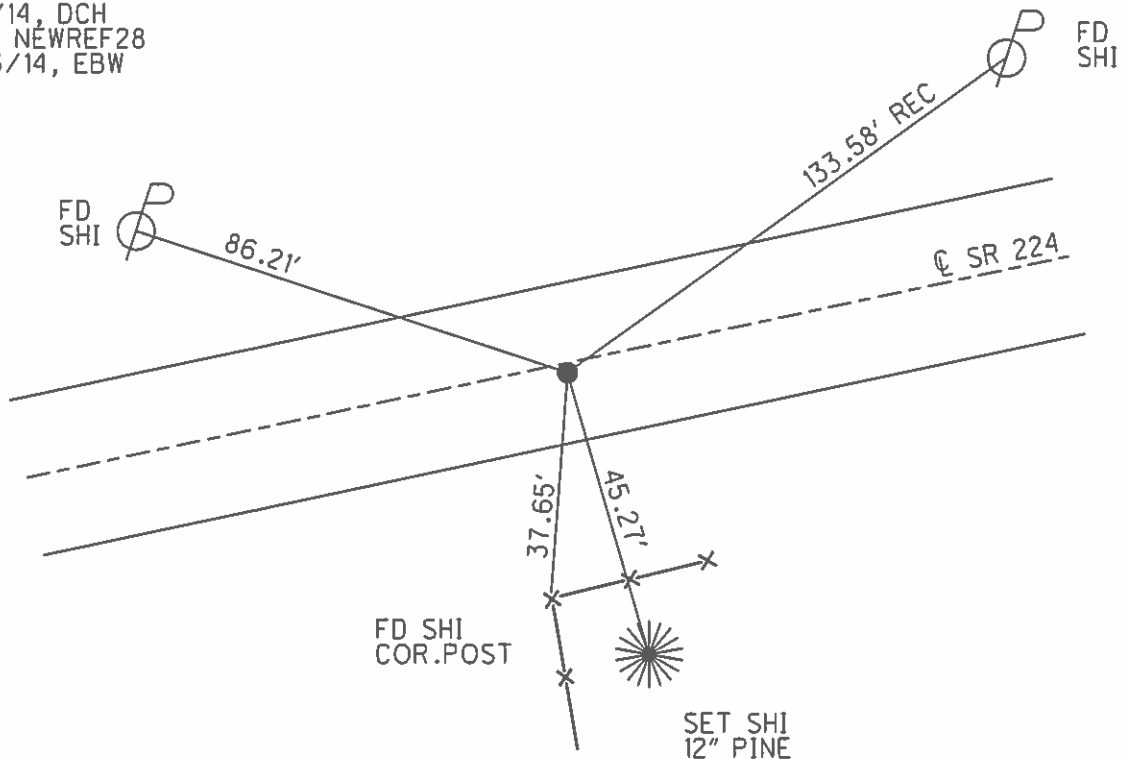
TYPE MONUMENT MAG NAIL  
 ON SURFACE - ~~BELOW~~ ON  
~~LEFT~~ - ℄ PAV'T - RIGHT 1'  
13.0' TO LT EDGE PAVEMENT  
 S.L.M. 393+16  
 Grid: Northing: 523177.662 Easting: 1753296.630



RECORD: P.I.  
 $\Delta = 0^\circ 34' \text{ LT}$   
 FD P.K. NAIL  
 4/16/04, DCH

SET MAG/WASHER  
 8/6/04, SAH  
 FD MAG NAIL  
 2/10/12, DCH

SET MAG/WASHER  
 7/9/14, DCH  
 GPS, NEWREF28  
 7/23/14, EBW



O.D.O.T. DISTRICT 2 SURVEY OFFICE

PERSONNEL

REFERENCE NO. 28

SHEET 4 OF 26

NOTES NUHFER

DATE 04-16-04

ROUTE US 224

H.C. HOOKER

WEATHER SUNNY

COUNTY SENECA

R.C. HOMAN

TEMP. 55°

TOWNSHIP HOPEWELL

SECTION 29

T 2 N R 14 E

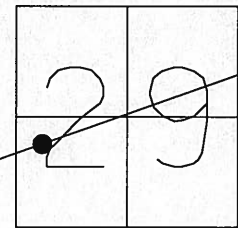
TYPE MONUMENT PK NAIL

ON SURFACE - ~~BELOW~~ ON

~~LEFT - C PAVT - RIGHT~~ 1' RT

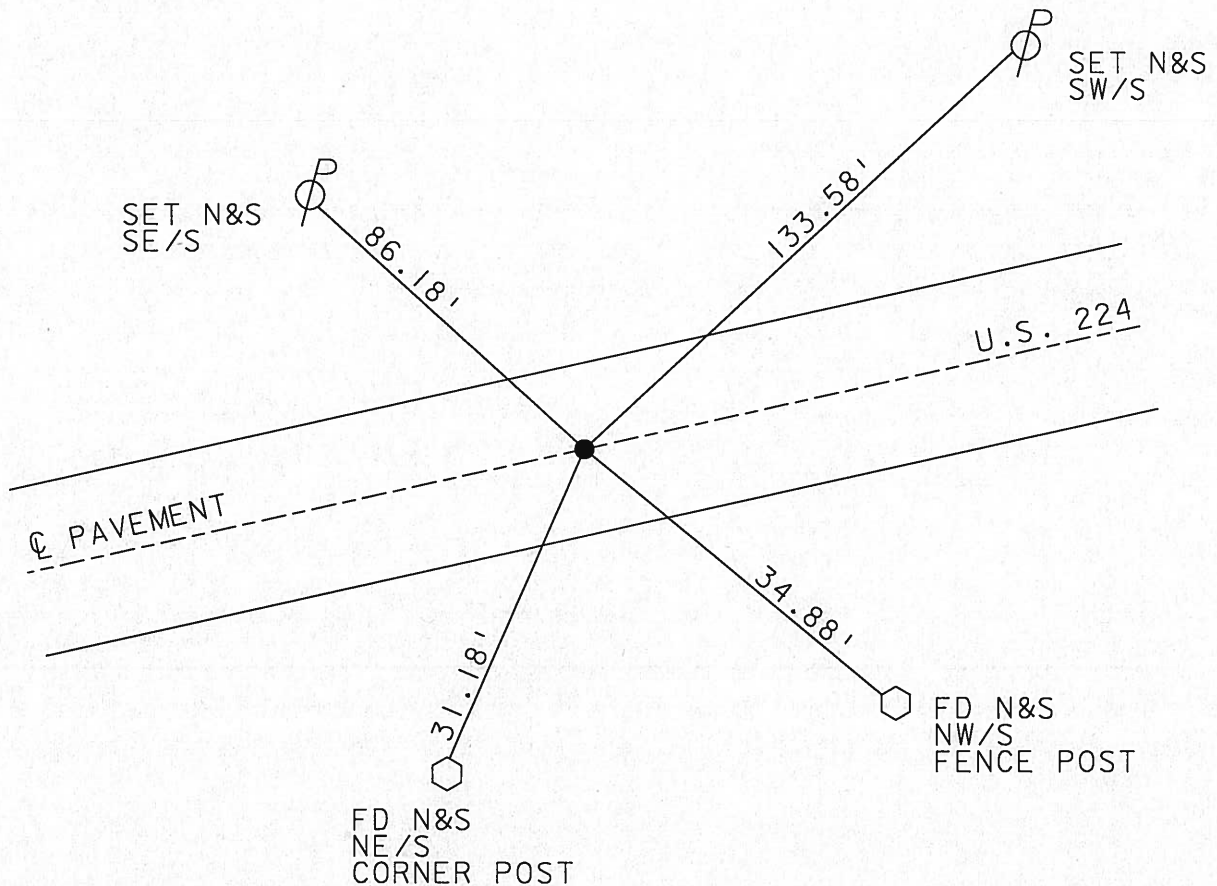
13.0' TO LT EDGE PAVEMENT

S.L.M. 393+28



P.I. DELTA = 0°34' LT-Record.

SET MAG NAIL  
& WASHER  
8-06-04  
SAH



O.D.O.T. DISTRICT 2 SURVEY OFFICE

PERSONNEL \_\_\_\_\_

REFERENCE NO. 28

SHEET 1 OF 10

NOTES BARBOUR

H.C. \_\_\_\_\_

DATE 9/4/91

ROUTE 224

R.C. Geyman

WEATHER SUNNY

COUNTY Sen.

TEMP. 75°

TOWNSHIP Hopewell

SECTION 29

T 2 N R 14 E

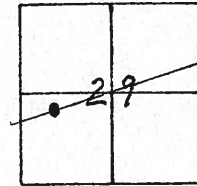
TYPE MONUMENT P.K. + Washer

~~ON SURFACE~~ - BELOW P.K. + Washer

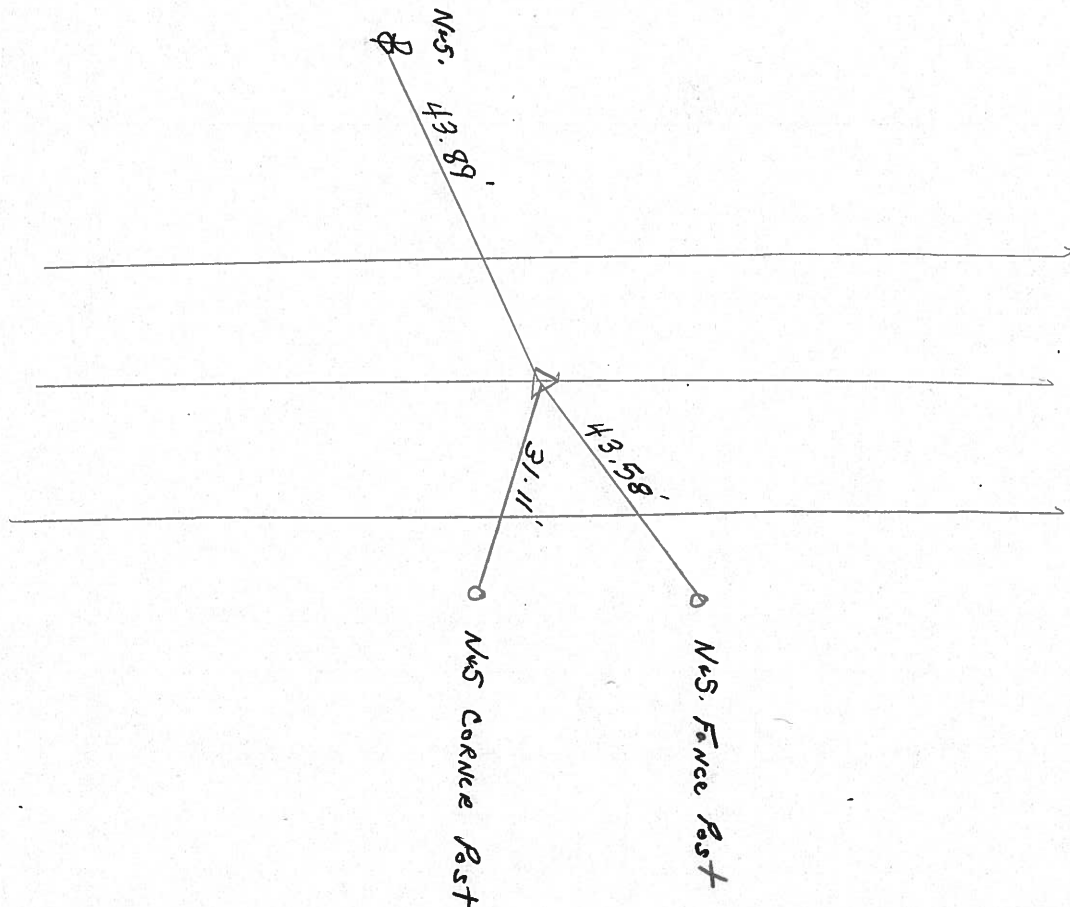
~~LEFT - C~~ PAV'T. - RIGHT 1'

TO \_\_\_\_\_ EDGE PAVEMENT

S.L.M. 393 + 28



P.T.  $\Delta = 0^{\circ} 34'$  LT.

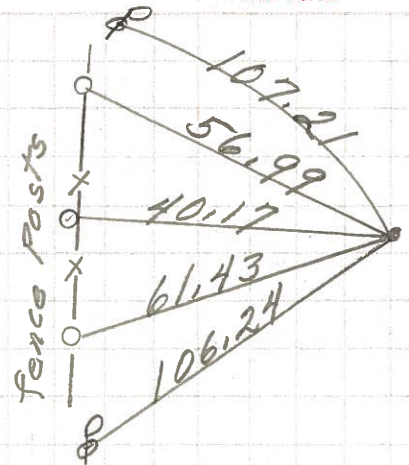


PERSONNEL	TITLE	PERSONNEL	TITLE

COUNTY Seneca DATE 3-26-71  
 S. R. 224 WEATHER Fair  
 SEC. 0.00 TEMP. 40°  
 DESCRIPTION Hancock Co. Line to Tiffin JOB NO. \_\_\_\_\_

(30)

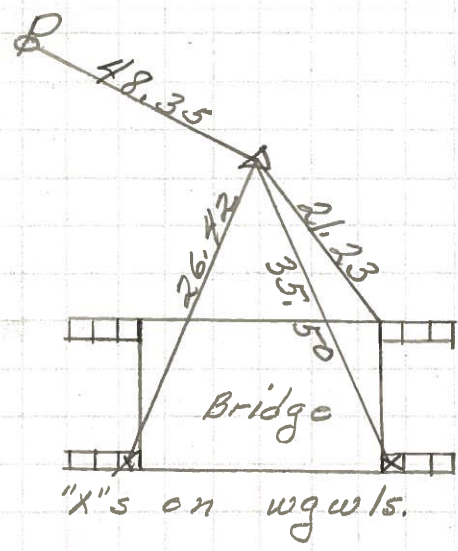
P. O. T.  
 431 + 81.48  
 P. K. Nail  
 W. of Wagner  
 Rd. # 109



8575

(29)

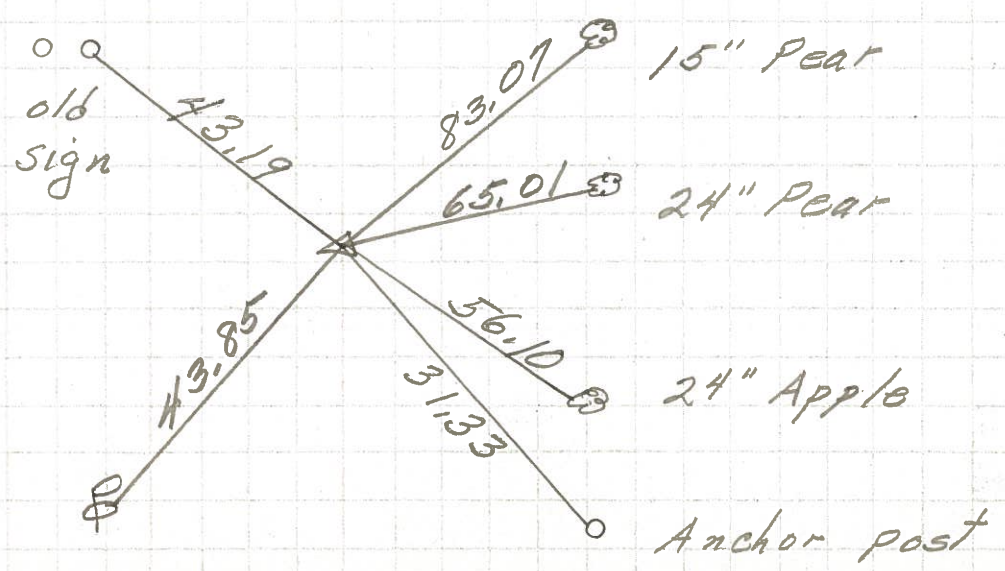
P. I.  
 411 + 60.81  
 $\Delta = 0^\circ 13' \text{ Rt.}$   
 P. K. Nail



8574

(28)

P. I.  
 393 + 92.71  
 $\Delta = 0^\circ 34' \text{ Lt.}$   
 P. K. Nail



8573



PERSONNEL TITLE PERSONNEL TITLE COUNTY GENEEO DATE \_\_\_\_\_  
 E. Kravill \_\_\_\_\_ J. Kowaleski \_\_\_\_\_ S. R. 224 WEATHER \_\_\_\_\_  
 D. Brooks \_\_\_\_\_ SEC. \_\_\_\_\_ TEMP. \_\_\_\_\_

DESCRIPTION LEFT CENTER LINE RIGHT JOB NO.

