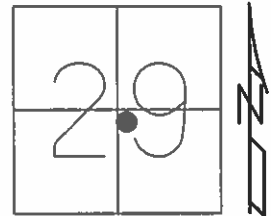


O.D.O.T. DISTRICT 2 SURVEY OFFICE (USE ONLY)

PERSONNEL _____ REFERENCE NO. 29 SHEET 31 OF 39
 NOTES HOMAN DATE 6/7/13 ROUTE SR 224
 H.C. HOMAN WEATHER CLOUDY COUNTY SENECA
 R.C. ROUSOS TEMP. 55° TOWNSHIP HOPEWELL
 _____ SECTION 29
 _____ T 2 N R 14 E

TYPE MONUMENT MONBOX
 ON SURFACE - ~~BELOW~~ ON
 LEFT - ☉ PAV'T - ~~RIGHT~~ 0.7'
11.5' TO LT EDGE PAVEMENT
 S.L.M. 410+87

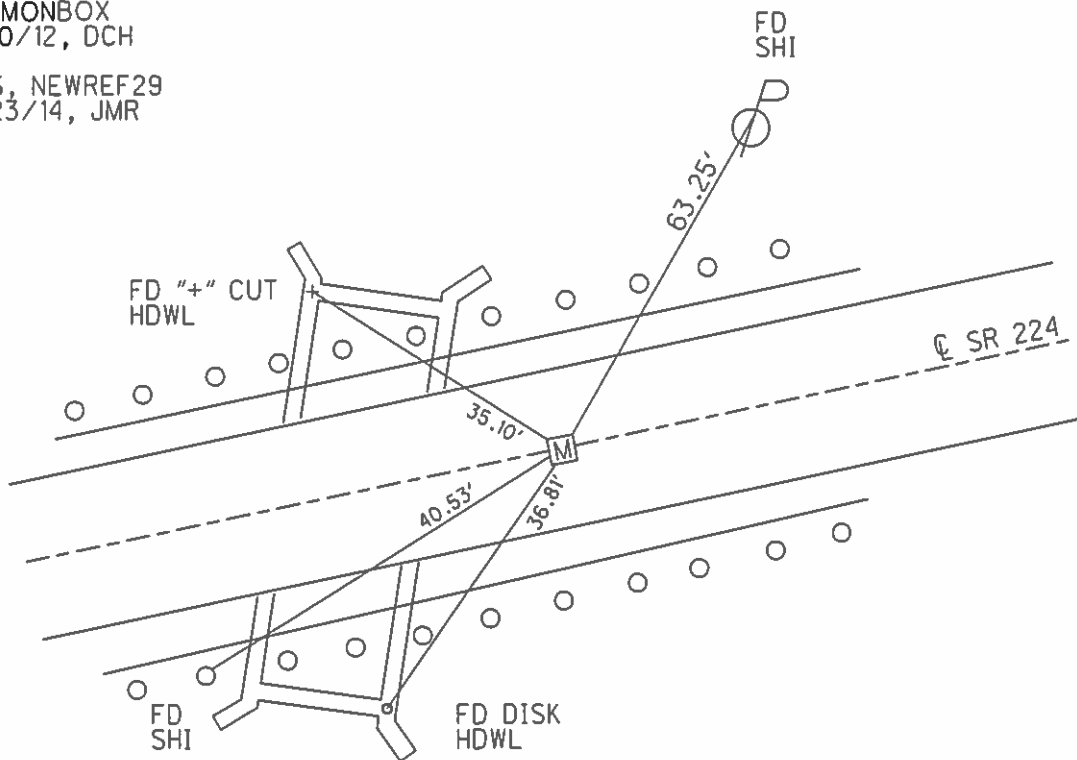


Grid: Northing: 523506.900 Easting: 1755033.997

RECORD: P.I.
 $\Delta = 0^{\circ}13' RT$
 FD MONBOX
 4/16/04, DCH

FD MONBOX
 2/10/12, DCH

GPS, NEWREF29
 7/23/14, JMR



O.D.O.T. DISTRICT 2 SURVEY OFFICE

PERSONNEL

REFERENCE NO. 29

SHEET 5 OF 26

NOTES NUHFER

DATE 04-16-04

ROUTE US 224

H.C. HOOKE

WEATHER SUNNY

COUNTY SENECA

R.C. HOMAN

TEMP. 55°

TOWNSHIP HOPEWELL

SECTION 29

T 2 N R 14 E

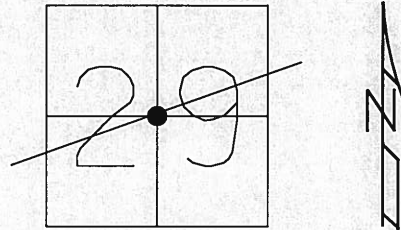
TYPE MONUMENT MONUMENT BOX

ON SURFACE - ~~BELOW~~ ON

LEFT - ~~C PAVT~~ - ~~RIGHT~~ 0.7' LT

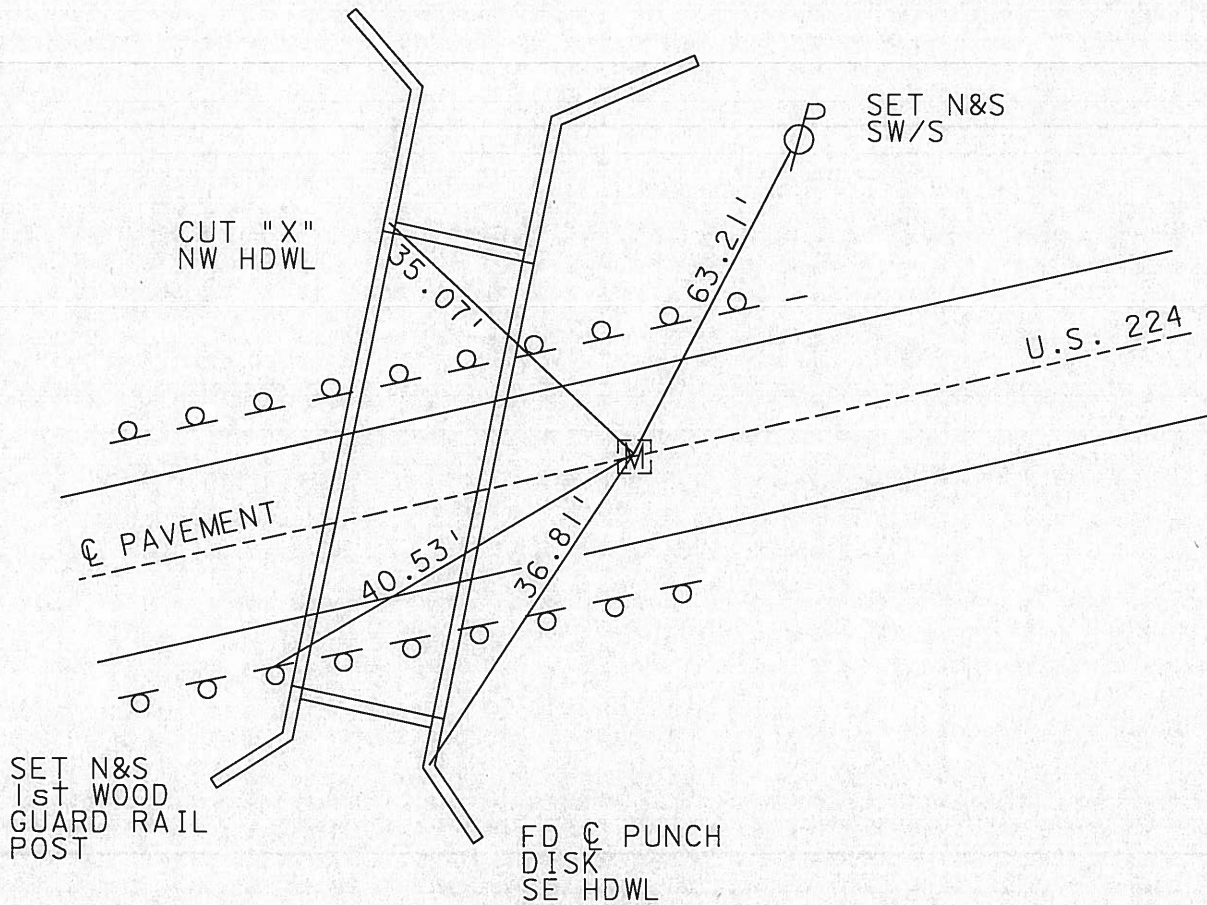
11.5' TO LT EDGE PAVEMENT

S.L.M. 410+99



P. I. DELTA = 0°13' RT. *Record.*

DID NOT OPEN MONUMENT BOX. MEASURED TO CTR of CD. Box is O.K. 8-6-04



O.D.O.T. DISTRICT 2 SURVEY OFFICE

PERSONNEL _____

REFERENCE NO. 29

SHEET 2 OF 10

NOTES Barbour

H.C. _____

DATE 9/4/91

ROUTE 224

R.C. GeyMAN

WEATHER SUNNY

COUNTY Sen.

TEMP. 80°

TOWNSHIP Hope well

SECTION 29

T2 N R 14 E

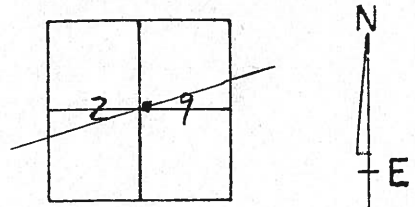
TYPE MONUMENT P.K. - Washer

ON SURFACE - BELOW P.K.

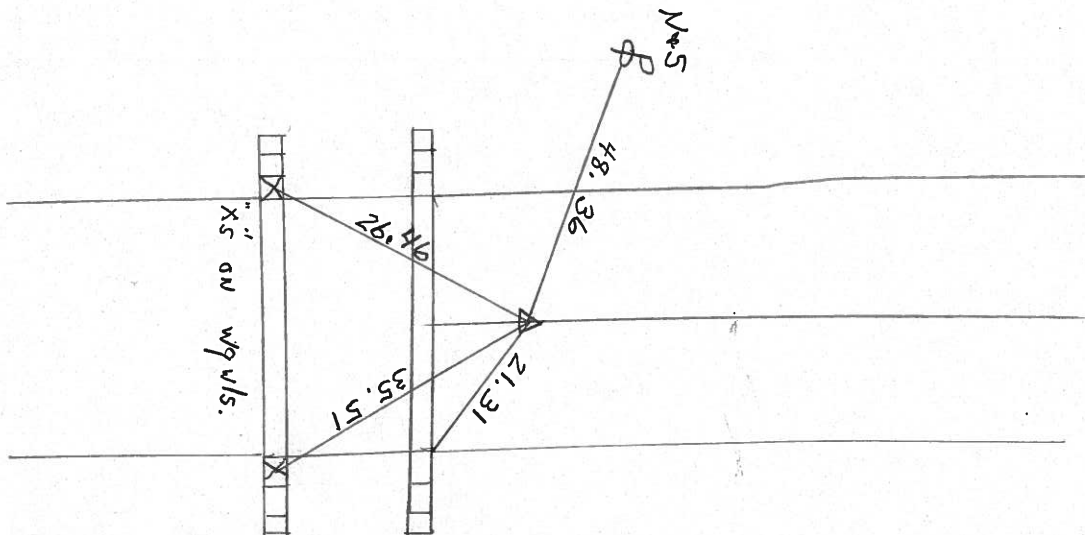
LEFT- & PAV'T. - RIGHT 1'

TO _____ EDGE PAVEMENT

S.L.M. 410 + 99



P.I.
 $\Delta = 0^\circ 13' RT.$



PERSONNEL TITLE PERSONNEL TITLE

COUNTY Seneca DATE 3-26-71

S. R. 224 WEATHER Fair

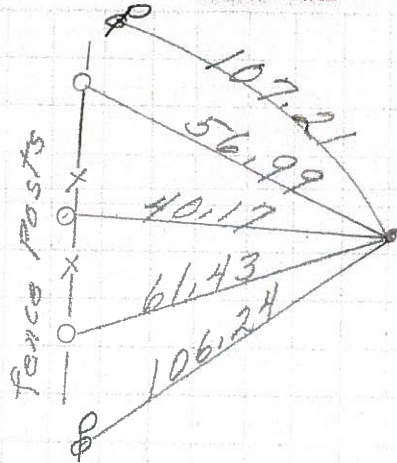
SEC. 0.00 TEMP. 40°

DESCRIPTION Hancock Co. Line to Tiffin JOB NO. _____

LEFT CENTER LINE RIGHT

(30)

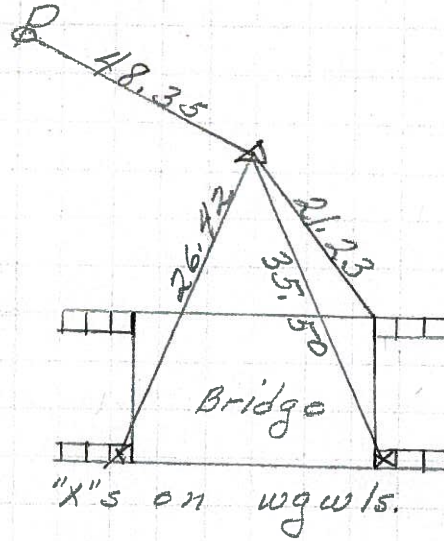
P. O. T.
431+81.48
P. K. Nail
W. of Wagner
Rd. # 109



8575

(29)

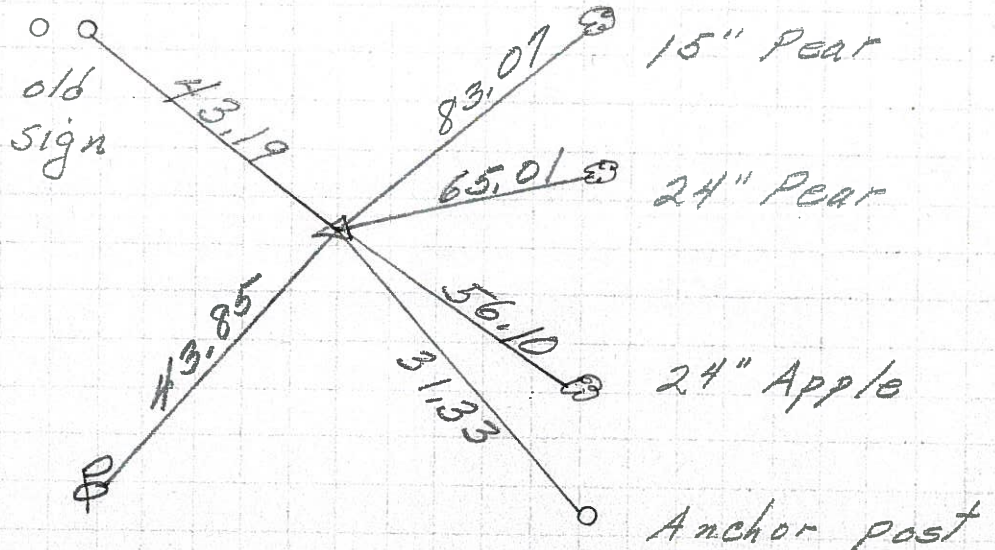
P. I.
411+60.81
 $\Delta = 0^\circ 13' \text{ Rt.}$
P. K. Nail



8574

(28)

P. I.
393+92.71
 $\Delta = 0^\circ 34' \text{ Lt.}$
P. K. Nail



8573

PERSONNEL TITLE PERSONNEL TITLE

COUNTY Seneca

DATE 12-5-63

E. Kra Bill

J. Kowaleski

D. Brooks

S. R. 224

WEATHER

SEC.

TEMP.

DESCRIPTION

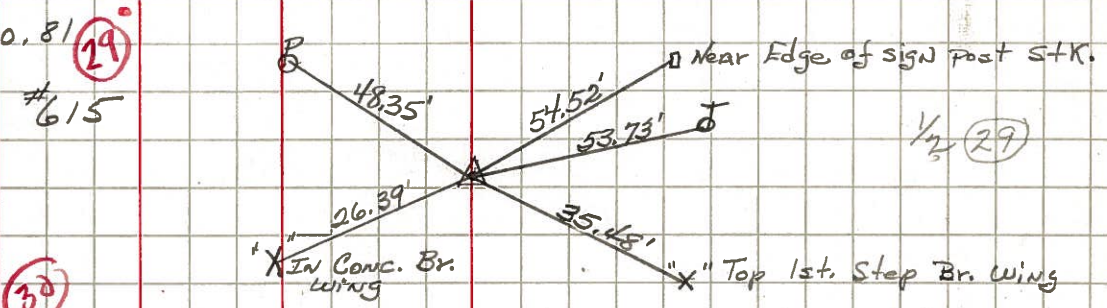
LEFT

CENTER LINE

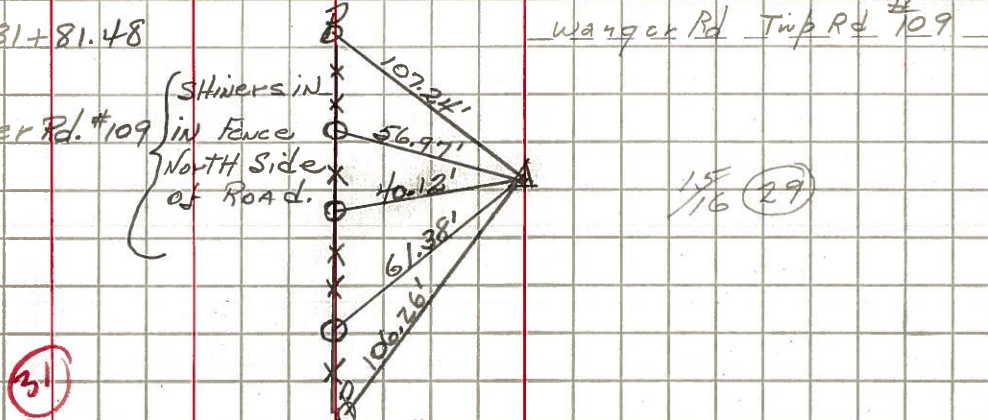
RIGHT

JOB NO.

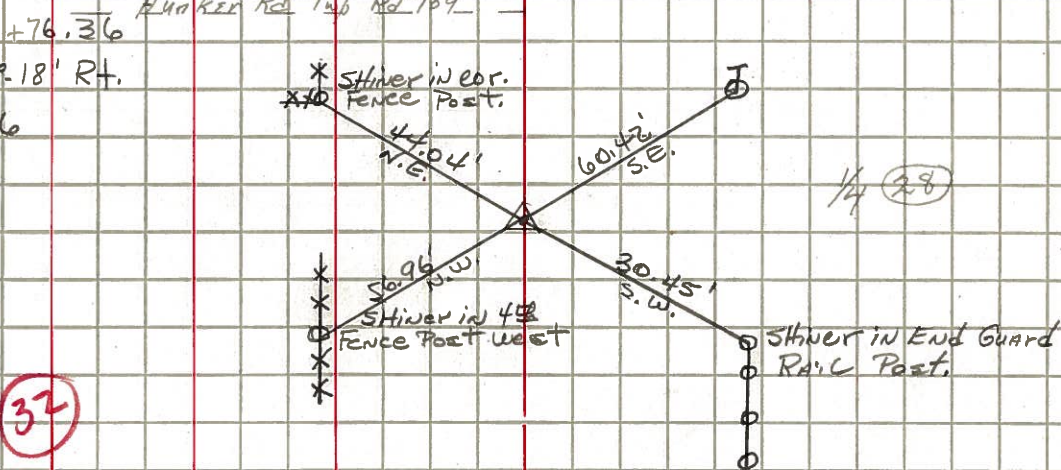
P.I. Sta. 411+60.81
P.K. Nail
 $\Delta = 0^\circ 13' \text{ Rt.}$
#615



P.O.T. Sta. 431+81.48
P.K. Nail
West of Wagner Rd. #109
(Shiners in Fence North Side of Road.)



P.I. Sta. 447+76.36
P.K. Nail
 $\Delta = 0^\circ 18' \text{ Rt.}$
#616



P.I. Sta. 466+81.91
P.K. Nail
 $\Delta = 0^\circ 01' \text{ Rt.}$
#617

