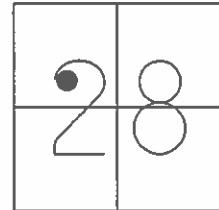


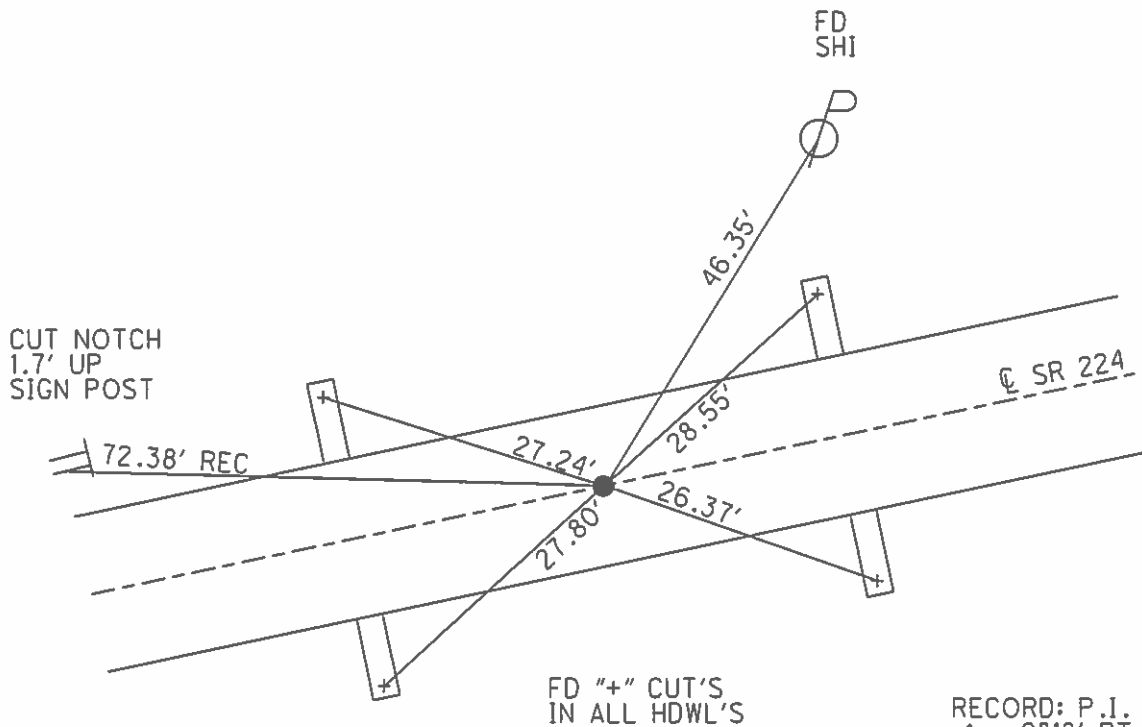
O.D.O.T. DISTRICT 2 SURVEY OFFICE (USE ONLY)

PERSONNEL _____ REFERENCE NO. 31 SHEET 33 OF 39
 NOTES HOMAN DATE 6/7/13 ROUTE SR 224
 H.C. HOMAN WEATHER CLOUDY COUNTY SENECA
 R.C. ROUSOS TEMP. 60° TOWNSHIP HOPEWELL
 _____ SECTION 28
 _____ T 2 N R 14 E

TYPE MONUMENT MAG NAIL
 ON SURFACE - ~~BELOW~~ ON
 LEFT - ☉ PAV'T - RIGHT ON
12.7' TO RT EDGE PAVEMENT
 S.L.M. 447+08



Grid: Northing: 524167.824 Easting: 1758588.523



RECORD: P.I.
 $\Delta = 0^{\circ}18'$ RT
 P.K./WASHER
 4/16/04, DCH
 SET MAG/WASHER
 8/7/04, SAH

FD MAG NAIL
 2/10/12
 SET MAG/WASHER
 7/9/14, DCH
 GPS, NEWREF31
 7/23/14, JMR

O.D.O.T. DISTRICT 2 SURVEY OFFICE

PERSONNEL

REFERENCE NO. 31

SHEET 7 OF 26

NOTES NUHFER

DATE 04-16-04

ROUTE US 224

H.C. HOOKER

WEATHER SUNNY

COUNTY SENECA

R.C. HOMAN

TEMP. 60°

TOWNSHIP HOPEWELL

SECTION 28

T 2 N R 14 E

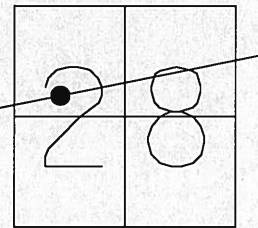
TYPE MONUMENT PK & WASHER

ON SURFACE - ~~BELOW~~ ON

LEFT - ~~C PAVT - RIGHT~~ 1.0' LT

12.7' TO RT EDGE PAVEMENT

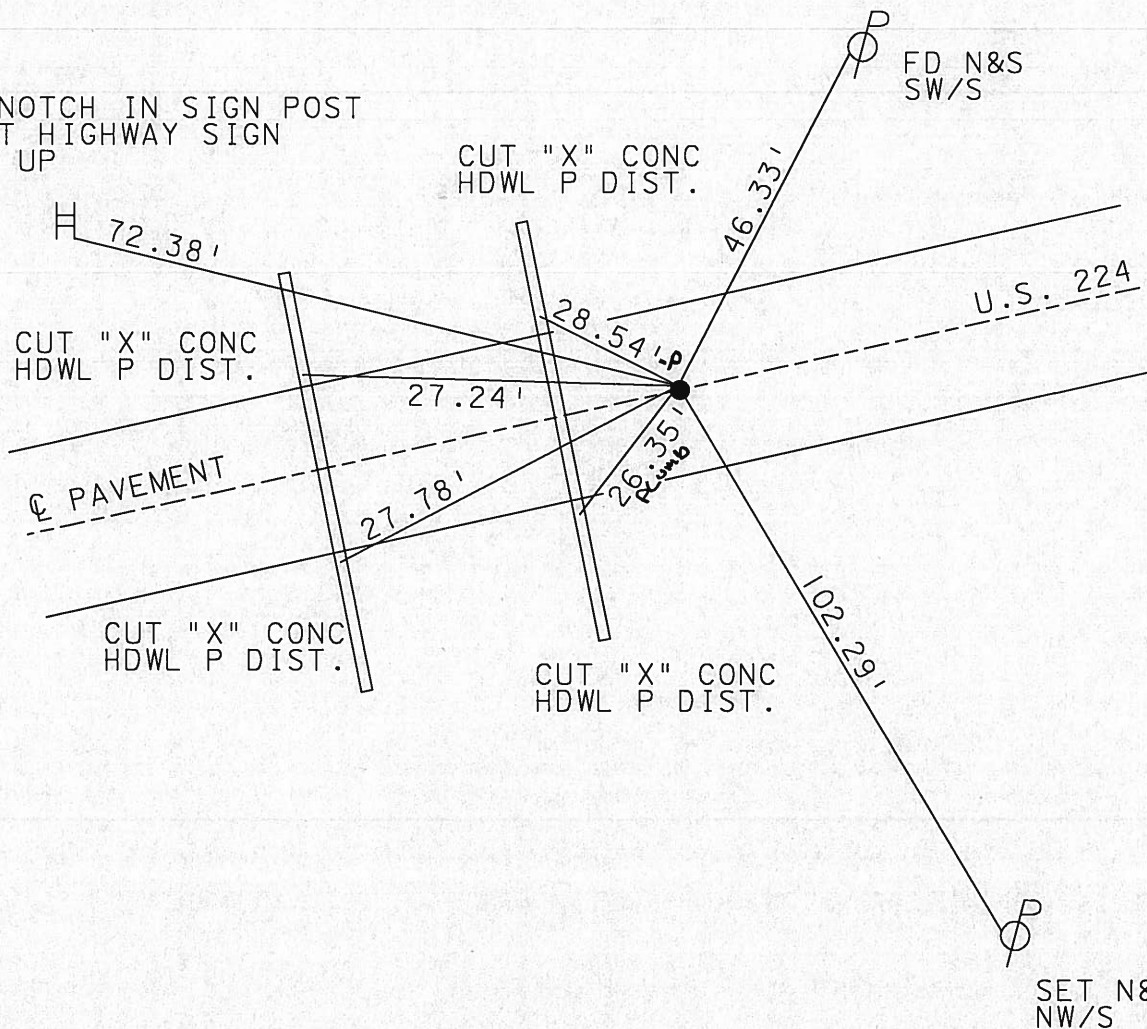
S.L.M. 447+28



P.I. DELTA=0°18' RT. -Record

SET MAG NAIL
& WASHER
8-07-04
SAH

CUT NOTCH IN SIGN POST
ADOPT HIGHWAY SIGN
1.7' UP



O.D.O.T. DISTRICT 2 SURVEY OFFICE

PERSONNEL _____

REFERENCE NO. 31

SHEET 4 OF 10

NOTES Baebour

H.C. _____

DATE 9/4/91

ROUTE 224

R.C. Geyman

WEATHER SUNNY

COUNTY Sen.

TEMP. 75°

TOWNSHIP Hope well

SECTION 28

T 2 N R 14 E

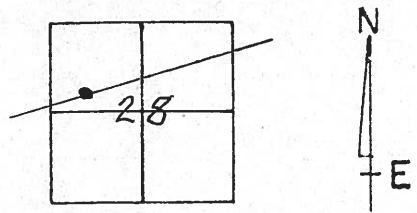
TYPE MONUMENT P.K. Washer

~~ON SURFACE~~ - BELOW P.K.

LEFT- & PAV'T. - ~~RIGHT~~ 1'

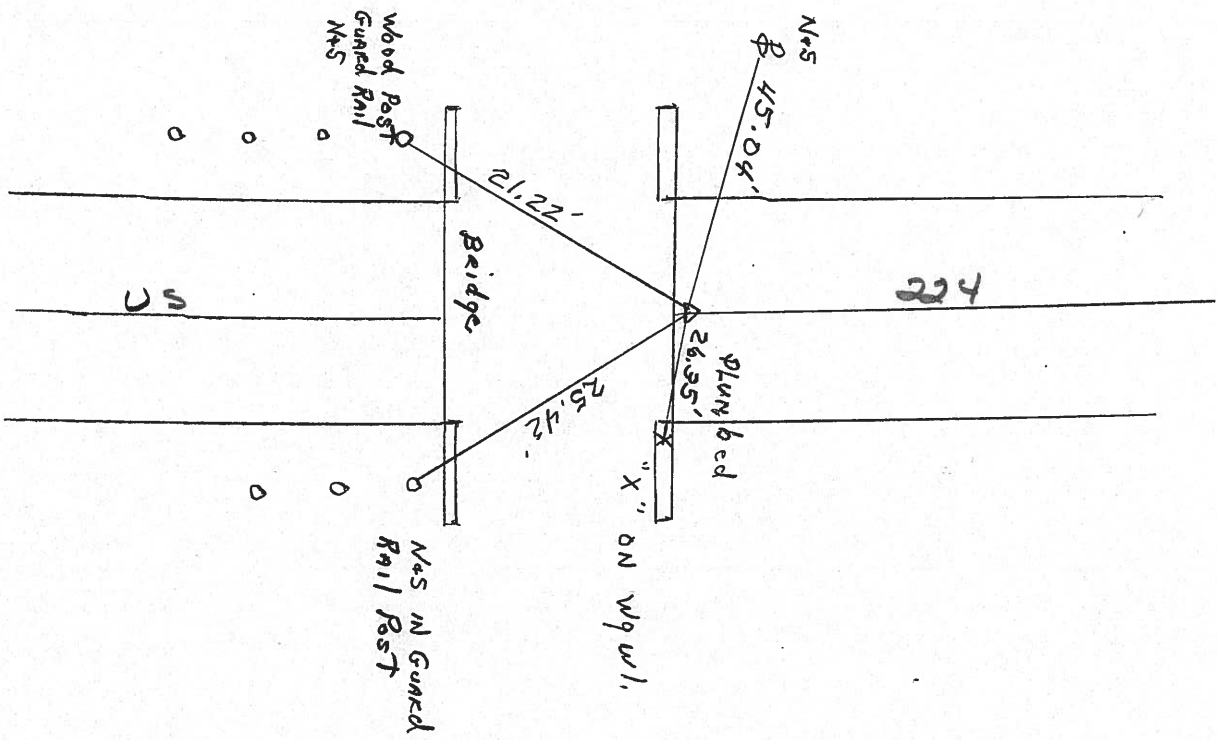
TO _____ EDGE PAVEMENT

S.L.M. 447+28



P.I.

$\Delta = 0^{\circ} 18' RT.$



PERSONNEL TITLE PERSONNEL TITLE

COUNTY Seneca DATE 3-26-71

S. R. 224 WEATHER Fair

SEC. 0.00 TEMP. 40°

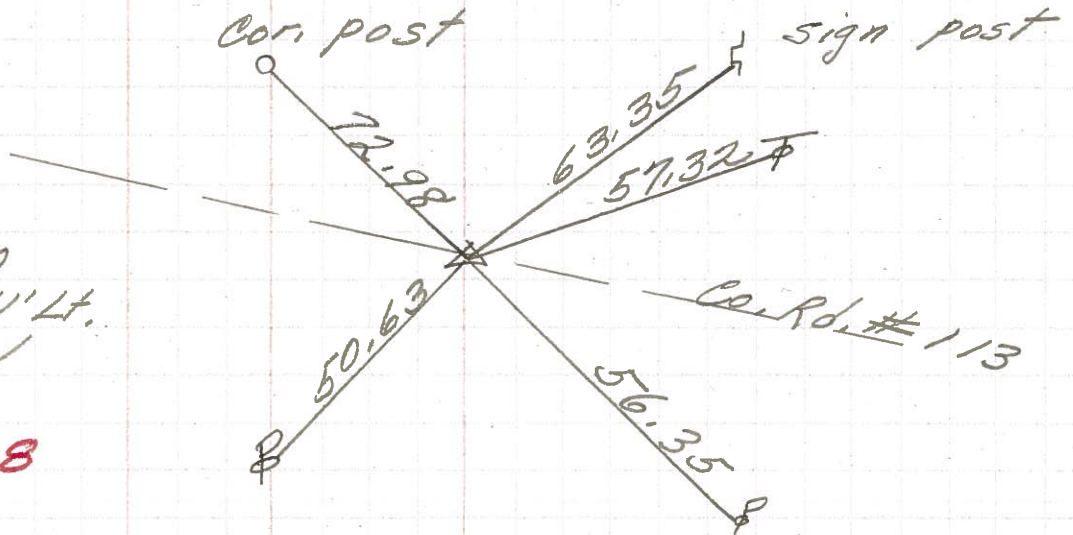
DESCRIPTION Hancock Co. Line to Tiffin JOB NO. _____

LEFT CENTER LINE RIGHT

33

P.I.
488+43.60
 $\Delta = 0^\circ 41' Lt.$
P.K. Nail

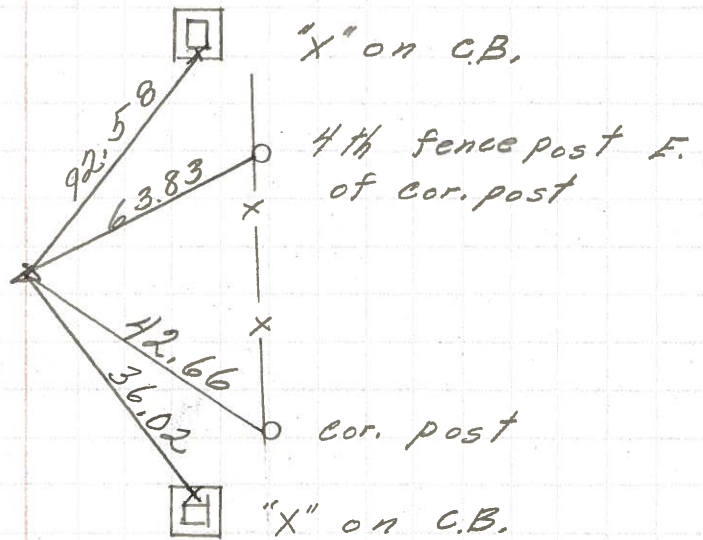
8578



32

P.I.
466+81.91
 $\Delta = 0^\circ 01' Rt.$
P.K. Nail

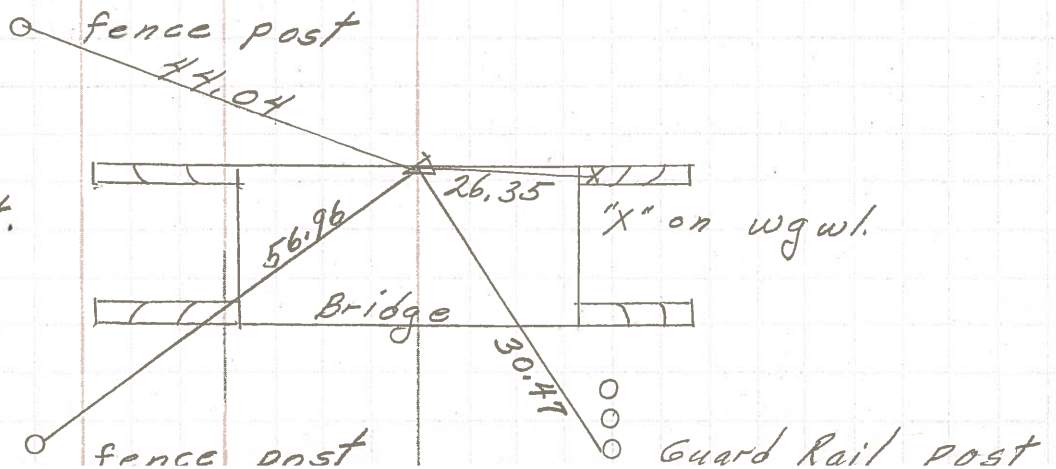
8577



31

P.I.
447+76.36
 $\Delta = 0^\circ 18' Rt.$
P.K. Nail

8576



PERSONNEL TITLE PERSONNEL TITLE

E. Kra Bill

COUNTY SENECA

DATE 12-5-63

J. Kowaleski

S. R. 224

WEATHER

D. Brooks

SEC.

TEMP.

DESCRIPTION

LEFT

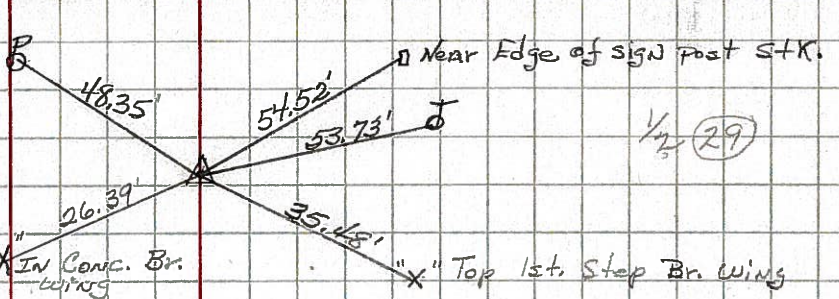
CENTER LINE

RIGHT

JOB NO.

P.I. STA. 411+60.81
P.K. NAIL
 $\Delta = 0^\circ 13' RT.$
#615

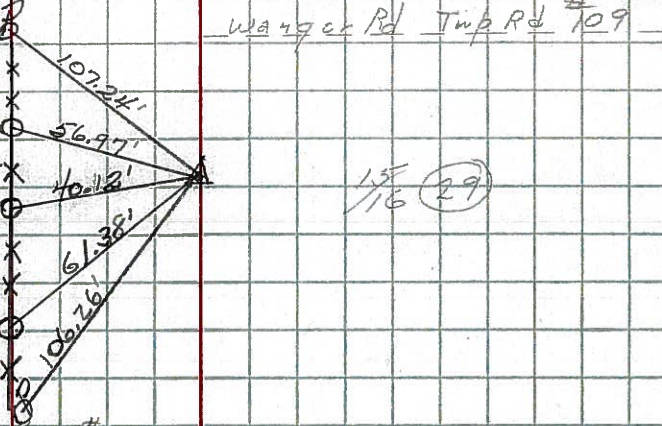
29



P.O.T. STA. 431+81.48
P.K. NAIL
West of Ungwer Rd. #109

30

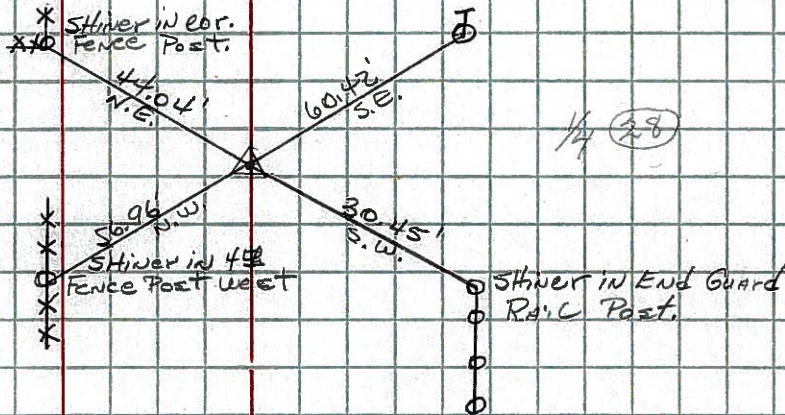
Shiners in
in Fence
North Side
of Road.



P.I. STA. 447+76.36
P.K. NAIL
 $\Delta = 0^\circ 18' RT.$
#616

31

Harker Rd Imp Rd #109



P.I. STA. 466+81.91
P.K. NAIL
 $\Delta = 0^\circ 01' RT.$
#617

32

