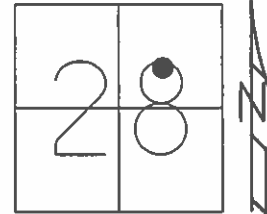


O.D.O.T. DISTRICT 2 SURVEY OFFICE (USE ONLY)

PERSONNEL _____ REFERENCE NO. 32 SHEET 34 OF 39

NOTES HOMAN DATE 6/7/13 ROUTE SR 224
 H.C. HOMAN WEATHER CLOUDY COUNTY SENECA
 R.C. ROUSOS TEMP. 60° TOWNSHIP HOPEWELL
 _____ SECTION 28
 _____ T 2 N R 14 E

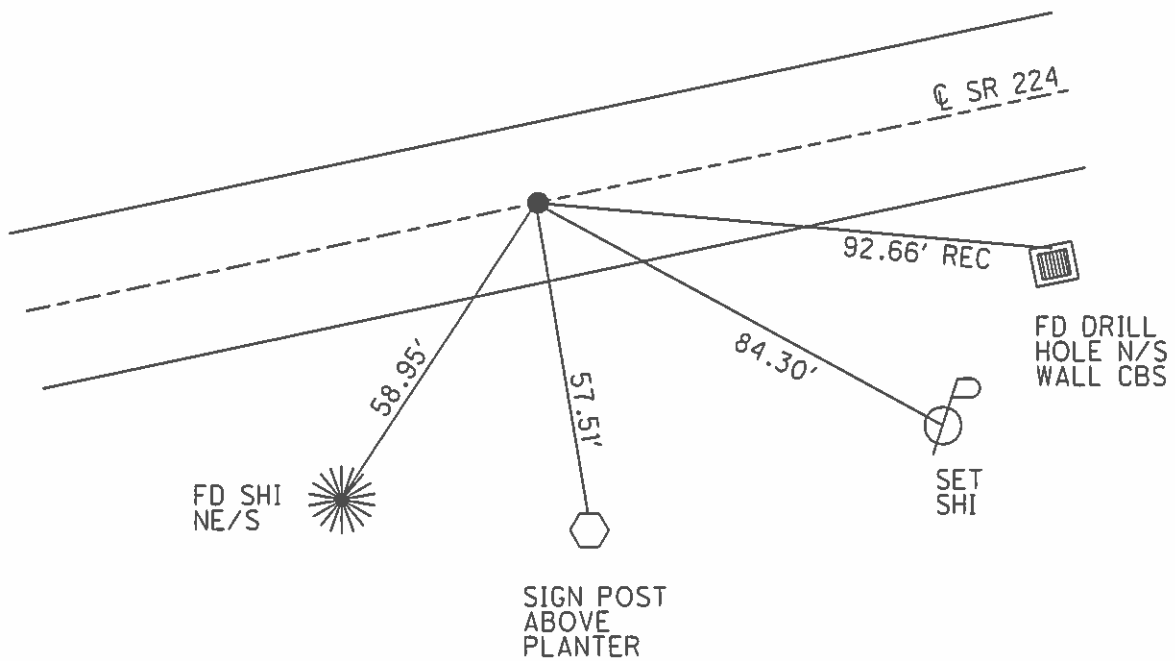
TYPE MONUMENT MAGWASHER
 ON SURFACE - ~~BELOW~~ ON
~~LEFT~~ - Q PAV'T - RIGHT 0.5'
12.7' TO RT EDGE PAVEMENT
 S.L.M. 466+20



Grid: Northing: 524505.015 Easting: 1760464.012

RECORD: P.I.
 $\Delta = 0^{\circ} 01' RT$
 P.K./WASHER
 4/23/04, DCH
 SET MAG/WASHER
 7/1/04, RGN

FD MAG/WASHER
 2/10/12
 SET MAG/WASHER
 7/9/14, DCH
 GPS, NEWREF32
 7/23/14, JMR



O.D.O.T. DISTRICT 2 SURVEY OFFICE

PERSONNEL

REFERENCE NO. 32

SHEET 8 OF 26

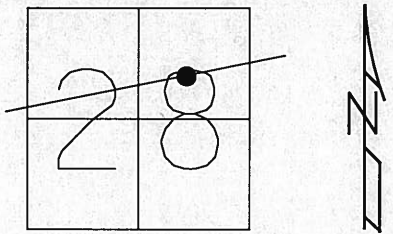
NOTES _____
 H.C. HUSS

 R.C. HOMAN
HOOKER
ARMS

DATE 04-23-04
 WEATHER CLOUDY
 TEMP. 48°

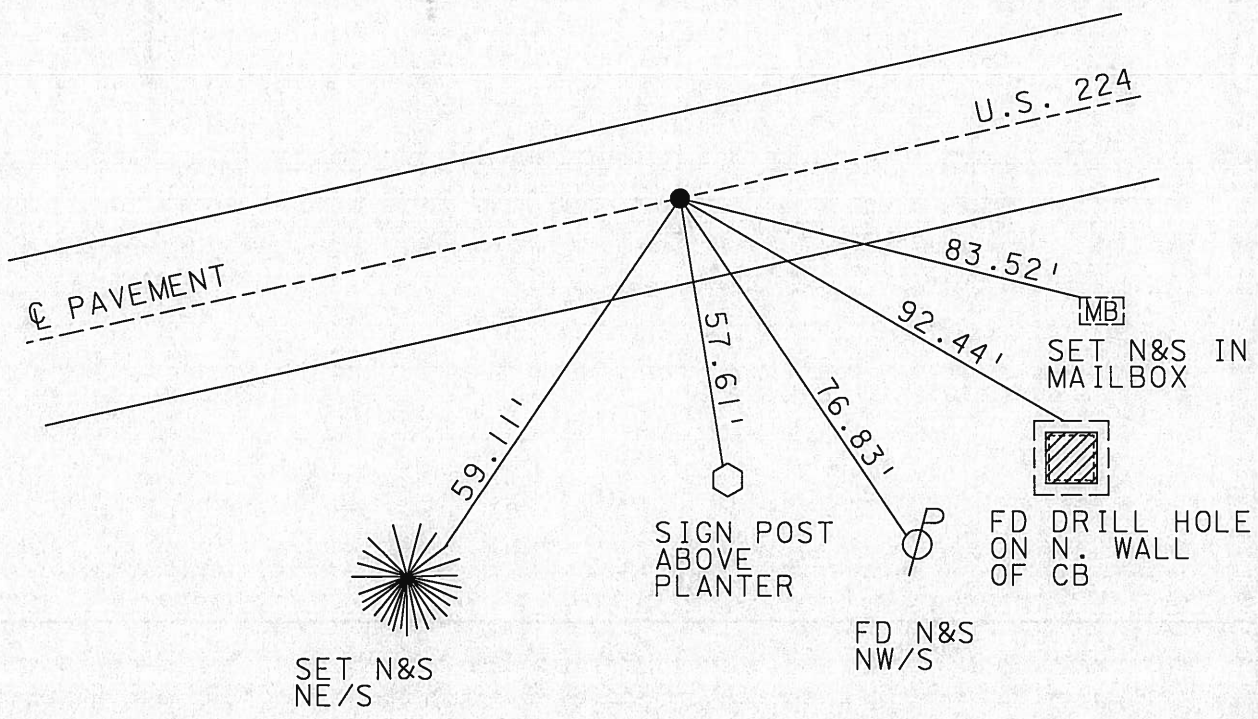
ROUTE US 224
 COUNTY SENECA
 TOWNSHIP HOPEWELL
 SECTION 28
T 2 N R 14 E

TYPE MONUMENT PK & WASHER
 ON SURFACE - ~~BELOW~~ ON
~~LEFT - C PAVT - RIGHT~~ 0.55' RT
12.7' TO RT EDGE PAVEMENT
 S.L.M. 466+40



P.I. DELTA=0°01' RT. - Record

SET MAG NAIL & WASHER
 7-01-04
 RGN



O.D.O.T. DISTRICT 2 SURVEY OFFICE

PERSONNEL _____

REFERENCE NO. 32-4

SHEET 5 OF 10

NOTES Baebour

H.C. _____

DATE 9/4/91

ROUTE 224

R.C. Geyman

WEATHER SUNNY

COUNTY Sen.

TEMP. 75°

TOWNSHIP Hopewell

SECTION 28

T2 N R 14 E

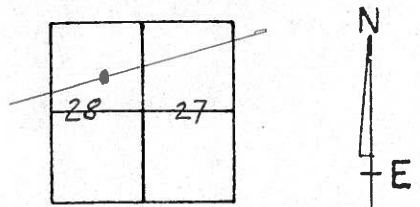
TYPE MONUMENT P.K. + Washer

~~ON SURFACE~~ - BELOW P.K. WASHER

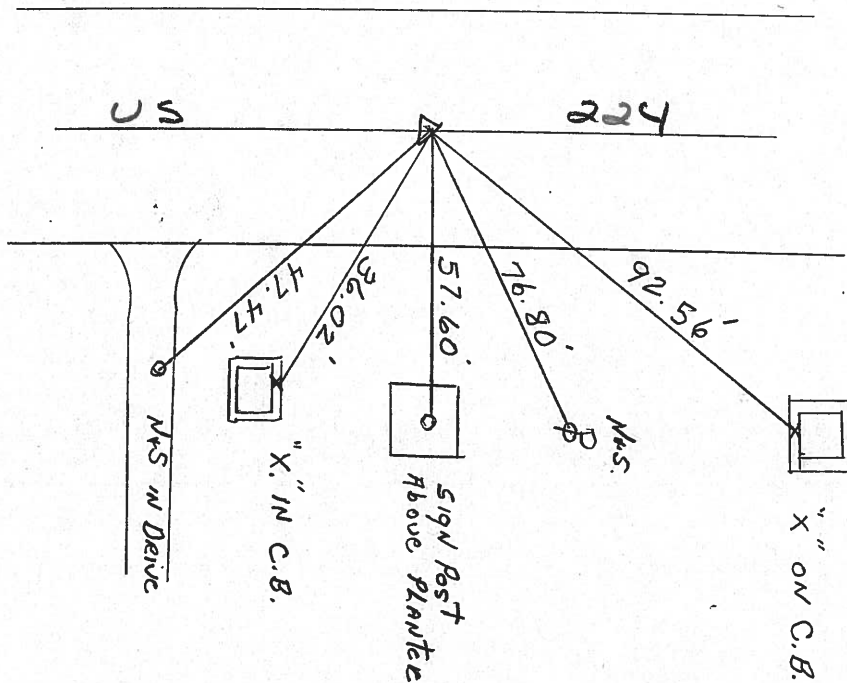
~~LEFT - C. PAV'T. - RIGHT~~

TO EDGE PAVEMENT

S.L.M. 466 + 40



$\Delta = 0^{\circ} 01' RT.$



PERSONNEL TITLE PERSONNEL TITLE

COUNTY Seneca DATE 3-26-71

S. R. 224 WEATHER Fair

SEC. 0.00 TEMP. 40°

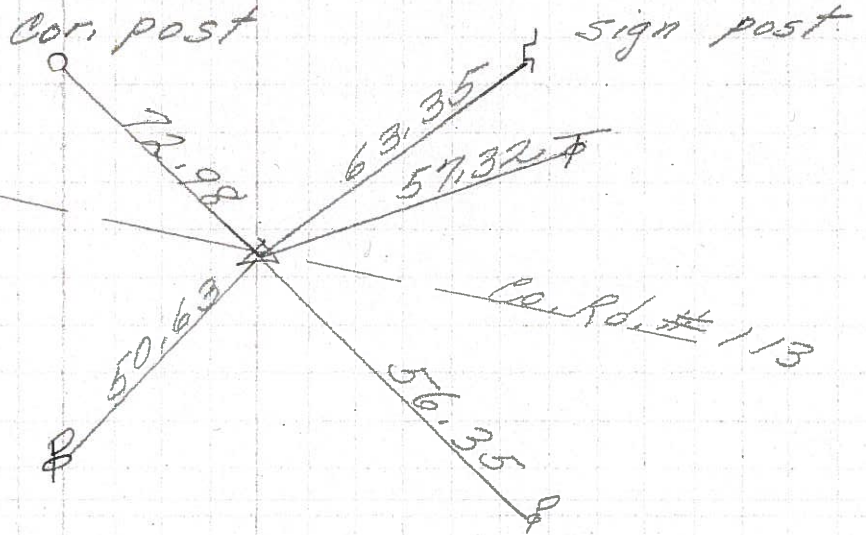
DESCRIPTION Hancock Co. Line to Tiffin JOB NO. _____

LEFT CENTER LINE RIGHT

33

P.I.
488 + 43.60
 $\Delta = 0^\circ 41' Lt.$
P.K. Nail

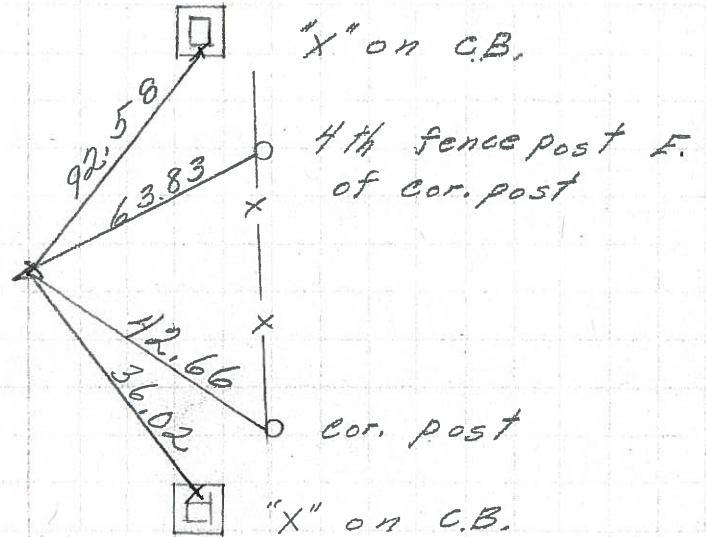
8578



32

P.I.
466 + 81.91
 $\Delta = 0^\circ 01' Rt.$
P.K. Nail

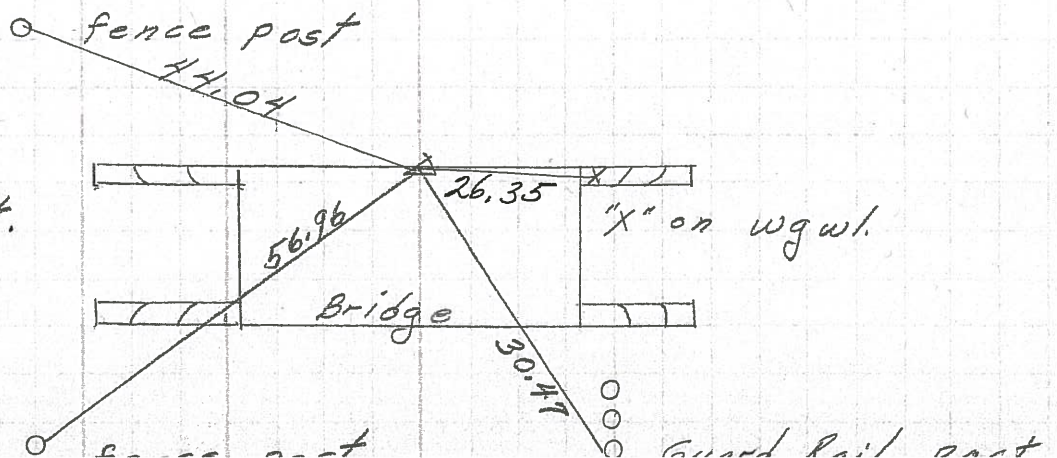
8577



31

P.I.
447 + 76.36
 $\Delta = 0^\circ 18' Rt.$
P.K. Nail

8576



PERSONNEL TITLE PERSONNEL TITLE

E. Kra Bill

COUNTY Seneca

DATE 12-5-63

J. Kowaleski

S. R. 224

WEATHER

D. Brooks

SEC.

TEMP.

DESCRIPTION

LEFT

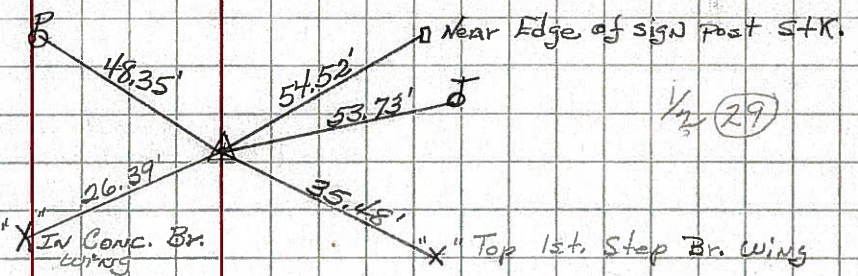
CENTER LINE

RIGHT

JOB NO.

P.I. STA. 411+60.81
P.K. NAIL
 $\Delta = 0^\circ 13' \text{ Rt}$
#615

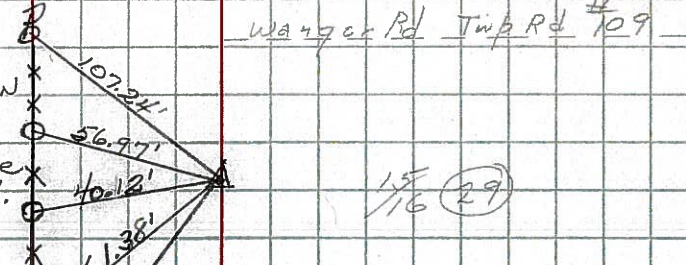
(29)



P.O.T. STA. 431+81.48
P.K. NAIL
West of Wagner Rd. #109

(30)

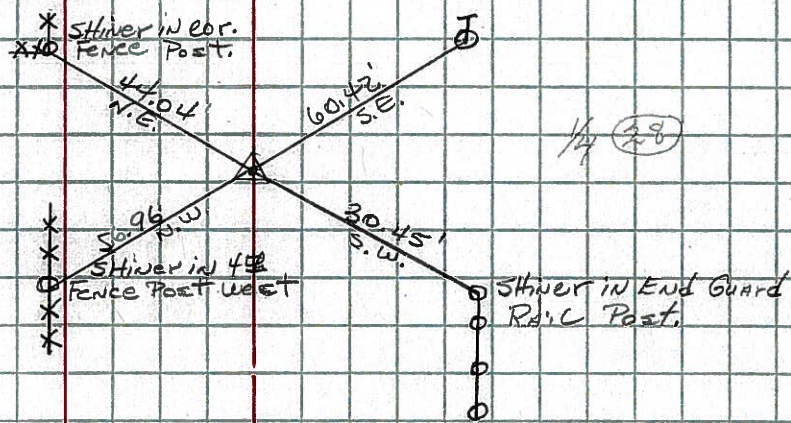
(Stakes in
in Fence
North Side
of Road.)



P.I. STA. 447+76.36
P.K. NAIL
 $\Delta = 0^\circ 18' \text{ Rt}$
#616

(31)

Hooker Rd Turn Rd #109



P.I. STA. 466+86.91
P.K. NAIL #617
 $\Delta = 0^\circ 01' \text{ Rt}$

(32)

