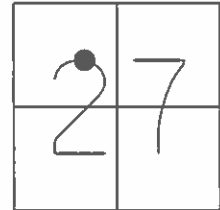


O.D.O.T. DISTRICT 2 SURVEY OFFICE (USE ONLY)

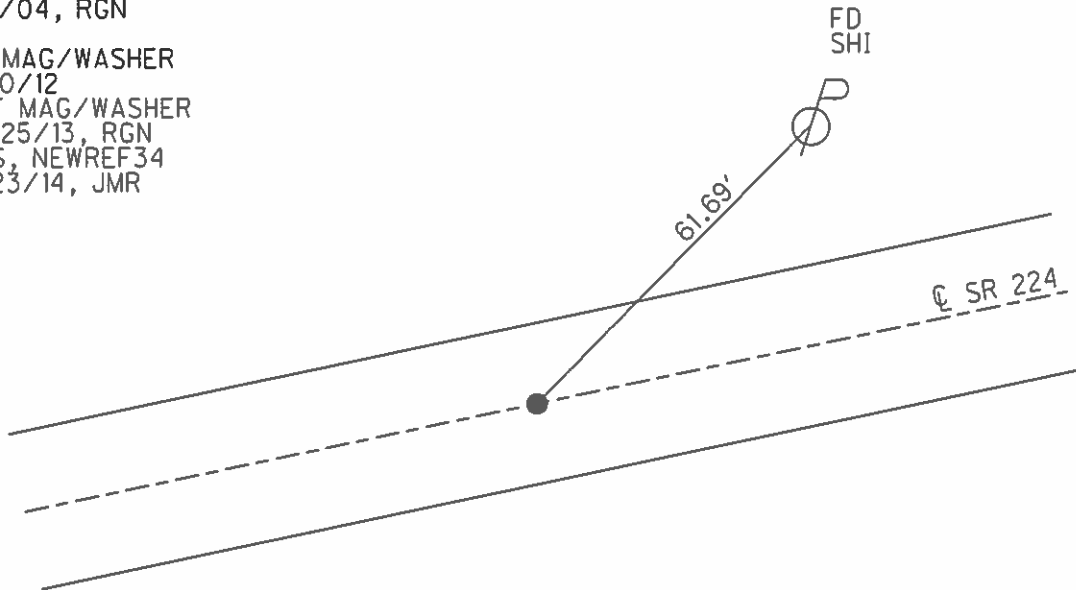
PERSONNEL _____ REFERENCE NO. 34 SHEET 36 OF 39
NOTES HOMAN DATE 6/7/13 ROUTE SR 224
H.C. HOMAN WEATHER CLOUDY COUNTY SENECA
R.C. ROUSOS TEMP. 60° TOWNSHIP LOUDON
SECTION 27
T 2 N R 14 E

TYPE MONUMENT MAG NAIL
ON SURFACE - ~~BELOW~~ ON _____
LEFT - ℄ PAV'T - ~~RIGHT~~ 1.0'
13.0' TO RT EDGE PAVEMENT
S.L.M. 503+90
Grid: Northing: 525204.512 Easting: 1764252.475



RECORD: P.I.
 $\Delta = 0^{\circ}39' RT$
P.K./WASHER
5/20/04, DCH
SET MAG/WASHER
7/1/04, RGN

FD MAG/WASHER
2/10/12
SET MAG/WASHER
10/25/13, RGN
GPS, NEWREF34
7/23/14, JMR



O.D.O.T. DISTRICT 2 SURVEY OFFICE

PERSONNEL

REFERENCE NO. 34

SHEET 10 OF 26

NOTES NUHFER

DATE 05-20-04

ROUTE US 224

H.C. HUSS

WEATHER SUNNY

COUNTY SENECA

R.C. HOMAN

TEMP. 75°

TOWNSHIP HOPEWELL

SECTION 27

T 2 N R 14 E

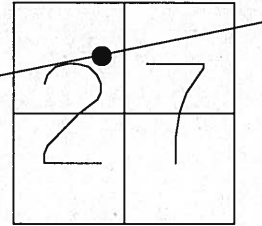
TYPE MONUMENT PK & WASHER

ON SURFACE - ~~BELOW~~ ON

LEFT - ~~C PAVT - RIGHT~~ 1' LT.

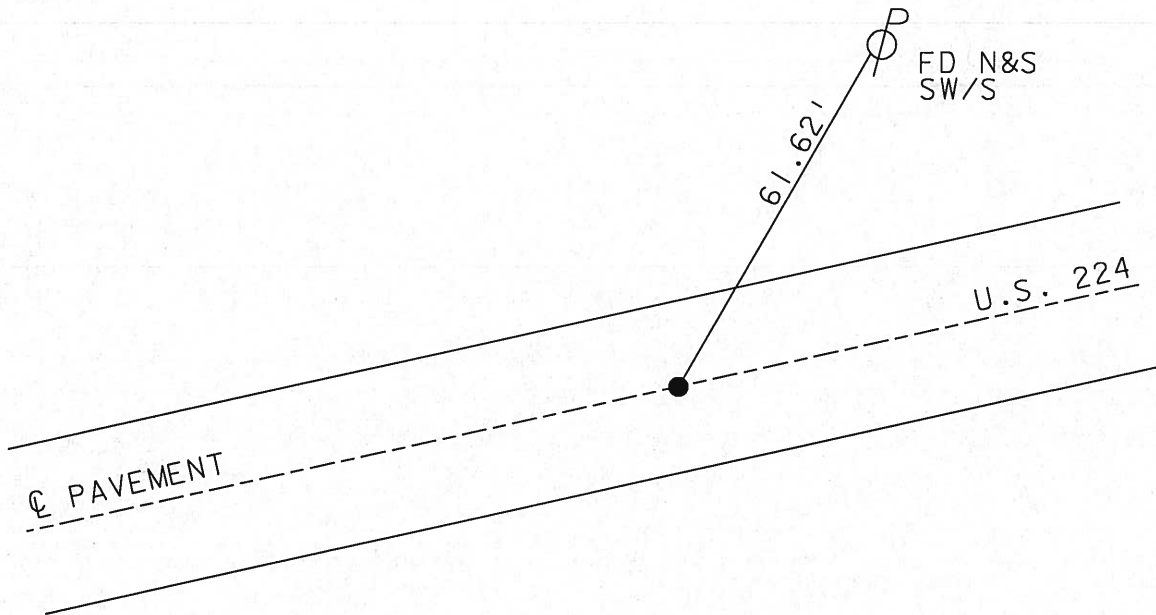
13.0' TO RT. EDGE PAVEMENT

S.L.M. 505+06



P. I. DELTA = $0^{\circ}39'$ RT. - Record

SET MAG NAIL
& WASHER
7-01-04
RGN



O.D.O.T. DISTRICT 2 SURVEY OFFICE

PERSONNEL _____

REFERENCE NO. 34

SHEET 7 OF 10

NOTES Barbour

H.C. _____

DATE 9/4/91

ROUTE 224

R.C. Geyman

WEATHER SUNNY

COUNTY Sen.

TEMP. 75°

TOWNSHIP Hopewell

SECTION 27

T2 N R 14 E

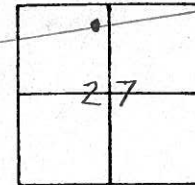
TYPE MONUMENT P.K. + Washer

~~ON SURFACE~~ - BELOW P.K. Washer

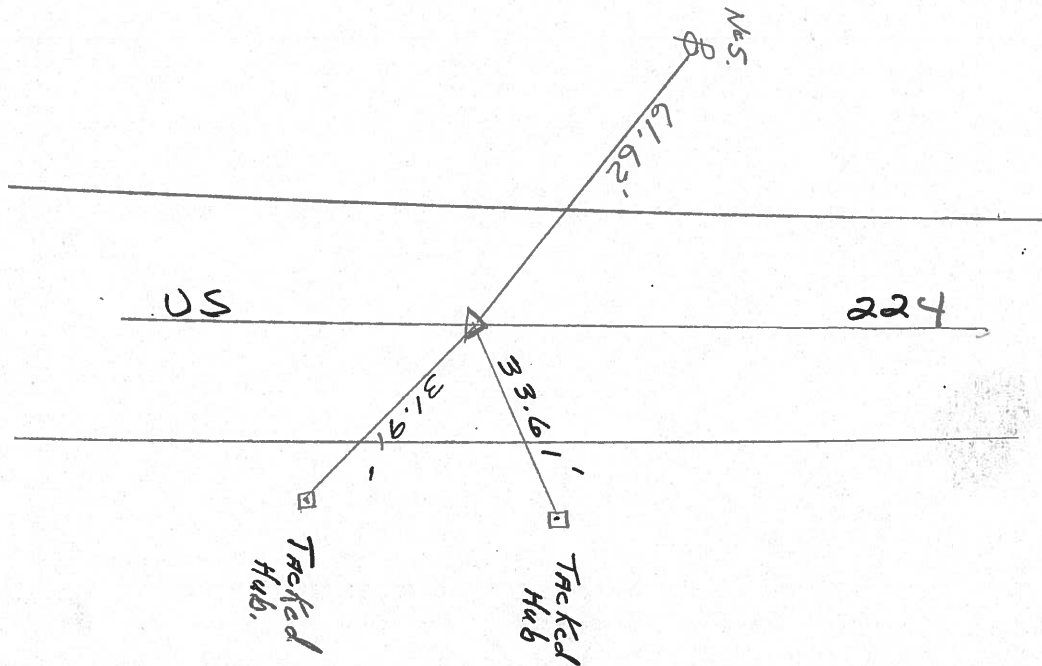
LEFT-~~C~~ PAV'T. - ~~RIGHT~~ 1'

TO EDGE PAVEMENT

S.L.M. 505+03

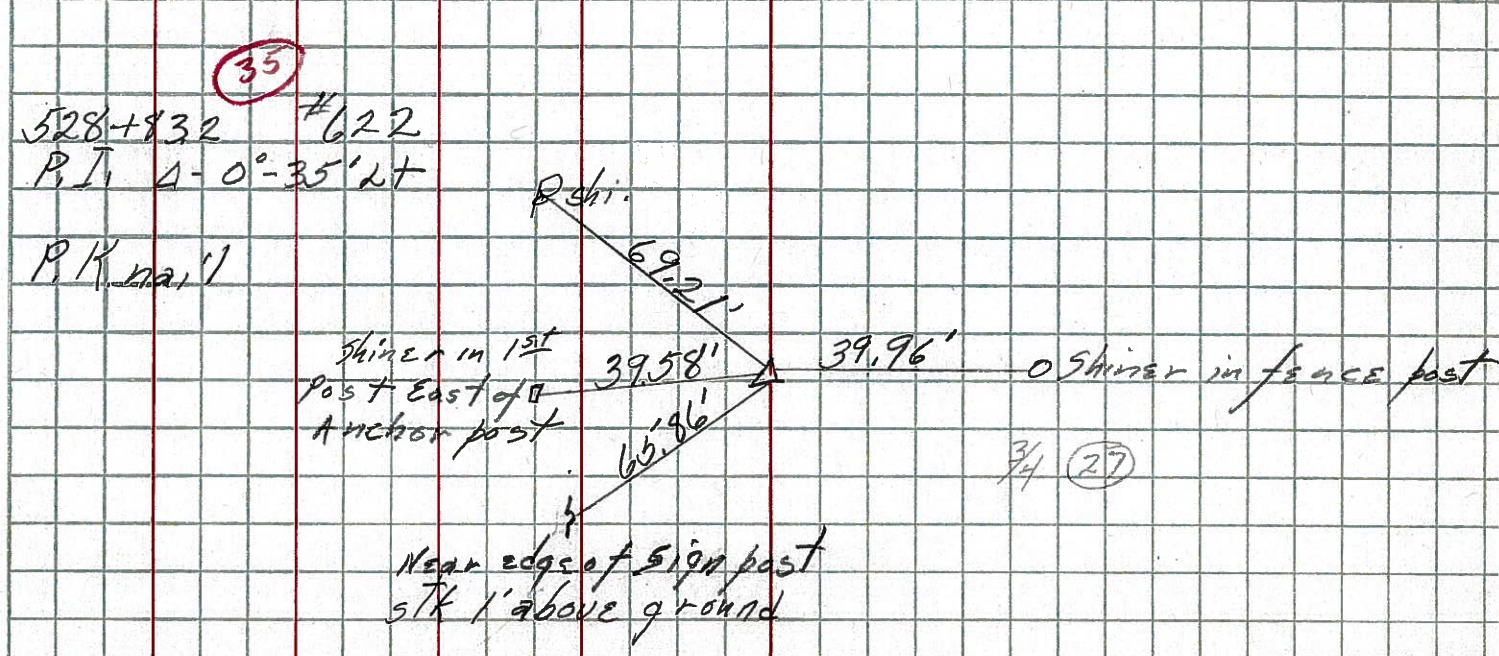
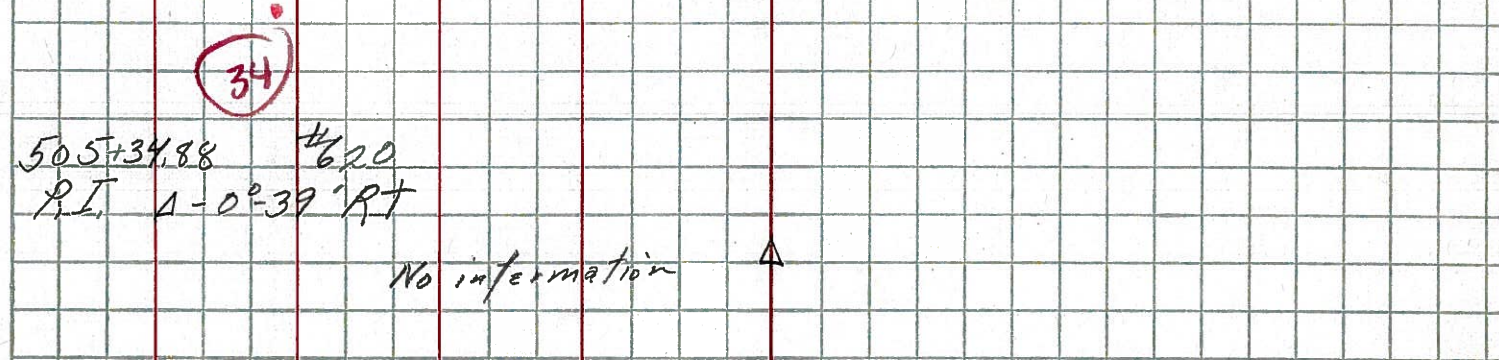
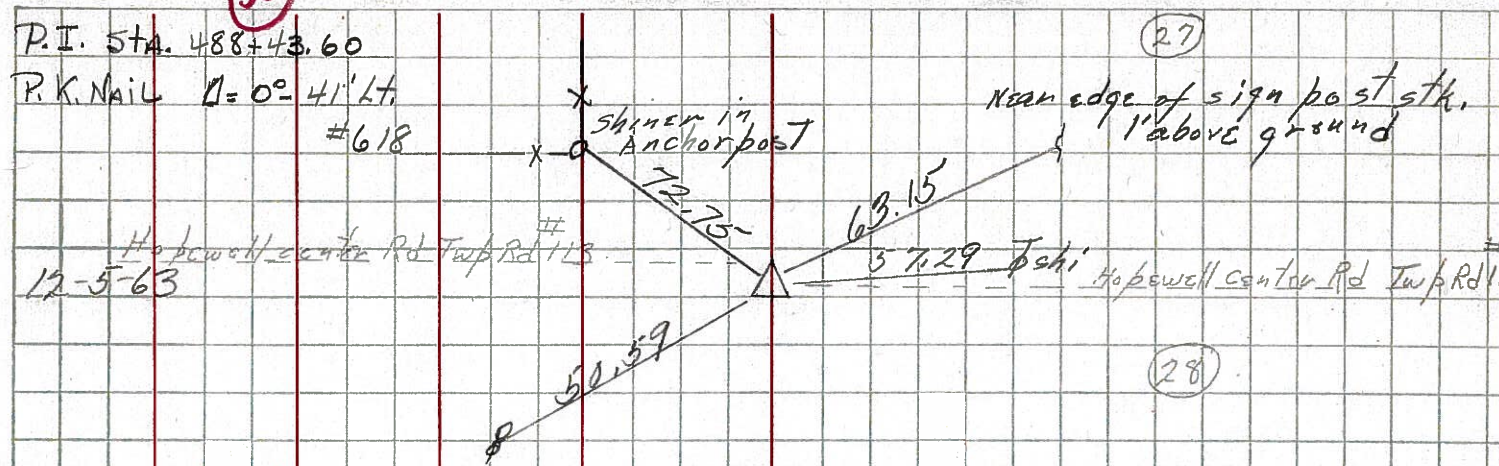


PI. $\Delta = 0^{\circ} 39' RT.$



PERSONNEL TITLE PERSONNEL TITLE COUNTY Seneca DATE 12-9-63
 E. Krabill _____
 J. Kowaleski _____
 D. Brooks _____
 S. R. 224 WEATHER _____
 SEC. _____ TEMP. _____

DESCRIPTION (33) LEFT CENTER LINE RIGHT JOB NO. _____



12-9-63