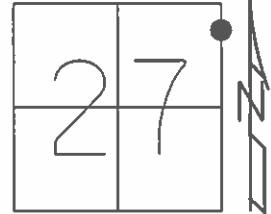


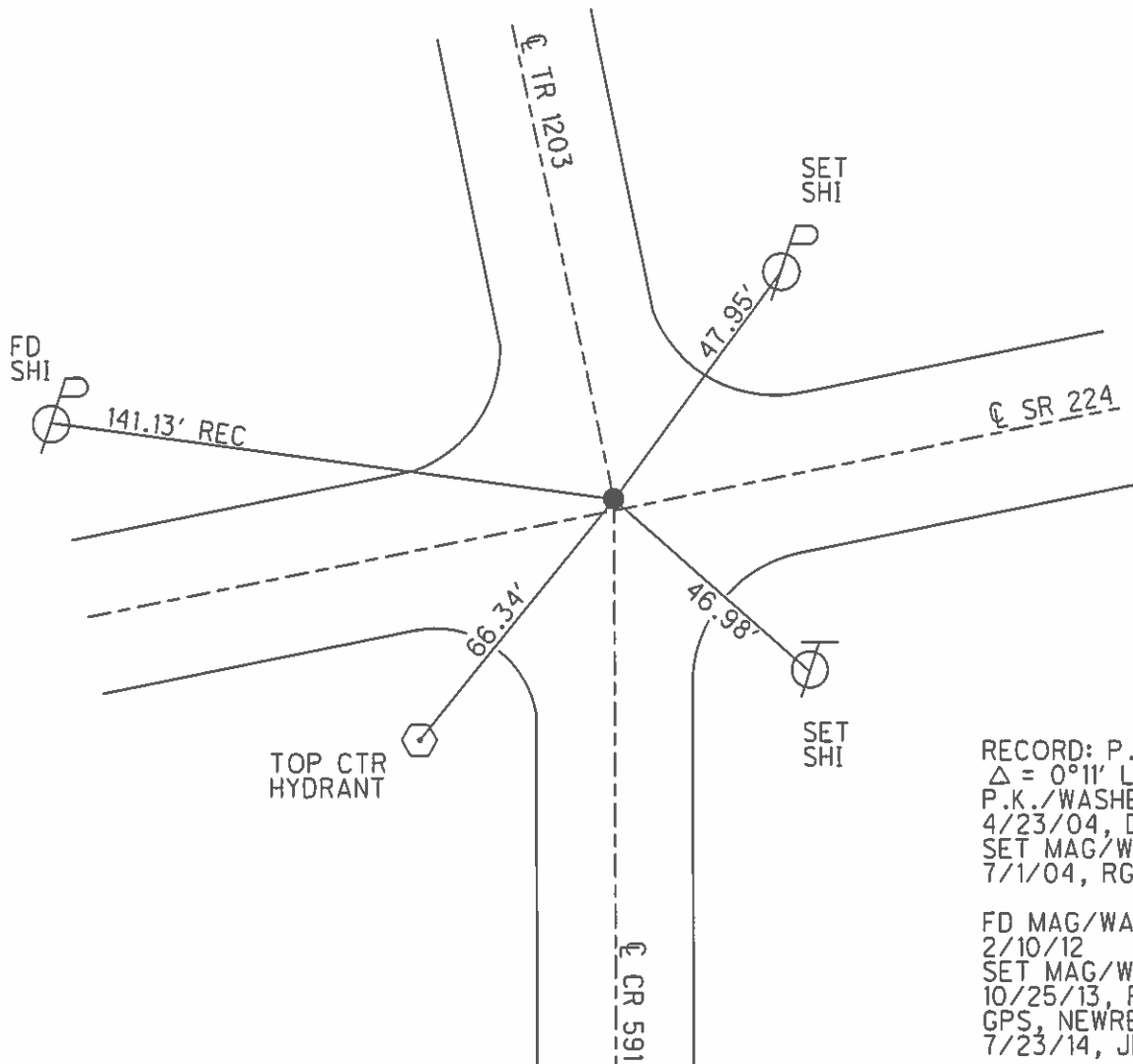
O.D.O.T. DISTRICT 2 SURVEY OFFICE (USE ONLY)

PERSONNEL _____ REFERENCE NO. 36 SHEET 38 OF 39
 NOTES HOMAN DATE 6/7/13 ROUTE SR 224
 H.C. HOMAN WEATHER CLOUDY COUNTY SENECA
 R.C. ROUSOS TEMP. 60° TOWNSHIP HOPEWELL
 _____ SECTION 27
 _____ T 2 N R 14 E

TYPE MONUMENT MAG/WASHER
 ON SURFACE - ~~BELOW~~ ON _____
 LEFT - ☉ PAV'T - ~~RIGHT~~ 1.0'
11.5' TO LT EDGE PAVEMENT
 S.L.M. 540+67.2



Grid: Northing: 525863.973 Easting: 1767828.583



RECORD: P.I.
 $\Delta = 0^{\circ}11'$ LT
 P.K./WASHER
 4/23/04, DCH
 SET MAG/WASHER
 7/1/04, RGN
 FD MAG/WASHER
 2/10/12
 SET MAG/WASHER
 10/25/13, RGN
 GPS, NEWREF36
 7/23/14, JMR

O.D.O.T. DISTRICT 2 SURVEY OFFICE

PERSONNEL

REFERENCE NO. 36

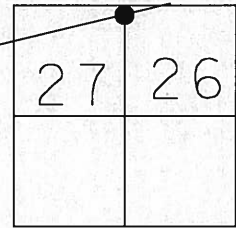
SHEET 12 OF 26

NOTES _____
 H.C. HUSS
 H.C. HOOKE
 R.C. HOMAN

DATE 04-23-04
 WEATHER CLOUDY
 TEMP. 46°

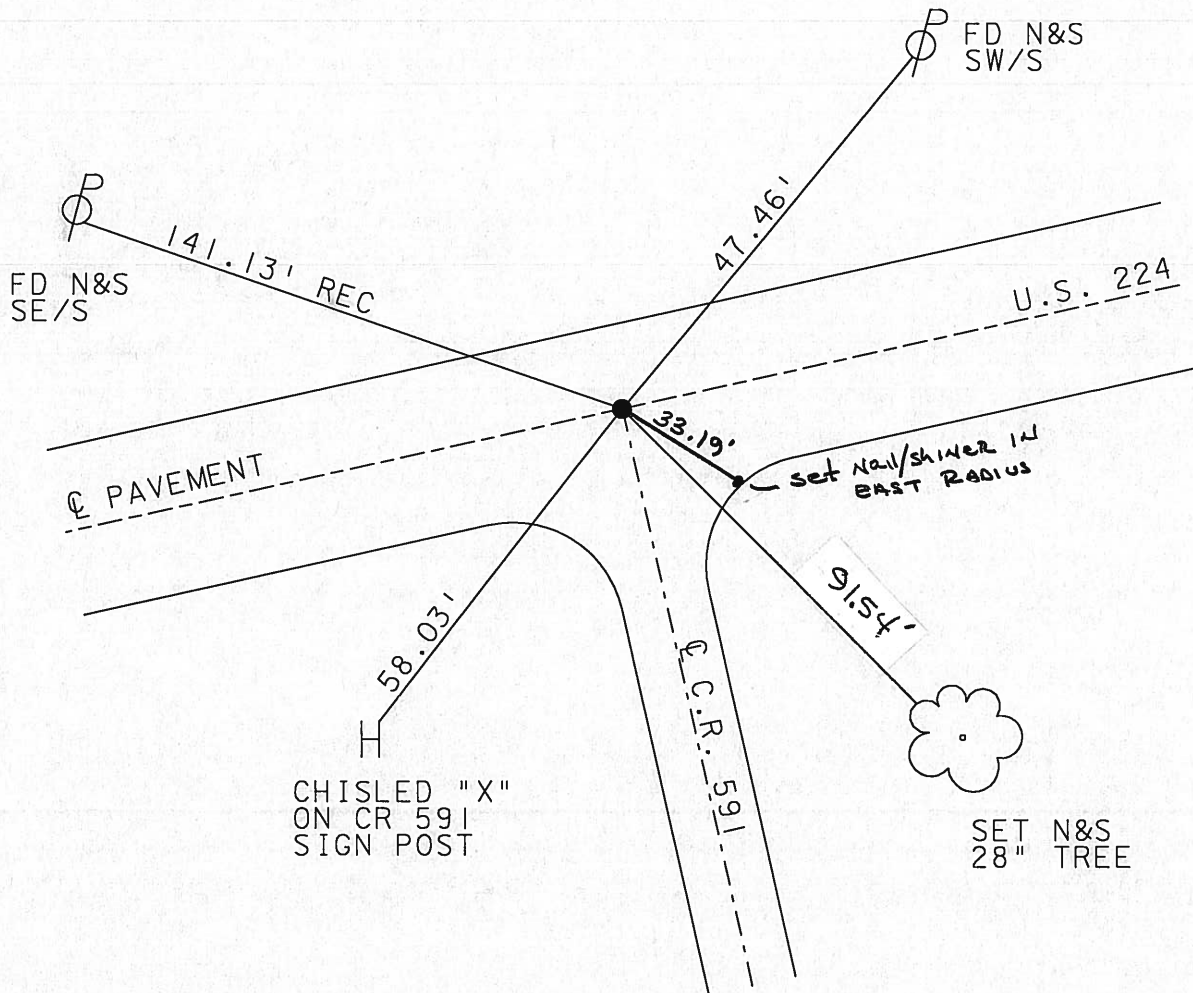
ROUTE US 224
 COUNTY SENECA
 TOWNSHIP HOPEWELL
 SECTION 27
T 2 N R 14 E

TYPE MONUMENT PK & WASHER
 ON SURFACE - BELOW ON _____
 LEFT - C PAVT - RIGHT 1' LT
11.5' TO LT EDGE PAVEMENT
 S.L.M. 541#83



P.I. DELTA=0° 11' LT. -Record

SET MAG NAIL & WASHER
 7-01-04
 RGN



O.D.O.T. DISTRICT 2 SURVEY OFFICE

PERSONNEL _____

REFERENCE NO. 36

SHEET 9 OF 10

NOTES Barbour

H.C. _____

DATE 9/4/91

ROUTE 224

R.C. Guyman

WEATHER SUNNY

COUNTY Sen.

TEMP. 75°

TOWNSHIP Hopewell

SECTION 27-26

T 2 N R 14 E

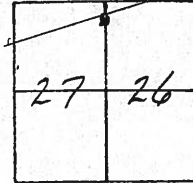
TYPE MONUMENT P.K. + Washer

~~ON SURFACE~~ - BELOW P.K.

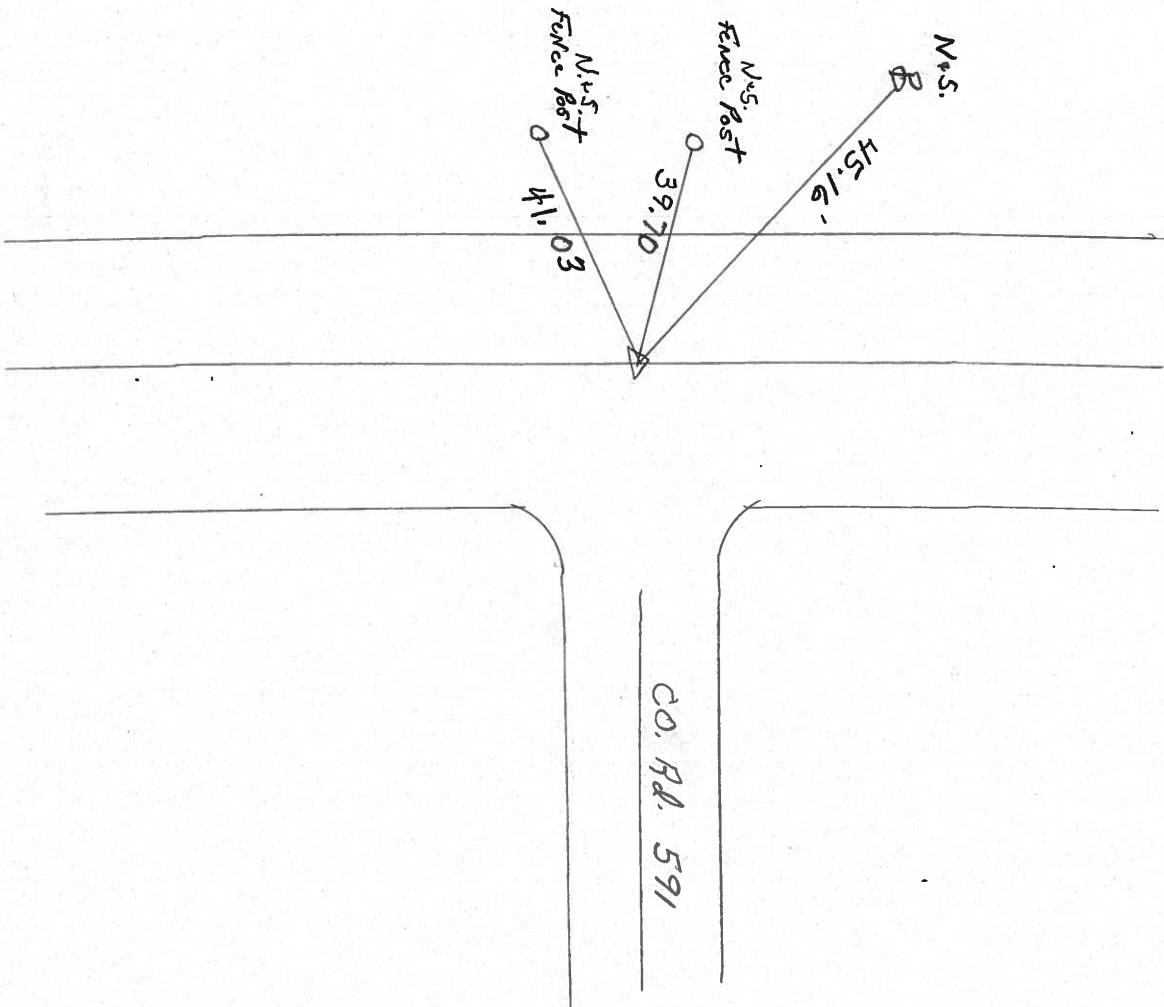
~~LEFT - & PAV'T. - RIGHT~~

TO _____ EDGE PAVEMENT

S.L.M. 541 + 83



PI. $\Delta = 0^{\circ} 11' \text{ LT.}$



OD.O.T. DISTRICT 2 SURVEY OFFICE

Sht. 1 of 8

County Seneca - S.R. # 224

Date 12/13/79

Township Hopewell

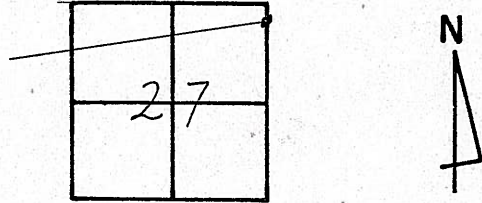
Weather overcast

Section 27

Temp. 31°

T 2 N, R 14 E

Personnel Cronin
Ripple
Schneider
Mosser
Barbour



36



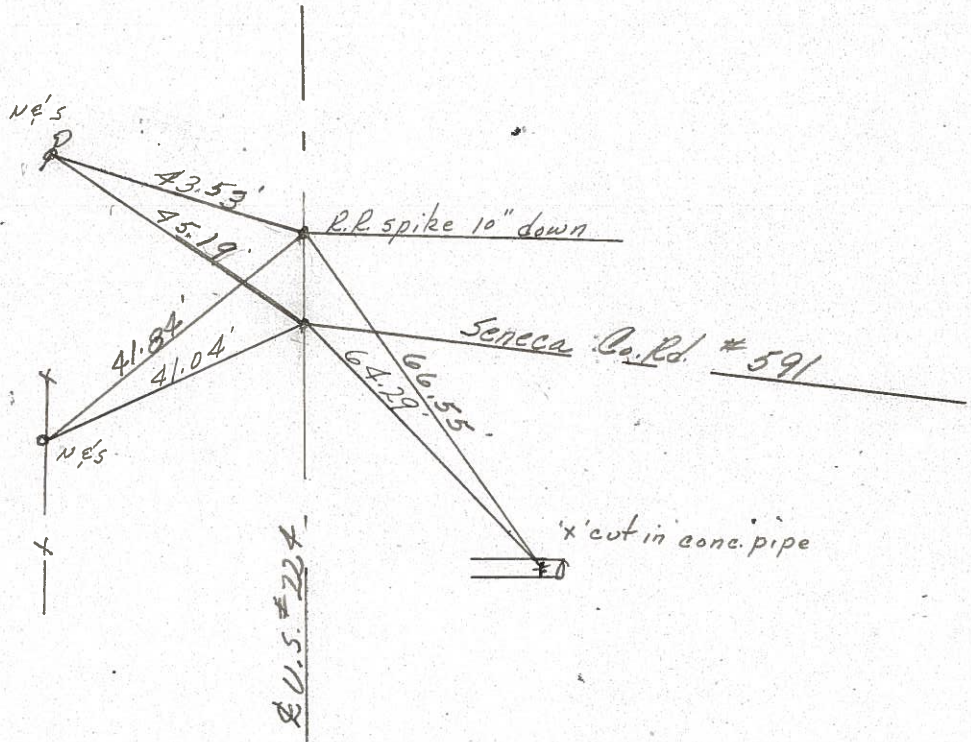
P.K. & washer on surface

2-42.54 Bk =

2-43.73 Ahd

0-46.05

P.K. & washer on surface



PERSONNEL	TITLE	PERSONNEL	TITLE

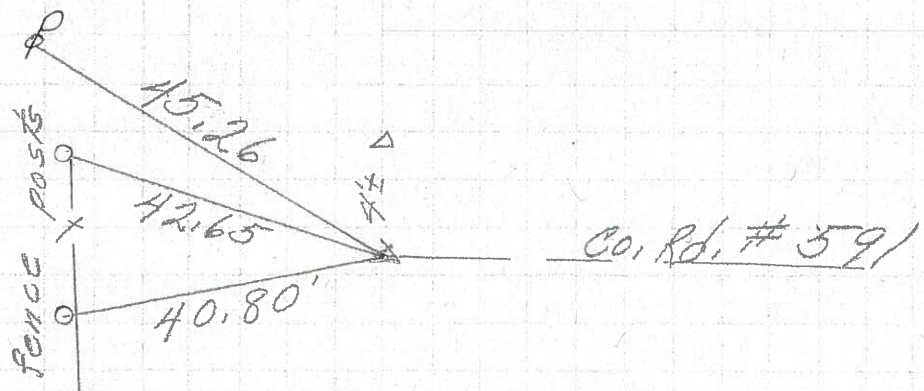
COUNTY Seneca DATE 3-29-71
 S. R. 224 WEATHER Cloudy
 SEC. 0.00 TEMP. 45°

DESCRIPTION Hancock Co. Line to Tiffin JOB NO. _____

LEFT CENTER LINE RIGHT

(36)

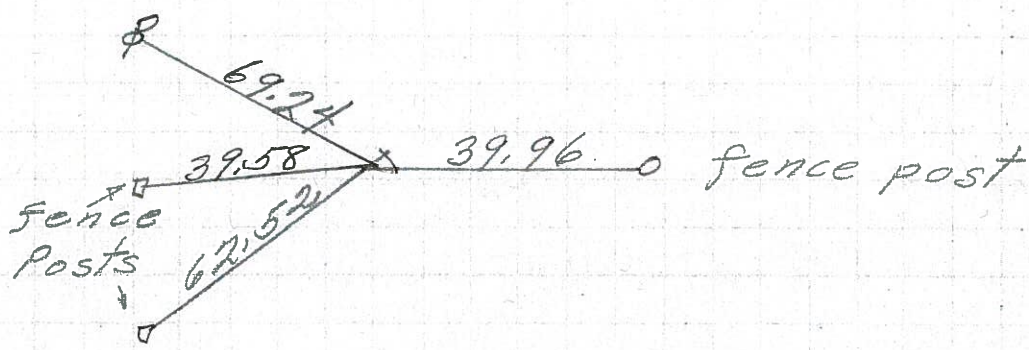
P.I.
 541+91.15
 $\Delta = 0^{\circ} 11' Lt.$
 P.K. Nail



8581

(35)

P.I.
 528+83.20
 $\Delta = 0^{\circ} 35' Lt.$
 P.K. Nail



8580

P.I.
 505+34.88
 $\Delta = 0^{\circ} 39' Rt.$

Δ Gone

8579

PERSONNEL	TITLE	PERSONNEL	TITLE	COUNTY	DATE
E. Krabill				Sauvee	
T. Kowalski				S. R. 224	WEATHER
D. Brooks				SEC.	TEMP.

DESCRIPTION	LEFT	CENTER LINE	RIGHT	JOB NO.
-------------	------	-------------	-------	---------

