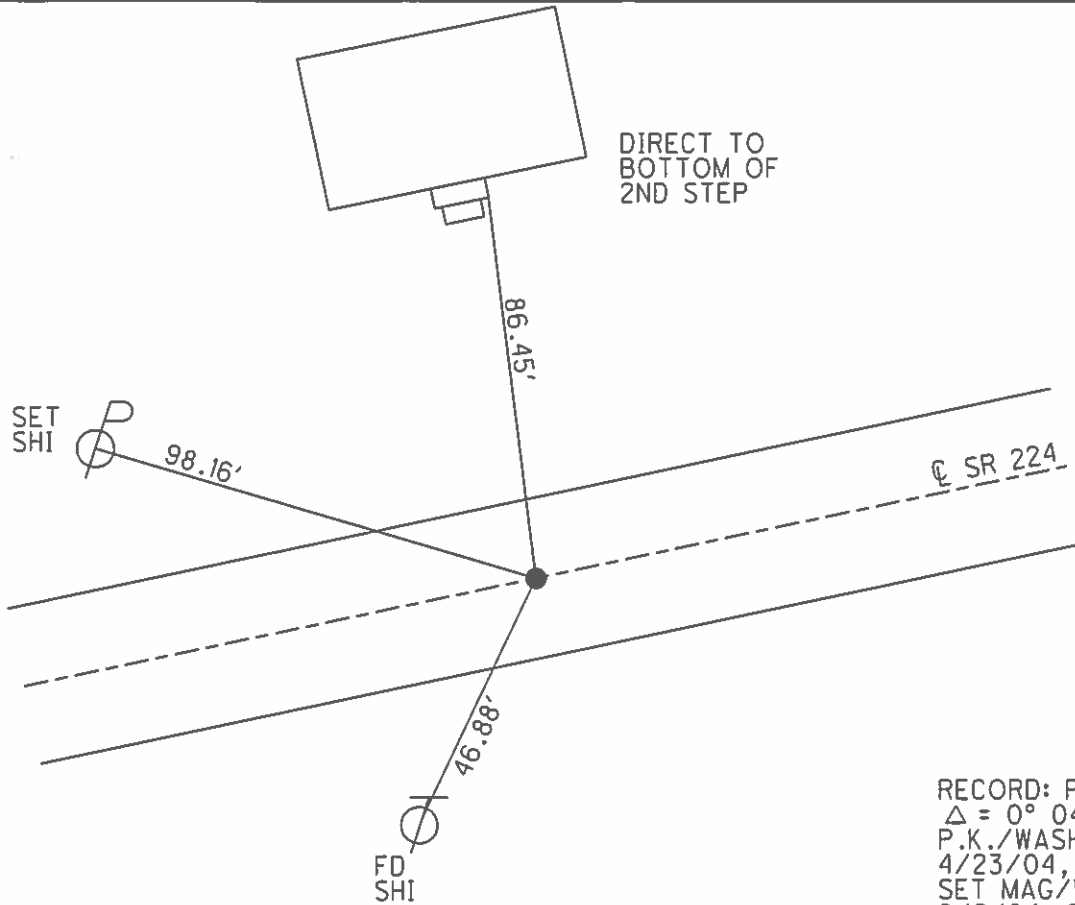
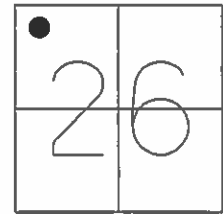


O.D.O.T. DISTRICT 2 SURVEY OFFICE (USE ONLY)

PERSONNEL _____ REFERENCE NO. 36 A SHEET 39 OF 39
 NOTES HOMAN DATE 6/7/13 ROUTE SR 224
 H.C. HOMAN WEATHER CLOUDY COUNTY SENECA
 R.C. ROUSOS TEMP. 60° TOWNSHIP HOPEWELL
 _____ SECTION 26
 _____ T 2 N R 14 E

TYPE MONUMENT MAG/WASHER
 ON SURFACE - ~~BELOW~~ ON
 LEFT - ☉ PAV'T - RIGHT ON
12' TO RT EDGE PAVEMENT
 S.L.M. 550+14.2
 Grid: Northing: 526042.910 Easting: 1768770.974



RECORD: P.I.
 $\Delta = 0^\circ 04' \text{ RT}$
 P.K./WASHER
 4/23/04, DCH
 SET MAG/WASHER
 8/6/04, SAH

FD MAG/WASHER
 2/10/12
 SET MAG/WASHER
 10/25/13, RGN
 GPS, NEWREF A36
 7/23/14, JMR

O.D.O.T. DISTRICT 2 SURVEY OFFICE

PERSONNEL

REFERENCE NO. 36-A

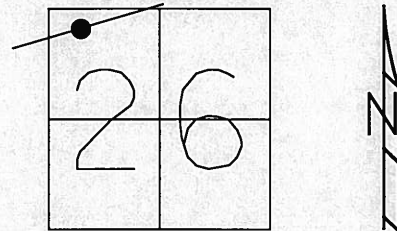
SHEET 13 OF 26

NOTES _____
 H.C. HUSS
 R.C. HOOKE
HOMAN
ARMS

DATE 04-23-04
 WEATHER CLOUDY
 TEMP. 46°

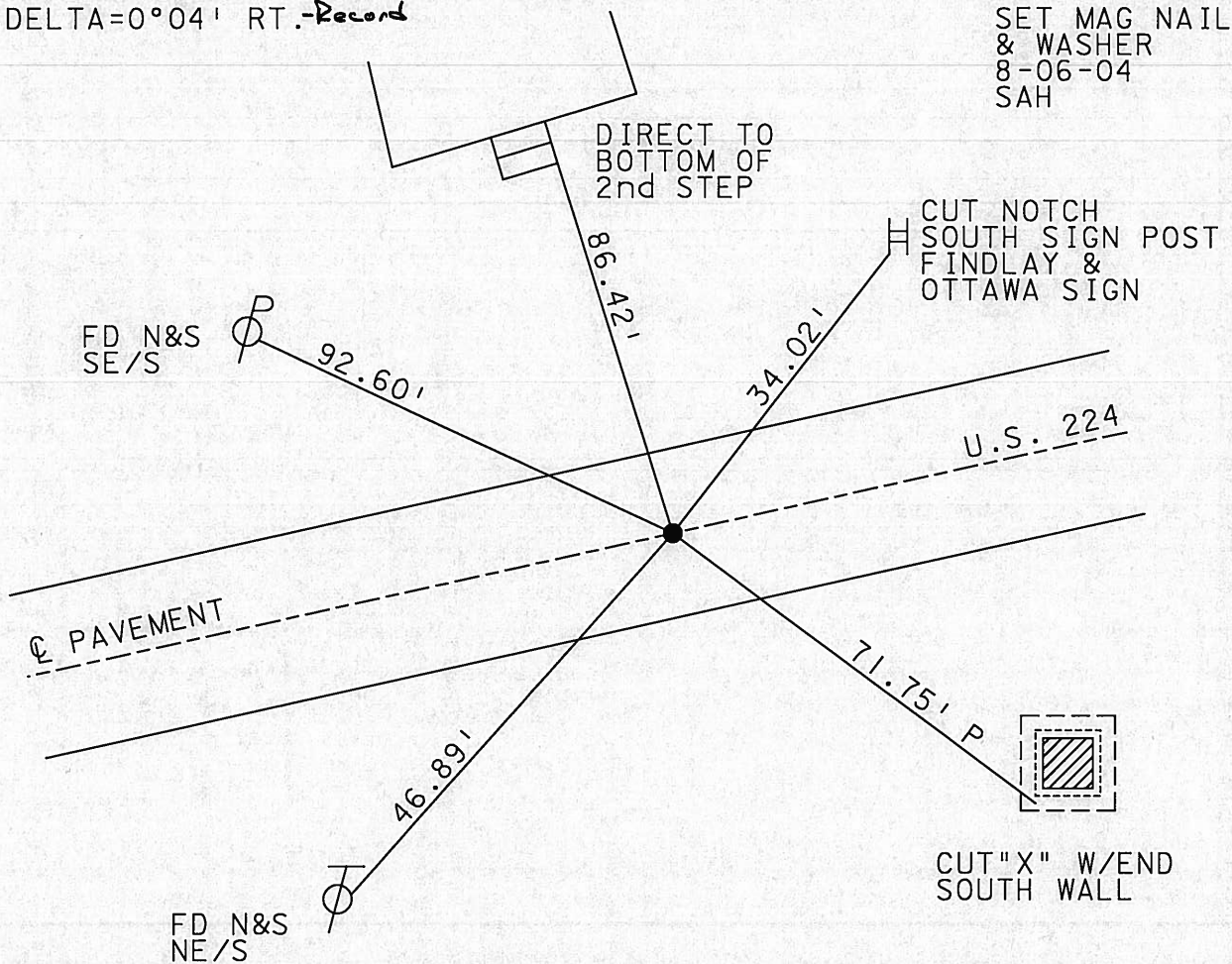
ROUTE US 224
 COUNTY SENECA
 TOWNSHIP HOPEWELL
 SECTION 26
T 2 N R 14 E

TYPE MONUMENT PK & WASHER
~~ON SURFACE~~ - ~~BELOW~~ 2.5"
~~LEFT - C~~ PAV'T - ~~RIGHT~~ ON
12' TO RT EDGE PAVEMENT
 S.L.M. 551+30



P. I. DELTA=0°04' RT. Record

SET MAG NAIL
 & WASHER
 8-06-04
 SAH



O.D.O.T. DISTRICT 2 SURVEY OFFICE

Sht. 2 of 8

County Seneca Route #224

Date 12/13/79

Township Hopewell

Weather overcast

Section 26

Temp. 31°

T2N, R14E

Personnel Cronin

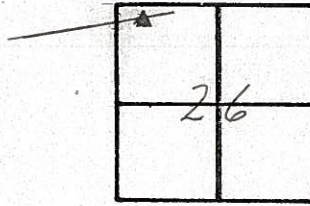
Ripple

Schneider

Mosser

Barbour

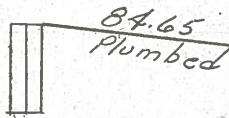
36-A



~~36~~

P.I. Δ = 00° 04' Rt
8+92.50
P.K. E' washer on surface

1st step to house #2833



92.60

46.94

U.S. # 2242