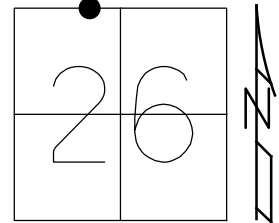


O.D.O.T. DISTRICT 2 SURVEY OFFICE (USE ONLY)

PERSONNEL \_\_\_\_\_ REFERENCE NO. 37 SHEET 1 OF 12  
 NOTES ASTON DATE 9/14/23 ROUTE US 224  
 H.C. NIESE WEATHER SUNNY COUNTY SENECA  
 R.C. ASTON TEMP. 70° TOWNSHIP HOPEWELL  
 DWG BY RHOADES PID R/W SECTION 26  
 T 2 N R 14 E

TYPE MONUMENT MON BOX W/ 1" IPIN  
 ON SURFACE - ~~BELOW~~ ON  
 OFFSET ☉ PAVEMENT ON LT : RT  
- TO - EDGE PAVEMENT  
 STATION: 597+69.6

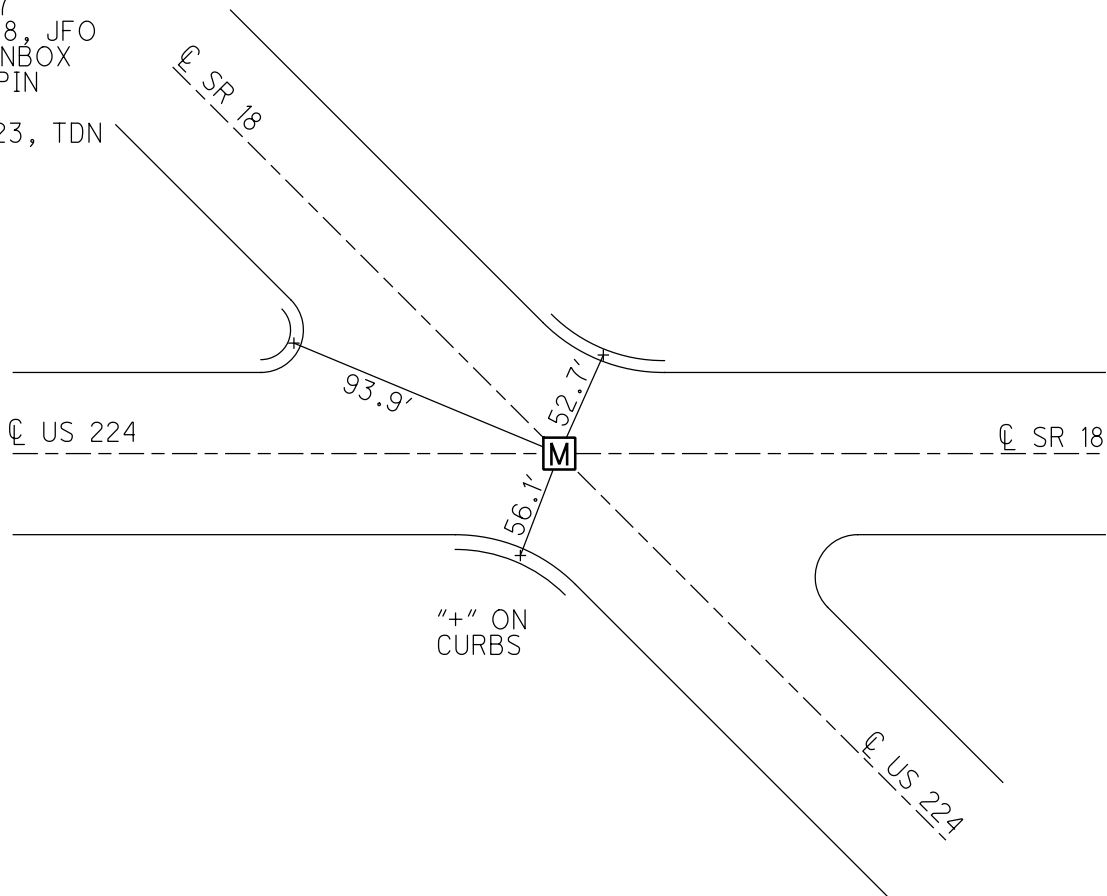


HORZ.DATUM: NAD83 (2011) GEOID: NAVD88 2018  
 GRID: NORTHING: 526252.172 EASTING: 1769858.373

RECORD: P.I.  
 FD MONBOX  
 11/5/91, CHENEY  
 FD MONBOX  
 W/ 1" IPIN  
 REF37  
 6-13-17  
 12-17-18, JFO  
 FD MONBOX  
 W/1" IPIN  
 REF37  
 9/14/23, TDN

NOTE: REF42B SR 18

SENECA LDP:  
 N: 294888.904  
 E: 144511.264



O.D.O.T. DISTRICT 2 SURVEY OFFICE (USE ONLY)

PERSONNEL

REFERENCE NO. 37

SHEET 1 OF 12

NOTES CHENEY DATE 11/5/91

H.C. RIPPLE WEATHER SUNNY

R.C. BARBOUR TEMP. 34°

GEYMAN

ROUTE US 224

COUNTY SENECA

TOWNSHIP HOPEWELL

SECTION 26

DWG BY MILLER PID 102819

T 2 N R 14 E

TYPE MONUMENT MON BOX W/ 1" IPIN

ON SURFACE - ~~BELOW~~ ON

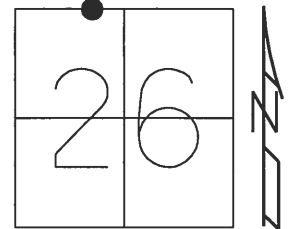
OFFSET  $\varnothing$  PAVEMENT ON LT : RT

- TO - EDGE PAVEMENT

STATION: 597+69.6

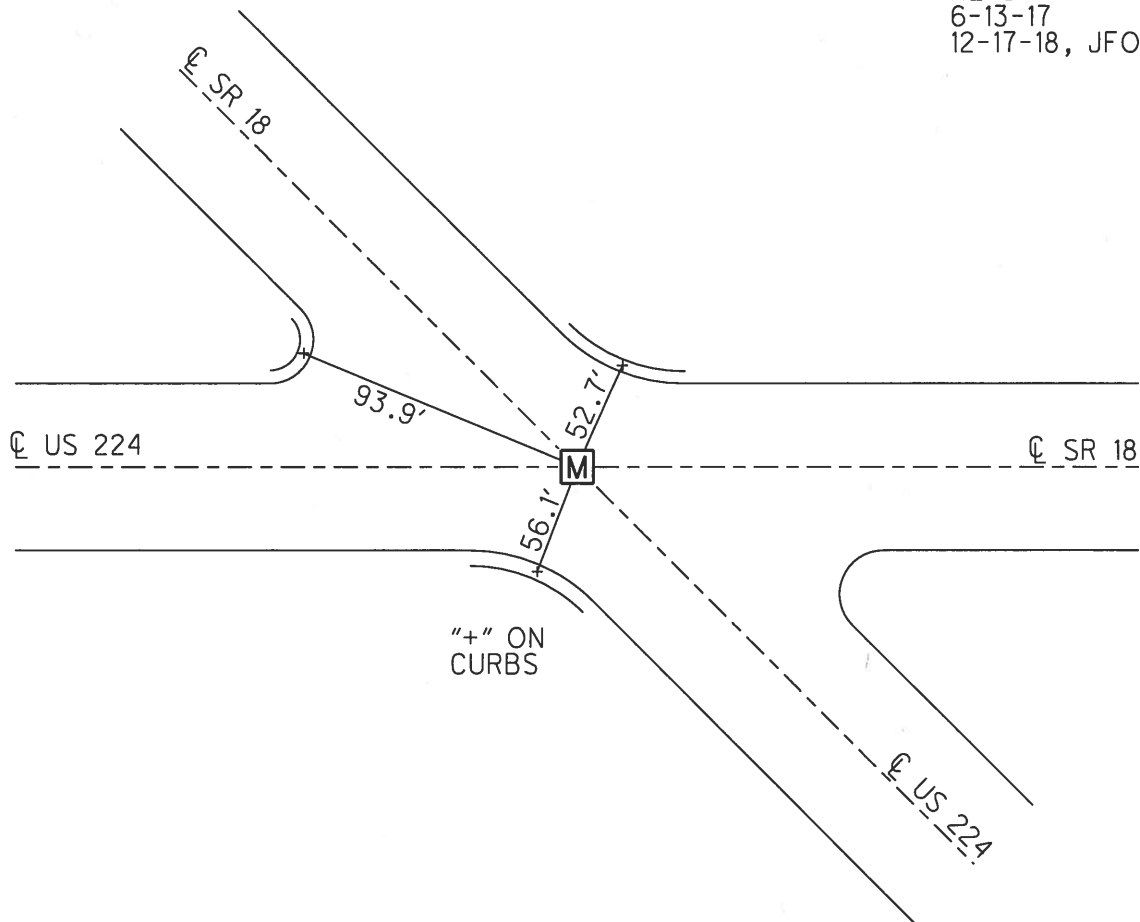
HORZ.DATUM: NAD83 (2011) GEOID: 2012A

GRID: NORTHING: 526252.172 EASTING: 1769858.373



NOTE: REF42B SR 18

RECORD: P.I.  
FD MONBOX  
11/5/91, CHENEY  
FD MONBOX  
W/ 1" IPIN  
REF 37  
6-13-17  
12-17-18, JFO



O.D.O.T. DISTRICT 2 SURVEY OFFICE

PERSONNEL

REFERENCE NO. 37

SHEET 10 OF 10

NOTES CHENEY

H.C. Ripple

R.C. BARBOUR

Geyman

DATE 11/5/91

WEATHER Cold Sunny

TEMP. 34

ROUTE 224

COUNTY Sen

TOWNSHIP Hope Well

SECTION 26

T 2 N R 14 E

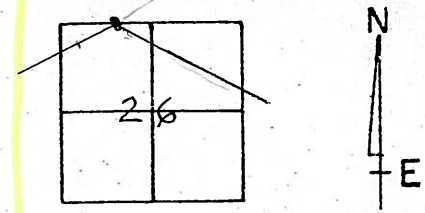
TYPE MONUMENT MCW Box

ON SURFACE - ~~BLW~~

LEFT - C PAV'T. - RIGHT

TO EDGE PAVEMENT

S.L.M.

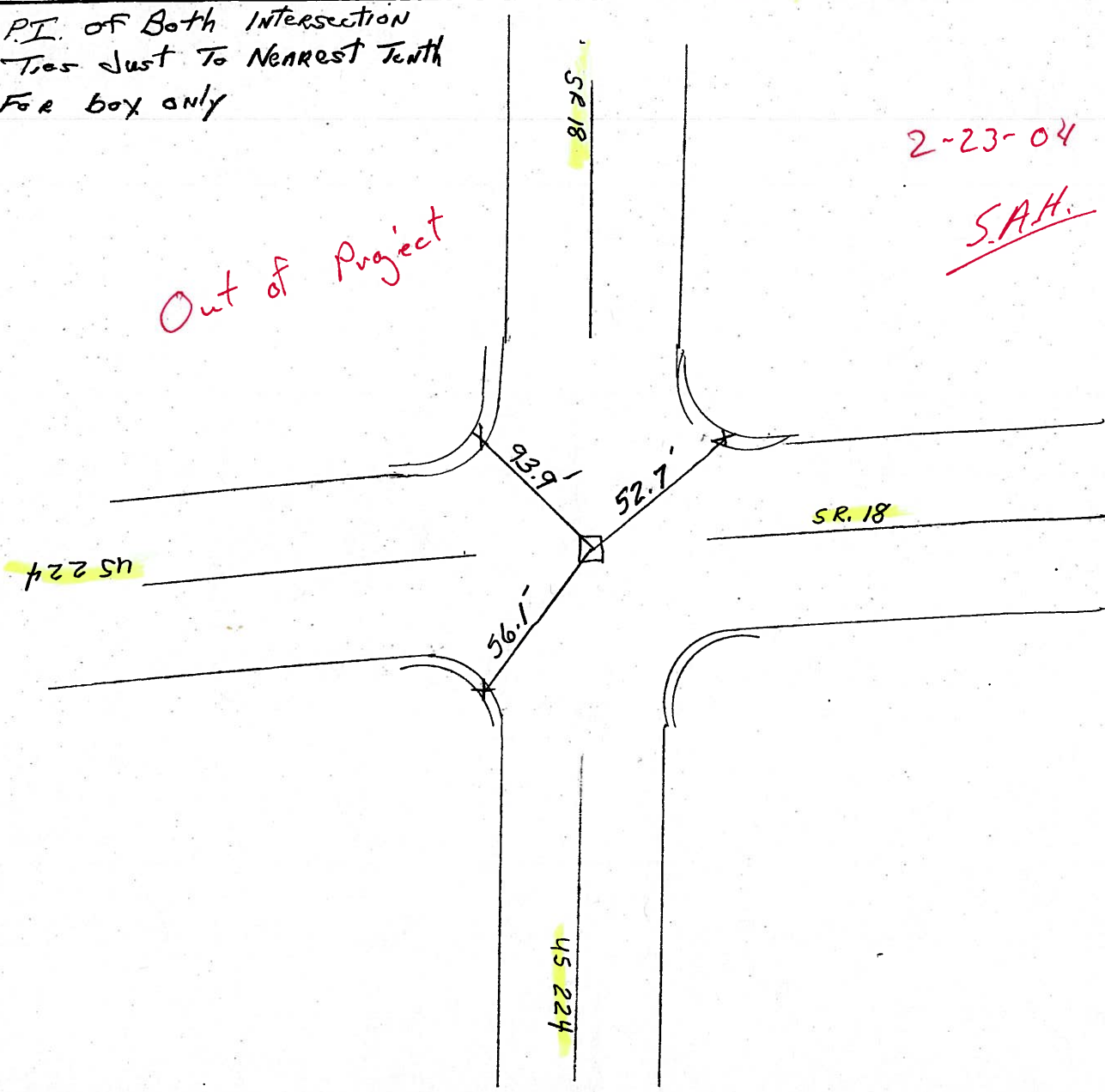


PI. of Both Intersection  
Ties Just To Nearest Tenth  
For box only

*Out of Project*

2-23-04

S.A.H.



O.D.O.T. DISTRICT 2 SURVEY OFFICE

14 of 26

PERSONNEL

REFERENCE NO. 37

SHEET 10 OF 10

NOTES Cheney

H.C. Rippl

R.C. Barbour

Geyman

DATE 11/5/91

WEATHER Cold Sunny

TEMP. 34

ROUTE 224

COUNTY Sen

TOWNSHIP Hope Well

SECTION 26

T 2 N R 14 E

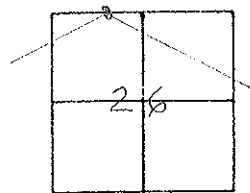
TYPE MONUMENT Box

ON SURFACE - ~~BELOW~~

LEFT- & PAV'T. - RIGHT

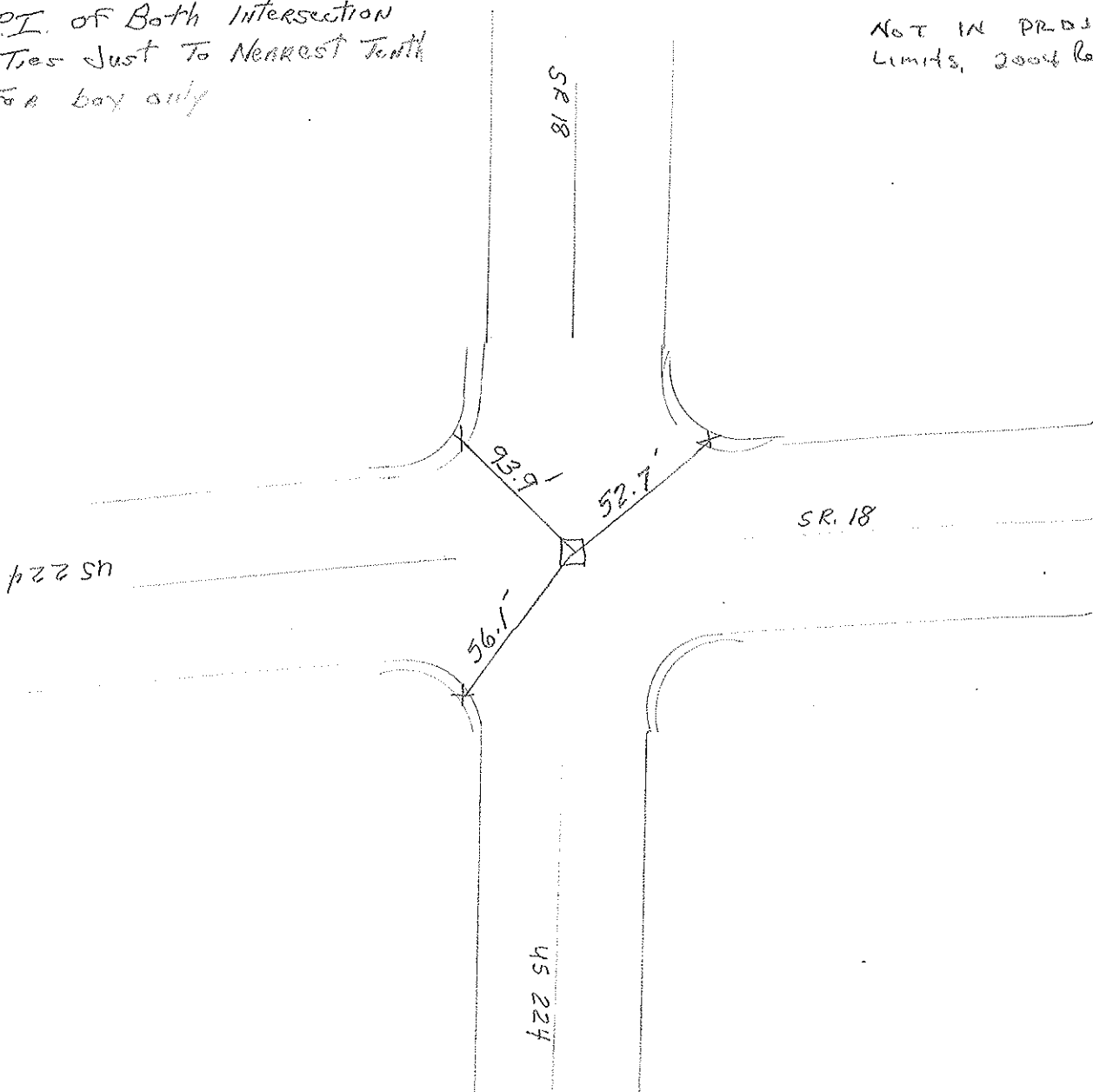
TO EDGE PAVEMENT

S.L.M.



*PI. of Both Intersection  
Ties Just To Nearest Tooth  
For box only*

*NOT IN PROJECT  
Limits, 200ft Casurface*



County Seneca - S.R. #224 & 18

Date 12/13/79

Township Hopewell

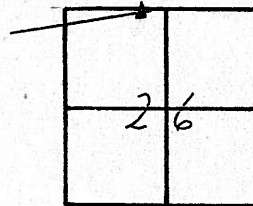
Weather overcast

Section 26

Temp. 31°

T2N, R14E

Personnel Cronin  
Ripple  
Schneider  
Messer  
Barbour



37



20+00  
P.K. & Washer on  
surface

