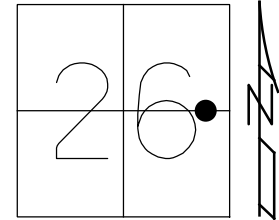


O.D.O.T. DISTRICT 2 SURVEY OFFICE (USE ONLY)

PERSONNEL _____ REFERENCE NO. 38 SHEET 2 OF 12
 NOTES ASTON DATE 9/14/23 ROUTE US 224
 H.C. NIESE WEATHER SUNNY COUNTY SENECA
 R.C. ASTON TEMP. 70° TOWNSHIP HOPEWELL
 DWG BY RHOADES PID R/W SECTION 26
 T 2 N R 14 E

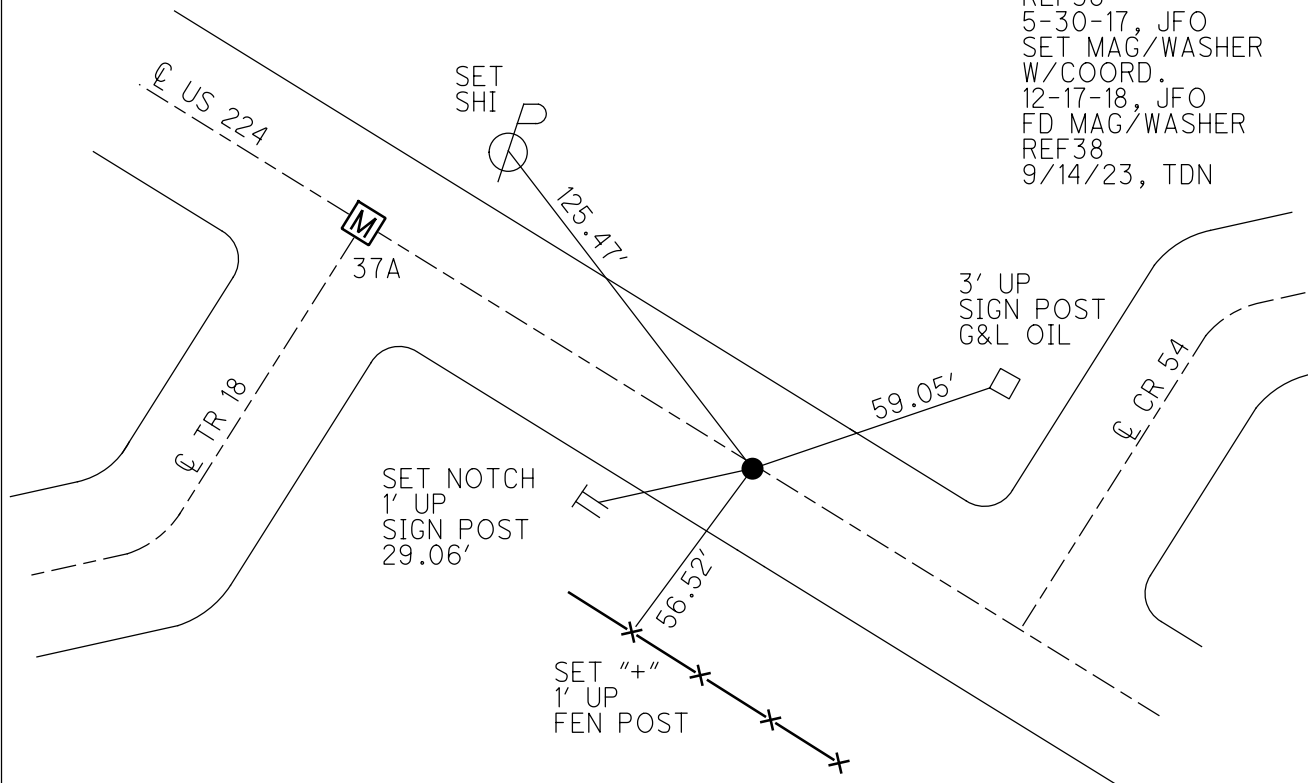
TYPE MONUMENT MAG/WASHER
 ON SURFACE - ~~BELOW~~ ON
 OFFSET 0.4' LT : RT
11.4' TO RT EDGE PAVEMENT
 STATION: 600+17



HORZ. DATUM: NAD83 (2011) GEOID: NAVD88 2018
 GRID: NORTHING: 523685.346 EASTING: 1772691.066

SENECA LDP: SENeca LDP:
 REF37A REF38
 N: 292502.160 N: 292343.101
 E: 147185.116 E: 147363.292

RECORD:
 STA. 58+22
 FD P.K./WASHER
 4-26-04, DCH
 SET MAG/WASHER
 8-17-04, MB
 FD MAG/WASHER
 REF38
 5-30-17, JFO
 SET MAG/WASHER
 W/COORD.
 12-17-18, JFO
 FD MAG/WASHER
 REF38
 9/14/23, TDN



O.D.O.T. DISTRICT 2 SURVEY OFFICE (USE ONLY)

PERSONNEL

REFERENCE NO. 38

SHEET 2 OF 12

NOTES RHOADES

DATE 5/30/17

ROUTE US 224

H.C. O'DONNELL

WEATHER CLOUDY

COUNTY SENECA

R.C. POORE

TEMP. 75°

TOWNSHIP HOPEWELL

DWG BY MILLER

PID 102819

SECTION 26

T 2 N R 14 E

TYPE MONUMENT MAG/WASHER

ON SURFACE - ~~BELOW~~ ON

OFFSET 0.4' Pavement RT

11.4' TO RT EDGE PAVEMENT

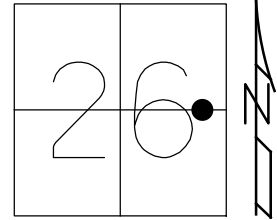
STATION: 600+17

HORZ. DATUM: NAD83 (2011)

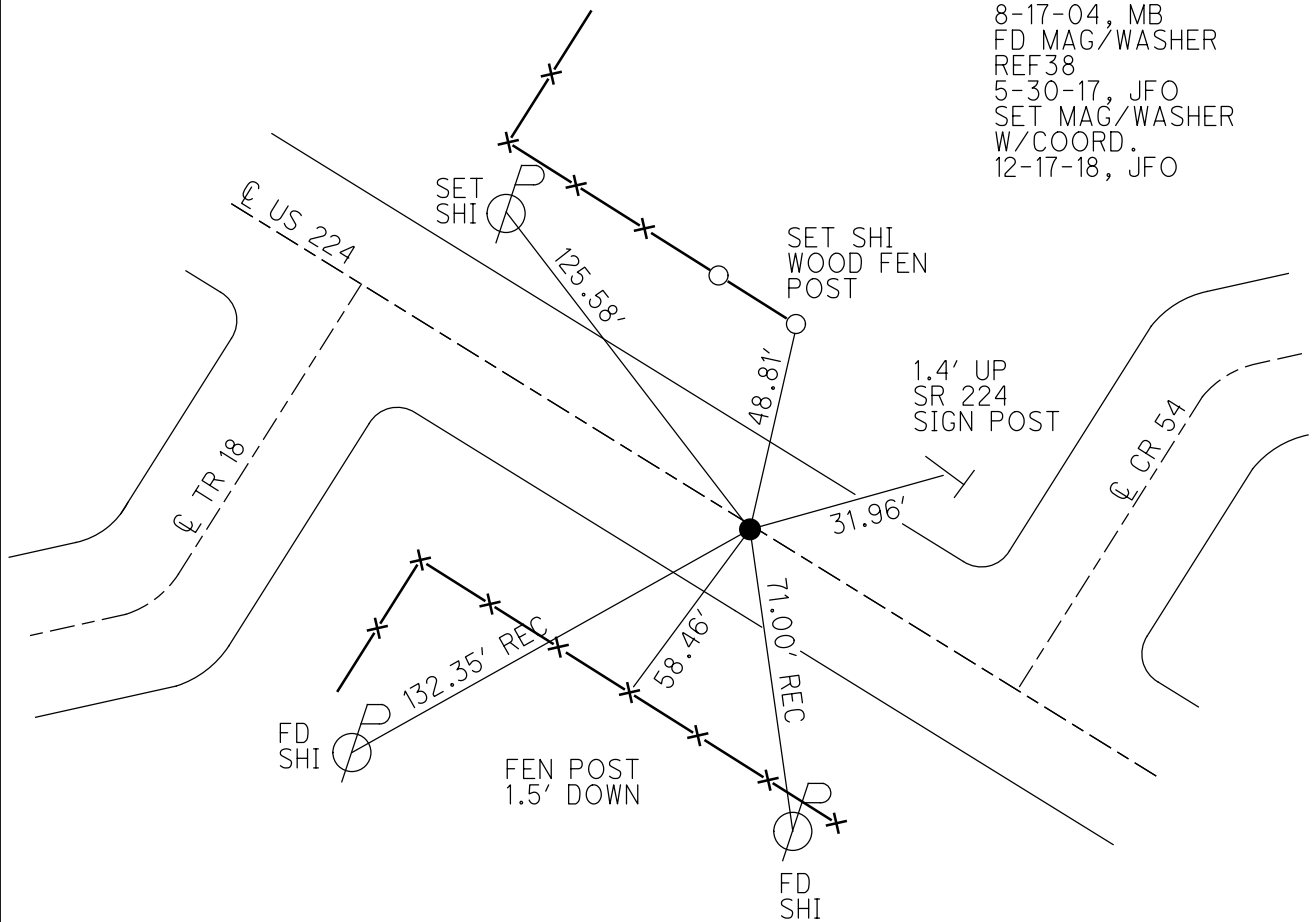
GEOID: 2012A

GRID: NORTHING: 523685.346

EASTING: 1772691.066



RECORD:
 STA. 58+22
 FD P.K./WASHER
 4-26-04, DCH
 SET MAG/WASHER
 8-17-04, MB
 FD MAG/WASHER
 REF38
 5-30-17, JFO
 SET MAG/WASHER
 W/COORD.
 12-17-18, JFO



O.D.O.T. DISTRICT 2 SURVEY OFFICE

PERSONNEL

REFERENCE NO. 38

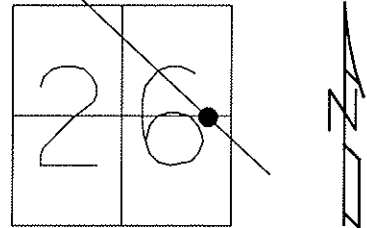
SHEET 15 OF 26

NOTES NUHFER
 H.C. HOOKER
 R.C. HOMAN
HUSS
ARMS

DATE 4-26-04
 WEATHER SUNNY
 TEMP. 50°

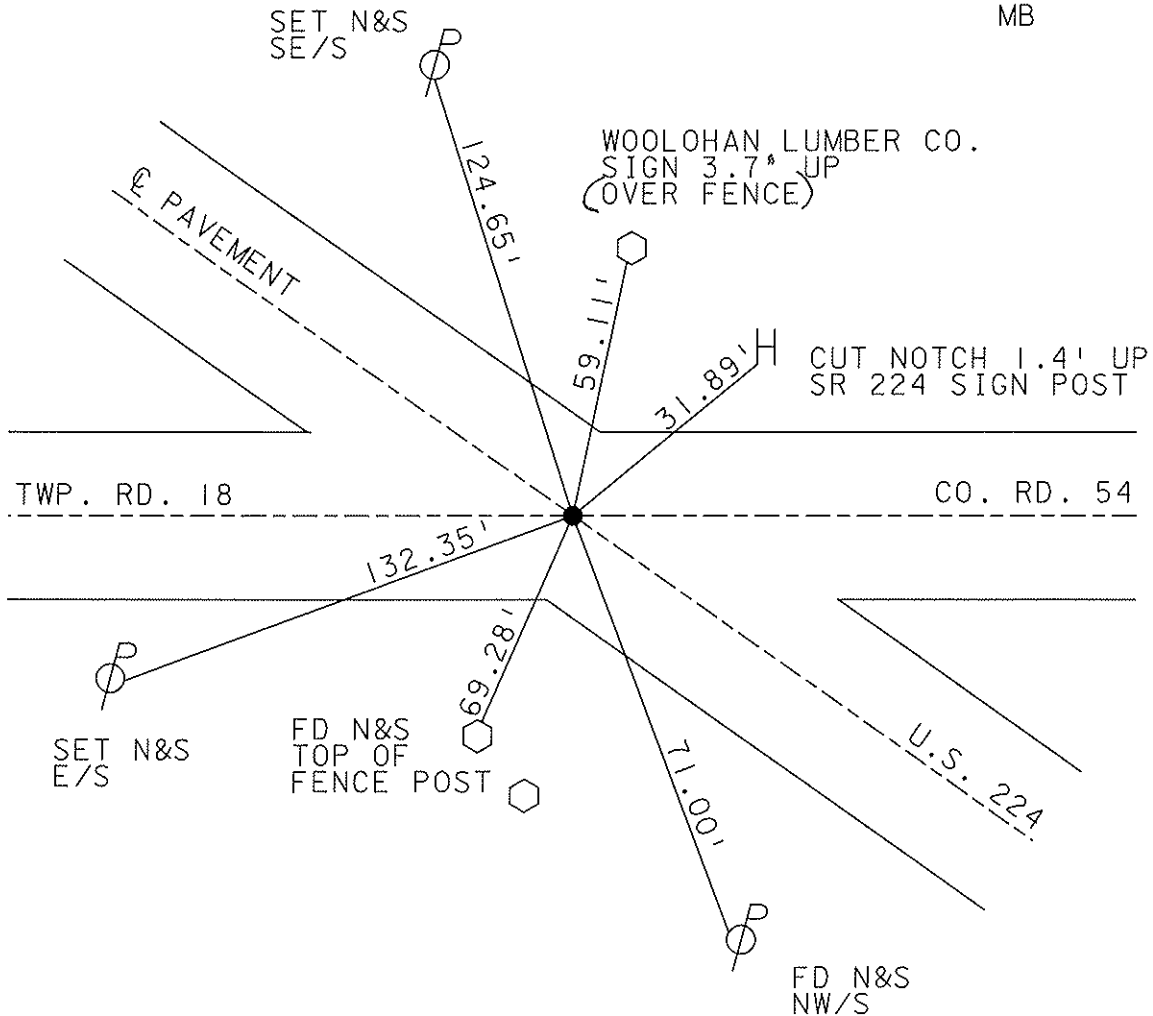
ROUTE US 224
 COUNTY SENECA
 TOWNSHIP HOPEWELL
 SECTION 26
T 2 N R 14 E

TYPE MONUMENT PK & WASHER
 ON SURFACE ~~-BELOW~~ ON
~~LEFT - C PAVT - RIGHT~~ 0.4' RT
11.4' TO RT EDGE PAVEMENT
 S.L.M. 600+17



PLAN sta. 58+22

SET MAG NAIL
 & WASHER
 8-17-04
 MB



O.D.O.T. DISTRICT 2 SURVEY OFFICE

PERSONNEL

REFERENCE NO. 38

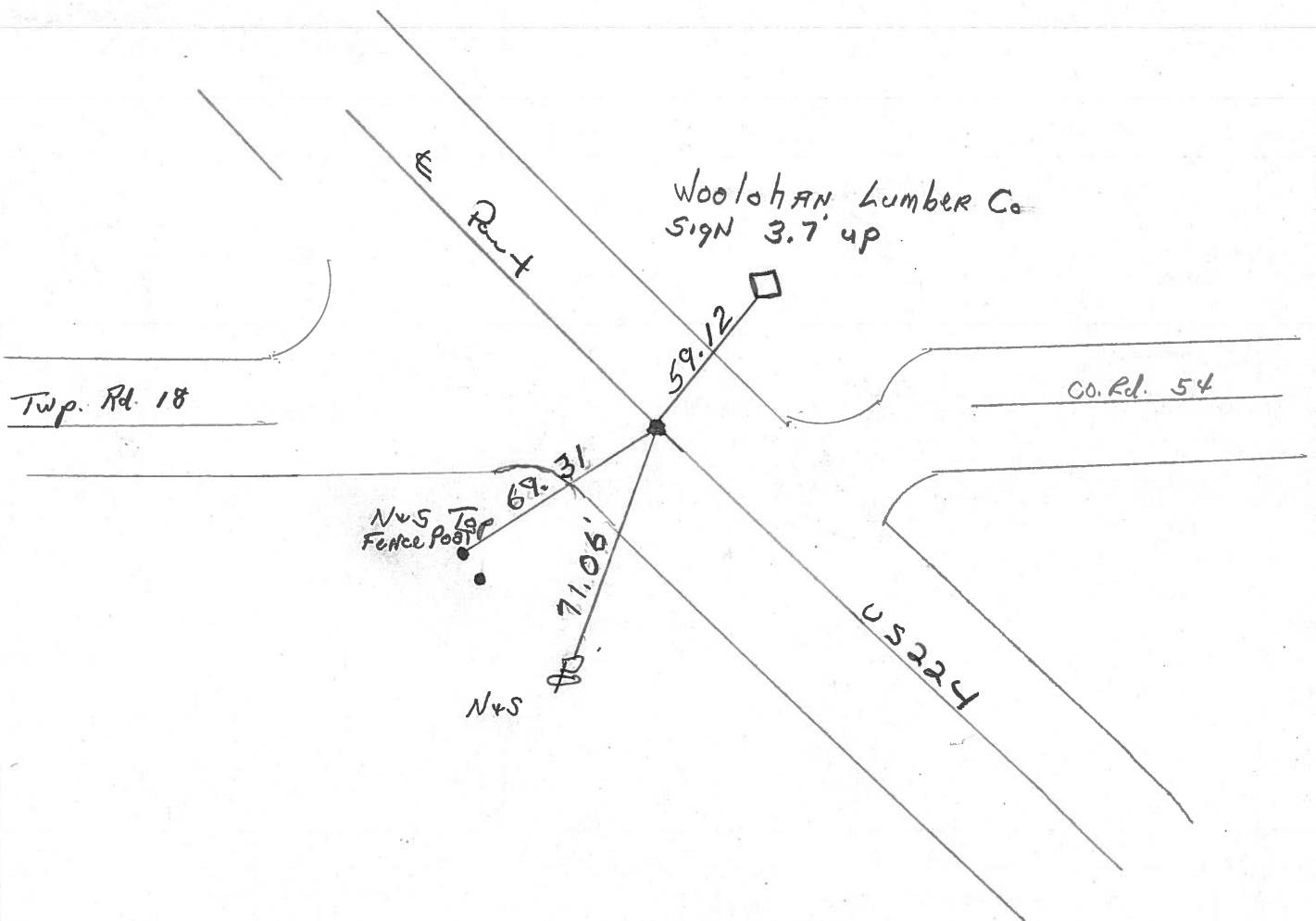
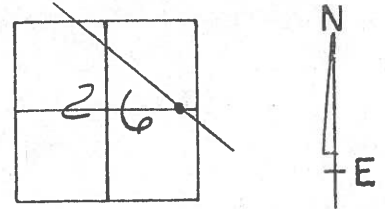
SHEET _____ OF _____

NOTES R. Cheney
 H.C. R. Barbour
 R.C. J. Ripple
Geyman

DATE 11-8-91
 WEATHER Sunny
 TEMP. 20°

ROUTE 224
 COUNTY Seneca
 TOWNSHIP Hope Well
 SECTION 26
T 2 N R 14 E

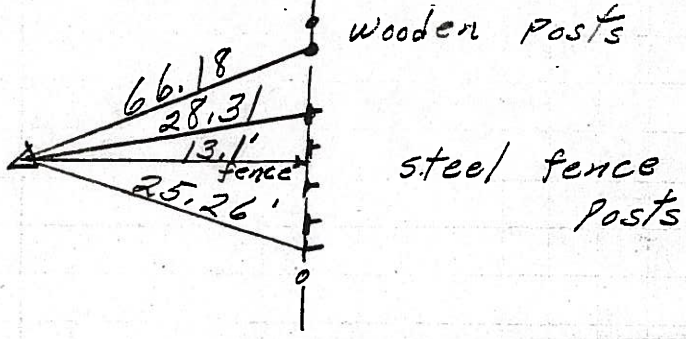
TYPE MONUMENT P.K. Washer
~~ON SURFACE - BELOW~~ P.K. Washer
~~LEFT - C. PAV'T. - RIGHT~~
 TO _____ EDGE PAVEMENT
 S.L.M. 600 + 17



| PERSONNEL | TITLE | PERSONNEL | TITLE | COUNTY | DATE |
|--|-------|-------------|-------|---------------------|--------------|
| Schneider | | | | Seneca | |
| Mosser | | | | S. R. U.S. 224 | WEATHER Fair |
| Barbour | | | | SEC. Tiffin By-pass | TEMP. 60° |
| Geyman | | | | | |
| DESCRIPTION <u>Ties for control points</u> | | | | | JOB NO. |
| LEFT | | CENTER LINE | | RIGHT | |

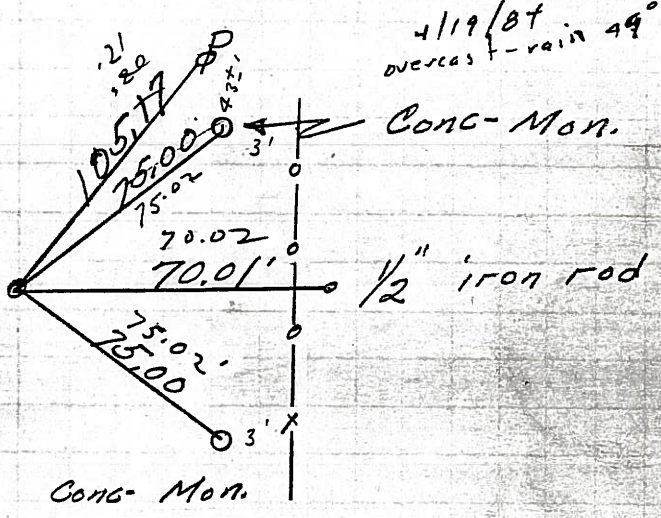
(40)

P.I.
80 + 51.15
 $\Delta = 14^\circ 58' \text{ Lt.}$
Fd. old Hub
8583



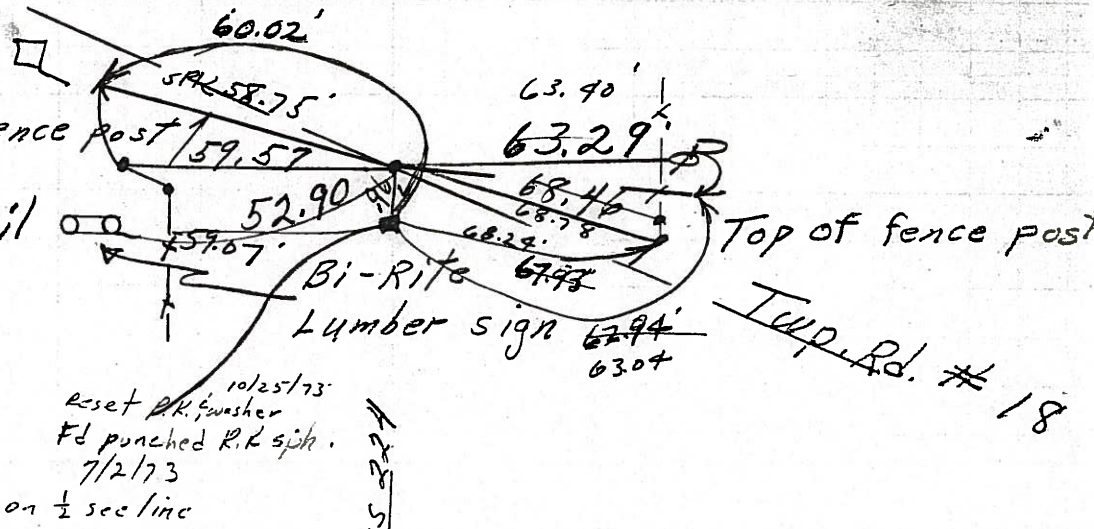
(39)

P.C. OK 7/2/73
69 + 22.22
Fd. R.R. spk.
1/2" down
reset minic spk. 10/25/73
8582

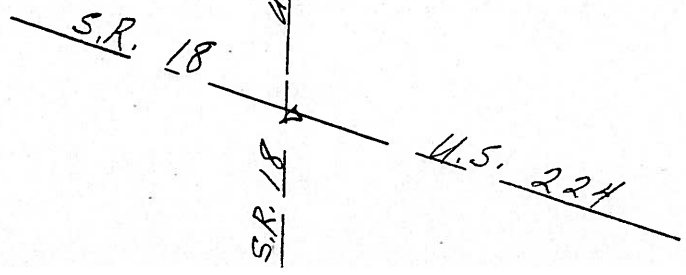


(38)

600 + 17 S.L.M.
Woolohan Lumber Co sign
3.7' up
reset minic spk 10/25/73 fence post
58 + 22
Fd. Hinge Nail
on top
8581



600 + 17
58 + 22
51 + 95



| PERSONNEL | TITLE | PERSONNEL | TITLE |
|-----------|-------|-----------|-------|
| Schneider | | | |
| Mosser | | | |
| Barbour | | | |
| Geyman | | | |

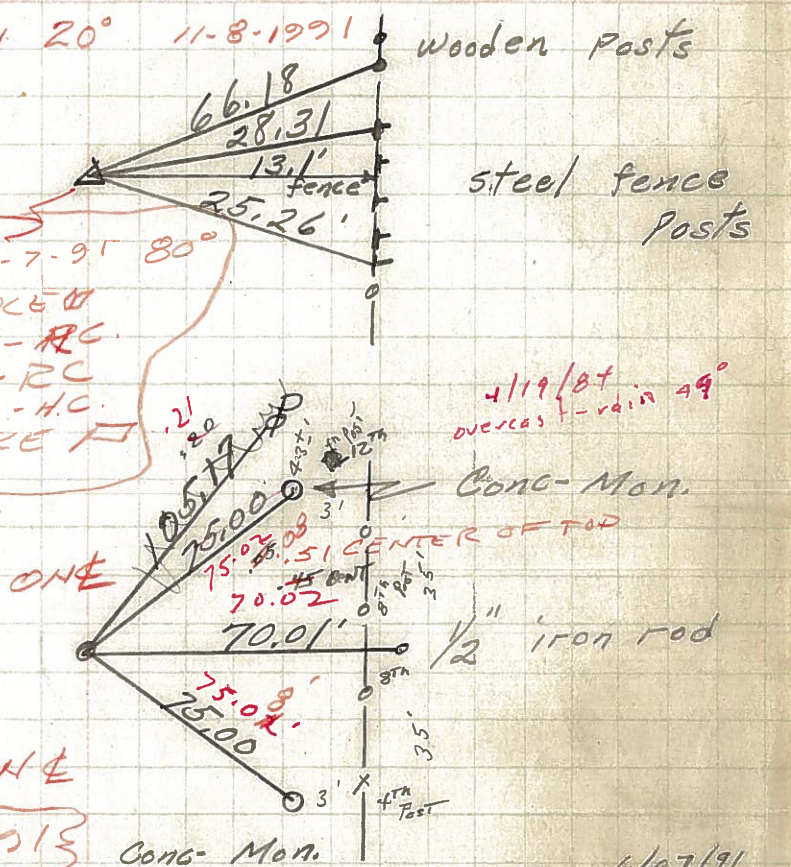
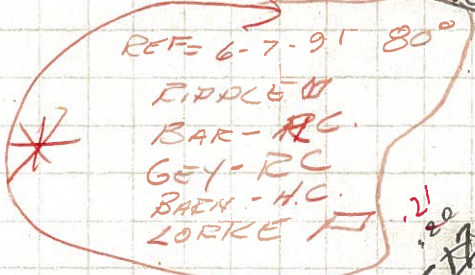
COUNTY Seneca DATE _____
 S. R. U.S. 224 WEATHER Fair
 SEC. Tiffin By-pass TEMP. 60°

DESCRIPTION Ties for control Points JOB NO. _____

40

SET PKI WAS IT CH- \checkmark
 ON \leftarrow 24' PAULT. B-HC
 P.I. R-ZC
 80+51.15 G-F
 $\Delta = 14^\circ 58'$ Lt.
 Fd. old Hub

8583



11+29
 611 17
 622 46

61177

P.C. OK 7/2/73
 69+22.22

39

Fd. R.R. spk.
 1/2" down
 reset mine spk. 10/25/73

8582

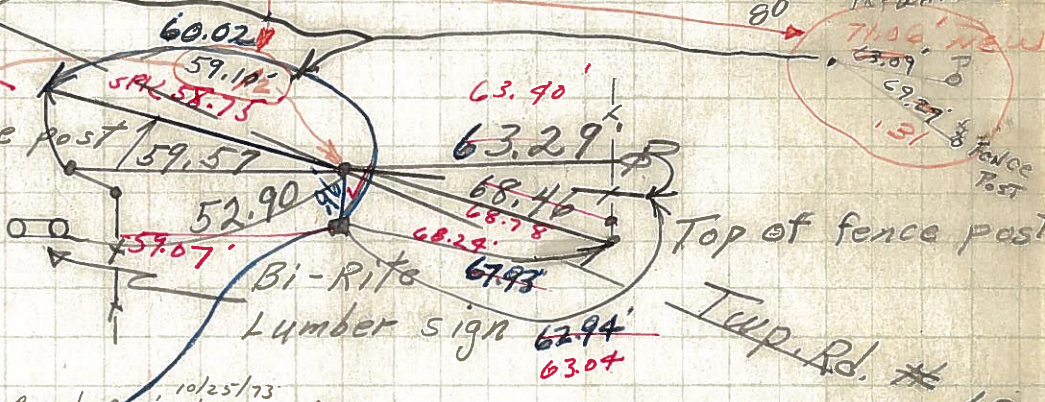
* ONE
 11-8-713
 Cong. Mon.

600+17 S.M.
 Woolohan Lumber Co sign
 3.74' up
 reset mine spk. 10/25/73

38

58+22
 Fd. Hinge Nail
 on top

8581



10/25/73
 reset PK washer
 Fd punched R.R. spk.
 7/2/73
 on 1/2 sec line

600+17
 58+22
 541+95

DONE WITH SR #18

