



O.D.O.T. DISTRICT 2 SURVEY OFFICE (USE ONLY)

PERSONNEL

REFERENCE NO. 39

SHEET 3 OF 12

NOTES O'DONNELL

DATE 8/19/21

ROUTE US 224

H.C. AUBLE

WEATHER SUNNY

COUNTY SENECA

R.C. NIESE

TEMP. 74°

TOWNSHIP HOPEWELL

RHOADES

DWG BY RHOADES PID 110482

SECTION 25

T 2 N R 14 E

TYPE MONUMENT MAG/WASHER

ON SURFACE - ~~BELOW~~ ON

OFFSET 0 PAVEMENT ON LT : RT

12.4' TO RT EDGE PAVEMENT

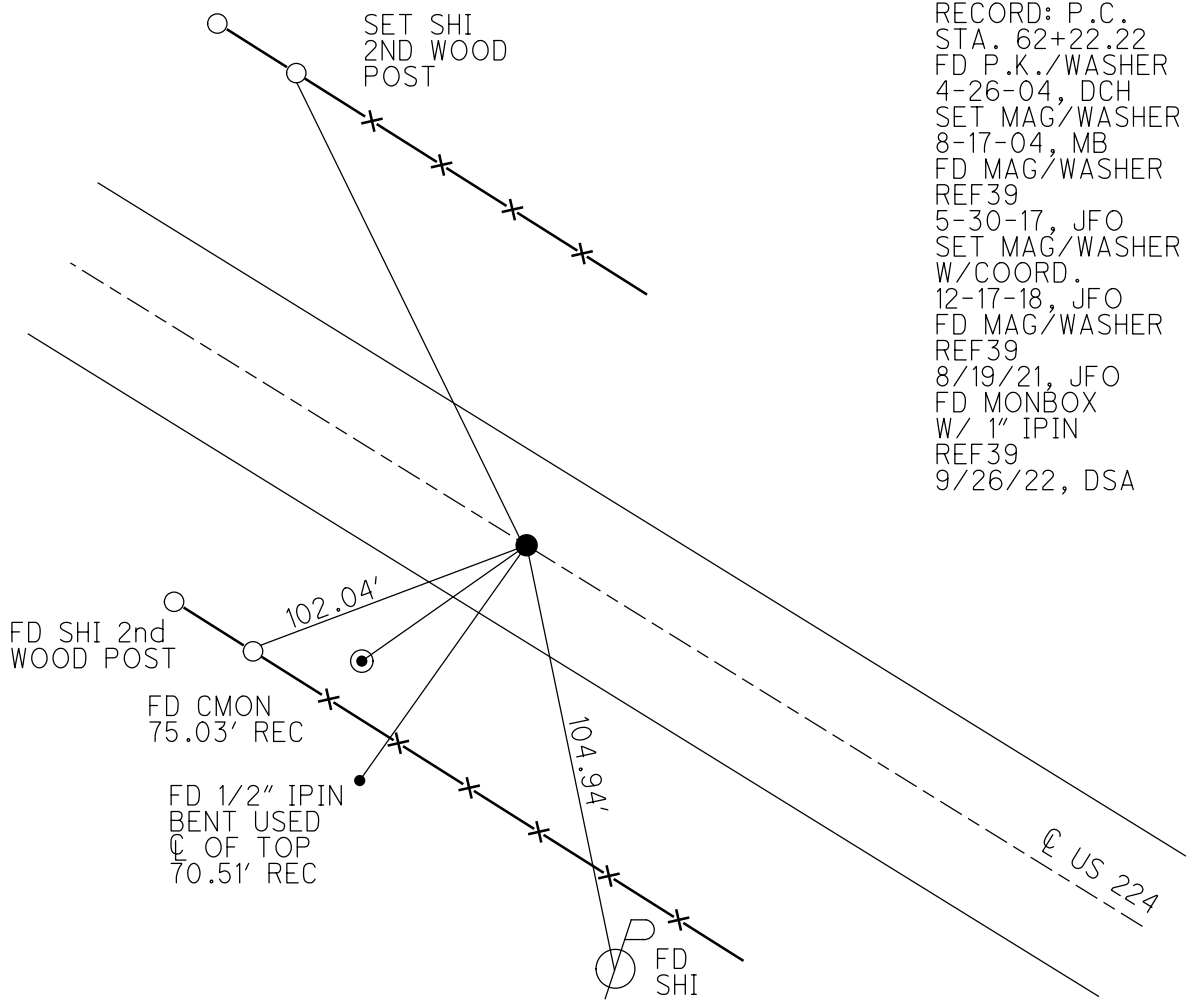
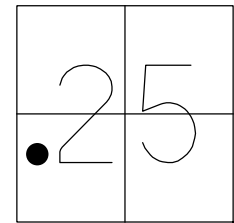
STATION: 611+17

HORIZ.DATUM: NAD83 (2011)

GEOID: 2012A

GRID: NORTHING: 522948.033

EASTING: 1773504.881



RECORD: P.C.  
 STA. 62+22.22  
 FD P.K./WASHER  
 4-26-04, DCH  
 SET MAG/WASHER  
 8-17-04, MB  
 FD MAG/WASHER  
 REF39  
 5-30-17, JFO  
 SET MAG/WASHER  
 W/COORD.  
 12-17-18, JFO  
 FD MAG/WASHER  
 REF39  
 8/19/21, JFO  
 FD MONBOX  
 W/ 1" IPIN  
 REF39  
 9/26/22, DSA

O.D.O.T. DISTRICT 2 SURVEY OFFICE (USE ONLY)

PERSONNEL

REFERENCE NO. 39

SHEET 3 OF 12

NOTES RHOADES DATE 5/30/17  
 H.C. O'DONNELL WEATHER CLOUDY  
 R.C. POORE TEMP. 75°

ROUTE US 224  
 COUNTY SENECA  
 TOWNSHIP HOPEWELL  
 SECTION 25

DWG BY MILLER PID 102819

T 2 N R 14 E

TYPE MONUMENT MAG/WASHER

ON SURFACE - ~~BELOW~~ ON

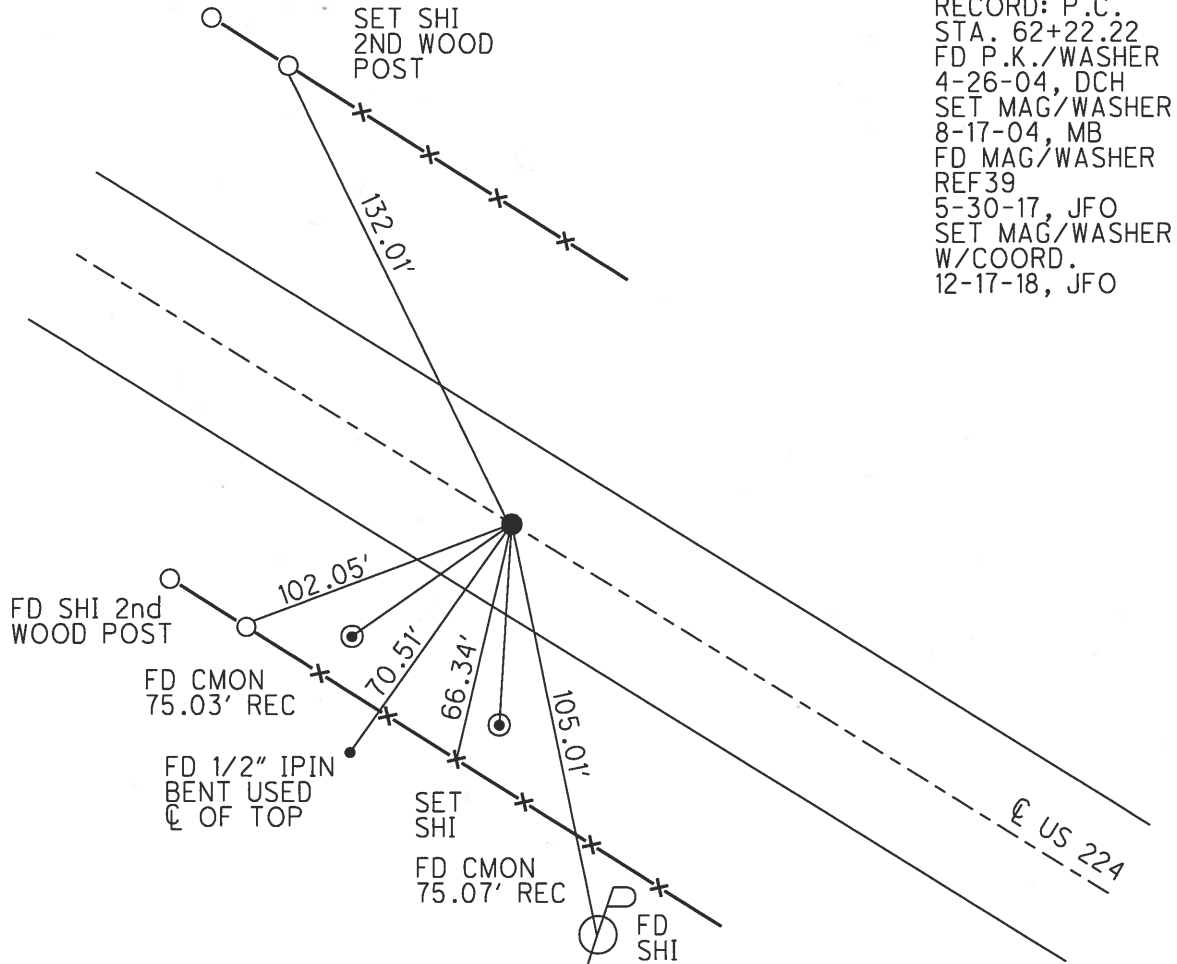
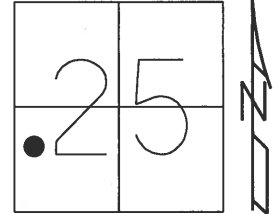
OFFSET ☉ PAVEMENT ON LT : RT

12.4' TO RT EDGE PAVEMENT

STATION: 611+17

HORZ. DATUM: NAD83 (2011) GEOID: 2012A

GRID: NORTHING: 522948.060 EASTING: 1773504.870



RECORD: P.C.  
 STA. 62+22.22  
 FD P.K./WASHER  
 4-26-04, DCH  
 SET MAG/WASHER  
 8-17-04, MB  
 FD MAG/WASHER  
 REF39  
 5-30-17, JFO  
 SET MAG/WASHER  
 W/COORD.  
 12-17-18, JFO

O.D.O.T. DISTRICT 2 SURVEY OFFICE

PERSONNEL

REFERENCE NO. 39

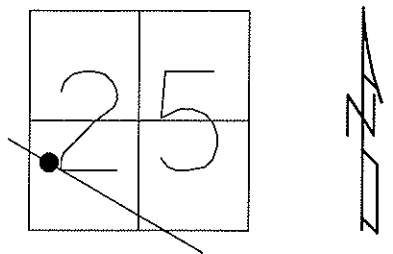
SHEET 16 OF 26

NOTES NUHFER  
 H.C. HOOKER  
 R.C. HOMAN  
HUSS  
ARMS

DATE 4-26-04  
 WEATHER SUNNY  
 TEMP. 50°

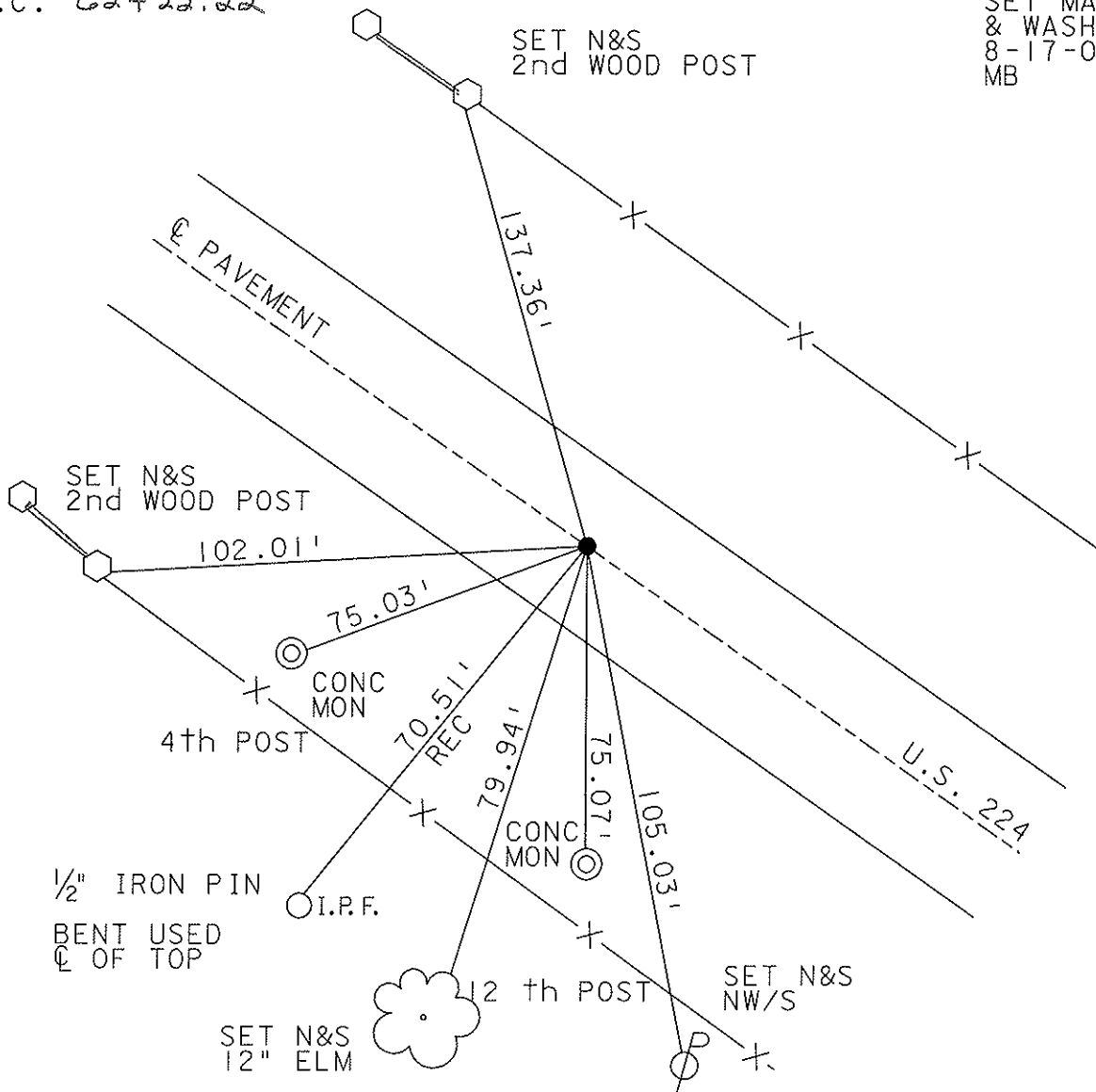
ROUTE US 224  
 COUNTY SENECA  
 TOWNSHIP HOPEWELL  
 SECTION 25  
T 2 N R 14 E

TYPE MONUMENT PK & WASHER  
 ON SURFACE ~~BELOW~~ ON  
~~LEFT - C PAV'T - RIGHT~~ ON  
12.4' TO RT EDGE PAVEMENT  
 S.L.M. 611+17



P.C. 62+22.22

SET MAG NAIL  
& WASHER  
8-17-04  
MB



# O.D.O.T. DISTRICT 2 SURVEY OFFICE

PERSONNEL

REFERENCE NO. 39

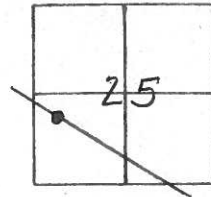
SHEET \_\_\_\_\_ OF \_\_\_\_\_

NOTES R. Cheney  
 H.C. R. BARBOUR  
 R.C. J. Ripple  
R. Geyman

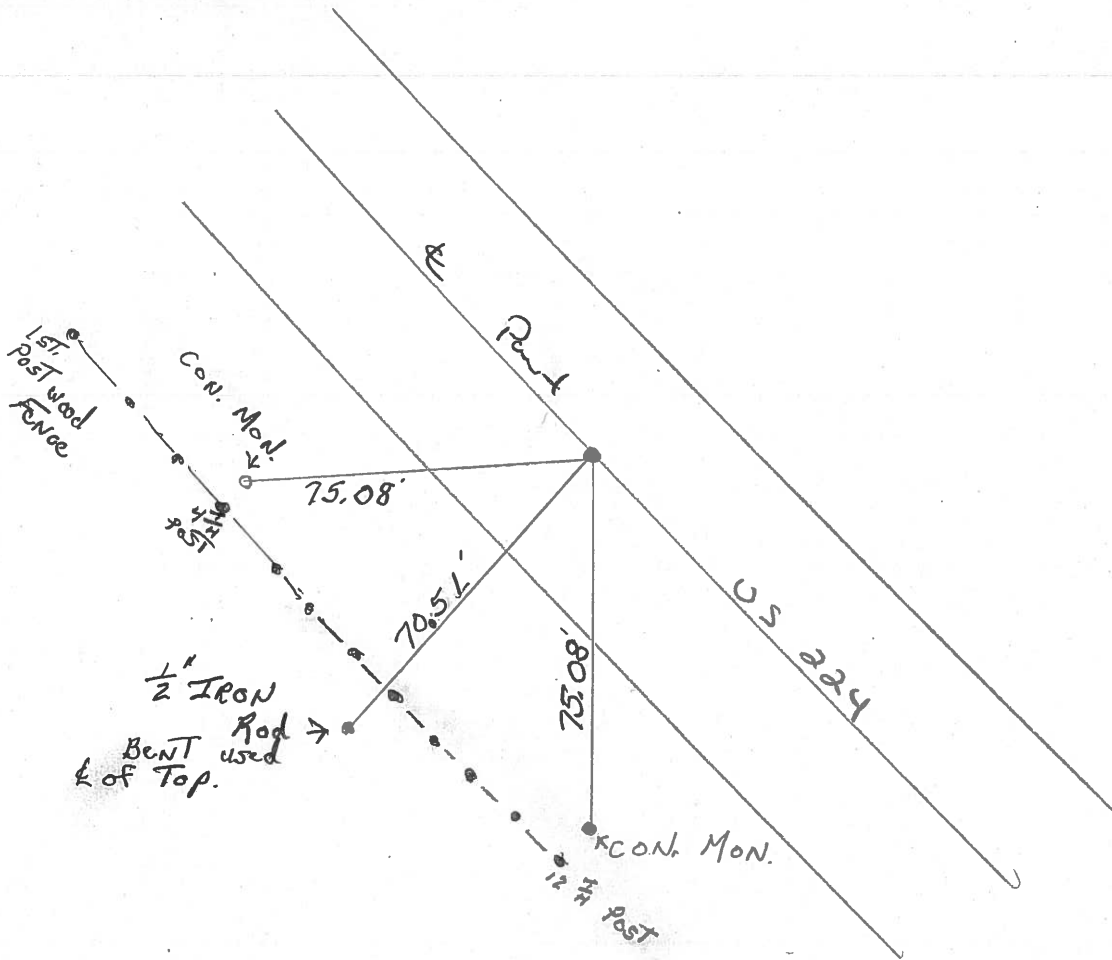
DATE 11-8-91  
 WEATHER SUNNY  
 TEMP. 20°

ROUTE 224  
 COUNTY Seneca  
 TOWNSHIP Hope Well  
 SECTION 25  
T2 N R14 E

TYPE MONUMENT P.K. Washer  
~~ON SURFACE~~ - BELOW Mine Spike  
~~LEFT - & PAV'T. - RIGHT~~  
TO EDGE PAVEMENT  
 S.L.M. 611 + 17



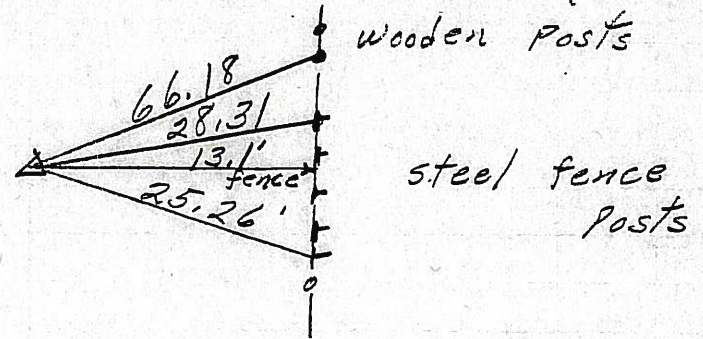
P.C. 69+22.22 Plan station



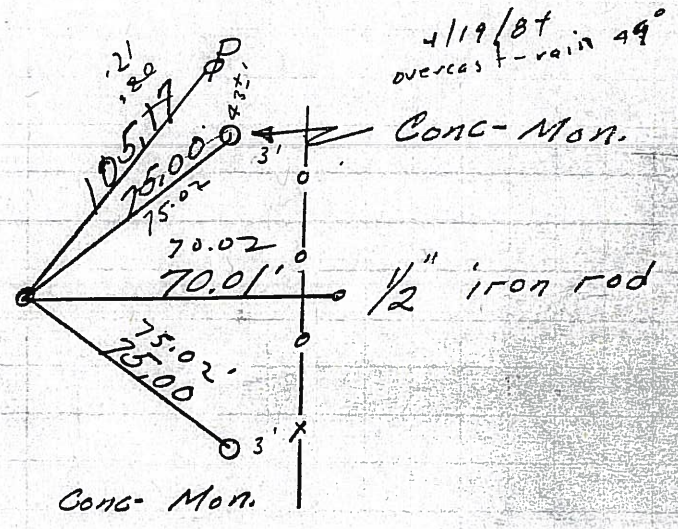


PERSONNEL	TITLE	PERSONNEL	TITLE	COUNTY	DATE
Schneider				Seneca	
Mosser				S. R. U.S. 224	WEATHER Fair
Barbour				SEC Tiffin By-pass	TEMP 60°
Geyman					
DESCRIPTION	Ties for control points				JOB NO.
	LEFT	CENTER LINE	RIGHT		

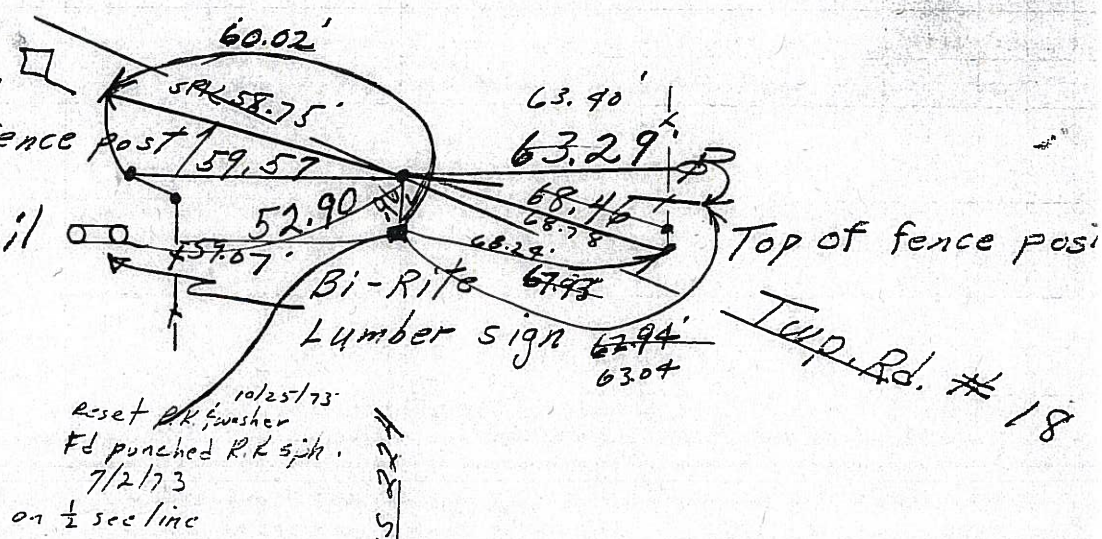
(40) P.I.  
 80+51.15  
 $\Delta = 14^\circ 58' \text{ Lt.}$   
 Fd. old Hub  
 8583



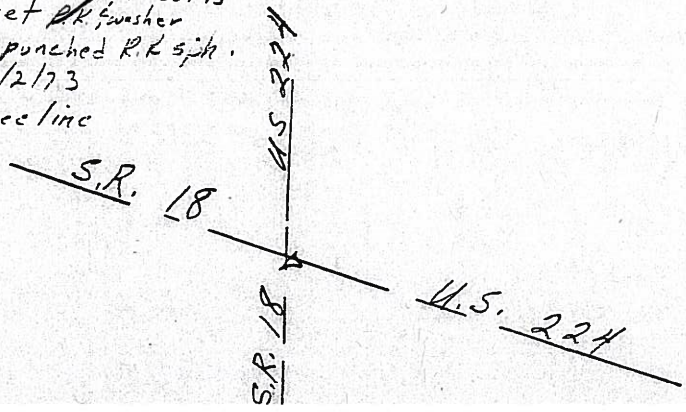
(39) P.C. OK 7/2/73  
 69+22.22  
 Fd. R.R. spk.  
 1/2" down  
 reset mine spk. 10/25/73  
 8582



(38) 600+17 sum. Woolohan Lumber Co sign 3.7' up  
 reset mine spk 10/25/73 fence post  
 58+22  
 Fd. Hinge Nail on top.  
 8581



600+17  
 58+22  
 541+95

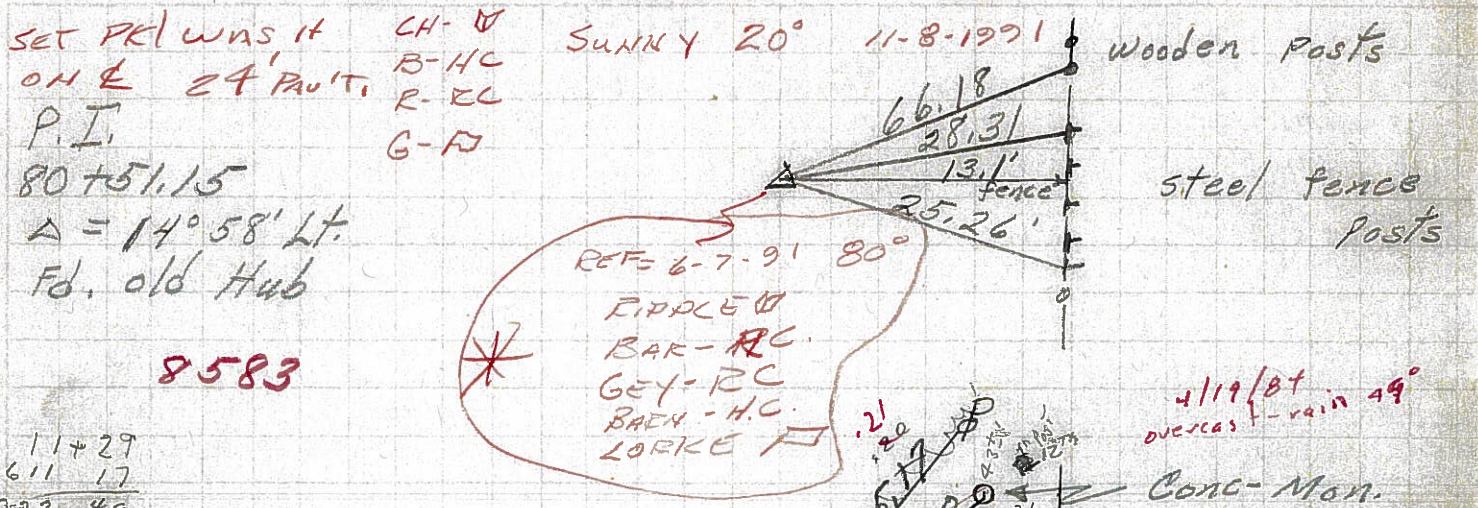




PERSONNEL	TITLE	PERSONNEL	TITLE	COUNTY	DATE	WEATHER	TEMP.
Schneider				Seneca		Fair	60°
Mosser				S. R. U.S. 224			
Barbour				SEC. Tiffin By-pass			
Geyman							

DESCRIPTION Ties for control points JOB NO. \_\_\_\_\_

(40)



8583

11+29  
611 17  
622 46

611+7

P.C. OK 7/2/73  
69+22.22

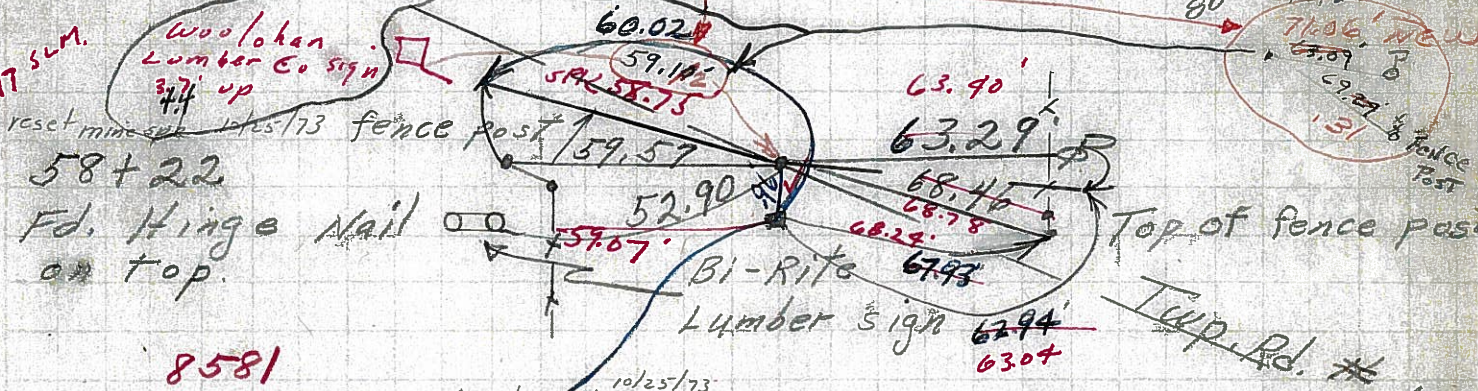
(39)

Fd. R.R. spk.  
1/2" down  
reset mine spk. 10/25/73

8582

\* ON E  
11-8-91  
CONC-MON.

600+17 sum.  
wooloken  
Lumber Co sign  
3 1/4" up



8581

(38)

58+22  
Fd. Hinge Nail  
on top.

10/25/73  
reset PK washer  
Fd punched R.R. spk.  
7/2/73  
on 1/2 sec line

Temp. Rd. # 18

600+17  
58+22  
541+95

DONE WITH SR #18

S.R. 18

U.S. 224



PERSONNEL	TITLE	PERSONNEL	TITLE	COUNTY	DATE	WEATHER
Schneider		Zahn		Seneca	8-21-62	Fair
Hawk		Schwartz		S. R. #224		
Mosser				SEC. 10.67 to 14.76		TEMP. 80°
Snider				4.09 Mi.		
DESCRIPTION Ties for Control Points				T-35		JOB NO. 02524
LEFT		CENTER LINE		RIGHT		

43

41-A

41

40

39

