

O.D.O.T. DISTRICT 2 SURVEY OFFICE (USE ONLY)

PERSONNEL _____

REFERENCE NO. 40

SHEET 4 OF 12

NOTES NUHFER

DATE 11/8/04

ROUTE US 224

H.C. _____

WEATHER SUNNY

COUNTY SENECA

R.C. _____

TEMP. 20°

TOWNSHIP HOPEWELL

DWG BY MILLER PID 102819

SECTION 25

T 2 N R 14 E

TYPE MONUMENT IPIN

ON SURFACE - BELOW _____

OFFSET \varnothing PAVEMENT _____ LT : RT

_____ TO _____ EDGE PAVEMENT

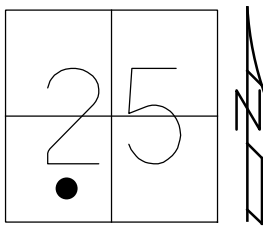
STATION: 622+46

HORZ. DATUM: -

GEOID: -

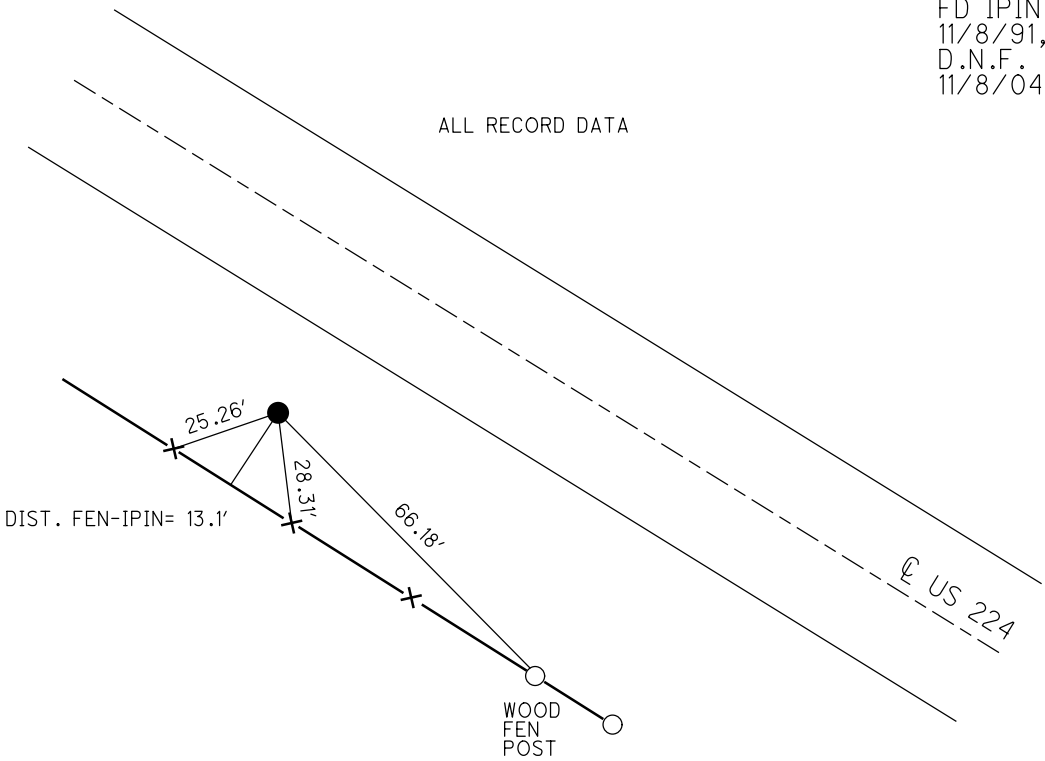
GRID: NORTHING: -

EASTING: -



RECORD: P.I.
 STA. 80+51.15
 $\Delta = 14^\circ 58'$ LT
 $D = 0^\circ 40'$
 $R = 8594.37'$
 $T = 1128.93'$
 $L = 2245.00'$
 FD OLD HUB
 1971
 FD IPIN
 11/8/91, RC
 D.N.F.
 11/8/04, RGN

ALL RECORD DATA



O.D.O.T. DISTRICT 2 SURVEY OFFICE

PERSONNEL _____

REFERENCE NO. 40

SHEET 17 OF 26

NOTES R. NUMBER

DATE 11-08-04

ROUTE US 224

H.C. _____

WEATHER SUNNY

COUNTY SENECA

R.C. _____

TEMP. 20°

TOWNSHIP HOPEWELL

SECTION 25

T 2 N R 14 E

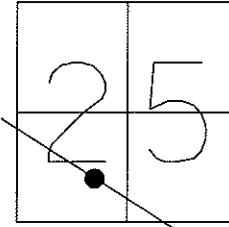
TYPE MONUMENT _____ DID NOT FIND _____

ON SURFACE - BELOW _____

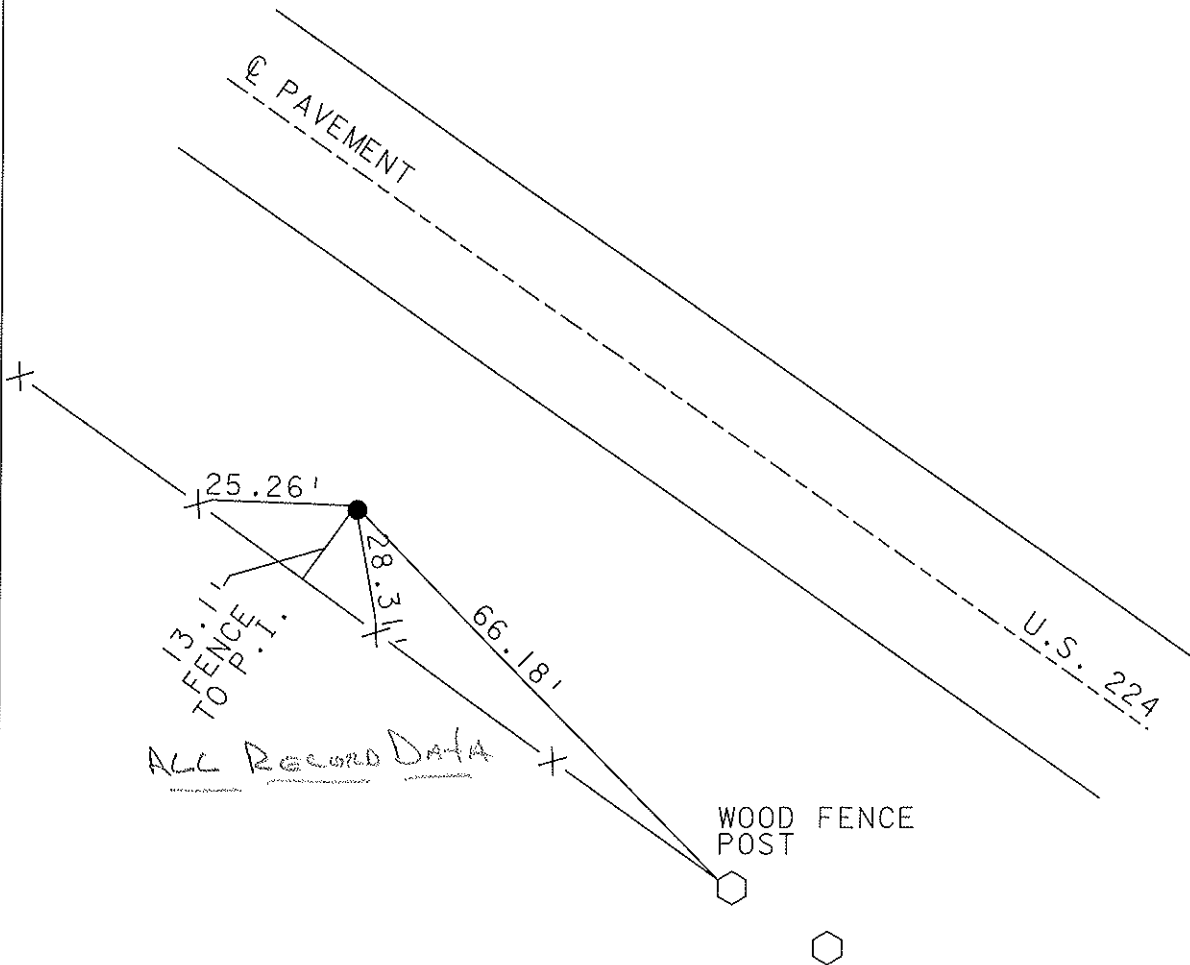
LEFT - Q PAV'T - RIGHT _____

_____ TO _____ EDGE PAVEMENT

S.L.M. _____ 622+46 _____



P.I. DELTA = 14°58' LT. - Record
 IRON
 Sta. 80+51.15



O.D.O.T. DISTRICT 2 SURVEY OFFICE

PERSONNEL

REFERENCE NO. 40

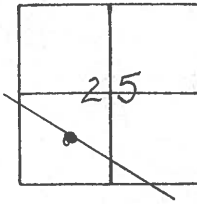
SHEET OF

NOTES R. Cheney
 H.C. R. Barbour
 R.C. J. Ripple
R. Geyman

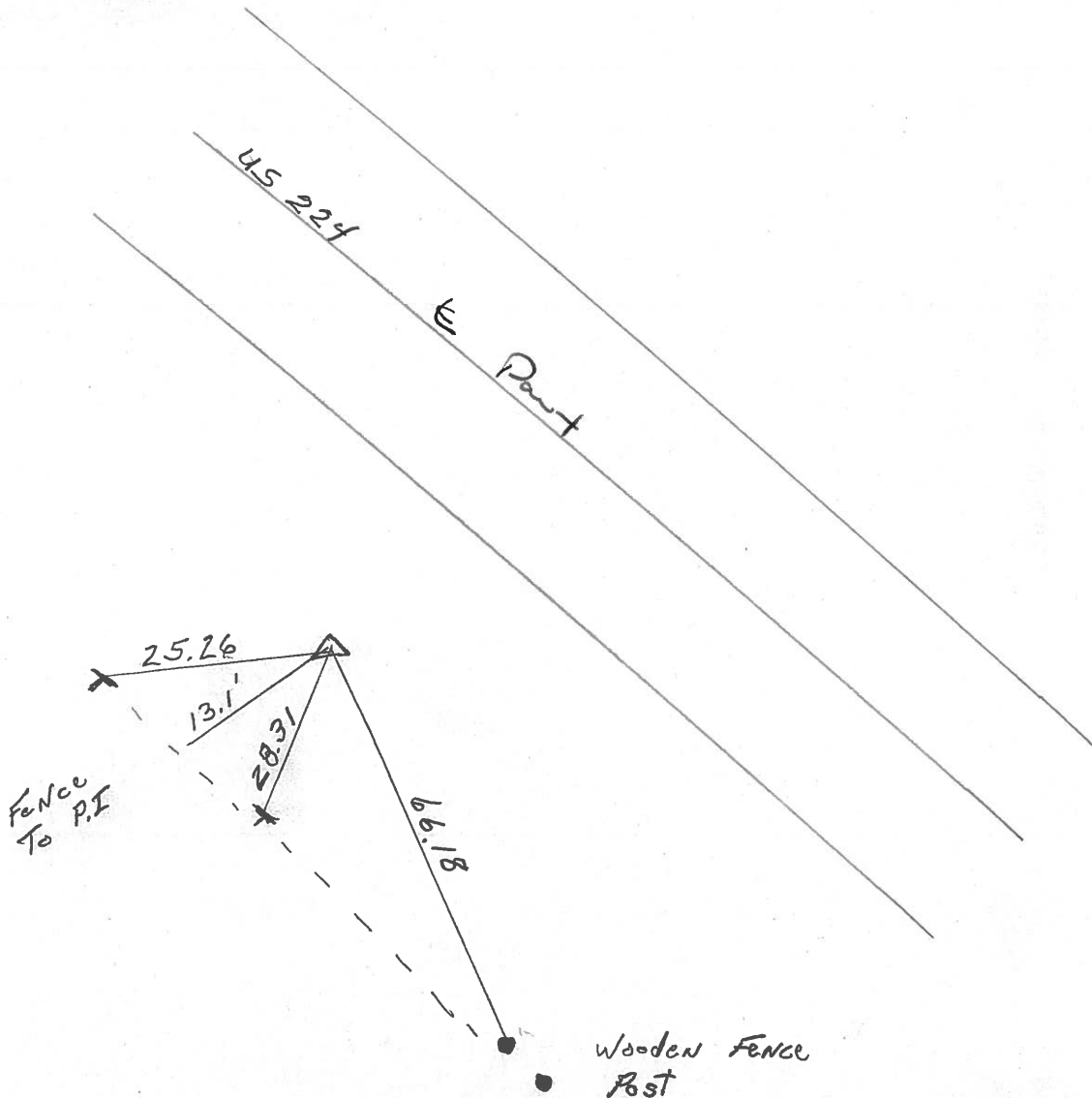
DATE 11-8-91
 WEATHER Sunny
 TEMP. 20°

ROUTE 224
 COUNTY Seneca
 TOWNSHIP Hopewell
 SECTION 25
T2 N R 14 E

TYPE MONUMENT PK.
 ON SURFACE - BELOW
~~LEFT~~ PAV'T. - RIGHT
 TO RT. EDGE PAVEMENT
 S.L.M. 622 + 46

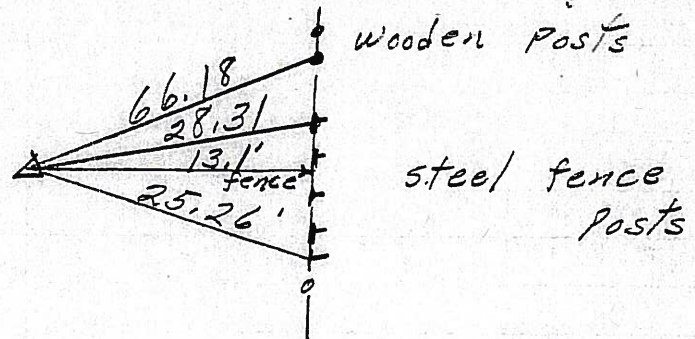


P.I. $\Delta = 14^{\circ} 58' \text{ LT.}$
 IRON
 Plan station 80 + 51.15

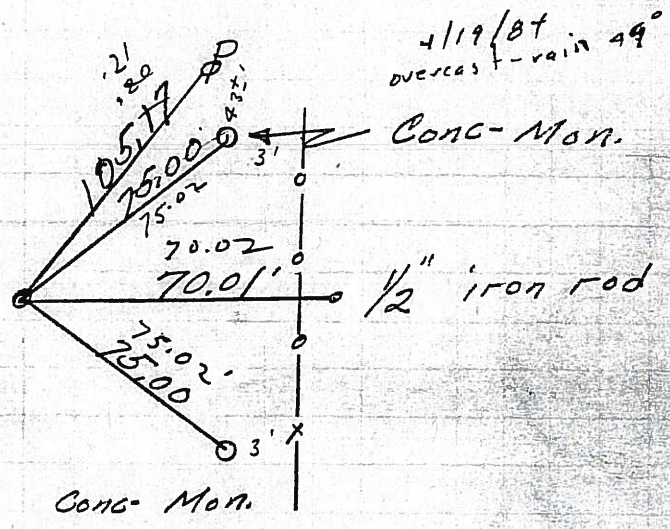


PERSONNEL	TITLE	PERSONNEL	TITLE	COUNTY	DATE		
Schneider				Seneca			
Mosser				S. R. U.S. 224	WEATHER Fair		
Barbour				SEC. Tiffin By-Pass	TEMP 60°		
Geyman							
DESCRIPTION Ties for control points				LEFT	CENTER LINE	RIGHT	JOB NO.

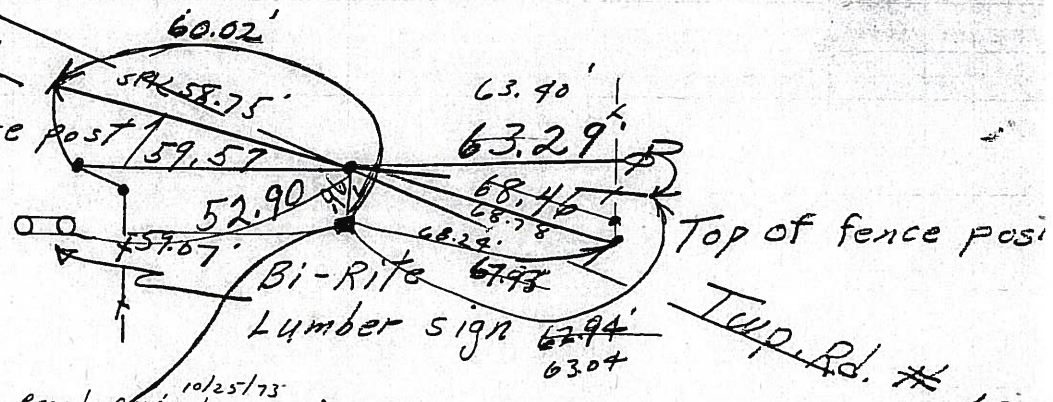
40 P.I.
80 + 51.15
A = 14° 58' Lt.
Fd. old Hub
8583



39 P.C. OK 7/2/73
69 + 22.22
Fd. R.R. spk.
1/2" down
reset mine spk. 10/25/73
8582

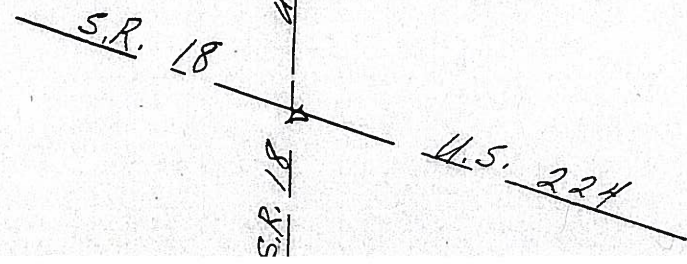


38 600 + 17 sum.
woolohan Lumber Co sign
3.7' up
reset mine spk 10/25/73
58 + 22
Fd. Hinge Nail
on top.
8581



10/25/73
reset R.R. washer
Fd punched R.R. spk.
7/2/73
on 1/2 sec line

600 + 17
58 + 22
541 + 95



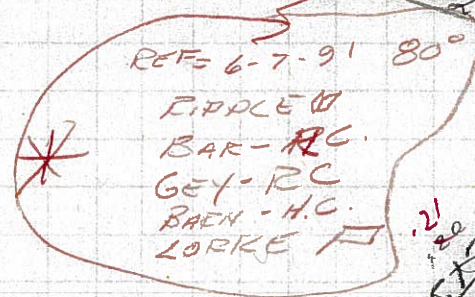
PERSONNEL	TITLE	PERSONNEL	TITLE	COUNTY	DATE	WEATHER	TEMP.
Schneider				Seneca		Fair	60°
Mosser				S. R. U.S. 224			
Barbour				SEC. Tiffin By-Pass			
Geyman							

DESCRIPTION Ties for control points LEFT CENTER LINE RIGHT JOB NO.

40

SET PK1 was it CH-~~W~~ SUNNY 20° 11-8-1971 wooden posts
 ON ϵ 24' PAULT. B-HC
 P.I. R-KL
 80+51.15 G-R
 $\Delta = 140^{\circ} 58' Lt.$
 Fd. old Hub

8583



11+29
 611 17
 @22 46

611+7

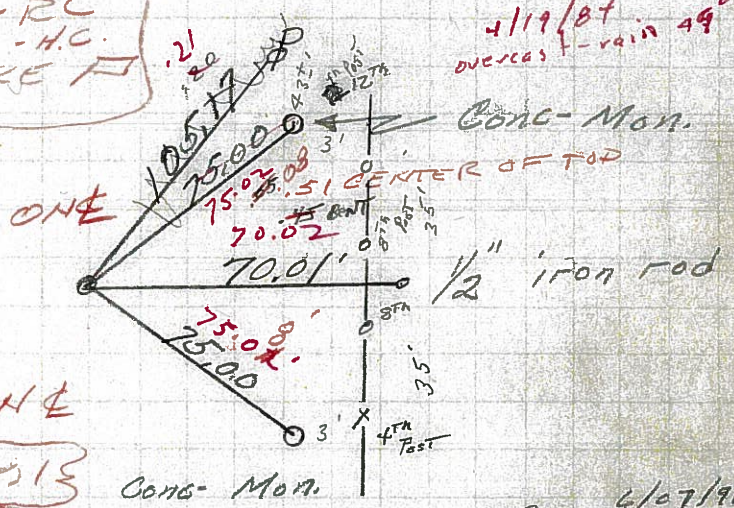
P.C. OK 7/2/73
 69+22.22

39

Fd. R.R. spk.
 1/2" down
 reset mine spk. 10/25/73

8582

* ON ϵ
 11-8-71
 Conc. Mon.

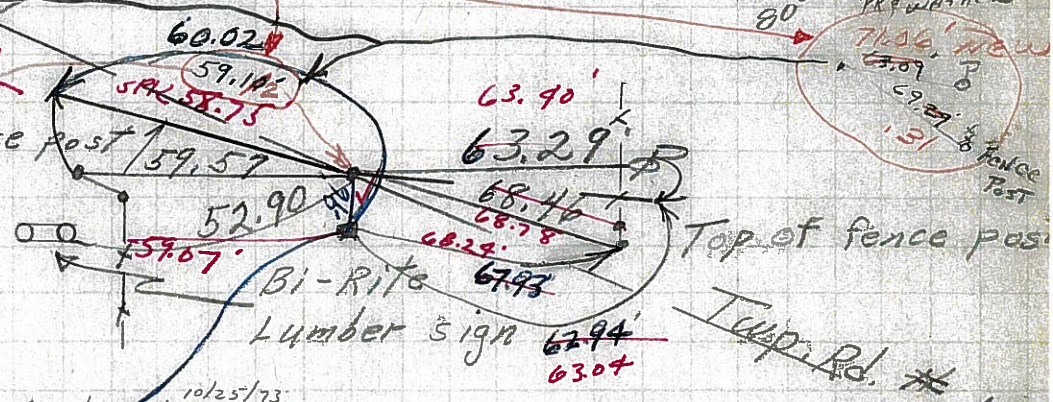


600+17 SLM.
 Wooloken
 Lumber Co sign
 374 up
 reset mine spk. 10/25/73

38

58+22
 Fd. Hinge Nail
 on top.

8581



10/25/73
 reset PK finisher
 Fd punched R.R. spk.
 7/2/73
 on 1/2 sec line

600+17
 58+22
 541+95

DONE WITH SRT#18

