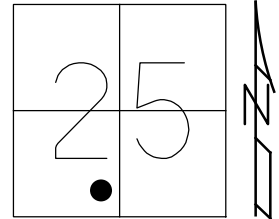


O.D.O.T. DISTRICT 2 SURVEY OFFICE (USE ONLY)

PERSONNEL \_\_\_\_\_ REFERENCE NO. 41 SHEET 5 OF 12  
 NOTES ASTON DATE 9/8/23 ROUTE US 224  
 H.C. NIESE WEATHER DRIZZLE COUNTY SENECA  
 R.C. RHOADES TEMP. 66° TOWNSHIP HOPEWELL  
 DWG BY RHOADES PID R/W SECTION 25  
 T 2 N R 14 E

TYPE MONUMENT MONBOX W/1" IPIN  
 ON SURFACE - ~~BELOW~~ ON  
 OFFSET ☑ PAVEMENT ON LT : RT  
- TO - EDGE PAVEMENT  
 STATION: 632+98

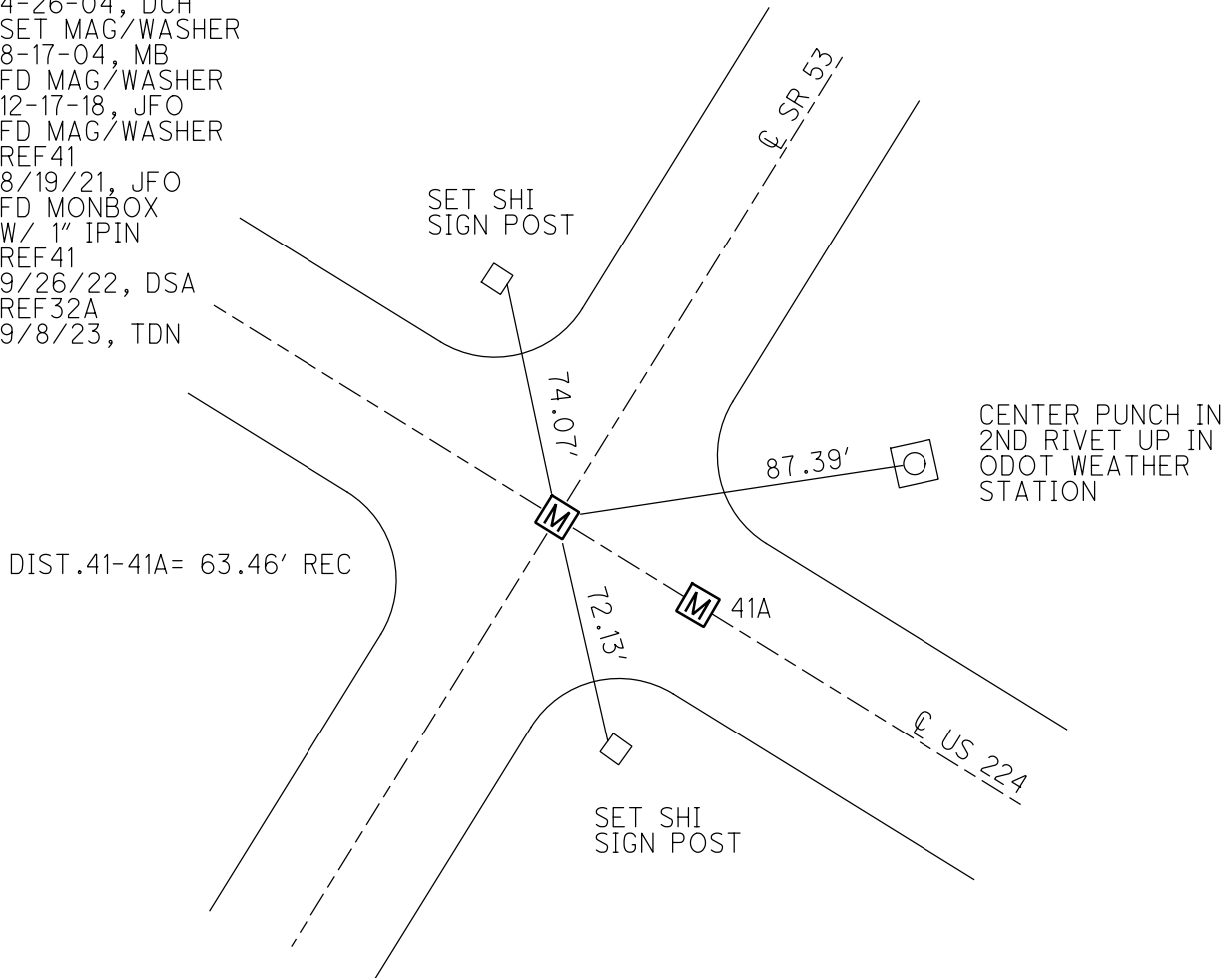


HORZ. DATUM: NAD83 (2011) GEOID: NAVD88 2018  
 GRID: NORTHING: 521703.128 EASTING: 1775288.453

RECORD: P.O.T.  
 STA 91+03.70  
 FD P.K./WASHER  
 4-26-04, DCH  
 SET MAG/WASHER  
 8-17-04, MB  
 FD MAG/WASHER  
 12-17-18, JFO  
 FD MAG/WASHER  
 REF41  
 8/19/21, JFO  
 FD MONBOX  
 W/ 1" IPIN  
 REF41  
 9/26/22, DSA  
 REF32A  
 9/8/23, TDN

NOTE: REF 32A SR 53

SENECA LDP:  
 N: 290379.981  
 E: 149975.670



O.D.O.T. DISTRICT 2 SURVEY OFFICE (USE ONLY)

PERSONNEL

REFERENCE NO. 41

SHEET 5 OF 12

NOTES RHOADES

DATE 6/13/17

ROUTE US 224

H.C. O'DONNELL

WEATHER SUNNY

COUNTY SENECA

R.C. POORE

TEMP. 82°

TOWNSHIP HOPEWELL

SECTION 25

DWG BY MILLER PID 110482

T 2 N R 14 E

TYPE MONUMENT MAG/WASHER

ON SURFACE - ~~BELOW~~ ON

OFFSET  $\varnothing$  PAVEMENT ON LT : RT

       TO        EDGE PAVEMENT

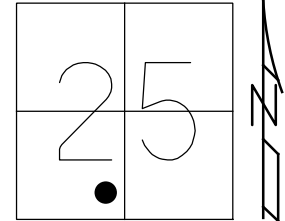
STATION: 632+98

HORZ. DATUM: NAD83 (2011)

GEOID: 2012A

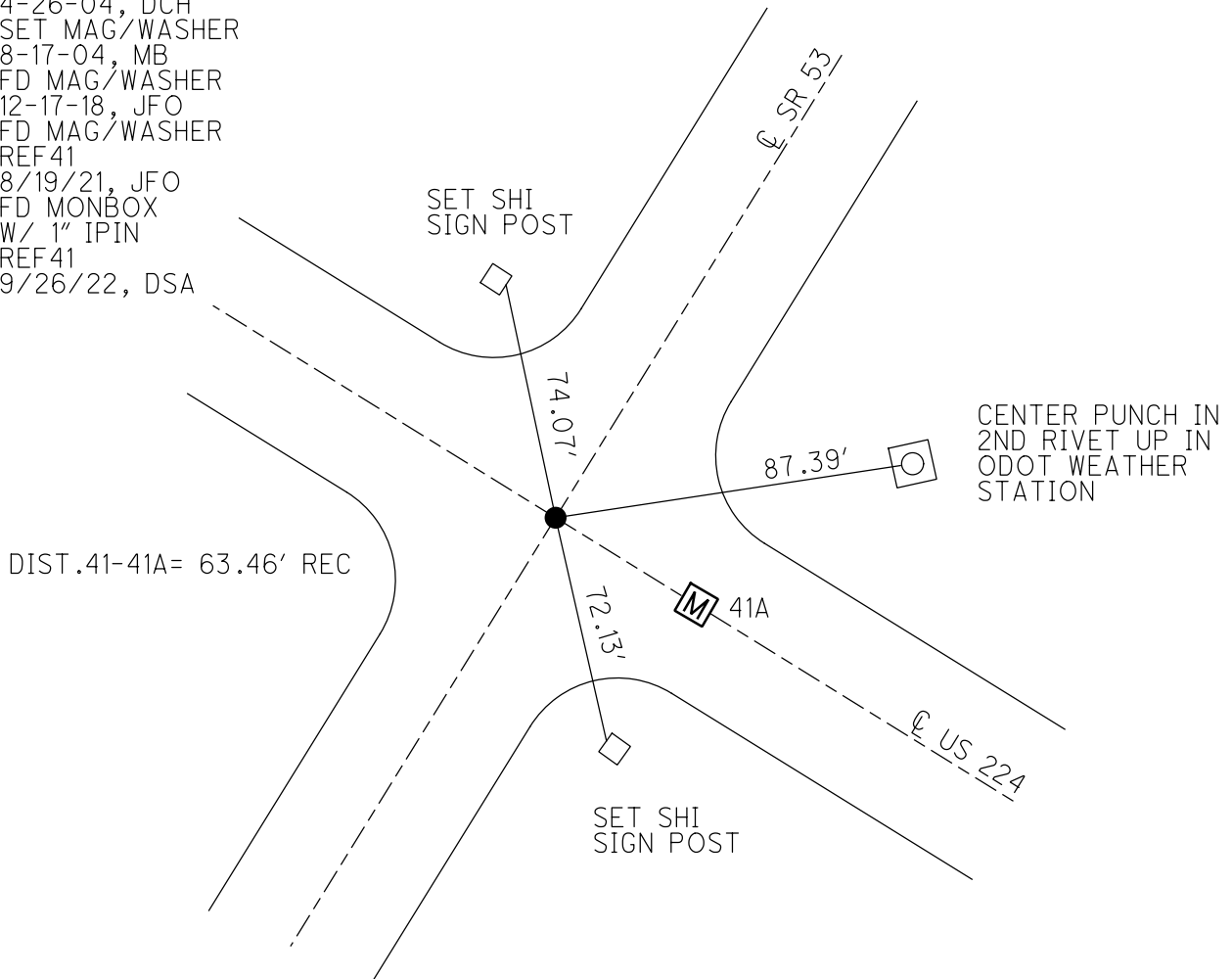
GRID: NORTHING: 521703.128

EASTING: 1775288.453



RECORD: P.O.T.  
 STA 91+03.70  
 FD P.K./WASHER  
 4-26-04, DCH  
 SET MAG/WASHER  
 8-17-04, MB  
 FD MAG/WASHER  
 12-17-18, JFO  
 FD MAG/WASHER  
 REF41  
 8/19/21, JFO  
 FD MONBOX  
 W/ 1" IPIN  
 REF41  
 9/26/22, DSA

NOTE: REF 32A SR 53



O.D.O.T. DISTRICT 2 SURVEY OFFICE (USE ONLY)

PERSONNEL

REFERENCE NO. 41

SHEET 5 OF 12

NOTES RHOADES

DATE 6/13/17

ROUTE US 224

H.C. O'DONNELL

WEATHER SUNNY

COUNTY SENECA

R.C. POORE

TEMP. 82°

TOWNSHIP HOPEWELL

SECTION 25

DWG BY MILLER PID 102819

T 2 N R 14 E

TYPE MONUMENT MAG/WASHER

ON SURFACE - ~~BELOW~~ ON

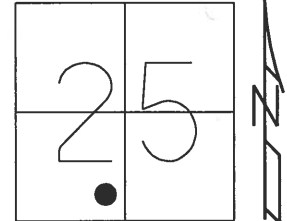
OFFSET Q PAVEMENT ON LT : RT

     TO      EDGE PAVEMENT

STATION: 632+98

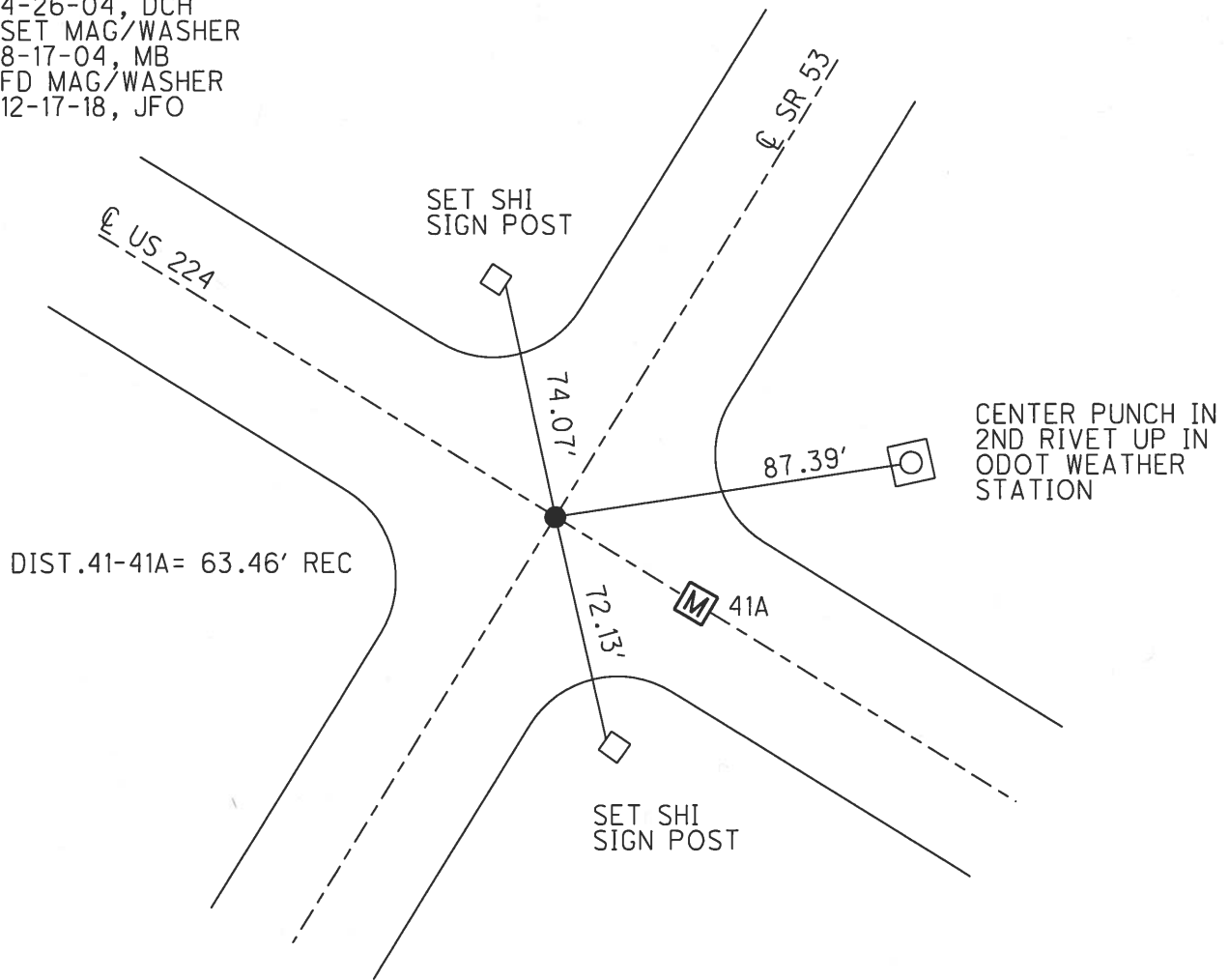
HORIZ.DATUM: NAD83 (2011) GEOID: 2012A

GRID: NORTHING: 521703.132 EASTING: 1775288.480



RECORD: P.O.T.  
 STA 91+03.70  
 FD P.K./WASHER  
 4-26-04, DCH  
 SET MAG/WASHER  
 8-17-04, MB  
 FD MAG/WASHER  
 12-17-18, JFO

NOTE: REF 32A SR 53



O.D.O.T. DISTRICT 2 SURVEY OFFICE

PERSONNEL

REFERENCE NO. 41

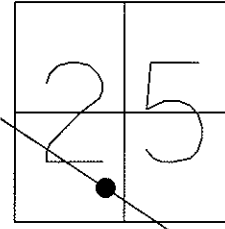
SHEET 18 OF 26

NOTES NUHFER  
 H.C. HOOKE  
 R.C. HOMAN  
HUSS  
ARMS

DATE 4-26-04  
 WEATHER SUNNY  
 TEMP. 50°

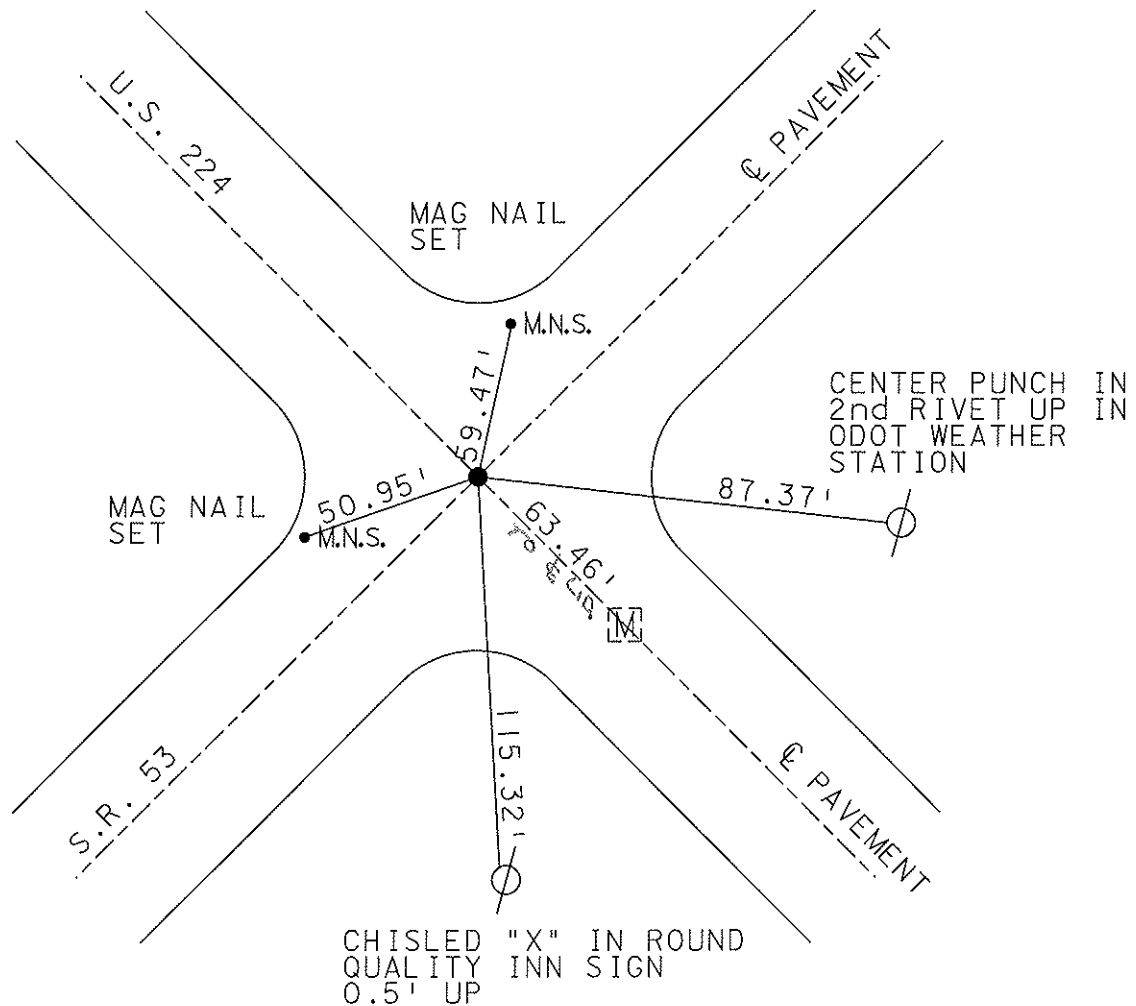
ROUTE US 224  
 COUNTY SENECA  
 TOWNSHIP HOPEWELL  
 SECTION 25  
T 2 N R 14 E

TYPE MONUMENT PK & WASHER  
 ON SURFACE ~~-BELOW~~ ON  
~~LEFT~~ - Q PAV'T - ~~RIGHT~~ ON  
TO EDGE PAVEMENT  
 S.L.M. 632+98



P.O.T. INTERSECTION, US 224 sta. 91+03.70  
 S.R. 53 & 224

SET MAG NAIL  
 & WASHER  
 8-17-04  
 MB



O.D.O.T. DISTRICT 2 SURVEY OFFICE

PERSONNEL \_\_\_\_\_

REFERENCE NO. 41

SHEET \_\_\_\_\_ OF \_\_\_\_\_

NOTES A. Cheney

H.C. R. BARBOUR

R.C. J. Ripple

R. Geyman

DATE 11-8-91

WEATHER Sunny

TEMP. 20°

ROUTE 224

COUNTY Seneca

TOWNSHIP Hope Well

SECTION 25

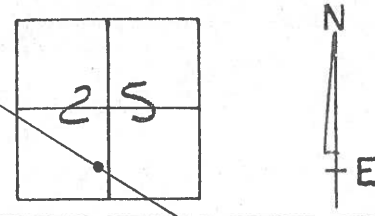
T 2 N R 14 E

TYPE MONUMENT P.K. + Washer  
 ON SURFACE - BELOW B.R. spk. 3" Down

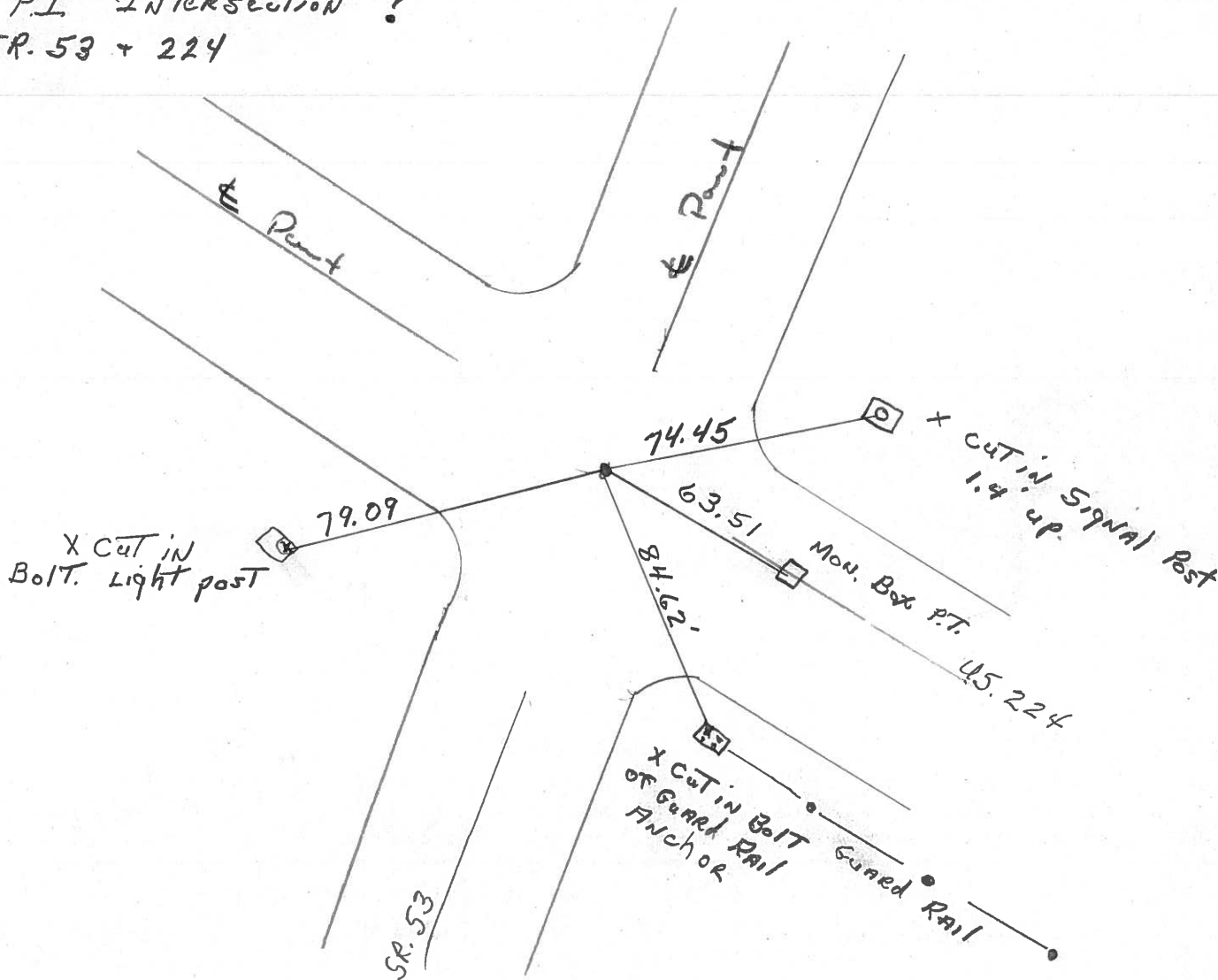
~~LEFT~~ - C. PAV'T. - ~~RIGHT~~

TO \_\_\_\_\_ EDGE PAVEMENT

S.L.M. 632+98



PI INTERSECTION ?  
SR. 53 + 224



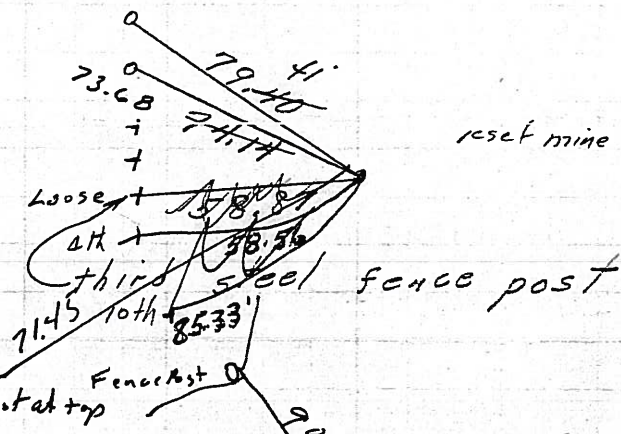
PERSONNEL	TITLE	PERSONNEL	TITLE	COUNTY	DATE		
Schneider				Seneca	4-20-71		
Mosser				S. R. U.S. 22A	WEATHER Fair		
Barbour				SEC. Tiffin By-Pass	TEMP. 60°		
Geyman							
DESCRIPTION Ties for Control Points				LEFT	CENTER LINE	RIGHT	JOB NO.

$$\begin{array}{r} 541 \times 95 \\ 158 \times 61 \\ \hline 700 \times 54 \end{array}$$

N&S on top of wood fence posts

43

7/2/73  
 P.C.  
 158+61.27  
 Found P.K. Nail  
 on top



4/20/84 sunny 47°  
 reset mine spk 10/25/73

8587

2nd best one → Galv. steel post at top  
 w/ly of wood post  
 4/20/84 sunny 47°  
 Fd P.K. on surface

42

125+34.1

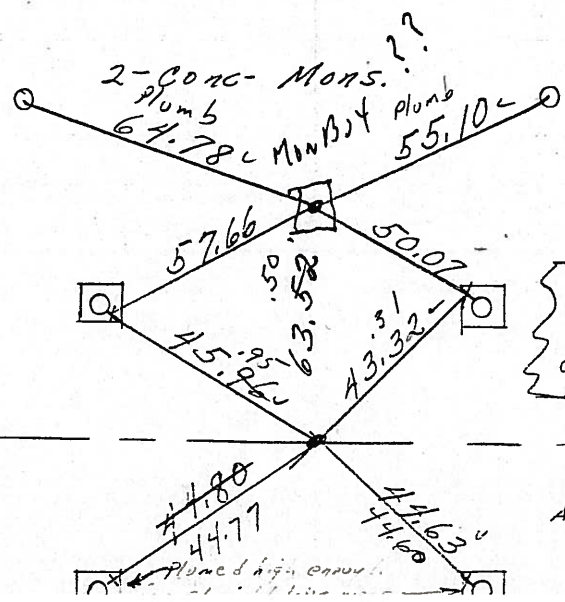
8586

Cor. Rd. # 19  
 South

no points shown

41-A

7/2/73  
 P.T.  
 91+67.22 ✓  
 P.K. Nail on top



reset mine spks  
 10/25/73

"X" on conc. bases of Light Poles.

S.R. # 53 South

41

91+03.70  
 R.R. spk. 2" down

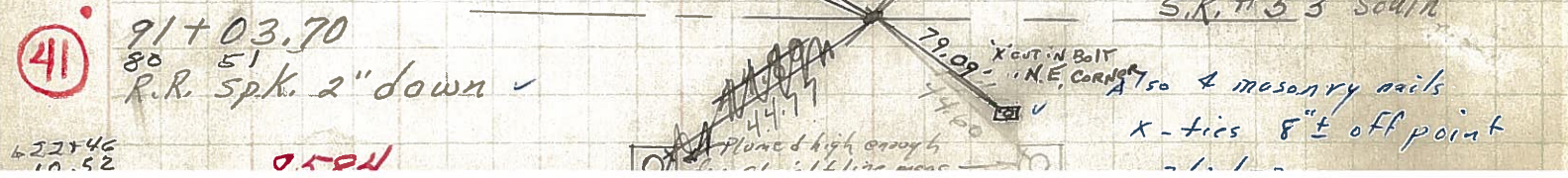
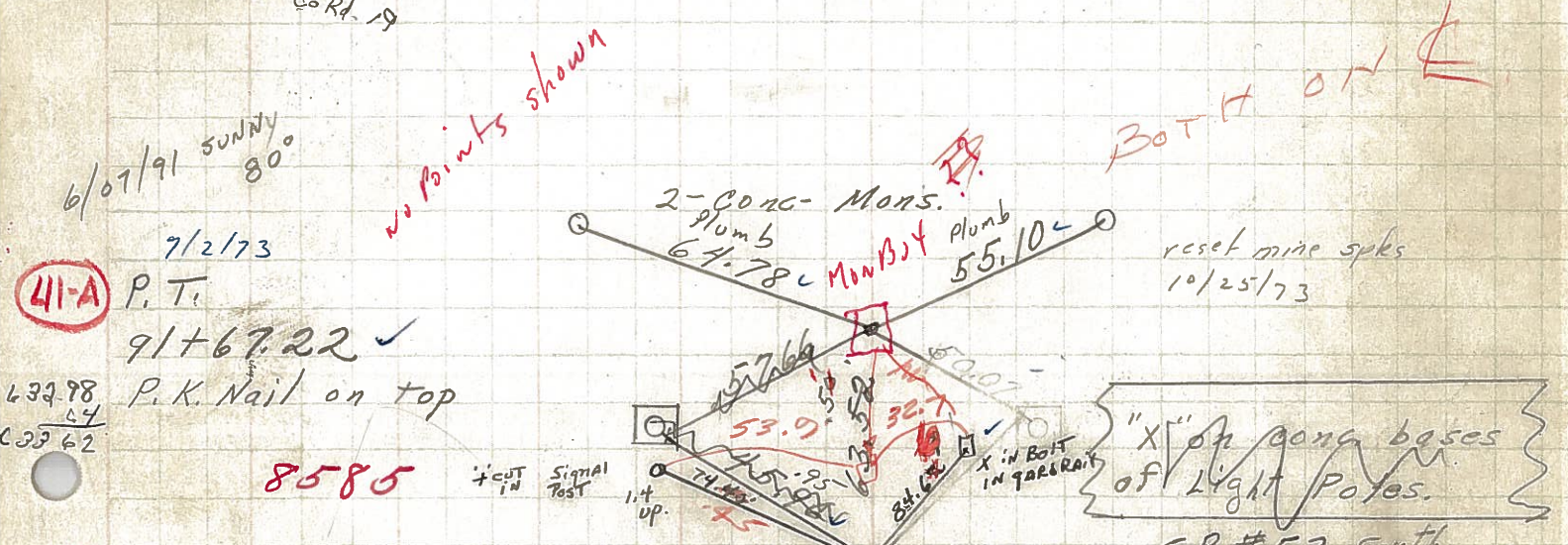
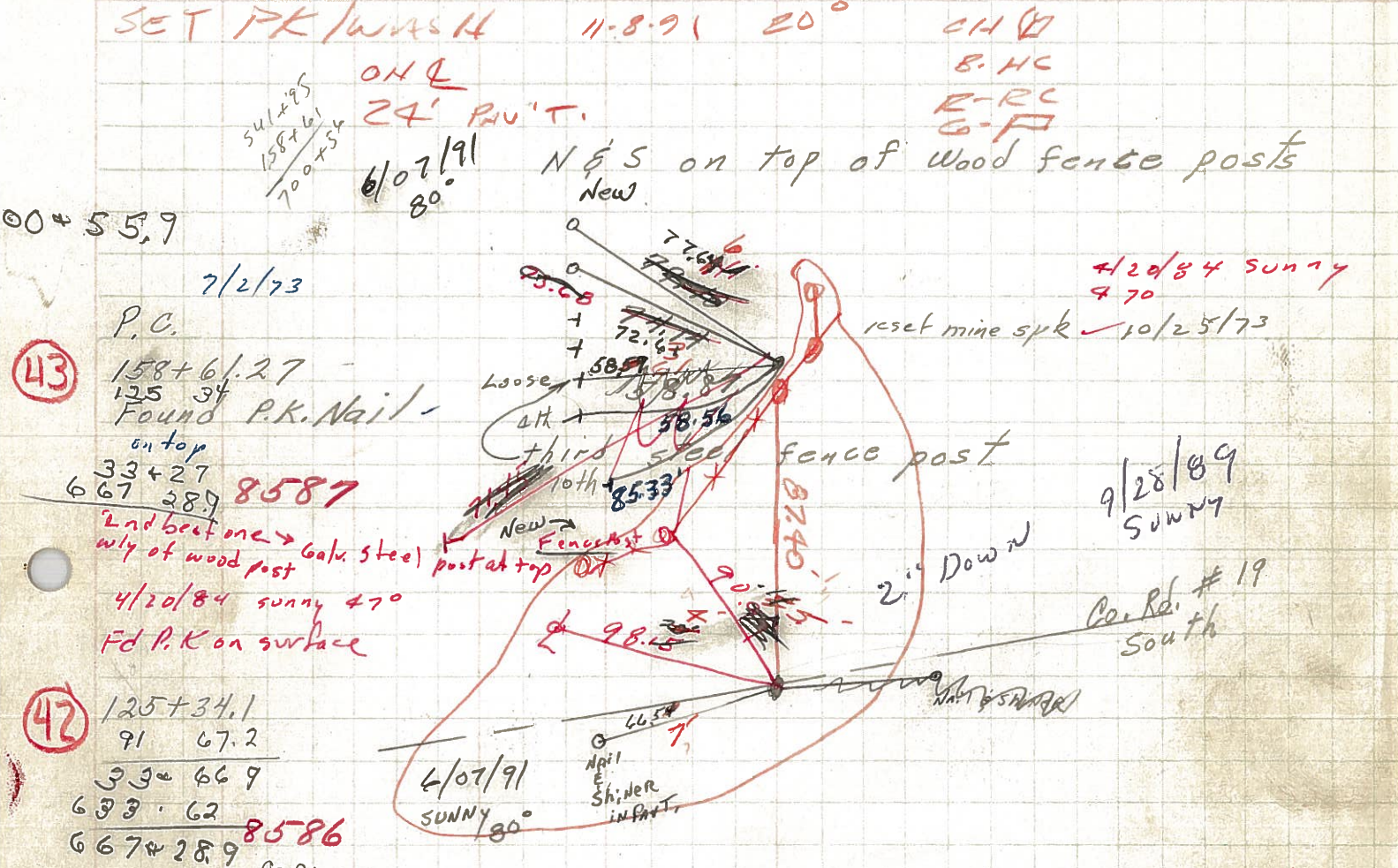
Also 4 masonry nails  
 X-ties 8" ± off point

8584

PERSONNEL TITLE PERSONNEL TITLE  
 Schneider \_\_\_\_\_  
 Mosser \_\_\_\_\_  
 Barbour \_\_\_\_\_  
 Geyman \_\_\_\_\_

COUNTY Seneca DATE 4-20-71  
 S. R. U.S. 224 WEATHER Fair  
 SEC. Tiffin By-Pass TEMP. 60°

DESCRIPTION Ties for Control Points JOB NO. \_\_\_\_\_



PERSONNEL	TITLE	PERSONNEL	TITLE
Schneider		Zahn	
Hawk		Schwartz	
Mosser			
Snider			

COUNTY Seneca DATE 8-21-62

S. R. #224 WEATHER Fair

SEC. 10.67 to 14.76 TEMP. 80°

DESCRIPTION Ties for Central Points 4.09 Mi. T-35 JOB NO. 02524

LEFT CENTER LINE RIGHT

43

41-A

11

10

39

