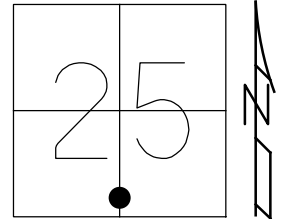


O.D.O.T. DISTRICT 2 SURVEY OFFICE (USE ONLY)

PERSONNEL _____ REFERENCE NO. 41 A SHEET 6 OF 12
 NOTES ASTON DATE 9/8/23 ROUTE US 224
 H.C. NIESE WEATHER DRIZZLE COUNTY SENECA
 R.C. ASTON TEMP. 66° TOWNSHIP HOPEWELL
 DWG BY RHOADES PID R/W SECTION 25
 T 2 N R 14 E

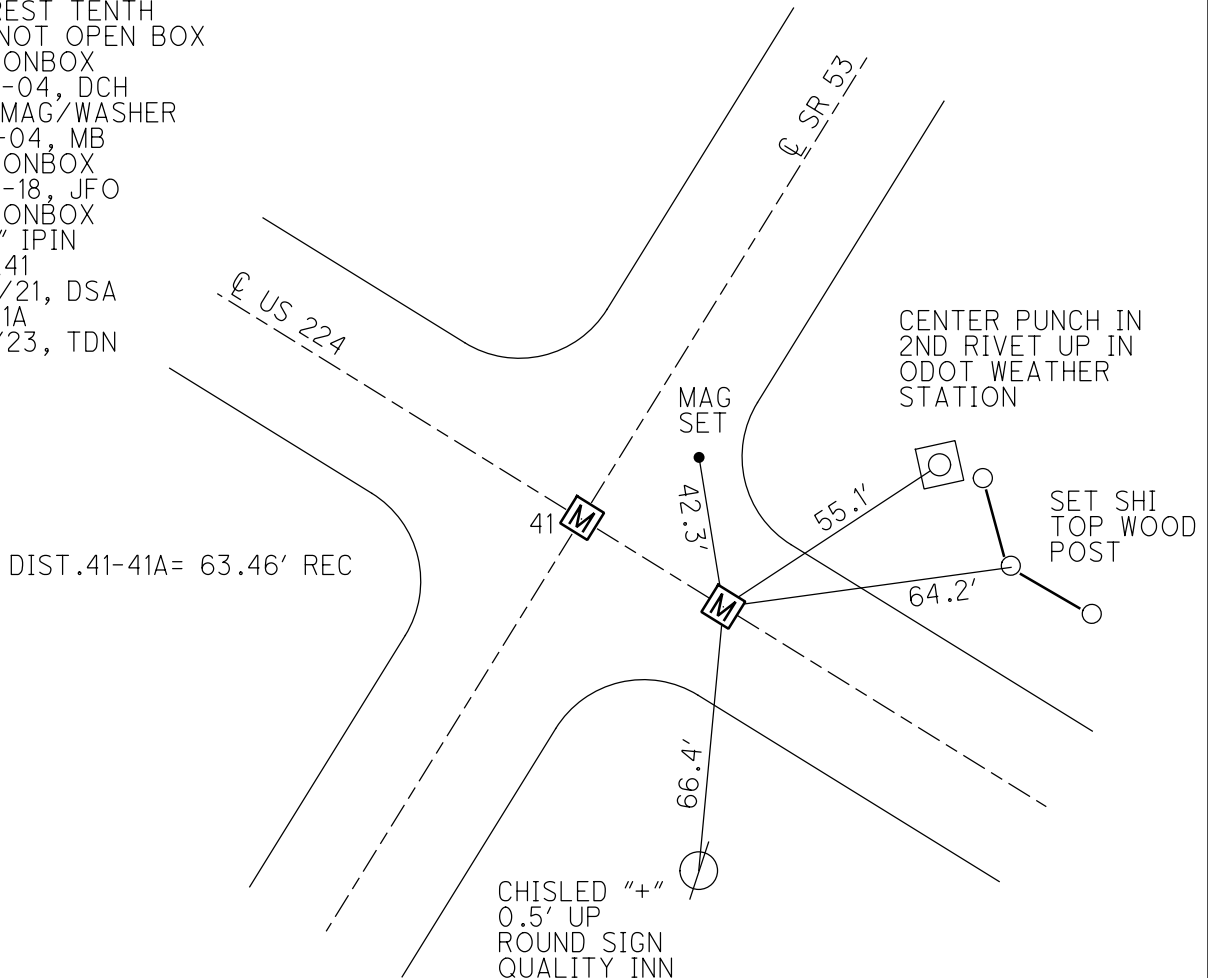
TYPE MONUMENT MONBOX W/1" IPIN
 ON SURFACE - ~~BELOW~~ ON
 OFFSET ☉ PAVEMENT ON LT : RT
- TO - EDGE PAVEMENT
 STATION: 633+62

HORZ.DATUM: NAD83 (2011) GEOID: NAVD88 2018
 GRID: NORTHING: 521673.884 EASTING: 1775344.760



RECORD: P.T.
 STA 91+67.22
 ALL TIES TO
 NEAREST TENTH
 DID NOT OPEN BOX
 FD MONBOX
 4-26-04, DCH
 SET MAG/WASHER
 8-17-04, MB
 FD MONBOX
 12-17-18, JFO
 FD MONBOX
 W/ 1" IPIN
 REFA41
 8/18/21, DSA
 REF41A
 9/8/23, TDN

SENECA LDP:
 N: 290351.248
 E: 150032.139



O.D.O.T. DISTRICT 2 SURVEY OFFICE (USE ONLY)

PERSONNEL

REFERENCE NO. 41 A

SHEET 6 OF 12

NOTES HUNFER DATE 4/26/04

H.C. HOOKER WEATHER SUNNY

R.C. HOMAN TEMP. 55°

HUSS, ARMS

DWG BY MILLER PID 110482

ROUTE US 224

COUNTY SENECA

TOWNSHIP HOPEWELL

SECTION 25

T 2 N R 14 E

TYPE MONUMENT MONBOX

ON SURFACE - ~~BELOW~~ ON

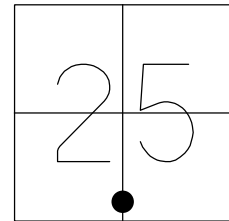
OFFSET Q PAVEMENT ON LT : RT

- TO - EDGE PAVEMENT

STATION: 633+62

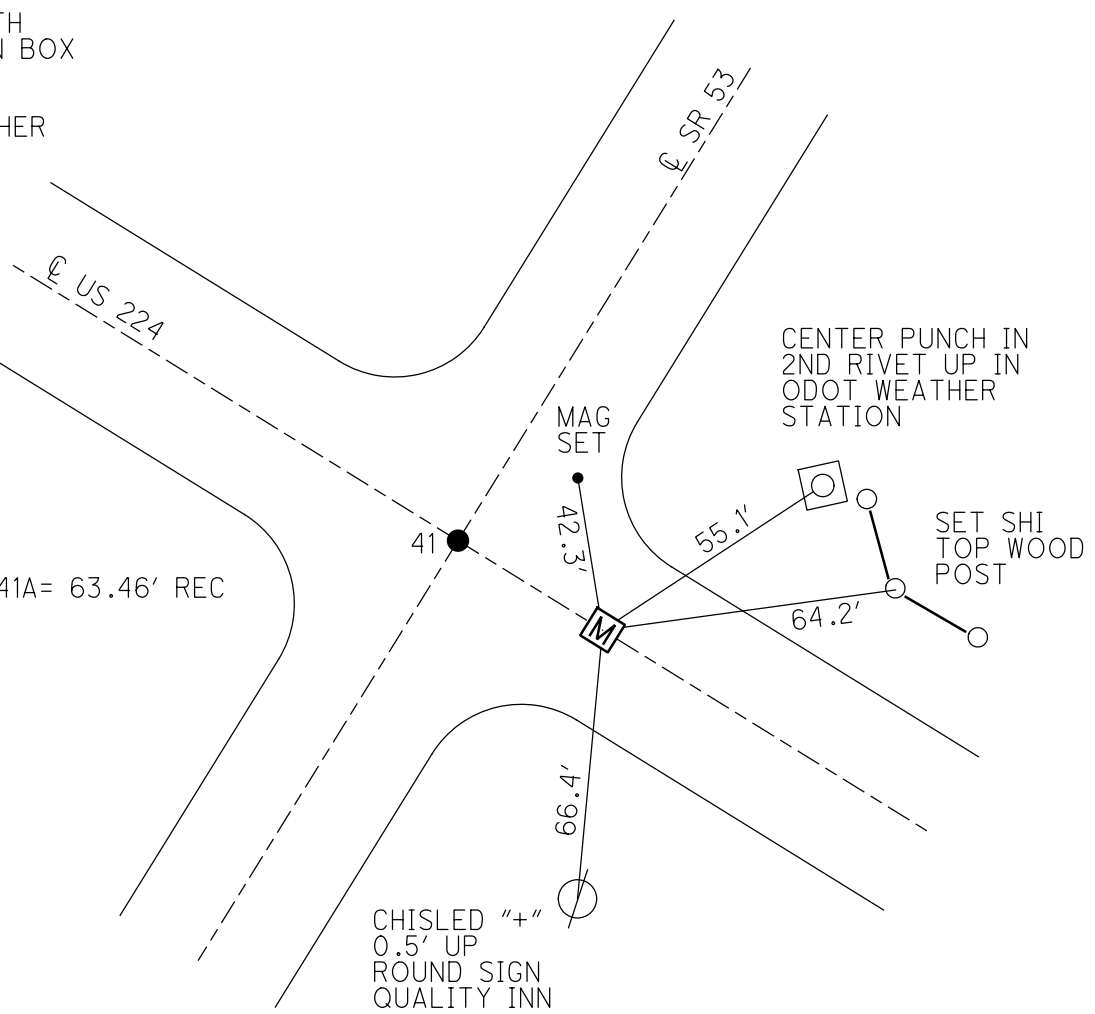
HORIZ.DATUM: NAD83 (2011) GEOID: 2012A

GRID: NORTHING: 521673.884 EASTING: 1775344.760



RECORD: P.T.
 STA 91+67.22
 ALL TIES TO
 NEAREST TENTH
 DID NOT OPEN BOX
 FD MONBOX
 4-26-04, DCH
 SET MAG/WASHER
 8-17-04, MB
 FD MONBOX
 12-17-18, JFO
 FD MONBOX
 W/ 1" IPIN
 REFA41
 8/18/21, DSA

DIST.41-41A= 63.46' REC



CHISLED "+"
 0.5' UP
 ROUND SIGN
 QUALITY INN

O.D.O.T. DISTRICT 2 SURVEY OFFICE (USE ONLY)

PERSONNEL

REFERENCE NO. 41 A

SHEET 6 OF 12

NOTES HUNFER

DATE 4/26/04

ROUTE US 224

H.C. HOOKE

WEATHER SUNNY

COUNTY SENECA

R.C. HOMAN

TEMP. 55°

TOWNSHIP HOPEWELL

HUSS, ARMS

SECTION 25

DWG BY MILLER PID 102819

T 2 N R 14 E

TYPE MONUMENT MONBOX

ON SURFACE - ~~BELOW~~ ON

OFFSET C PAVEMENT ON LT : RT

- TO - EDGE PAVEMENT

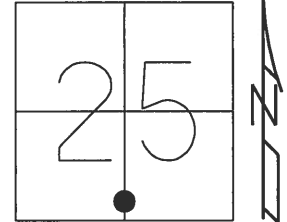
STATION: 633+62

HORIZ.DATUM: NAD83 (2011)

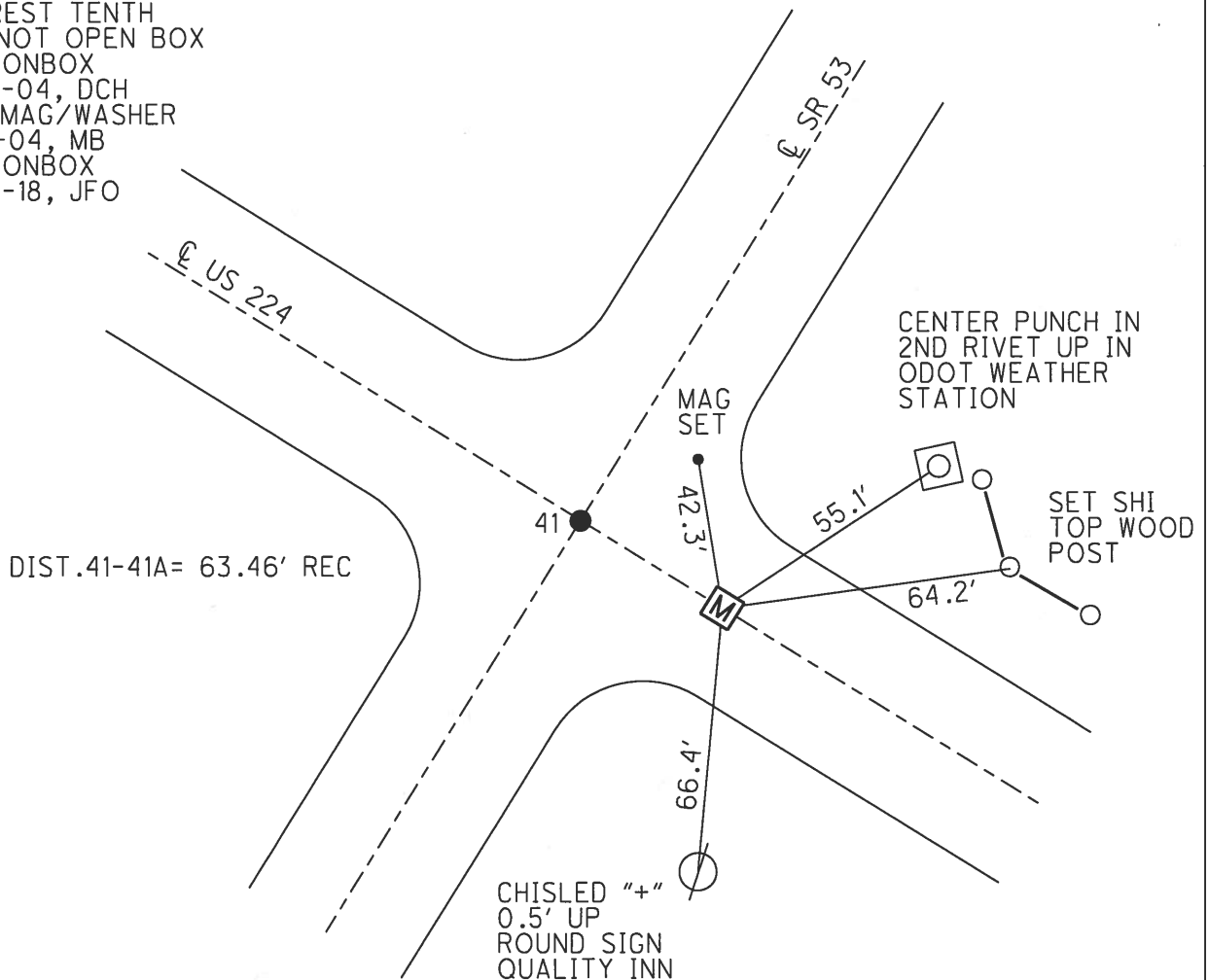
GEOID: 2012A

GRID: NORTHING: 521673.893

EASTING: 1775344.654



RECORD: P.T.
 STA 91+67.22
 ALL TIES TO
 NEAREST TENTH
 DID NOT OPEN BOX
 FD MONBOX
 4-26-04, DCH
 SET MAG/WASHER
 8-17-04, MB
 FD MONBOX
 12-17-18, JFO



O.D.O.T. DISTRICT 2 SURVEY OFFICE

PERSONNEL

REFERENCE NO. 41-A

SHEET 19 OF 26

NOTES NUHFER
 H.C. HOOKER
 R.C. HOMAN
HUSS
ARMS

DATE 4-26-04
 WEATHER SUNNY
 TEMP. 55°

ROUTE US 224
 COUNTY SENECA
 TOWNSHIP HOPEWELL
 SECTION 25
T 2 N R 14 E

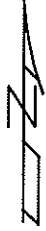
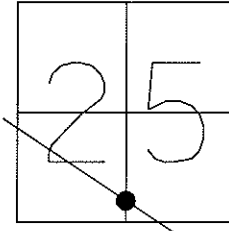
TYPE MONUMENT MONUMENT BOX

ON SURFACE ~~-BELOW-~~ ON

~~LEFT~~ - Q PAV'T - ~~RIGHT~~ ON

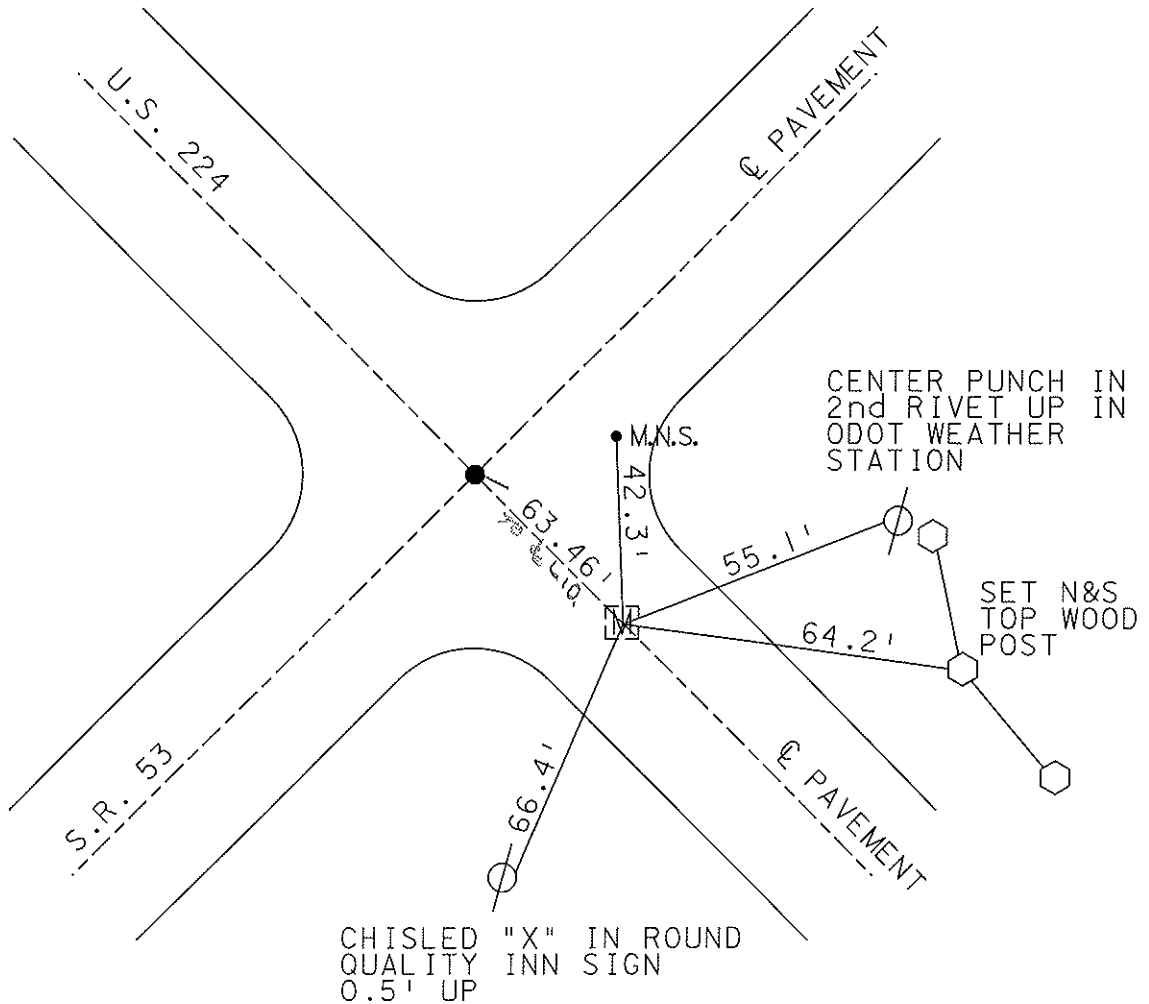
TO EDGE PAVEMENT

S.L.M. 633+62



P.T. 91467.22
 ALL TIES TO NEAREST TENTH
 D.D NOT OPEN BOX

SET MAG NAIL
 & WASHER
 8-17-04
 MB



O.D.O.T. DISTRICT 2 SURVEY OFFICE

PERSONNEL

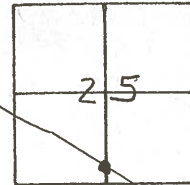
REFERENCE NO. 41-A SHEET OF

NOTES R. Cheney
 H.C. R. BARbone
 R.C. J. Apple
R. Feyman

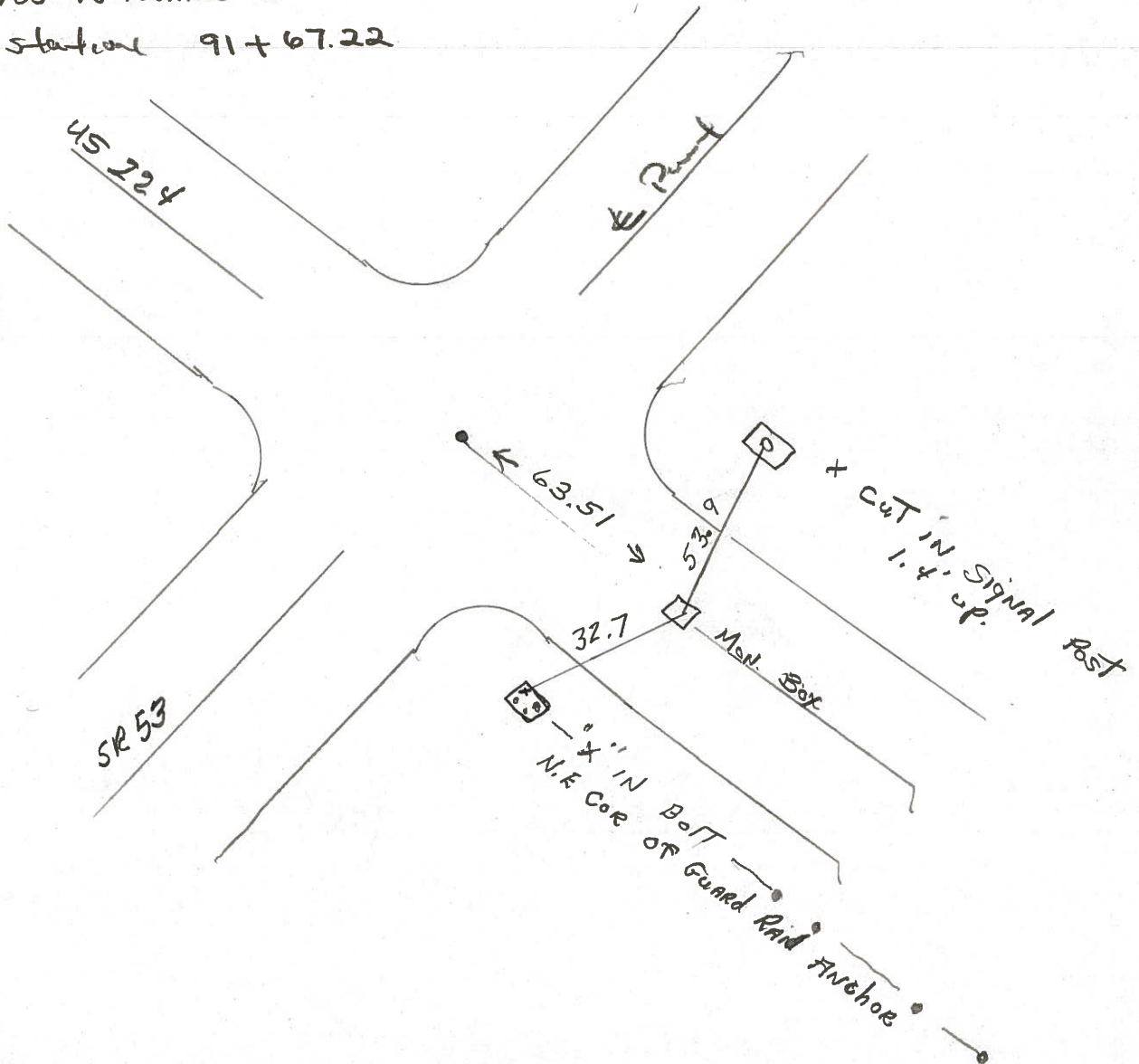
DATE 11-8-91
 WEATHER SUNNY
 TEMP. 20°

ROUTE 224
 COUNTY Seneca
 TOWNSHIP Hopewell
 SECTION 25
T2 N R 14 E

TYPE MONUMENT Box
 ON SURFACE - ~~BELOW~~
~~LEFT - C. PAV'T. - RIGHT~~
 TO EDGE PAVEMENT
 S.L.M. 633+62



P.T.
 All Ties To Nearest Tenth
 Plan station 91+67.22



| PERSONNEL | TITLE | PERSONNEL | TITLE | COUNTY | DATE |
|-------------|-------------------------|-------------|-------|---------------------|--------------|
| Schneider | | | | Seneca | 4-20-71 |
| Mosser | | | | S. R. U.S. 224 | WEATHER Fair |
| Barbour | | | | SEC. Tiffin By-Pass | TEMP. 60° |
| Geyman | | | | | |
| DESCRIPTION | Ties for Control Points | | | JOB NO. | |
| | LEFT | CENTER LINE | RIGHT | | |

$$\begin{array}{r} 541 \times 95 \\ 158 \times 61 \\ \hline 700 \times 54 \end{array}$$

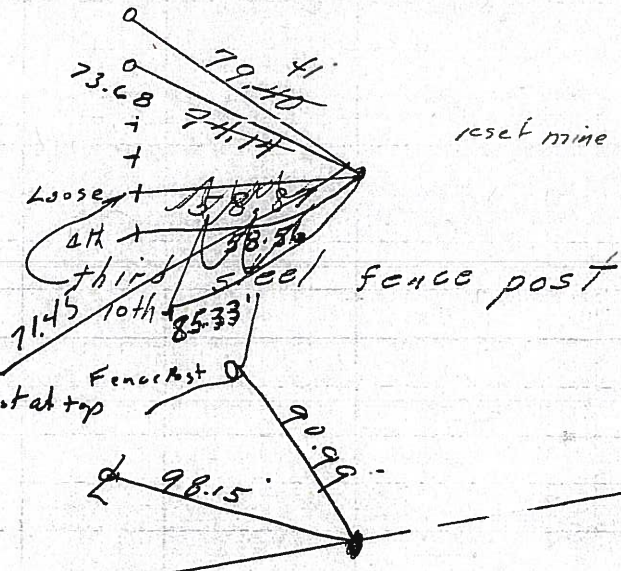
N&S on top of wood fence posts

43

7/2/73
 P.C.
 158+61.27
 Found P.K. Nail
 on top

8587

2nd best one → Galv. steel post at top
 wly of wood post
 4/20/84 sunny 47°
 Fd P.K. on surface



4/20/84 sunny 47°
 reset mine spr ✓ 10/25/73

Co. Rd. #19 South

42

125+34.1

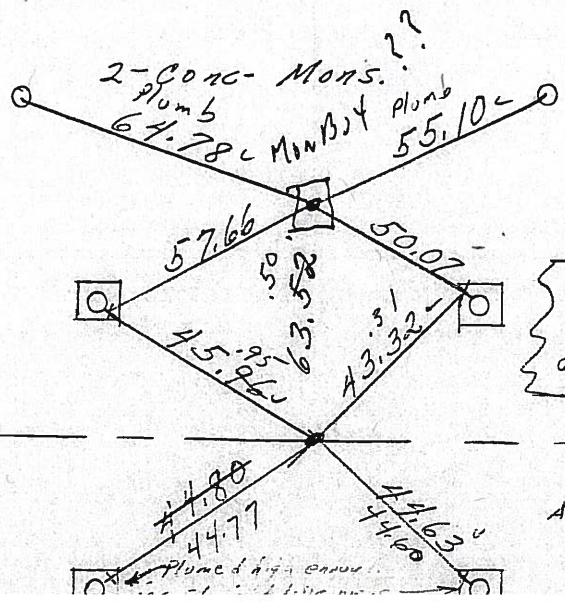
8586

no points shown

41-A

7/2/73
 P.T.
 91+67.22 ✓
 P.K. Nail on top

8585



reset mine spks
 10/25/73

"X" on conc. bases of Light Poles.

S.R. #53 South

41

91+03.70
 R.R. spk. 2" down ✓

8584

Also 4 masonry nails
 x-ties 8" ± off point

| PERSONNEL | TITLE | PERSONNEL | TITLE | COUNTY | DATE | WEATHER | TEMP. |
|-----------|-------|-----------|-------|----------------|---------|---------|-------|
| Schneider | | | | Seneca | 4-20-71 | Fair | 60° |
| Mosser | | | | U.S. 221 | | | |
| Barbour | | | | Tiffin By-Pass | | | |
| Geyman | | | | | | | |

DESCRIPTION Ties for Control Points

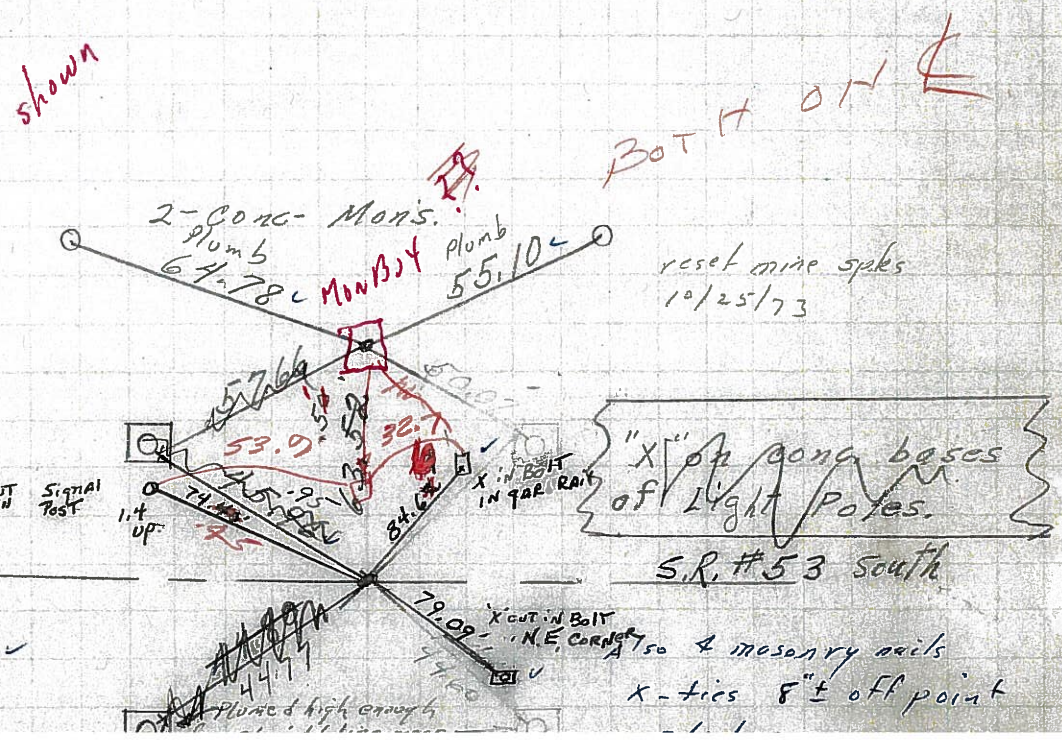
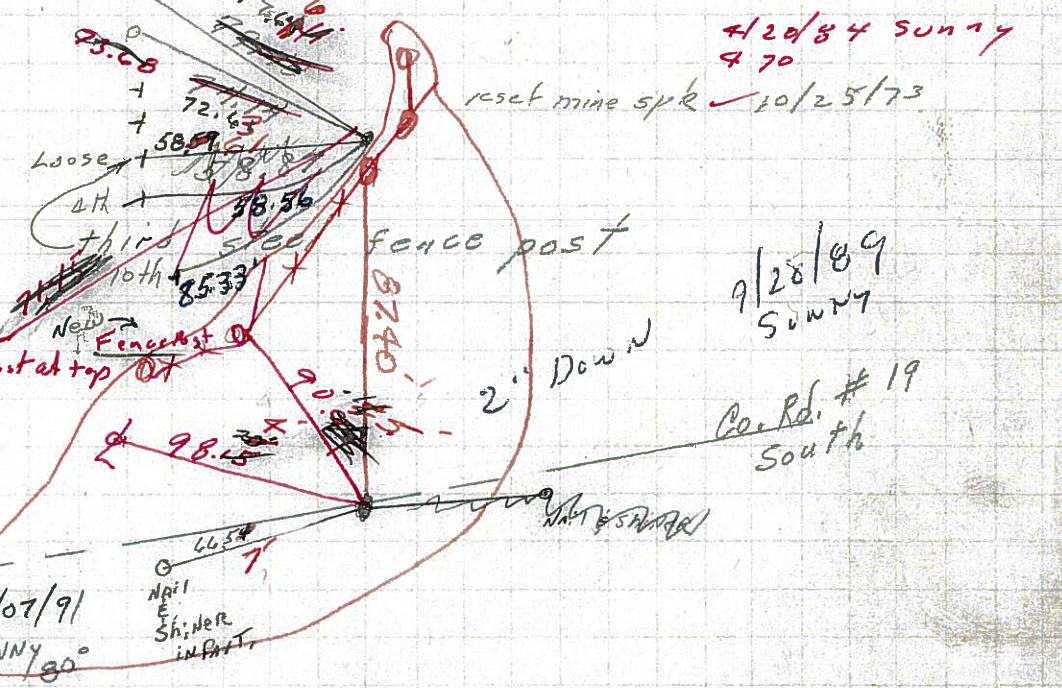
| LEFT | CENTER LINE | RIGHT | JOB NO. |
|-------------|--------------------------------|-------|---------|
| SET PK/WASH | 11-8-91 20° | CH 17 | |
| OH Q | | B.H.C | |
| 24' PAU'T. | | E-RL | |
| | | G-P | |
| 6/07/91 80° | N&S on top of wood fence posts | | |
| | New | | |

00+55.9
7/2/73
P.C.
158+61.27
125 34
Found P.K. Nail
on top
633+27
667 28.9 **8587**
2nd beat one → Galv. steel post at top
wly of wood post
4/20/84 sunny 47°
Fd P.K. on surface

42
125+34.1
91 67.2
330 66.9
633 62
667+28.9 **8586**
Co. Rd. #19

41-A
7/2/73
P.T.
91+67.22 ✓
P.K. Nail on top
632.98
64
62
8585
Signal Post
114 up.

41
91+03.70
88
R.R. spk. 2" down ✓
622+46
62
8584



| PERSONNEL | TITLE | PERSONNEL | TITLE | COUNTY | DATE | WEATHER |
|-----------|-------|-----------|-------|---------------------|-----------|---------|
| Schneider | | Zahn | | Saratoga | 8-21-62 | Fair |
| Hawk | | Schwartz | | S. R. #224 | | |
| Mosser | | | | SEC. 10.67 to 14.76 | TEMP. 80° | |
| Snider | | | | 4.09 Mi. | T-35 | |

DESCRIPTION Ties for Control Points JOB NO. 02524

43

41-A

41

40

39

