

O.D.O.T. DISTRICT 2 SURVEY OFFICE (USE ONLY)

PERSONNEL

REFERENCE NO. 42

SHEET 7 OF 12

NOTES ASTON

DATE 9/8/23

ROUTE US 224

H.C. NIESE

WEATHER DRIZZLE

COUNTY SENECA

R.C. ASTON

TEMP. 66°

TOWNSHIP HOPEWELL

SECTION 36

DWG BY RHOADES PID R/W

T 2 N R 14 E

TYPE MONUMENT MAG/WASHER

ON SURFACE - ~~BELOW~~ ON

OFFSET Q PAVEMENT ON LT : RT

- TO - EDGE PAVEMENT

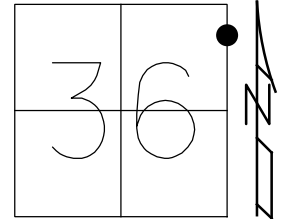
STATION: 667+28.9

HORZ.DATUM: NAD83 (2011)

GEOID: NAVD88 2018

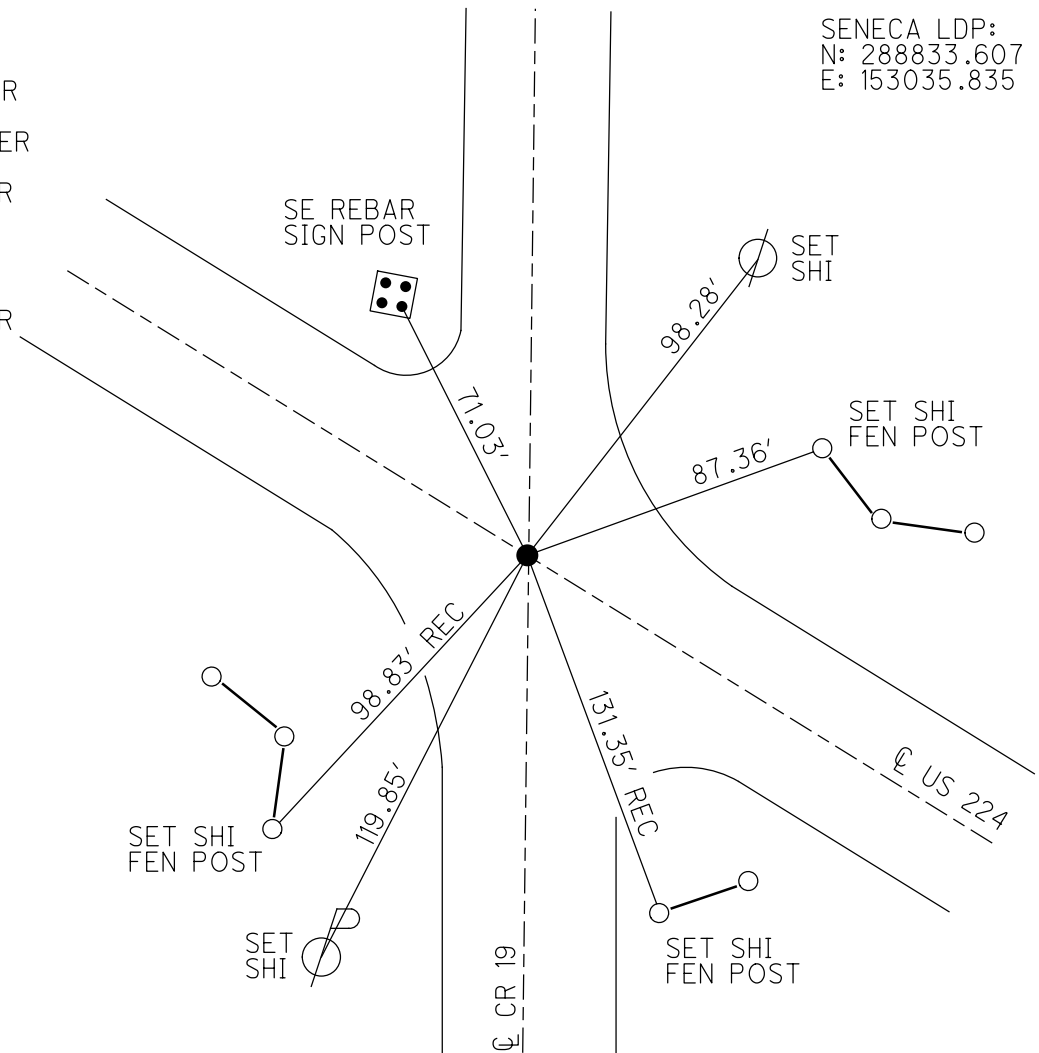
GRID: NORTHING: 520134.068

EASTING: 1778336.810



RECORD:
 STA. 125+34.1
 FD P.K./WASHER
 4-27-04, DCH
 SET MAG/WASHER
 8-17-04, MB
 FD MAG/WASHER
 REF42
 5-30-17, JFO
 UNCOVERED
 12-17-18, JFO
 FD MAG/WASHER
 8/18/21, DSA
 REF42
 9/8/23, TDN

SENECA LDP:
 N: 288833.607
 E: 153035.835



O.D.O.T. DISTRICT 2 SURVEY OFFICE (USE ONLY)

PERSONNEL

REFERENCE NO. 42

SHEET 7 OF 12

NOTES RHOADES

DATE 5/30/17

ROUTE US 224

H.C. O'DONNELL

WEATHER SUNNY

COUNTY SENECA

R.C. POORE

TEMP. 72°

TOWNSHIP HOPEWELL

SECTION 36

DWG BY MILLER

PID 102819

T 2 N R 14 E

TYPE MONUMENT MAG/WASHER

ON SURFACE - ~~BELOW~~ ON

OFFSET ☉ PAVEMENT ON LT : RT

- TO - EDGE PAVEMENT

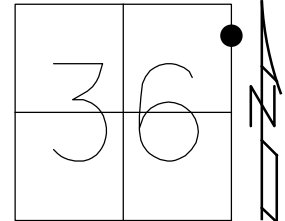
STATION: 667+28.9

HORZ.DATUM: NAD83 (2011)

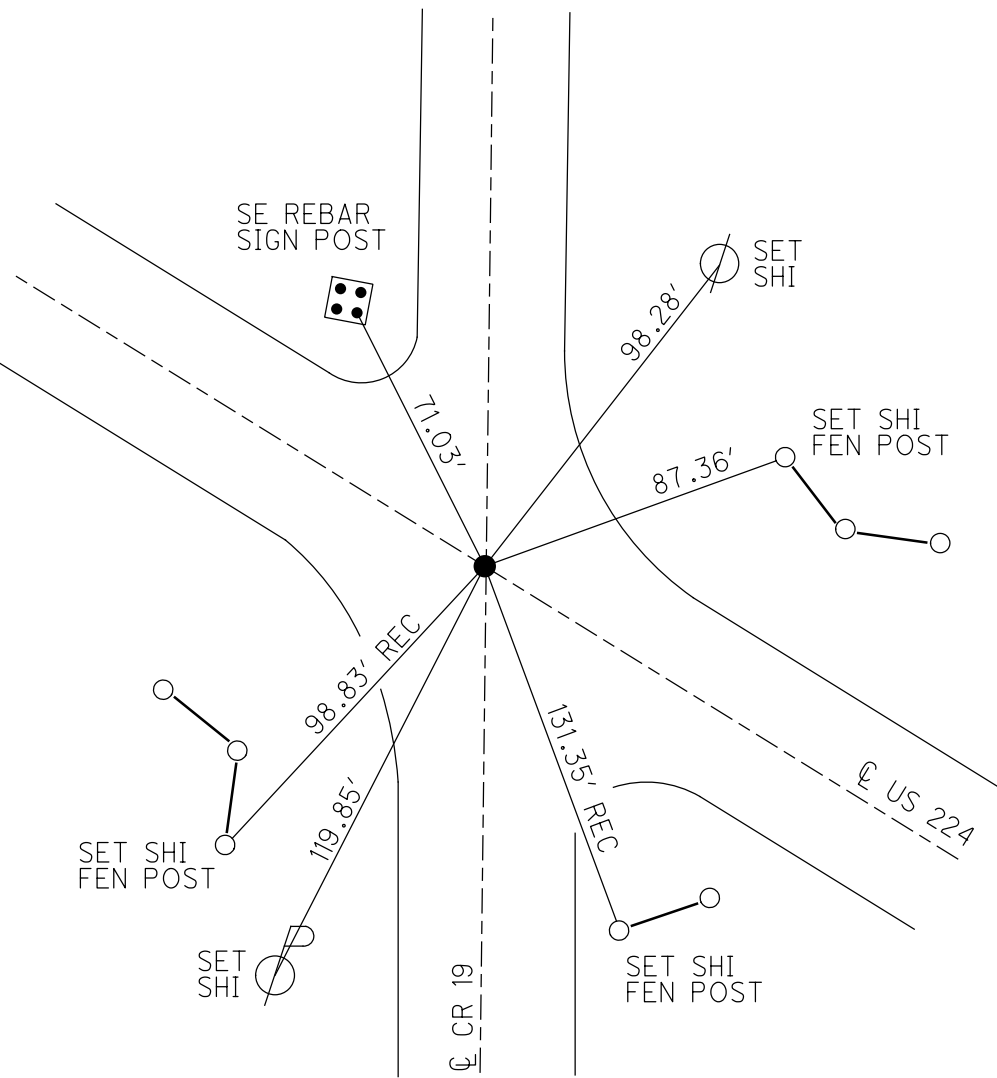
GEOID: 2012A

GRID: NORTHING: 520134.068

EASTING: 1778336.810



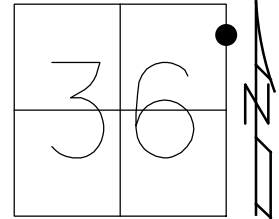
RECORD:
 STA. 125+34.1
 FD P.K./WASHER
 4-27-04, DCH
 SET MAG/WASHER
 8-17-04, MB
 FD MAG/WASHER
 REF42
 5-30-17, JFO
 UNCOVERED
 12-17-18, JFO
 FD MAG/WASHER
 8/18/21, DSA



O.D.O.T. DISTRICT 2 SURVEY OFFICE (USE ONLY)

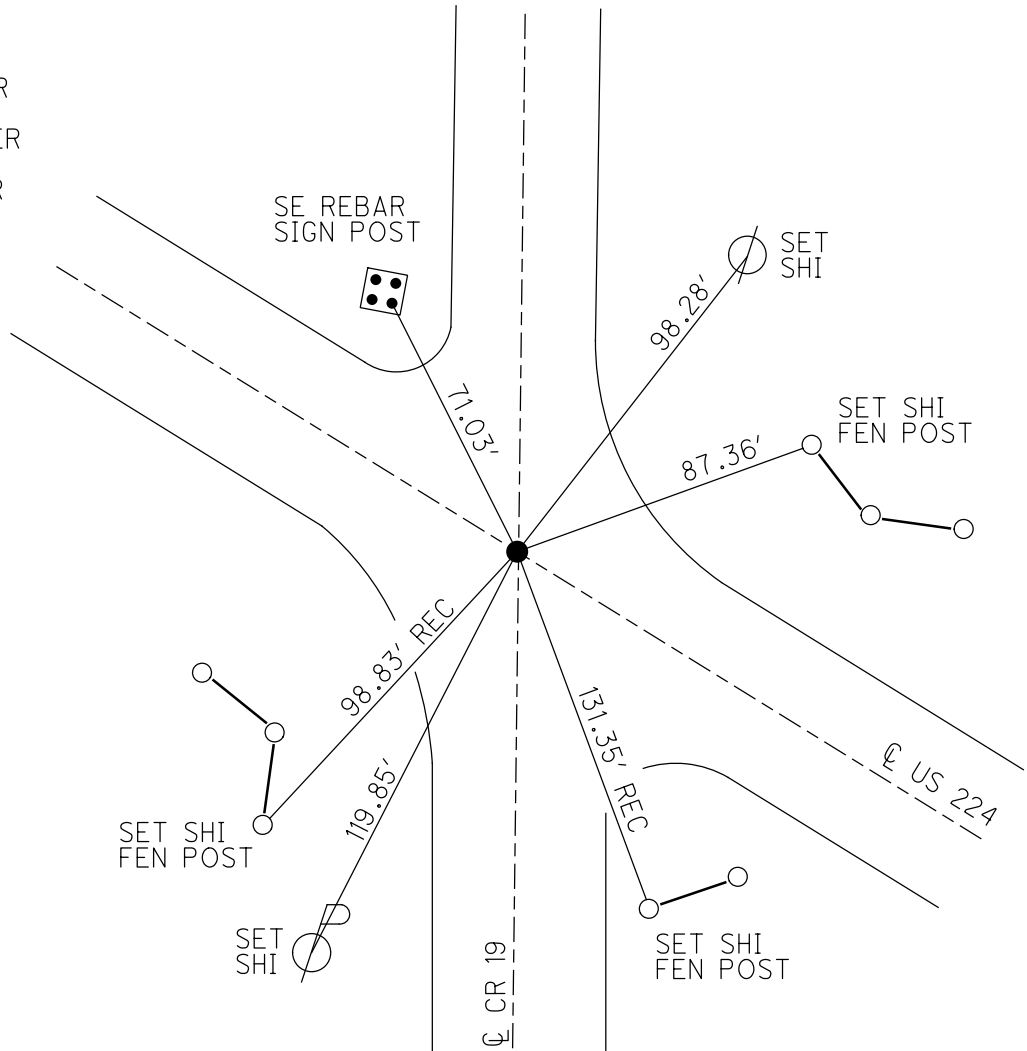
PERSONNEL _____ REFERENCE NO. 42 SHEET 7 OF 12
 NOTES RHOADES DATE 5/30/17 ROUTE US 224
 H.C. O'DONNELL WEATHER SUNNY COUNTY SENECA
 R.C. POORE TEMP. 72° TOWNSHIP HOPEWELL
 _____ SECTION 36
 DWG BY MILLER PID 102819 T 2 N R 14 E

TYPE MONUMENT MAG/WASHER
 ON SURFACE - ~~BELOW~~ ON
 OFFSET ☐ PAVEMENT ON LT : RT
- TO - EDGE PAVEMENT
 STATION: 667+28.9



HORIZ.DATUM: NAD83 (2011) GEOID: NAVD88 2012A
 GRID: NORTHING: 520134.068 EASTING: 1778336.810

RECORD:
 STA. 125+34.1
 FD P.K./WASHER
 4-27-04, DCH
 SET MAG/WASHER
 8-17-04, MB
 FD MAG/WASHER
 REF42
 5-30-17, JFO
 12-17-18, JFO



O.D.O.T. DISTRICT 2 SURVEY OFFICE

PERSONNEL

REFERENCE NO. 42

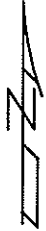
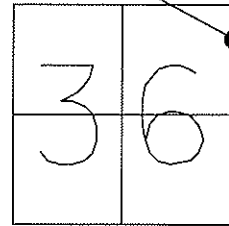
SHEET 20 OF 26

NOTES NUHFER
 H.C. HOOKER
 R.C. HOMAN
ARMS

DATE 4-27-04
 WEATHER CLOUDY
 TEMP. 48°

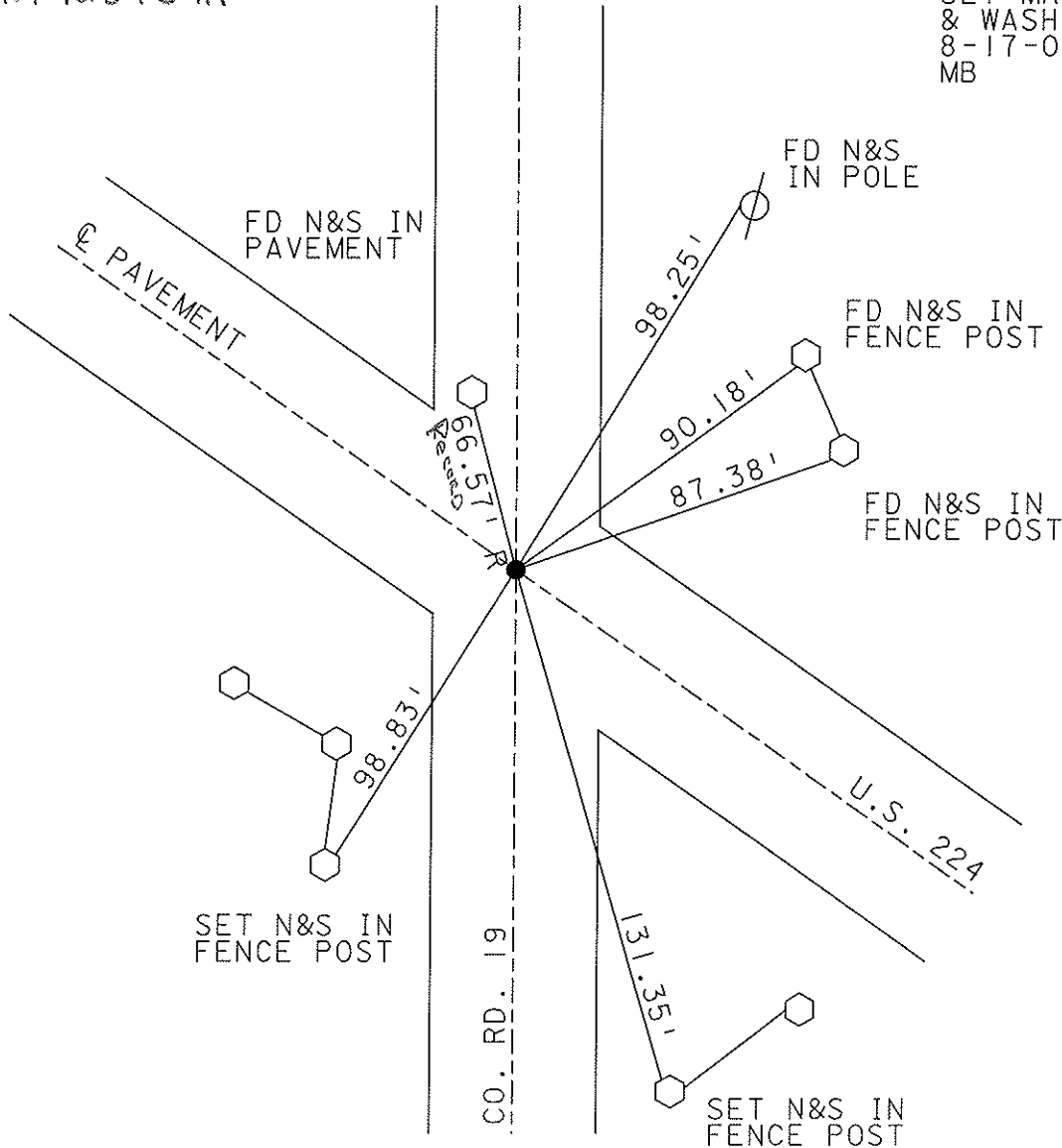
ROUTE US 224
 COUNTY SENECA
 TOWNSHIP HOPEWELL
 SECTION 36
T 2 N R 14 E

TYPE MONUMENT PK & WASHER
 ON SURFACE ~~- BELOW~~ ON
~~LEFT - C PAV'T - RIGHT~~ ON
TO EDGE PAVEMENT
 S.L.M. 667+28.9



PLAN Sta. 125+34.1

SET MAG NAIL
 & WASHER
 8-17-04
 MB



O.D.O.T. DISTRICT 2 SURVEY OFFICE

PERSONNEL

REFERENCE NO. 42

SHEET _____ OF _____

NOTES P. Cheney

H.C. R. BARBOUR

R.C. J. Ripple

R. Geyman

DATE 11-8-91

WEATHER SUNNY

TEMP. 20°

ROUTE 224

COUNTY SENECA

TOWNSHIP Hopewell

SECTION 36

T 2 N R 14 E

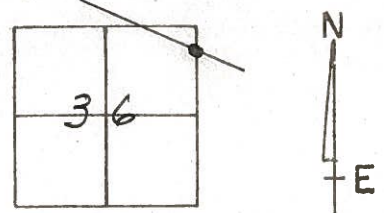
TYPE MONUMENT P.K. Washer

ON SURFACE - BELOW P.K. 3" Down

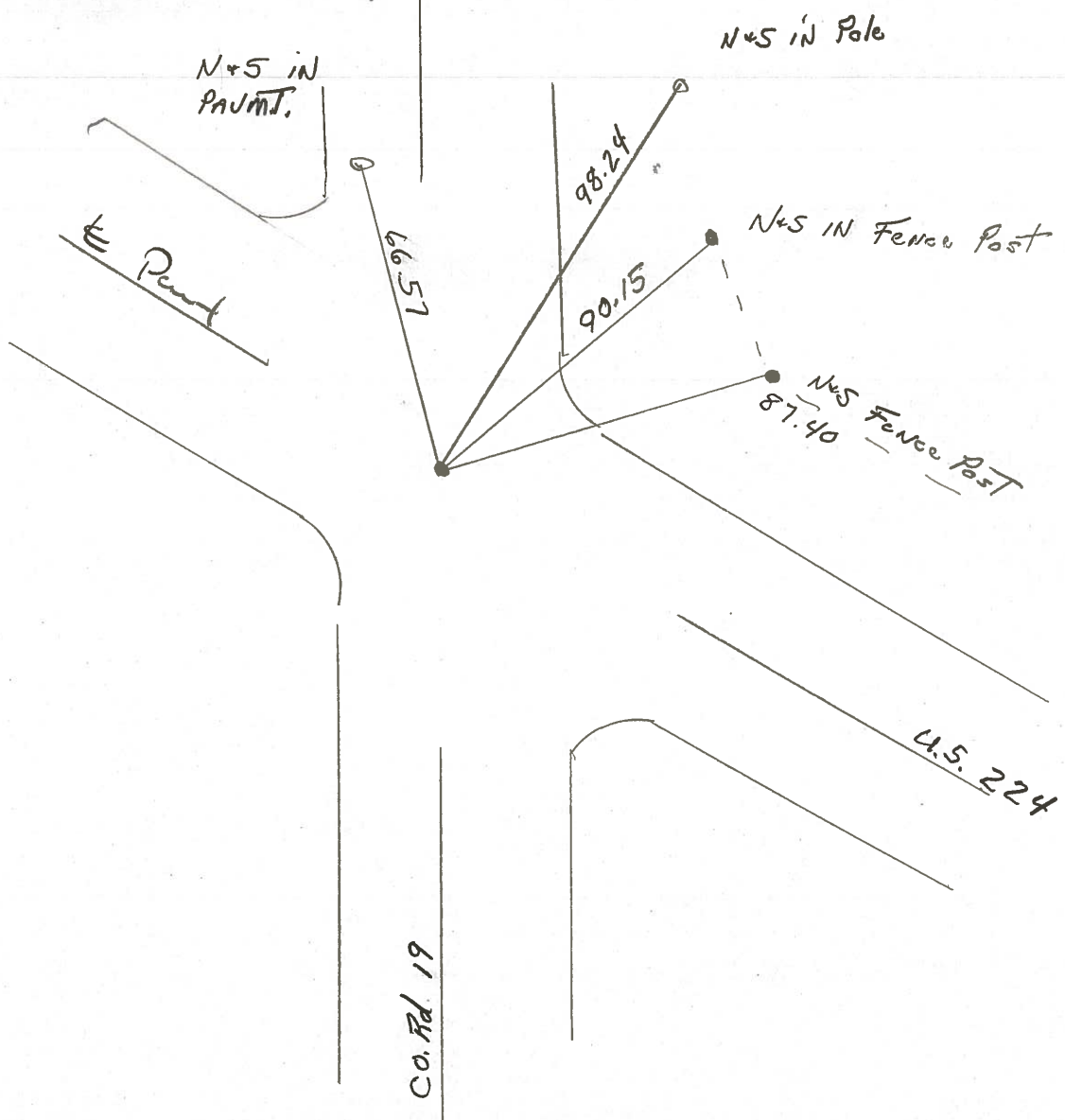
~~LEFT & PAV'T. - RIGHT~~

TO EDGE PAVEMENT

S.L.M. 667 + 28.9



PLAN station 125 + 34.1 ±



PERSONNEL	TITLE	PERSONNEL	TITLE	COUNTY	DATE
Schneider				Seneca	4-20-71
Mosser				S. R. U.S. 224	WEATHER Fair
Barbour				SEC. Tiffin By-Pass	TEMP. 60°
Geyman					
DESCRIPTION	Ties for Control Points			JOB NO.	
	LEFT	CENTER LINE	RIGHT		

$$\begin{array}{r} 541.95 \\ 1584.61 \\ \hline 7004.54 \end{array}$$

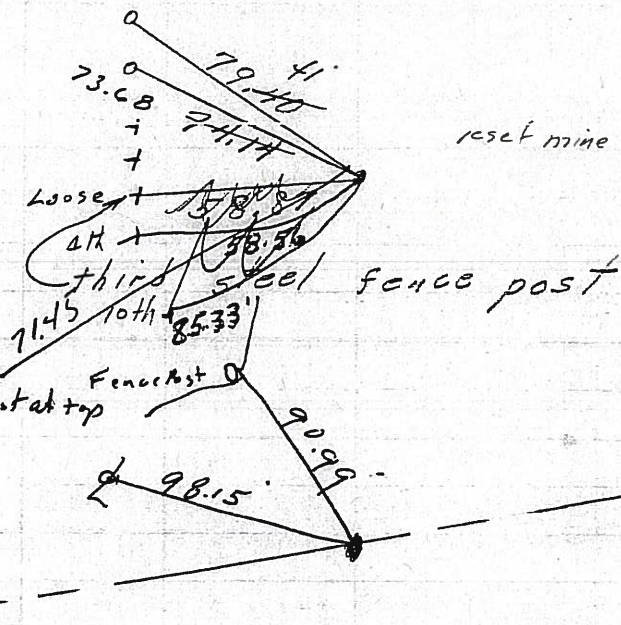
N&S on top of wood fence posts

43

7/2/73
 P.C.
 158+61.27
 Found P.K. Nail -
 on top

8587

2nd best one -> Galv. Steel post at top
 wly of wood post
 4/20/84 sunny 47°
 Fd P.K. on surface



4/20/84 sunny 47°
 reset mine spk 10/25/73

42

125+34.1

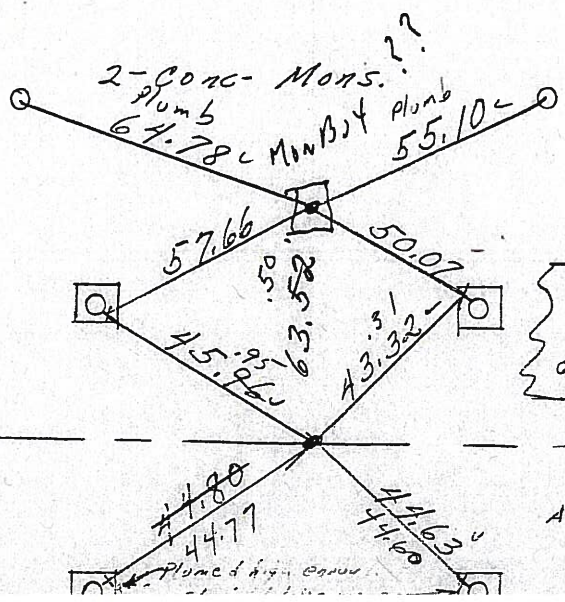
8586

no points shown

41-A

7/2/73
 P.T.
 91+67.22 ✓
 P.K. Nail on top

8585



reset mine spks
 10/25/73

"X" on conc. bases of Light Poles.

S.R. #53 South

41

91+03.70
 R.R. spk. 2" down ✓

Also 4 masonry nails
 x-ties 8" ± off point

115.51

PERSONNEL	TITLE	PERSONNEL	TITLE	COUNTY	DATE	WEATHER	TEMP.
Schneider				Seneca	4-20-71	Fair	60°
Mosser				U.S. 221			
Barbour				Tiffin By-Pass			
Geyman							

DESCRIPTION Ties for Control Points JOB NO. _____

00+55.9
 7/2/73
 P.C.
 158+61.27
 155 34
 Found P.K. Nail -
 on top
 33+27
 667 28.9
 2nd best one -
 wly of wood post
 4/20/84 sunny 47°
 Fd P.K. on surface

43

125+34.1
 91 67.2
 33+66.9
 633 62
 667+28.9
 Co. Rd. #19

42

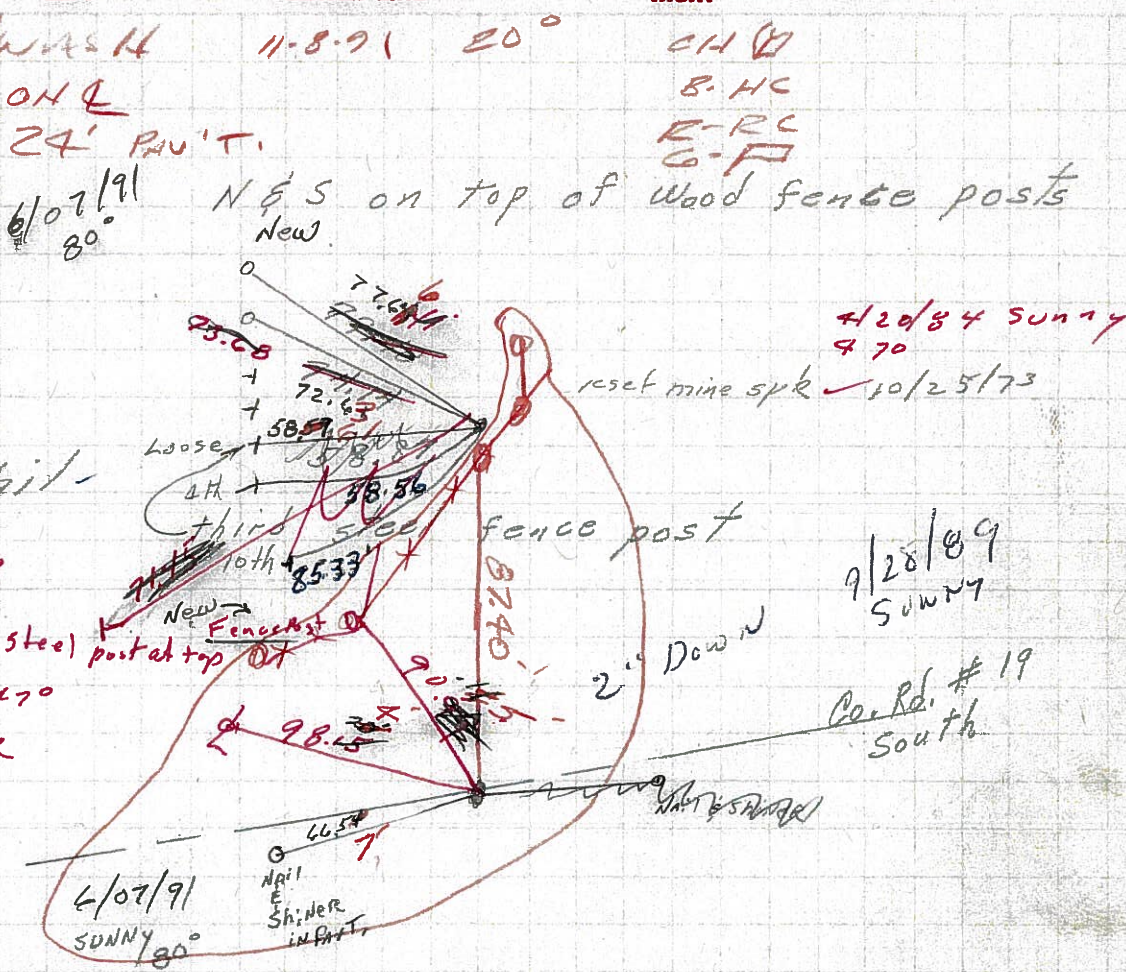
6/07/91 SUNNY 80°
 7/2/73
 P.T.
 91+67.22 ✓
 P.K. Nail on top
 8585

41-A

632.98
 64
 62
 8586
 Co. Rd. #19

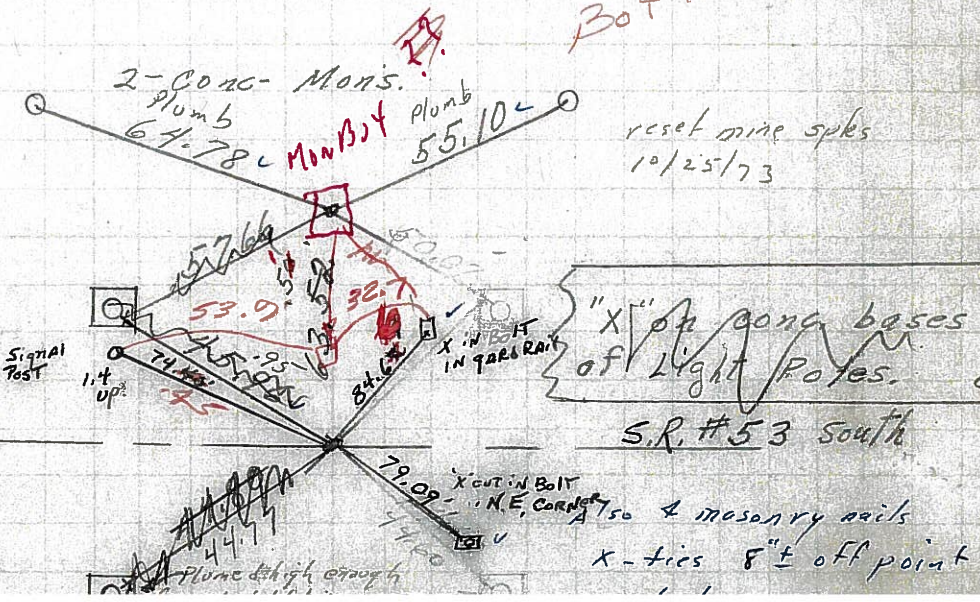
41

91+03.70
 80 51
 R.R. spk. 2" down ✓
 8581



no points shown

BOTH ON E



"X" of conc bases of Light Poles.
 S.R. #53 South

X-ties 8" ± off point