

O.D.O.T. DISTRICT 2 SURVEY OFFICE (USE ONLY)

PERSONNEL

REFERENCE NO. 43

SHEET 8 OF 12

NOTES RHOADES

DATE 5/30/17

ROUTE US 224

H.C. O'DONNELL

WEATHER CLOUDY

COUNTY SENECA

R.C. POORE

TEMP. 72°

TOWNSHIP CLINTON

DWG BY MILLER PID 102819

SECTION 31

T 2 N R 15 E

TYPE MONUMENT MAG/WASHER

ON SURFACE - ~~BELOW~~ ON

OFFSET C PAVEMENT 0.5' LT : ~~RT~~

12' TO RT EDGE PAVEMENT

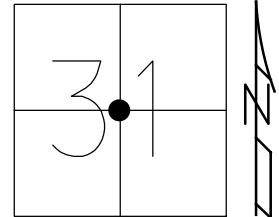
STATION: 700+55.9

HORZ. DATUM: NAD83 (2011)

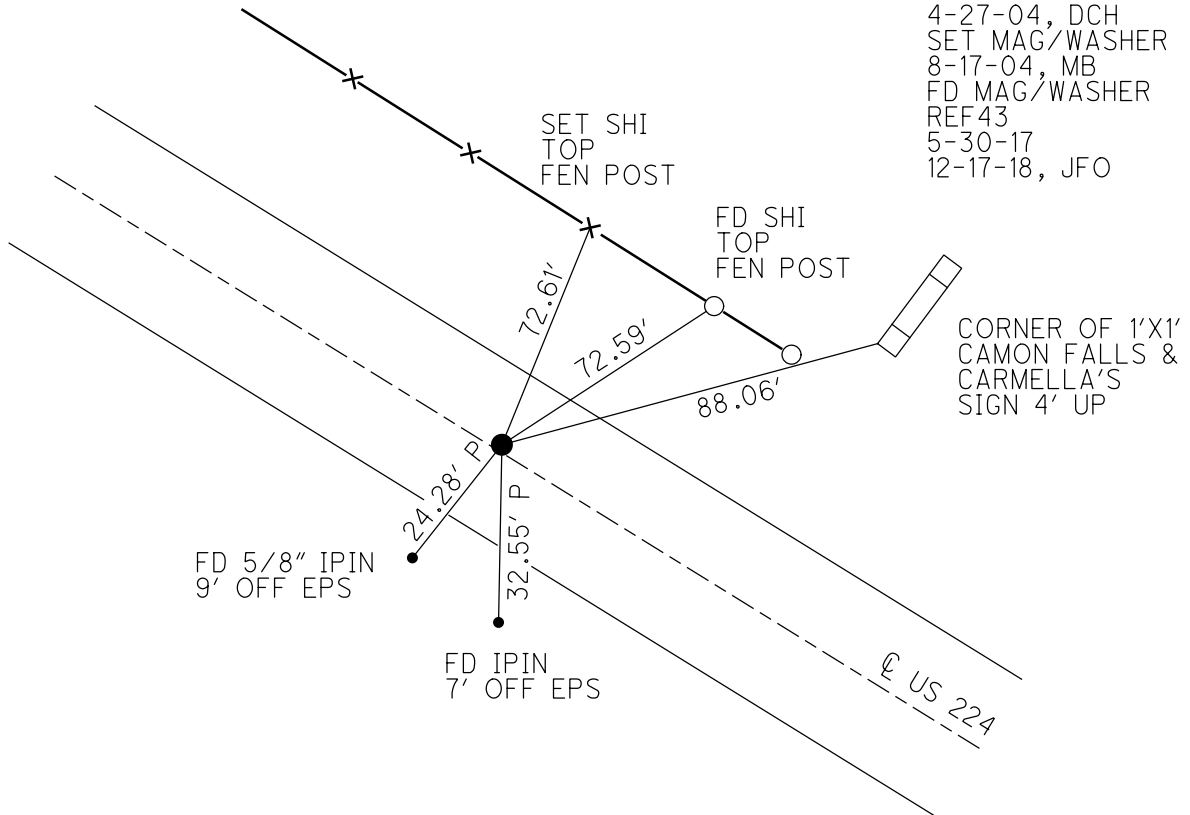
GEOID: NAVD88 2012A

GRID: NORTHING: 518611.673

EASTING: 1781295.349



RECORD: P.C.
 STA 158+61.27
 FD P.K./WASHER
 4-27-04, DCH
 SET MAG/WASHER
 8-17-04, MB
 FD MAG/WASHER
 REF43
 5-30-17
 12-17-18, JFO



O.D.O.T. DISTRICT 2 SURVEY OFFICE

PERSONNEL

REFERENCE NO. 43

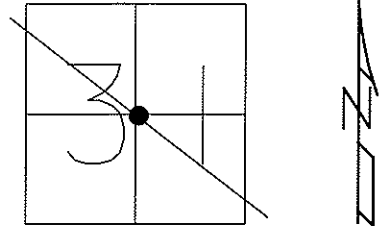
SHEET 21 OF 26

NOTES NUHFER
 H.C. HOOKE
 R.C. HOMAN
ARMS

DATE 4-27-04
 WEATHER CLOUDY
 TEMP. 40°

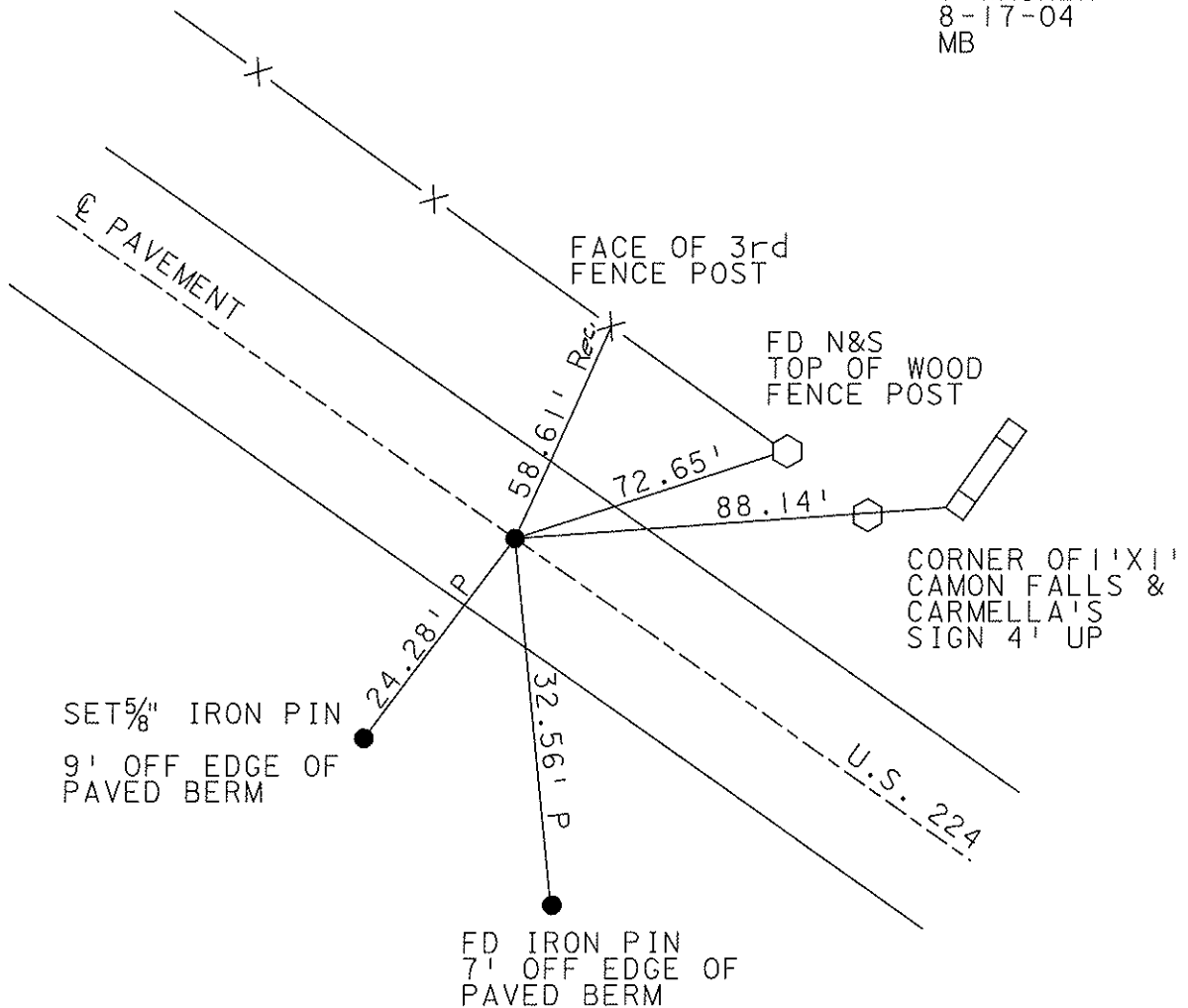
ROUTE US 224
 COUNTY SENECA
 TOWNSHIP CLINTON
 SECTION 31
T 2 N R 15 E

TYPE MONUMENT PK & WASHER
 ON SURFACE ~~BELOW~~ ON
 LEFT ~~C PAVT~~ ~~RIGHT~~ 0.5' LT
12' TO RT. EDGE PAVEMENT
 S.L.M. 700+55.9



P.C. 158+61.27

SET MAG NAIL
& WASHER
8-17-04
MB



O.D.O.T. DISTRICT 2 SURVEY OFFICE

PERSONNEL

REFERENCE NO. 43

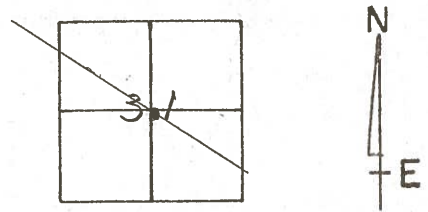
SHEET OF

NOTES R. Cheney
H.C. R. BARBOUR
R.C. J. Ripple
R. Geyman

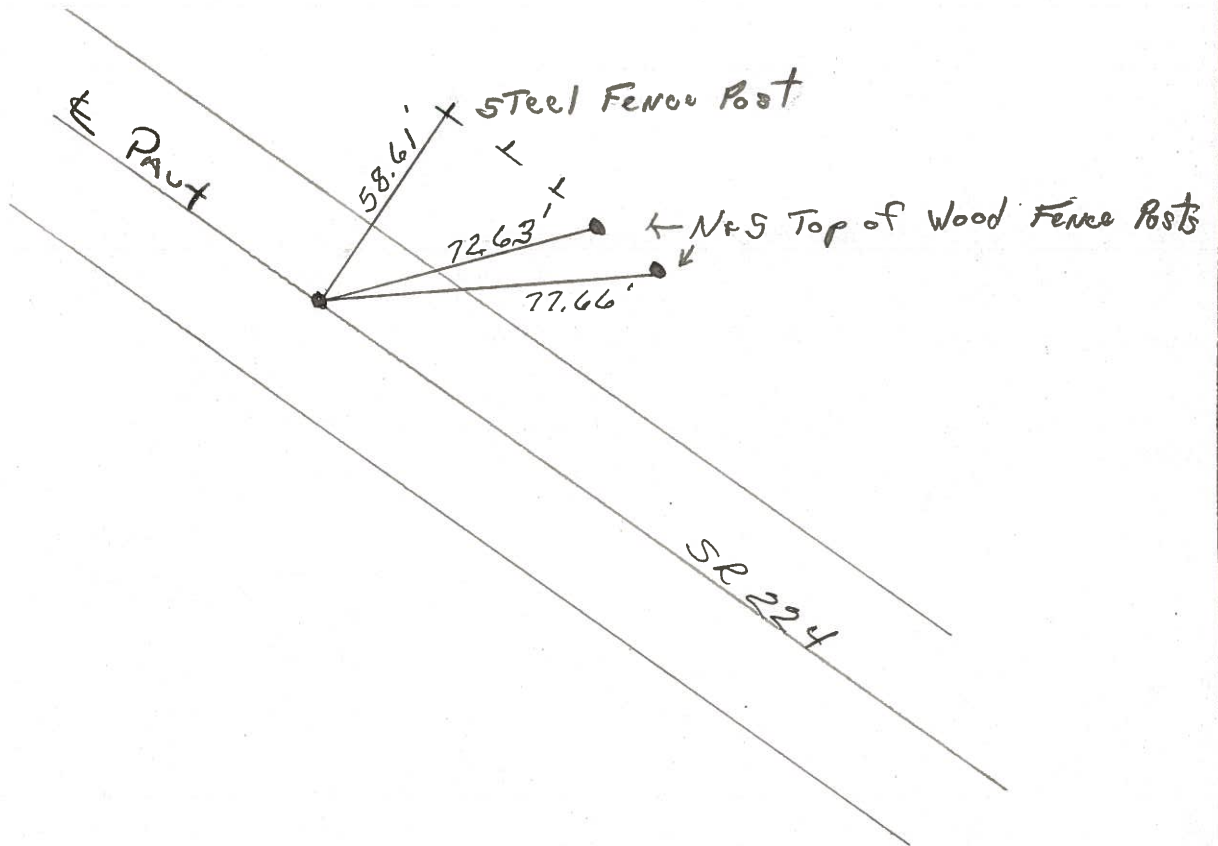
DATE 11-8-91
WEATHER SUNNY
TEMP. 20'

ROUTE 224
COUNTY Seneca
TOWNSHIP CLINTON
SECTION 31
T2 N R 15 E

TYPE MONUMENT ST P.K. Washer
~~ON SURFACE - BELOW~~ P.K. Washer
~~LEFT - C. PAV'T. - RIGHT~~
12 TO 12 EDGE PAVEMENT
S.L.M. 700 + 55.9



P.C.



PERSONNEL	TITLE	PERSONNEL	TITLE	COUNTY	DATE
Schneider				Seneca	4-20-71
Mosser				S. R. U.S. 22A	WEATHER Fair
Barbour				SEC. Tiffin By-Pass	TEMP 60°
Geyman					
DESCRIPTION	Ties for Control Points			JOB NO.	
	LEFT	CENTER LINE	RIGHT		

541 x 95
15846
700 x 54

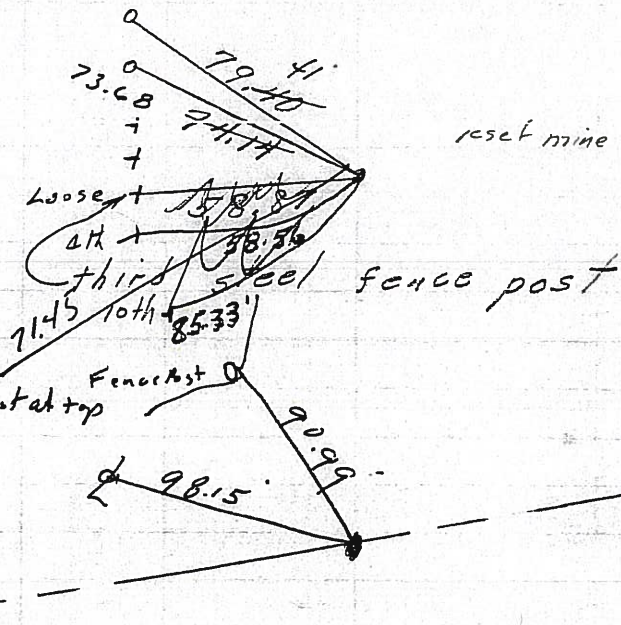
N&S on top of wood fence posts

43

7/2/73
P.C.
158+61.27
Found P.K. Nail
on top

8587

2nd best one → Galv. Steel post at top
w/ly of wood post
4/20/84 sunny 47°
Fd P.K. on surface



4/20/84 sunny 47°
reset mine spk 10/25/73

42

125+34.1

8586

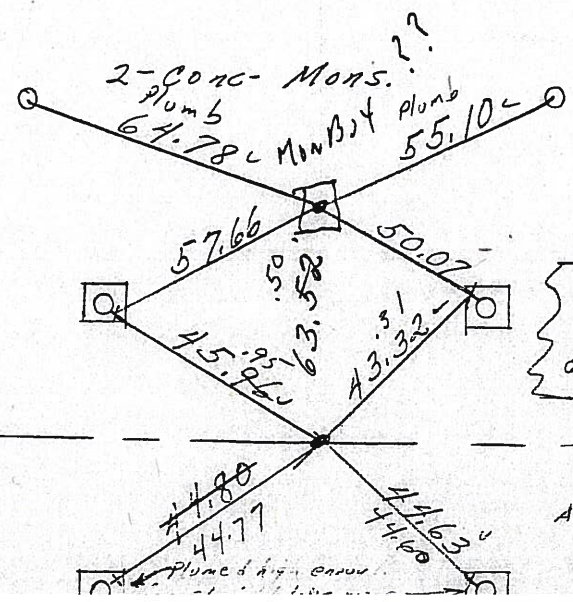
Co. Rd. #19
South

no points shown

41-A

7/2/73
P.T.
91+67.22 ✓
P.K. Nail on top

8585



reset mine spks
10/25/73

"X" on conc. bases
of Light Poles.

S.R. #53 South

41

91+03.70
P.R. spk. 2" down

Also 4 masonry nails
x-ties 8" ± off point

15524

PERSONNEL TITLE PERSONNEL TITLE

Schneider

COUNTY Seneca

DATE 4-20-71

Mosser

S. R. U.S. 221

WEATHER Fair

Barbour

SEC. Tiffin By-Pass

TEMP. 60°

Geyman

DESCRIPTION Ties for Control Points

JOB NO.

LEFT

CENTER LINE

RIGHT

SET PK/WASH

11-8-91 20°

CH 10

ON Q

B. HC

24' PAV'T.

R-RC

G-F

541x95
158x61
700x54

6/07/91
80°

N & S on top of wood fence posts
New.

00+55.9

7/2/73

P.C.

43

158+61.27

Found P.K. Nail

on top
633+27
667+28.9

8587

2nd best one - Galv steel post at top
w/ly of wood post

4/20/84 sunny 47°

Fd P.K. on surface

42

125+34.1

91 67.2

633+66.9

633+62

667+28.9

8586

Co. Rd. #19

6/07/91 sunny 80°

no points shown

41-A

P.T.

91+67.22 ✓

P.K. Nail on top

8585

1 1/4 up
Signal Post

2-CONC. MONS.

Plumb

64.78

MIN. BOLT

Plumb

55.10

reset mine spls
10/25/73

BOTH ON

633+98
64
62

41

91+03.70

88 51

R.R. spk. 2" down ✓

0501

1 1/4 up
Signal Post

74.4
75

79.09

79.09

79.09

79.09

79.09

X CUT IN BOLT
IN 90° CORNER

X CUT IN BOLT
N.E. CORNER

X CUT IN BOLT
N.E. CORNER

X CUT IN BOLT
N.E. CORNER

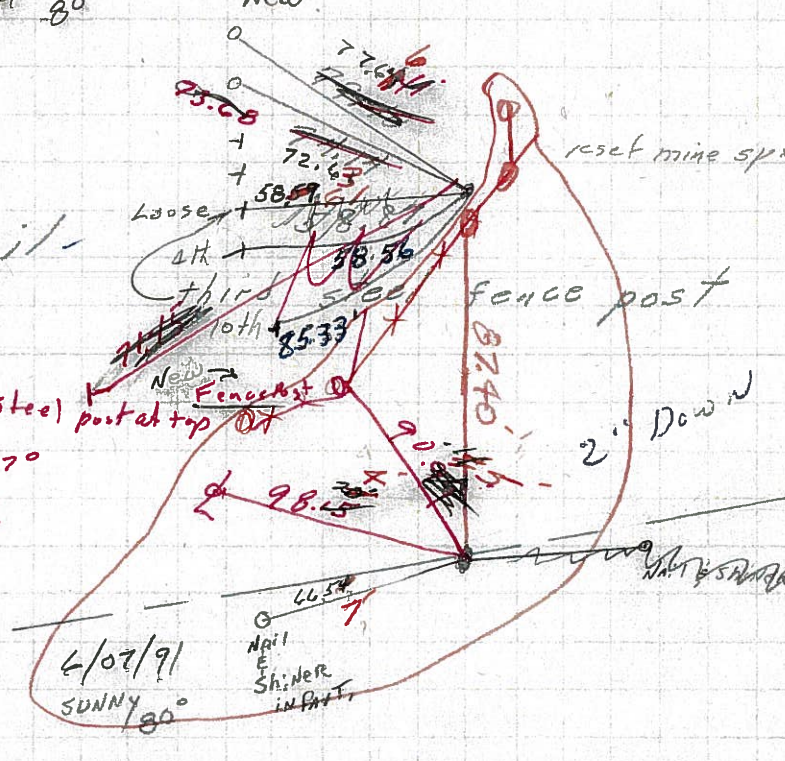
X CUT IN BOLT
N.E. CORNER

X CUT IN BOLT
N.E. CORNER

"X" of conc. bases
of Light Poles.

S.R. #53 South

ties & masonry nails
X-ties 8" ± off point



PERSONNEL	TITLE	PERSONNEL	TITLE	COUNTY	DATE
Schneider		Zahn		Seneca	8-21-62
Hawk		Schwartz		S. R. #224	WEATHER Fair
Mosser				SEC. 10.67 to 14.76	TEMP. 80°
Snider				409 Mi.	

DESCRIPTION Ties for Control Points **T-35** JOB NO. 02524

43

41-A

41

40

39

