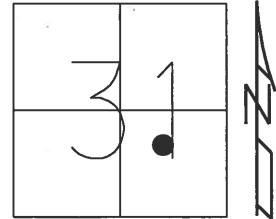


O.D.O.T. DISTRICT 2 SURVEY OFFICE (USE ONLY)

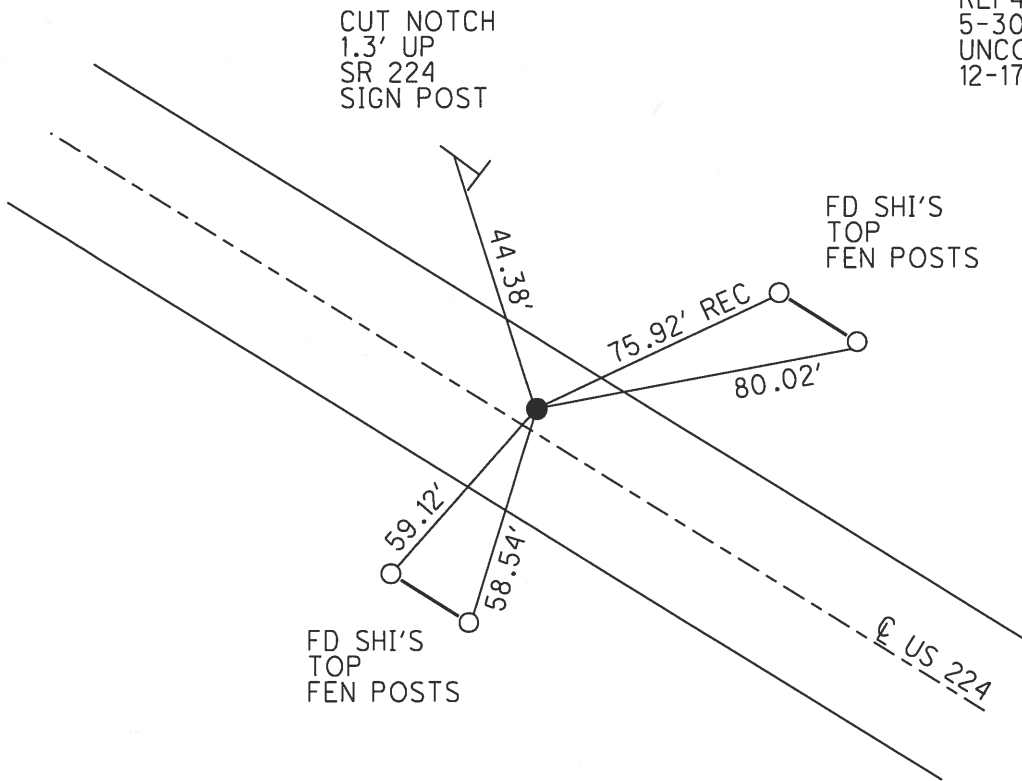
PERSONNEL _____ REFERENCE NO. 44 SHEET 9 OF 12
 NOTES RHOADES DATE 5/30/17 ROUTE US 224
 H.C. O'DONNELL WEATHER SUNNY COUNTY SENECA
 R.C. POORE TEMP. 65° TOWNSHIP CLINTON
 DWG BY MILLER PID 102819 SECTION 31
 T 2 N R 15 E

TYPE MONUMENT MAG/WASHER
 ON SURFACE - ~~BELOW~~ ON _____
 OFFSET ☉ PAVEMENT 1' LT : RT
10.9' TO LT EDGE PAVEMENT
 STATION: 711+32



HORIZ. DATUM: NAD83 (2011) GEOID: 2012A
 GRID: NORTHING: 518074.521 EASTING: 1782227.928

RECORD: P.T.
 STA. 169+37.94
 FD PK/WASHER
 4-27-04, DCH
 SET MAG/WASHER
 8-17-04, MB
 FD MAG/WASHER
 REF 44
 5-30-17
 UNCOVERED
 12-17-18, JFO



O.D.O.T. DISTRICT 2 SURVEY OFFICE

PERSONNEL

REFERENCE NO. 44

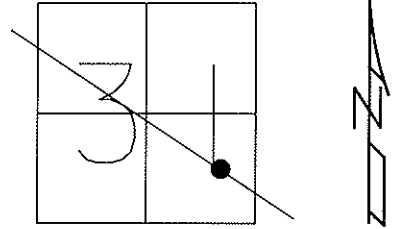
SHEET 22 OF 26

NOTES NUHFER
 H.C. HOOKER
 R.C. HOMAN
ARMS

DATE 4-27-04
 WEATHER SNOW
 TEMP. 40°

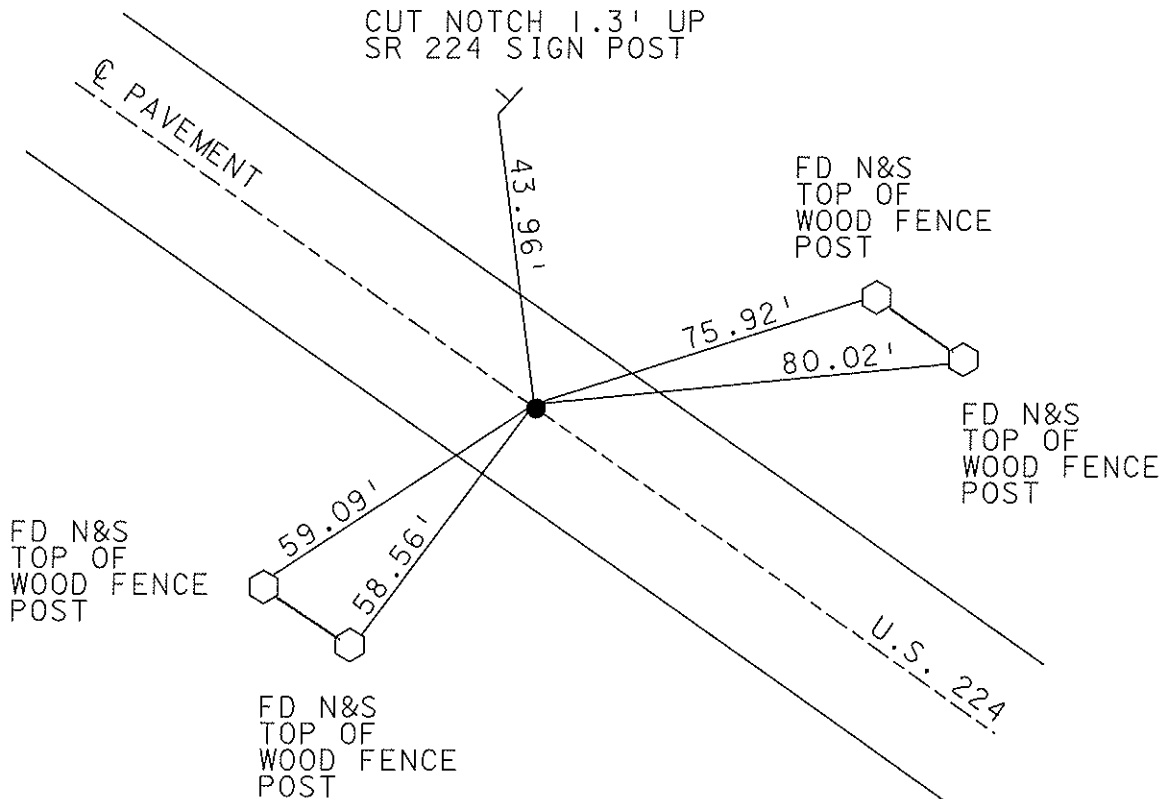
ROUTE US 224
 COUNTY SENECA
 TOWNSHIP CLINTON
 SECTION 31
T 2 N R 15 E

TYPE MONUMENT PK & WASHER
 ON SURFACE - ~~BELOW~~ ON
 LEFT - ~~C PAVT~~ ~~RIGHT~~ 1' LT
10.9' TO LT EDGE PAVEMENT
 S.L.M. 711+32



P.T. 169+37.94

SET MAG NAIL
 & WASHER
 8-17-04
 MB



O.D.O.T. DISTRICT 2 SURVEY OFFICE

PERSONNEL

REFERENCE NO. 44

SHEET _____ OF _____

NOTES R. Cheney

H.C. R. Barbour

R.C. J. Ripple

R. Geyman

DATE 11-8-91

WEATHER SUNNY

TEMP. 20°

ROUTE 224

COUNTY Seneca

TOWNSHIP CLINTON

SECTION 31

T. 2 N R. 15 E

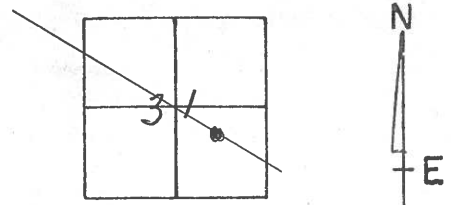
TYPE MONUMENT P.K. & Washer

~~ON SURFACE~~ - BELOW P.K.

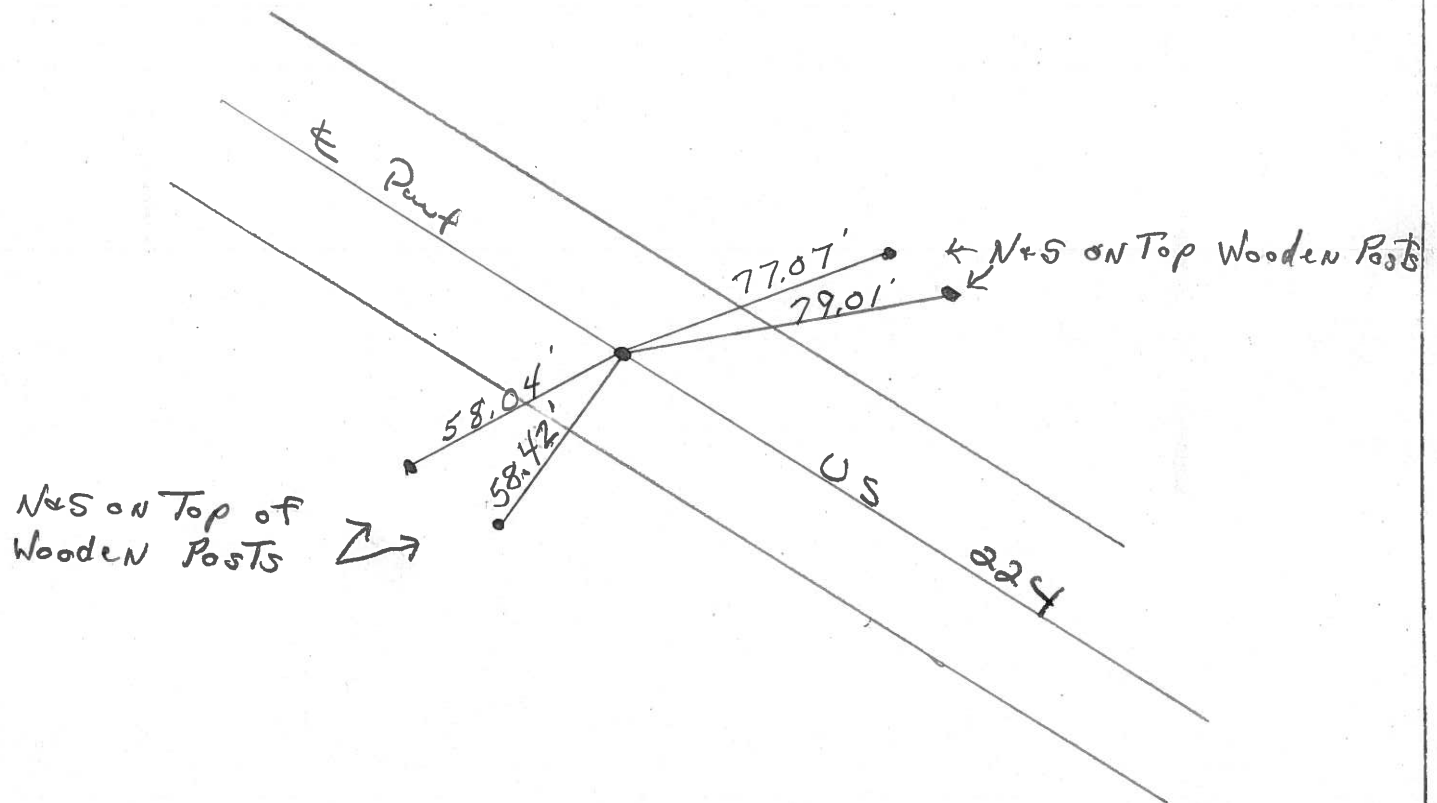
LEFT - ~~C.PAV'T.~~ - RIGHT 1' LT. &

11 TO 11 EDGE PAVEMENT

S.L.M. 711 * 32

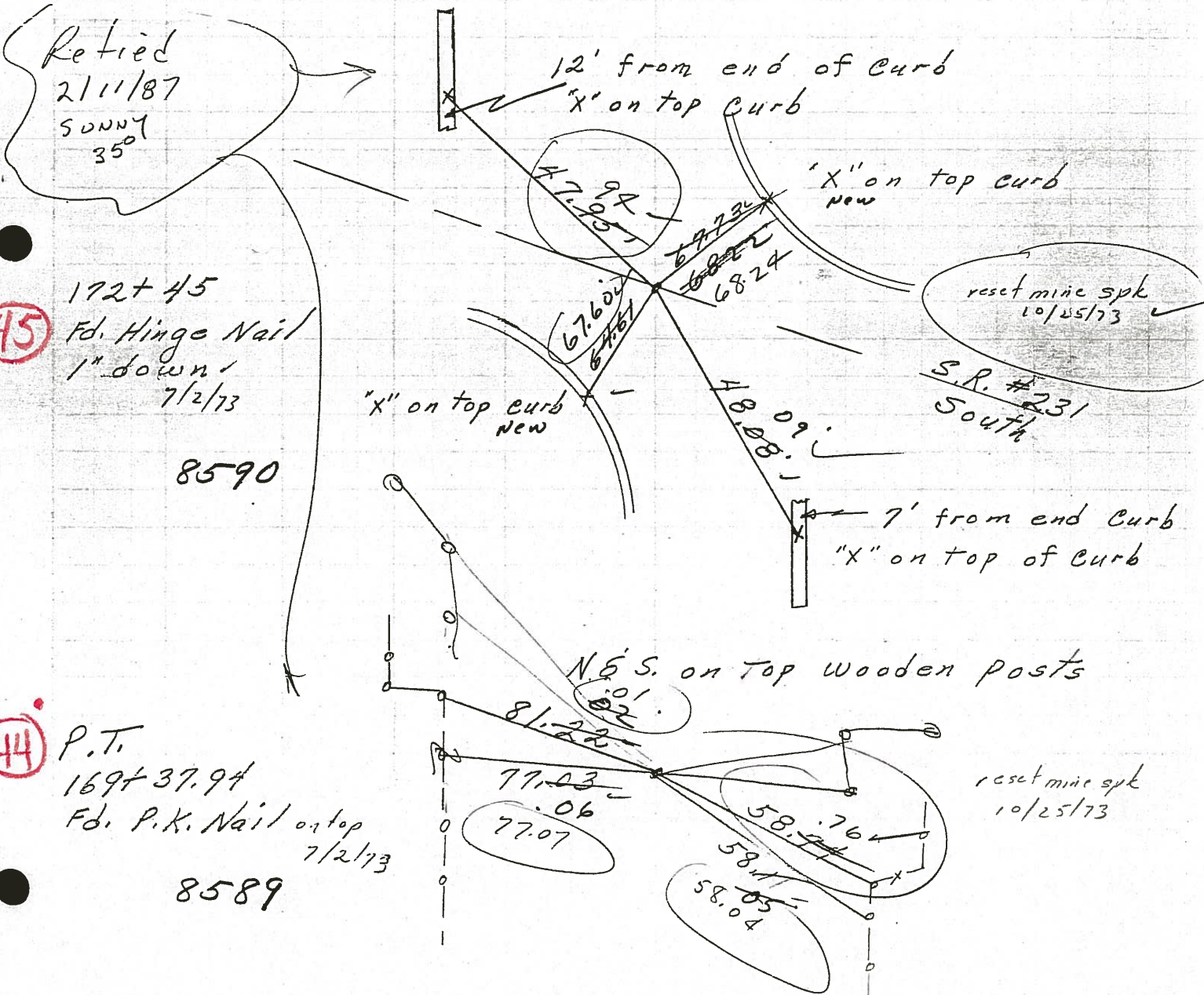


P.T.



PERSONNEL	TITLE	PERSONNEL	TITLE	COUNTY	DATE
Schneider				Seneca	4-20-71
Mosser				S. R. U.S. 224	WEATHER Fair
Barbour				SEC. Tiffin By-Pass	TEMP. 65°
Geyman					
DESCRIPTION				JOB NO.	
Ties for control Points					
LEFT		CENTER LINE		RIGHT	

Sunny 50°
4/20/84



45

172+45
Fd. Hinge Nail
1" down
7/2/73
8590

44

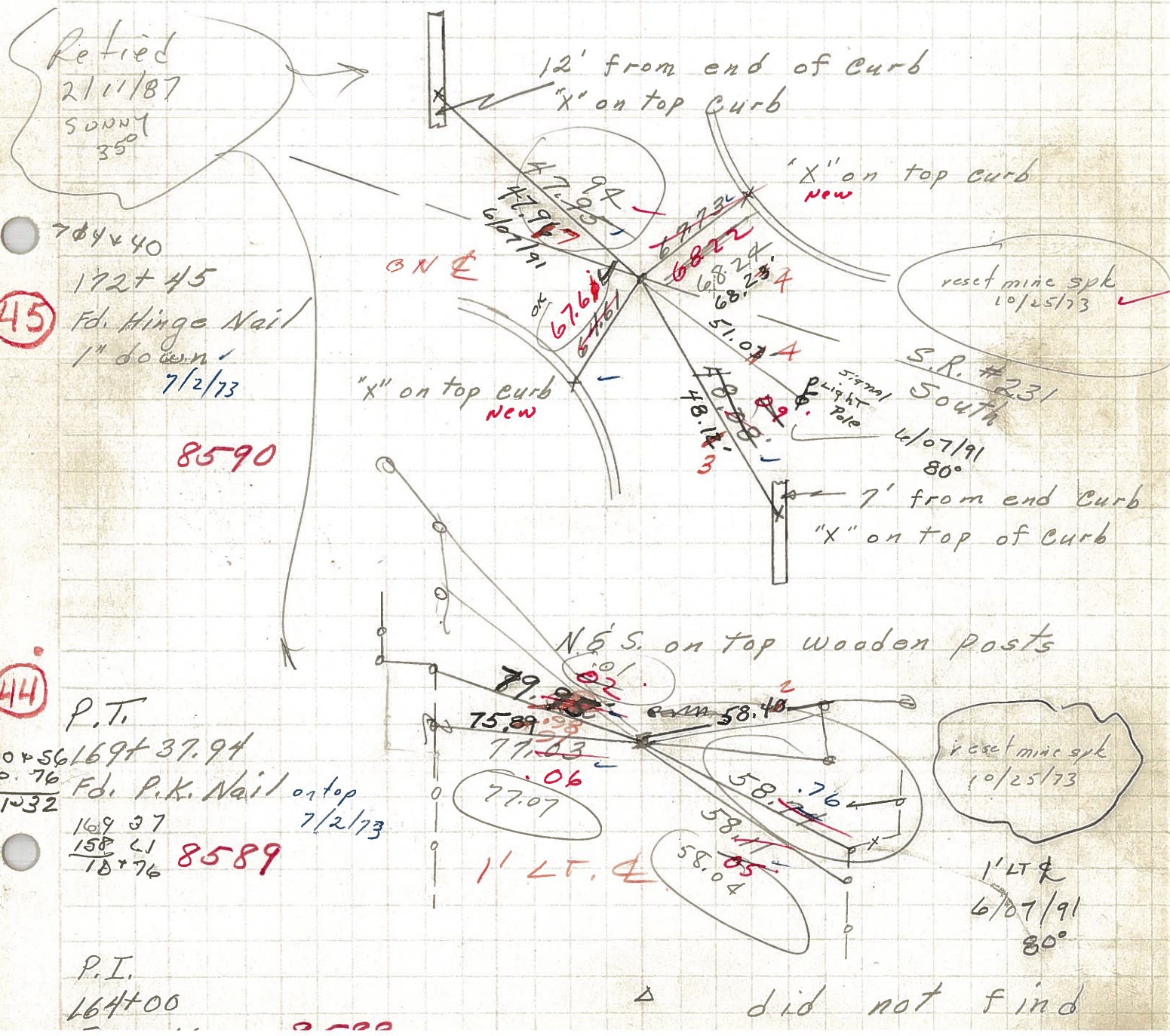
P.T.
169+37.94
Fd. P.K. Nail on top
7/2/73
8589

P.I.
164+00
E=12.66
8588

△ did not find

PERSONNEL	TITLE	PERSONNEL	TITLE	COUNTY	DATE	S. R.	WEATHER	TEMP.	DESCRIPTION	JOB NO.
Schneider				Seneca	4-20-71	U.S. 224	Fair	65°	Ties for control points	
Mosser										
Barbour										
Geyman										

SET PK/WASH 11-8-91 SURVIV 30°
 24' PAINT CH #
 Sunny 30°
 4/20/84
 B-HC
 R-FL
 G-F



PERSONNEL TITLE PERSONNEL TITLE

Schneider

Zahn

COUNTY Saxapa

DATE 8-21-62

Hawk

Schwartz

S. R. # 224

WEATHER Fair

Mosser

SEC. 10.67 to 14.76

TEMP. 85°

DESCRIPTION Ties for Control Points

JOB NO.

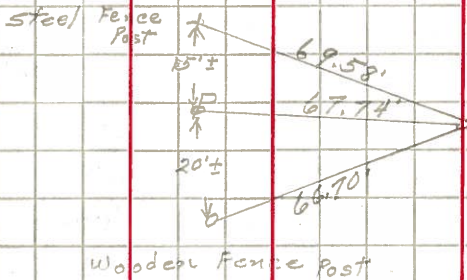
LEFT

CENTER LINE

RIGHT

47

P.T.
224+34.68
Found R.R. spike
766+25 (S.L.M.)



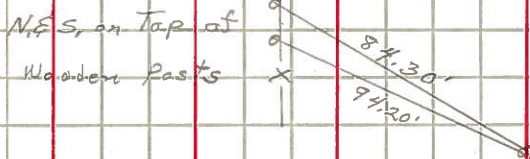
8589

P.I.
213+23.25
E=178.84'

8588

46

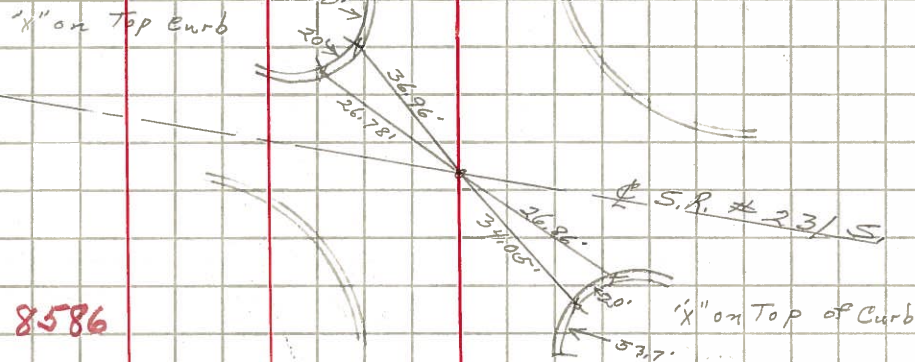
P.C.
201+41.35
Found R.R. spike
743+25 (S.L.M.)



8587

45

172+45
Found N.E.S.
714+28 (S.L.M.)



8586

44

P.T.
169+37.94
Found P.K. Nail



8585