

O.D.O.T. DISTRICT 2 SURVEY OFFICE (USE ONLY)

PERSONNEL

REFERENCE NO. 45

SHEET 10 OF 12

NOTES RHOADES

DATE 6/13/17

ROUTE US 224

H.C. O'DONNELL

WEATHER SUNNY

COUNTY SENECA

R.C. POORE

TEMP. 80°

TOWNSHIP CLINTON

SECTION 31

DWG BY MILLER PID 102819

T 2 N R 15 E

TYPE MONUMENT R.R. SPIKE

~~ON SURFACE~~ - BELOW 3"

OFFSET C PAVEMENT ON LT : RT

- TO - EDGE PAVEMENT

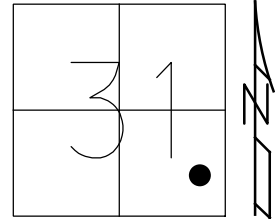
STATION: 714+40

HORZ.DATUM: NAD83 (2011)

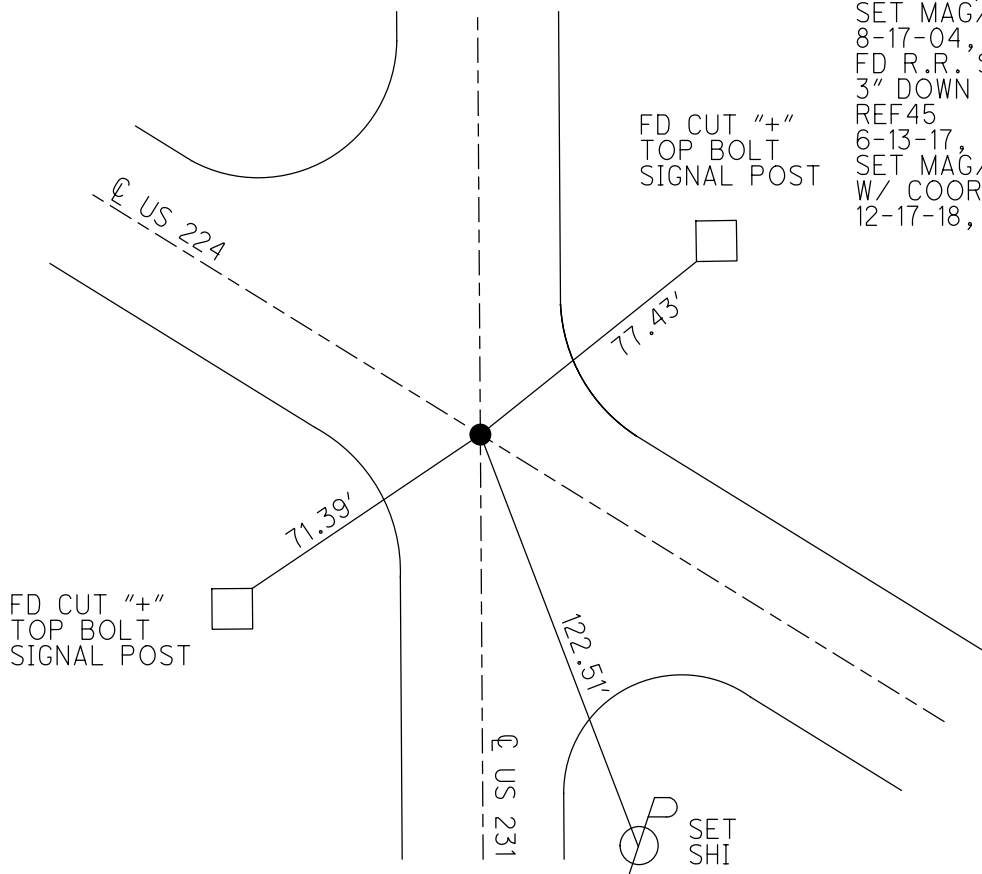
GEOID: NAVD88 2012A

GRID: NORTHING: 517909.010

EASTING: 1782486.553



RECORD:
 STA. 172+45.95
 FD P.K./WASHER
 4-27-04, DCH
 SET MAG/WASHER
 8-17-04, MB
 FD R.R. SPIKE
 3" DOWN
 REF45
 6-13-17, JFO
 SET MAG/WASHER
 W/ COORD.
 12-17-18, JFO



O.D.O.T. DISTRICT 2 SURVEY OFFICE

PERSONNEL

REFERENCE NO. 45

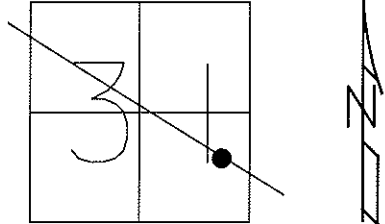
SHEET 23 OF 26

NOTES NUHFER
 H.C. HOOKER
 R.C. HOMAN
ARMS

DATE 4-27-04
 WEATHER CLOUDY
 TEMP. 40°

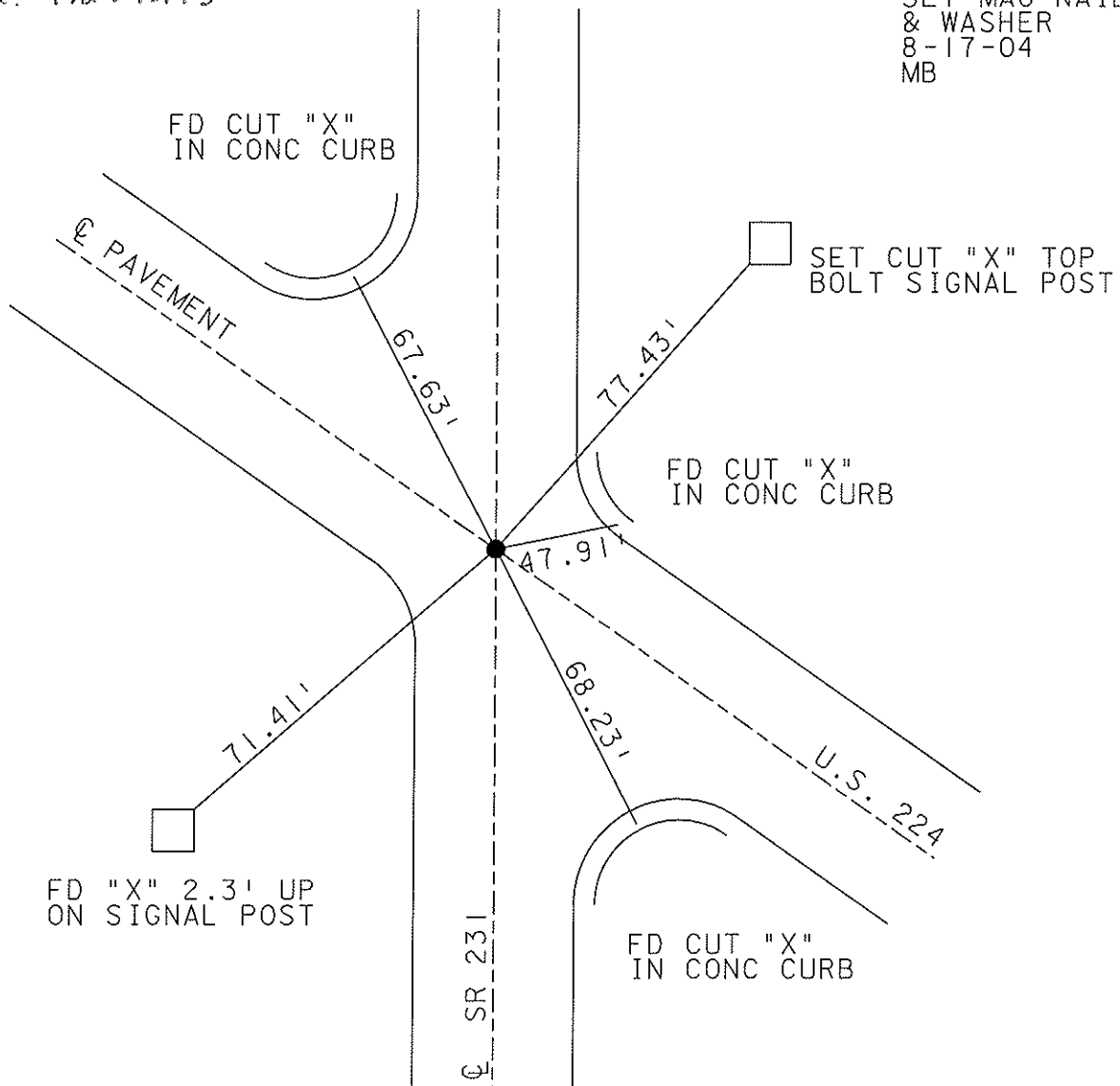
ROUTE US 224
 COUNTY SENECA
 TOWNSHIP CLINTON
 SECTION 31
T 2 N R 15 E

TYPE MONUMENT PK & WASHER
 ON SURFACE ~~-BELOW~~ ON
~~LEFT - C~~ PAVT - RIGHT ON
TO EDGE PAVEMENT
 S.L.M. 714+40



Plan Sta. 172+45.95

SET MAG NAIL
 & WASHER
 8-17-04
 MB



FD "X" 2.3' UP
 ON SIGNAL POST

SET CUT "X" TOP
 BOLT SIGNAL POST

SR 231

U.S. 224

O.D.O.T. DISTRICT 2 SURVEY OFFICE

PERSONNEL

REFERENCE NO. 45

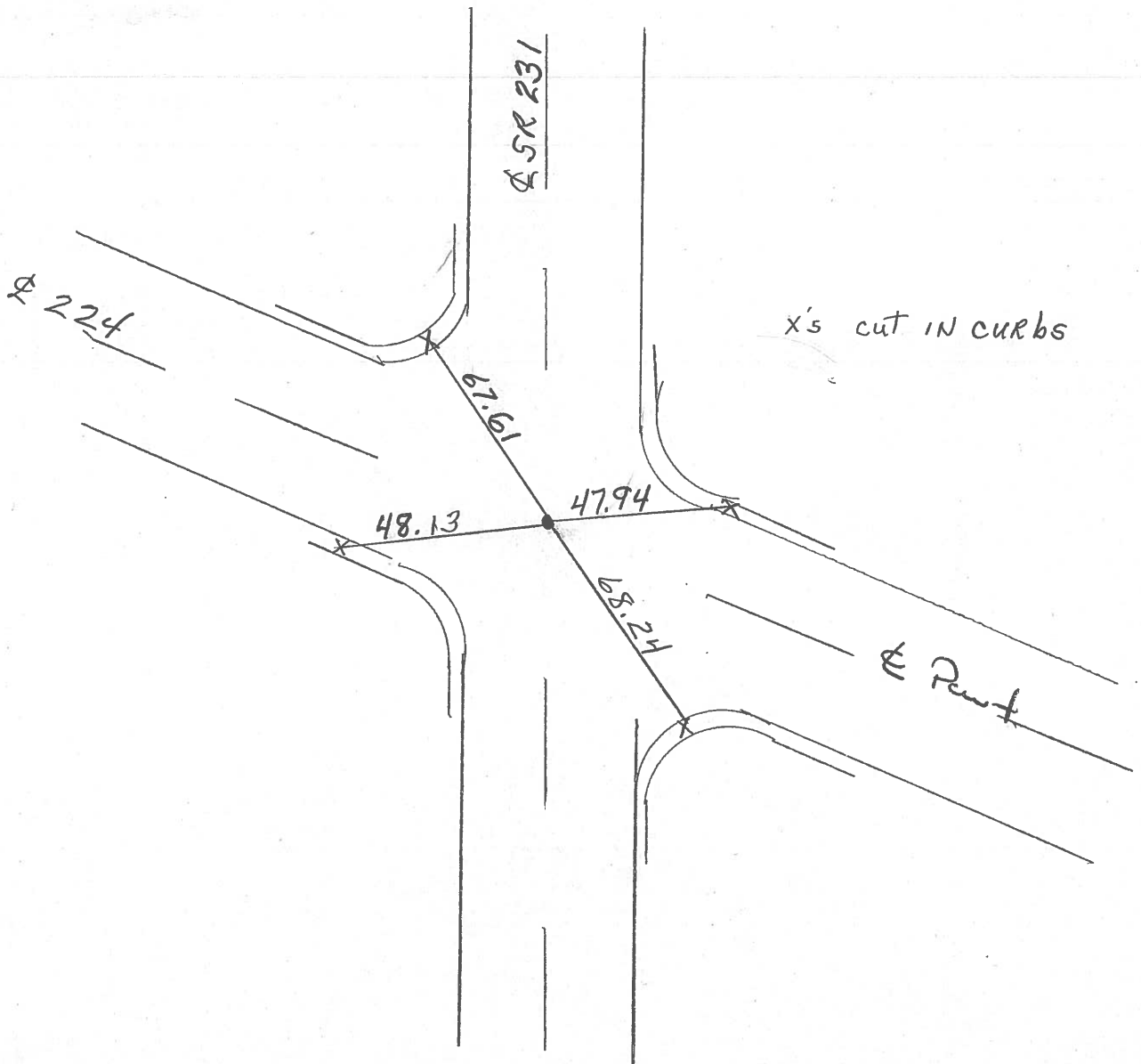
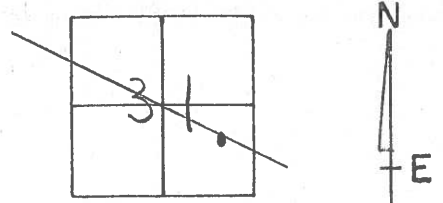
SHEET _____ OF _____

NOTES P. Cheney
 H.C. R. BARBOUR
 R.C. J. Ripple
R. Geyman

DATE 11-8-91
 WEATHER SUNNY
 TEMP. 20°

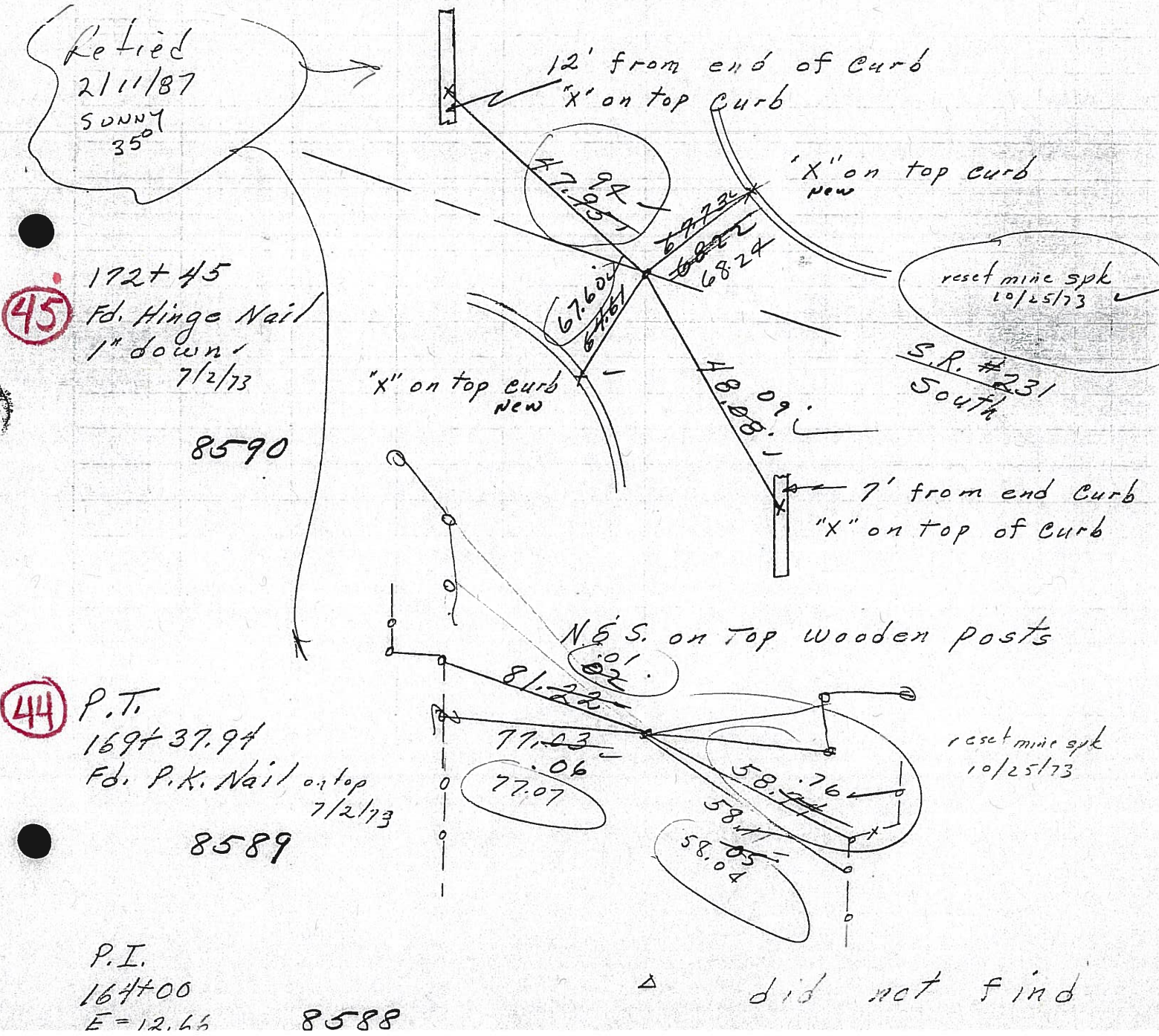
ROUTE 224
 COUNTY Seneca
 TOWNSHIP CLINTON
 SECTION 31
T2 N R 15 E

TYPE MONUMENT P.K. & Washer
~~ON SURFACE~~ - BELOW P.K.
~~LEFT - & PAV'T. - RIGHT~~
 _____ TO _____ EDGE PAVEMENT
 S.L.M. 714 ~ 40



PERSONNEL	TITLE	PERSONNEL	TITLE	COUNTY	DATE		
Schneider				Seneca	4-20-71		
Mosser				S. R. U.S. 224	WEATHER Fair		
Barbour				SEC. Tiffin By-Pass	TEMP. 65°		
Geyman							
DESCRIPTION Ties for control Points				LEFT	CENTER LINE	RIGHT	JOB NO.

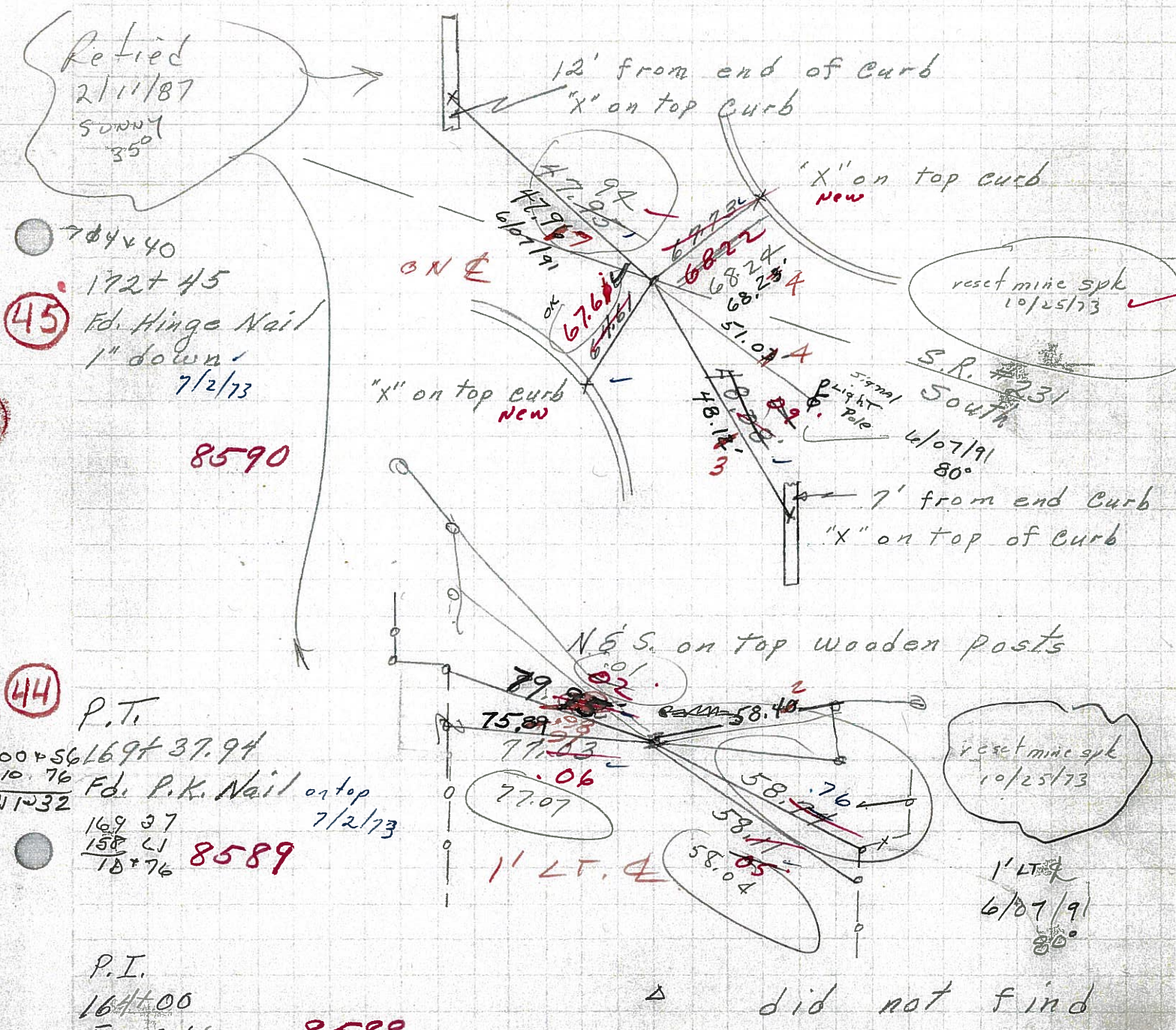
Sunny 30°
4/20/84



PERSONNEL	TITLE	PERSONNEL	TITLE	COUNTY	DATE
Schneider				Seneca	4-20-71
Mosser				S. R. U.S. 224	WEATHER Fair
Barbour				SEC. Tiffin By-Pass	TEMP. 65°
Geyman					

DESCRIPTION Ties for control Points JOB NO. _____

SET PK/WASH 11-8-91 SURVIVY 30°
 24' PAU'T CH V
 Sunny 30°
 4/20/84
 B-HC
 R-FL
 G-F

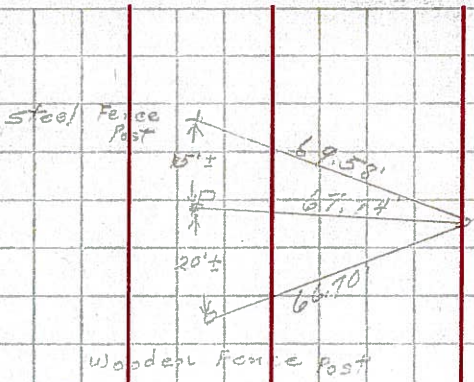


PERSONNEL	TITLE	PERSONNEL	TITLE	COUNTY	DATE
Schneider		Zahn		Serrano	8-21-62
Hawk		Schwartz		S. R. #224	WEATHER Fair
Mosser				SEC. 10.67 to 14.76	TEMP. 85°
Snyder					

DESCRIPTION Ties for Control Points JOB NO.

47

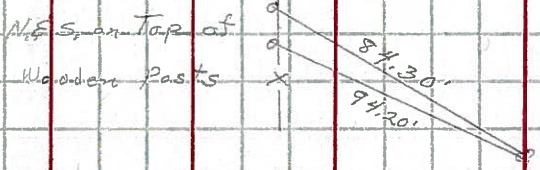
P.T.
224+34.68
Found R.R. spike
766+25 (S.L.M.)



8589

46

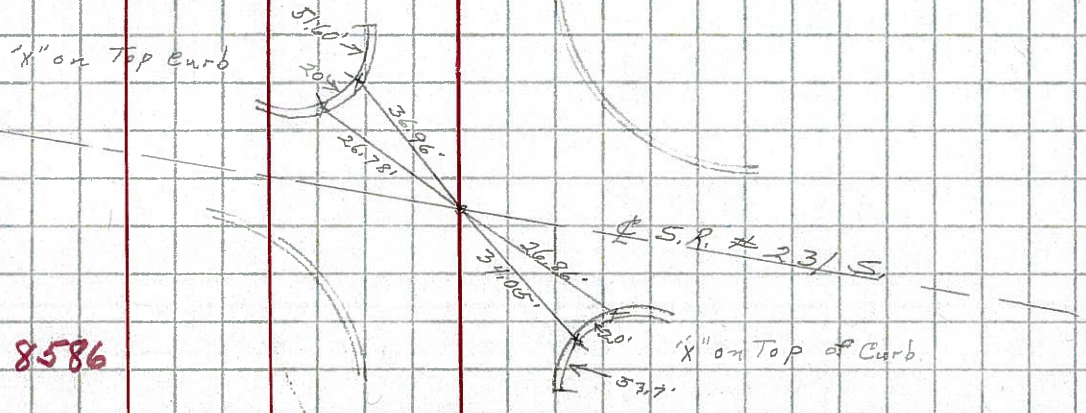
P.I.
213+23.25
E=178.84



8588

45

P.C.
201+41.35
Found R.R. spike
743+25 (S.L.M.)

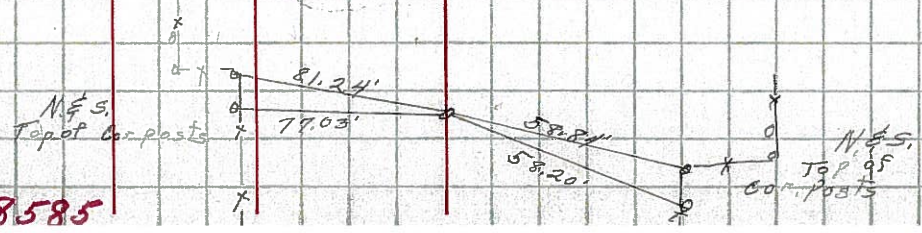


8587

8586

44

P.T.
169+37.94
Found P.K. Nail
1141 (S.L.M.)



8585