

O.D.O.T. DISTRICT 2 SURVEY OFFICE (USE ONLY)

PERSONNEL _____ REFERENCE NO. 46 SHEET 11 OF 2

NOTES RHOADES DATE 5/30/17 ROUTE US 224

H.C. O'DONNELL WEATHER SUNNY COUNTY SENECA

R.C. POORE TEMP. 65° TOWNSHIP CLINTON

DWG BY MILLER PID 102819 SECTION 32

T 2 N R 15 E

TYPE MONUMENT MAG/WASHER

ON SURFACE - ~~BELOW~~ ON _____

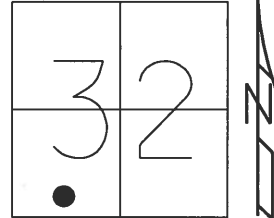
OFFSET CL PAVEMENT ON _____ LT : RT

12' TO RT EDGE PAVEMENT

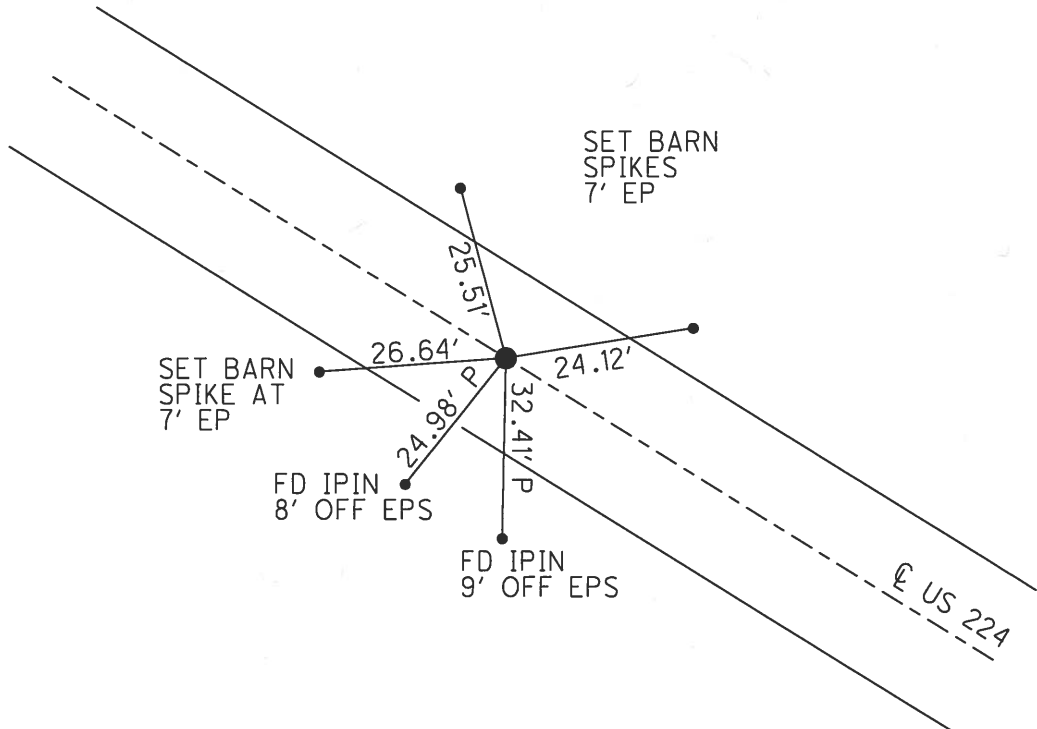
STATION: 743+39

HORZ.DATUM: NAD83 (2011) GEOID: 2012A

GRID: NORTHING: 516348.236 EASTING: 1784926.369



RECORD: P.C.
STA. 201+41.35
FD P.K./WASHER
4-27-04, DCH
SET MAG/WASHER
8-18-04, MB
FD MAG/WASHER
REF 46
5-30-17
UNCOVERED
12-17-18, JFO



O.D.O.T. DISTRICT 2 SURVEY OFFICE

PERSONNEL

REFERENCE NO. 46

SHEET 24 OF 26

NOTES NUHFER

DATE 4-27-04

ROUTE US 224

H.C. HOOKER

WEATHER CLOUDY

COUNTY SENECA

R.C. HOMAN

TEMP. 40°

TOWNSHIP CLINTON

ARMS

SECTION 32

T 2 N R 15 E

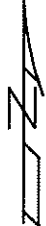
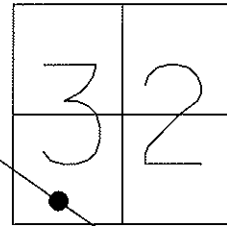
TYPE MONUMENT PK & WASHER

ON SURFACE ~~- BELOW~~ ON

~~LEFT - Q~~ PAV'T - RIGHT ON

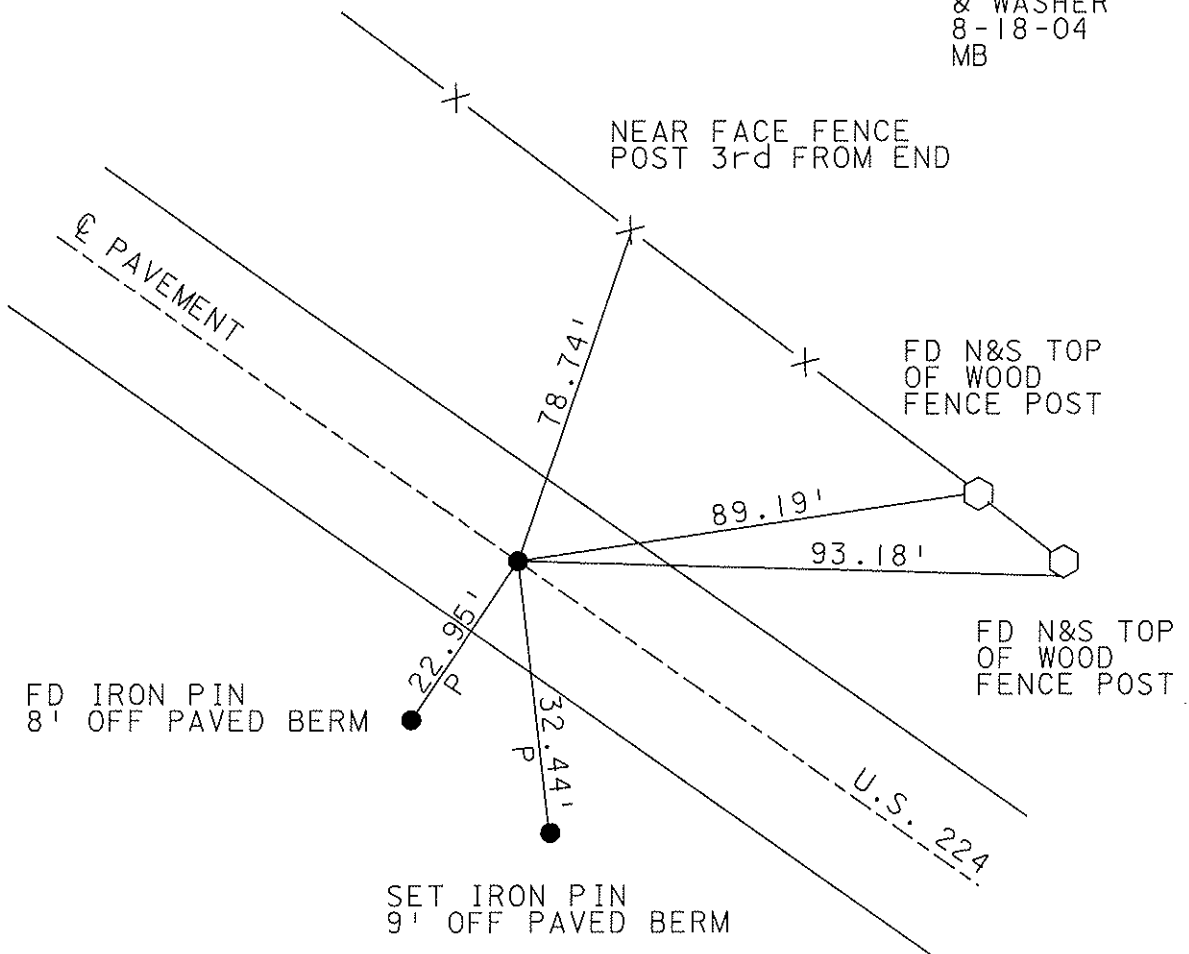
12' TO RT EDGE PAVEMENT

S.L.M. 743+39



P.C. 201+41.35

SET MAG NAIL
& WASHER
8-18-04
MB



O.D.O.T. DISTRICT 2 SURVEY OFFICE

PERSONNEL

REFERENCE NO. 46

SHEET _____ OF _____

NOTES R. Cheney

H.C. R. Barbour

R.C. J. Ripple

R. Geyman

DATE 11-8-91

WEATHER SUNNY

TEMP. 30°

ROUTE 224

COUNTY Seneca

TOWNSHIP CLINTON

SECTION 32

T 2 N R 15 E

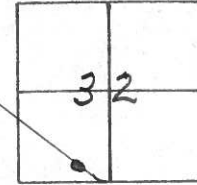
TYPE MONUMENT P.K. & Washer

~~ON SURFACE~~ - BELOW R.R. Spike

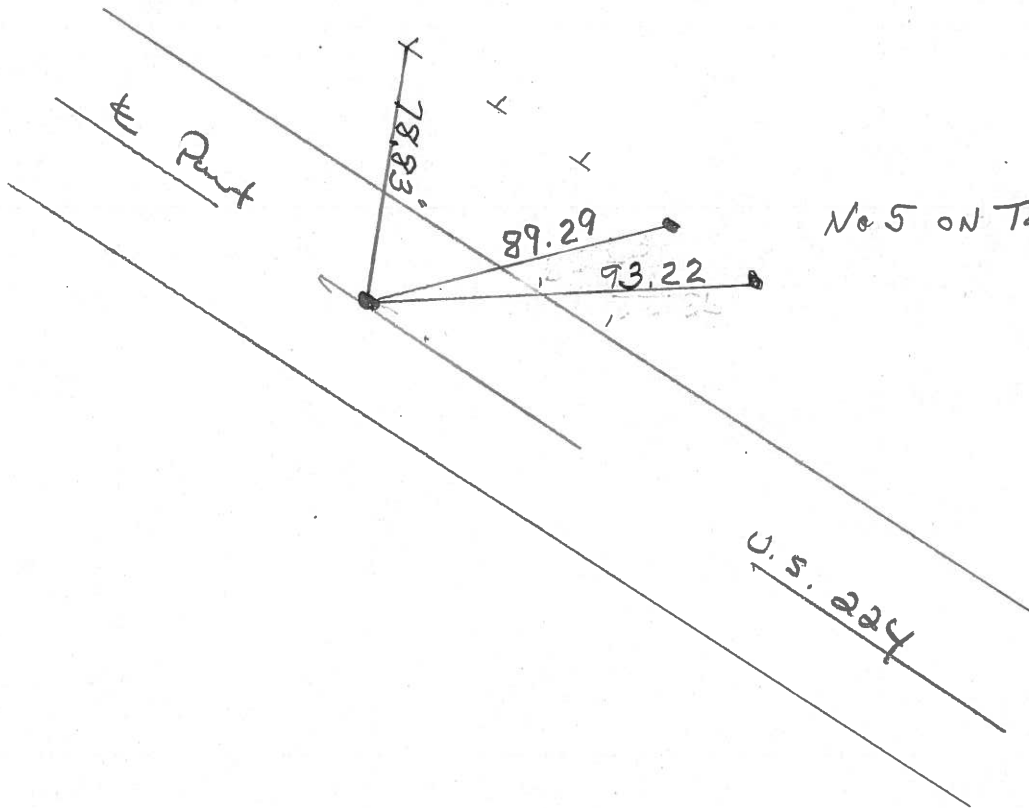
~~LEFT - C. PAV'T. - RIGHT~~

12' TO RT. EDGE PAVEMENT

S.L.M. 743 & 39



P.C.:



No 5 on Top of Wooden Posts

PERSONNEL	TITLE	PERSONNEL	TITLE	COUNTY	DATE		
Schneider				Seneca	4-20-71		
Mosser				S. R. U.S. 224	WEATHER Fair		
Barbour				SEC. Tiffin 3v-Pass	TEMP 65°		
Geyman							
DESCRIPTION Ties for Control Points				LEFT	CENTER LINE	RIGHT	JOB NO.

S.R. # 100

47

reset mine spk 10/24/73

P.T.

224+34.68

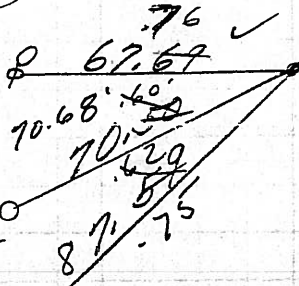
Fd. R.R. Spk.

P.K. Nail on top

Fd. R.R. spk 1" down

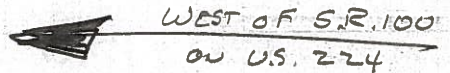
7/2/73

8593



4/20/84
sunny 50°

6/13/89
OVERCAST
72°



wood fence posts

P.I.

213+23.75

E = 178.84'

Δ did not find

8592

46

P.G.

201+41.35

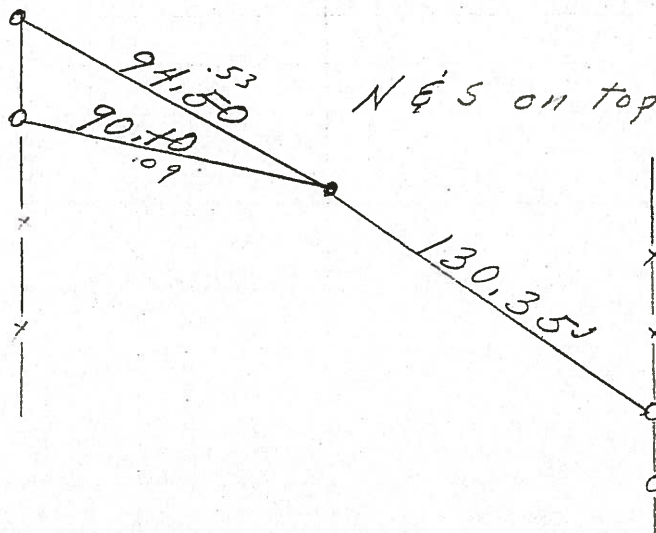
Fd. R.R. Spk.

1" down

7/2/73

reset mine spk 10/25/73

8591



N & S on top wooden posts

PERSONNEL	TITLE	PERSONNEL	TITLE
Schneider			
Mosser			
Barbour			
Geyman			

COUNTY Seneca DATE 4-20-71
 S. R. U.S. 224 WEATHER Fair
 SEC. Tiffin By-Pass TEMP. 65°
 DESCRIPTION Ties for Control Points JOB NO. _____

LEFT CENTER LINE RIGHT

S. R. # 100

SET PK/WASH 11-8-1991 SUNNY 30°
24' PAV'T.

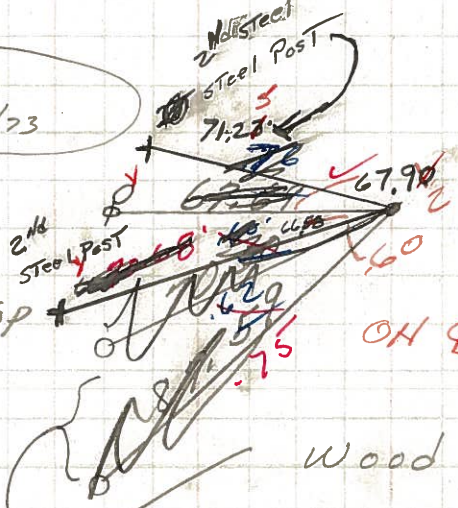
CH-4
B-14C
F-FL
GF

4/20/84
sunny 50°

6/13/89
OVERCAST
72°

47

reset mine spk 10/24/73
 P.T.
 224+34.68
 For R.R. Spk.
 P.K. Nail on top
 Ed. R.R. spk 1" down
 7/2/73



6/07/91
OH E. sunny 80°

766+20

8593

Wood fence posts

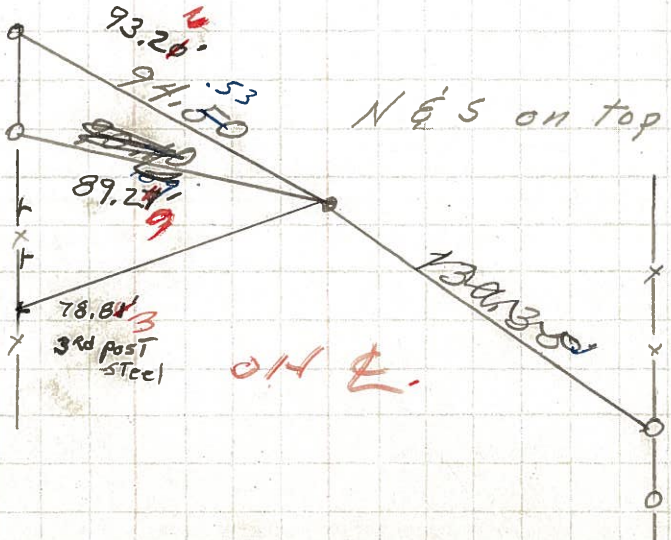
P.I.
 213+23.75
 E = 178.84'

△ did not find

8592

714+40
 28+99
 143039

P.G.
 201+41.35
 Ed. R.R. spk.
 1" down
 7/2/73



N & S on top wooden posts

46

reset mine spk 10/25/73
 501-41
 172 45
 28+99
 8591
 6/07/91 80°

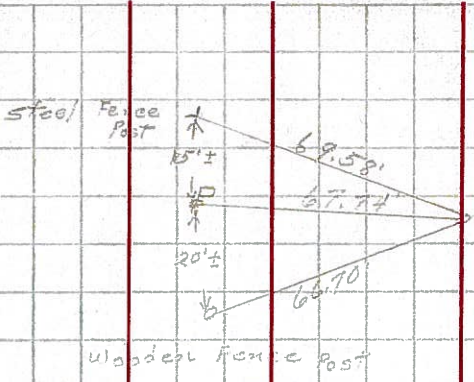
OH E.

PERSONNEL	TITLE	PERSONNEL	TITLE	COUNTY	DATE
Schneider		Zahn		Sevier	8-21-62
Hawk		Schwartz		S. R. #224	WEATHER Fair
Mosser				SEC. 10.67 to 14.76	TEMP. 85°
Snider					

DESCRIPTION Ties for Control Points JOB NO.

47

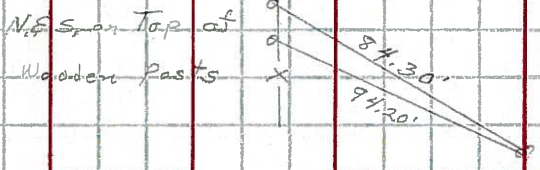
P.T.
224+34.68
Found R.R. spk.
766+25 (S.L.M.)



8589

46

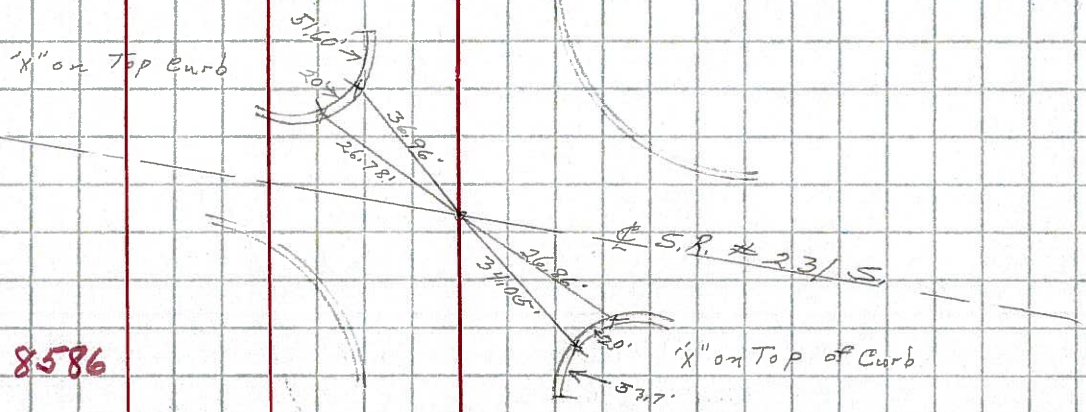
P.T.
213+23.25
E=178.84



8588

45

P.C.
201+46.35
Found R.R. Spk.
743+25 (S.L.M.)

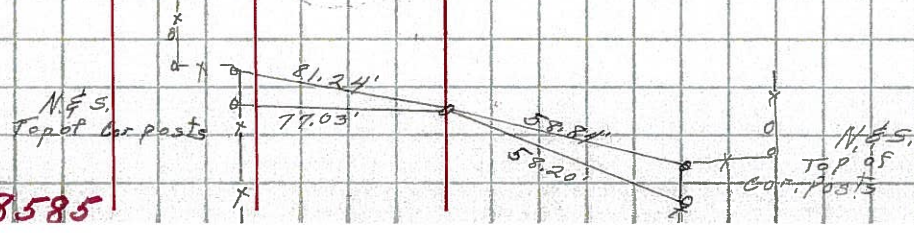


8587

8586

44

P.T.
169+37.94
Found P.K. Nail
714+28 (S.L.M.)



8585