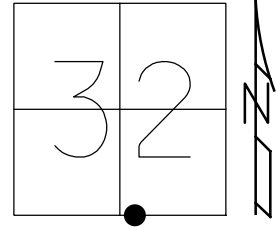


O.D.O.T. DISTRICT 2 SURVEY OFFICE (USE ONLY)

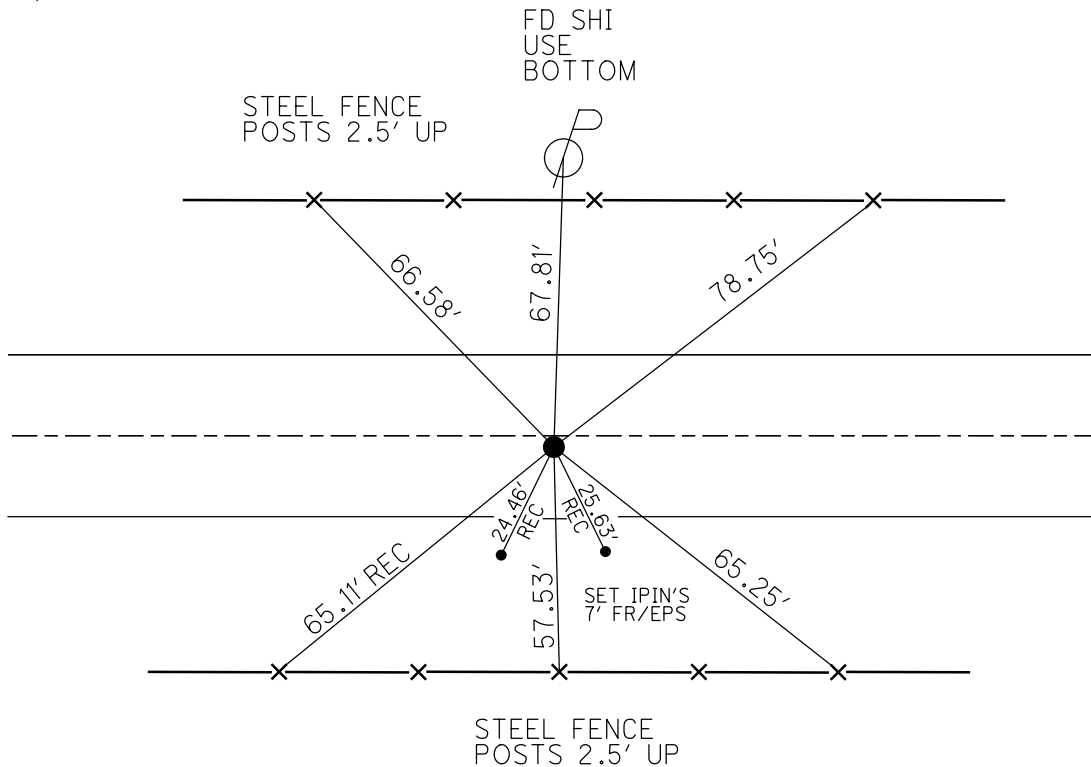
PERSONNEL _____ REFERENCE NO. 47 SHEET 12 OF 12
 NOTES RHOADES DATE 5/30/17 ROUTE US 224
 H.C. O'DONNELL WEATHER SUNNY COUNTY SENECA
 R.C. POORE TEMP. 65° TOWNSHIP CLINTON
 DWG BY MILLER PID 102819 SECTION 32
 T 2 N R 15 E

TYPE MONUMENT MAG/WASHER
 ON SURFACE - ~~BELOW~~ ON
 OFFSET \odot PAVEMENT 0.5' \perp : RT
11.2' TO RT EDGE PAVEMENT
 STATION: 766+20



HORZ.DATUM: NAD83 (2011) GEOID: NAVD88 2012A
 GRID: NORTHING: 515748.909 EASTING: 1787103.702

RECORD: P.T.
 STA 224+34.68
 FD PK/WASHER
 4-28-04, DCH
 SET MAG/WASHER
 8-18-04, MB
 FD MAG/WASHER
 REF47
 5-30-17, JFO
 UNCOVERED
 12-17-18, JFO



O.D.O.T. DISTRICT 2 SURVEY OFFICE

PERSONNEL

REFERENCE NO. 47

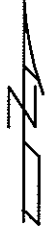
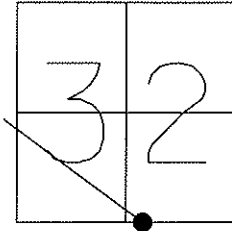
SHEET 25 OF 26

NOTES _____
 H.C. NUHFER
HOOVER
 R.C. HOMAN
ARMS

DATE 4-28-04
 WEATHER SUNNY
 TEMP. 35°

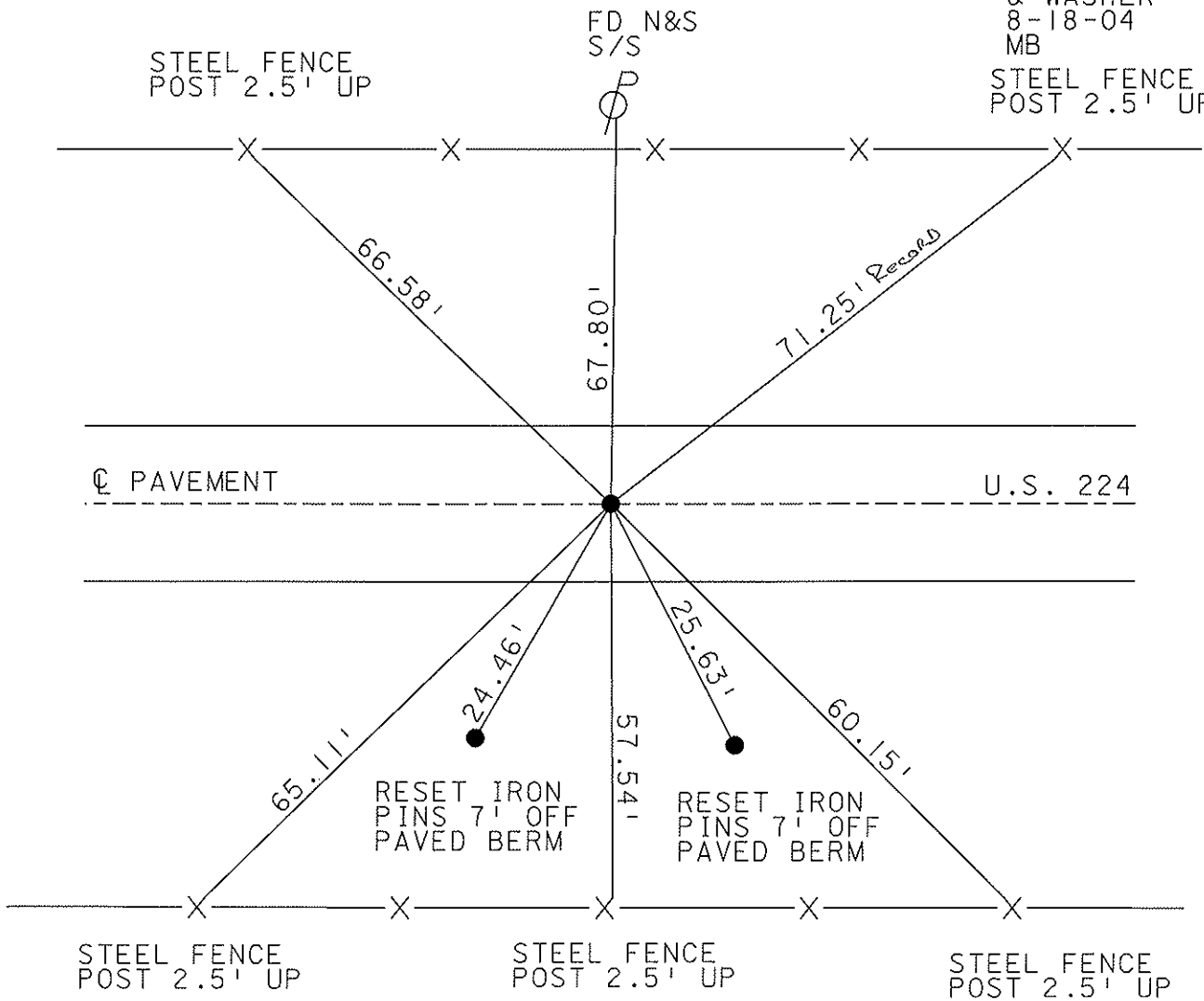
ROUTE US 224
 COUNTY SENECA
 TOWNSHIP CLINTON
 SECTION 32
T 2 N R 15 E

TYPE MONUMENT PK & WASHER
 ON SURFACE - BELOW ON _____
~~LEFT - C PAVT - RIGHT~~ 0.5' RT
11.2' TO RT EDGE PAVEMENT
 S.L.M. 766+20



P.T. 224+34.68

SET MAG NAIL
 & WASHER
 8-18-04
 MB
 STEEL FENCE
 POST 2.5' UP



O.D.O.T. DISTRICT 2 SURVEY OFFICE

PERSONNEL

REFERENCE NO. 47

SHEET _____ OF _____

NOTES R. Chewy

H.C. R. Barbour

R.C. J. Ripple

R. Geyman

DATE 11-8-91

WEATHER SUNNY

TEMP. 30°

ROUTE 224

COUNTY Seneca

TOWNSHIP Clinton

SECTION 32

T2 N R 15 E

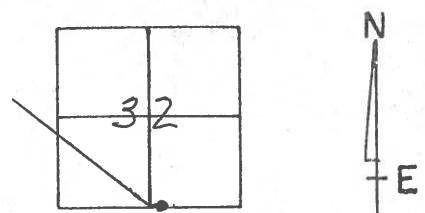
TYPE MONUMENT P.K. & Washer

~~ON SURFACE~~ - BELOW P.K.

~~EFT - C. PAV'T. - RIGHT~~

12 TO RT. EDGE PAVEMENT

S.L.M. 766 * 20

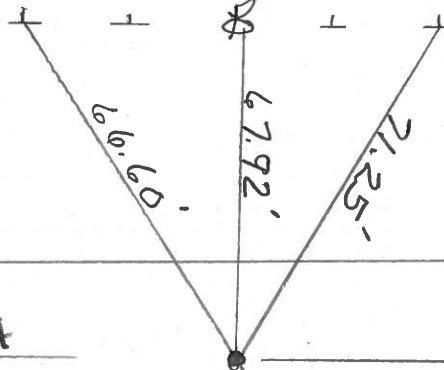


P.T.

Steel Fence Post

N & S IN POWER Pole

Steel Fence Post



E Pavt

U.S. 224

O.D.O.T. DISTRICT 2 SURVEY OFFICE

PERSONNEL

REFERENCE NO. 48

SHEET _____ OF _____

NOTES CRONIN

DRAWN 6-15-89

H.C. RIPPLE

DATE 6-13-89

R.C. GEYMAN

WEATHER OVERCAST

BARBOUR

TEMP. 72°

ROUTE US 224

COUNTY SENECA

TOWNSHIP EDEN

SECTION 5

T. / N. R. 15 E

TYPE MONUMENT PK NAIL

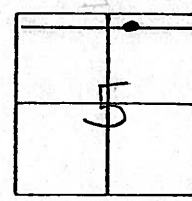
ON SURFACE - BELOW SURFACE

LEFT - ☉ PAV'T. - RIGHT _____

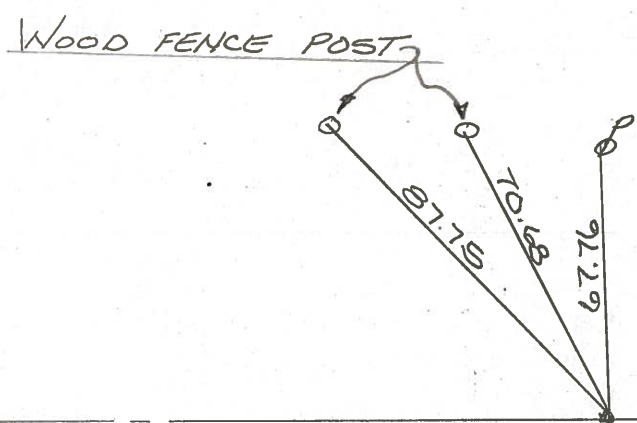
_____ TO _____ EDGE PAVEMENT

S.L.M. 766+15.14

47



FD. RR SPAKE 1" DOWN 7-2-73



NOTE:
 THIS IS ACTUALLY
 POINT #47.
 PLAN STA 224+34.68
 P.T. of curve
 EXTRA DRAWING
 CREATED IN ERROR.
 Ref #48 will be @
 SR 100 # US 224.

☉ US 224

PERSONNEL	TITLE	PERSONNEL	TITLE	COUNTY	DATE		
Schneider				Seneca	4-20-71		
Mosser				S. R. U.S. 224	WEATHER Fair		
Barbour				SEC. Tiffin By-Pass	TEMP 65°		
Geyman							
DESCRIPTION Ties for Control Points				LEFT	CENTER LINE	RIGHT	JOB NO.

S.R. # 100

47

reset mine spk 10/24/73

P.T.

224+34.68

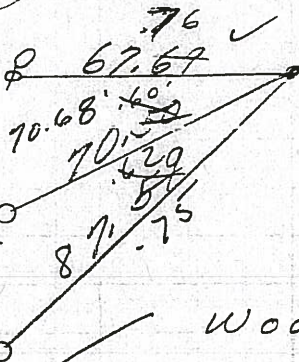
Fd. R.R. spk.

P. K. Nail on top

Fd. R.R. spk 1" down

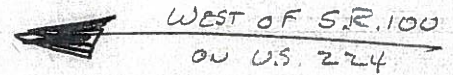
7/2/73

8593



4/20/84
sunny 50°

6/13/89
OVERCAST
72°



P.I.

213+23.75

E = 178.84'

8592

△ did not find

46

P.G.

201+41.35

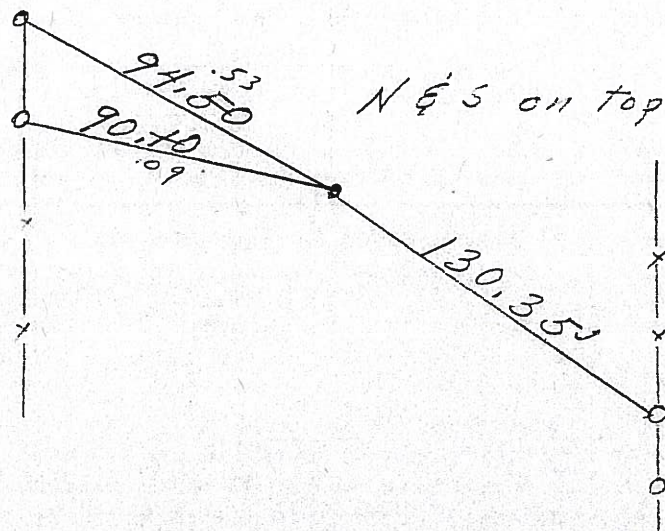
Fd. R.R. spk.

1" down

7/2/73

reset mine spk 10/25/73

8591



Nails on top wooden posts

PERSONNEL	TITLE	PERSONNEL	TITLE	COUNTY	DATE	S. R.	WEATHER	TEMP.	DESCRIPTION	JOB NO.
Schneider				Seneca	4-20-71	U.S. 224	Fair	65°	Ties for control points	
Mosser										
Barbour										
Geyman						Tiffin By-Pass				

S.R. # 100

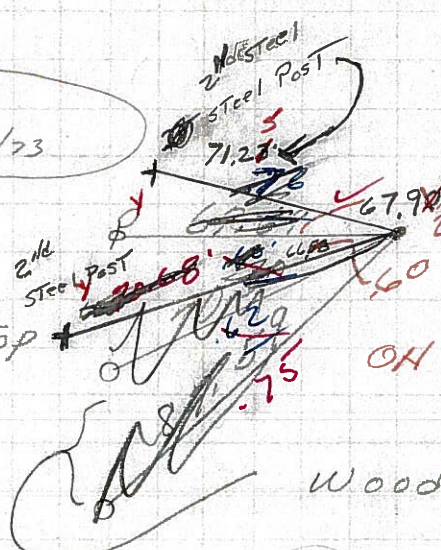
SET PK/WASH 11-8-1991 SUNNY 30°
24' PAINT

CH-4
B-HC
P-FL
G P

6/13/89
OVERCAST
72°

(47)

reset mine spk 10/24/73
P.I.
224 + 34.68
F.d. R.R. spk.
P.K. Nail on top
F.d. R.R. spk down
7/2/73



4/20/84
sunny 50°

6/07/91
OH E. sunny 80°

766+20

8593

wood fence posts

P.I.
213 + 23.75
E = 178.84'

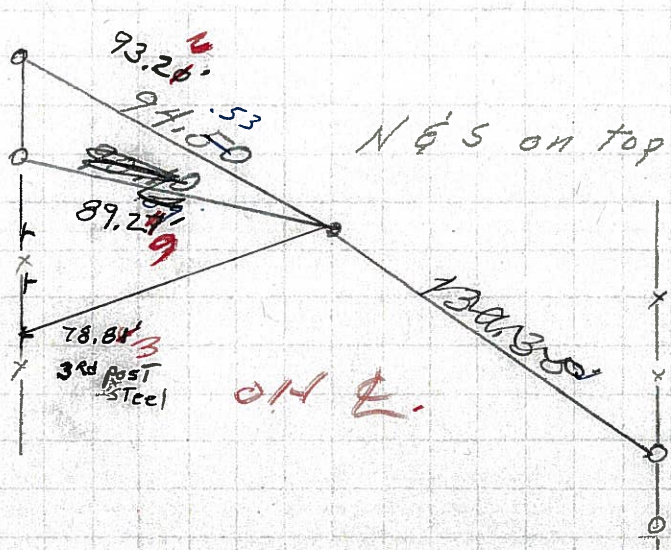
△ did not find

8592

714 + 40
28 + 99
743 + 39
P.C.

(46)

201 + 41.35
F.d. R.R. spk.
1" down
7/2/73



Nails on top wooden posts

reset mine spk 10/25/73
501 - 41
172 45
28 + 99
6/07/91 80°

8591

PERSONNEL TITLE PERSONNEL TITLE

Schneider

Zahn

COUNTY Seneca

DATE 8-21-62

Hawk

Schwartz

S. R. #224

WEATHER Fair

Mosser

Snider

SEC 10.67 to 14.76

TEMP 85°

DESCRIPTION Ties for Control Points

LEFT

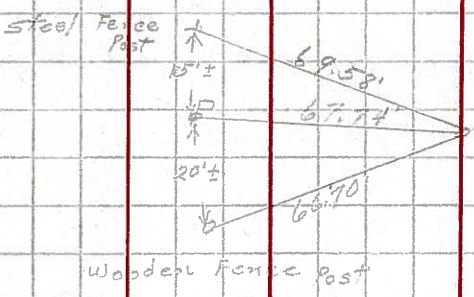
CENTER LINE

RIGHT

JOB NO.

47

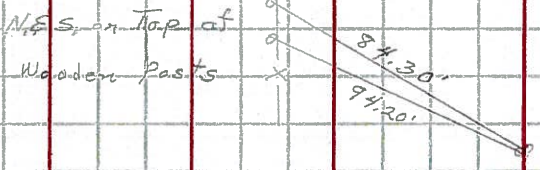
P.T.
224+34.68
Found R.R. spike
766+25 (S.L.M.)



8589

46

P.T.
213+23.25
E=178.84



8588

45

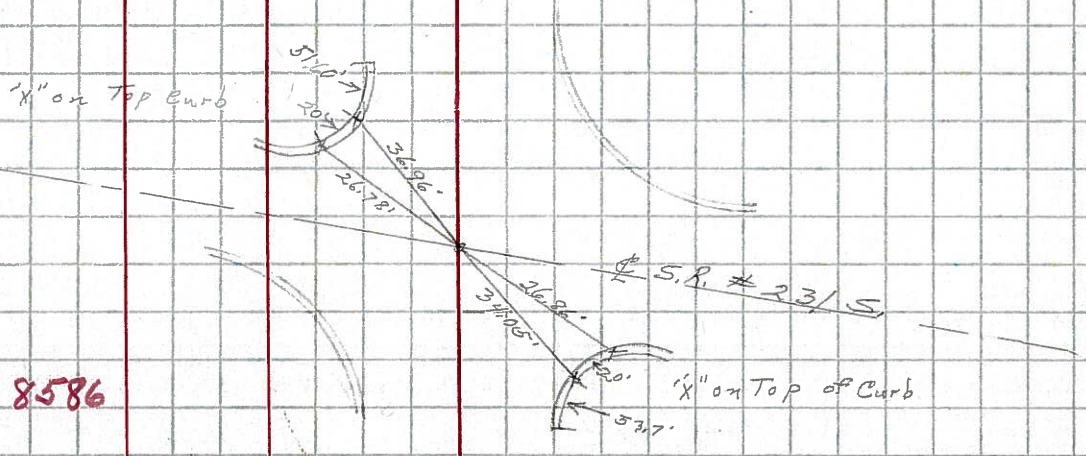
P.C.
201+41.35
Found R.R. spike
743+25 (S.L.M.)

8587

44

172+45
Found N.E.S.
714+28 (S.L.M.)

8586



P.T.
169+37.94
Found P.K. Nail
711+10 (S.L.M.)

8585

