

O.D.O.T. DISTRICT 2 SURVEY OFFICE (USE ONLY)

PERSONNEL \_\_\_\_\_ REFERENCE NO. 49 SHEET 2 OF 19

NOTES RHOADES DATE 5/26/17 ROUTE SR 224

H.C. O'DONNELL WEATHER CLOUDY COUNTY SENECA

R.C. CARSON TEMP. 63° TOWNSHIP EDEN

SECTION 5

DWG BY MILLER PID 102819

T 1 N R 15 E

TYPE MONUMENT MAG/WASHER

ON SURFACE - ~~BELOW~~ ON \_\_\_\_\_

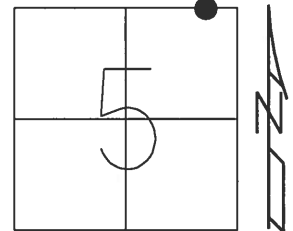
OFFSET ☉ PAVEMENT ON LT : RT

- TO - EDGE PAVEMENT

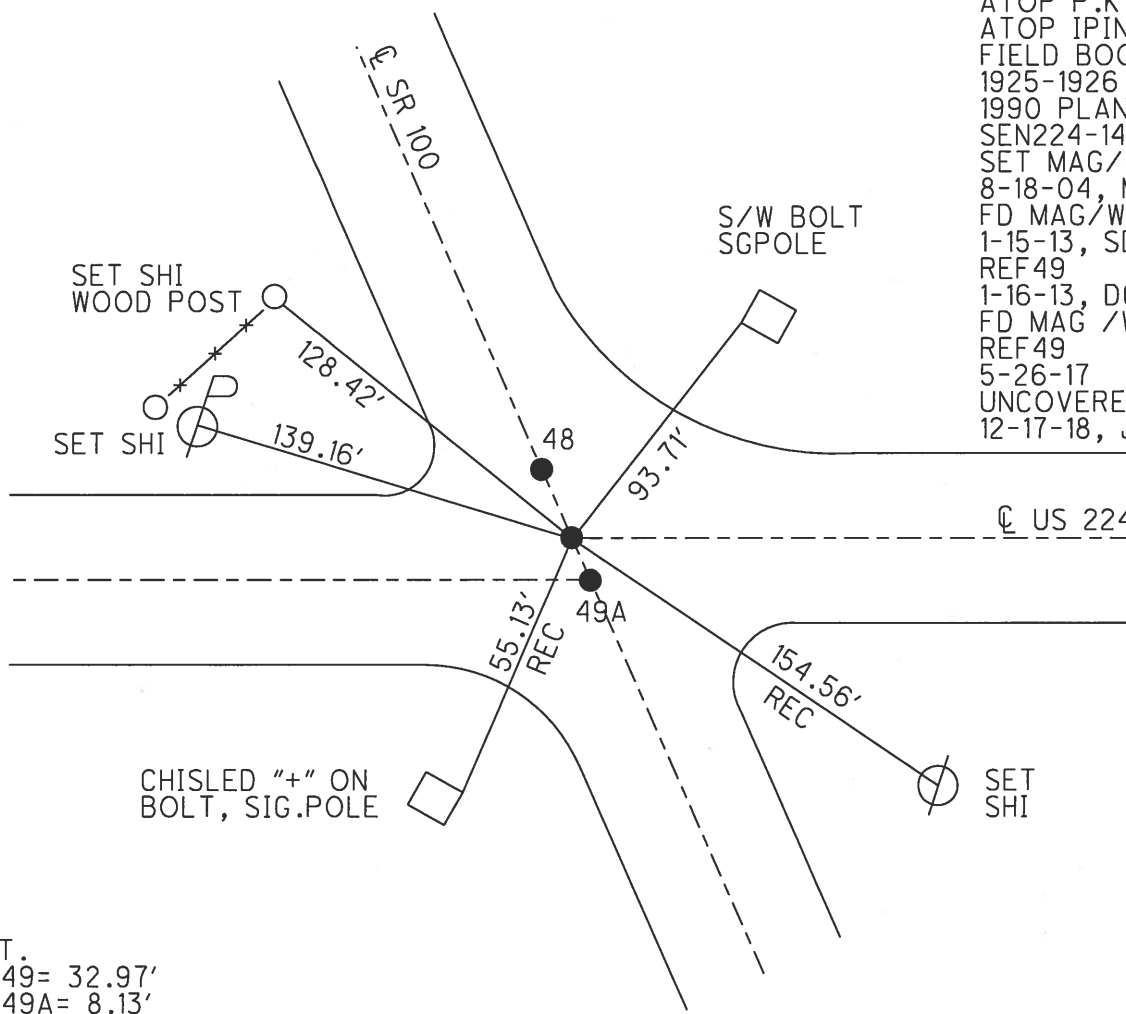
STATION: 778+27.2

HORZ.DATUM: NAD83 (2011) GEOID: (2012A)

GRID: NORTHING: 515797.842 EASTING: 1788416.820



RECORD: P.I.  
 ☉ 224 EAST  
 STA: 828+43.20  
 SET P.K./WASHER  
 ATOP P.K.NAIL  
 ATOP IPIN  
 FIELD BOOK #54  
 1925-1926  
 1990 PLAN  
 SEN224-14.73  
 SET MAG/WASHER  
 8-18-04, MB  
 FD MAG/WASHER  
 1-15-13, SDC  
 REF 49  
 1-16-13, DCH  
 FD MAG /WASHER  
 REF 49  
 5-26-17  
 UNCOVERED  
 12-17-18, JFO



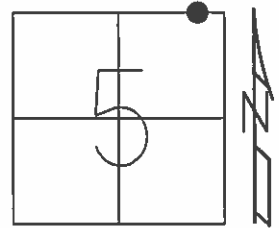
DIST.  
 48-49= 32.97'  
 49-49A= 8.13'

O.D.O.T. DISTRICT 2 SURVEY OFFICE (USE ONLY)

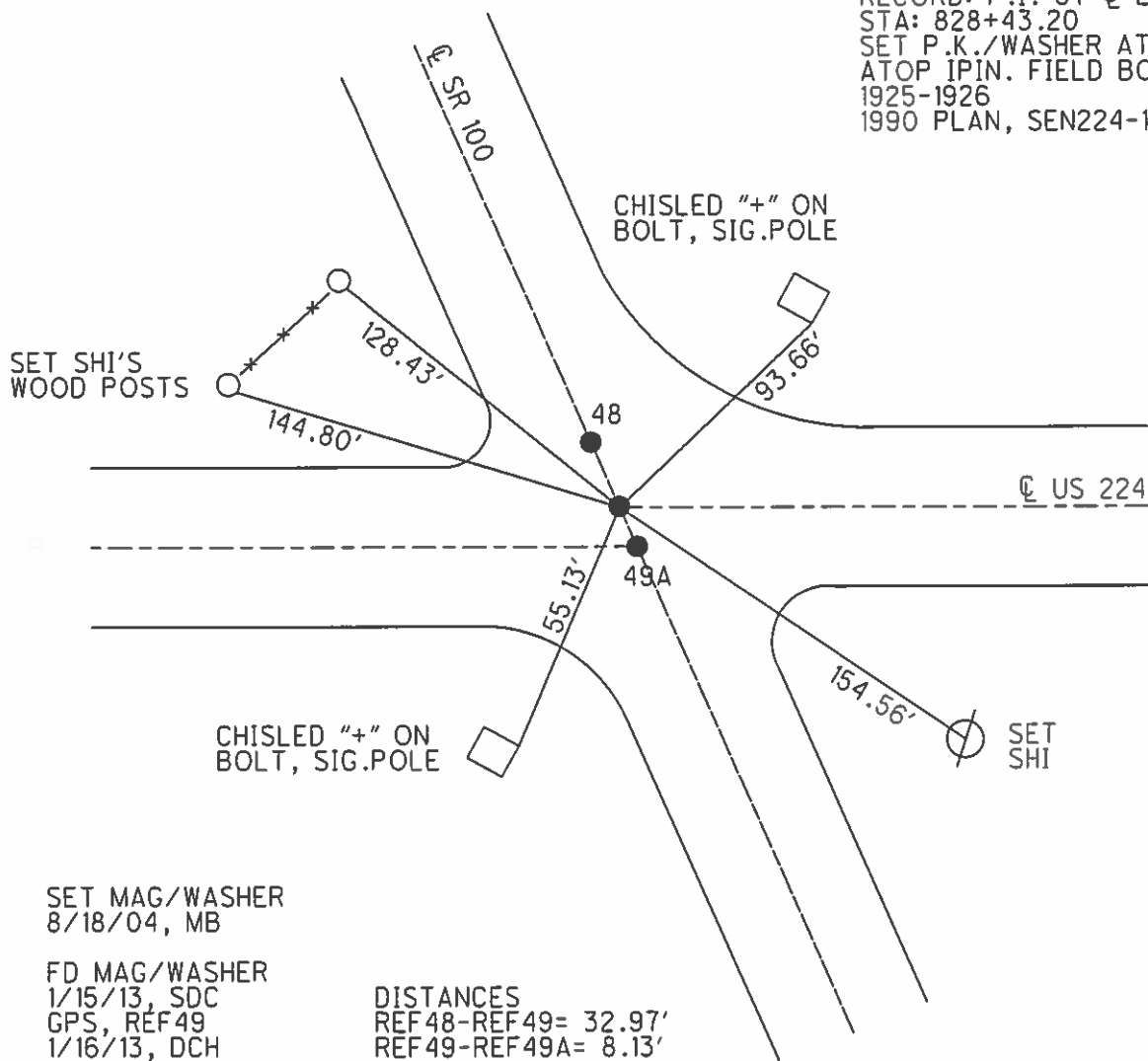
PERSONNEL	REFERENCE NO.	<u>49</u>	SHEET	<u>2</u>	OF	<u>19</u>
NOTES	<u>NUHFER</u>	DATE	<u>4/28/04</u>	ROUTE	<u>SR 224</u>	
H.C.	<u>HOMAN</u>	WEATHER	<u>FAIR</u>	COUNTY	<u>SENECA</u>	
R.C.	<u>ARMS</u>	TEMP.	<u>40°</u>	TOWNSHIP	<u>EDEN</u>	
	<u>HOOKER</u>			SECTION	<u>5</u>	
				T	<u>1</u>	R
					<u>15</u>	E

TYPE MONUMENT P.K./WASHER  
~~ON SURFACE~~ - BELOW 2"  
 LEFT - ☉ PAV'T - RIGHT -  
- TO - EDGE PAVEMENT  
 S.L.M. 778+27.2

Grid: Northing: 515797.866 Easting: 1788416.739



RECORD: P.I. of ☉ EAST  
 STA: 828+43.20  
 SET P.K./WASHER ATOP P.K.,  
 ATOP IPIN. FIELD BOOK #54  
 1925-1926  
 1990 PLAN, SEN224-14.73



O.D.O.T. DISTRICT 2 SURVEY OFFICE

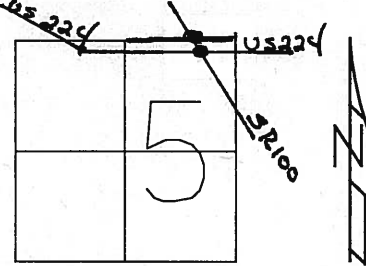
PERSONNEL

NOTES \_\_\_\_\_  
 H.C. \_\_\_\_\_  
 R.C. \_\_\_\_\_  
 \_\_\_\_\_  
 \_\_\_\_\_  
 \_\_\_\_\_

REFERENCE NO. 48  
49  
49-A  
 DATE 4-28-04  
 WEATHER CLOUDY  
 TEMP. 40°

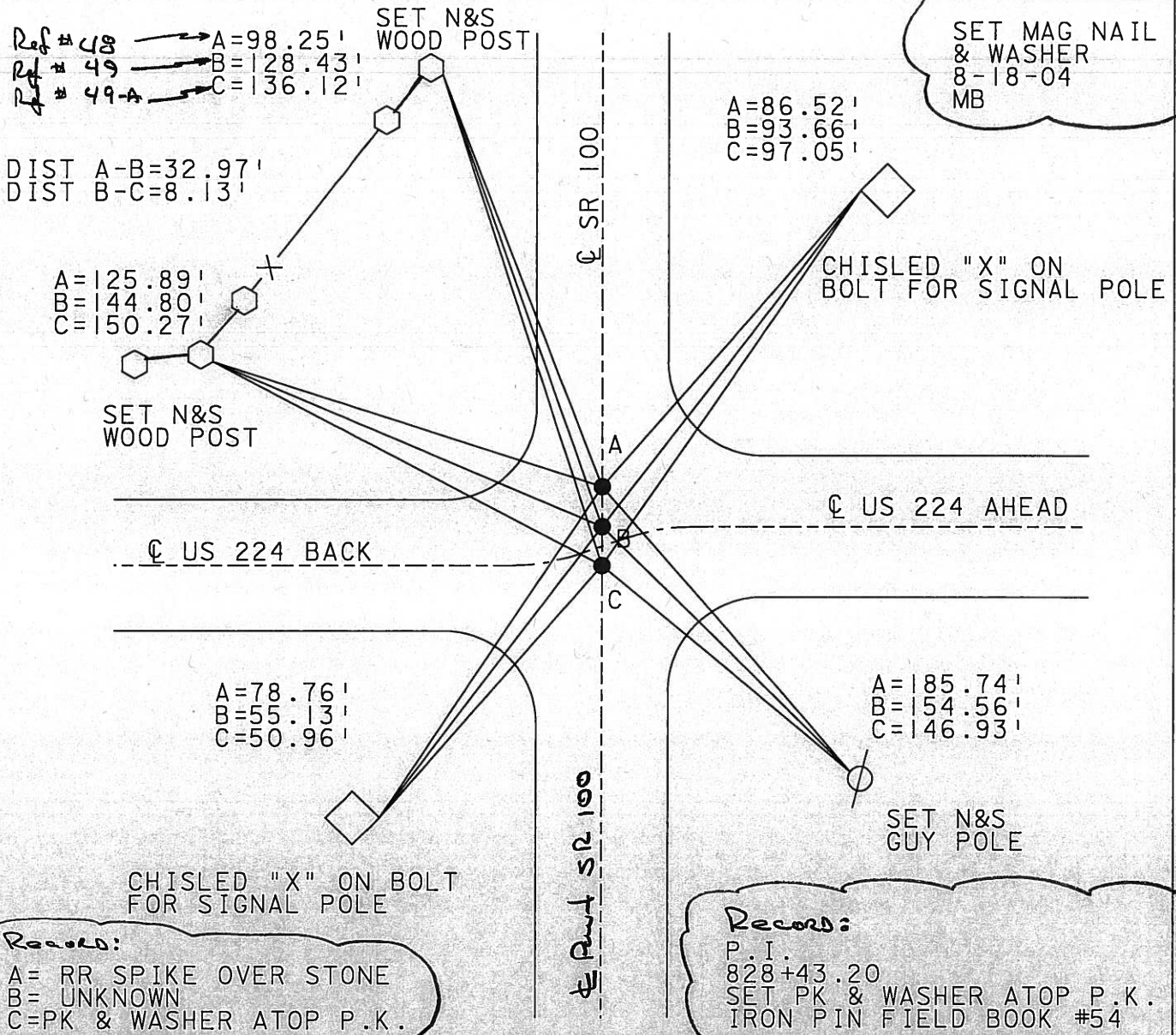
SHEET 26 OF 26  
 ROUTE US 224  
 COUNTY SENECA  
 TOWNSHIP EDEN  
 SECTION 5

T 1 N R 15 E



TYPE MONUMENT PK & WASHERS ALL  
 ON SURFACE - BELOW 2" ALL  
 LEFT - ☉ PAVT - RIGHT \_\_\_\_\_  
 \_\_\_\_\_ TO \_\_\_\_\_ EDGE PAVEMENT  
 S.L.M. 14.74 = 778+27

(49)



County Seneca S.R. # 224

Date 6/23/82

Township Eden

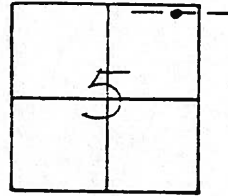
Weather sunny

Section 5

Temp. 65°

T/LN, R/S E

Personnel Cronin



Ripple

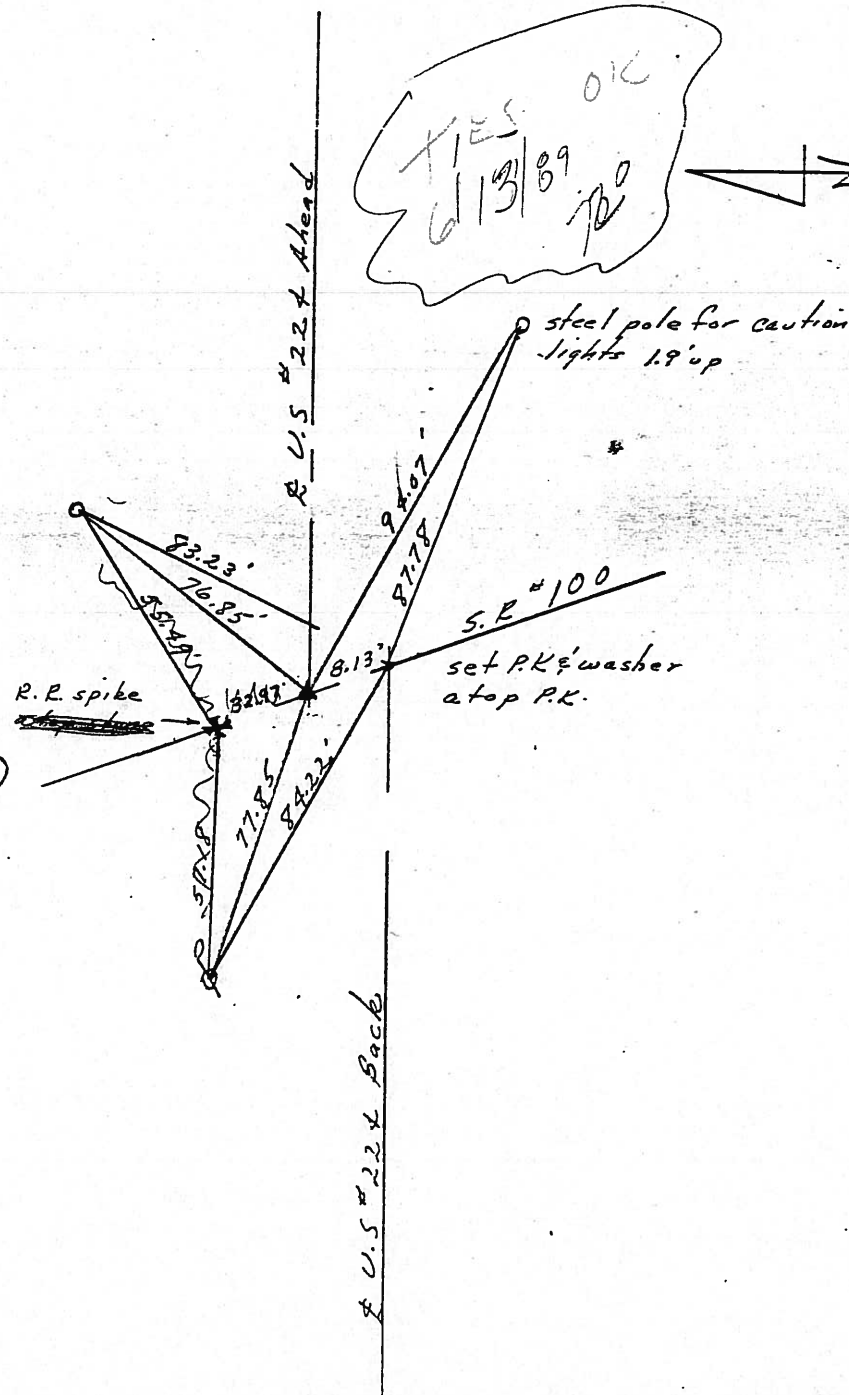
Geyman

Mosser

Barbour

#49

TIES OK  
6/13/89  
70°



P.I  
828+43.20  
set P.K. & washer atop P.K.  
I.PIN - FIELD BOOK #54 (FROM LOFT)

County Seneca S.R. # 224

Date 6/23/82

Township Eden

Weather sunny

Section 5

Temp. 65°

T/N, R/E

Personnel Cronin

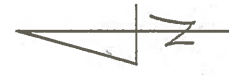
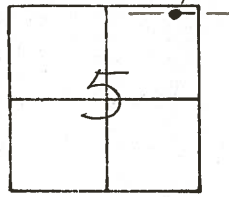
Ripple

Geyman

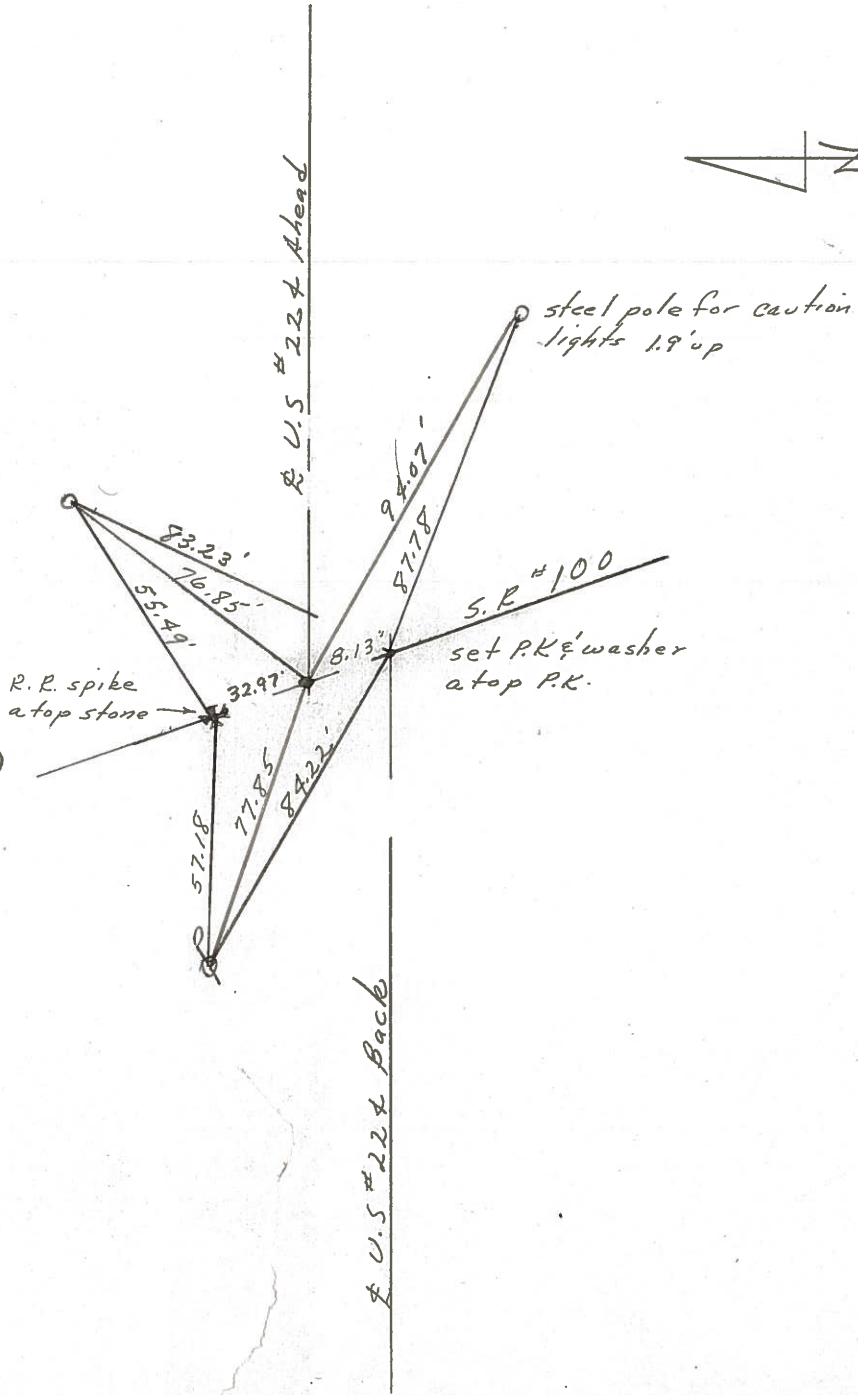
Mosser

Barbour

#49



P.I  
828+43.20  
set P.K & washer atop P.K.  
I. PIN - FIELD BOOK #54 (FROM LOFT)





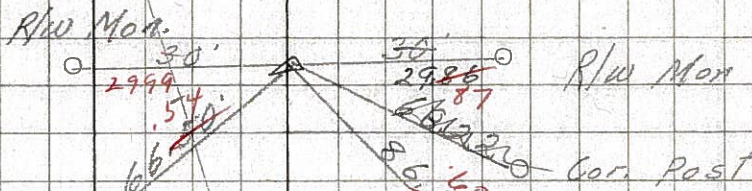
PERSONNEL	TITLE	PERSONNEL	TITLE
Schneider		Potts	
Mosser			
Barbour			
Raddino			

COUNTY Seneca DATE 3-19-68  
 S. R. U.S. 22A to Attica WEATHER Fair  
 SEC. S.R. # 100 East TEMP. 50°

DESCRIPTION Ties for control points JOB NO. \_\_\_\_\_  
 LEFT CENTER LINE RIGHT

51

P.I. # 3  
 R.R. spk.  
 861+85.27

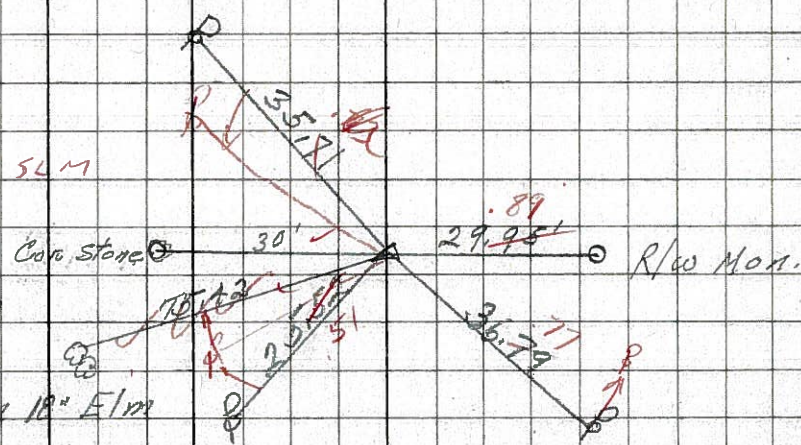


5/3/82  
 sunny 58°

861+85.27  
 4+60  
 865+45

50

P.I. # 2  
 835+41.98  
 P.K. Nail  
 cor store sec 32 & 33



835 54M

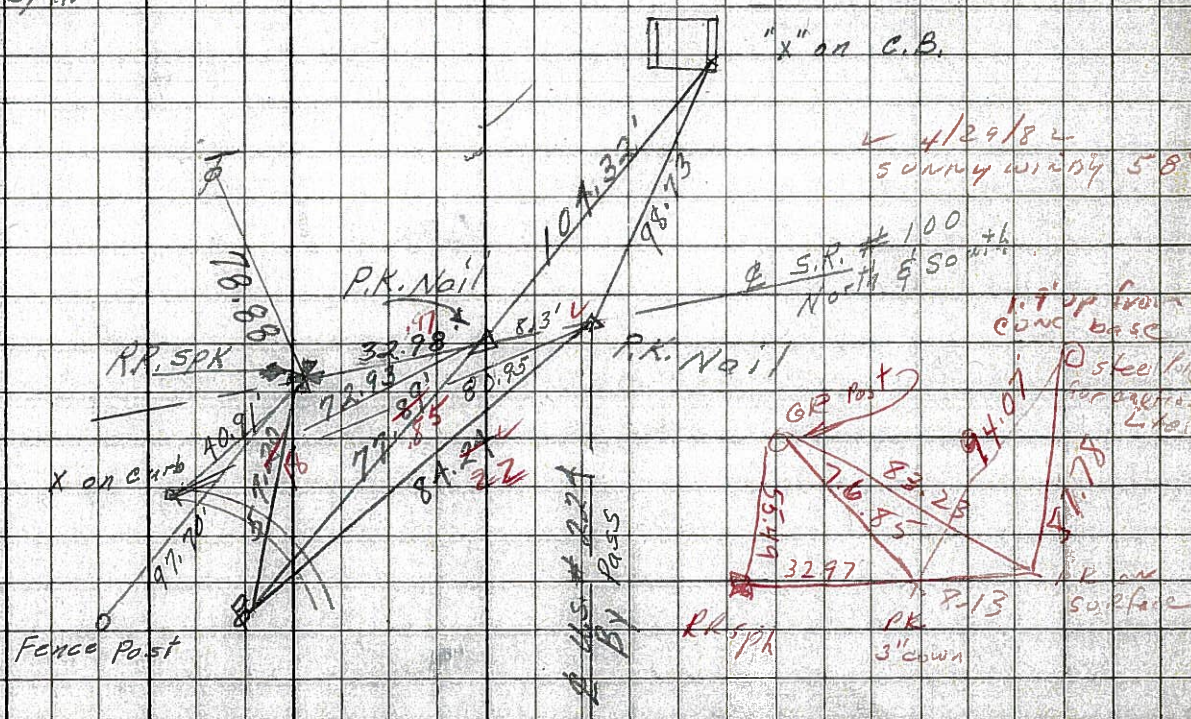
8591  
 Reset small spk.

49-A

49

48

P.I. # 1  
 828+43.20



4/29/82  
 sunny windy 58°

8590