

O.D.O.T. DISTRICT 2 SURVEY OFFICE (USE ONLY)

PERSONNEL

REFERENCE NO. 49 A

SHEET 3 OF 19

NOTES RHOADES DATE 5/26/17
 H.C. O'DONNELL WEATHER CLOUDY
 R.C. CARSON TEMP. 63°

ROUTE SR 224
 COUNTY SENECA
 TOWNSHIP EDEN
 SECTION 5

DWG BY MILLER PID 102819

T 1 N R 15 E

TYPE MONUMENT P.K.SHANK

ON SURFACE - ~~BELOW~~ ON

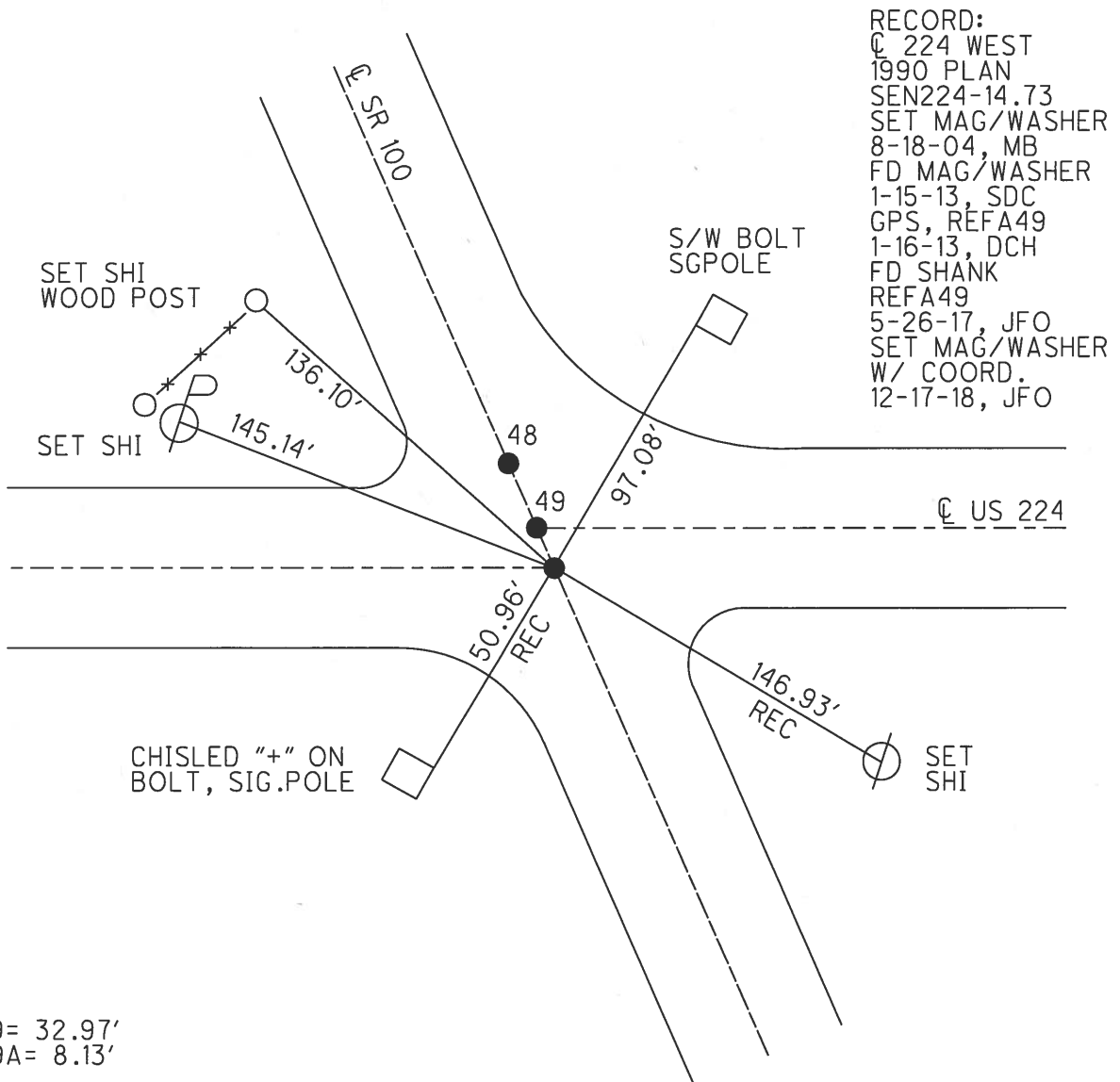
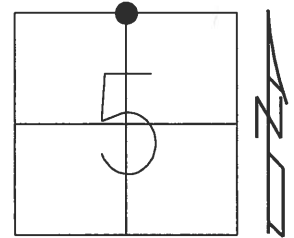
OFFSET \odot PAVEMENT ON LT : RT

- TO - EDGE PAVEMENT

STATION: 778+27.2

HORZ.DATUM: NAD83 (2011) GEOID: (2012A)

GRID: NORTHING: 515790.540 EASTING: 1788420.473

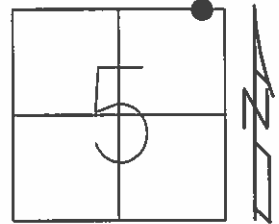


DIST.
 48-49= 32.97'
 49-49A= 8.13'

O.D.O.T. DISTRICT 2 SURVEY OFFICE (USE ONLY)

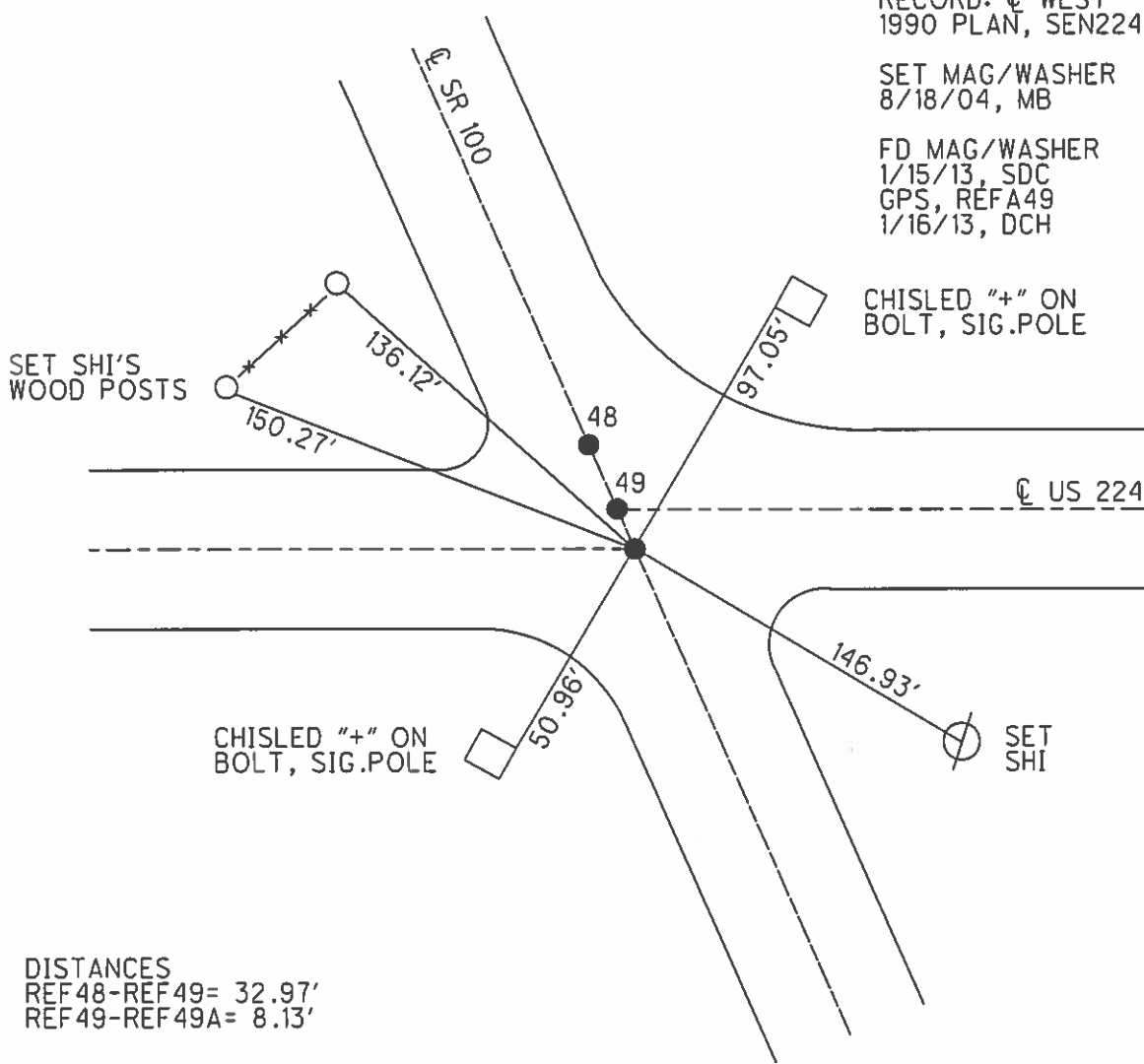
PERSONNEL	REFERENCE NO.	<u>49 A</u>	SHEET	<u>3</u>	OF	<u>19</u>
NOTES	<u>NUHFER</u>	DATE	<u>4/28/04</u>	ROUTE	<u>SR 224</u>	
H.C.	<u>HOMAN</u>	WEATHER	<u>FAIR</u>	COUNTY	<u>SENECA</u>	
R.C.	<u>ARMS</u>	TEMP.	<u>40°</u>	TOWNSHIP	<u>EDEN</u>	
	<u>HOOKE</u>			SECTION	<u>5</u>	
				T	<u>1</u>	R
				N	<u>15</u>	E

TYPE MONUMENT P.K./WASHER
~~ON SURFACE~~ - BELOW 2"
 LEFT - ☉ PAV'T - RIGHT -
- TO - EDGE PAVEMENT
 S.L.M. 778+27.2



Grid: Northing: 515790.627 Easting: 1788420.378

RECORD: ☉ WEST
 1990 PLAN, SEN224-14.73
 SET MAG/WASHER
 8/18/04, MB
 FD MAG/WASHER
 1/15/13, SDC
 GPS, REFA49
 1/16/13, DCH



DISTANCES
 REF48-REF49= 32.97'
 REF49-REF49A= 8.13'

O.D.O.T. DISTRICT 2 SURVEY OFFICE

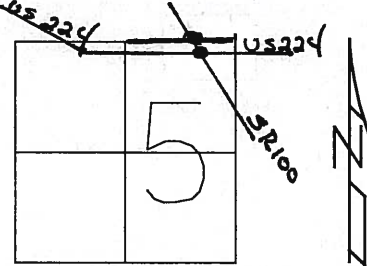
PERSONNEL

NOTES _____
 H.C. _____
 R.C. _____

REFERENCE NO. ⁴⁸49
_{49-A}
 DATE 4-28-04
 WEATHER CLOUDY
 TEMP. 40°

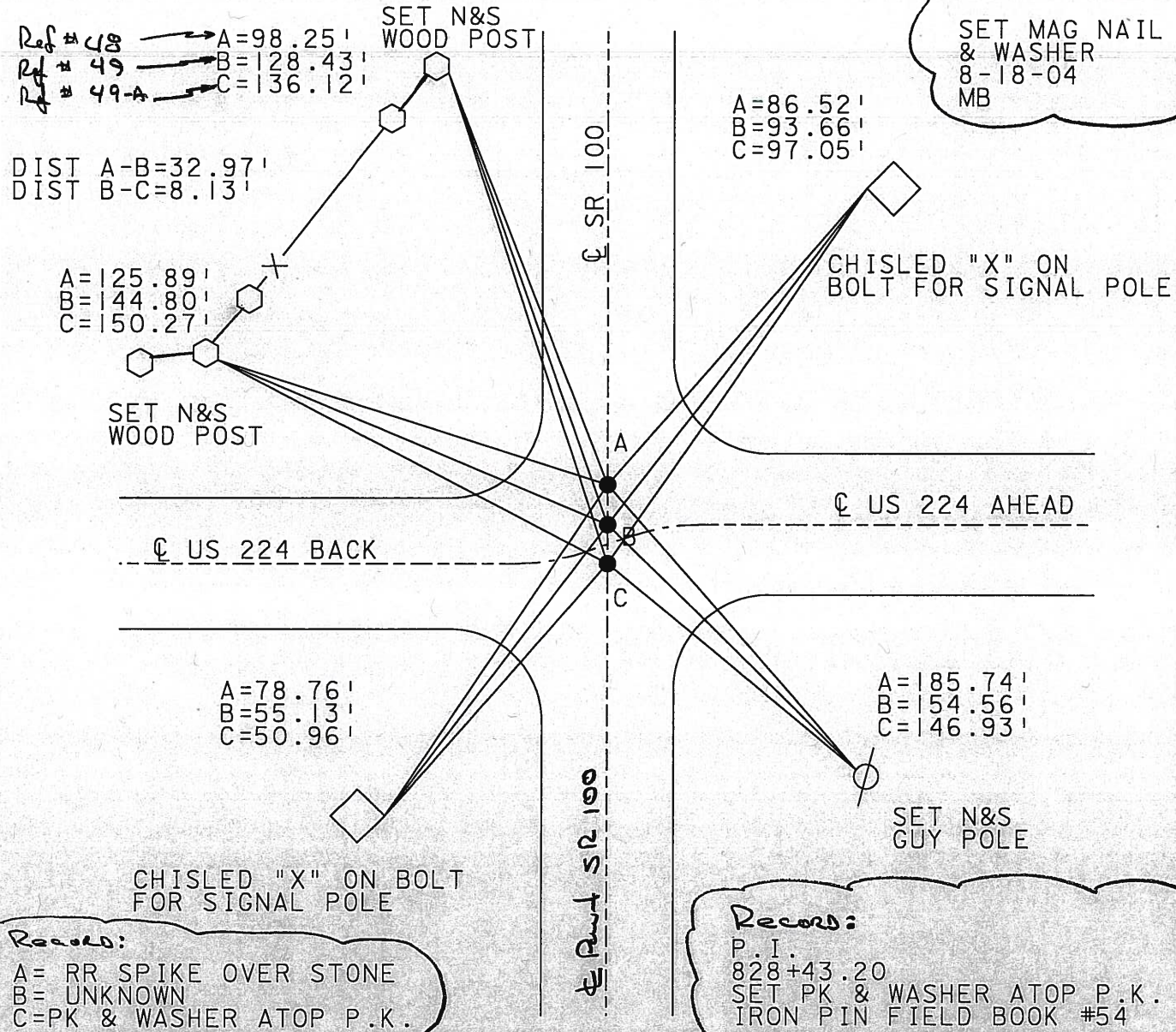
SHEET 26 OF 26
 ROUTE US 224
 COUNTY SENECA
 TOWNSHIP EDEN
 SECTION 5

T 1 N R 15 E



TYPE MONUMENT PK & WASHERS ALL
 ON SURFACE - BELOW 2" ALL
 LEFT - Q PAV'T - RIGHT _____
 _____ TO _____ EDGE PAVEMENT
 S.L.M. 14.74 = 778+27

49-A



County Seneca S.R. # 224

Date 6/23/82

Township Eden

Weather sunny

Section 5

Temp. 65°

T/N, R/E

Personnel Cranin

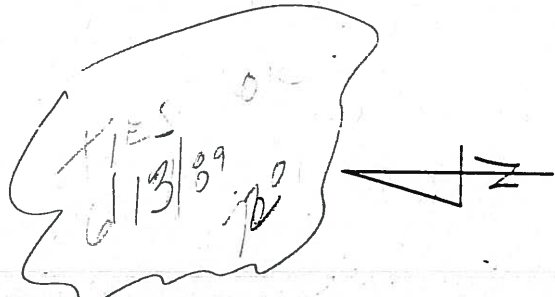
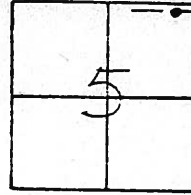
Ripple

#49-A

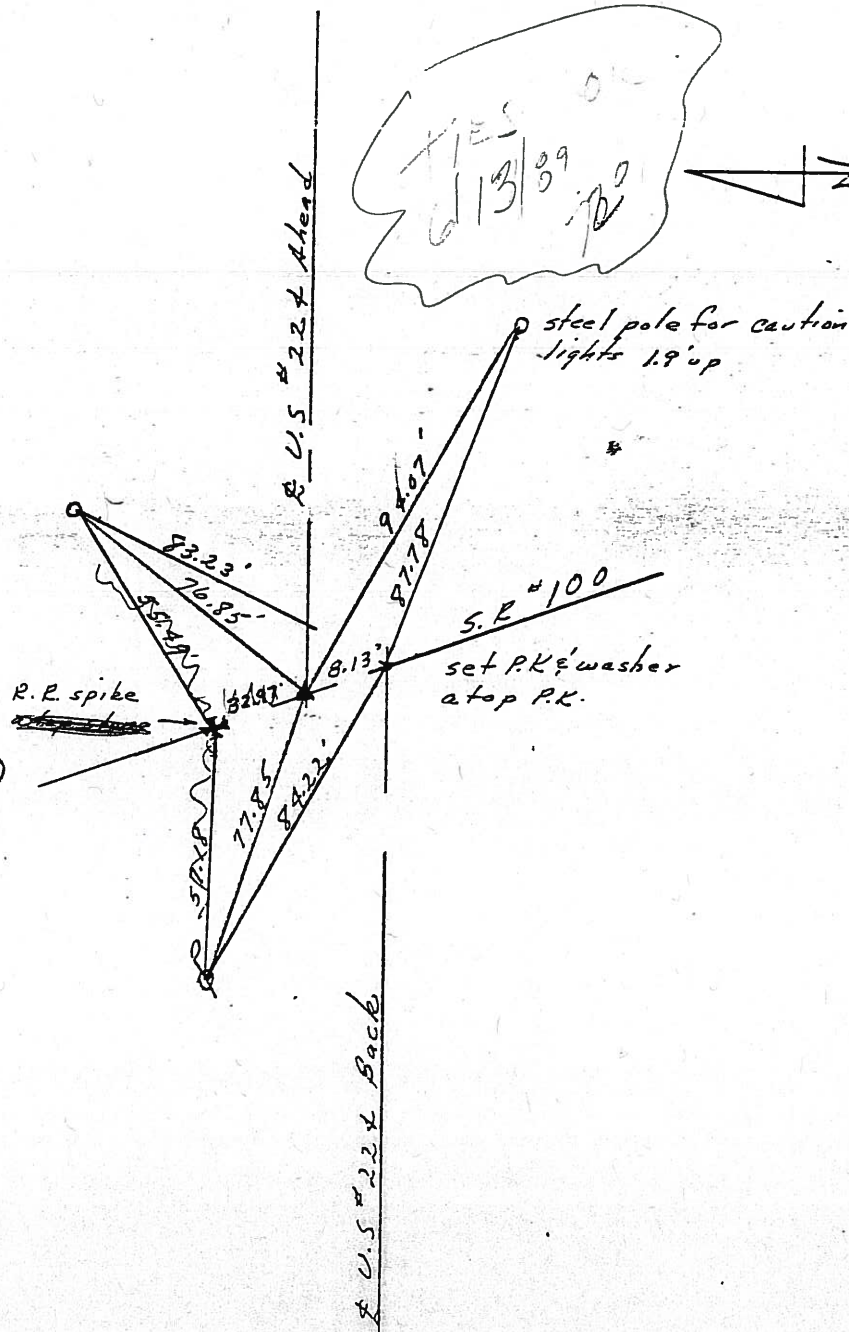
Geyman

Mosser

Barbour



P.I
228+43.20
set P.K. & washer atop P.K.
I. PIN - FIELD BOOK #54 (FROM LOFT)



County Seneca S.R. # 224

Date 6/23/82

Township Eden

Weather sunny

Section 5

Temp. 65°

T/N, R/E

Personnel Cronin

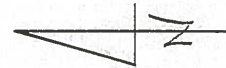
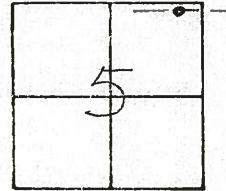
Ripple

Geyman

Mosser

Barbour

#49-A

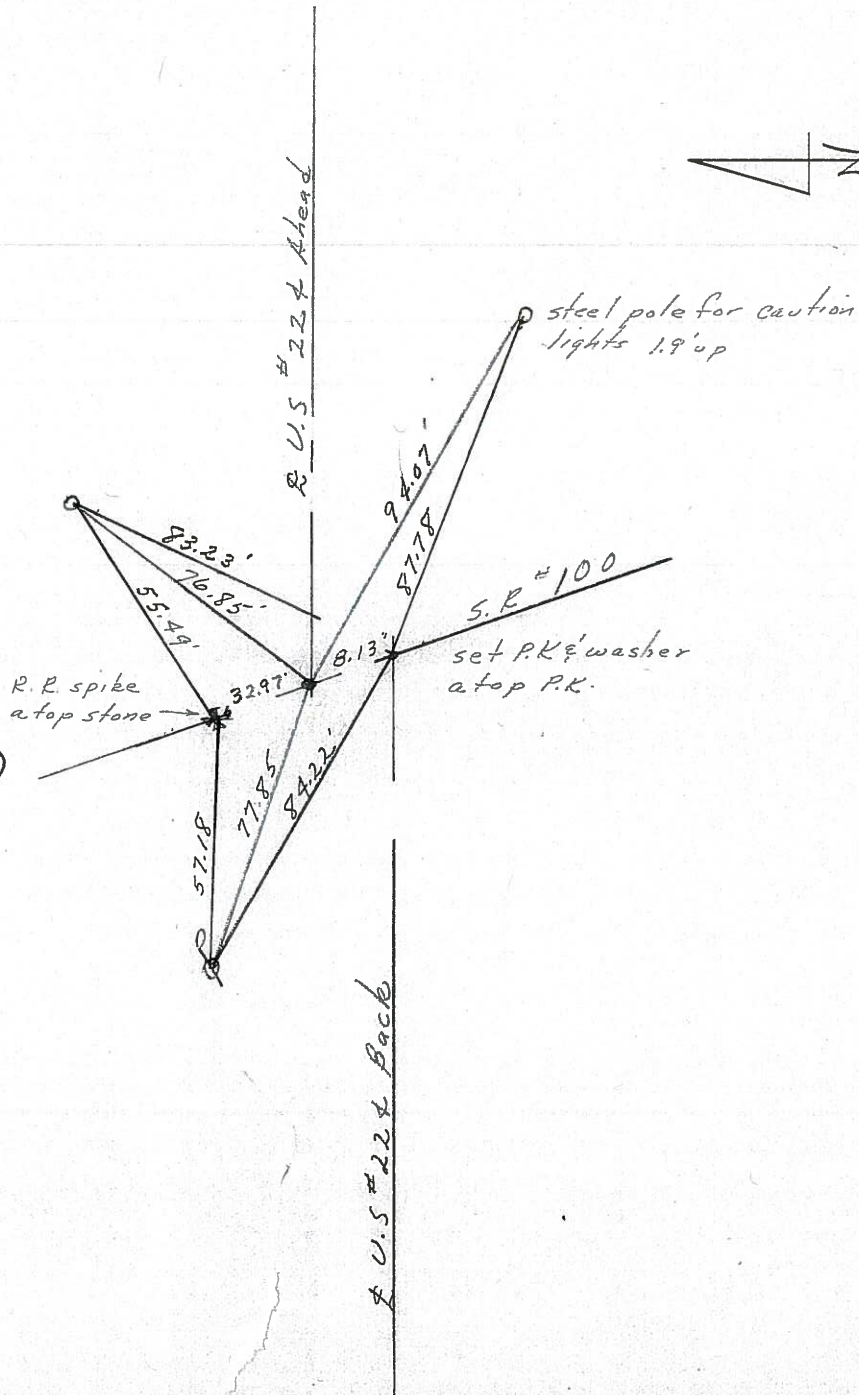


P.I

828+43.20

set P.K & washer atop P.K.

I. PIN - FIELD BOOK #54 (From LOFT)



PERSONNEL TITLE PERSONNEL TITLE
Schneider _____ Potts _____
Mosser _____
Barbour _____
Redding _____

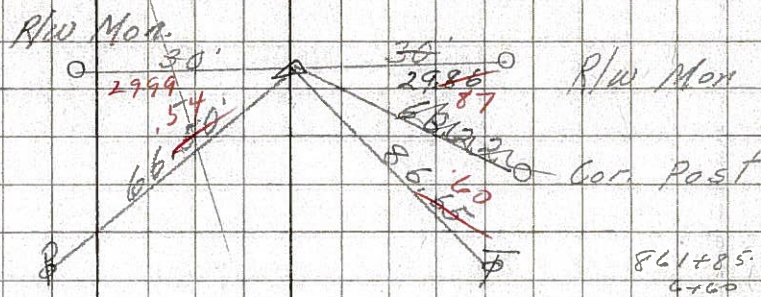
COUNTY Seneca DATE
S. R. U.S. 224 WEATHER Fair
6 Attica
SEC. S.R.# 100 East TEMP. 50°

DESCRIPTION Ties for Control Points LEFT CENTER LINE RIGHT JOB NO.

51

P.I.# 3
R.R. SPK.
861+85.27

Reset small spk.
8592



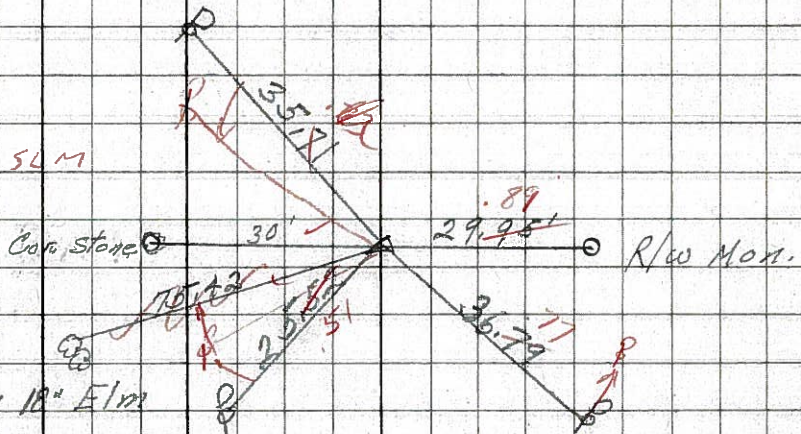
5/3/82
sunny 58°

861+85.27
4+60
865+45

50

P.I.# 2
835+41.98
P.K. Nail
Cor. stone sec 3 25.33
Sec-5 & 4 30' North
of P.I. twin 18" Elm

Reset small spk.
8591



835 54M

4/29/82
sunny windy 38°

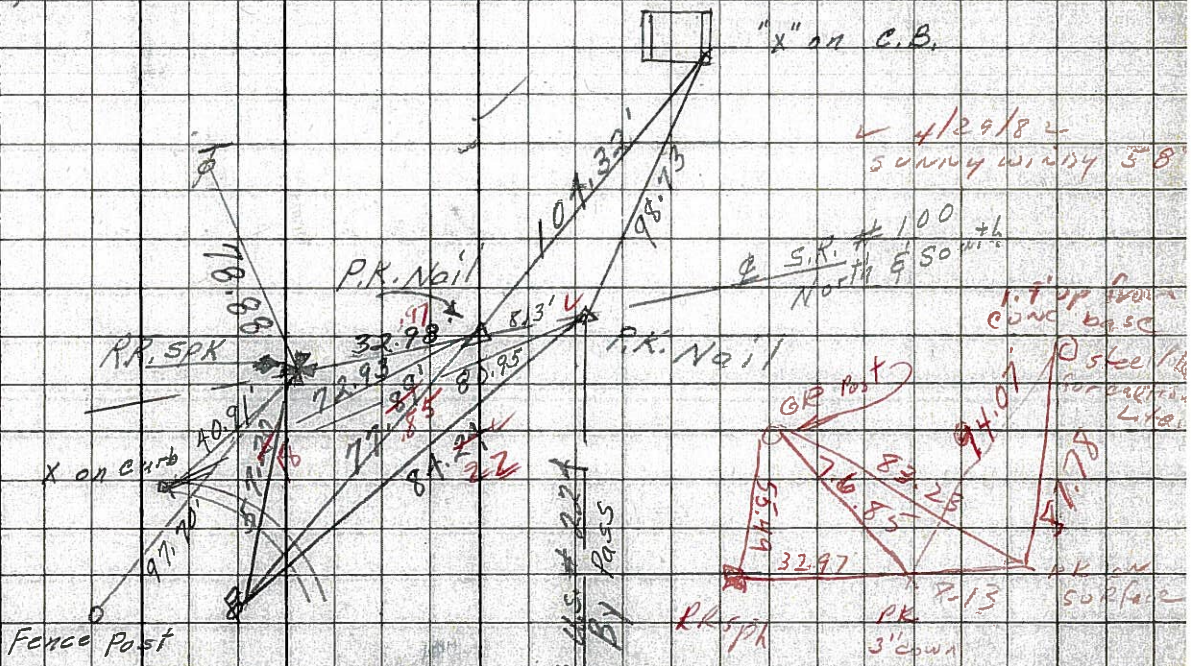
49-A

49

48

P.I.# 1
828+43.20

8590



S.R.# 100
North 50' with

tip from
conc base
steel pipe
for ball
L.H.

U.S. 224
By Pass

P.K. on
surface
3" down