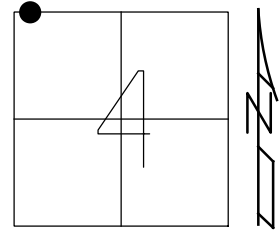
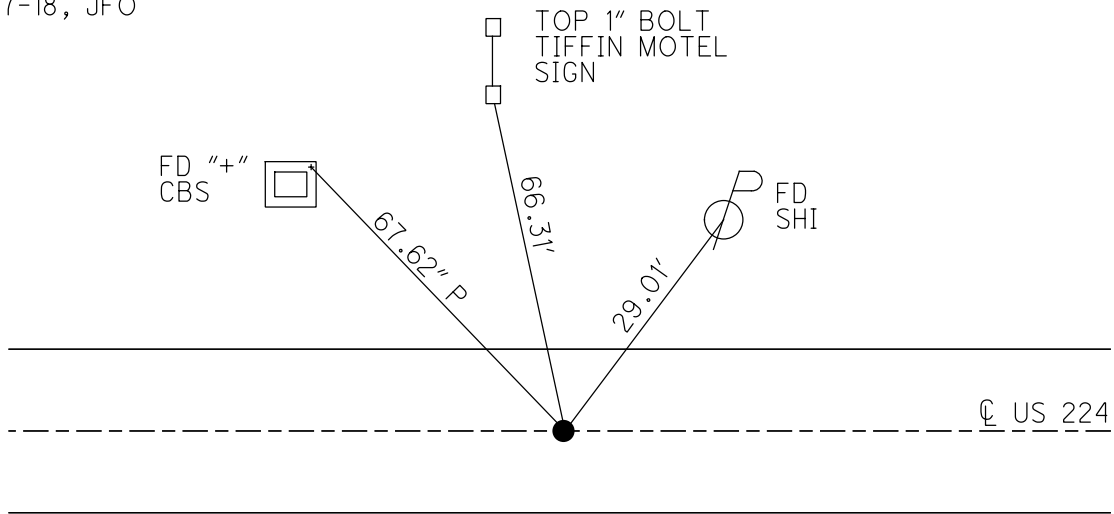


O.D.O.T. DISTRICT 2 SURVEY OFFICE (USE ONLY)

| | | |
|--|------------------------------|-----------------------------|
| PERSONNEL | REFERENCE NO. <u>50</u> | SHEET <u>4</u> OF <u>19</u> |
| NOTES <u>RHOADES</u> | DATE <u>5/26/17</u> | ROUTE <u>SR 224</u> |
| H.C. <u>O'DONNELL</u> | WEATHER <u>CLOUDY</u> | COUNTY <u>SENECA</u> |
| R.C. <u>CARSON</u> | TEMP. <u>63°</u> | TOWNSHIP <u>EDEN</u> |
| | | SECTION <u>4</u> |
| DWG BY <u>MILLER</u> | PID <u>102819</u> | T <u>1</u> N R <u>15</u> E |
| TYPE MONUMENT <u>PK NAIL</u> | | |
| ON SURFACE - BELOW <u>2"</u> | | |
| OFFSET <u>11.9'</u> <u>TO</u> <u>RT</u> <u>EDGE PAVEMENT</u> | | |
| STATION: <u>785+25.99</u> | | |
| HORZ. DATUM: <u>NAD83 (2011)</u> | GEOID: <u>NAVD88 (2012A)</u> | |
| GRID: NORTHING: <u>515803.919</u> | EASTING: <u>1789115.556</u> | |



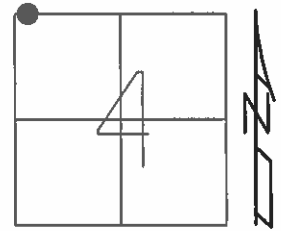
RECORD: P.I.
 SET P.K./WASHER
 ATOP BOAT SPIKE
 FD P.K./WASHER
 5-2-94, CHANEY
 FD P.K./WASHER
 REF50
 1-16-13, DCH
 FD P.K./NAIL
 5-26-17, JFO
 SET MAG/WASHER
 W/ COORD.
 12-17-18, JFO



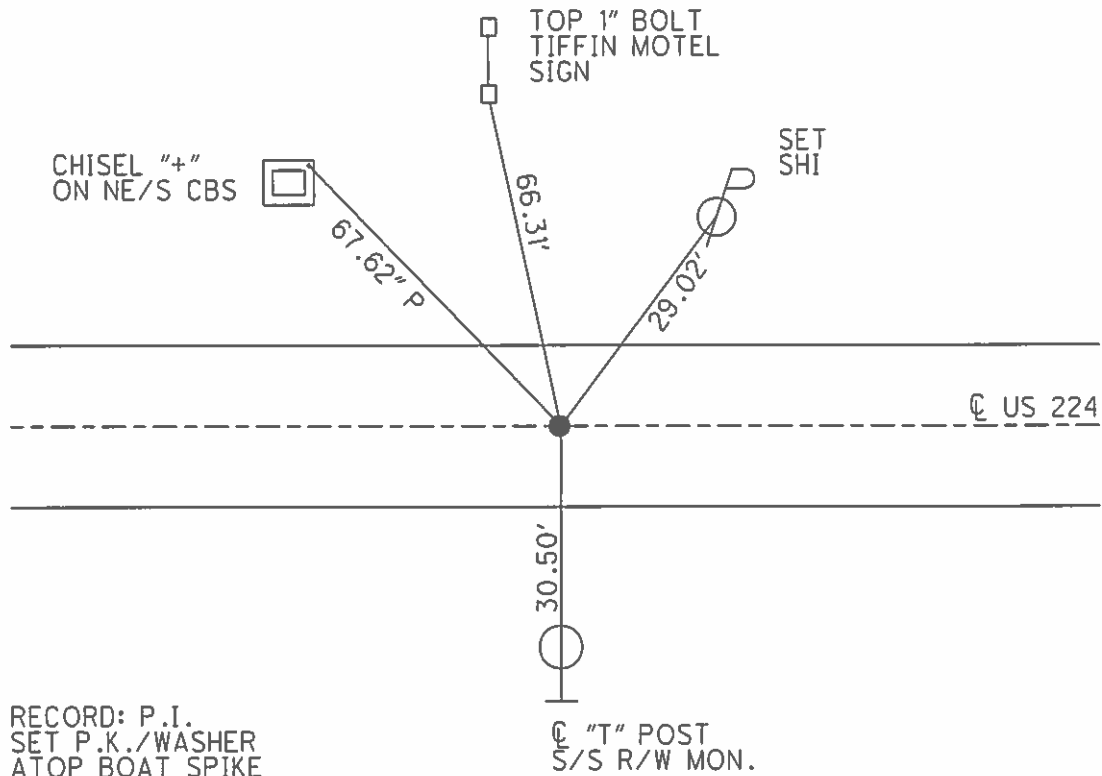
O.D.O.T. DISTRICT 2 SURVEY OFFICE (USE ONLY)

PERSONNEL _____ REFERENCE NO. 50 SHEET 4 OF 19
 NOTES NUHFER DATE 9/5/14 ROUTE SR 224
 H.C. LEU WEATHER SUNNY COUNTY SENECA
 R.C. RHOADES TEMP. 70° TOWNSHIP EDEN
 _____ SECTION 4
 _____ T 1 N R 15 E

TYPE MONUMENT P.K./WASHER
 ON SURFACE - ~~BELOW~~ 2"
 LEFT - ☉ PAV'T - RIGHT ON
11.9' TO S. EDGE PAVEMENT
 S.L.M. 785+25.99



Grid: Northing: 515803.947 Easting: 1789115.506



RECORD: P.I.
 SET P.K./WASHER
 ATOP BOAT SPIKE

FD P.K./WASHER
 5/2/94, CHANEY
 FD P.K./WASHER
 GPS, REF50
 1/16/13, DCH

O.D.O.T. DISTRICT 2 SURVEY OFFICE

PERSONNEL

REFERENCE NO. 50

SHEET 1 OF 16

NOTES Chaney

H.C. Ripple

R.C. Barbour

Geyman

DATE 5-2-94

WEATHER Fair

TEMP. 50°

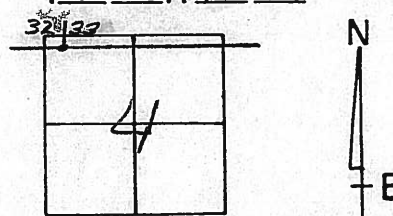
ROUTE US. 224

COUNTY SENECA

TOWNSHIP EDEN

SECTION 4

T L N R I S E



TYPE MONUMENT PK + WASHER

ON SURFACE - ~~BELOW~~ SURFACE

LEFT - CL PAV'T. - RIGHT

TO EDGE PAVEMENT

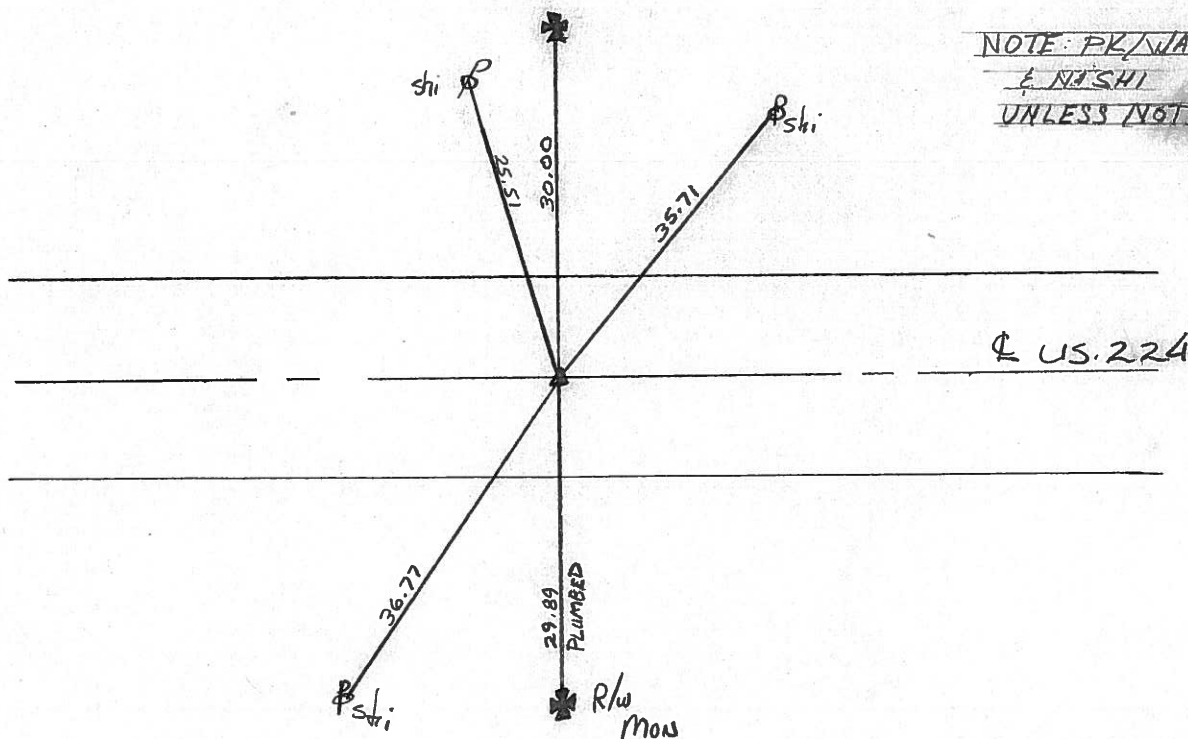
S.L.M. 786 + 28.13

PI SET PK & WASHER ATOP

BOAT SPIKE

HUB FIELD BOOK #54 (FROM LEFT)

NOTE: PK/WASH.
 & N/S HI
 UNLESS NOTED



O.D.O.T. DISTRICT 2 SURVEY OFFICE

PERSONNEL

REFERENCE NO. 50

SHEET OF

NOTES CRONIN

DRAWN 6-15-89

H.C. RIPPLE

DATE 6-13-89

ROUTE US 224

R.C. GEYMAN

WEATHER OVERCAST

COUNTY SENECA

BARBOUR

TEMP. 72°

TOWNSHIP EDEN

SECTION 4

T. NR 15 E

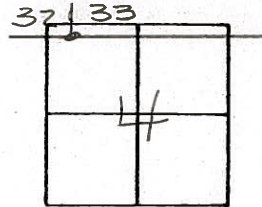
TYPE MONUMENT PK+WASHER

ON SURFACE - BELOW SURFACE

LEFT - ☉ PAV'T. - RIGHT

 TO EDGE PAVEMENT

S.L.M. 786+28.13

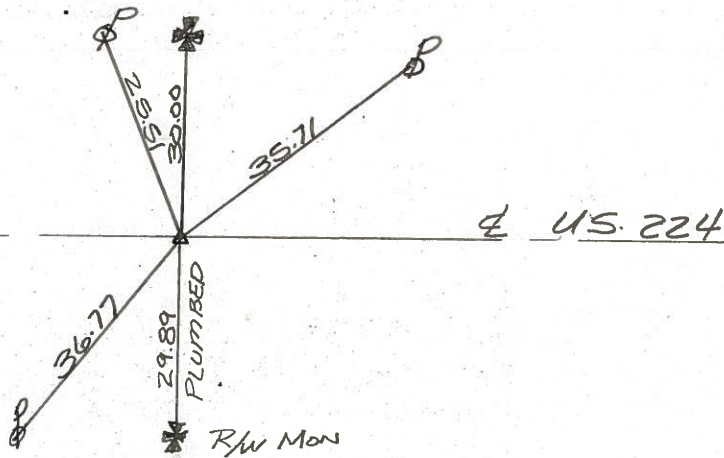


6-23-82

PI SET PK+WASHER ATOP

BOAT SPIKE

HUB FIELD BOOK # 54 (FROM LOFT.)



County Seneca S.R. # 224

Date 6/23/82

Township Eden

Weather sunny

Section 4

Temp. 65°

T/N, R/E

Personnel Cronin

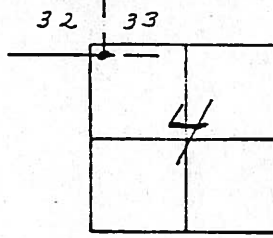
Ripple

Geyman

Masser

Barbour

#50



P.I.

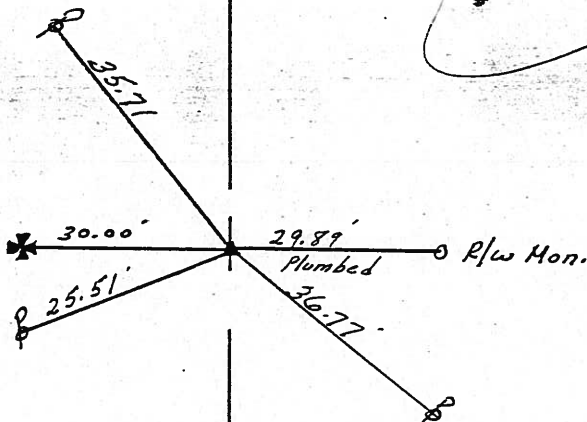
835+41.98

Set P.K. & washer atop
boat spike

HUB - FIELD Book #54 (FROM LOFT)

861+85.27
835+41.98
26+43.29

835+41.98
828+43.20
6+98.78



TIES OK
6/13/89
72°

U.S. # 329

County Seneca S.R. # 224

Date 6/23/82

Township Eden

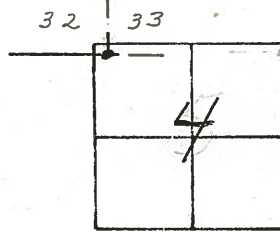
Weather sunny

Section 4

Temp. 65°

T/N, R/E

Personnel Cronin



#50

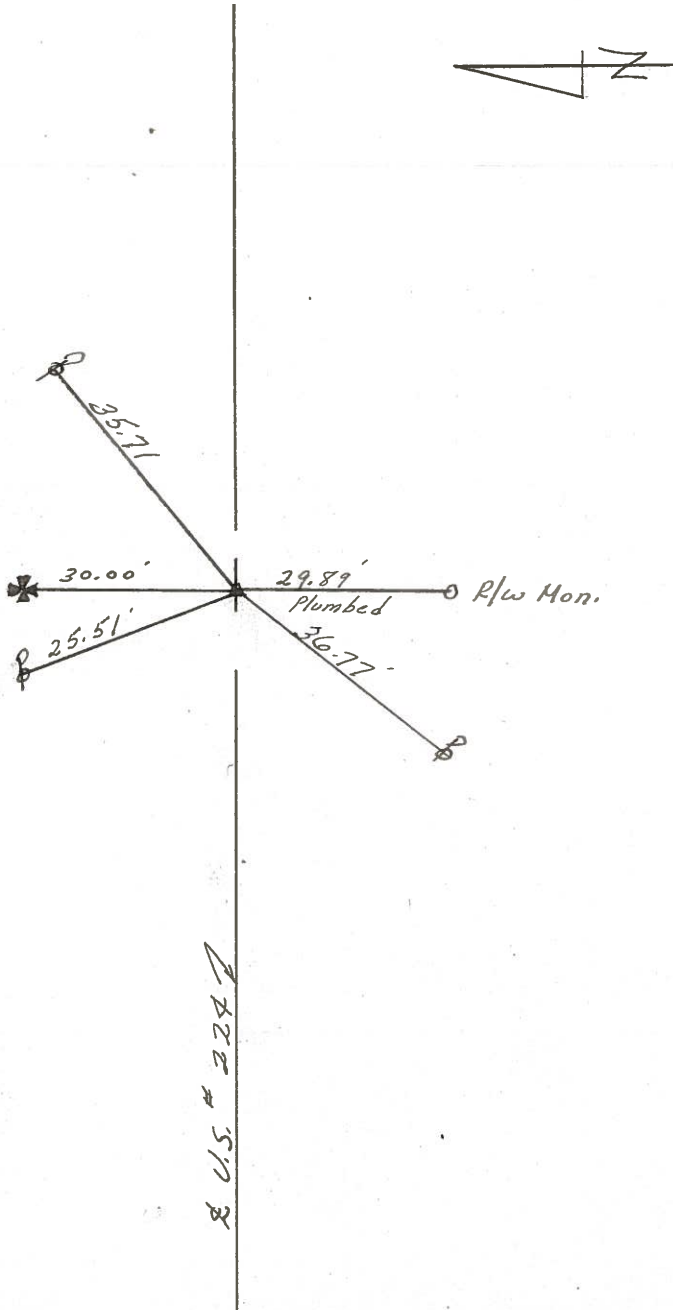
Ripple
Geyman
Mosser
Barbour

P.I.

835+41.98

Set P.K. & washer atop boat spike

HUB-FIELD BOOK #54 (FROM LOFT)

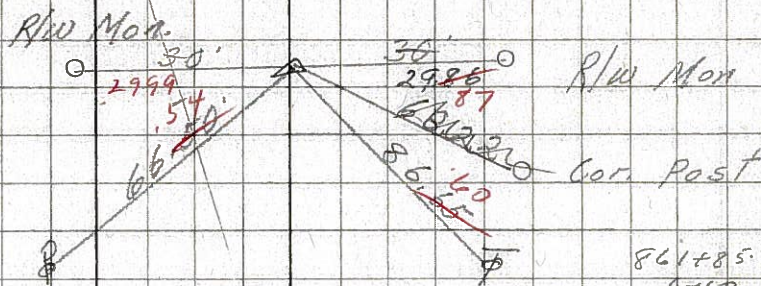


PERSONNEL TITLE PERSONNEL TITLE COUNTY Seneca DATE 7-29-68
 3-19-68
 S. R. U.S. 224 WEATHER Fair
 to Attica
 SEC. S.R. # 100 East TEMP. 50°

DESCRIPTION Ties for Control Points LEFT CENTER LINE RIGHT JOB NO.

(51)

P.I. # 3
 R.R. spk.
 861 + 85.27

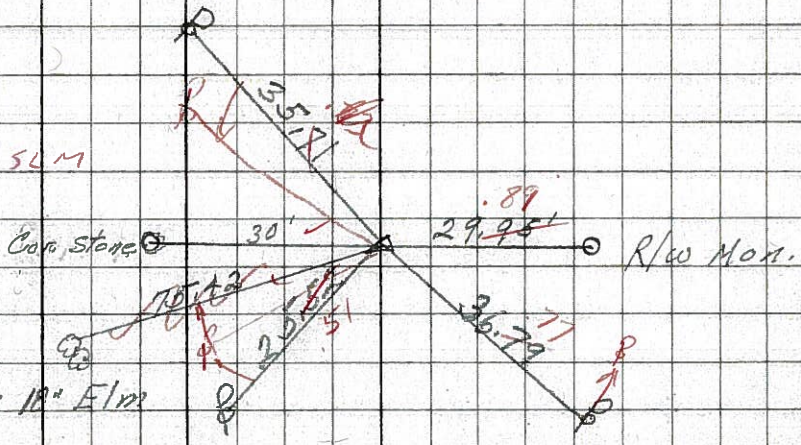


Reset small spk.
 8592

861 + 85.27
 4760
 865 + 45

(50)

P.I. # 2
 835 + 41.98
 P.K. Nail
 cor stone sec 32 & 33
 Sec - 5 & 4 30' North
 of P.I.
 twin 1 1/2" Elm



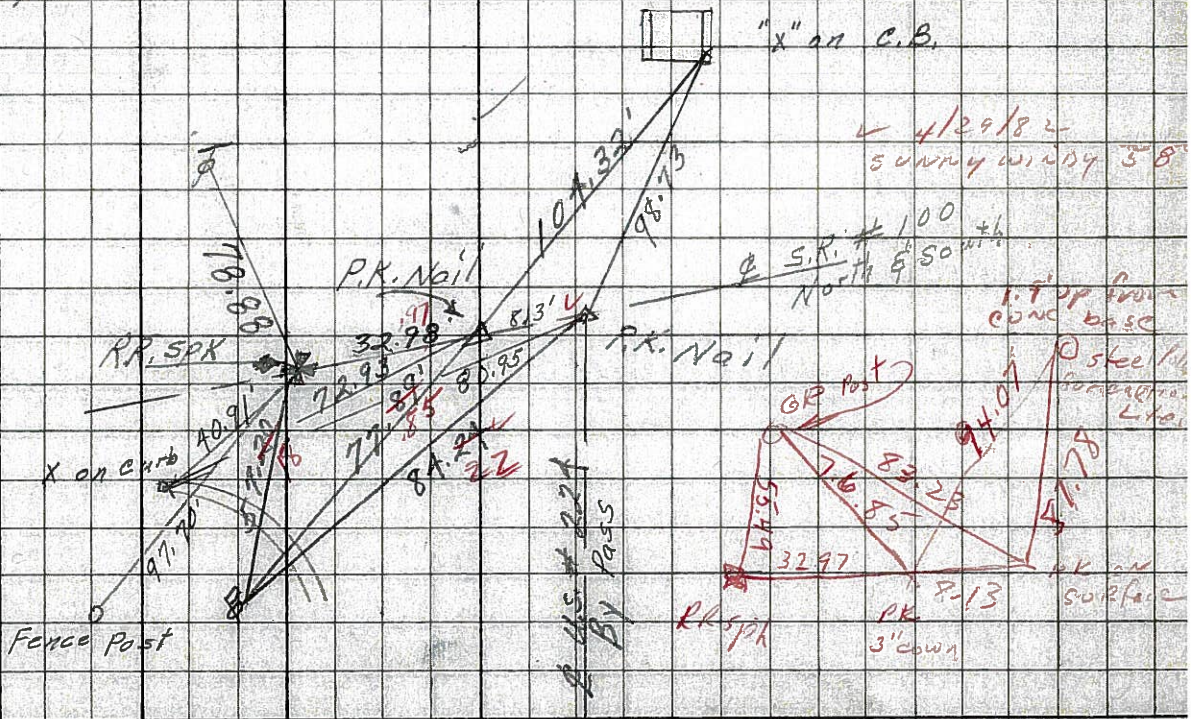
Reset small spk.
 8591

(49-A)

(49)

(48)

P.I. # 1
 828 + 43.20



8590

4/29/82 sunny windy 58°

S.R. # 100 North & 50' South

1.9' up from conc base
 steel pin for original L&L

P.K. on surface
 3' down

NEW TIES BY CRONIN JUNE 1982

PERSONNEL

TITLE

PERSONNEL

TITLE

COUNTY Seneca

DATE

KraBill

Kowaleski

Brooks

S. R. 224

WEATHER

SEC.

TEMP.

DESCRIPTION

U.S.R. 224 East of S.R. 100 To Africa

JOB NO.

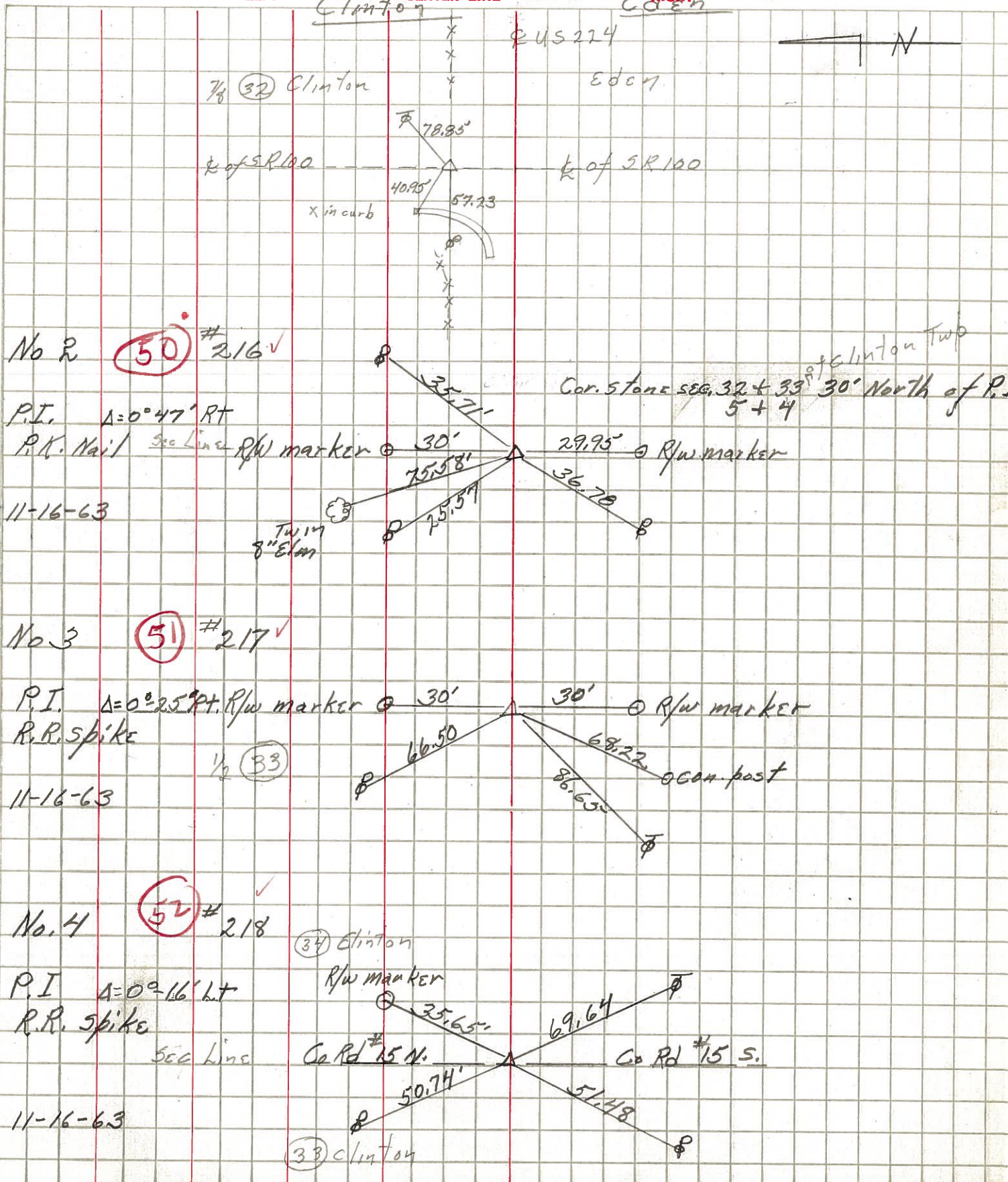
LEFT

CENTER LINE

RIGHT

Clinton

Eden



PERSONNEL TITLE PERSONNEL TITLE

COUNTY Seneca

DATE 11-24-53

S. R. 224

WEATHER

SEC. A

TEMP.

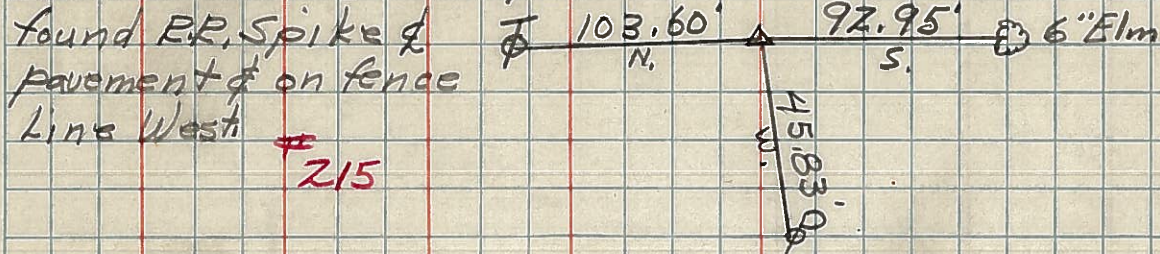
DESCRIPTION S.H. 272 From intersection S.E. 100 to S.E. 19

JOB NO. N

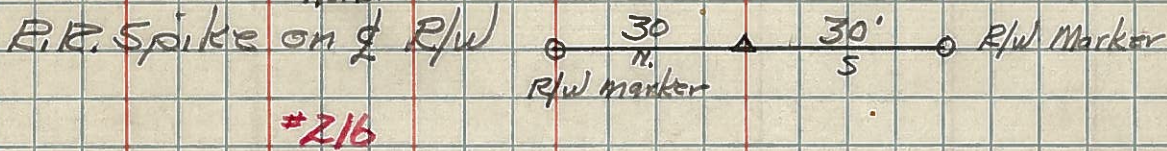
S.H. 272 Sec. A. Starting East of the intersection of S.H. 199 on E of S.H. 272 Sec. A. No stationing on this section. Plat showing control points by No. following.

No. 1

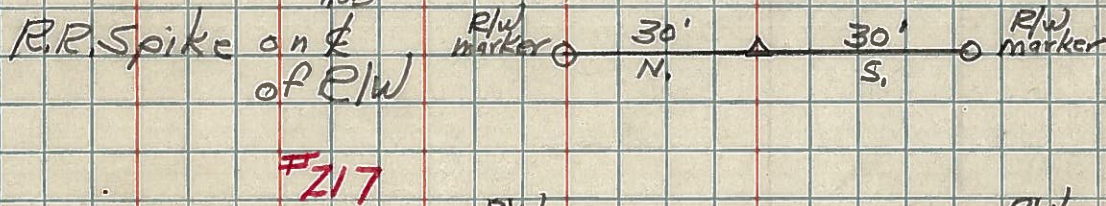
Intersection S.H. 224 & 100



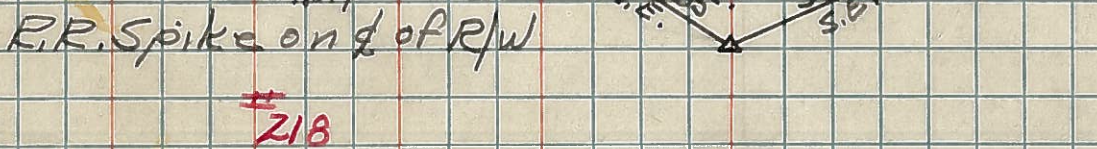
No. 2



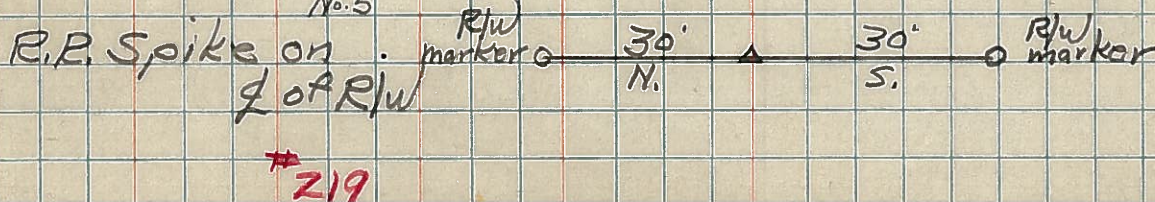
No. 3



No. 4



No. 5



PERSONNEL TITLE PERSONNEL TITLE

COUNTY Seneca DATE 11-24-53

S. R. 224 WEATHER

SEC. A TEMP.

DESCRIPTION SH. 272 From the intersection of S.R. 100 to S.R. 199 JOB NO.

LEFT CENTER LINE RIGHT

S.H. 272 Sec. A. Starting East of the intersection of S.H. 199 on E of S.H. 272 Sec. A. No stationing on this section. Plat showing control points by No. following.

No. 1
 Intersection of S.R. 224 & 100 Found R.R. Spike on E pavement for fence line West. #215
 103.60' N. 92.95' S. 6" Elm
 45.83' R.R. Spike & Part of fence line W
 45.83' W. Shi. P. Pole
 103.60' N. Shi. T. Pole
 92.95' S. 6" Elm
 Did not Find

50 No. 2
 R.R. Spike on E of R/W #216
 30' N. 30' S. R/W marker R/W marker
 Did not Find

51 No. 3
 R.R. Spike on E of R/W #217
 30' N. 30' S. R/W marker R/W marker
 Did not Find

52 No. 4
 R.R. Spike on E of R/W #218
 35.65' N.E. 36.3' S.E. R/W marker R/W marker

53 No. 5
 R.R. Spike on E of R/W #219
 30' N. 30' S. R/W marker R/W marker