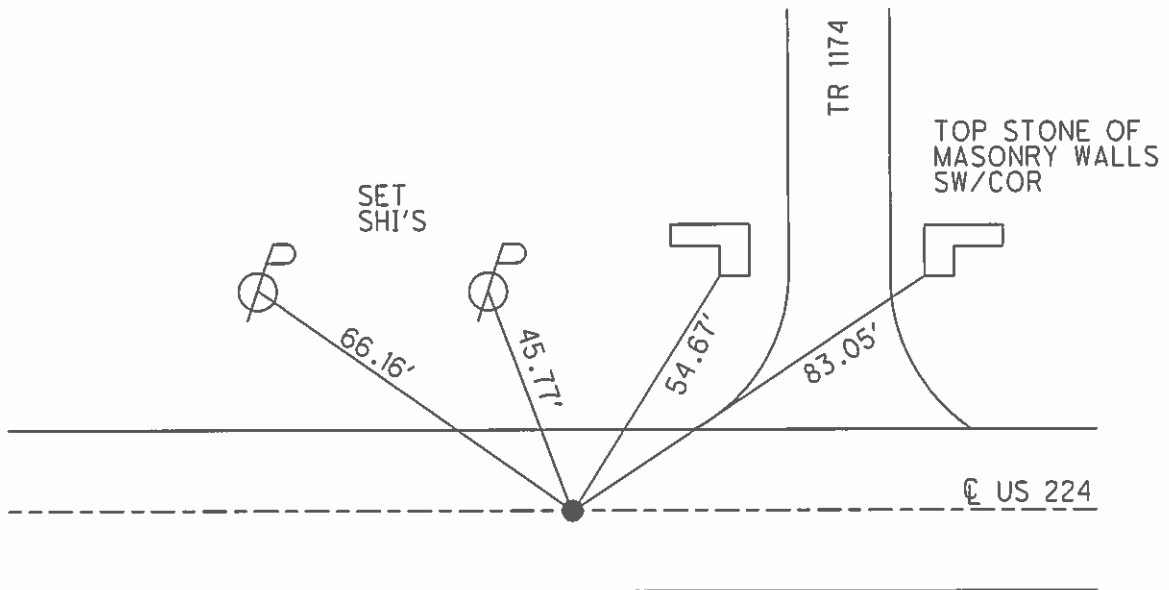
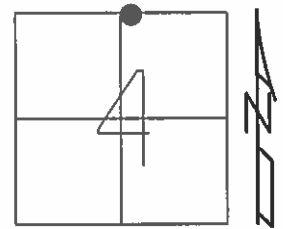


O.D.O.T. DISTRICT 2 SURVEY OFFICE (USE ONLY)

PERSONNEL _____ REFERENCE NO. 51 SHEET 5 OF 19
 NOTES NUHFER DATE 9/5/14 ROUTE SR 224
 H.C. LEU WEATHER SUNNY COUNTY SENECA
 R.C. RHOADES TEMP. 70° TOWNSHIP EDEN
 SECTION 4
 T 1 N R 15 E

TYPE MONUMENT P.K./WASHER
~~ON SURFACE~~ - BELOW 1"
 LEFT - ☉ PAV'T - RIGHT ON
10.2' TO RT EDGE PAVEMENT
 S.L.M. 811+69.56
 Grid: Northing: 515792.621 Easting: 1791759.117



RECORD: P.I.
 SET P.K./WASHER
 ATOP BOAT SPIKE
 ATOP R.R.SPIKE

FD P.K./WASHER
 5/2/94
 SET P.K./WASHER
 9/28/94, MRC
 FD P.K./WASHER
 GPS, REF51
 1/16/13, DCH

SET MAG/WASHER
 12/15/14
 GPS, NEWREF51
 7/13/15, JFO

O.D.O.T. DISTRICT 2 SURVEY OFFICE

PERSONNEL

REFERENCE NO. 51

SHEET 2 OF 16

NOTES CHANNEY

H.C. RIPLLE

R.C. BARBOUR

DATE 5-2-94

WEATHER FAIR

TEMP. +50

ROUTE US. 224

COUNTY SENECA

TOWNSHIP EDEN

SECTION 4

Set P.K./WASHER
9-28-94 mrc

T L N R L S E

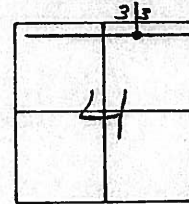
TYPE MONUMENT PK & WASHER P.I.

ON SURFACE - BELOW SURFACE

LEFT- & PAV'T. - RIGHT ON

9.5 TO RT EDGE PAVEMENT

S.L.M. 811-74



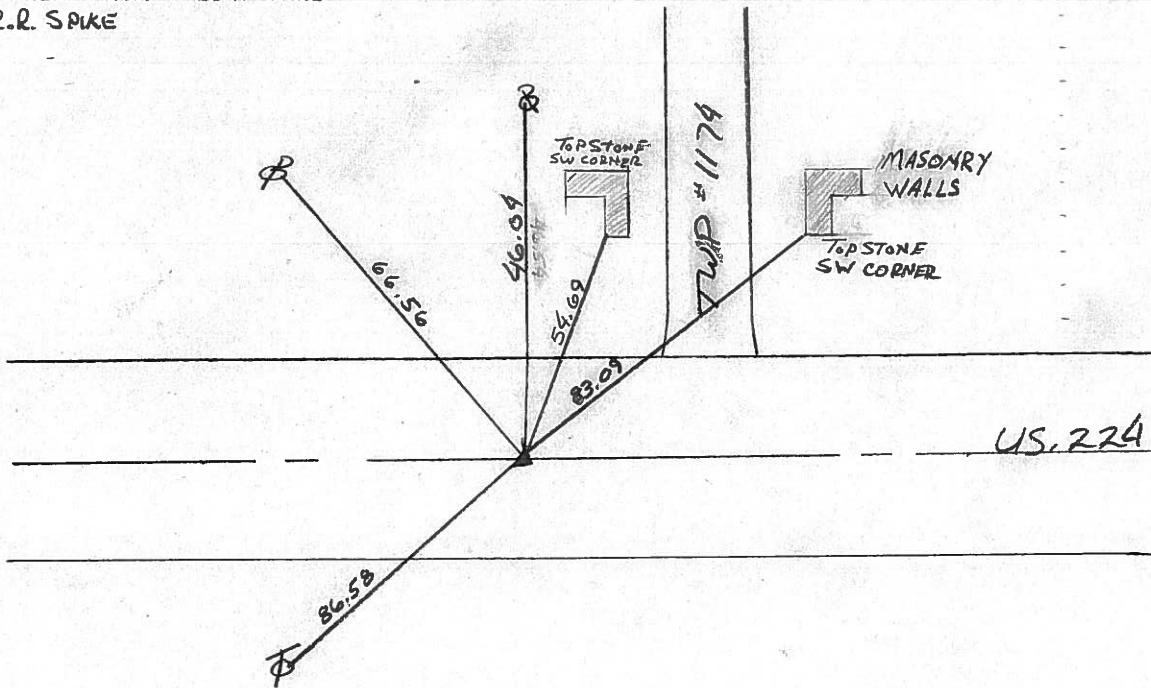
SET P.K./WASHER

9-28-94 mrc

From Field Book #54 - P.I.

P.K. & WASHER ATOP BOAT SPIKE

ATOP R.R. SPIKE



O.D.O.T. DISTRICT 2 SURVEY OFFICE

PERSONNEL

REFERENCE NO. 51

SHEET OF

NOTES CRONIN

DRAWN 6-15-89

H.C. RIPPLE

DATE 6-13-89

R.C. GEYMAN

WEATHER OVERCAST

BARBOUR

TEMP. 72°

ROUTE U.S. 224

COUNTY SENECA

TOWNSHIP EDEN

SECTION 4

T. 1 N. 15 E.

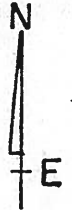
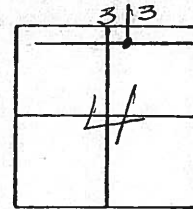
TYPE MONUMENT PK+WASHER P.I.

ON SURFACE - BELOW SURFACE

LEFT- & PAV'T. - RIGHT

 TO EDGE PAVEMENT

S.L.M. 812+71.84

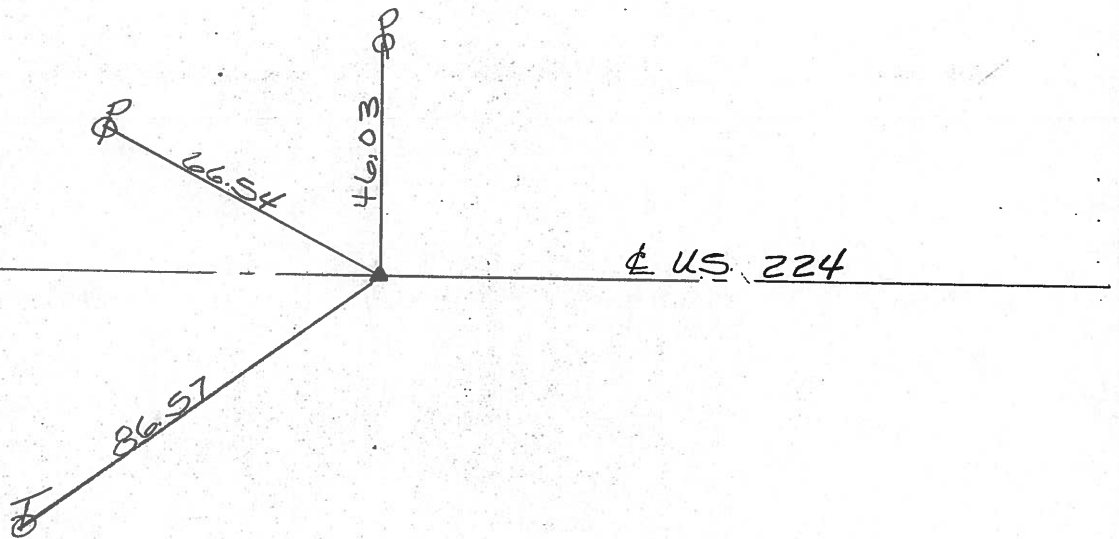


6-23-82

SET P.K.+ WASHER ATOP

BOAT SPIKE ATOP RR SPIKE

HUB FIELD BOOK # 54 (FROM LOFT)



County Seneca S.R. # 224

Date 6/23/82

Township Eden

Weather sunny

Section 4

Temp. 65°

T/N, R/E

Personnel Cronin

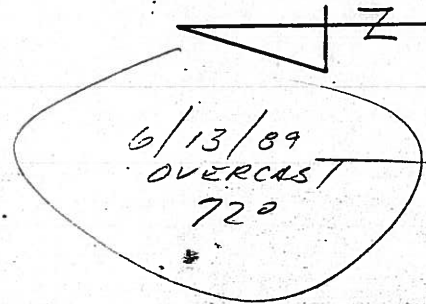
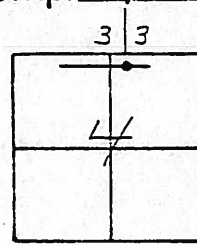
Ripple

Geyman

Mosser

Barbour

#51



P.I

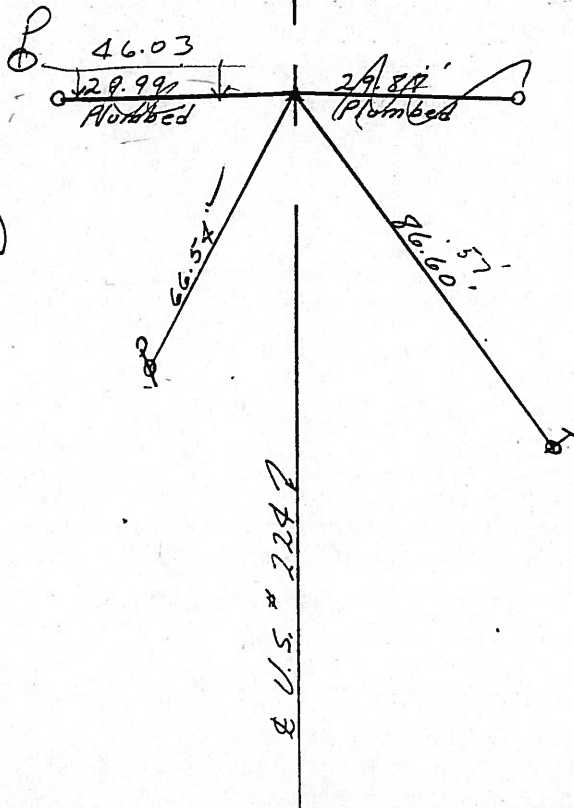
861+85.27

Set P.K & Washer atop

boat spike atop R.R. spike

HUB FIELD BOOK #54 (FROM LOFT)

$$\begin{array}{r} 862 + 4737 \\ 55.27 \\ \hline 82.10 \end{array}$$



EAST OF SR. 100

County Seneca S.R. # 224

Date 6/23/82

Township Eden

Weather sunny

Section 4

Temp. 65°

T/N, R/E

Personnel Cronin

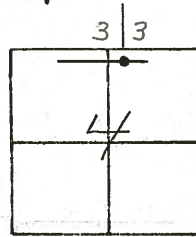
Ripple

Geyman

Mosser

Barbour

#51



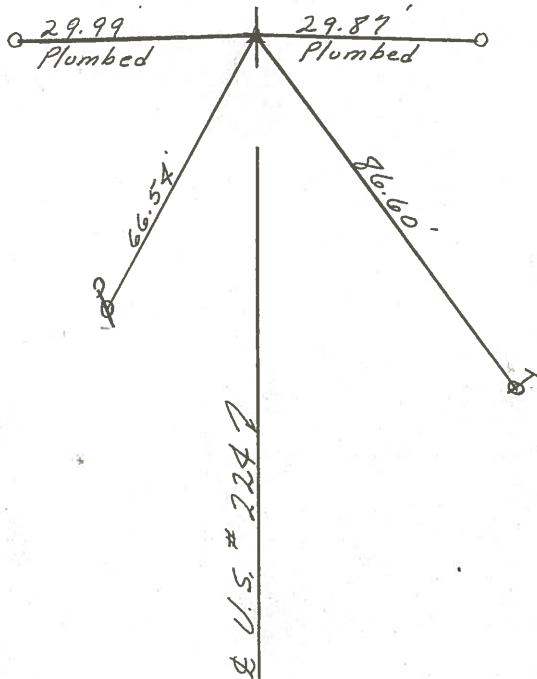
P.I

861 + 85.27

Set P.K. & Washer atop

boat spike atop R.R. spike

HUB FIELD BOOK #54 (FROM LOFT)



PERSONNEL TITLE PERSONNEL TITLE
 Schneider _____ Potts _____
 Mosser _____
 Barbour _____
 Raddino _____

COUNTY Seneca DATE 7-29-68
3-19-68

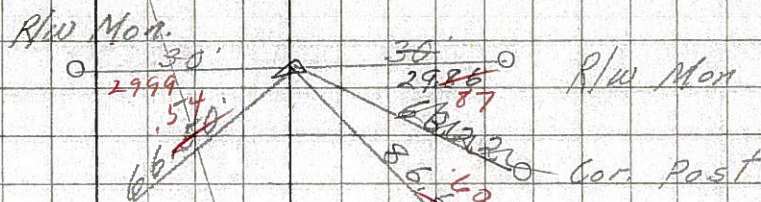
S. R. U.S. 224 WEATHER Fair

SEC. S.R. # 100 East TEMP. 50°

DESCRIPTION Ties for Control Points JOB NO. _____

(51)

P.I. # 3
 R.R. spt.
 861 + 85.27

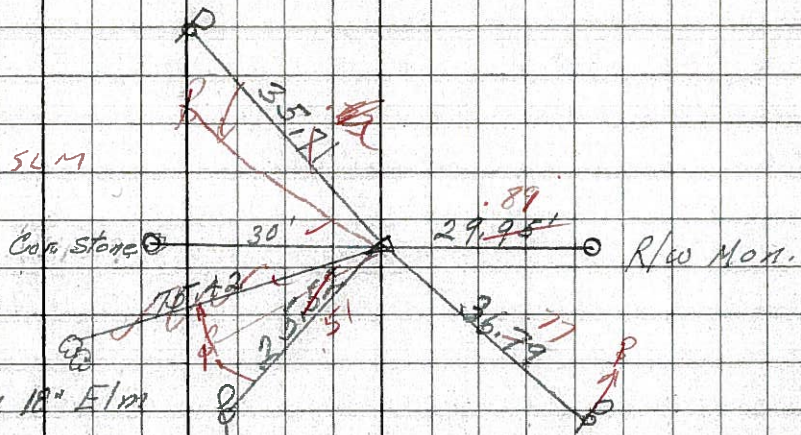


5/3/82 sunny 58°

861 + 85.27
 4760
 - 4760
 865 + 45

(50)

P.I. # 2
 835 + 41.98
 P.K. Nail
 cor stone Sec 32 & 33
 Sec - 5 & 4 30' North
 of P.I.
 twin 18" Elm



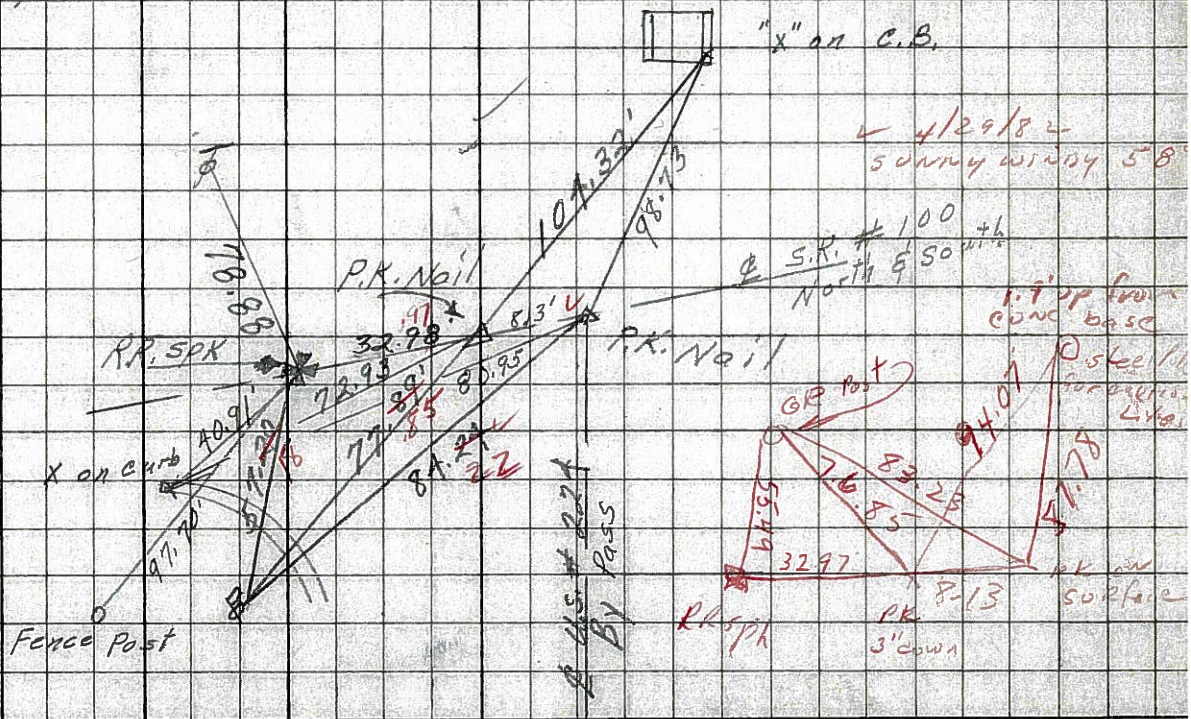
8591
 Reset small spk.

(49-A)

(49)

(48)

P.I. # 1
 828 + 43.20



4/29/82 sunny windy 58°

8590

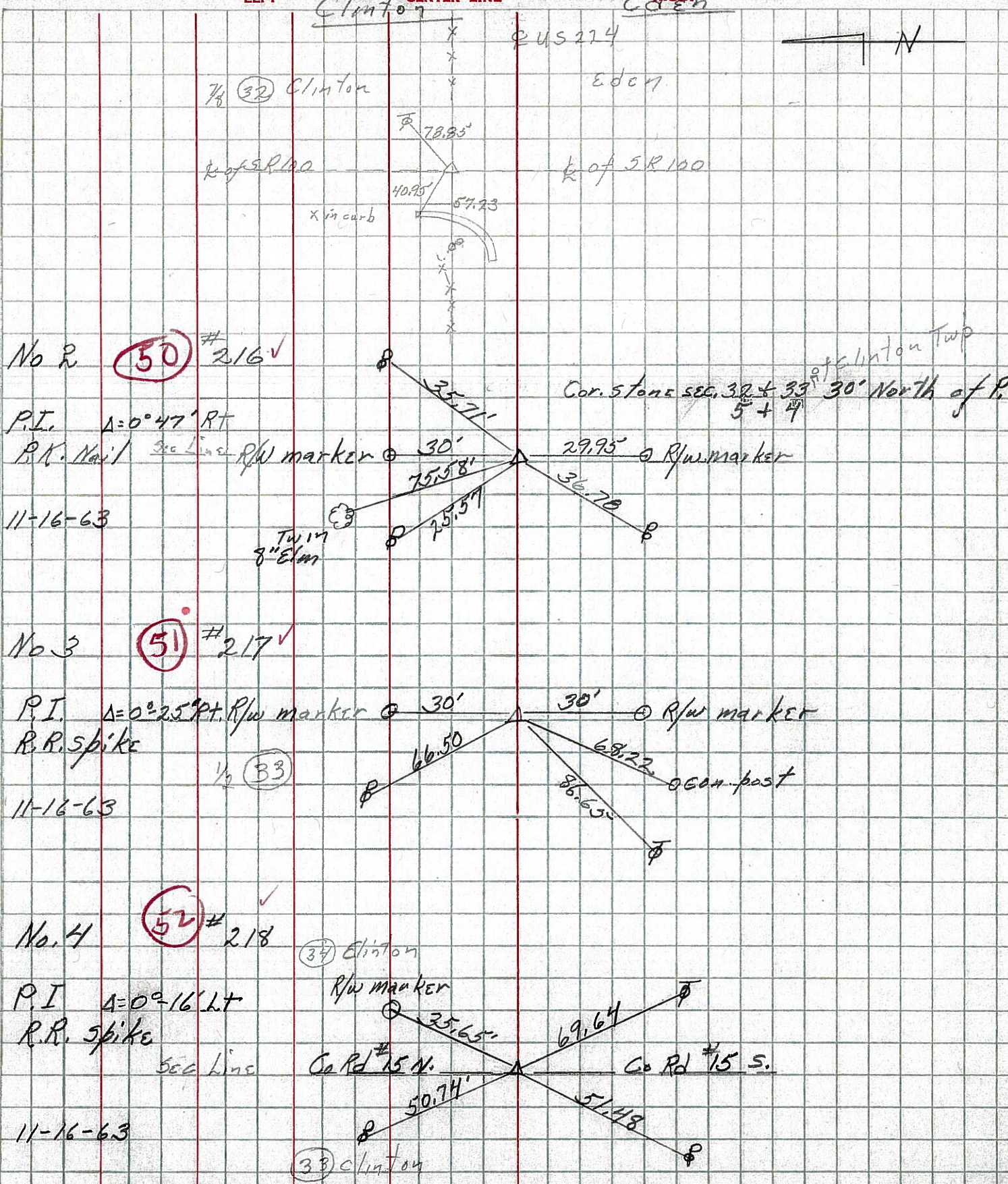
1.7' up from conc base

0 steel pin for surface like

P.K. on surface

PERSONNEL	TITLE	PERSONNEL	TITLE	COUNTY	DATE
KraBill				Seaco	
Kowaleski				S. R. 224	WEATHER
Brooks				SEC	TEMP

DESCRIPTION U.S.R. 224 EAST of S.R. 100 To Africa JOB NO.



PERSONNEL TITLE PERSONNEL TITLE

COUNTY Seneca

DATE 11-24-53

S. R. 224

WEATHER

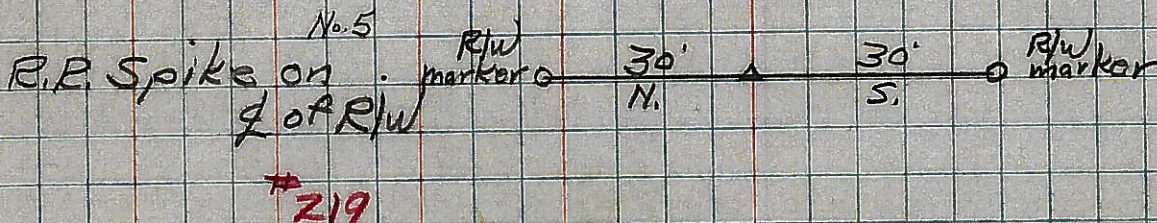
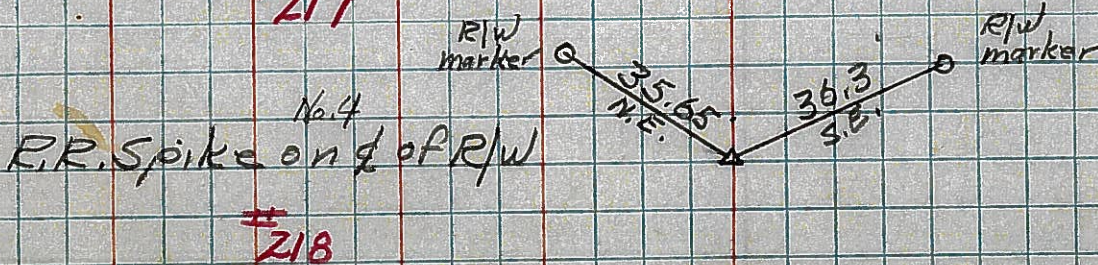
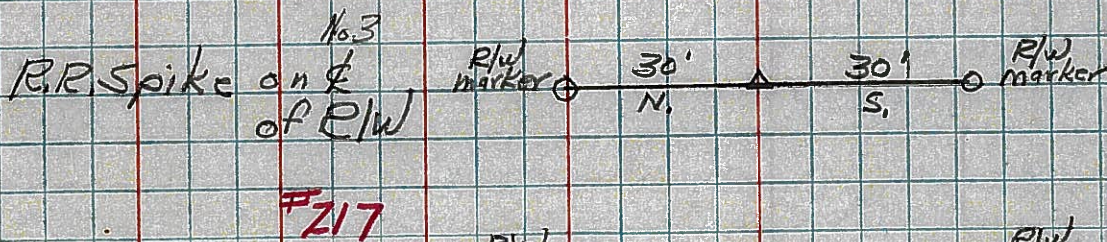
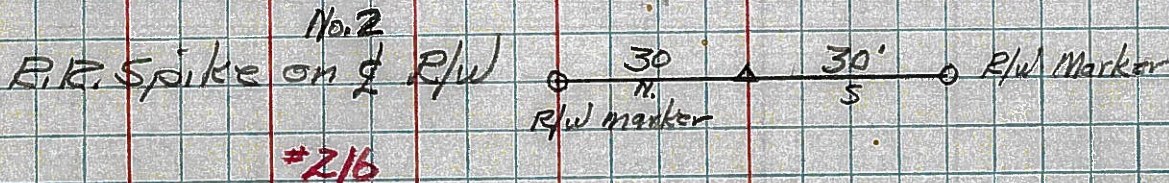
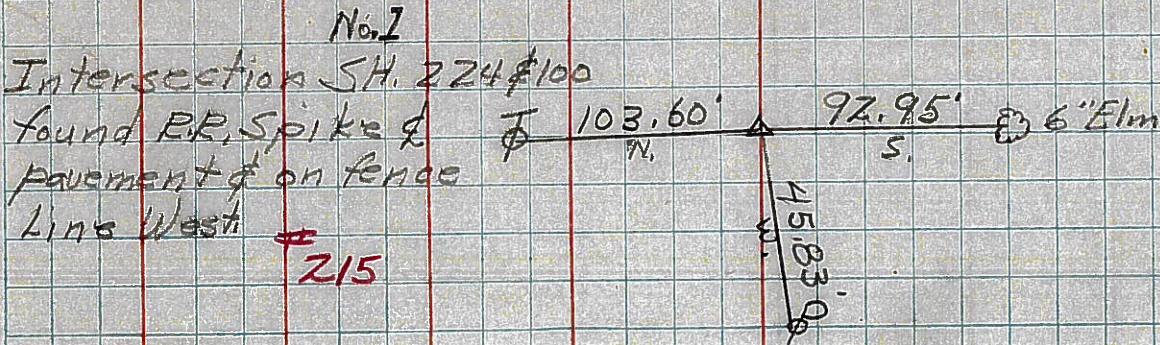
SEC. A

TEMP

DESCRIPTION S. H. 272 From intersection of to S.R. #19

JOB NO. N

S.H. 272 Sec. A. Starting East of the intersection of S.H. 199 on E of S.H. 272 Sec. A. No stationing on this section. Plat showing control points by No. following.



50

51

52

53

PERSONNEL TITLE PERSONNEL TITLE

COUNTY Seneca DATE 11-24-53

S. R. 224 WEATHER

SEC. A TEMP.

DESCRIPTION S.H. 272 From the intersection of S.E. 100 to S.E. 119 JOB NO.

LEFT CENTER LINE RIGHT

S.H. 272 Sec. A. Starting East of the intersection of S.H. 199 on E of S.H. 272 Sec. A. No stationing on this section. Plat showing control points by No. following.

No. 1
 Intersection of S.R. 224 & 100 Found E.E. Spike on E pavement & on fence line West. #215
 103.60' N.
 92.95' S. 6" Elm
 45.83'
 R.R. Spk. & Part of fence line
 45.83' W. Shi. P. Pole
 103.60' N. Shi. T. Pole
 92.95' S. 6" Elm
 Did not find

50 No. 2
 E.E. Spike on E of R/W #216
 30' N. Elw marker
 30' S. Elw marker
 Did not find

51 No. 3
 E.E. Spike on E of Elw #217
 30' N. Elw marker
 30' S. Elw marker
 Did not find

52 No. 4
 E.E. Spike on E of Elw #218
 35.65' N. Elw marker
 30.3' S. Elw marker
 5.5'

53 No. 5
 E.E. Spike on E of Elw #219
 30' N. Elw marker
 30' S. Elw marker