

O.D.O.T. DISTRICT 2 SURVEY OFFICE (USE ONLY)

PERSONNEL	REFERENCE NO.	51 A	SHEET	6	OF	19
NOTES	HOMAN	DATE	9/9/14	ROUTE	SR 224	
H.C.	LEU	WEATHER	SUNNY	COUNTY	SENECA	
R.C.	WESTFALL	TEMP.	70°	TOWNSHIP	EDEN	
				SECTION	4	
				T	1	N
				R	15	E

TYPE MONUMENT 5/8" IPIN

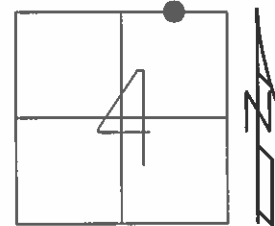
ON SURFACE - ~~BELOW~~ ON

~~LEFT~~ - CL PAV'T - RIGHT 18.6'

6.4' RT TO RT EDGE PAVEMENT

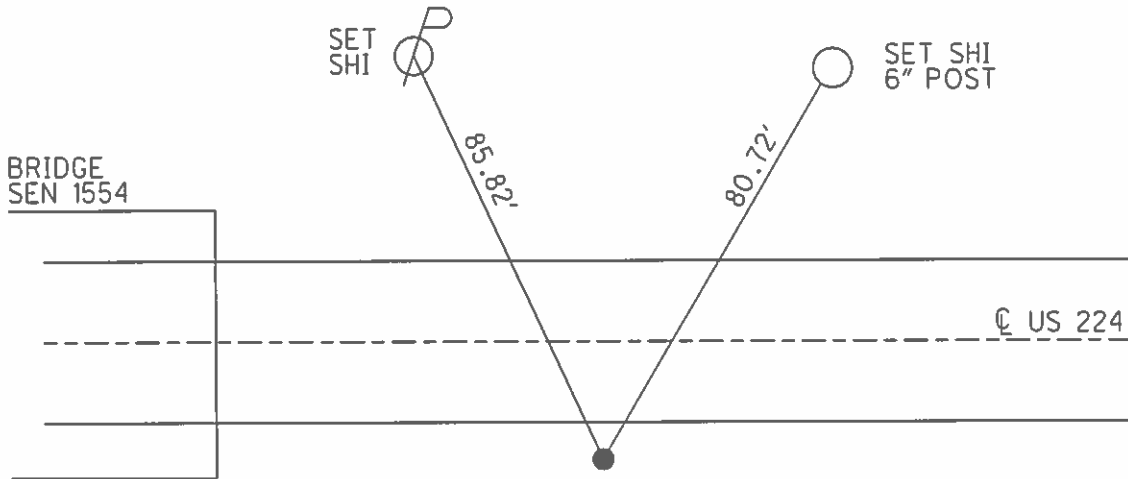
S.L.M. 822+70.95

Grid: Northing: 515779.605 Easting: 1792860.395



RECORD: P.I.
SET 5/8" IPIN
8/16/99, MB

FD 5/8" IPIN
1/15/13, SDC
GPS, REFA51
1/16/13, DCH



O.D.O.T. DISTRICT 2 SURVEY OFFICE

PERSONNEL

REFERENCE NO. 51-A

SHEET OF

NOTES BARNHISEL

H.C. CANTERBURY

R.C. ROUSOS

DATE 8-16-99

WEATHER SUNNY

TEMP. +85°

ROUTE 224

COUNTY SENECA

TOWNSHIP EDEW

SECTION 4

T1 N R 15 E

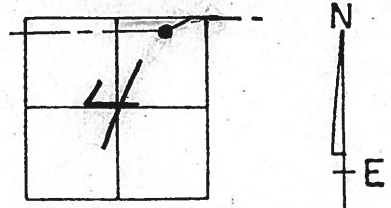
TYPE MONUMENT SET 5/8" I-ROD (4-7-00)

ON SURFACE - ~~BELOW~~ yes

~~LEFT~~ - & PAV'T. - RIGHT 18.6'

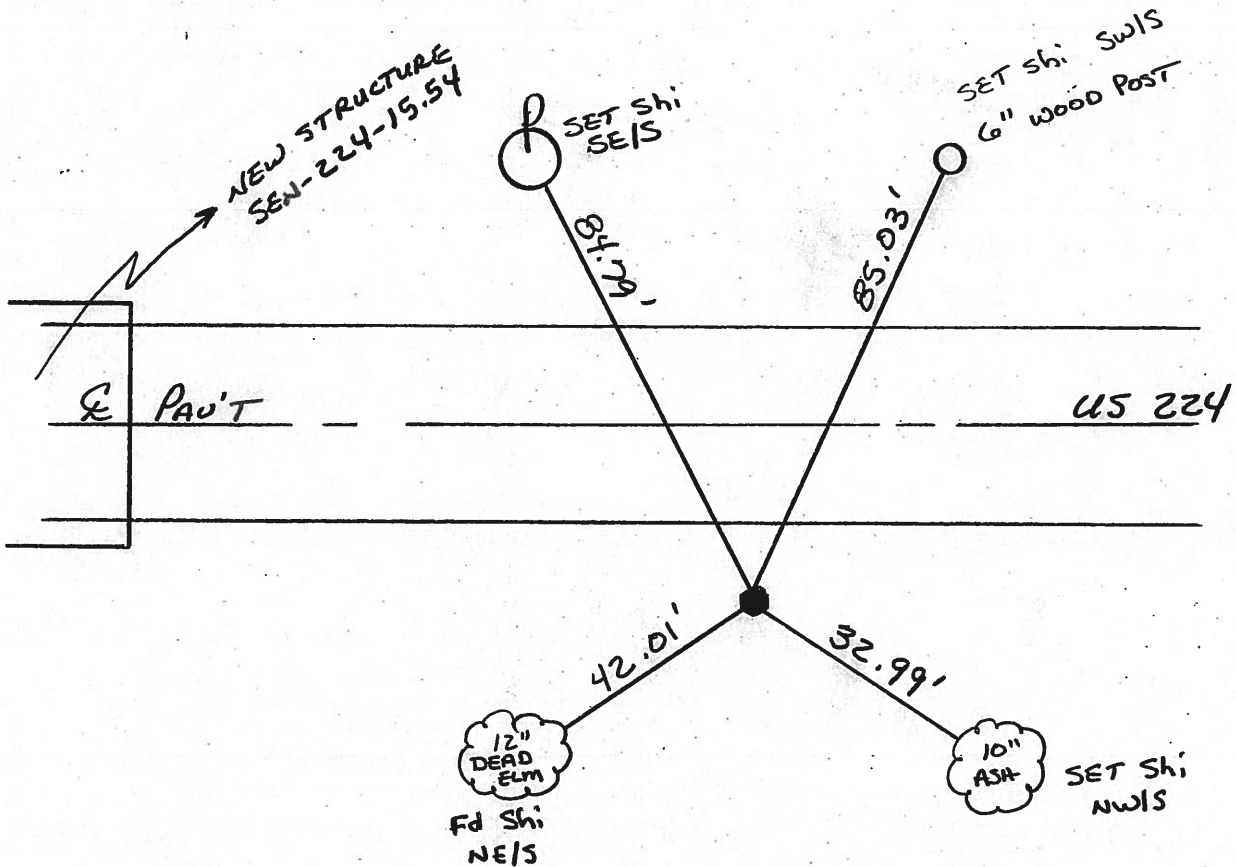
6.4' RT OF RT EDGE PAVEMENT

S.L.M. 873+47.74



NOTE: PI, NEW BRIDGE, MOVED ROADWAY,
SAME RECORD PI, OFF PAV'T WITH

Record: NEW ROADWAY ALIGNMENT
Field Book #54



O.D.O.T. DISTRICT 2 SURVEY OFFICE

PERSONNEL

REFERENCE NO. 51A

SHEET 3 OF 16

NOTES CHANEY

H.C. RIFFLE

R.C. BARBOUR

DATE 5-2-94

WEATHER FAIR

TEMP. +52

ROUTE US 224

COUNTY SENECA

TOWNSHIP EDEN

SECTION 4

T I N R I S E

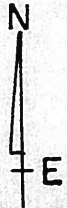
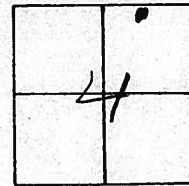
TYPE MONUMENT PK/WASHER

ON SURFACE - BELOW YES

LEFT - C PAV'T. - RIGHT 4.7 RT C

4.2 TO RT EDGE PAVEMENT

S.L.M. 822+78

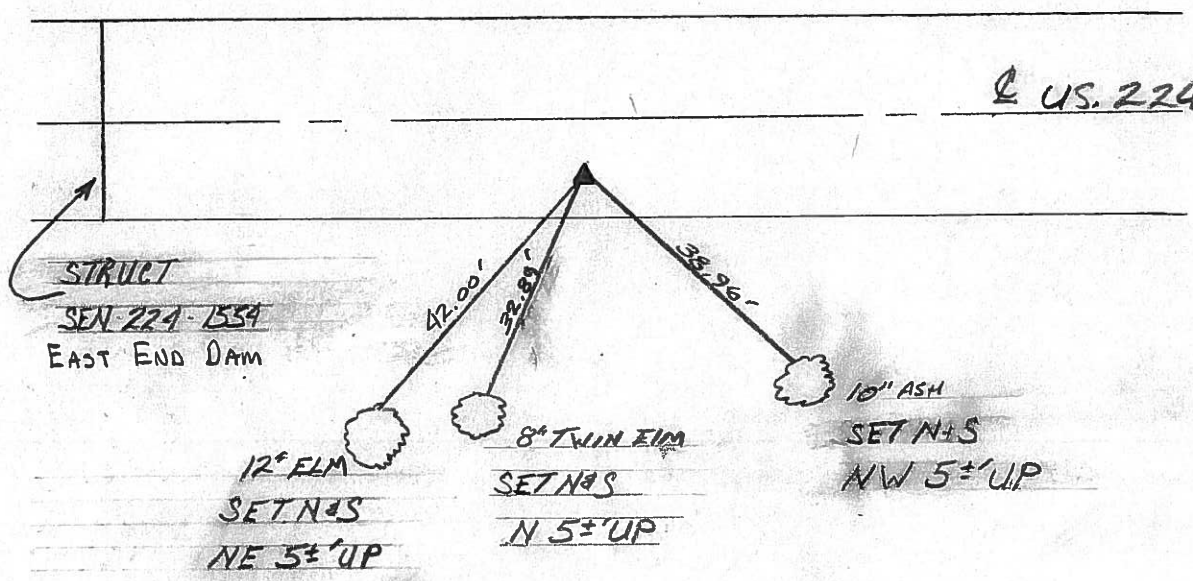


SET PK/WASHER

9-28-94 MRC

Record P.I. Sta 872+

Field Book #54



County Seneca S.R. # 224

Date 6/23/82

Township Eden

Weather sunny

Section 4

Temp. 65°

T/N, R/E

Personnel Cronin

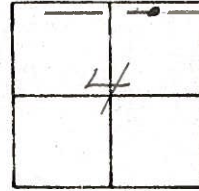
Ripple

Geyman

Mosser

Barbour

#51-A



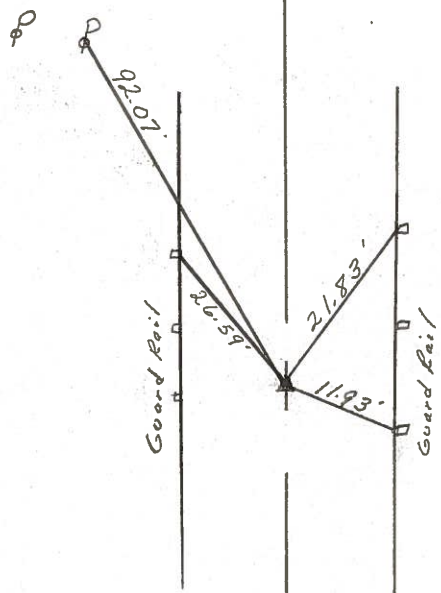
P.I

872+

set P.K. & washer atop

P.K. & washer - 4.5' RT. & R.V.T.

HVB - FIELD BOOK #54 (FROM LUFT)



& U.S. # 224

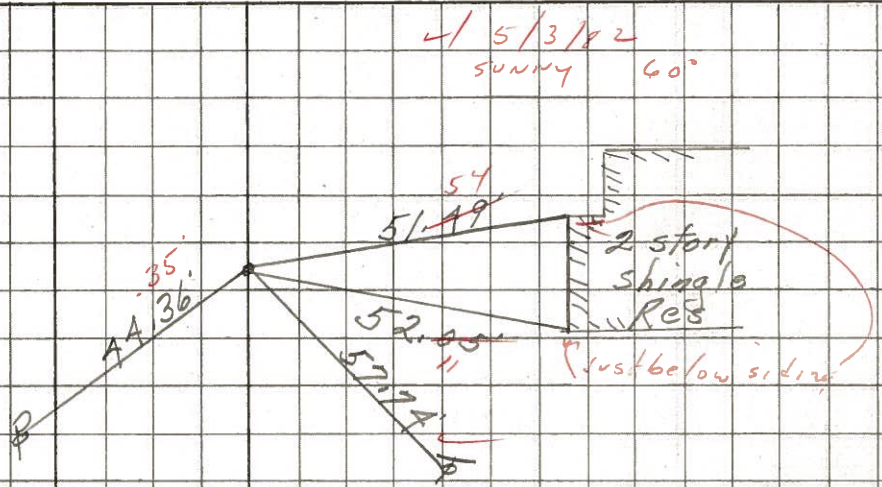
PERSONNEL TITLE PERSONNEL TITLE
 Schneider _____
 Mosser _____
 Barbour _____
 Redding _____

COUNTY Seneca DATE 7-29-68
 S. R. U.S. # 224 WEATHER Fair
 SEC. S.R. #100 to Attica TEMP. 60°

DESCRIPTION Ties for Control Points LEFT CENTER LINE RIGHT JOB NO.

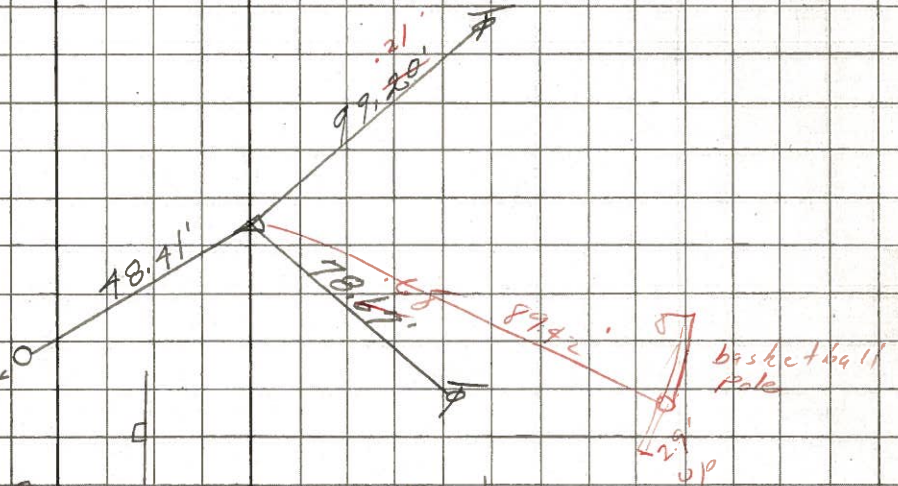
51-C

P.O.T.
 878+
 P.K. Nail
 Reset P.K. Nail
 Washer
 8596



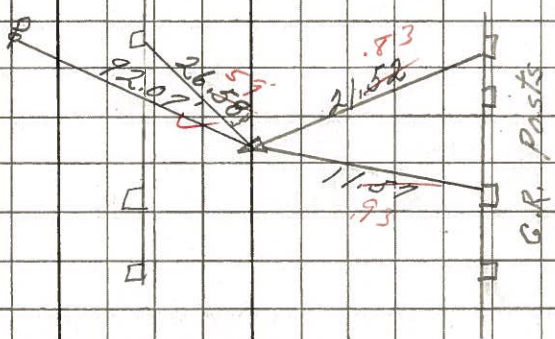
51-B

10' LK. & PVT
 P.I.
 874+87.9
 P.K. Nail
 Reset P.K. Nail
 Washer Rd. sign Post
 8595



51-A

45' TEL & PVT
 P.I.
 872+
 P.K. Nail
 Reset P.K. Nail
 Washer
 8594



Cor. stone 30'

8593