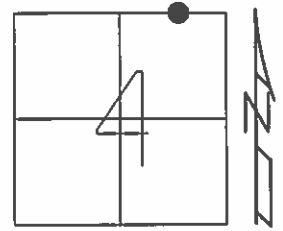


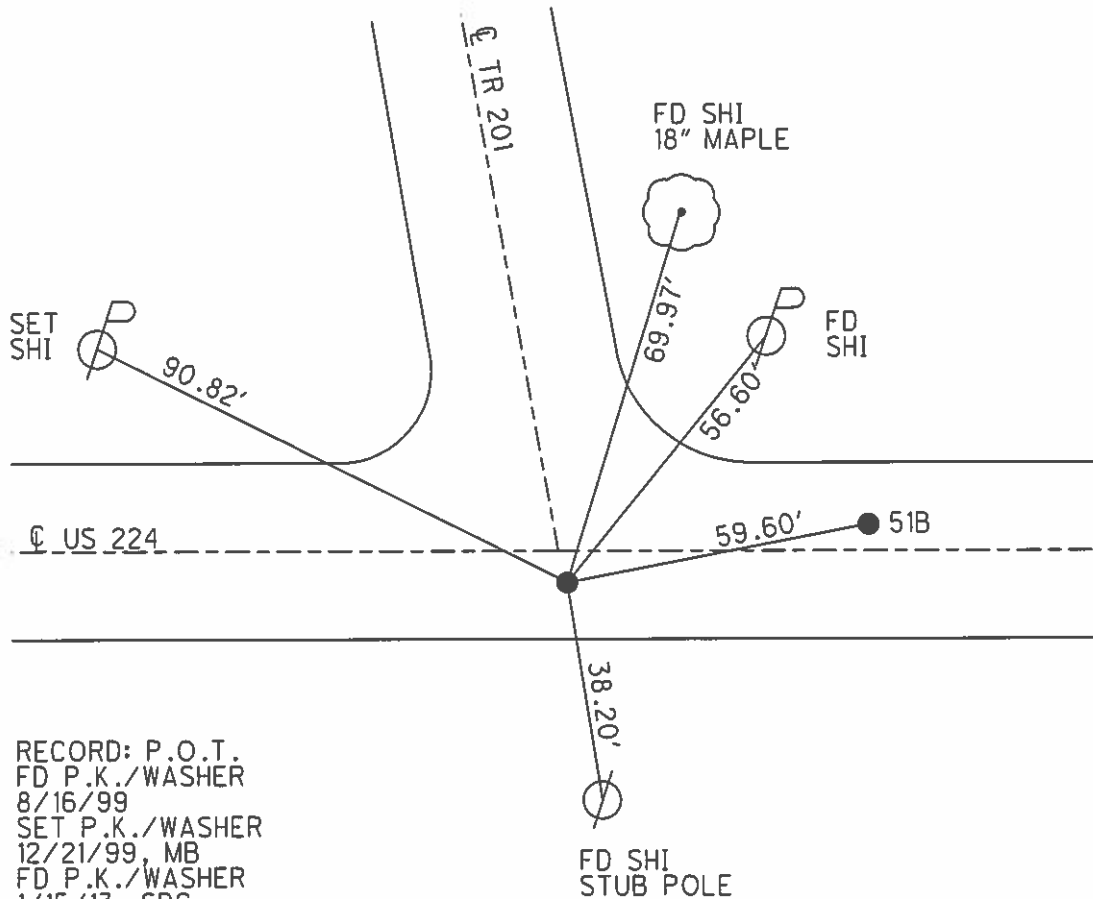
O.D.O.T. DISTRICT 2 SURVEY OFFICE (USE ONLY)

PERSONNEL _____ REFERENCE NO. 51 AA SHEET 7 OF 19
 NOTES HOMAN DATE 9/9/14 ROUTE SR 224
 H.C. LEU WEATHER SUNNY COUNTY SENECA
 R.C. WESTFALL TEMP. 75° TOWNSHIP EDEN
 _____ SECTION 4
 _____ T 1 N R 15 E

TYPE MONUMENT P.K./WASHER
 ON SURFACE - ~~BELOW~~ ON _____
~~LEFT~~ - ☉ PAV'T - RIGHT 4.0'
 - TO - EDGE PAVEMENT
 S.L.M. 824+12.80



Grid: Northing: 515797.893 Easting: 1793001.107



RECORD: P.O.T.
 FD P.K./WASHER
 8/16/99
 SET P.K./WASHER
 12/21/99, MB
 FD P.K./WASHER
 1/15/13, SDC
 GPS, REFAA51
 1/16/13, DCH
 SET MAG/WASHER
 GPS, NEWREFAA51
 7/13/15, JFO

O.D.O.T. DISTRICT 2 SURVEY OFFICE

PERSONNEL _____

REFERENCE NO. 51-B

SHEET _____ OF _____

NOTES BARNHISEL

H.C. CANTERBURY

R.C. ROUSOS

DATE 8-16-99

WEATHER SUNNY

TEMP. +85°

ROUTE 224

COUNTY SENECA

TOWNSHIP EDEN

SECTION 4

T L N R 15 E

TYPE MONUMENT BOTH PK/WASHER

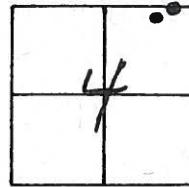
ON SURFACE - ~~BELOW~~ yes yes

LEFT - PAV'T. - RIGHT RT 4.0' LT 3.9'

- TO - EDGE PAVEMENT & SURVEY

S.L.M. (A) POT = 874+90.00 (B) PI = 875+49.47

51-AA



Reset PK/washer
@ Both Locations
12-21-99
MDB

