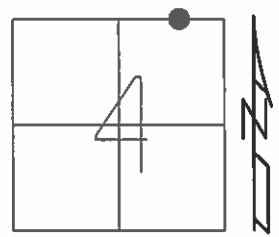


O.D.O.T. DISTRICT 2 SURVEY OFFICE (USE ONLY)

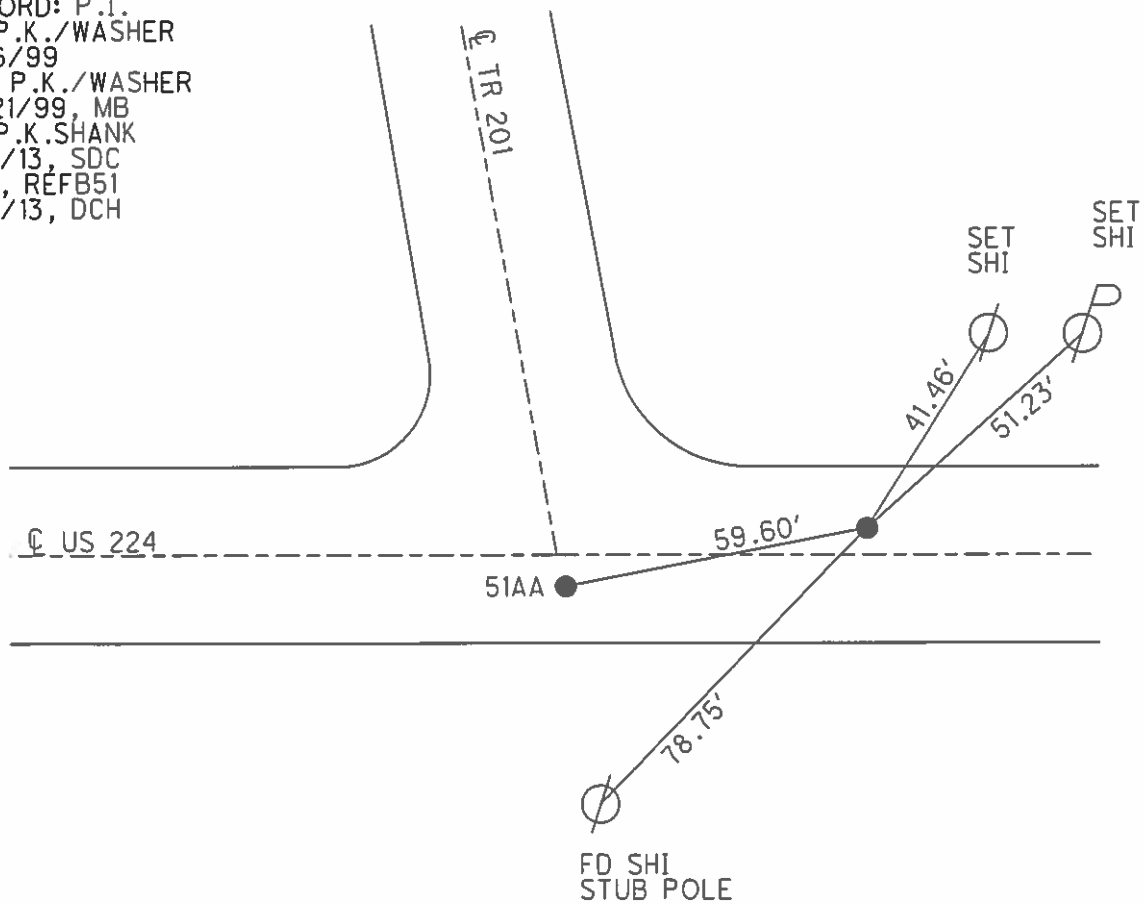
PERSONNEL	REFERENCE NO.	51 B	SHEET	8	OF	19
NOTES	BARNHESEL	DATE	8/16/99	ROUTE	SR 224	
H.C.	CANTERBURY	WEATHER	SUNNY	COUNTY	SENECA	
R.C.	ROUSOS	TEMP.	85°	TOWNSHIP	EDEN	
				SECTION	4	
				T 1 N	R 15 E	

TYPE MONUMENT P.K./WASHER
 ON SURFACE - ~~BELOW~~ ON _____
 LEFT - ℄ PAV'T - ~~RIGHT~~ 3.9'
 - TO - EDGE PAVEMENT
 S.L.M. 824+72.34



Grid: Northing: 515805.809 Easting: 1793060.035

RECORD: P.I.
 FD P.K./WASHER
 8/16/99
 SET P.K./WASHER
 12/21/99, MB
 FD P.K. SHANK
 1/15/13, SDC
 GPS, REFB51
 1/16/13, DCH



O.D.O.T. DISTRICT 2 SURVEY OFFICE

PERSONNEL _____

REFERENCE NO. (A) (B) 51-B

SHEET _____ OF _____

NOTES BARNHISEL

H.C. CANTERBURY

R.C. ROUSOS

DATE 8-16-99

WEATHER SUNNY

TEMP. +85°

ROUTE 224

COUNTY SENECA

TOWNSHIP EDEN

SECTION 4

T. 1 N. 15 E.

TYPE MONUMENT BOTH PK/WASHER

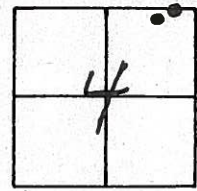
ON SURFACE - ~~BELOW~~ yes yes

LEFT - ☉ PAV'T. - RIGHT RT 4.0' LT 3.9'

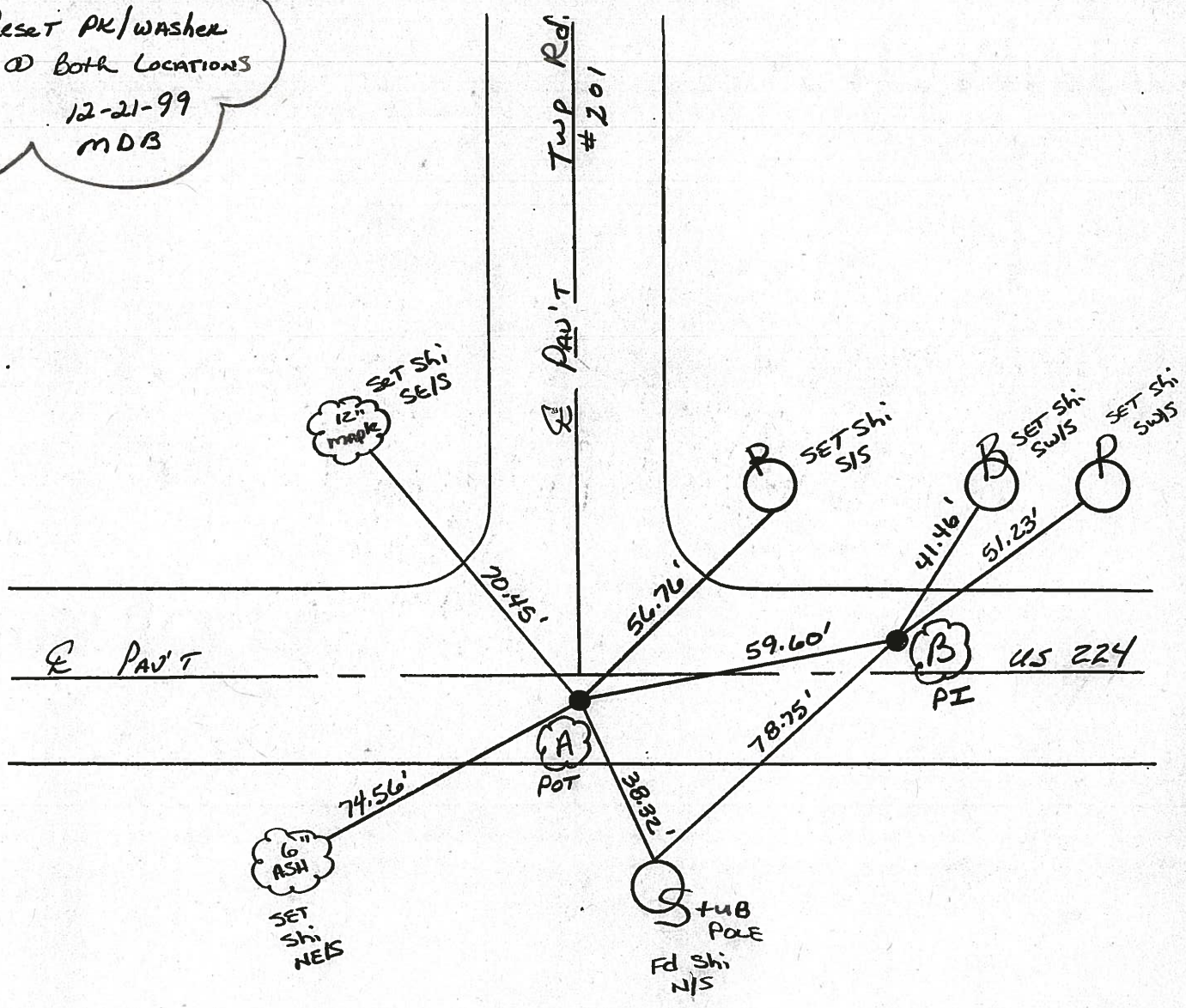
- TO - EDGE PAVEMENT ☉ SURVEY

S.L.M. (A) POT = 874+90.00 (B) PI = 875+49.47

51-B



Reset PK/washer
@ Both Locations
12-21-99
MDB



O.D.O.T. DISTRICT 2 SURVEY OFFICE

PERSONNEL _____

REFERENCE NO. 51-B

SHEET 4 OF 16

NOTES CHANEY

H.C. RIPPLE

R.C. BARBOUR

DATE 5-2-99

WEATHER FAIR

TEMP. 53

ROUTE US 224

COUNTY SENECA

TOWNSHIP EDEN

SECTION 4

T L N R 1 5 E

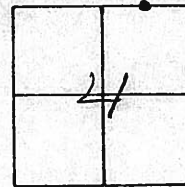
TYPE MONUMENT PK/WASHER

ON SURFACE - BELOW Yes

LEFT - & PAV'T. - RIGHT 9' LT & PAVMT

0.6 TO LT EDGE PAVEMENT

S.L.M. 824-79



SET PK/WASHER

9-28-94 MCTE

RECORDED P.I.

Sta 874+ 87.89

ORIGINALLY IRON PIN

FIELD BOOK #54 (From Left)

SET N&S, SE

3

phi shi

36.63'

& PAVT

U.S. 224

78.76'

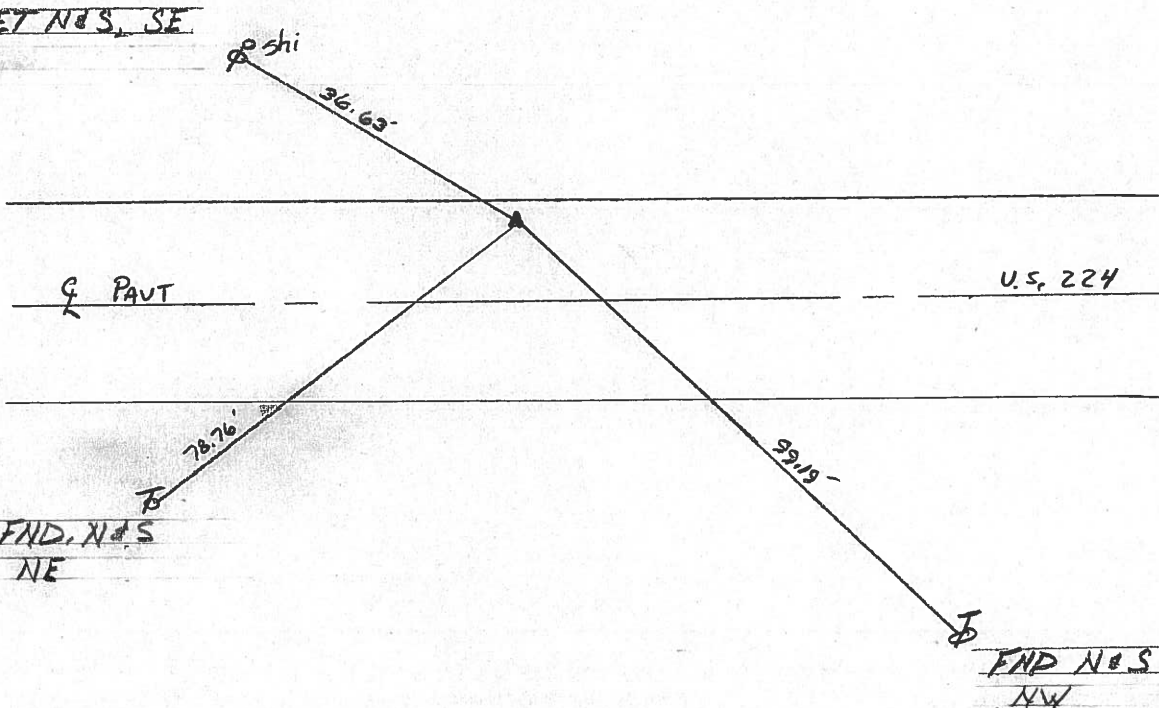
59.15'

END. N&S

NE

END N&S

NW



County Seneca S.R. #224

Date 6/23/82

Township Eden

Weather sunny

Section 4

Temp. 68°

T/LN, RISE

Personnel Cronin

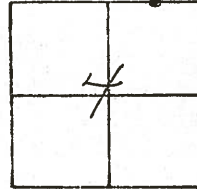
Ripple

Geyman

Mosser

Barbour

#51-B



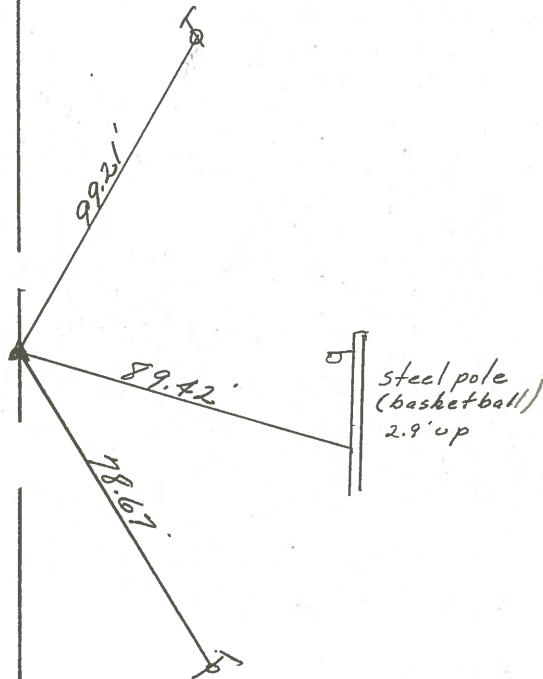
P.I

874+8790

Set P.K. & washer atop P.K. &'

washer -10± Lt. & P.V.T.

IRON PIN - FIELD BOOK #54 (FROM LOFT)



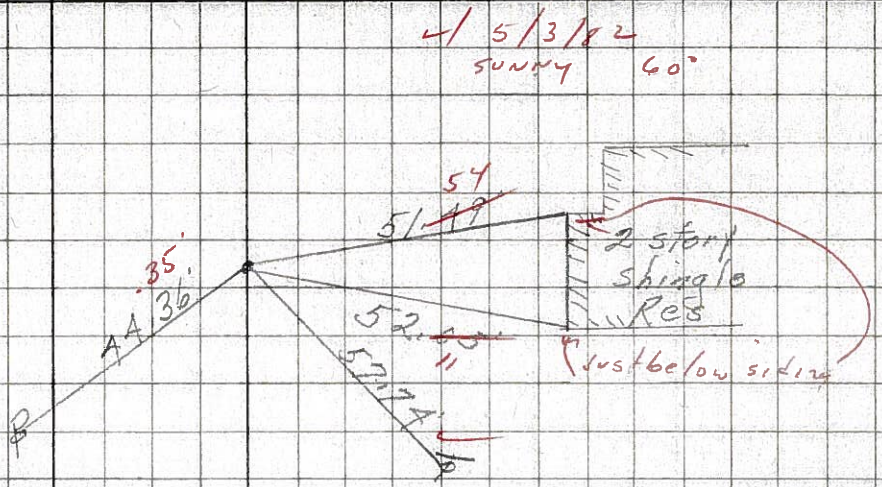
U.S. # 224

PERSONNEL	TITLE	PERSONNEL	TITLE	COUNTY	DATE	WEATHER	TEMP.
Schneider		Potts		Seneca	7-29-68	Fair	60°
Mosser				U.S. # 224	3-19-68		
Barbour				SEC. S.R. #1006 Attica			
Redding							

DESCRIPTION: Ties for Control Points

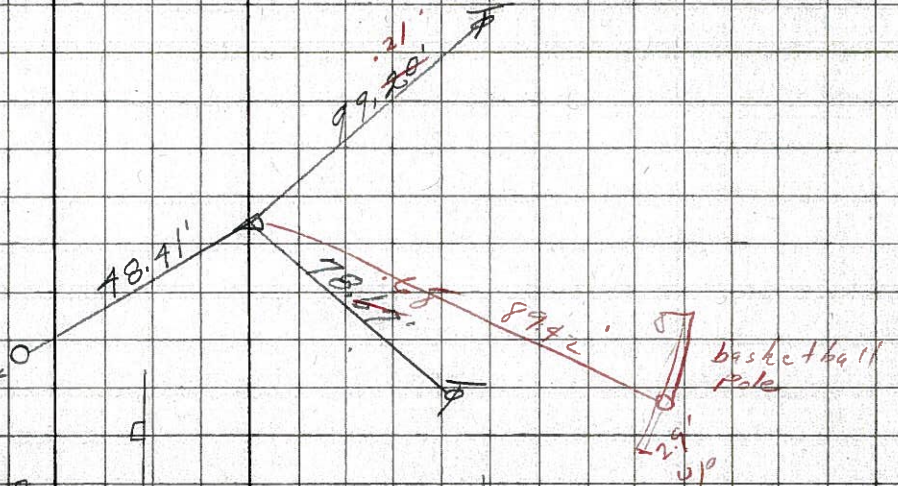
(51-C)

P.O.T.
878+
P.K. Nail
Reset P.K. Nail
E washer
8596



(51-B)

10' ± LL. & PVT
P.I.
874+879
P.K. Nail
Reset P.K. Nail
E washer Rd. sign Post
8595



(51-A)

45' LL & PVT
P.I.
872+
P.K. Nail
Reset P.K. Nail
E washer
8594



Cor. stone 30'

8593