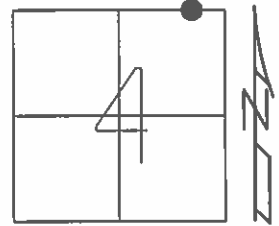


O.D.O.T. DISTRICT 2 SURVEY OFFICE (USE ONLY)

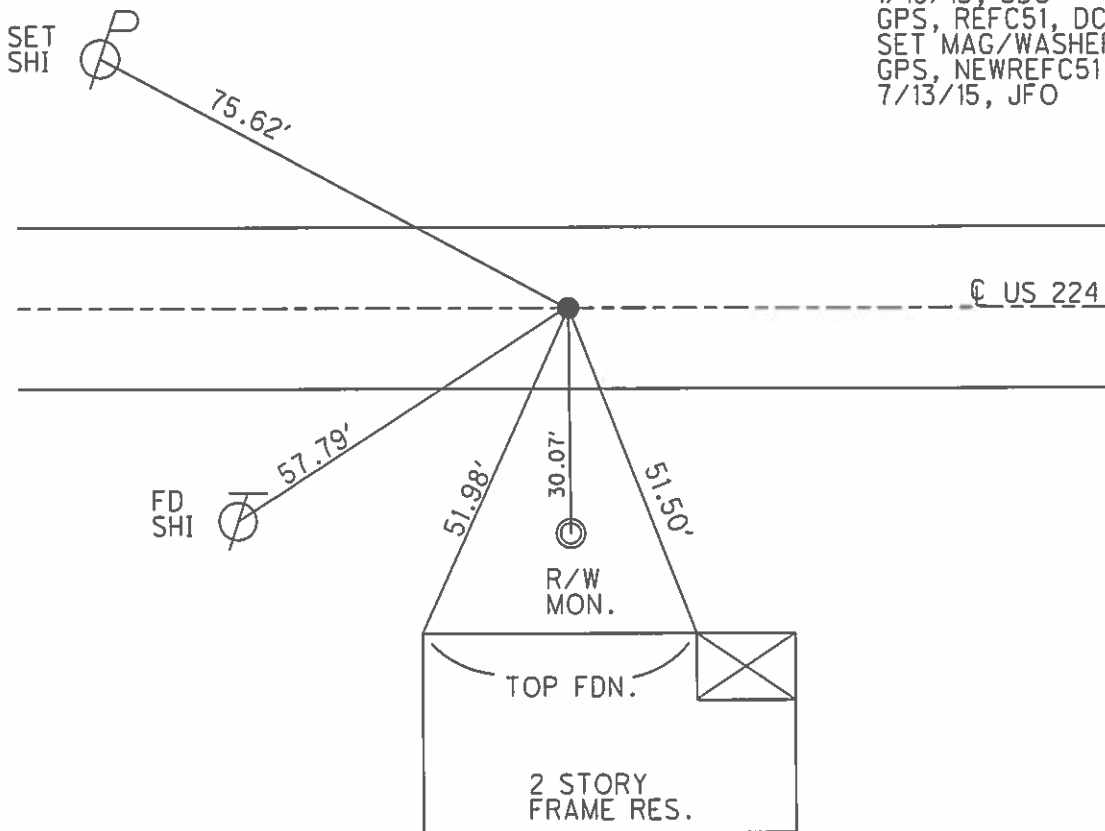
PERSONNEL	REFERENCE NO.	51 C	SHEET	9	OF	19
NOTES	NUHFER	DATE	9/5/14	ROUTE	SR 224	
H.C.	LEU	WEATHER	SUNNY	COUNTY	SENECA	
R.C.	RHOADES	TEMP.	72°	TOWNSHIP	EDEN	
				SECTION	4	
				T	1	N
				R	15	E

TYPE MONUMENT P.K./WASHER
 ON SURFACE - ~~BELOW~~ ON
 LEFT - ☉ PAV'T - RIGHT ON
10.3' TO RT EDGE PAVEMENT
 S.L.M. 828+70.59



Grid: Northing: 515800.353 Easting: 1793458.371

RECORD: P.O.T.
 STA: 878+80
 FD P.K./WASHER
 5/2/94
 SET P.K./WASHER
 ATOP P.K./WASHER
 9/28/94, MRC
 FD P.K./WASHER
 1/15/13, SDC
 GPS, REFC51, DCH
 SET MAG/WASHER
 GPS, NEWREFC51
 7/13/15, JFO



O.D.O.T. DISTRICT 2 SURVEY OFFICE

PERSONNEL

REFERENCE NO. 51-c

SHEET 5 OF 16

NOTES Chaney

H.C. RIPPLE

R.C. BARBOUR

DATE 5-2-94

WEATHER FAIR

TEMP. +56

ROUTE 224

COUNTY SENECA

TOWNSHIP EDEN

SECTION 4

T. 1 N. R. 15 E.

TYPE MONUMENT PK/WASHER

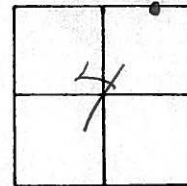
Reset
9-28-94
MRC

ON SURFACE - BELOW ON

LEFT - CL PAV'T. - RIGHT CL PAVMT

9' TO RT EDGE PAVEMENT

S.L.M. 828+80

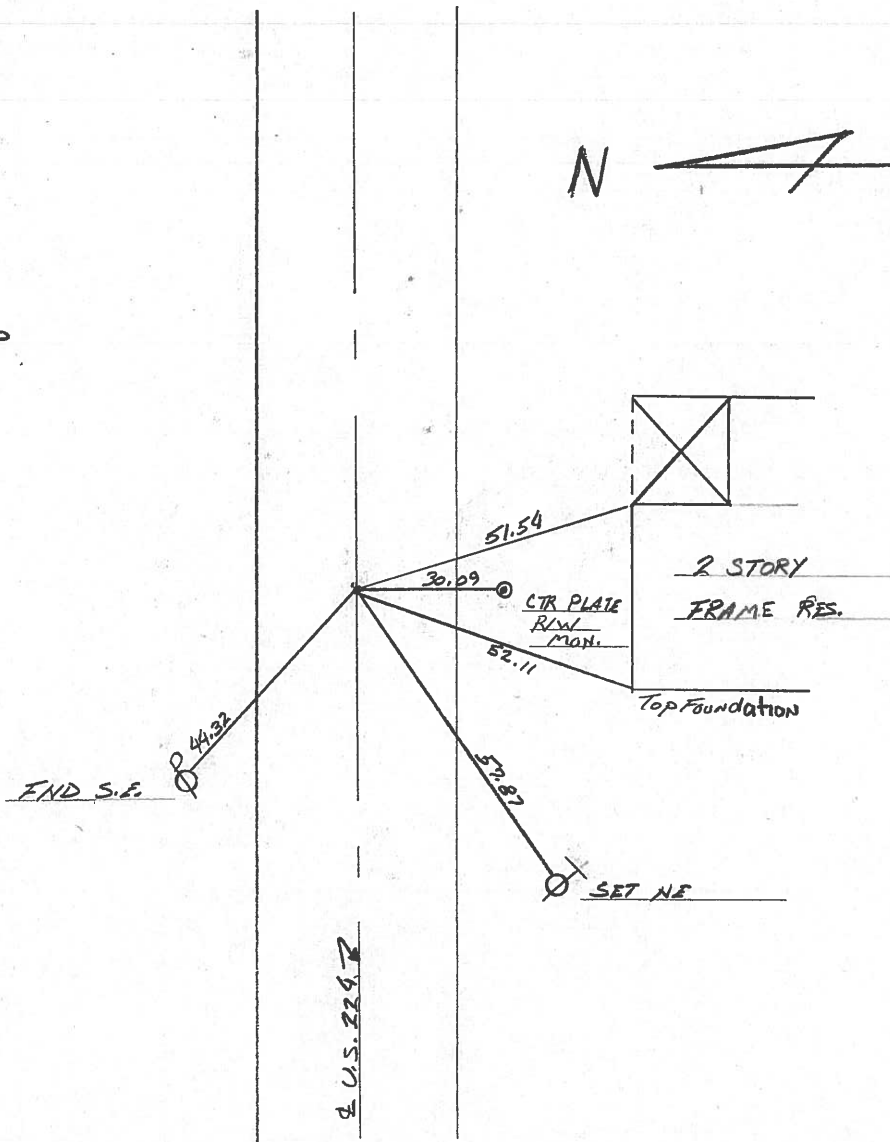


P.O.T.

878+

SET PK/WASHER ATOP

PK/WASHER



SET PK/WASHER

9/28/94

MRC

U.S. 224

County Seneca S.R. # 224

Date 6/23/82

Township Eden

Weather sunny

Section 4

Temp. 68°

T1N, R15E

Personnel Cronin

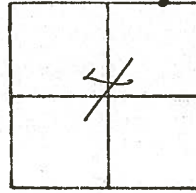
Ripple

Geyman

Mosser

Barbour

#51-C



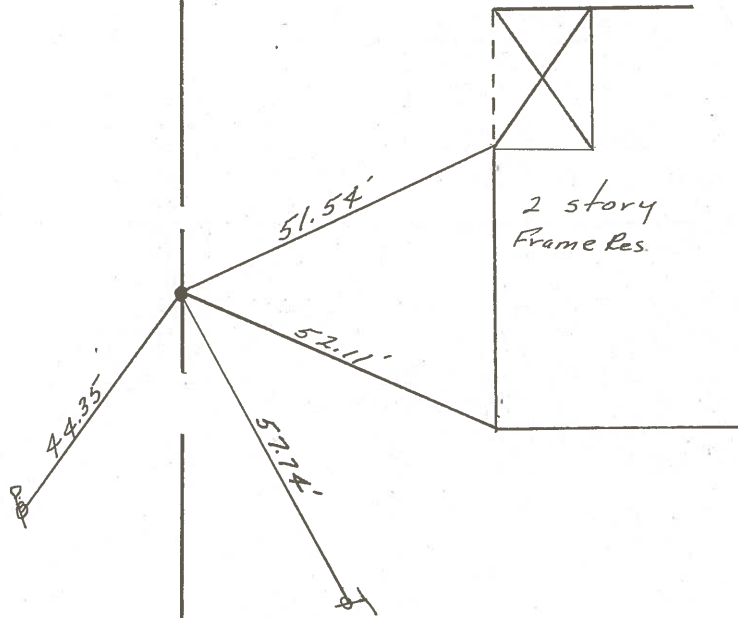
P.O.T. _____

878+

Set P.K. & washer atop

P.K. & Washer

Grove - 11012 Book 109 (Gen. 10)



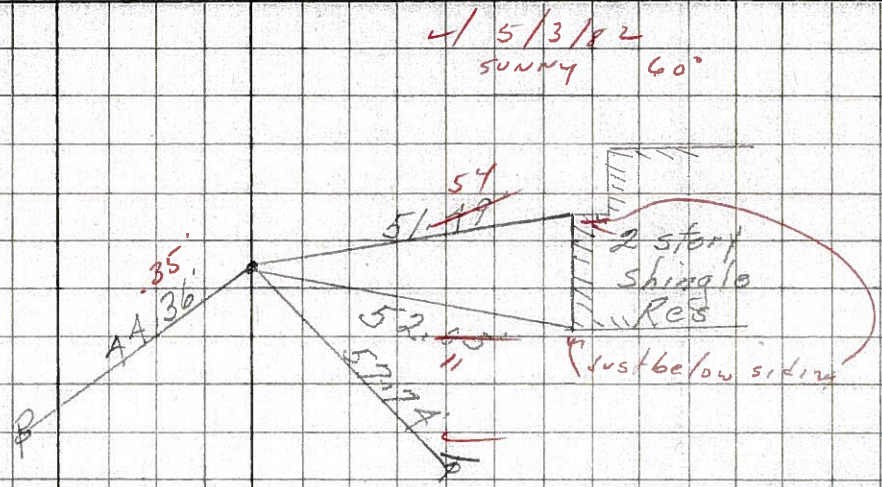
E U.S. # 224

PERSONNEL	TITLE	PERSONNEL	TITLE	COUNTY	DATE	WEATHER	TEMP.
Schneider		Potts		Seneca	7-29-68	Fair	60°
Mosser				S. R. U.S. #224	3-19-68		
Barbour				SEC. S.R. #100 to Attica			
Redding							

DESCRIPTION Ties for Control Points JOB NO.

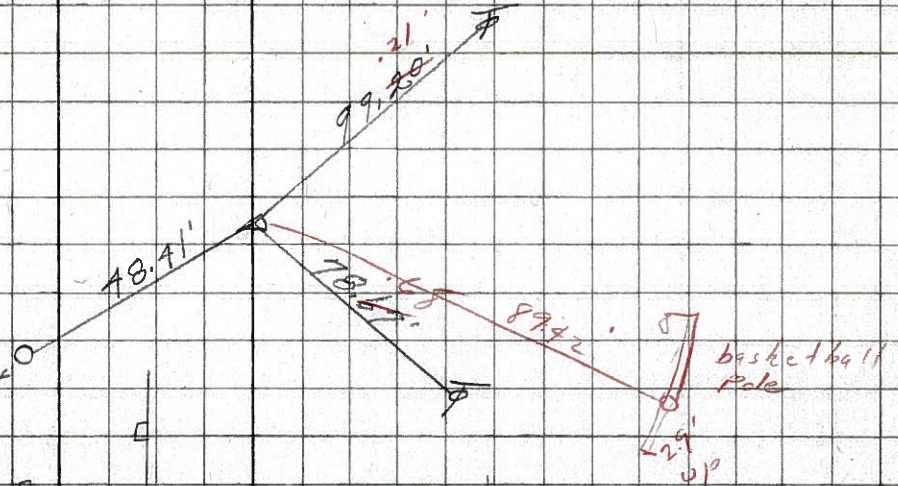
51-C

P.O.T.
878+
P.K. Nail
Reset P.K. Nail
E' washer
8596



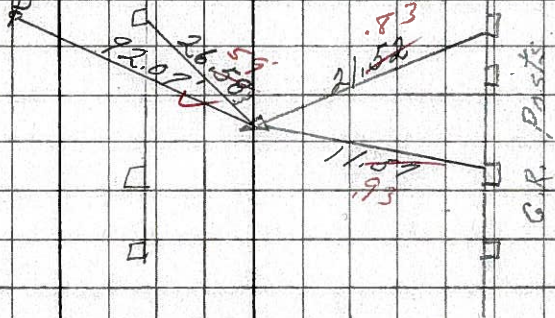
51-B

10' ± LK. & PWT
P.I.
874+879
P.K. Nail
Reset P.K. Nail
E' washer Rd. Sign Post
8595



51-A

45' JOL & PWT
P.I.
872+
P.K. Nail
Reset P.K. Nail
E' washer
8594



Cor. Stone 30'

8593