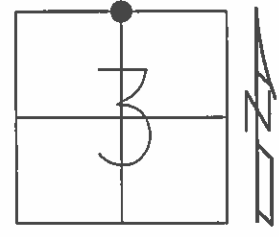


O.D.O.T. DISTRICT 2 SURVEY OFFICE (USE ONLY)

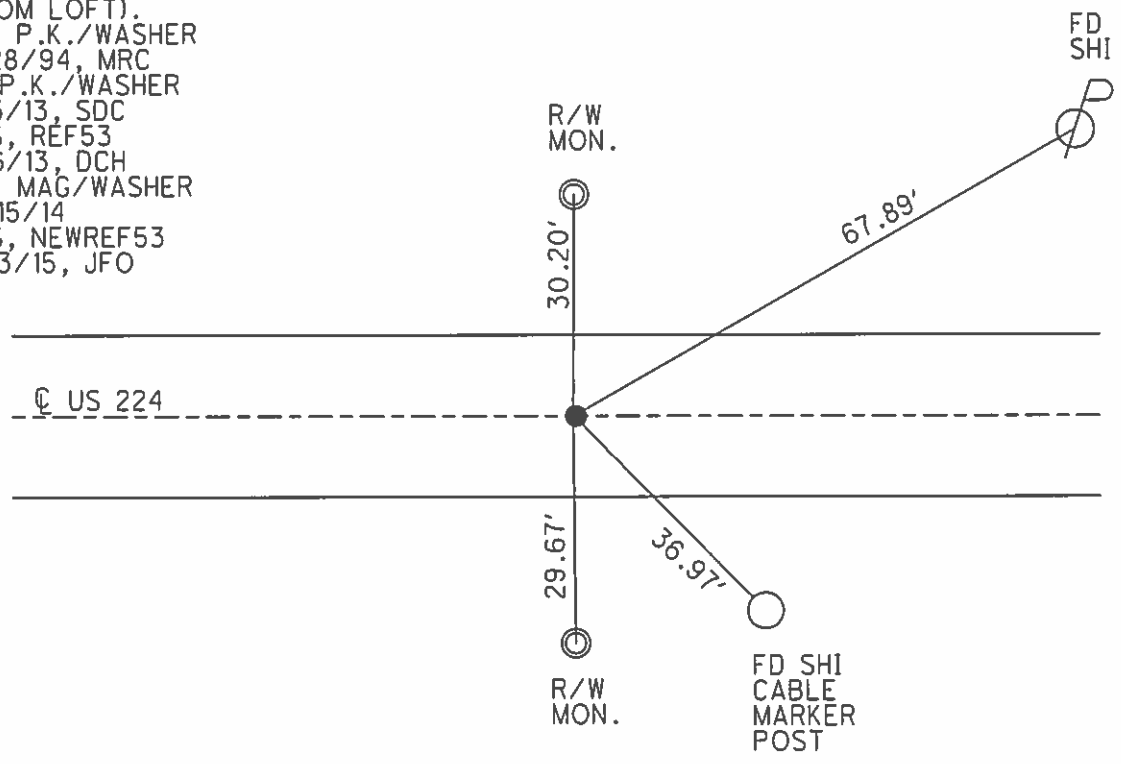
PERSONNEL \_\_\_\_\_ REFERENCE NO. 53 SHEET 11 OF 19  
 NOTES HOMAN DATE 9/8/14 ROUTE SR 224  
 H.C. LEU WEATHER FAIR COUNTY SENECA  
 R.C. HOMAN TEMP. 56° TOWNSHIP EDEN  
 \_\_\_\_\_ SECTION 3  
 \_\_\_\_\_ T 1 N R 15 E

TYPE MONUMENT P.K./WASHER  
~~ON SURFACE~~ - BELOW 1"  
 LEFT - ☉ PAV'T - RIGHT ON  
9.3' TO RT EDGE PAVEMENT  
 S.L.M. 864+43.33



Grid: Northing: 515763.316 Easting: 1797030.830

RECORD: P.I.  
 STA: 914+58.61  
 BOAT SPIKE ATOP  
 R.R.SPIKE  
 FIELD BOOK#54.  
 (FROM LOFT).  
 SET P.K./WASHER  
 9/28/94, MRC  
 FD P.K./WASHER  
 1/15/13, SDC  
 GPS, REF53  
 1/16/13, DCH  
 SET MAG/WASHER  
 12/15/14  
 GPS, NEWREF53  
 7/13/15, JFO



# O.D.O.T. DISTRICT 2 SURVEY OFFICE

PERSONNEL

REFERENCE NO. 53

SHEET 7 OF 16

NOTES CHANEY

H.C. RIPLLE

R.C. BARBONR

DATE 5-2-94

WEATHER FAIR

TEMP. 56

ROUTE 224

COUNTY SENECA

TOWNSHIP Clinton

SECTION 34

T 2 N R 15 E

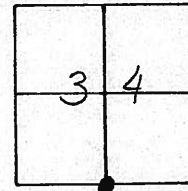
TYPE MONUMENT P.K. / WASHER

ON SURFACE - BELOW Yes

LEFT - C PAV'T. - RIGHT Q PYMT

9.3 TO RT EDGE PAVEMENT

S.L.M. 864.60



P.I.

914-5861

SET PK/WASHER ATOP BOAT SPK.

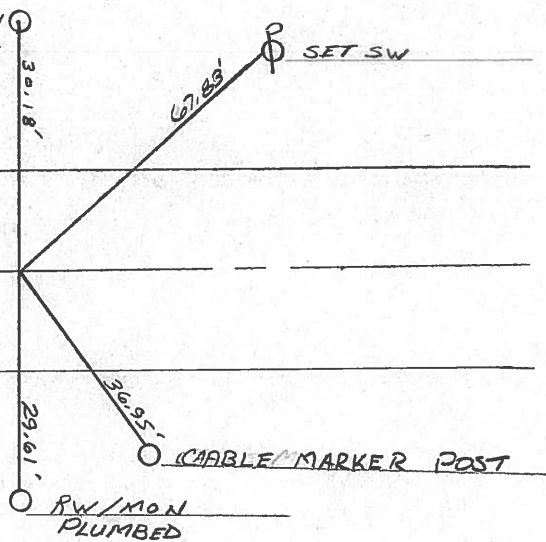
+ WASHER ATOP RR SPK

HUB - FIELD BOOK #54  
(FROM LOFT)

R/W MON  
CTR. PLATE

67.83'  
SET SW

Q US 224



SET PK/WASHER

9/28/94

MRC

County Seneca S.R. #224

Date 6/23/82

Township Clinton

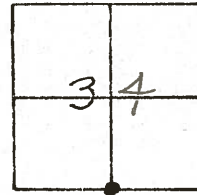
Weather sunny

Section 34

Temp. 73°

T2N, R15E

Personnel Cronin



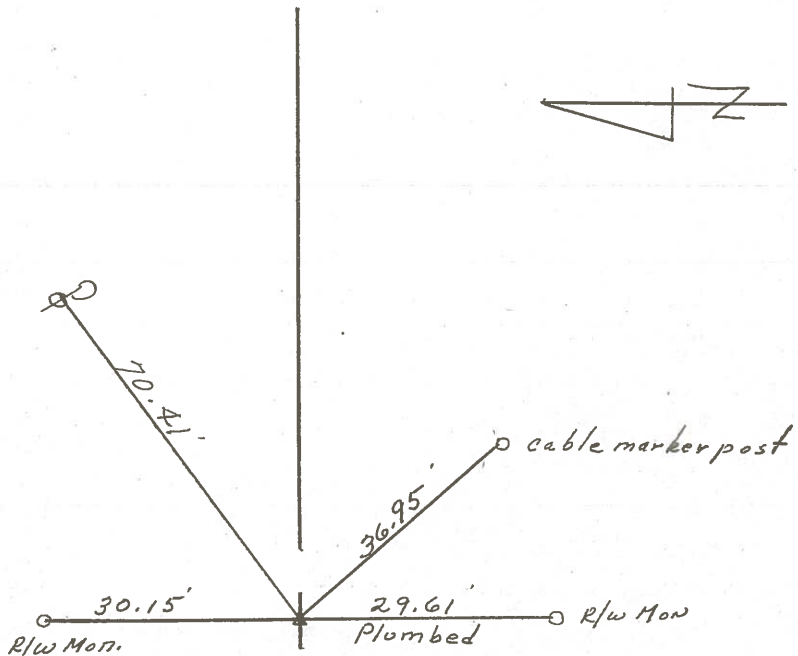
Ripple

Geyman

Mosser

Barbour

#53



P.I.

914 + 58.61

Set P.I. & washer atop boat spike  
and washer atop R.R. spike

HUB-FIELD BOOK #54 (FROM LOFT)

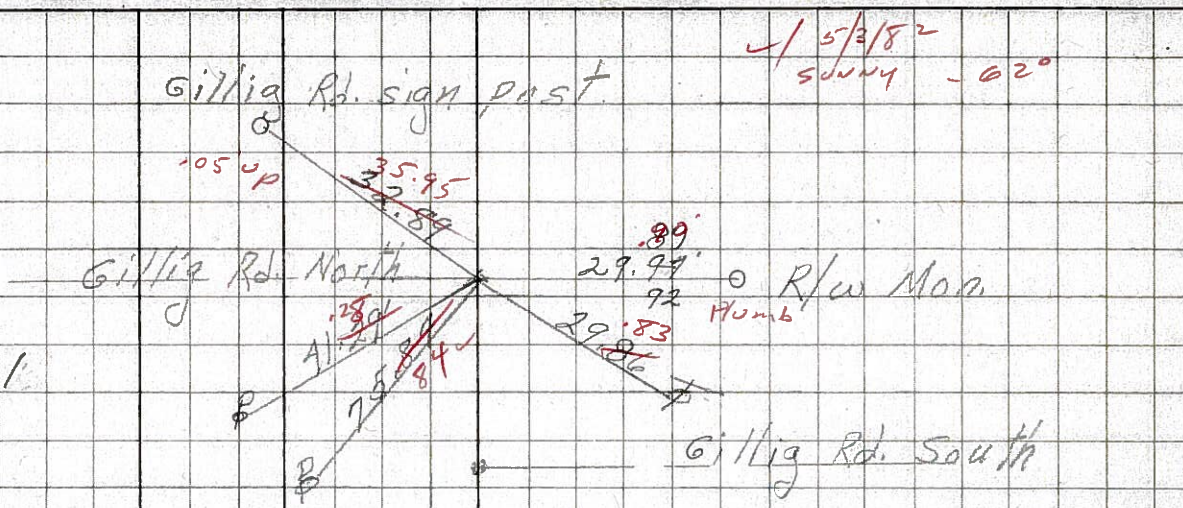
E U.S. #224

PERSONNEL	TITLE	PERSONNEL	TITLE	COUNTY	DATE	WEATHER	TEMP.
Schneider		Potts		Seneca	3-19-68	Fair	65°
Mosser				S. R. U.S. #224			
Barbour				SEC. S.R. #100 to Attic			
Rending							

DESCRIPTION Ties for Control Points JOB NO. \_\_\_\_\_

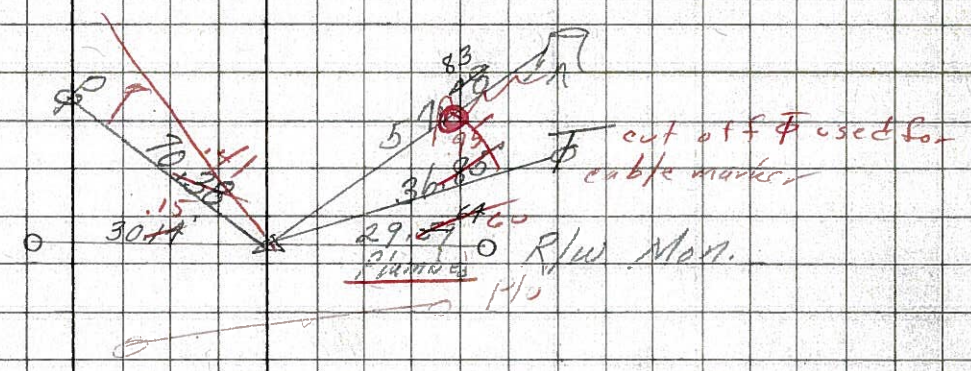
(54)

P.T.  
941+04.19  
R.R. SPK.  
Reset S.P.K. Nail  
8600



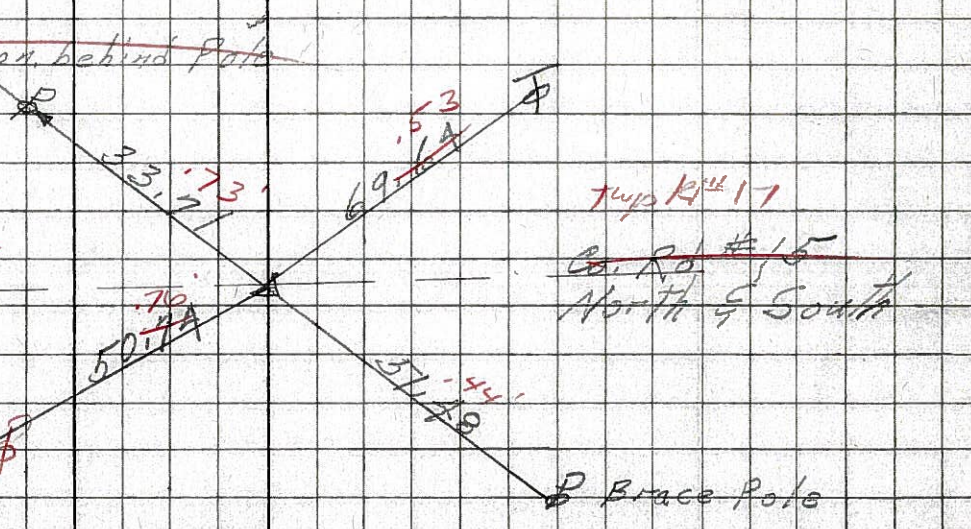
(53)

P.T.  
9/4+58.61  
R.R. SPK.  
Reset <sup>small</sup> spk. & washer  
8598



(52)

P.T.  
R.R. SPK.  
887+66.59  
Reset <sup>small</sup> spk. & washer  
8597



PERSONNEL TITLE PERSONNEL TITLE

KrabiLL

COUNTY Seneca

DATE

Kowaleski

S. R. 224

WEATHER

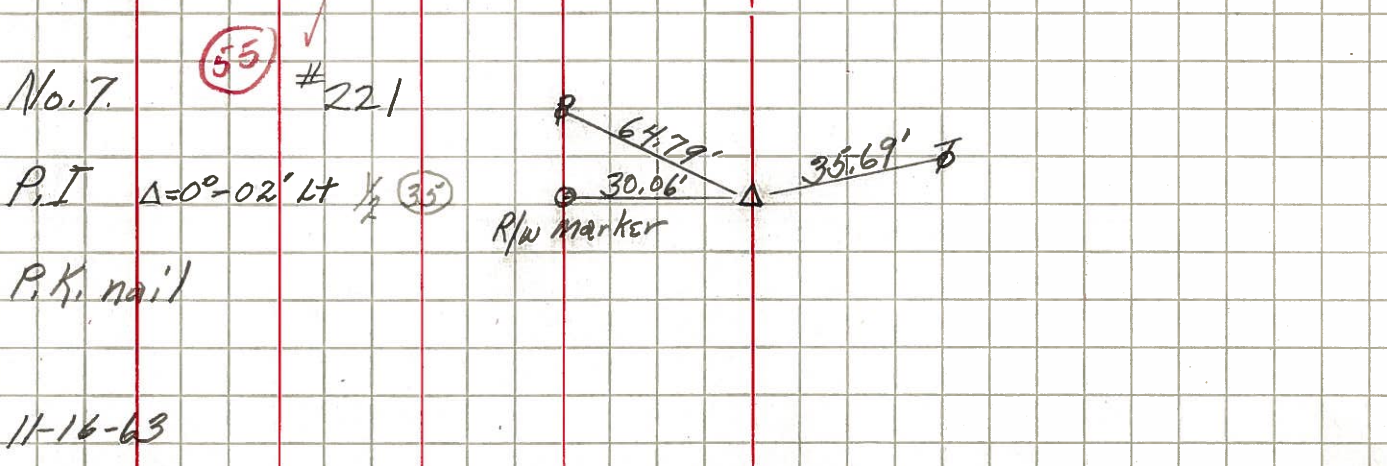
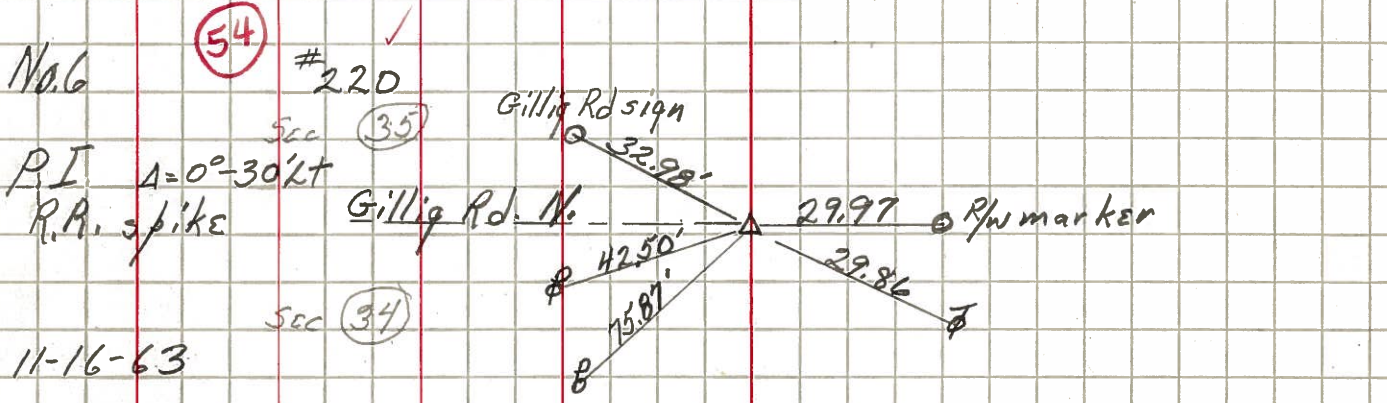
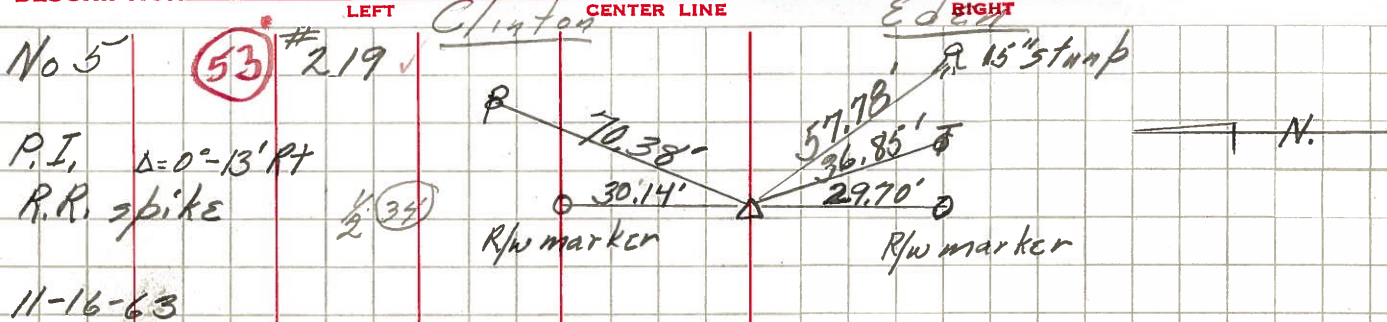
Brooks

SEC.

TEMP.

DESCRIPTION

JOB NO.



PERSONNEL TITLE PERSONNEL TITLE

COUNTY Semeca

DATE 11-24-53

S. R. 224

WEATHER

SEC. A

TEMP

DESCRIPTION S.H. 272 From intersection SE 100 to SE # 19 JOB NO. N

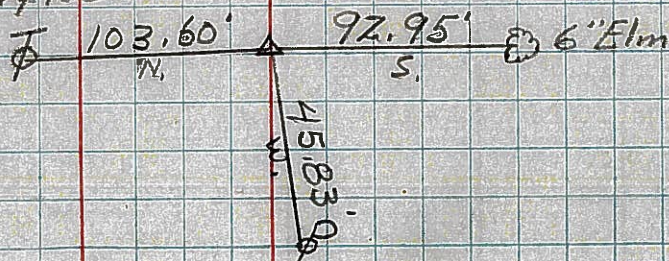
S.H. 272 Sec. A. Starting East of the intersection of SH. 199 on E of S.H. 272 Sec. A. No stationing on this section. Plat showing control points by No. following.

No. 1

Intersection SH. 224 #100

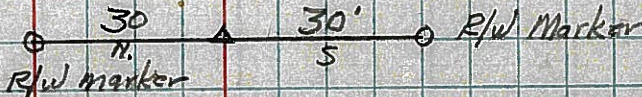
Found R.R. Spike & Pavement & on fence Line West

#215



No. 2

R.R. Spike on E of R/W



#216

No. 3

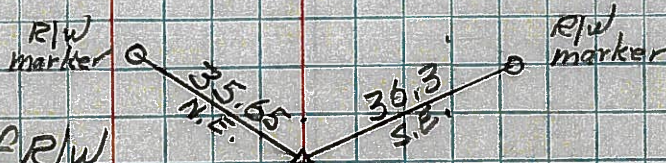
R.R. Spike on E of R/W



#217

No. 4

R.R. Spike on E of R/W



#218

No. 5

R.R. Spike on E of R/W



#219

50

51

52

53

PERSONNEL TITLE PERSONNEL TITLE

COUNTY Seneca DATE 11-24-53

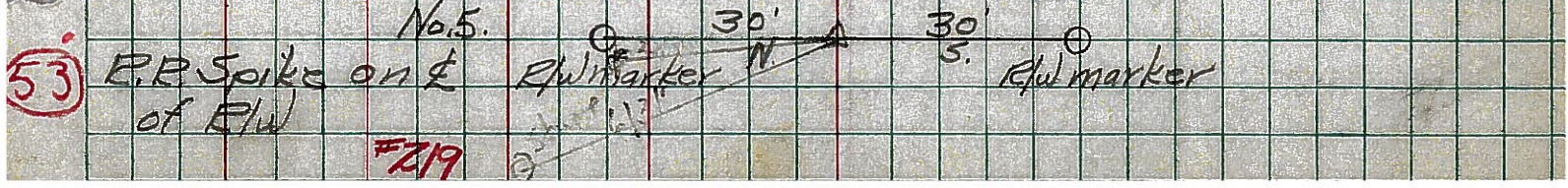
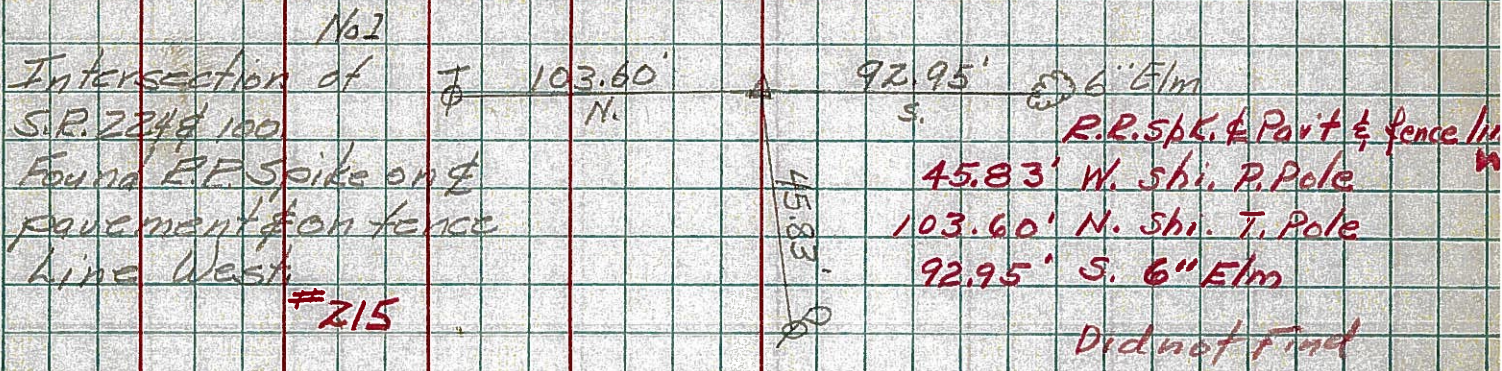
S. R. 224 WEATHER

SEC. A TEMP.

DESCRIPTION S.H. 272 From the intersection of S.P. 100 to S.P. 19 JOB NO.

LEFT CENTER LINE RIGHT

S.H. 272 Sec. A. Starting East of the intersection of S.H. 199 on E of S.H. 272 Sec. A. No stationing on this section. Plat showing control points by No. following.



50

51

52

53