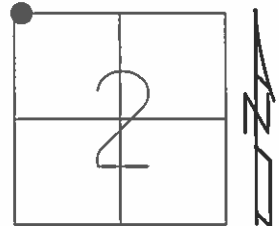


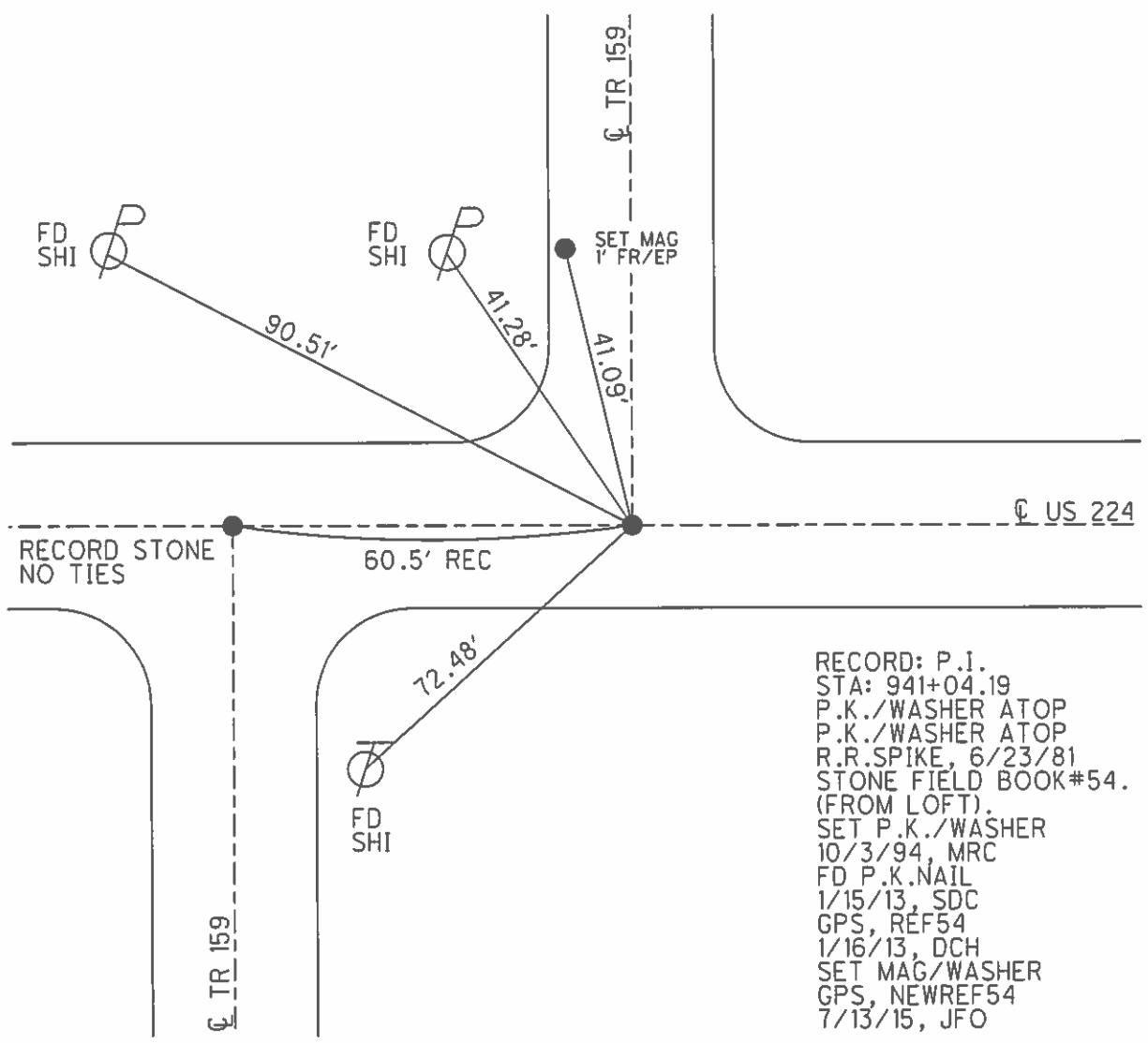
O.D.O.T. DISTRICT 2 SURVEY OFFICE (USE ONLY)

PERSONNEL _____ REFERENCE NO. 54 SHEET 12 OF 19
 NOTES HOMAN DATE 9/8/14 ROUTE SR 224
 H.C. LEU WEATHER FAIR COUNTY SENECA
 R.C. HOMAN TEMP. 60° TOWNSHIP EDEN
 SECTION 2
 T 1 N R 15 E

TYPE MONUMENT P.K./WASHER
 ON SURFACE - ~~BELOW~~ 2"
~~LEFT~~ - Q PAV'T - RIGHT 1.0'
8.5' TO RT EDGE PAVEMENT
 S.L.M. 890+89.35



Grid: Northing: 515730.287 Easting: 1799676.622



RECORD: P.I.
 STA: 941+04.19
 P.K./WASHER ATOP
 P.K./WASHER ATOP
 R.R.SPIKE, 6/23/81
 STONE FIELD BOOK#54.
 (FROM LOFT).
 SET P.K./WASHER
 10/3/94, MRC
 FD P.K.NAIL
 1/15/13, SDC
 GPS, REF54
 1/16/13, DCH
 SET MAG/WASHER
 GPS, NEWREF54
 7/13/15, JFO

O.D.O.T. DISTRICT 2 SURVEY OFFICE

PERSONNEL

REFERENCE NO. 54

SHEET 8 OF 16

NOTES CHANEY

H.C. RIPPLE

R.C. BARBOUR

DATE 5-2-94

WEATHER FAIR

TEMP. TS6

ROUTE S.R.224

COUNTY SENECA

TOWNSHIP CLINTON

SECTION 34

T2 N R 15 E

Reset P.K./WASHER
10-3-94
MRC

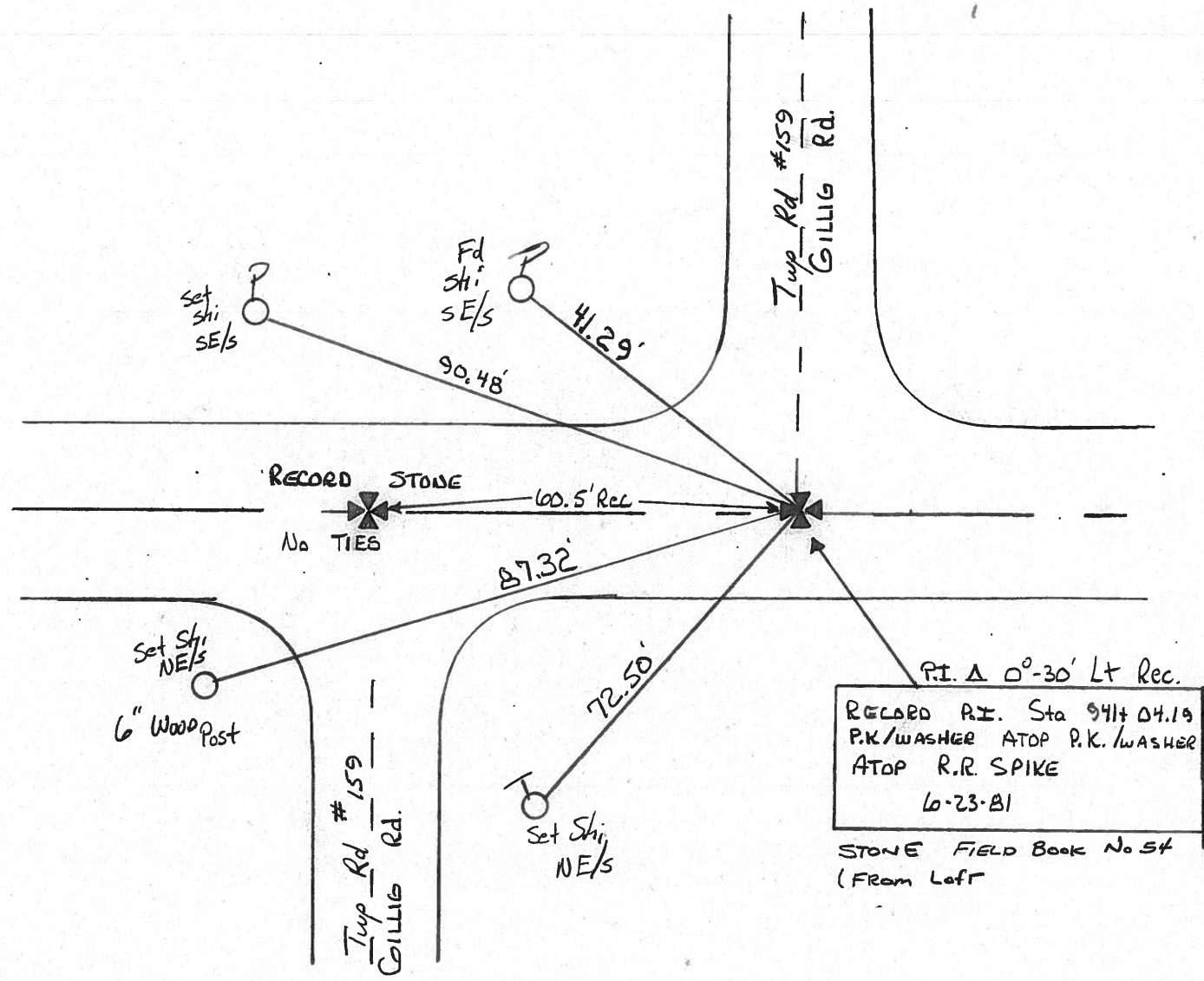
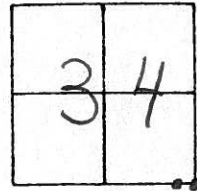
TYPE MONUMENT P.K./WASHER

ON SURFACE - BELOW Yes

LEFT - & PAV'T. - RIGHT 1.0'

8.5 TO RT EDGE PAVEMENT

S.L.M. 891 + 11



PI. A 0°-30' Lt Rec.
RECORD P.I. Sta 941+04.19
P.K./WASHER ATOP P.K./WASHER
ATOP R.R. SPIKE
6-23-81

STONE FIELD BOOK No 54
(From Left)

County Seneca S.R. # 224

Date 6/23/81

Township Clinton

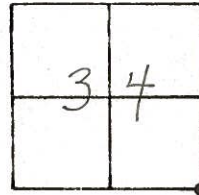
Weather sunny

Section 34

Temp. 73°

T 2 N, R 15 E

Personnel Cronin



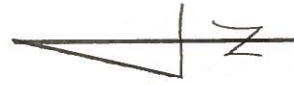
#54

Ripple

Geyman

Mosser

Barbour



P.I.

941+04.19

Set P.R. washer atop P.R.

atop R.R. spike

STONE-FIELD BOOK #54 (FROM LOFT)

Twp. Rd. #159
Gilling Rd.

29.89'
Plumbed

29.83'

41.28'

25.84'

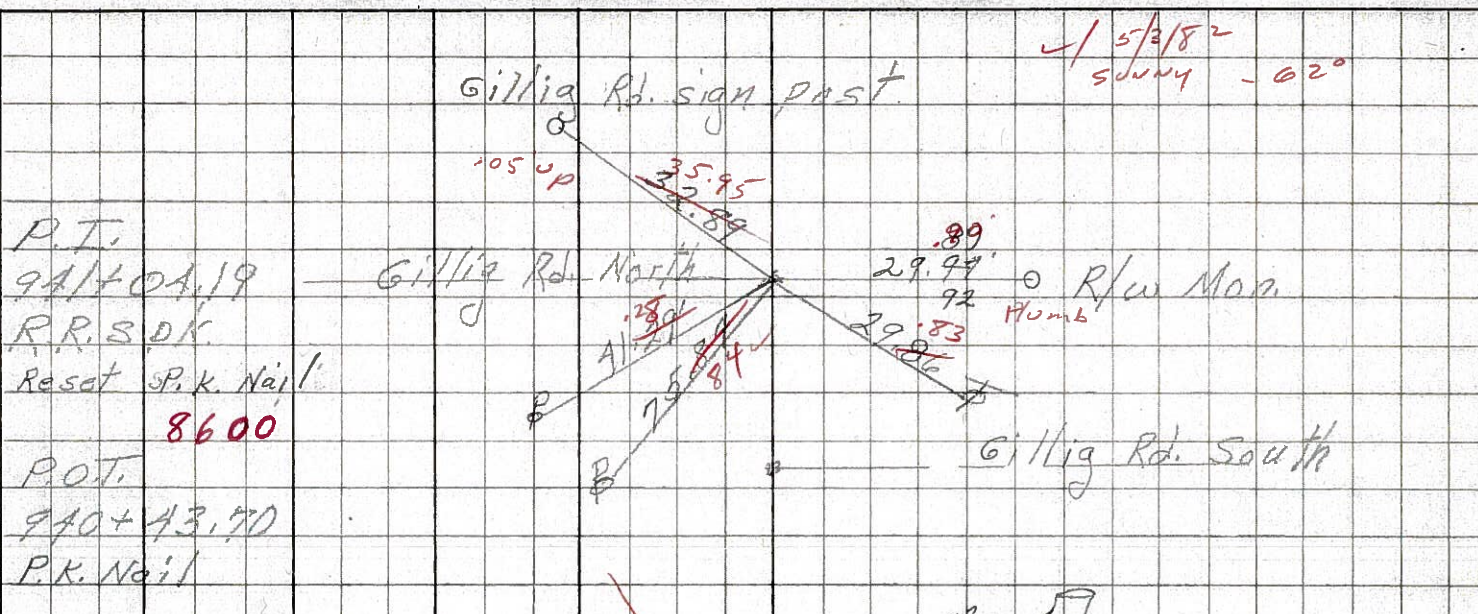
Twp. Rd. #159

STONE-FIELD BOOK #54 (FROM LOFT)

R U.S. #224

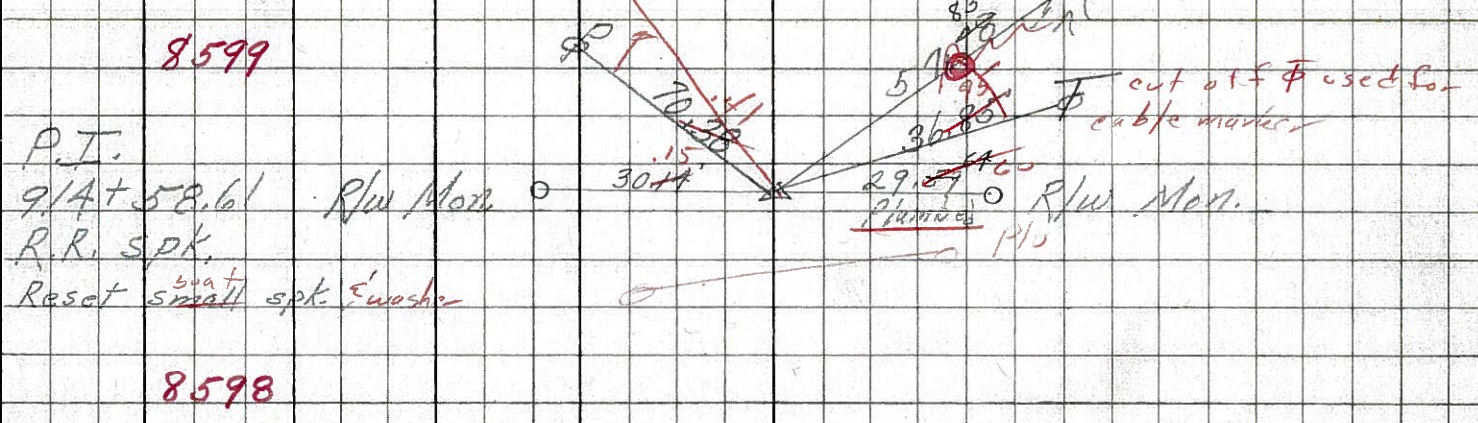
PERSONNEL TITLE PERSONNEL TITLE COUNTY Seneca DATE 3-19-68
Schneider _____ Potts _____ S. R. U.S. #224 WEATHER Fair
Mosser _____ _____ SEC. S.R.#100 to Attic TEMP. 65°
Barbour _____ _____
Redding _____ _____
 DESCRIPTION Ties for Control Points JOB NO. _____

(54)



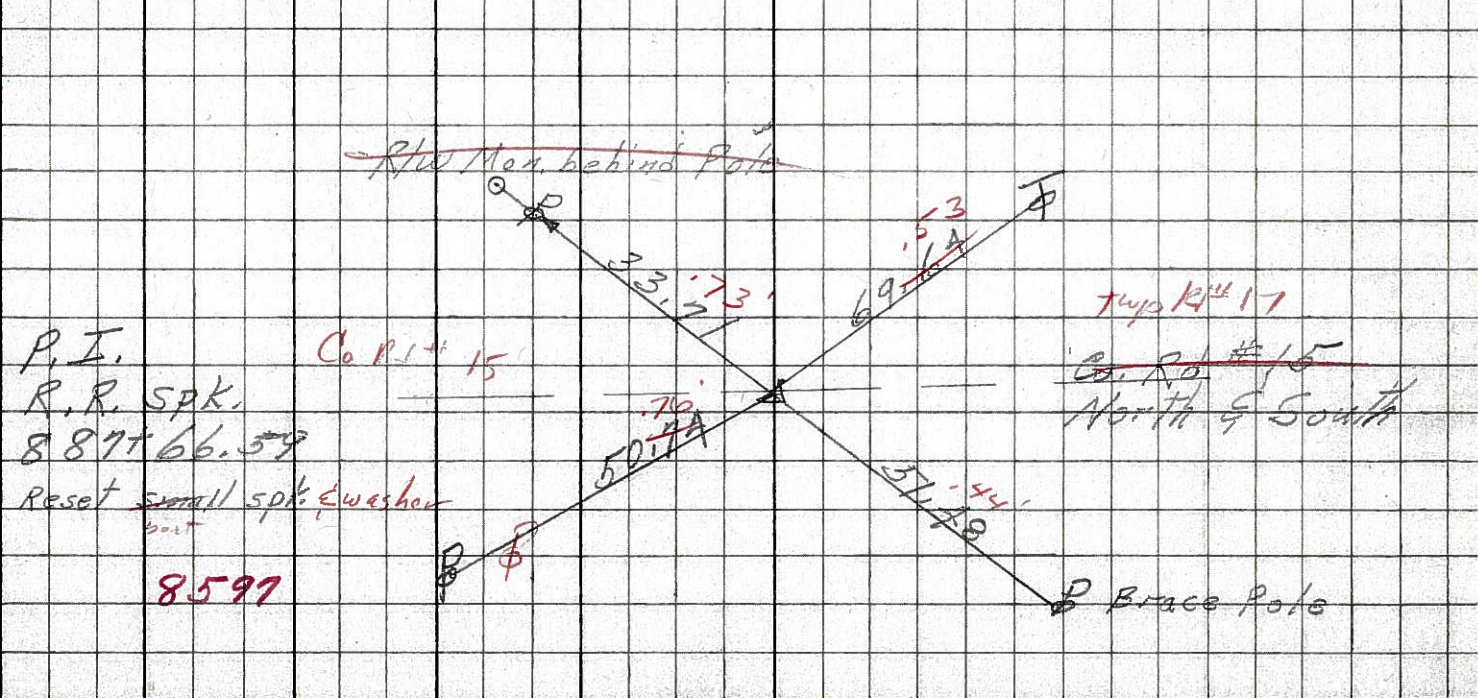
P.T.
 941+04.19
 R.R. S.P.K.
 Reset S.P.K. Nail
8600
 P.O.T.
 940+43.70
 P.K. Nail

(53)



P.T.
 914+58.61
 R.R. S.P.K.
 Reset ^{small} spk. Ewasher

(52)

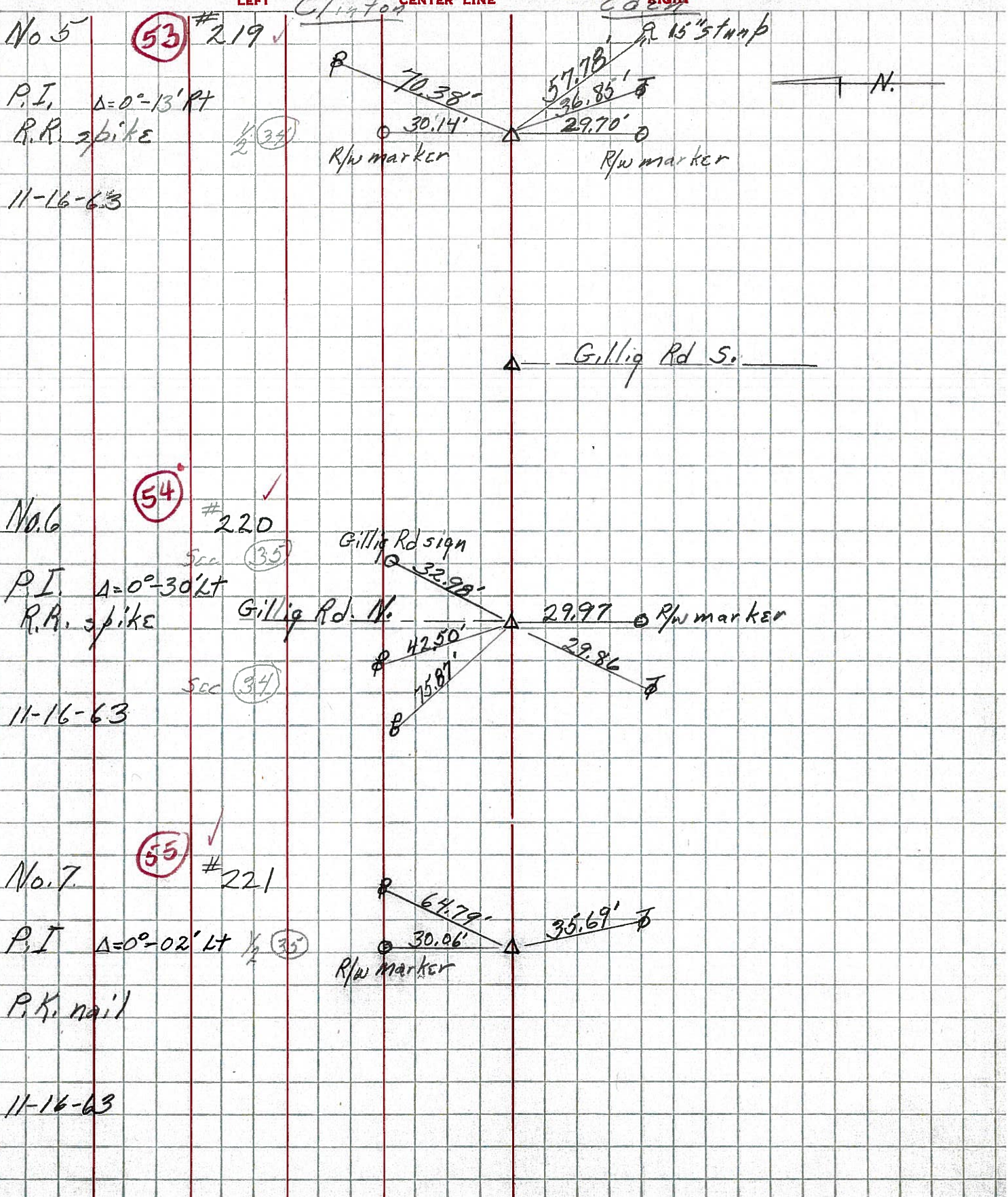


P.T.
 R.R. S.P.K.
 887+66.59
 Reset ^{small} spk. Ewasher

8597

PERSONNEL	TITLE	PERSONNEL	TITLE	COUNTY	DATE	S. R.	WEATHER	SEC.	TEMP.
KRABILL				Seneca		224			
Kowaleski									
Brooks									

DESCRIPTION _____ LEFT _____ CENTER LINE _____ RIGHT _____ JOB NO. _____



PERSONNEL TITLE PERSONNEL TITLE

COUNTY Seneca DATE 11-24-53

S. R. #224 WEATHER

SEC. A TEMP.

DESCRIPTION S.H. 272 LEFT CENTER LINE RIGHT JOB NO.

