

O.D.O.T. DISTRICT 2 SURVEY OFFICE (USE ONLY)

PERSONNEL _____ REFERENCE NO. 55 SHEET 13 OF 19
 NOTES HOMAN DATE 9/8/14 ROUTE SR 224
 H.C. LEU WEATHER FAIR COUNTY SENECA
 R.C. HOMAN TEMP. 65° TOWNSHIP EDEN
 _____ SECTION 2
 _____ T 1 N R 15 E

TYPE MONUMENT P.K./WASHER

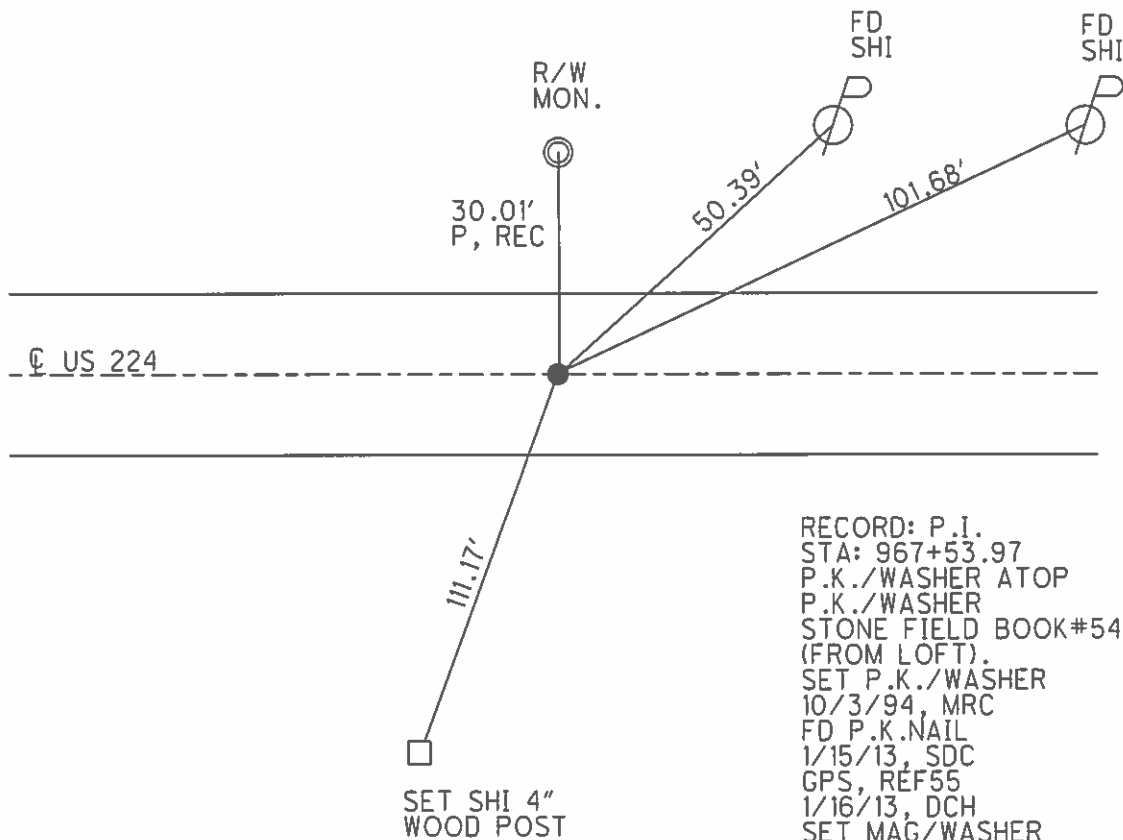
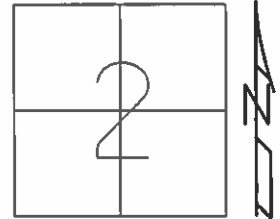
~~ON SURFACE~~ - BELOW 2"

LEFT - ☉ PAV'T - ~~RIGHT~~ 0.5'

10.0' TO LT EDGE PAVEMENT

S.L.M. 917+38.98

Grid: Northing: 515720.224 Easting: 1802326.276



RECORD: P.I.
 STA: 967+53.97
 P.K./WASHER ATOP
 P.K./WASHER
 STONE FIELD BOOK#54.
 (FROM LOFT).
 SET P.K./WASHER
 10/3/94, MRC
 FD P.K.NAIL
 1/15/13, SDC
 GPS, REF55
 1/16/13, DCH
 SET MAG/WASHER
 GPS, NEWREF55
 7/13/15, JFO

O.D.O.T. DISTRICT 2 SURVEY OFFICE

PERSONNEL _____

REFERENCE NO. 55

SHEET 9 OF 16

NOTES CHANEY

H.C. RIPPLE

R.C. BARBOUR

DATE 5-2-94

WEATHER FAR

TEMP. +60

ROUTE 224

COUNTY SENECA

TOWNSHIP CLINTON

SECTION 35

T 2 N R 15 E

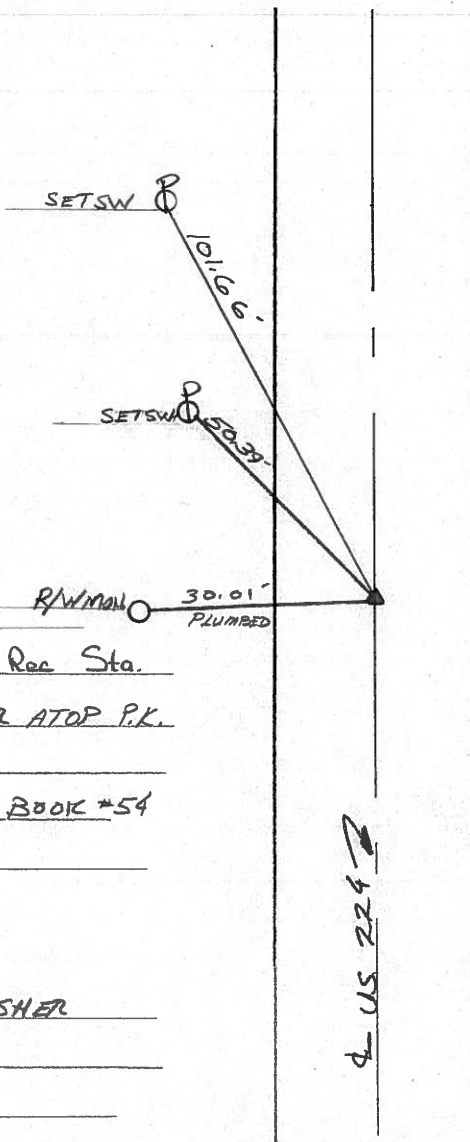
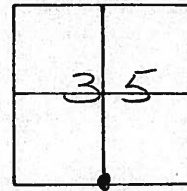
TYPE MONUMENT P.K. / WASHER ^{Reset} 10-3-94

ON SURFACE - BELOW Yes

LEFT - LT PAV'T. - RIGHT 0.5' LT

10' TO LT EDGE PAVEMENT

S.L.M. 917-72



P.I. RAWMAN 30.01'
PLUMBED
967+53.97 Rec Sta.
SET PK/WASHER ATOP P.K.
ATOP P.K.
STONE FIELD BOOK #54
(FROM LOFT)
Rec. Δ = 0'-2' Lt
SET PK/WASHER
1013194
MRC

4 US 224

County Seneca S.R. #224

Date 6/23/82

Township Clinton

Weather sunny

Section 35

Temp. 73°

T2N, R15E

Personnel Cronin

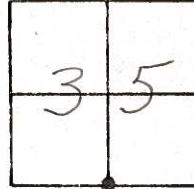
Ripple

Geyman

Mosser

Barbour

#55



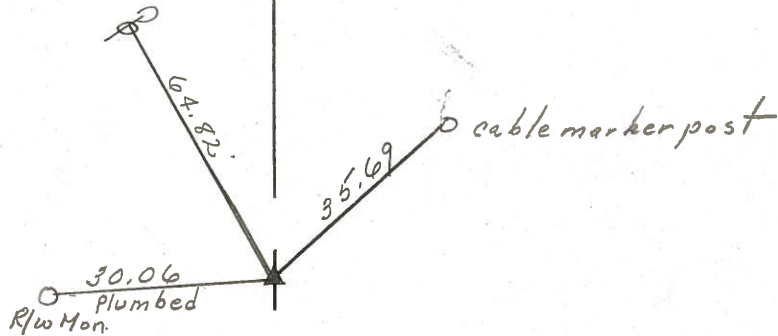
P.I. _____

967+53.97

Set P.K. & washer at top P.K.

at top P.K.

STONE - FIELD BOOK #54 (FROM LEFT)



R. U.S. #224

PERSONNEL TITLE PERSONNEL TITLE

Schneider _____ Potts _____
Mosser _____ _____
Barbour _____ _____
Redding _____ _____

COUNTY Seneca

DATE 7-30-68
3-19-68

S. R. U.S.#224

WEATHER Fair

SEC. S.R.#100 to Attica

TEMP. 65°

DESCRIPTION

Ties for Control Points

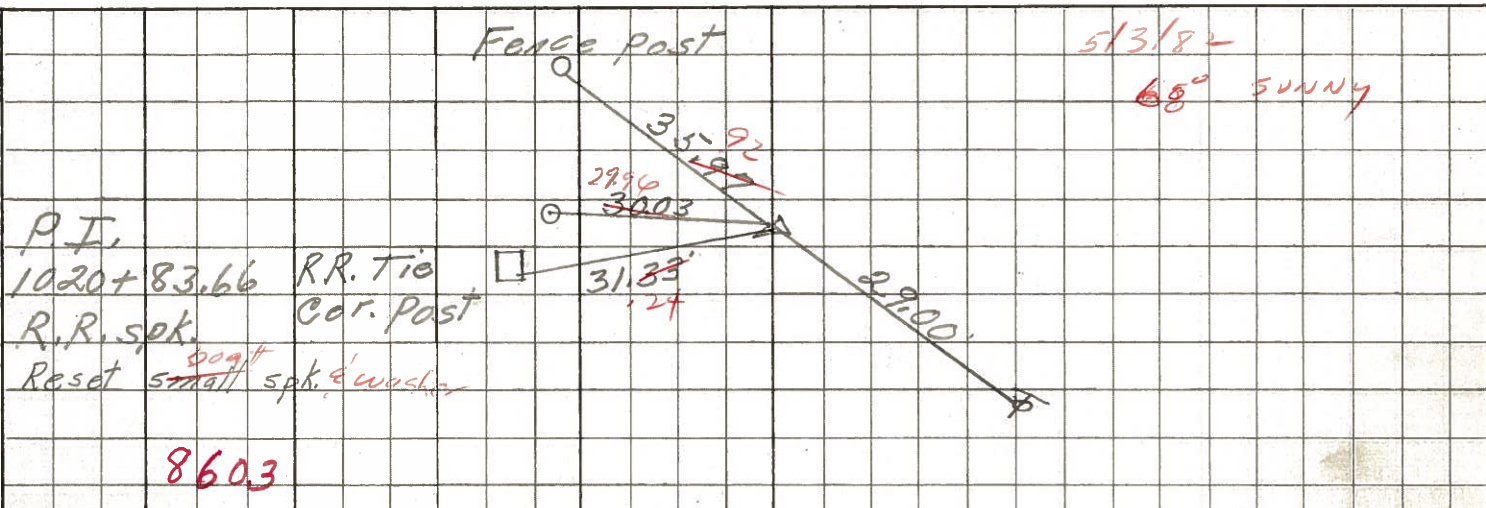
JOB NO. _____

LEFT

CENTER LINE

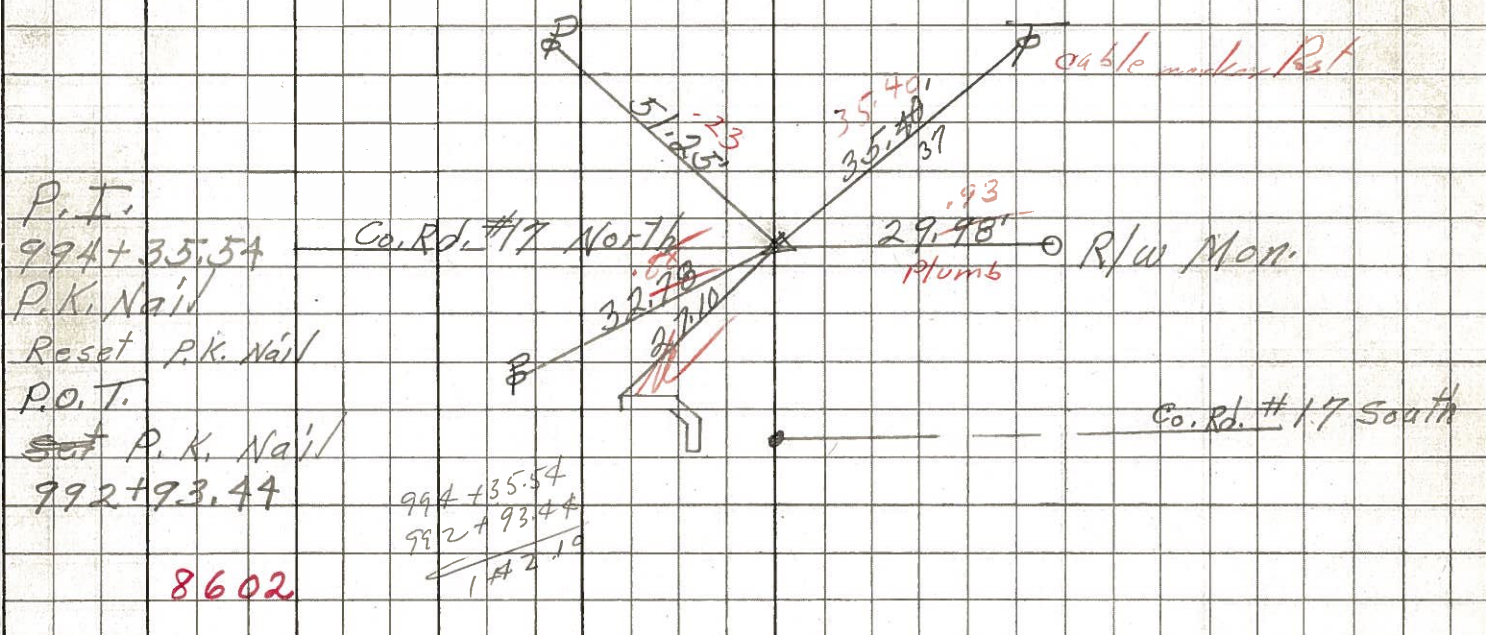
RIGHT

(57)



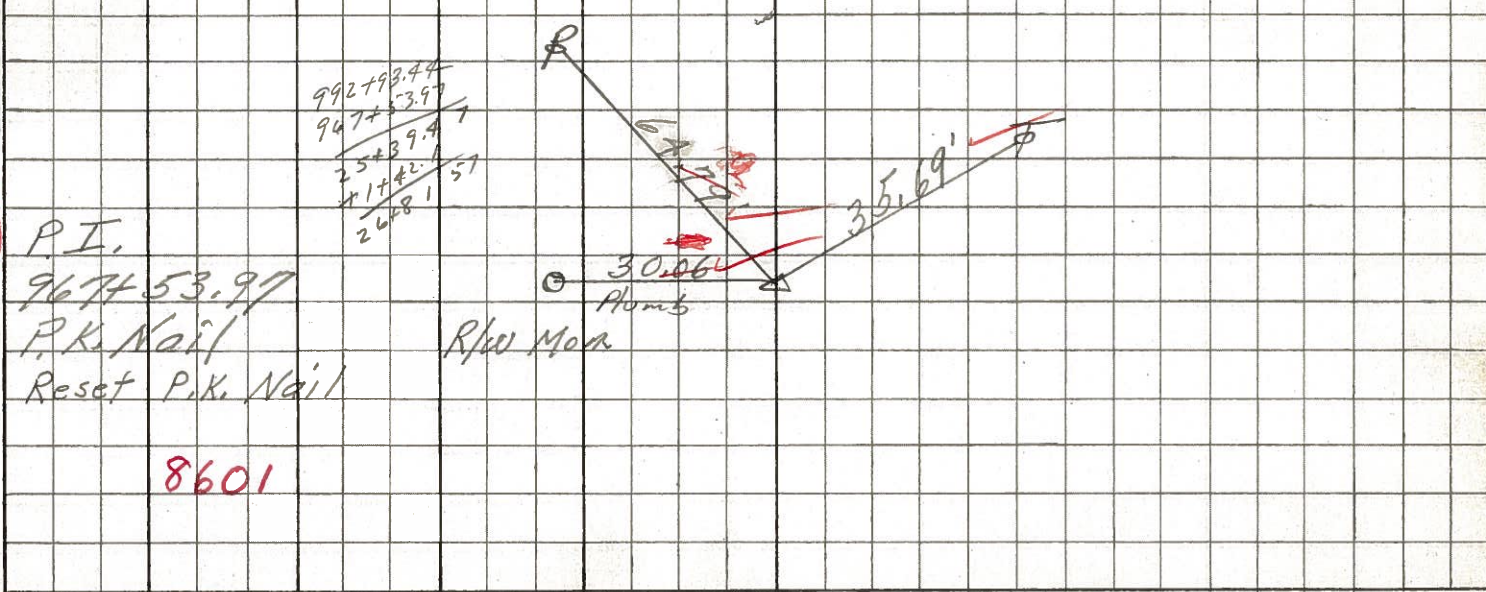
8603

(56)



8602

(55)



8601

PERSONNEL	TITLE	PERSONNEL	TITLE	COUNTY	DATE
KRABILL				Seneca	
Kowalowski				S. R. 224	WEATHER
Brooks				SEC.	TEMP.

DESCRIPTION	LEFT	CENTER LINE	RIGHT	JOB NO.
No. 5 P.I. $\Delta = 0^\circ - 13' RT$ R.R. spike 11-16-63	(53) # 219 ✓ $\frac{1}{2}$ (34)	Clinton R/w marker 30.14'	Eden R/w marker 29.70' 36.85' 57.78' 15" stamp N.	
No. 6 P.I. $\Delta = 0^\circ - 30' LT$ R.R. spike 11-16-63	(54) # 220 ✓ Sec (35) Sec (34)	Gillig Rd sign Gillig Rd. N. R/w marker 32.98' 42.50' 75.87'	R/w marker 29.97' 29.86'	
No. 7 P.I. $\Delta = 0^\circ - 02' LT$ P.K. nail 11-16-63	(55) # 221 ✓ $\frac{1}{2}$ (35)	R/w marker 30.06'	64.79' 35.69'	

PERSONNEL TITLE PERSONNEL TITLE

COUNTY Seneca

DATE 11-24-53

S. R. #224

WEATHER

SEC. A

TEMP.

DESCRIPTION S.H. 272

LEFT

CENTER LINE

RIGHT

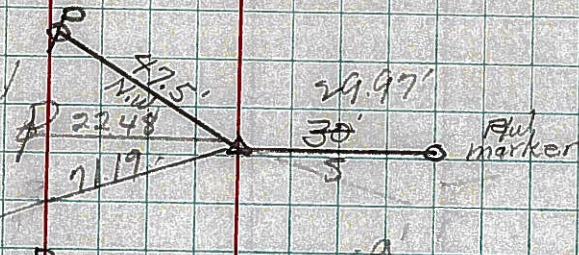
JOB NO.



54

R.R. Spike on E of R/W

#220

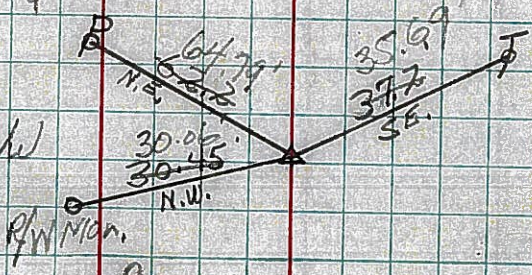


OK 4-29-60

55

R.R. Spike on E of R/W

#221

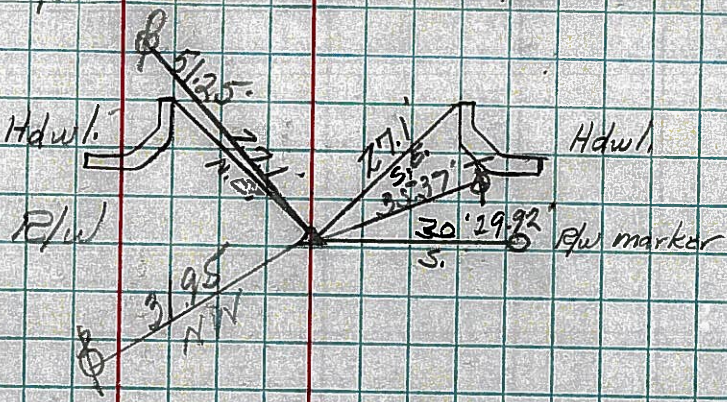


OK 4-29-60

56

R.R. Spike on E of R/W

#222

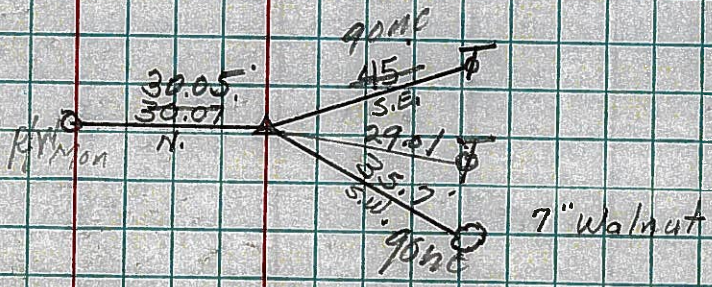


OK 4-29-60

57

R.R. Spike on E of R/W

#223

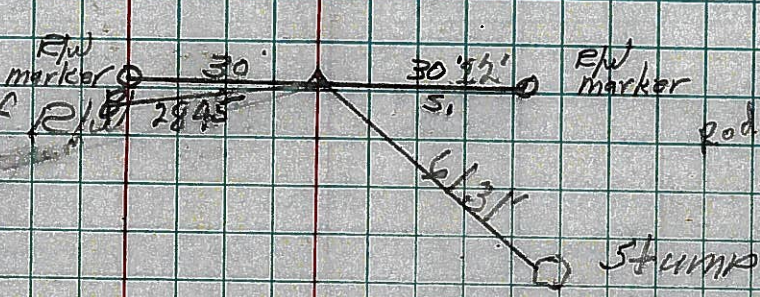


OK 4-29-60

58

R.R. Spike on E of R/W

#224



OK 4-27-60