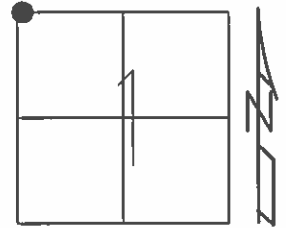


O.D.O.T. DISTRICT 2 SURVEY OFFICE (USE ONLY)

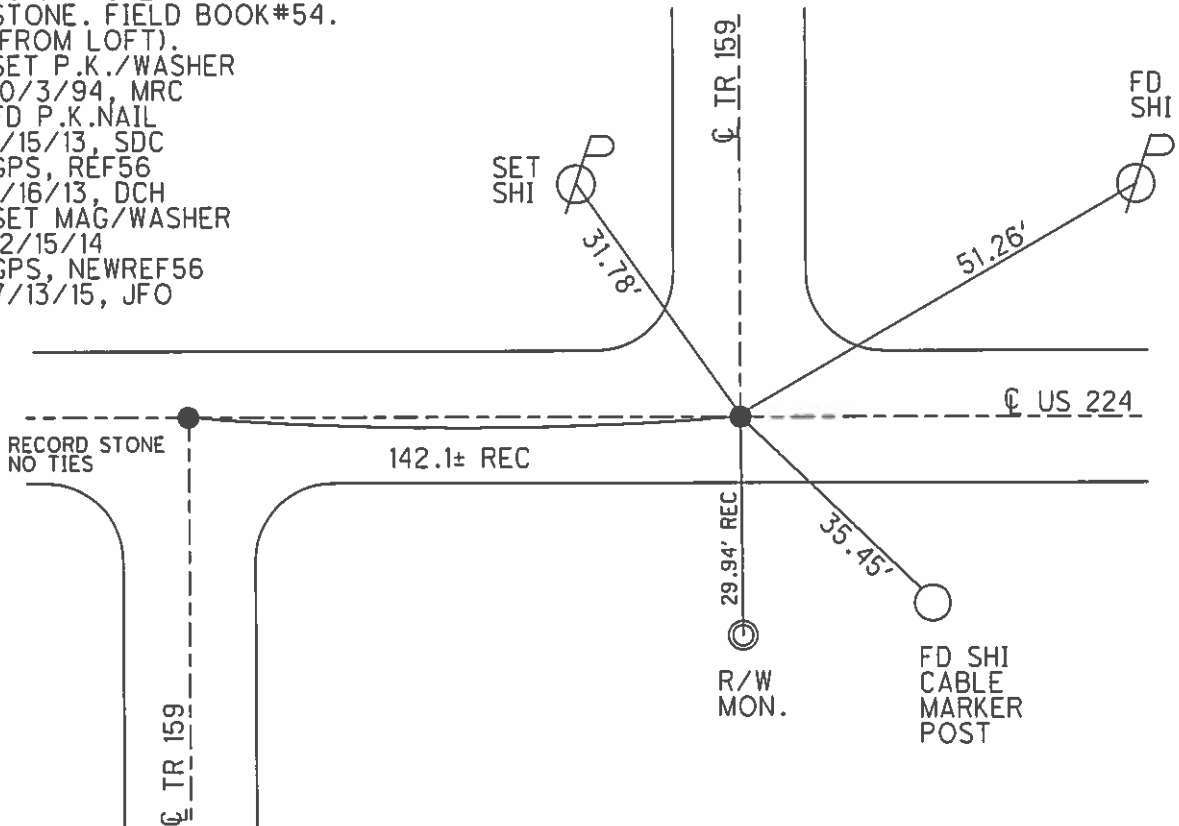
PERSONNEL _____ REFERENCE NO. 56 SHEET 14 OF 19
 NOTES HOMAN DATE 9/8/14 ROUTE SR 224
 H.C. LEU WEATHER FAIR COUNTY SENECA
 R.C. HOMAN TEMP. 70° TOWNSHIP EDEN
 _____ SECTION 1
 _____ T 1 N R 15 E

TYPE MONUMENT P.K.NAIL
 ON SURFACE - ~~BELOW~~ ON _____
~~LEFT~~ - CL PAV'T - RIGHT 1.0'
8.5' TO RT EDGE PAVEMENT
 S.L.M. 944+20.70



Grid: Northing: 515709.892 Easting: 1805007.981

RECORD: P.I.
 STA: 994+35.54
 $\Delta = 0^\circ 11' \text{ LT}$
 P.K./WASHER ATOP
 P.K./WASHER ATOP
 STONE. FIELD BOOK#54.
 (FROM LEFT).
 SET P.K./WASHER
 10/3/94, MRC
 FD P.K.NAIL
 1/15/13, SDC
 GPS, REF56
 1/16/13, DCH
 SET MAG/WASHER
 12/15/14
 GPS, NEWREF56
 7/13/15, JFO



O.D.O.T. DISTRICT 2 SURVEY OFFICE

PERSONNEL

REFERENCE NO. 56

SHEET 10 OF 16

NOTES CHANEY

H.C. RIPPLE

R.C. BARBOUR

DATE 5-2-94

WEATHER FAIR

TEMP. +60

ROUTE S.R. 224

COUNTY SENECA

TOWNSHIP CLINTON

SECTION 35

T 2 N R 15 E

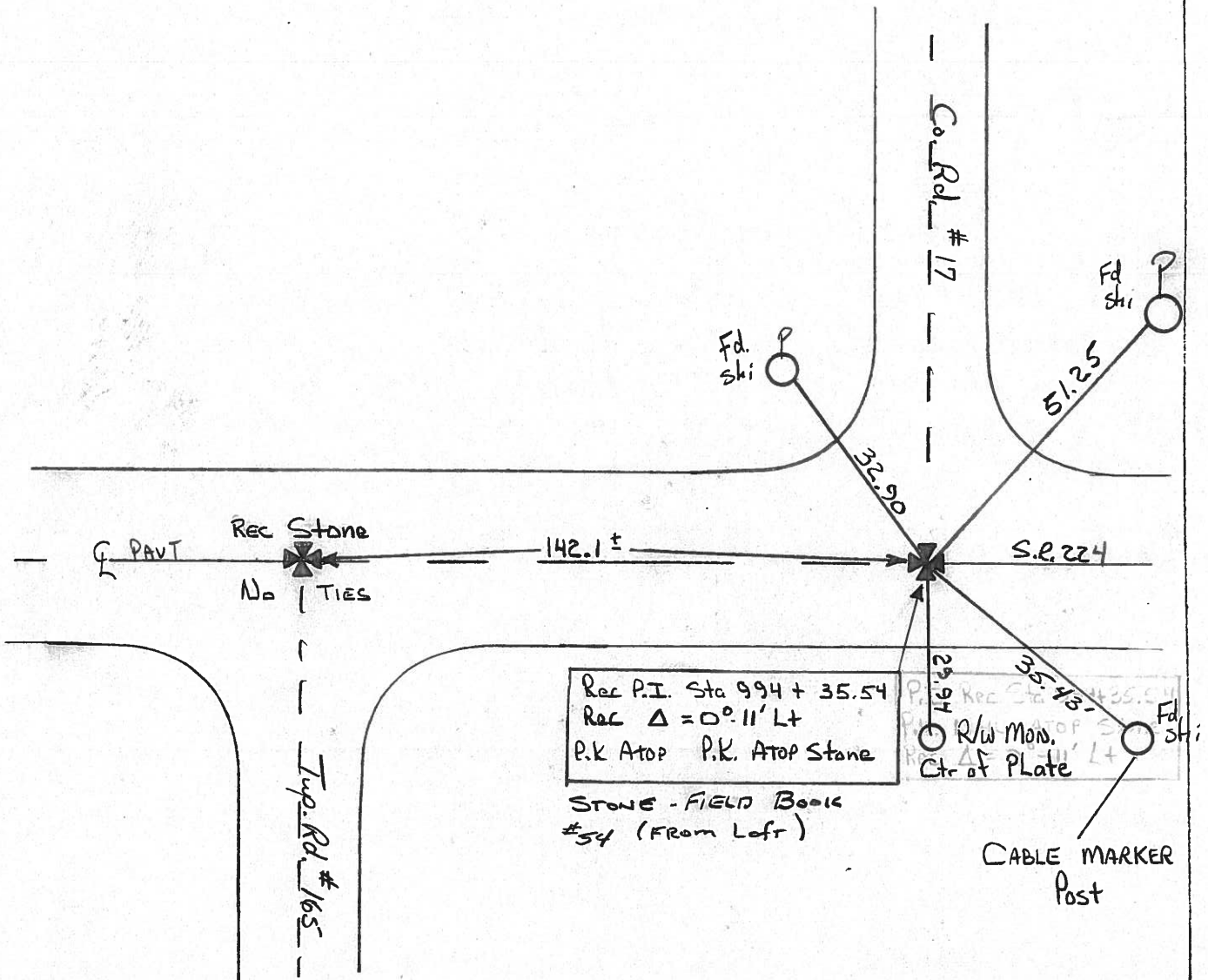
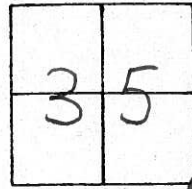
TYPE MONUMENT P.K. / WASHER Reset 10-3-94
MRC

ON SURFACE - ~~BELOW~~ Yes

~~LEFT~~ - C PAV'T. - RIGHT 1.0'

8.5 TO R+ EDGE PAVEMENT

S.L.M. 944+54



County Seneca S.R. # 224

Date 6/24/82

Township Clinton

Weather sunny

Section 35

Temp. 58°

T2N, R15E

Personnel Cronin

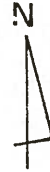
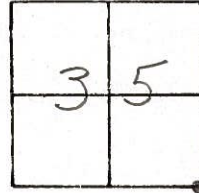
Ripple

Geyman

Mosser

Barbour

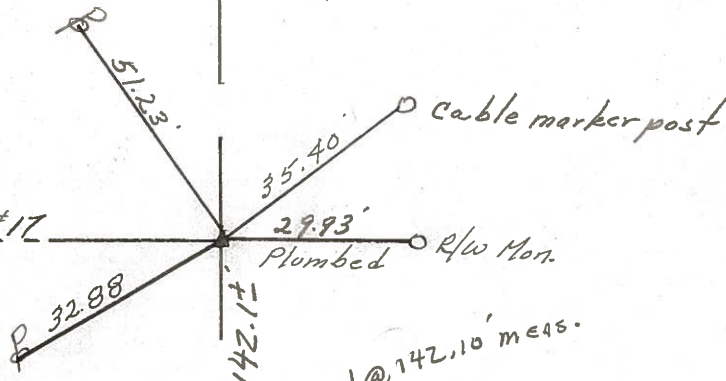
#56



P.T.
994+35.54
 Set P.K. & washer at top
 P.K.

STONE FIELD BOOK #54 (FROM LOFT)

Co. Rd. #17



COR. STONE FIELD BOOK #54 (FROM LOFT)
 TWP. RD #165

S.U.S. #224

PERSONNEL TITLE PERSONNEL TITLE
Schneider _____ Potts _____
Mosser _____
Barbour _____
Redding _____

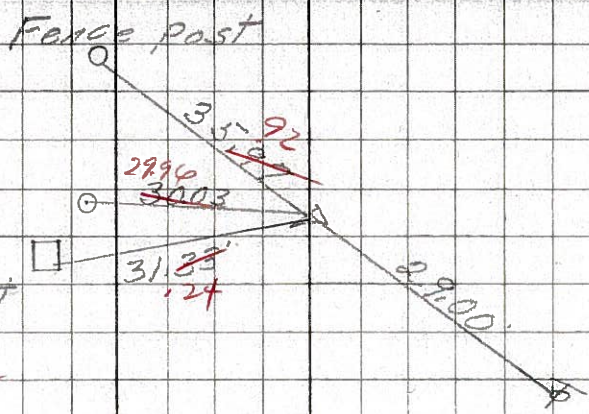
COUNTY Seneca
S. R. U.S. #224
SEC. S.R. #100 to Attica
WEATHER Fair
TEMP. 65°

DESCRIPTION Ties for control points
LEFT CENTER LINE RIGHT JOB NO.

(57)

P.I.
1020 + 83.66 RR. Tie
R.R. spk. Cor. Post
Reset ~~small~~ spk. & washer

8603

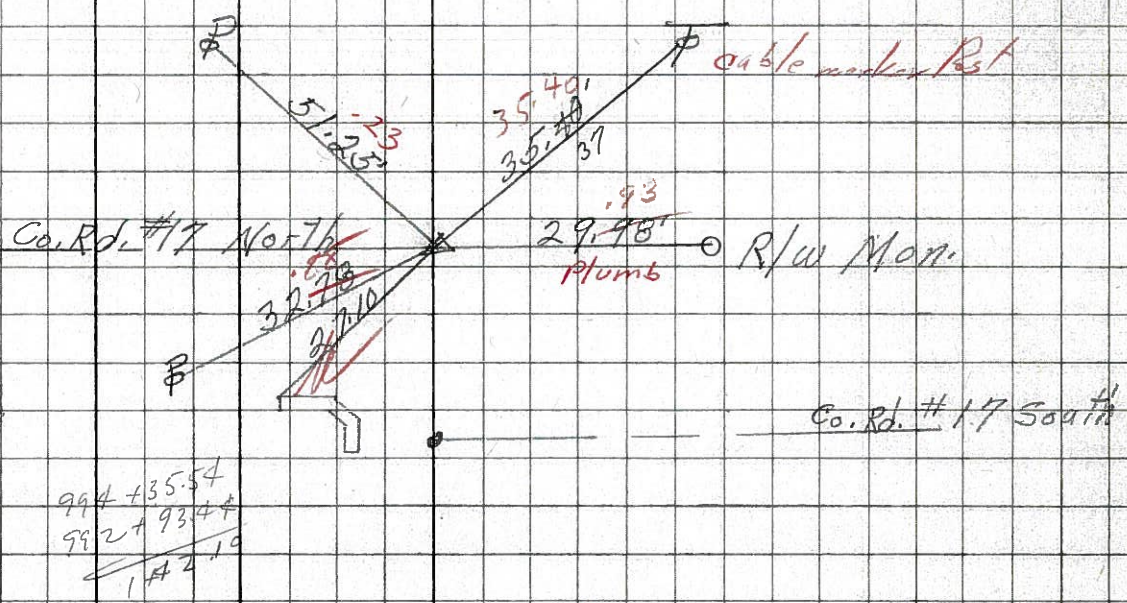


5/3/82
68° sunny

(56)

P.I.
994 + 35.54
P.K. Nail
Reset P.K. Nail
P.O.T.
Set P.K. Nail
992 + 93.44

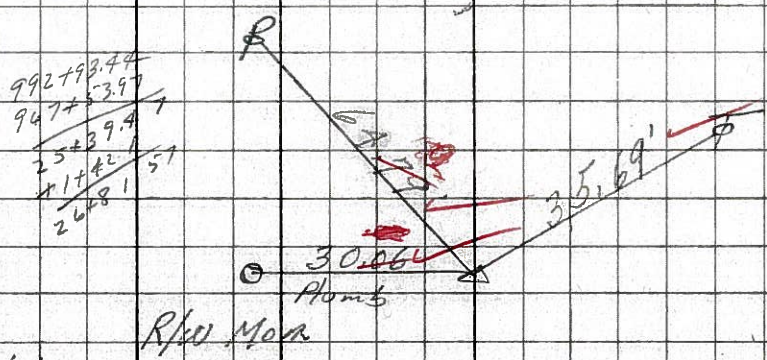
8602



(55)

P.I.
967 + 53.97
P.K. Nail
Reset P.K. Nail

8601



PERSONNEL TITLE PERSONNEL TITLE

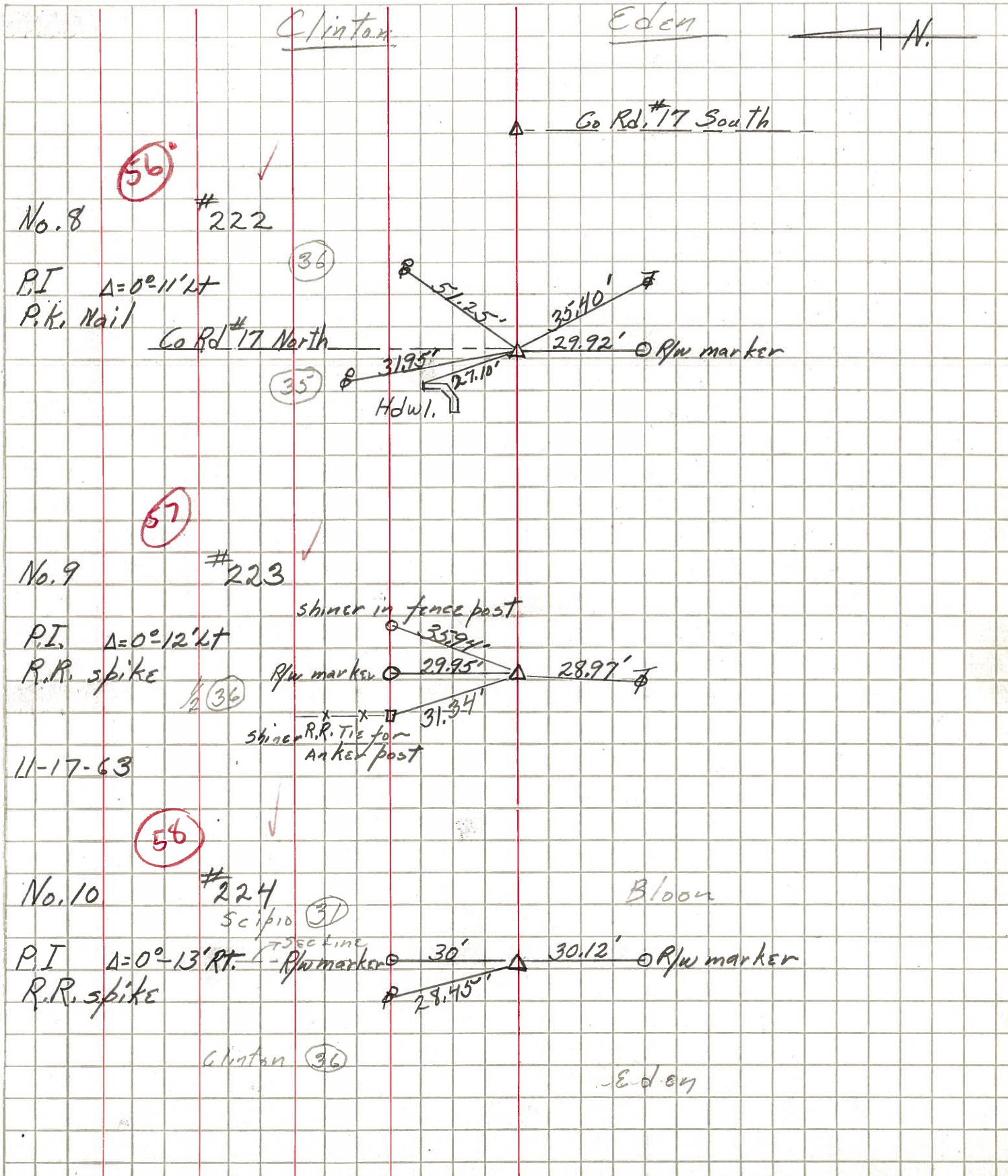
KraBill
Kowaleski
Brooks

COUNTY Seneca DATE _____

S. R. 224 WEATHER _____

SEC. _____ TEMP. _____

DESCRIPTION LEFT CENTER LINE RIGHT JOB NO.



PERSONNEL TITLE PERSONNEL TITLE

COUNTY Seneca DATE 11-24-53

S. R. #224

WEATHER

SEC. A

TEMP.

DESCRIPTION S.H. 272

LEFT

CENTER LINE

RIGHT

JOB NO.

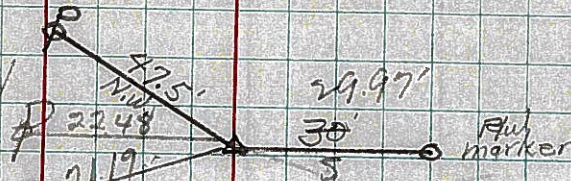


54

R.R. Spike on E of R/W

No. 6

#220



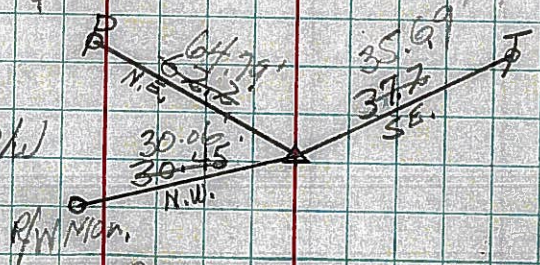
OK 4-29-60

55

R.R. Spike on E of R/W

No. 7

#221



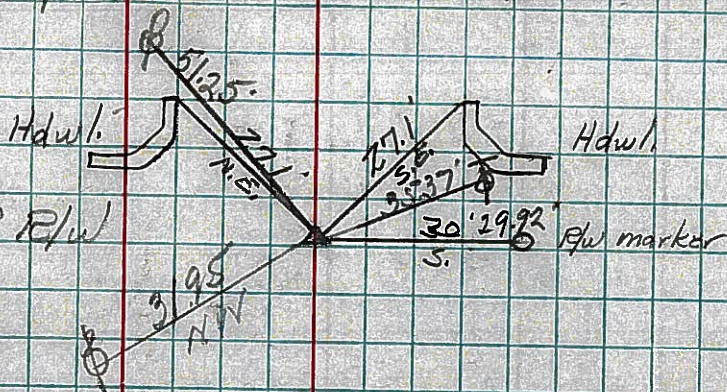
OK 4-29-60

56

R.R. Spike on E of R/W

No. 8

#222



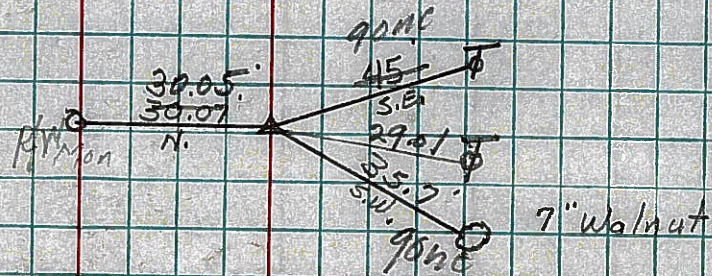
OK 4-29-60

57

R.R. Spike on E of R/W

No. 9

#223



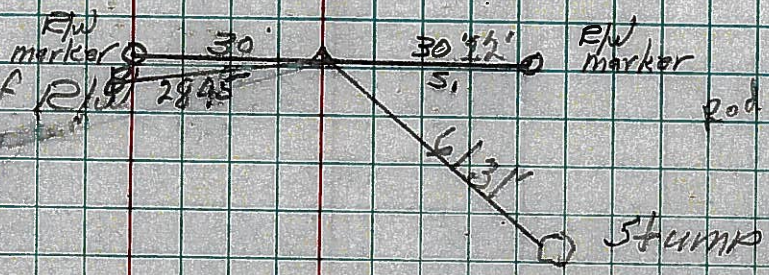
OK 4-29-60

58

R.R. Spike on E of R/W

No. 10

#224



OK 4-27-60