

O.D.O.T. DISTRICT 2 SURVEY OFFICE (USE ONLY)

PERSONNEL

REFERENCE NO. 57

SHEET 15 OF 19

NOTES HOMAN

DATE 9/9/14

ROUTE SR 224

H.C. LEU

WEATHER SUNNY

COUNTY SENECA

R.C. HOMAN

TEMP. 75°

TOWNSHIP EDEN

DWG BY TRENKA

PID 94957

SECTION 1

T 1 N R 15 E

TYPE MONUMENT P.K.WASHER

ON SURFACE - ~~BELOW~~ ON

OFFSET \varnothing PAVEMENT 0.5' LT : ~~RT~~

9.5' TO LT EDGE PAVEMENT

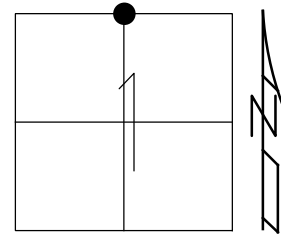
STATION: 970+69.07

HORZ.DATUM: NAD 2011

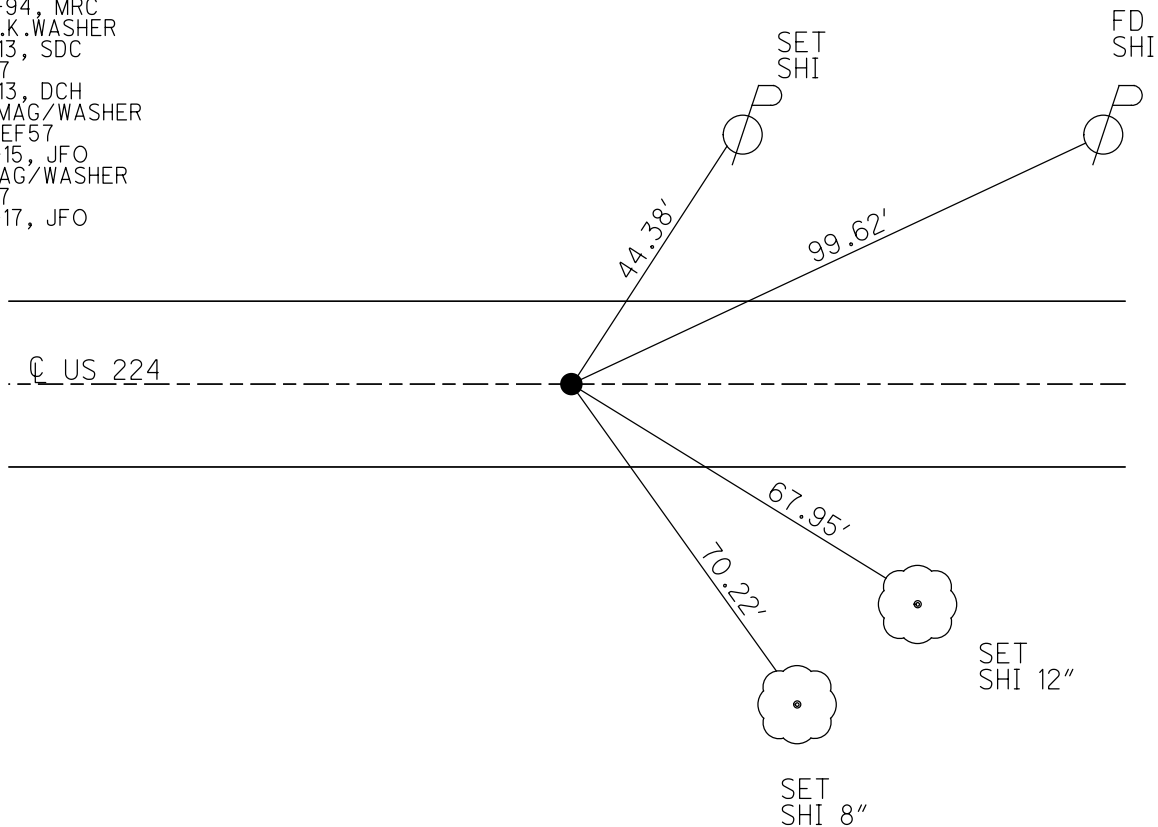
GEOID: NAVD 2012A

GRID: NORTHING: 515718.0702

EASTING: 1810355.1980



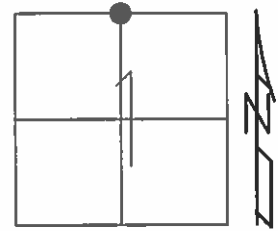
RECORD:
 P.I. STA: 1020+83.66
 $\Delta=0^{\circ}12'$ LT-REC.
 P.K.WASHER ATOP
 BOAT SPIKE ATOP
 R.R.SPIKE ATOP
 SONE. FIELD BOOK#54.
 (FROM LOFT).
 SET P.K.WASHER
 10-3-94, MRC
 FD P.K.WASHER
 1-15-13, SDC
 REF57
 1-16-13, DCH
 SET MAG/WASHER
 NEWREF57
 7-13-15, JFO
 FD MAG/WASHER
 REF57
 7-18-17, JFO



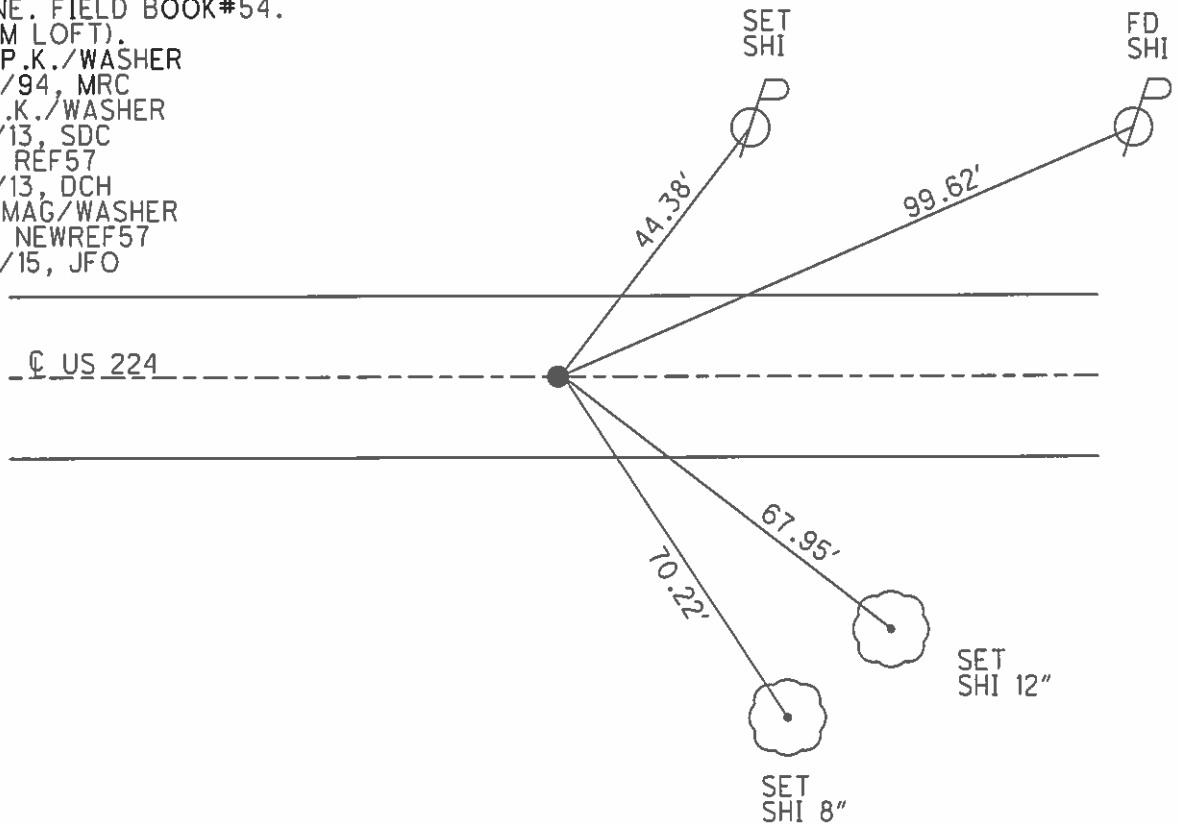
O.D.O.T. DISTRICT 2 SURVEY OFFICE (USE ONLY)

PERSONNEL	REFERENCE NO.	57	SHEET	15	OF	19
NOTES	HOMAN	DATE	9/9/14	ROUTE	SR 224	
H.C.	LEU	WEATHER	SUNNY	COUNTY	SENECA	
R.C.	HOMAN	TEMP.	75°	TOWNSHIP	EDEN	
				SECTION	1	
				T 1 N	R 15 E	

TYPE MONUMENT P.K./WASHER
 ON SURFACE - ~~BELOW~~ ON
 LEFT - ☉ PAV'T - ~~RIGHT~~ 0.5'
9.5' TO LT EDGE PAVEMENT
 S.L.M. 970+69.07
 Grid: Northing: 515709.701 Easting: 1807656.406



RECORD: P.I.
 STA: 1020+83.66
 $\Delta = 0^\circ 12' \text{ LT- REC.}$
 P.K./WASHER ATOP
 BOAT SPIKE ATOP
 R.R.SPIKE ATOP
 STONE. FIELD BOOK#54.
 (FROM LOFT).
 SET P.K./WASHER
 10/3/94, MRC
 FD P.K./WASHER
 1/15/13, SDC
 GPS, REF57
 1/16/13, DCH
 SET MAG/WASHER
 GPS, NEWREF57
 7/13/15, JFO



O.D.O.T. DISTRICT 2 SURVEY OFFICE

PERSONNEL

REFERENCE NO. 57

SHEET 11 OF 16

NOTES CHANEY

H.C. RIPPLE

R.C. BARBOUR

DATE 5-2-94

WEATHER FAIR

TEMP. +60

ROUTE S.R. 224

COUNTY SENECA

TOWNSHIP CLINTON

SECTION 36

T 2 N R 15 E

TYPE MONUMENT P.K. / WASHER

ON SURFACE - BELOW Yes

LEFT - Q PAV'T. - RIGHT 0.5' Lt

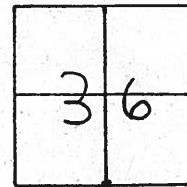
9.5' TO Lt EDGE PAVEMENT

S.L.M. 971+09

Reset

10-3-94

MRC.



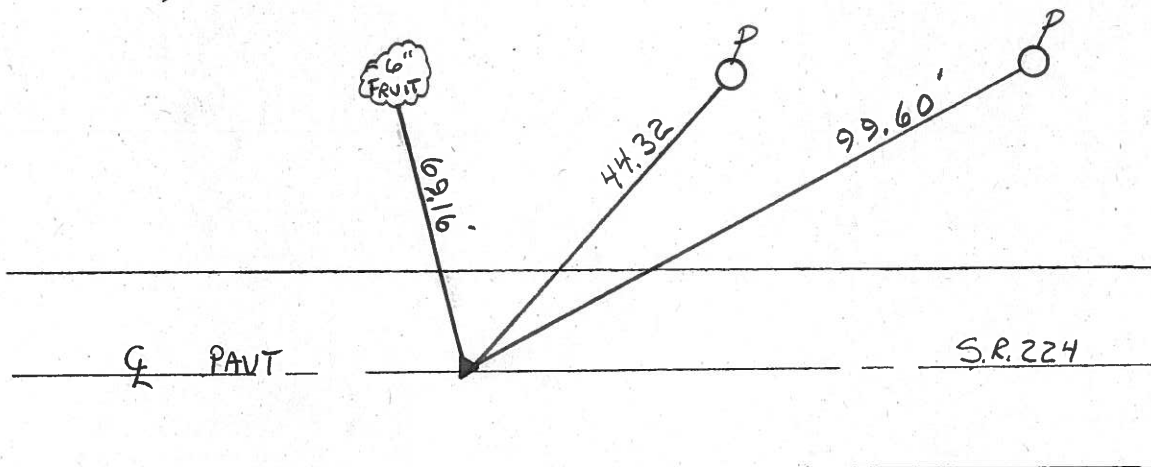
REC P.I. Sta 1020 + 23.66

REC Δ = 0°-12' Lt

P.K. ATOP BOAT SPIKE ATOP R.R SPIKE

ATOP STONE

STONE - FIELD BOOK #54 (FROM LEFT)



County Seneca S.R. # 224

Date 6/24/82

Township Clinton

Weather sunny

Section 36

Temp. 58°

T2N, R15E

Personnel Cronin

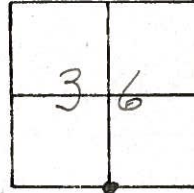
Ripple

Geyman

Mosser

Barbour

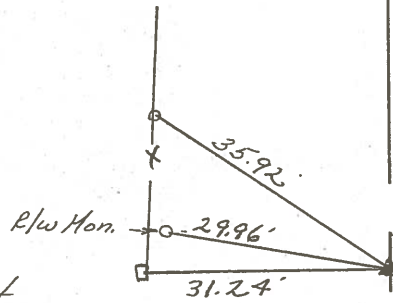
#57



P.I.
1020 + 83.66

Set P.K. & washer atop boat
spike & washer atop R.R. spike

STONE-FIELD BOOK #54 (FROM LOFT)

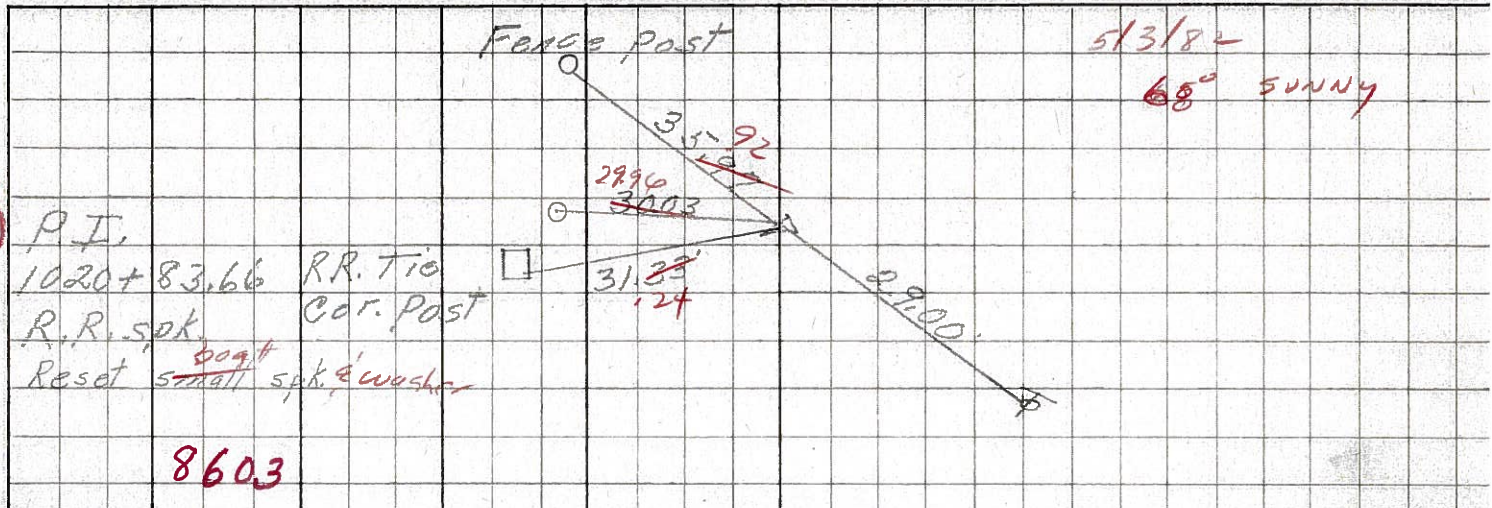


S U.S. #224

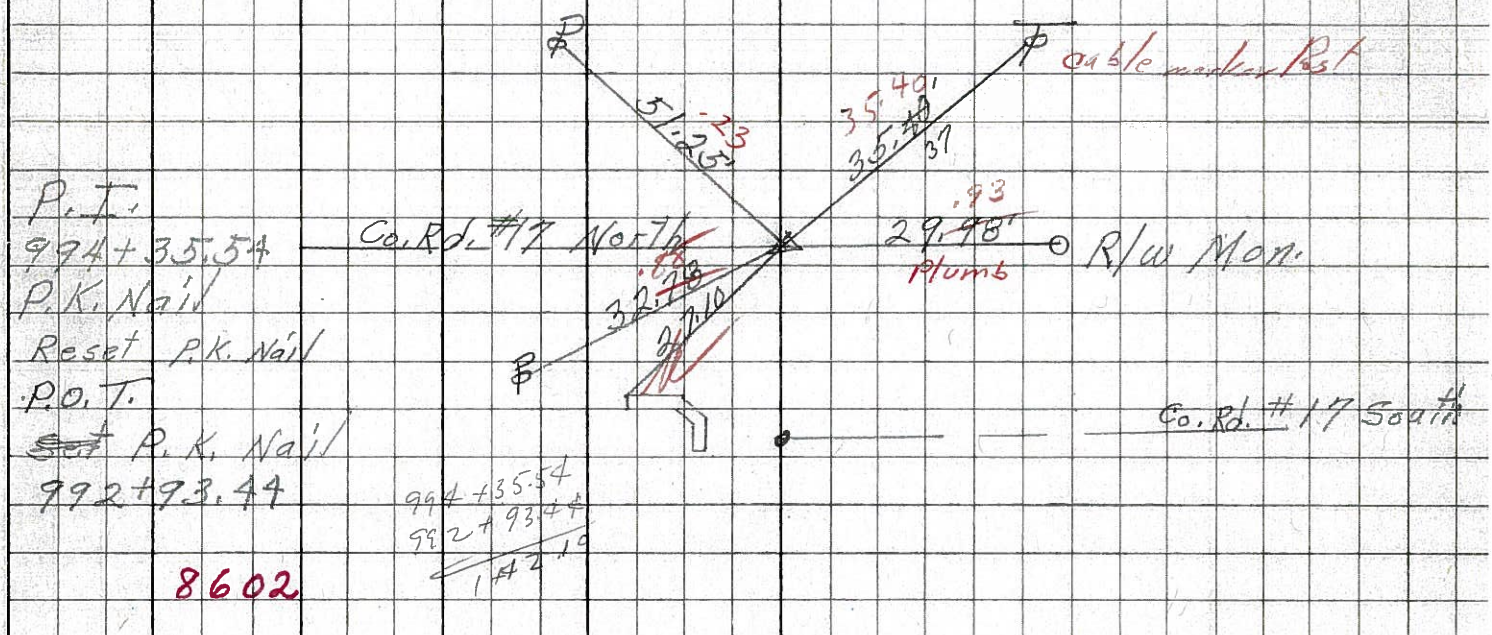
PERSONNEL	TITLE	PERSONNEL	TITLE	COUNTY	DATE	WEATHER	TEMP.
Schneider		Potts		Seneca		Fair	65°
Mosser				S. R. U.S. #224			
Barbour				SEC. S.R. #100 to Attica			
Redding							

DESCRIPTION Ties for Control Points JOB NO.

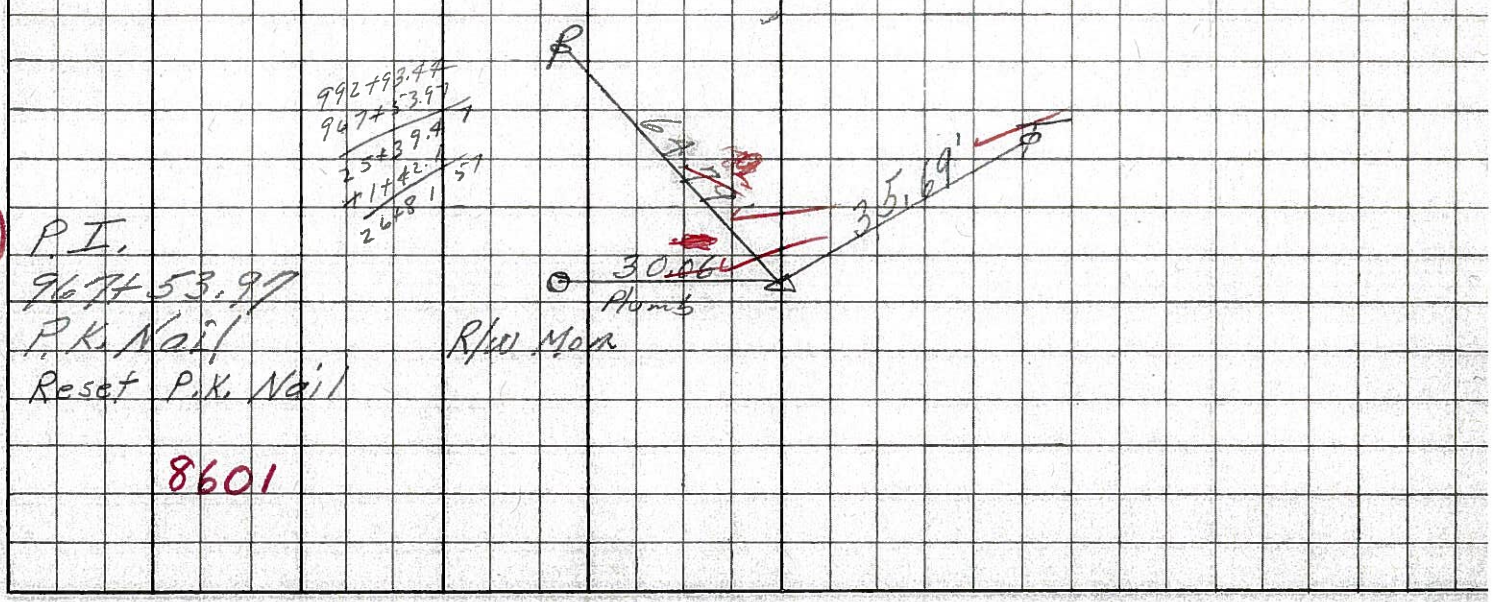
(57)



(56)

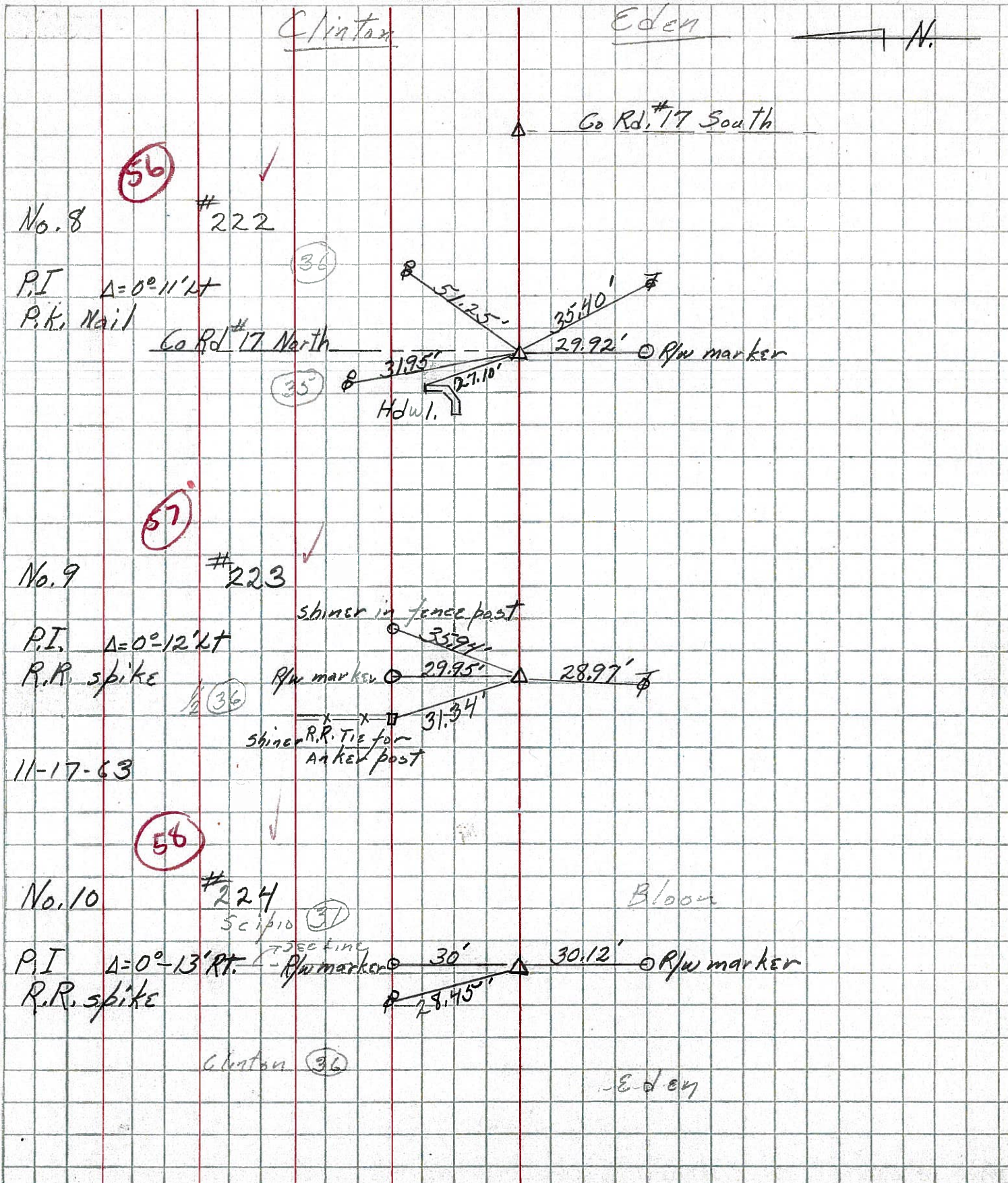


(55)



PERSONNEL	TITLE	PERSONNEL	TITLE	COUNTY	DATE
Joe Bill				Seneca	
Kowaleski				S. R. 224	WEATHER
Brooks				SEC.	TEMP.

DESCRIPTION	LEFT	CENTER LINE	RIGHT	JOB NO.
-------------	------	-------------	-------	---------



PERSONNEL TITLE PERSONNEL TITLE

COUNTY Seneca

DATE 11-24-53

S. R. #224

WEATHER

SEC. A

TEMP.

DESCRIPTION S.H. 272

LEFT

CENTER LINE

RIGHT

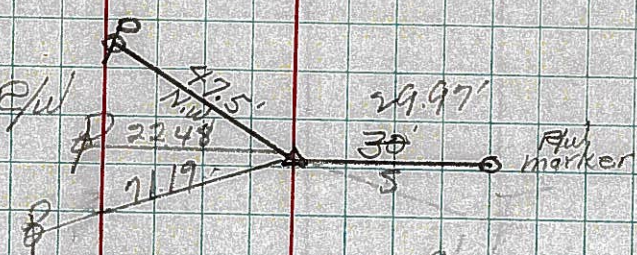
JOB NO.

54

R.R. Spike on $\frac{1}{2}$ of R/W

#220

No. 6



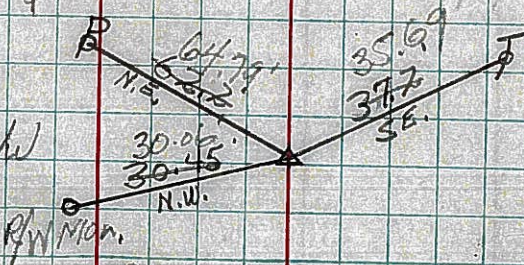
OK 4-29-60

55

R.R. Spike on $\frac{1}{2}$ of R/W

#221

No. 7



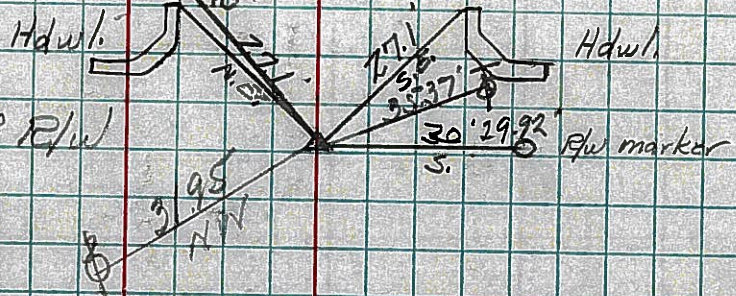
OK 4-29-60

56

R.R. Spike on $\frac{1}{2}$ of R/W

#222

No. 8



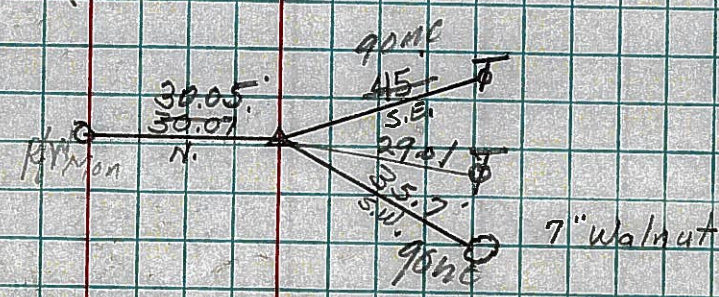
OK 4-29-60

57

R.R. Spike on $\frac{1}{2}$ of R/W

#223

No. 9



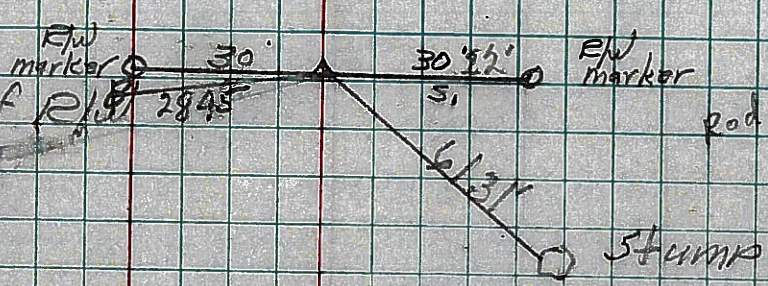
OK 4-29-60

58

R.R. Spike on $\frac{1}{2}$ of R/W

#224

No. 10



OK 4-27-60