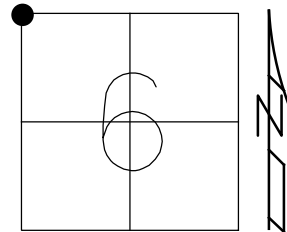


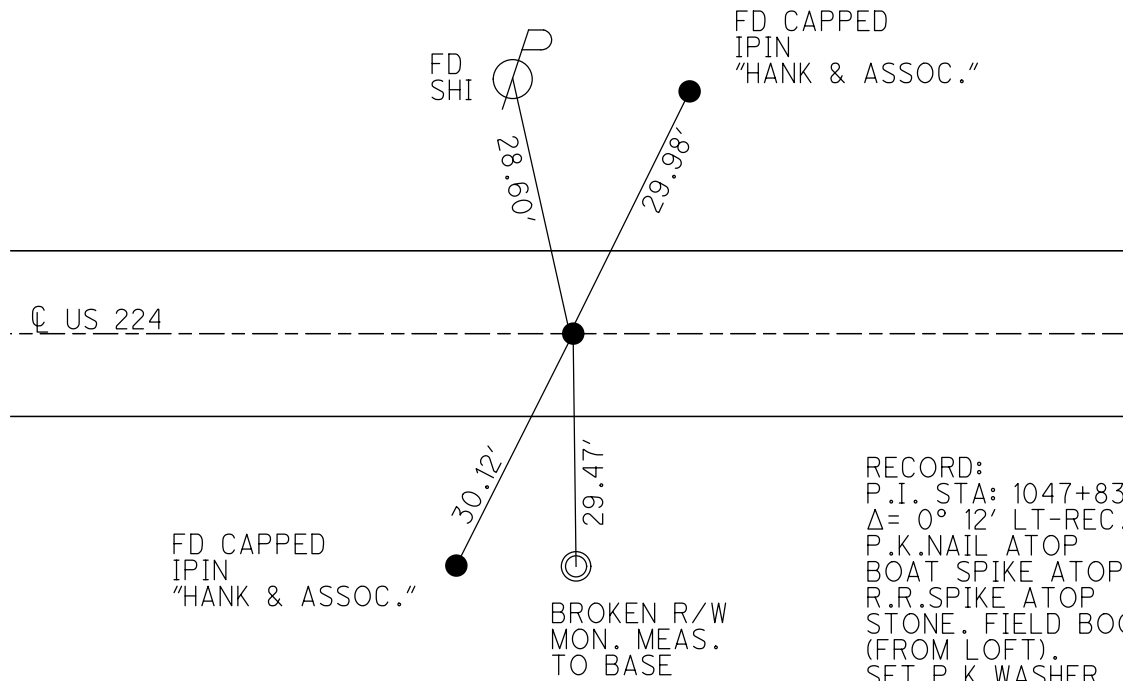
O.D.O.T. DISTRICT 2 SURVEY OFFICE (USE ONLY)

PERSONNEL _____ REFERENCE NO. 58 SHEET 16 OF 19
 NOTES HOMAN DATE 9/9/14 ROUTE SR 224
 H.C. LEU WEATHER SUNNY COUNTY SENECA
 R.C. HOMAN TEMP. 75° TOWNSHIP BLOOM
 DWG BY TRENKA PID 94957 SECTION 6
 T 1 N R 16 E

TYPE MONUMENT MAG/WASHER
 ON SURFACE - ~~BELOW~~ ON _____
 OFFSET \odot PAVEMENT 1.0' LT : ~~RT~~
9.0' TO LT EDGE PAVEMENT
 STATION: 997+68.14



HORZ.DATUM: NAD 2011 GEOID: NAVD 2012A
 GRID: NORTHING: 515709.6844 EASTING: 1807656.3999

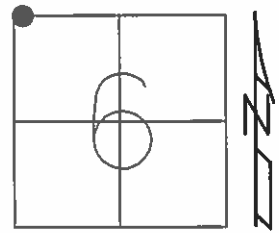


RECORD:
 P.I. STA: 1047+83
 $\Delta = 0^\circ 12'$ LT-REC.
 P.K.NAIL ATOP
 BOAT SPIKE ATOP
 R.R.SPIKE ATOP
 STONE. FIELD BOOK#54.
 (FROM LOFT).
 SET P.K.WASHER
 10/3/94, MRC
 FD P.K.WASHER
 9/7/11, RJL
 1/15/13, SDC
 REF58
 1/16/13, DCH
 SET MAG/WASHER
 NEWREF58
 7/13/15, JFO
 FD MAG/WASHER
 REF58
 7-18-17, JFO

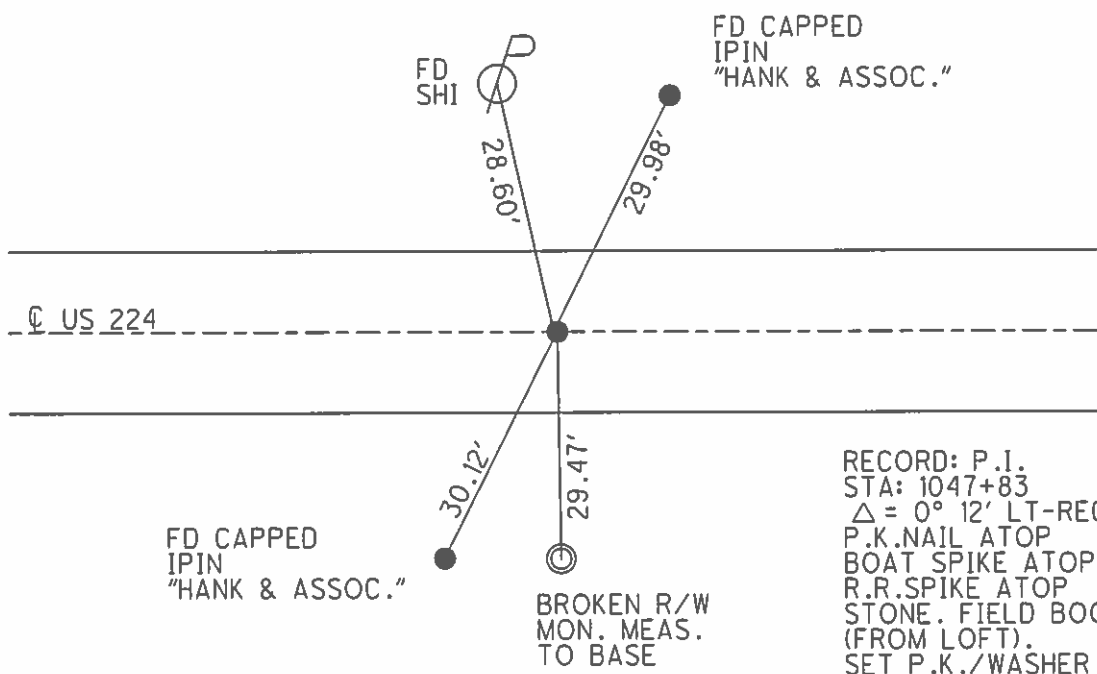
O.D.O.T. DISTRICT 2 SURVEY OFFICE (USE ONLY)

PERSONNEL	REFERENCE NO.	58	SHEET	16	OF	19
NOTES	HOMAN	DATE	9/9/14	ROUTE	SR 224	
H.C.	LEU	WEATHER	SUNNY	COUNTY	SENECA	
R.C.	HOMAN	TEMP.	80°	TOWNSHIP	BLOOM	
				SECTION	6	
				T	1	N
				R	16	E

TYPE MONUMENT MAG NAIL
 ON SURFACE - ~~BELOW~~ ON
 LEFT - ☉ PAV'T - ~~RIGHT~~ 1.0'
9.0' TO LT EDGE PAVEMENT
 S.L.M. 997+68.14



Grid: Northing: 515718.074 Easting: 1810355.189



FD CAPPED
IPIN
"HANK & ASSOC."

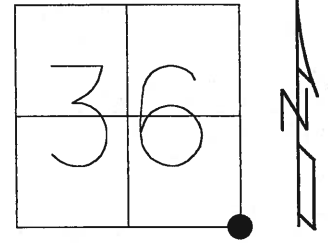
FD CAPPED
IPIN
"HANK & ASSOC."

RECORD: P.I.
 STA: 1047+83
 $\Delta = 0^\circ 12' \text{ LT-REC.}$
 P.K.NAIL ATOP
 BOAT SPIKE ATOP
 R.R.SPIKE ATOP
 STONE. FIELD BOOK#54.
 (FROM LOFT).
 SET P.K./WASHER
 10/3/94, MRC
 FD P.K./WASHER
 9/7/11, RJL
 1/15/13, SDC
 GPS, REF58
 1/16/13, DCH
 SET MAG/WASHER
 GPS, NEWREF58
 7/13/15, JFO

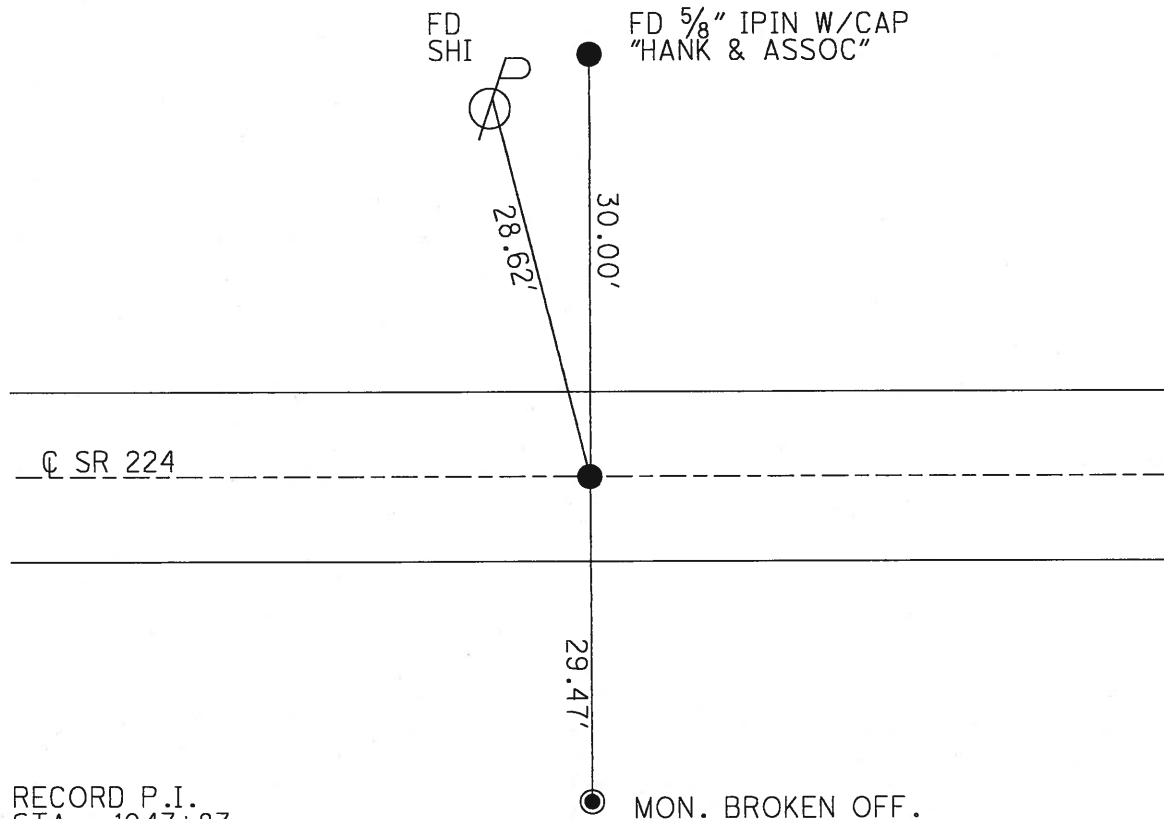
O.D.O.T. DISTRICT 2 SURVEY OFFICE

PERSONNEL _____ REFERENCE NO. 58 SHEET 12 OF 16
 NOTES LUMBREZER DATE 9/7/11 ROUTE SR 224
 H.C. LUMBREZER WEATHER SUNNY COUNTY SENECA
 R.C. HARBAUGH TEMP. 80° TOWNSHIP CLINTON
 _____ SECTION 36
 _____ T 2 N R 15 E

TYPE MONUMENT P.K./WASHER
 ON SURFACE - ~~BELOW~~ ON _____
 LEFT - ☉ PAV'T - ~~RIGHT~~ 1.0'
9' TO LT EDGE PAVEMENT
 S.L.M. 998+15
 Grid: Northing: 515718.100 Easting: 1810355.371



RESET P.K./WASHER
 10/3/94, MRC



RECORD P.I.
 STA. = 1047+83
 REC. = $\frac{9}{12}$ " LT
 PK ATOP PK ATOP BOAT SPIKE
 ATOP R.R. SPIKE ATOP STONE.
 STONE IS FIELD BOOK
 #54 (FROM LOFT)

O.D.O.T. DISTRICT 2 SURVEY OFFICE

PERSONNEL _____

REFERENCE NO. 58

SHEET 12 OF 16

NOTES CHANEY

H.C. RIPPLE

R.C. BARBOUR

DATE 5-2-94

WEATHER FAIR

TEMP. 60

ROUTE S.R. 224

COUNTY SENECA

TOWNSHIP CLINTON

SECTION 36

T. 2 N. R. 15 E.

TYPE MONUMENT P.K. / WASHER

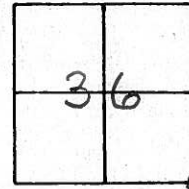
ON SURFACE - ~~BELOW~~ Yes

LEFT - ~~PAV'T.~~ RIGHT 1.0' Lt

S.O TO Lt EDGE PAVEMENT

S.L.M. 99B+15

Reset
10-3-94
MRC.



RECORD P.I.

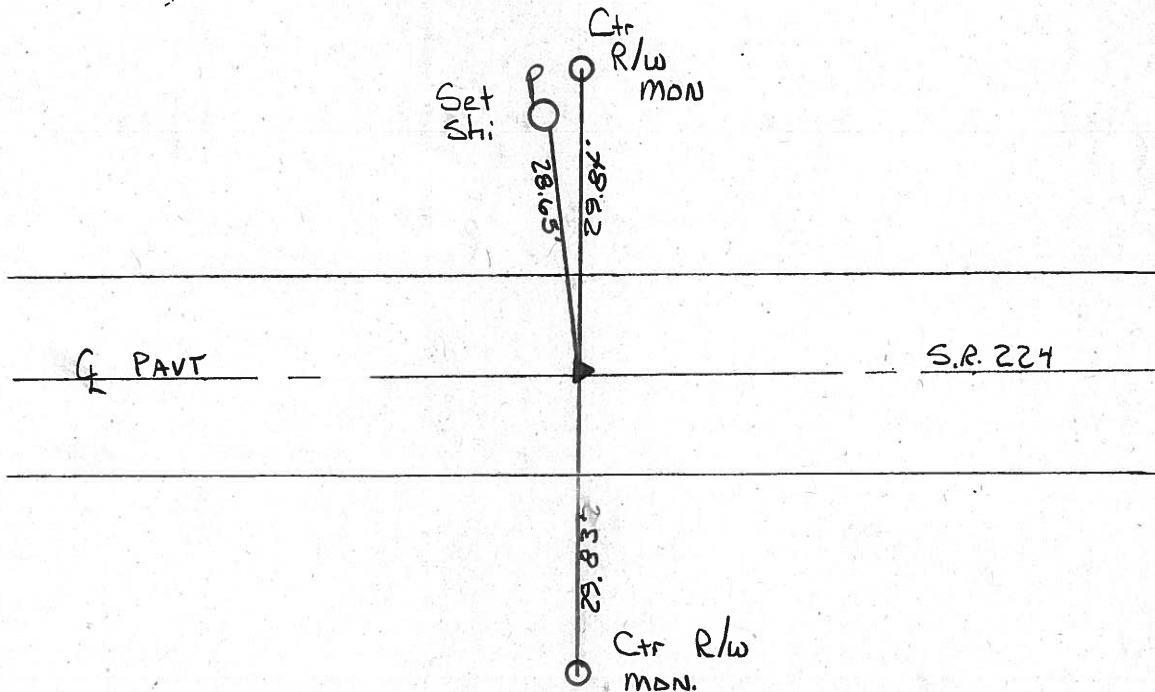
Sta 1047+83

Rec Δ = 0'-12' Lt

P.K. ATOP P.K. ATOP BOAT SPIKE

ATOP R.R. SPIKE ATOP STONE

STONE - FIELD BOOK #54 (FROM LEFT)



County Seneca S.R. #224

Date 6/24/82

Township Clinton

Weather sunny

Section 36

Temp. 60°

T2N, R15E

Personnel Cronin

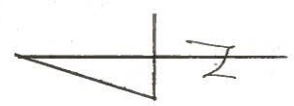
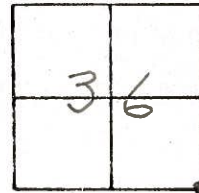
Ripple

Geyman

Mosser

Barbour

#58

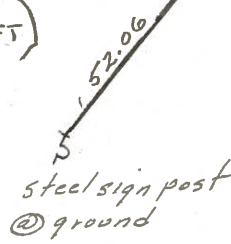


P.I.
1047+83

Set P.K. & washer at top post

spike & washer at top R.R. spike

STONE - FIELD BOOK #54 (FROM LEFT)



R.V.S. #224

PERSONNEL TITLE PERSONNEL TITLE

Schneider Potts

COUNTY Seneca DATE 7-30-68

Mosser

S. R. U.S. #224 to Attica WEATHER Cloudy

Barbour

SEC. S.R. #100 to Attica TEMP. Rain

Reidling

DESCRIPTION Ties for Control Points JOB NO.

LEFT CENTER LINE RIGHT

1/5/3/82 sunny 70°

60

P.I. 1076+37.09 R/W Mon. Iron Pin Reset small spk. 29.98' 30.21' 36.70'

8606

S.E. Bot. Conc-walk

59

P.O.T. 1074+23.29 R.R. spk. 3" down Reset small spk. 36" Maple 31.40' 31.07' 20" Ash 1/2 Sec. Line 67.3'

8605

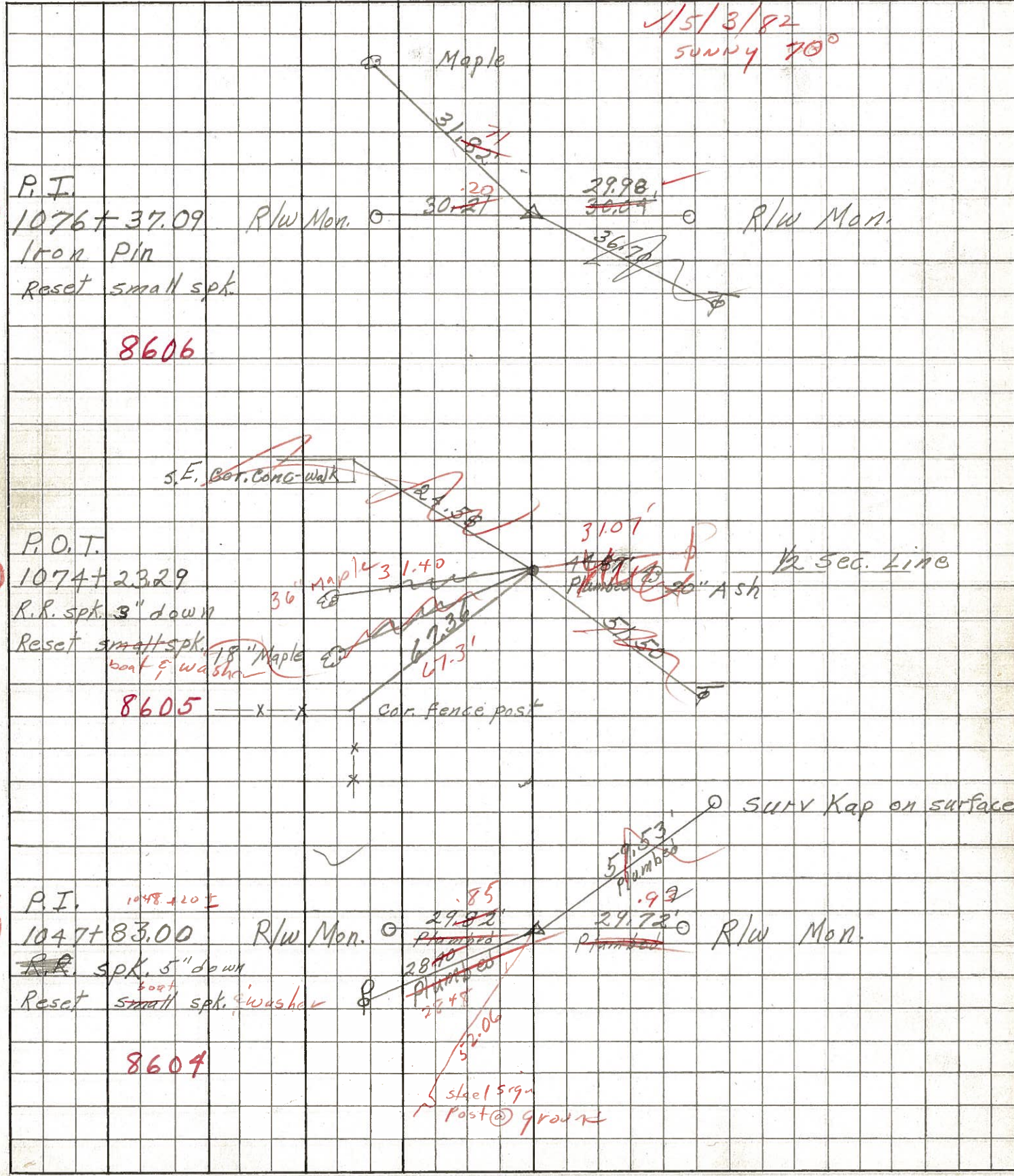
Cor. fence post

58

P.I. 1047+83.00 R/W Mon. R.R. spk. 5" down Reset small spk. washer 29.82' 28.40' 29.72' 52.06'

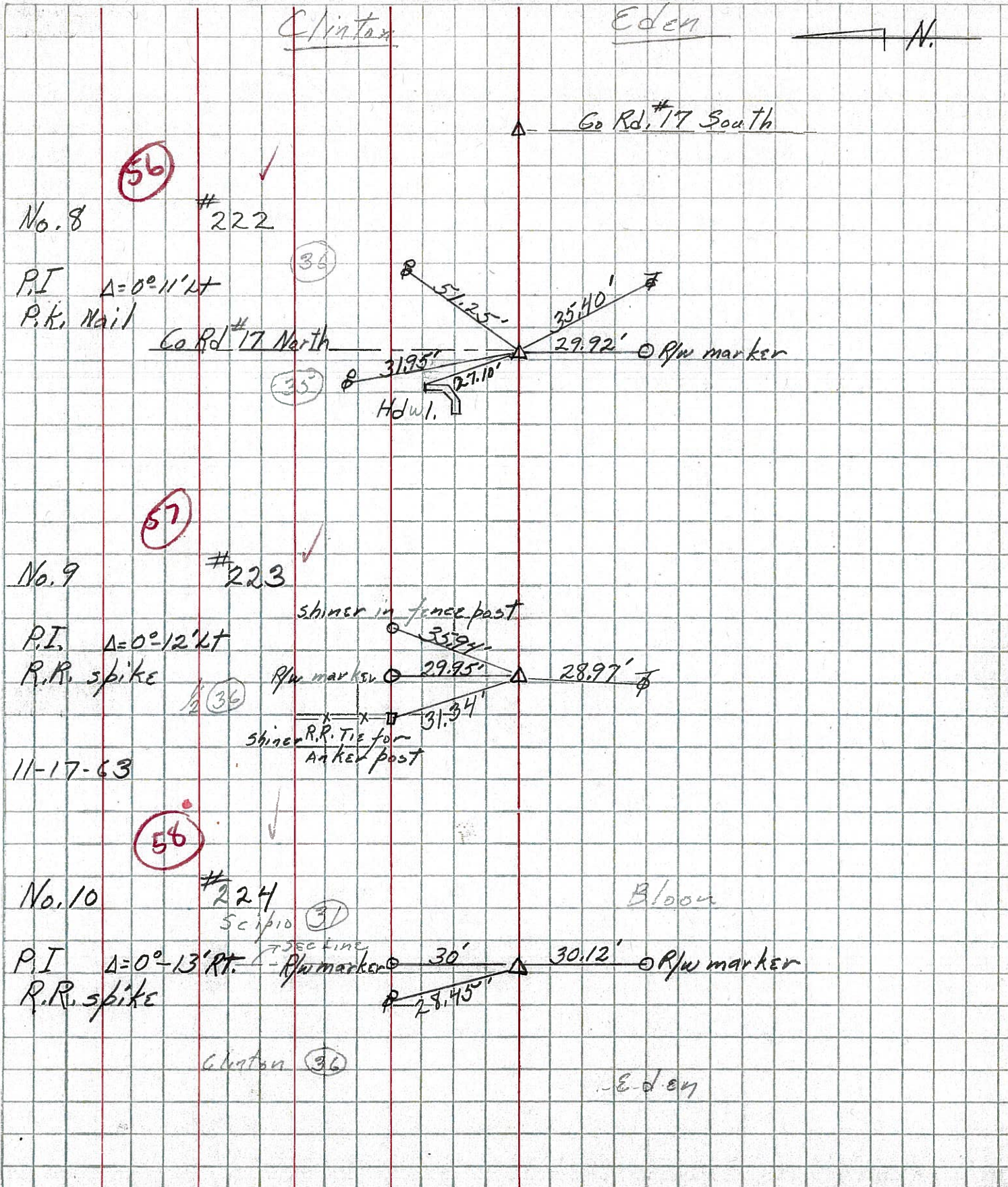
8604

steel sign Post @ ground



PERSONNEL	TITLE	PERSONNEL	TITLE	COUNTY	DATE
FRABILL				Seneca	
Kowaleski				S. R. 224	WEATHER
Brooks				SEC.	TEMP.

DESCRIPTION	LEFT	CENTER LINE	RIGHT	JOB NO.
-------------	------	-------------	-------	---------



PERSONNEL TITLE PERSONNEL TITLE

COUNTY Seneca DATE 11-24-53

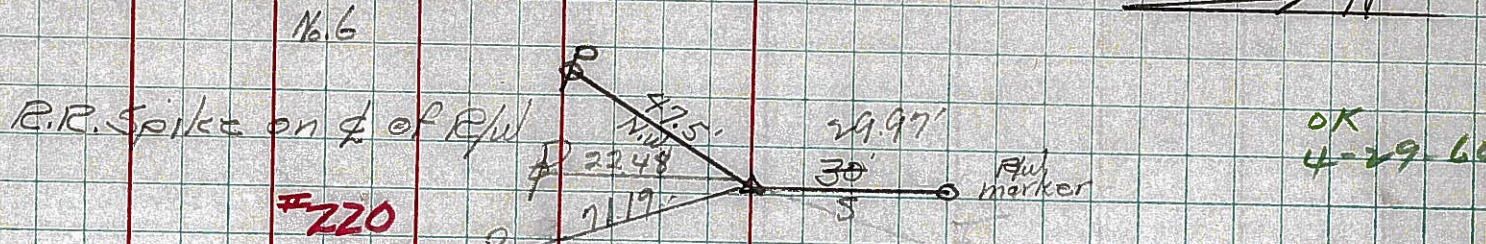
S. R. 224 WEATHER

SEC. A TEMP.

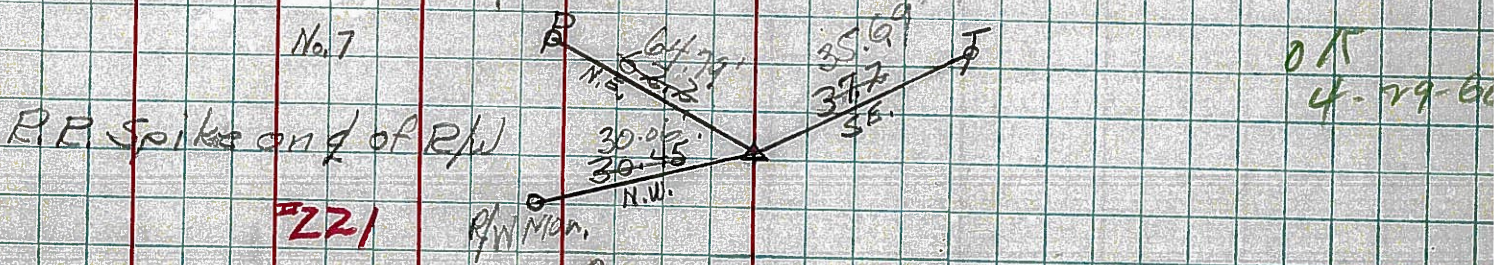
DESCRIPTION S.H. 272

LEFT CENTER LINE RIGHT JOB NO.

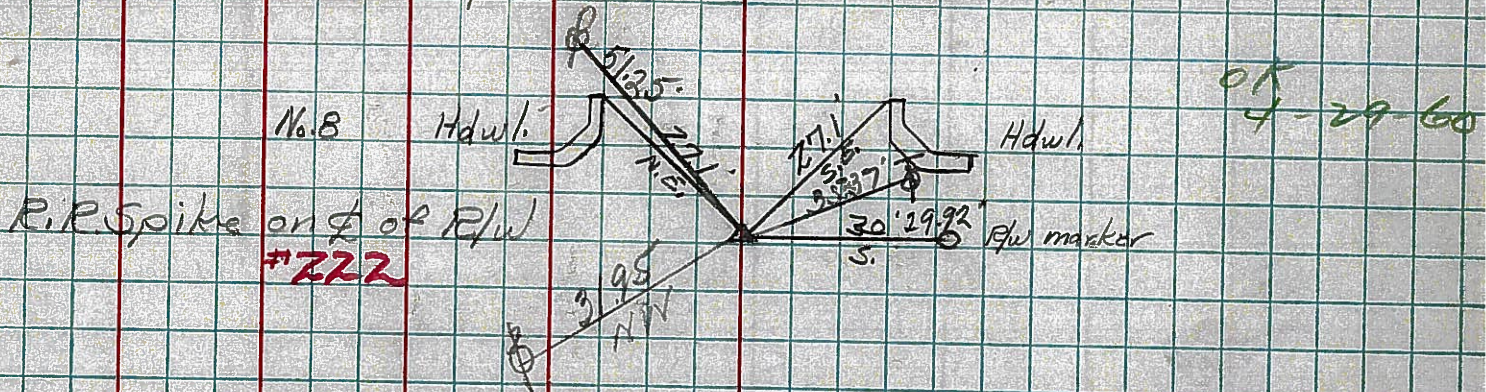
54



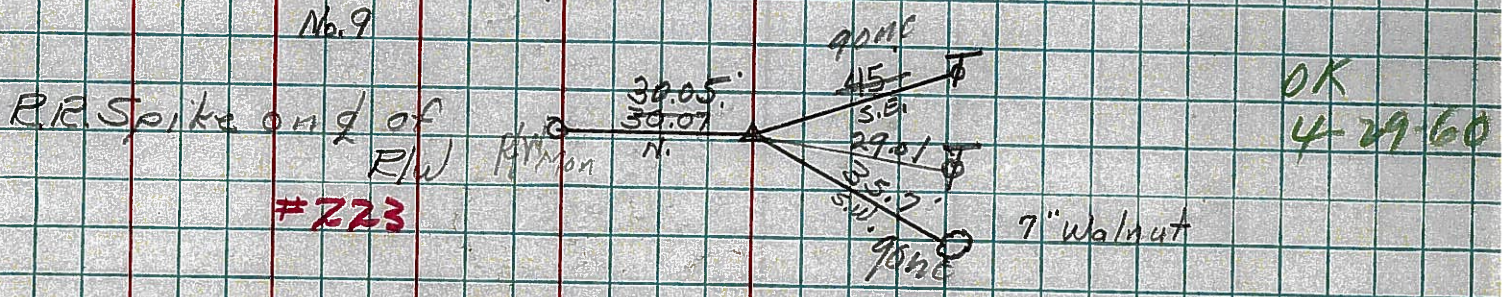
55



56



57



58

