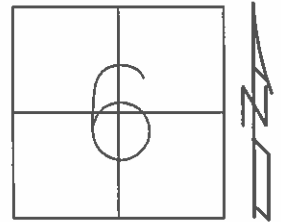


O.D.O.T. DISTRICT 2 SURVEY OFFICE (USE ONLY)

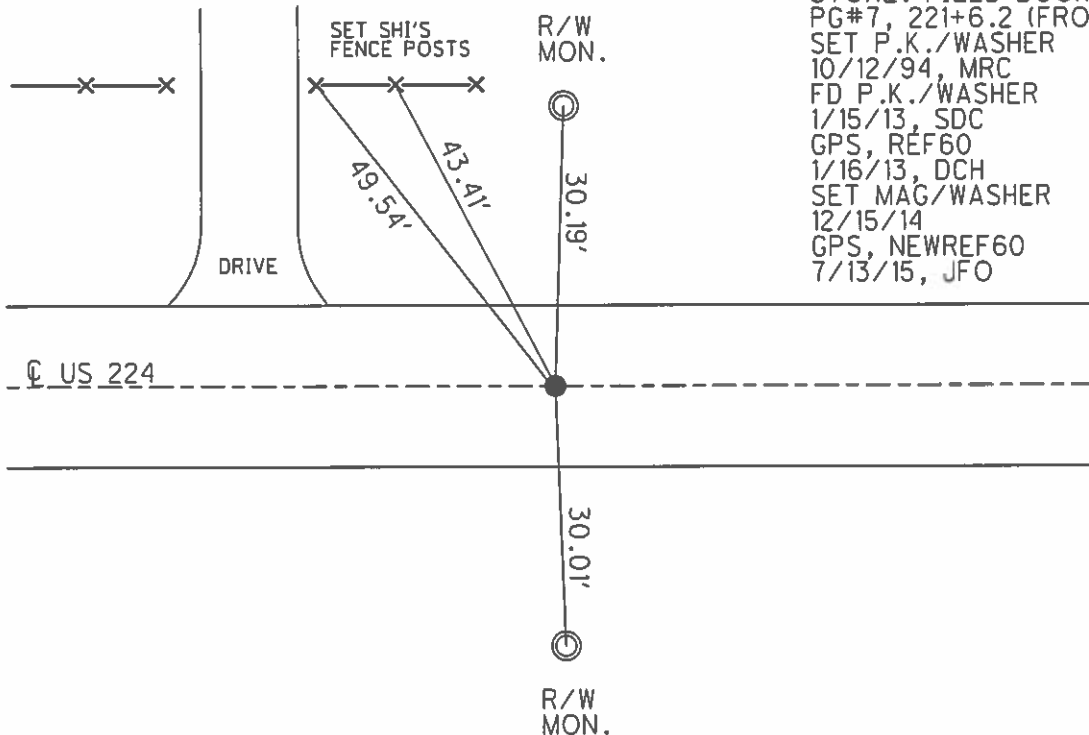
PERSONNEL _____ REFERENCE NO. 60 SHEET 18 OF 19
 NOTES HOMAN DATE 9/8/14 ROUTE SR 224
 H.C. LEU WEATHER FAIR COUNTY SENECA
 R.C. HOMAN TEMP. 75° TOWNSHIP BLOOM
 SECTION 6
 T 1 N R 16 E

TYPE MONUMENT P.K.NAIL
 ON SURFACE - ~~BELOW~~ ON _____
 LEFT - ☉ PAV'T - ~~RIGHT~~ 1.0'
9.0' TO LT EDGE PAVEMENT
 S.L.M. 1026+22.07



Grid: Northing: 515722.148 Easting: 1813209.310

RECORD: P.I.
 STA: 1076+37.09
 $\Delta = 0^\circ 13'$ RT-REC.
 P.K.NAIL ATOP
 BOAT SPIKE ATOP
 IPIN ATOP
 STONE. FIELD BOOK #54.
 PG#7, 221+6.2 (FROM LOFT)
 SET P.K./WASHER
 10/12/94, MRC
 FD P.K./WASHER
 1/15/13, SDC
 GPS, REF60
 1/16/13, DCH
 SET MAG/WASHER
 12/15/14
 GPS, NEWREF60
 7/13/15, JFO



O.D.O.T. DISTRICT 2 SURVEY OFFICE

PERSONNEL _____

REFERENCE NO. 60 SHEET 14 OF 16

NOTES CHANEY

H.C. RIPPLE

R.C. BARBOUR

DATE 5-2-94

WEATHER FAIR

TEMP. +62

ROUTE S.R. 224

COUNTY SENECA

TOWNSHIP Scipio

SECTION 31

T. 2 N. R. 16 E

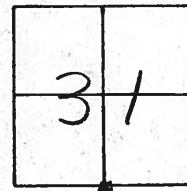
TYPE MONUMENT P.K. / WASHER Reset

ON SURFACE - BELOW Yes 10-12-94

LEFT - Q PAV'T. - RIGHT 1.0 Lt M.R.C.

S.O TO Lt EDGE PAVEMENT

S.L.M. 1026+76



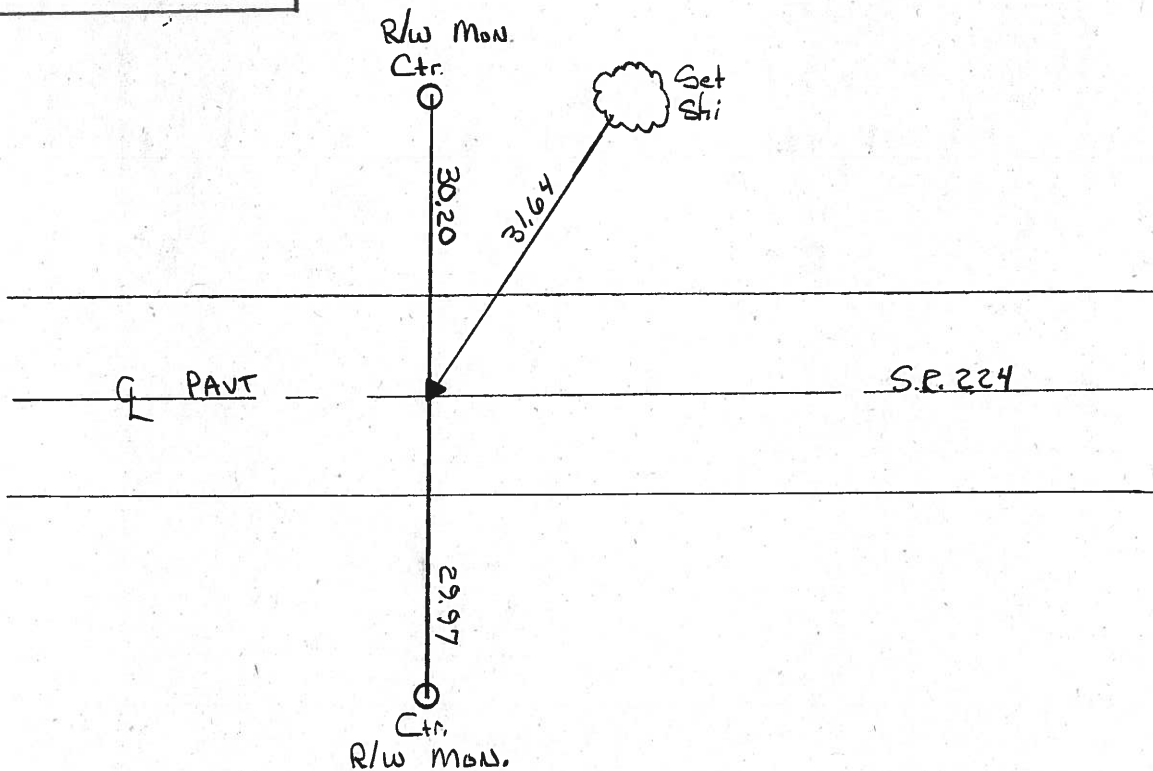
REC P.I. Sta 1076+37.09

Rec Δ = 0°-13' Rt

P.K atop BOAT SPIKE atop IRON PIN

atop STONE

FIELD Book 54 Pg 7
Sta 221+62



County Seneca S.R. # 224

Date 6/24/82

Township Scipio

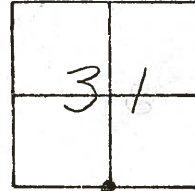
Weather sunny

Section 31

Temp. 66°

T2N, R16E

Personnel Cronin



#60

Ripple

Geyman

Mosser

Barbour



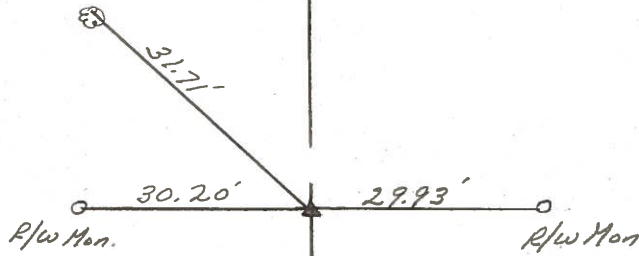
P.I. _____

1076+37.09

set P.K. & washer atop boat

spike atop iron pin

STONE - FIELD BOOK #54 (FROM LOFT)



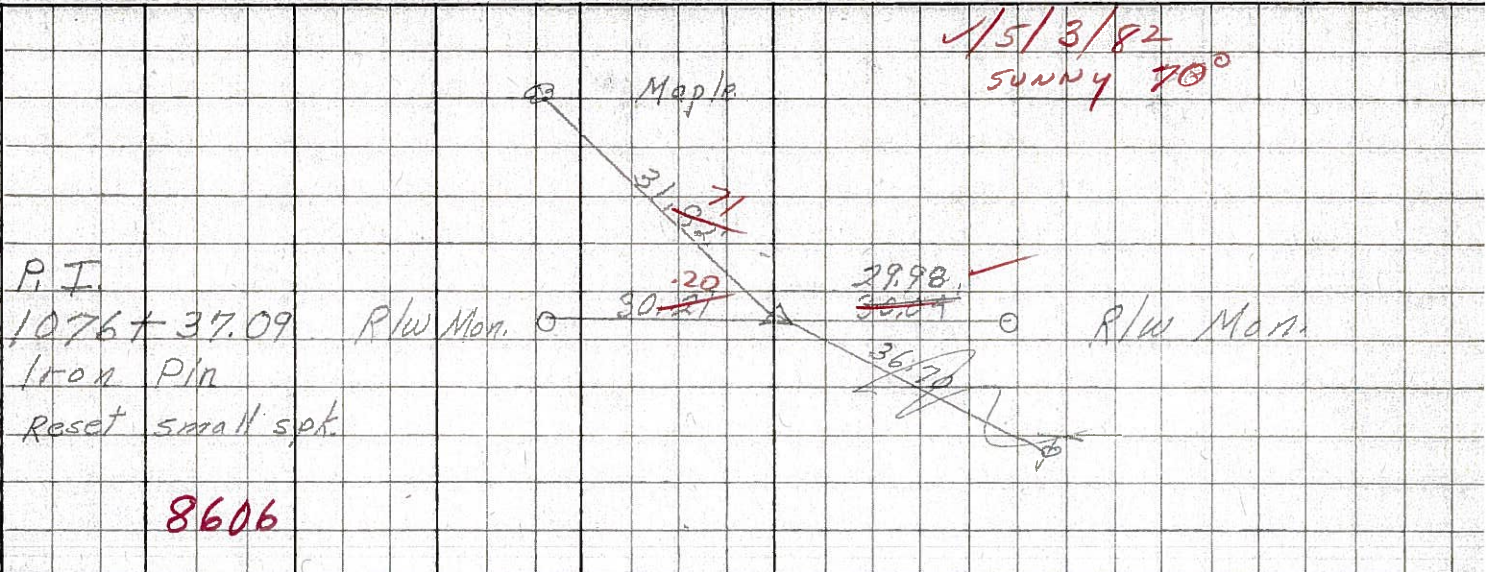
U.S. #224

PERSONNEL TITLE PERSONNEL TITLE
 Schneider _____ Potts _____
 Mosser _____
 Barbour _____
 Reidding _____

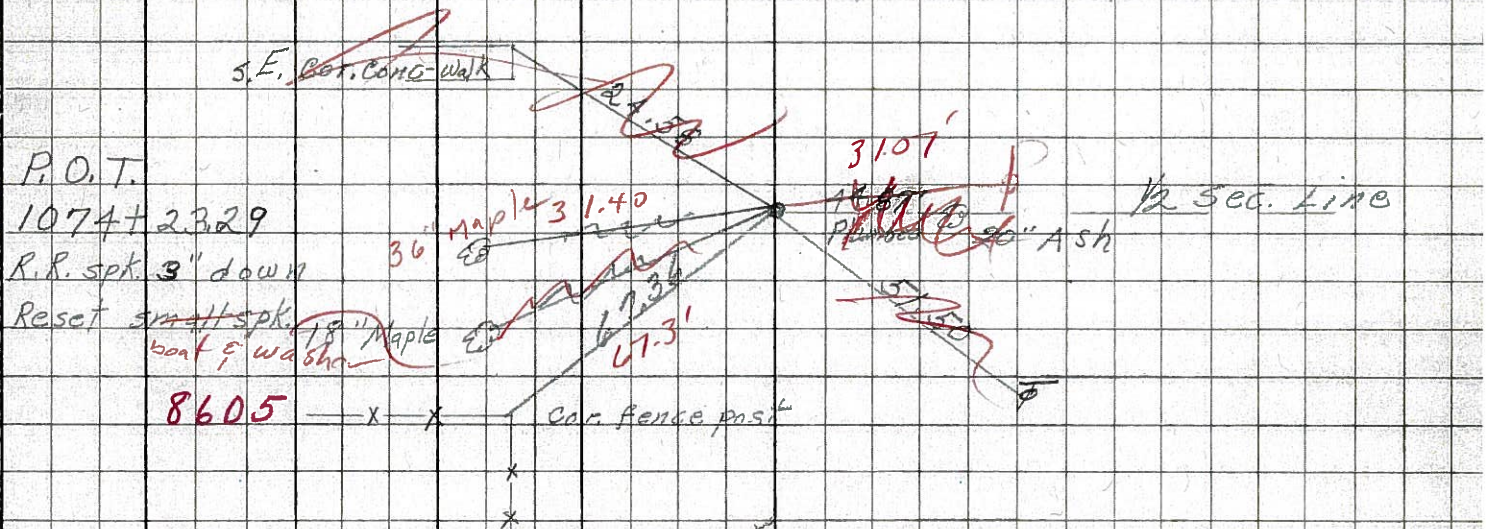
COUNTY Seneca DATE 7-30-68
 S. R. U.S. #224 to Attica WEATHER Cloudy
 SEC. S.R. #100 to Attica TEMP. Rain

DESCRIPTION Ties for Control Points LEFT CENTER LINE RIGHT JOB NO.

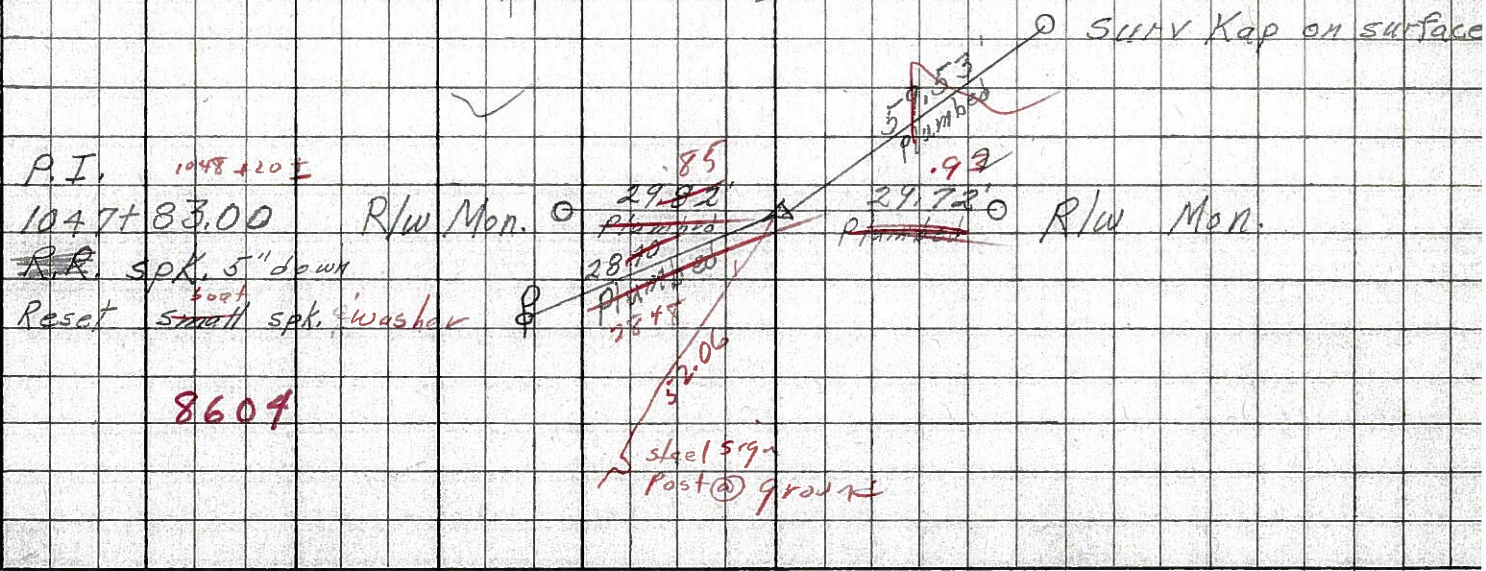
60



59



58



PERSONNEL	TITLE	PERSONNEL	TITLE	COUNTY	DATE
KrabiLL				Seneca	
Kowaleski				S. R. 224	WEATHER
Brooks				SEC.	TEMP.

DESCRIPTION	LEFT	CENTER LINE	RIGHT	JOB NO.
-------------	------	-------------	-------	---------

