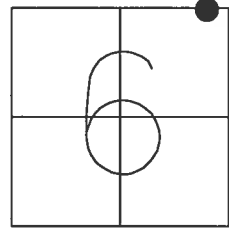


O.D.O.T. DISTRICT 2 SURVEY OFFICE

PERSONNEL _____ REFERENCE NO. 62 SHEET 1 OF 35

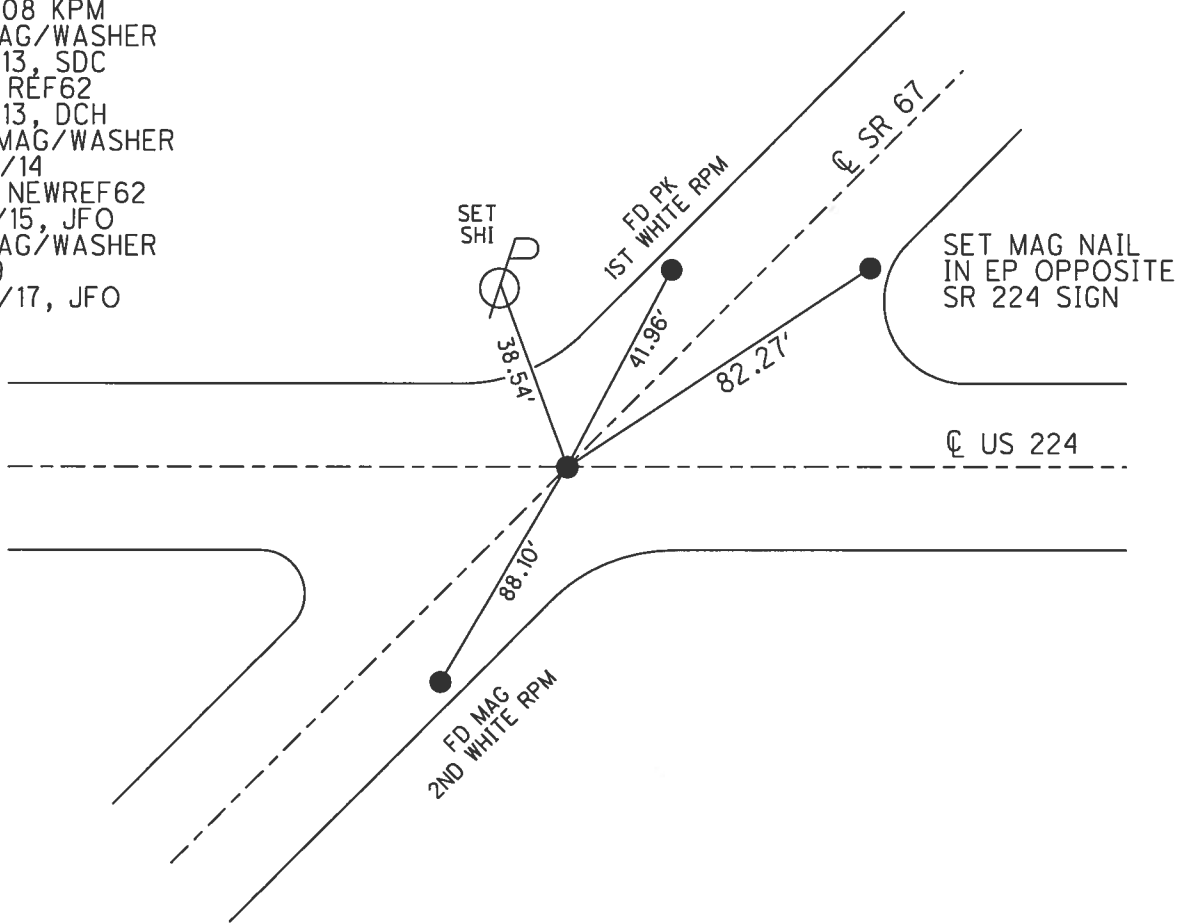
NOTES HOMAN DATE 9/8/14 ROUTE US 224
 H.C. LEU WEATHER FAIR COUNTY SENECA
 R.C. HOMAN TEMP. 75° TOWNSHIP BLOOM
 _____ SECTION 6
 _____ T 1 N R 16 E

TYPE MONUMENT MAG/WASHER
 ON SURFACE - ~~BELOW~~ ON
 LEFT - ☉ PAV'T - RIGHT ON
 _____ TO _____ EDGE PAVEMENT
 S.L.M. 1047+29.04
 GRID: NORTHING: 515722.022 EASTING: 1815316.312



RECORD:
 SET P.K./WASHER
 10/12/94 MRC
 FD P.K./WASHER
 1/12/08 KPM
 FD MAG/WASHER
 1/15/13, SDC
 GPS, REF62
 1/16/13, DCH
 SET MAG/WASHER
 12/15/14
 GPS, NEWREF62
 7/13/15, JFO
 FD MAG/WASHER
 REF19
 2/22/17, JFO

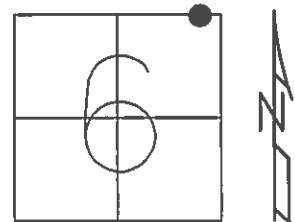
NOTE:
 REF 19 SR 67



O.D.O.T. DISTRICT 2 SURVEY OFFICE

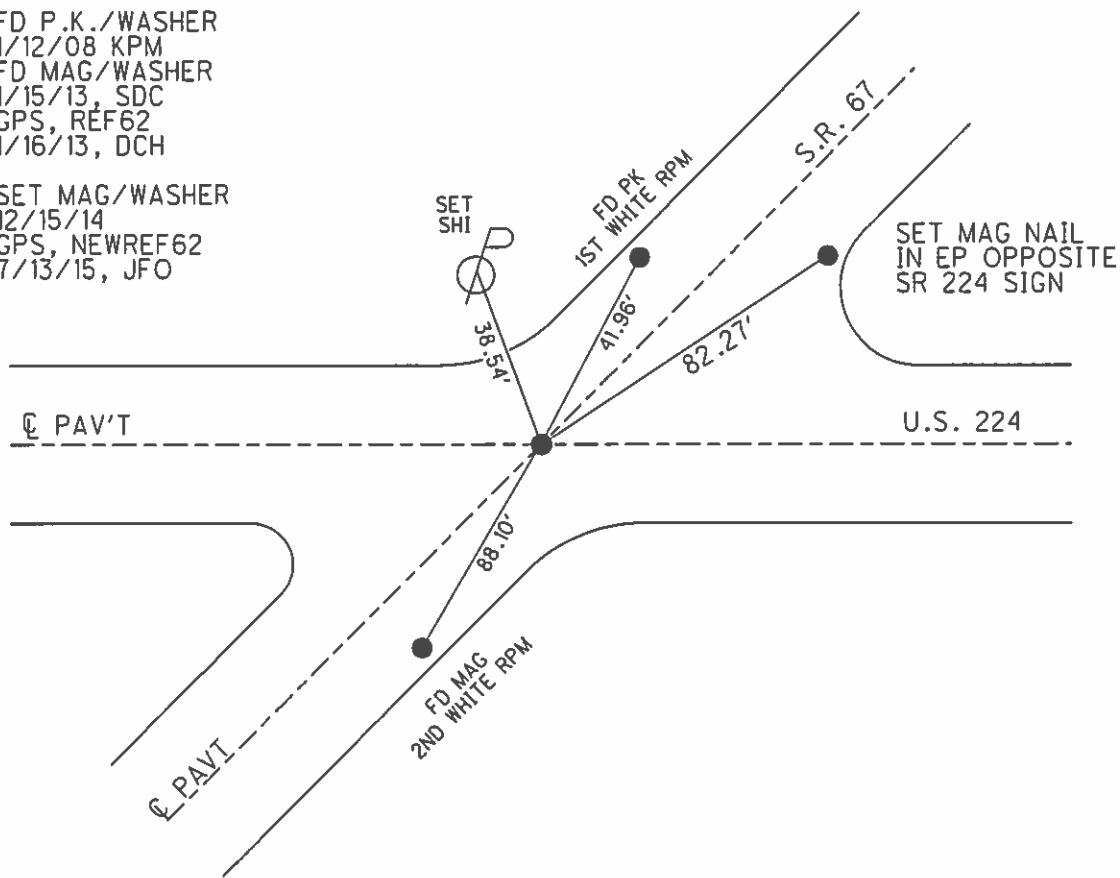
PERSONNEL	REFERENCE NO.	<u>62</u>	SHEET	<u>1</u>	OF	<u>35</u>
NOTES	HOMAN	DATE	<u>9/8/14</u>	ROUTE	<u>US 224</u>	
H.C.	<u>LEU</u>	WEATHER	<u>FAIR</u>	COUNTY	<u>SENECA</u>	
R.C.	<u>HOMAN</u>	TEMP.	<u>75°</u>	TOWNSHIP	<u>BLOOM</u>	
				SECTION	<u>6</u>	
				T	<u>1</u>	R
					<u>16</u>	<u>E</u>

TYPE MONUMENT MAG/WASHER
 ON SURFACE - ~~BELOW~~ ON
 LEFT - Q PAV'T - RIGHT ON
TO EDGE PAVEMENT
 S.L.M. 1047+29.04



GRID: NORTHING: 515722.039 EASTING: 1815316.305

- SET P.K./WASHER
10/12/94 MRC
- FD P.K./WASHER
1/12/08 KPM
- FD MAG/WASHER
1/15/13, SDC
- GPS, REF62
1/16/13, DCH
- SET MAG/WASHER
12/15/14
- GPS, NEWREF62
7/13/15, JFO



O.D.O.T. DISTRICT 2 SURVEY OFFICE

PERSONNEL _____

REFERENCE NO. 62

SHEET 16 OF 16

NOTES CHANEY

H.C. RIPPLE

R.C. BARBOUR

DATE 5-2-94

WEATHER FAIR

TEMP. 62

ROUTE S.R. 224

COUNTY SENECA

TOWNSHIP Bloom

SECTION 6

T. L. N. R. 16 E

Set P.K. / WASHER
10-12-94
MRC

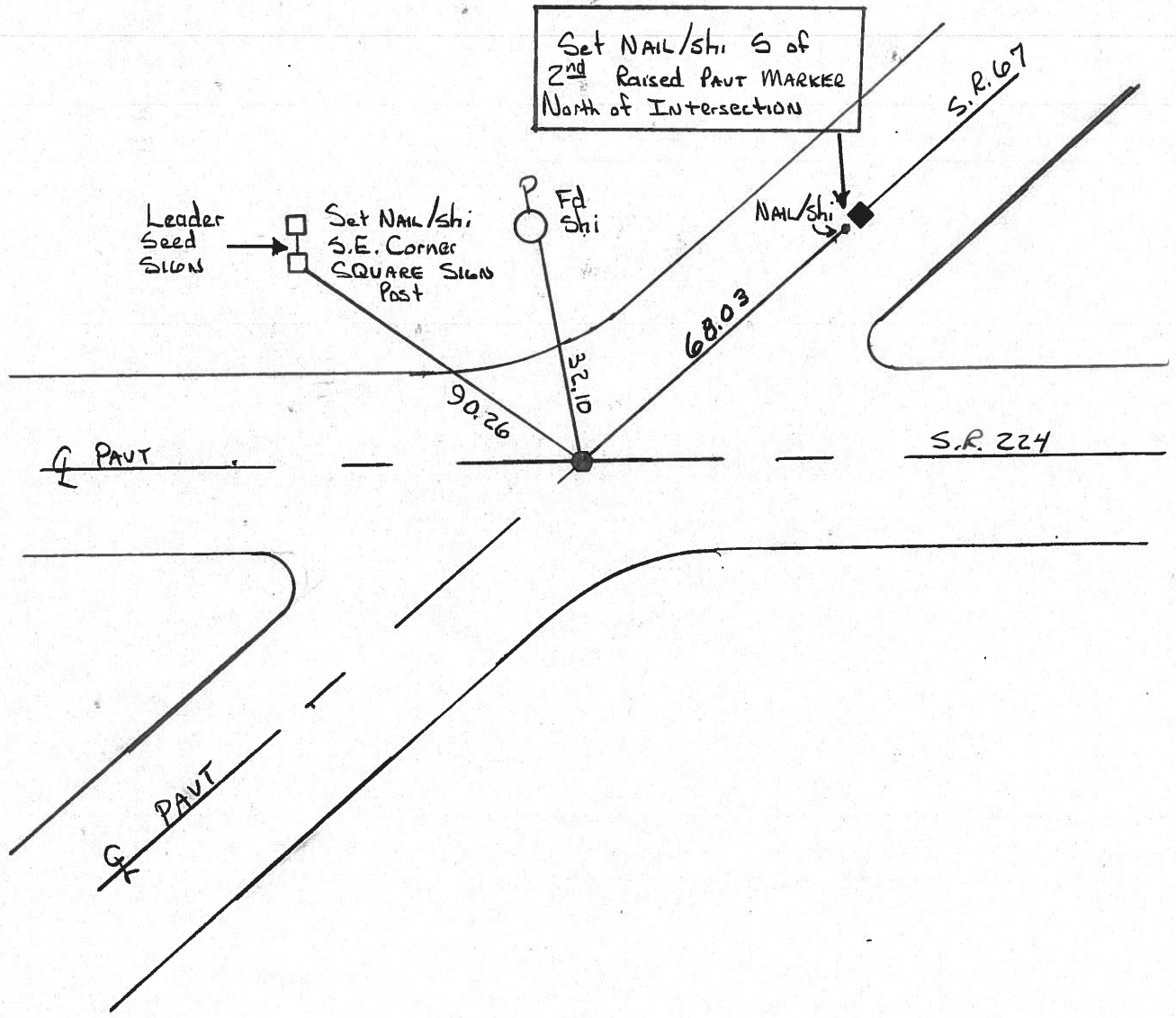
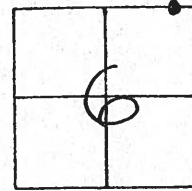
TYPE MONUMENT P.K. SHANK

ON SURFACE - ~~BELOW~~ Yes

~~LEFT - & PAV'T. - RIGHT~~ Yes - BOTH

TO EDGE PAVEMENT

S.L.M. 1047+90



O.D.O.T. DISTRICT 2 SURVEY OFFICE

PERSONNEL

REFERENCE NO. 62

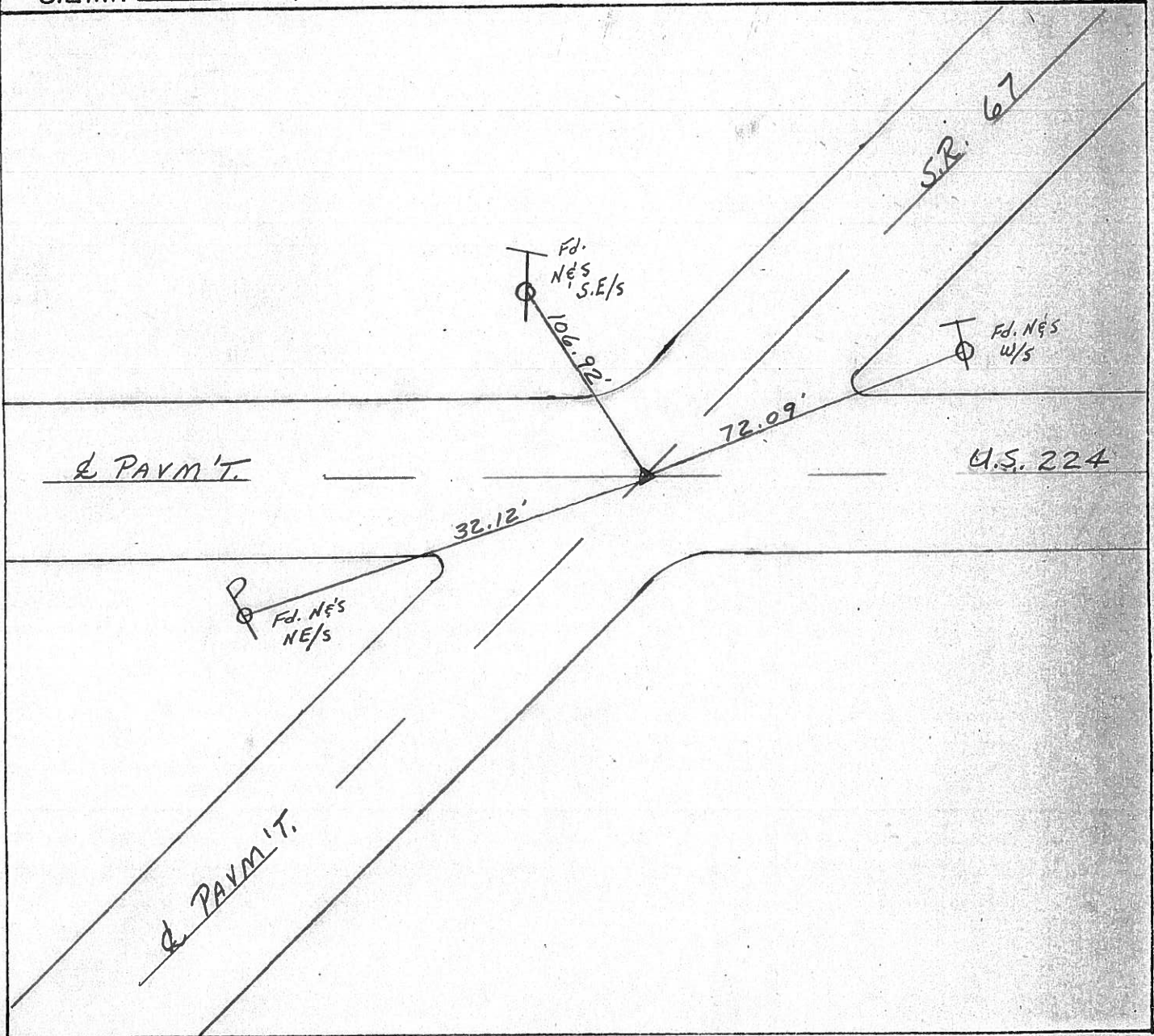
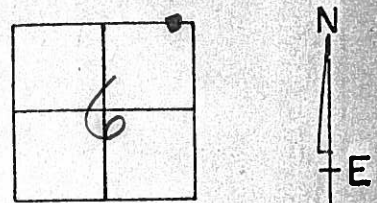
SHEET 16 OF 32

NOTES Cheney
 H.C. RIPPLE
 R.C. BARBOUR
GEYMAN

DATE 10-30-92
 WEATHER Cloudy
 TEMP. 55°

ROUTE U.S. 224
 COUNTY SENECA
 TOWNSHIP Bloom
 SECTION 6
T 1 N R 16 E

TYPE MONUMENT P.K. - TOP BROKEN OFF
 ON SURFACE - ~~BELOW~~ yes
 LEFT - C PAV'T. - RIGHT yes
10' TO RT. EDGE PAVEMENT
 S.L.M. 1046 + 49



O.D.O.T. DISTRICT 2 SURVEY OFFICE

SHEET 16

OF
HOFFMAN &
CREW
4-27-83

County Seneca S.R. 224

Date 6/24/82

Township Bloom

Weather sunny

Section 6

Temp. 68°

T. 1 N, R. 16 E

Personnel Cronin

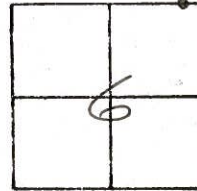
Ripple

Geyman

Mosser

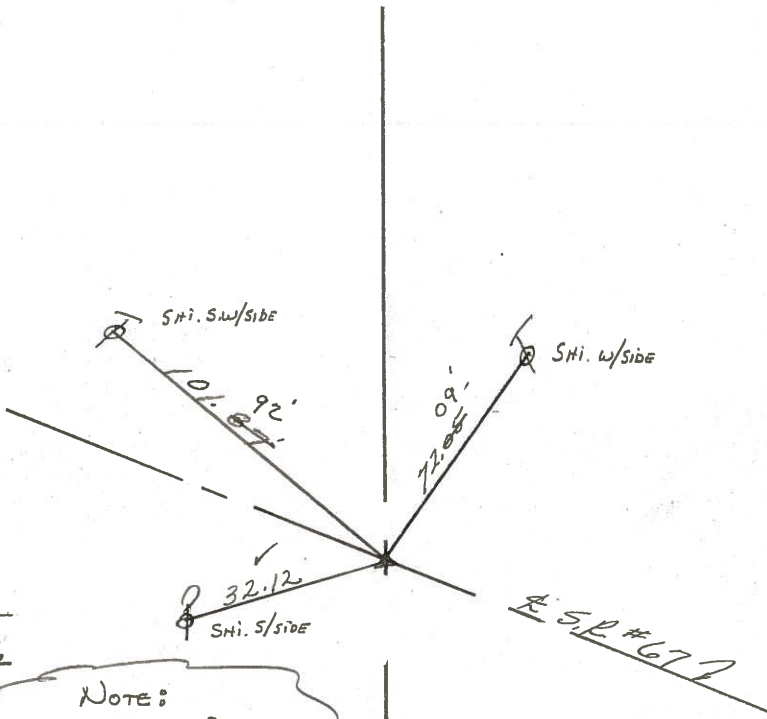
Barbour

#62



P.I.

Set P.K. (head broken off)
a top boat spike a top iron pin



NOTE:
S.L.M. FROM BRIDGE
MAKES THIS POINT
1098+71.18

E U.S. # 224

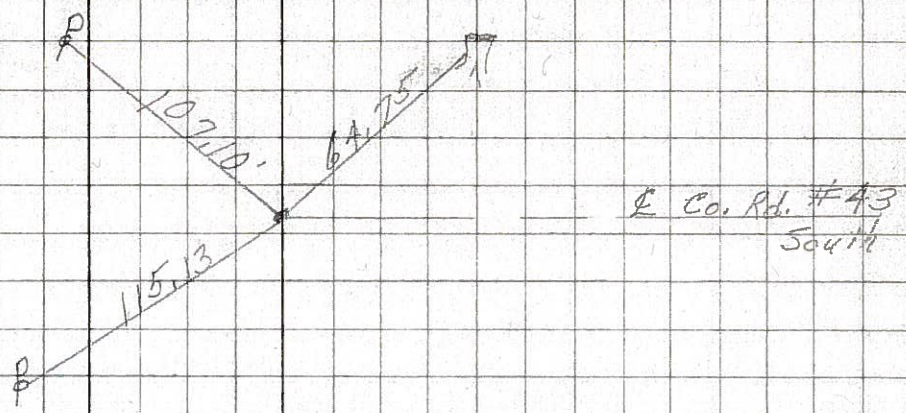
PERSONNEL	TITLE	PERSONNEL	TITLE	COUNTY	DATE	WEATHER	TEMP.
Schneider		Potts		Seneca	7-30-68	Fair	40°
Mosser				S. R. U.S. #224	3-25-68		
Barbour				SEC. S.R. #100 to Africa			
Redding							

DESCRIPTION: Ties for Control Points

(63-A)

P.O.T.
R.R. spk. 4" down
1100+
Reset small spk.

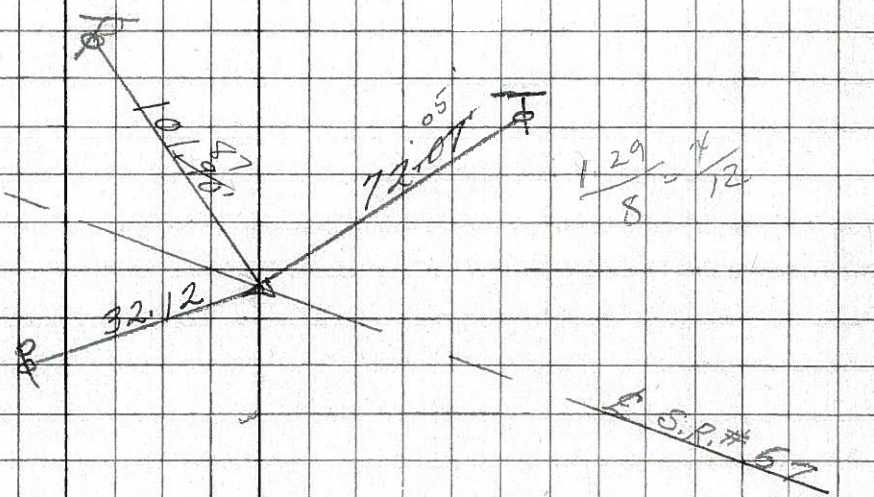
8609



(62)

P.T.
Iron Pin
Intersection U.S. #224
S.R. # 67
Reset small spk.

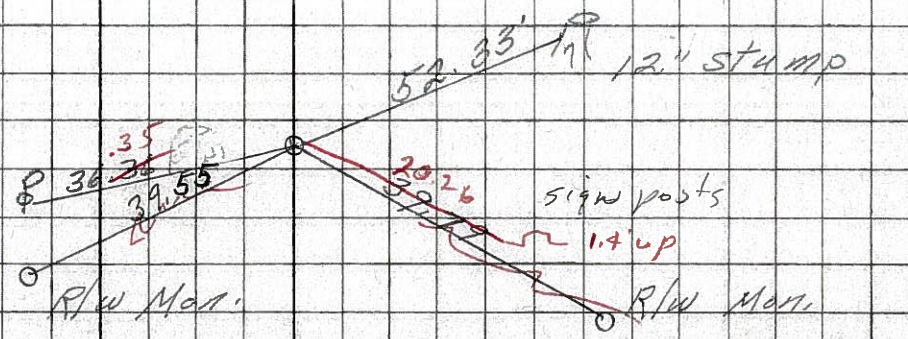
8608



(61)

P.O.T.
1089+ 01.55
Reset small spk.

8607



PERSONNEL TITLE PERSONNEL TITLE

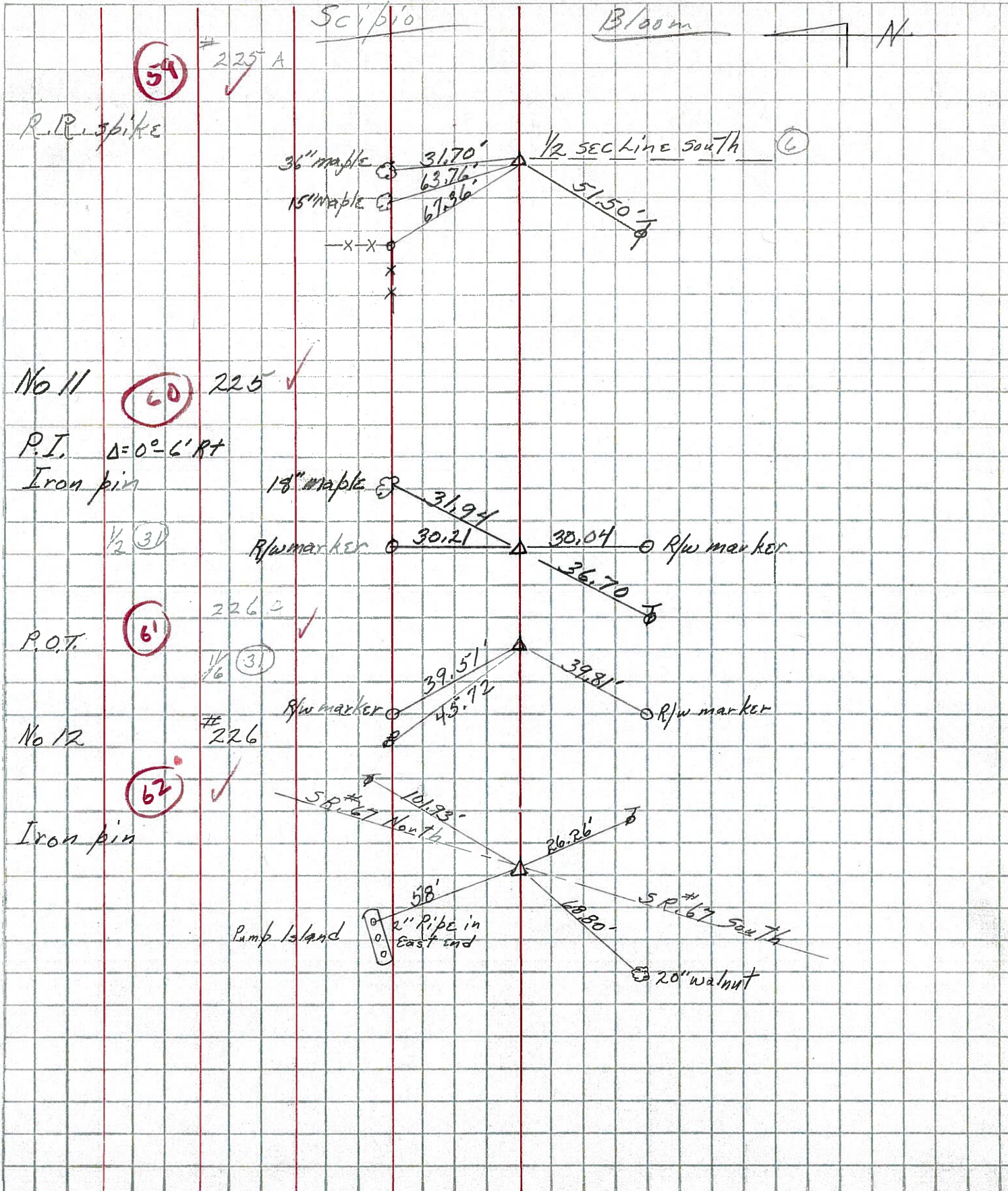
KraBill
Kowalski
Brooks

COUNTY Seneca DATE

S. R. 224 WEATHER

SEC. TEMP.

DESCRIPTION LEFT CENTER LINE RIGHT JOB NO.



PERSONNEL TITLE PERSONNEL TITLE

COUNTY Seneca DATE 11-24-53

S. R. #224 WEATHER

SEC. A TEMP.

DESCRIPTION S.H. 272

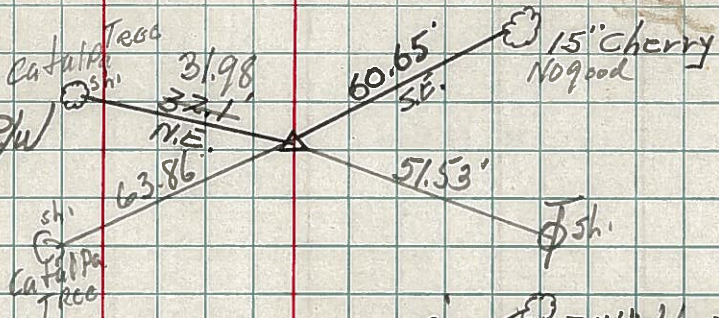
JOB NO.

LEFT

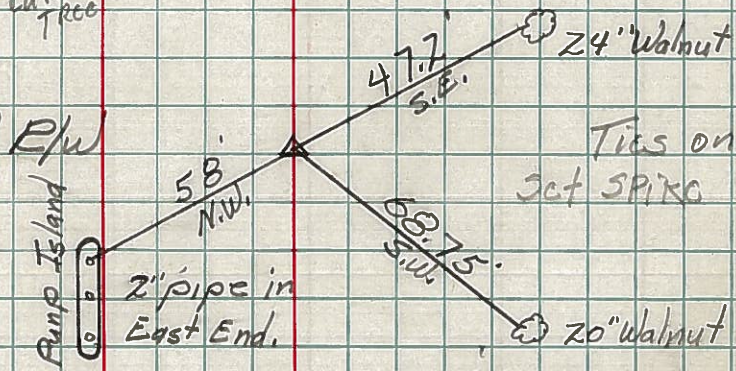
CENTER LINE

RIGHT

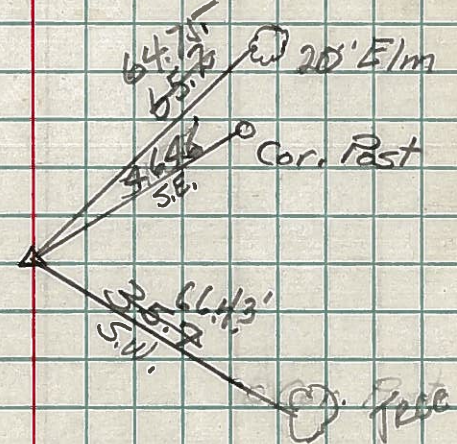
No. 11
 E.R. Spike on $\frac{1}{2}$ of R/W
 #225
 4-27-60



No. 12
 E.R. Spike on $\frac{1}{2}$ of R/W
 Center of S.H. 267
 #226
 4-27-60



No. 13
 E.R. Spike on $\frac{1}{2}$ of R/W
 #227
 OK
 4-27-60



No. 14
 E.R. Spike on $\frac{1}{2}$ of R/W
 #228
 Did not Find

