

O.D.O.T. DISTRICT 2 SURVEY OFFICE (USE ONLY)

PERSONNEL

REFERENCE NO. 63 A

SHEET 3 OF 37

NOTES RHOADES DATE 11/7/23  
 H.C. AUBLE WEATHER CLOUDY  
 R.C. ASTON TEMP. 54°  
NIESE

ROUTE US 224  
 COUNTY SENECA  
 TOWNSHIP BLOOM  
 SECTION 6

DWG BY RHOADES PID 101217

T 1 N R 16 E

TYPE MONUMENT MAG/WASHER

ON SURFACE - ~~BELOW~~ ON

OFFSET ☉ PAVEMENT ON LT : RT

10.1' TO LT EDGE PAVEMENT

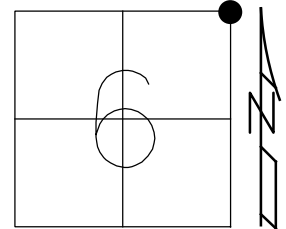
STATION: 1049+71.54

HORZ.DATUM: NAD83 2011

GEOID: NAVD88 2018

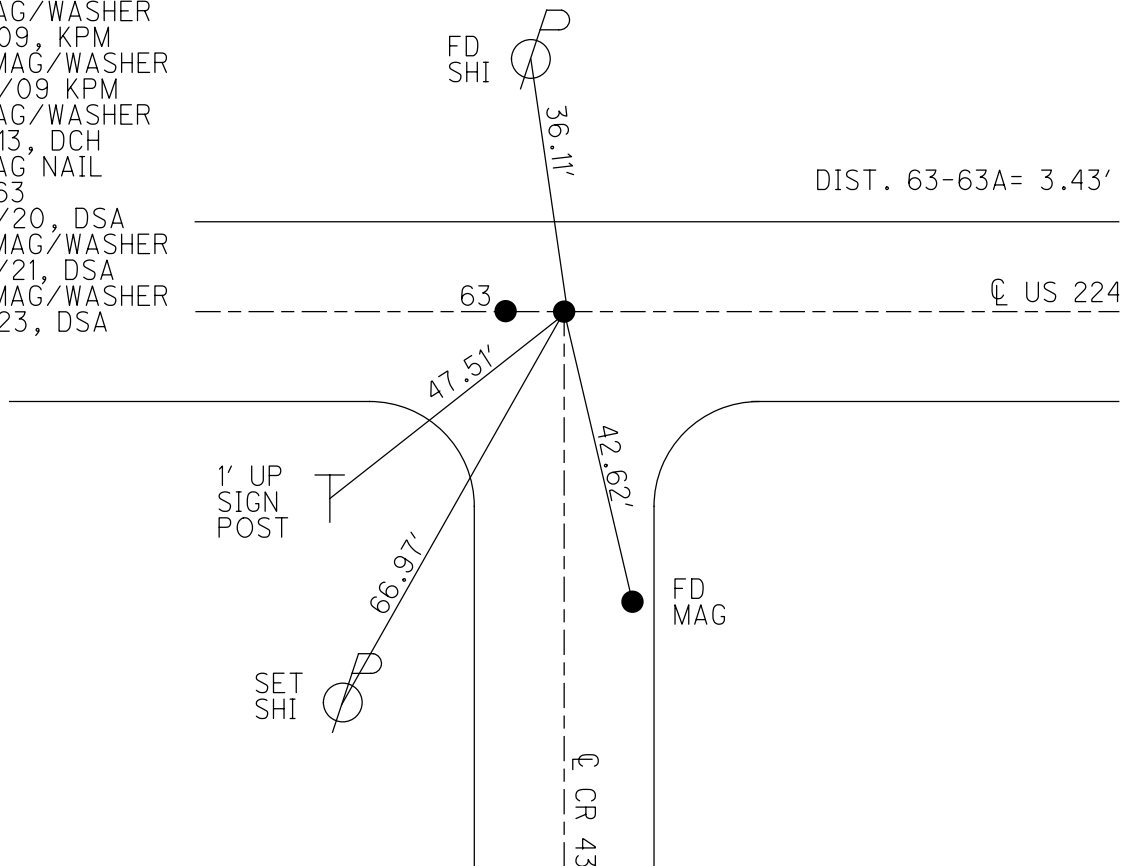
GRID: NORTHING: 515722.012

EASTING: 1815581.999



RECORD:

FD P.K./WASHER  
 6/30/92 JLR  
 SET P.K./WASHER  
 11/30/92 JLR  
 D.N.F.  
 1/12/08 KPM  
 FD MAG/WASHER  
 8/4/09, KPM  
 SET MAG/WASHER  
 10/14/09 KPM  
 FD MAG/WASHER  
 1/16/13, DCH  
 FD MAG NAIL  
 REFA63  
 8/24/20, DSA  
 SET MAG/WASHER  
 7/27/21, DSA  
 SET MAG/WASHER  
 11/7/23, DSA



O.D.O.T. DISTRICT 2 SURVEY OFFICE (USE ONLY)

PERSONNEL

REFERENCE NO. 63 A

SHEET 3 OF 33

NOTES RHOADES DATE 8/24/20  
 H.C. AUBLE WEATHER SUNNY  
 R.C. RHOADES TEMP. 74°

ROUTE US 224  
 COUNTY SENECA  
 TOWNSHIP BLOOM  
 SECTION 6  
 T 1 N R 16 E

DWG BY RHOADES PID PAVE TRAIN

TYPE MONUMENT MAG NAIL

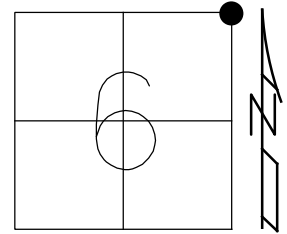
ON SURFACE - ~~BELOW~~ ON

OFFSET ☉ PAVEMENT ON LT : RT  
10.1' TO LT EDGE PAVEMENT

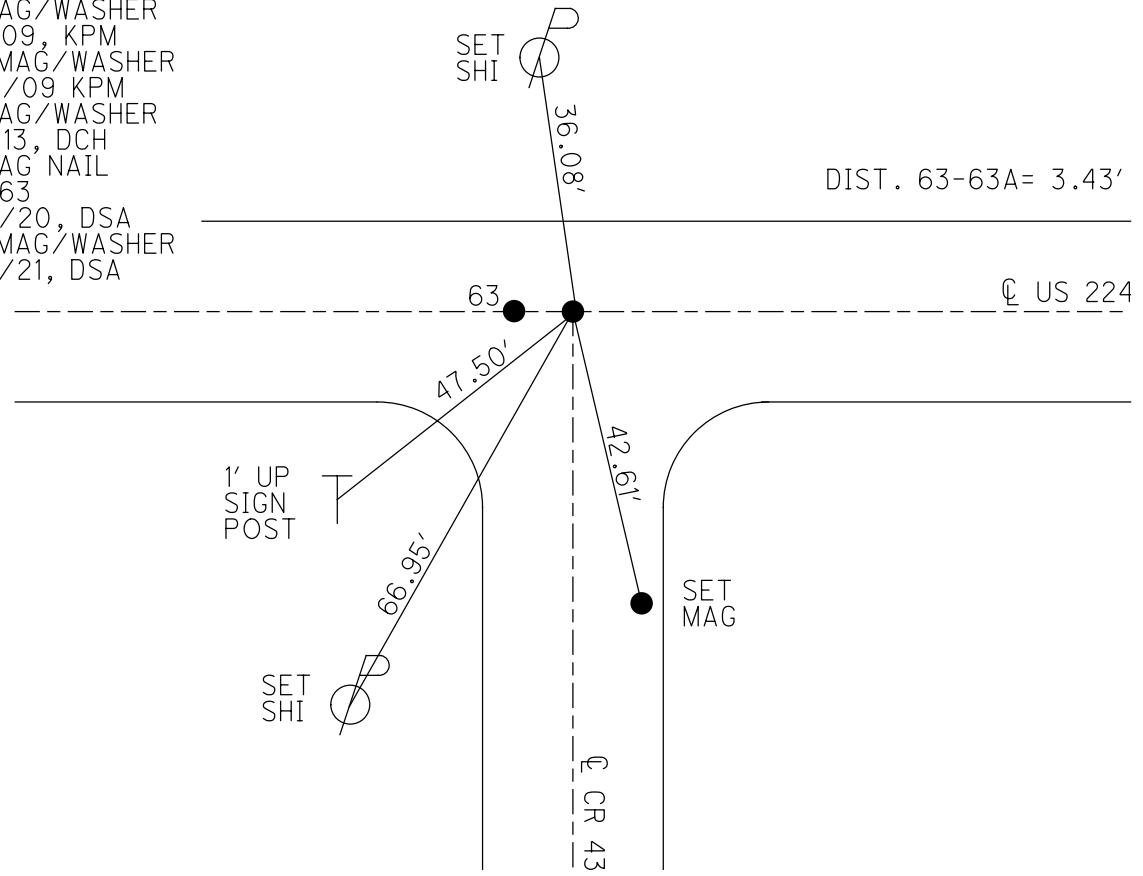
STATION: 1049+71.54

HORIZ.DATUM: NAD83 2011 GEOID: NAVD88 2012A

GRID: NORTHING: 515722.030 EASTING: 1815581.998



RECORD:  
 FD P.K./WASHER  
 6/30/92 JLR  
 SET P.K./WASHER  
 11/30/92 JLR  
 D.N.F.  
 1/12/08 KPM  
 FD MAG/WASHER  
 8/4/09, KPM  
 SET MAG/WASHER  
 10/14/09 KPM  
 FD MAG/WASHER  
 1/16/13, DCH  
 FD MAG NAIL  
 REFA63  
 8/24/20, DSA  
 SET MAG/WASHER  
 7/27/21, DSA



O.D.O.T. DISTRICT 2 SURVEY OFFICE

PERSONNEL

REFERENCE NO. 63 A

SHEET 3 OF 35

NOTES Moser

DATE 8-4-09

ROUTE US 224

H.C. Moser

WEATHER Fair

COUNTY SENECA

R.C. Piefkowski

TEMP. +40°

TOWNSHIP BLOOM

Goldberg

SECTION 6

T 1 N R 16 E

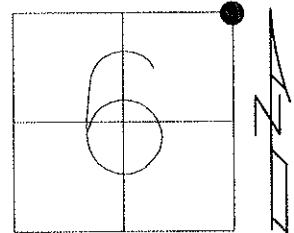
TYPE MONUMENT MAG./WASHER

ON SURFACE - ~~BELOW~~ ON

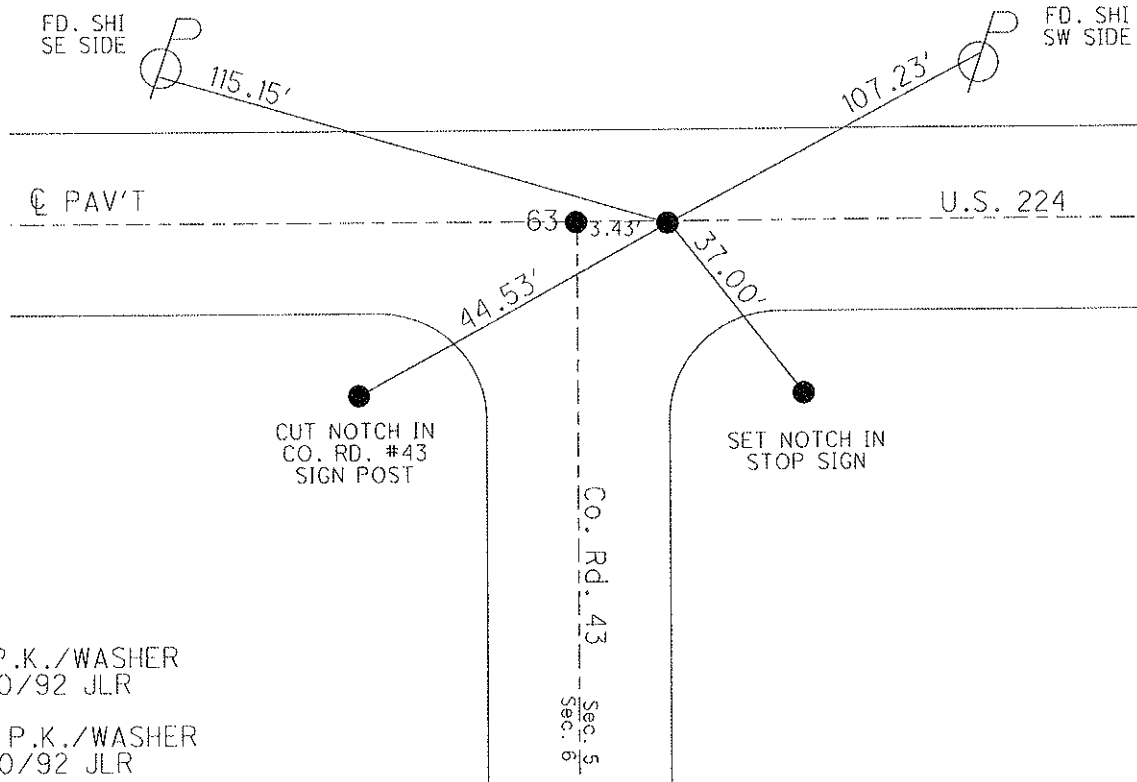
LEFT - ☉ PAV'T - RIGHT ON

10.1' TO LT. EDGE PAVEMENT

S.L.M. 104971+54



Grid: Northing: 515722.030 Easting: 1815316.291



FD P.K./WASHER  
6/30/92 JLR

SET P.K./WASHER  
11/30/92 JLR

DNF P.K./WASHER  
1/12/08 KPM

RESET MAG/WASHER  
10/14/09 KPM

O.D.O.T. DISTRICT 2 SURVEY OFFICE

PERSONNEL

REFERENCE NO. 63

SHEET 2 OF 32

NOTES Cheney

H.C. RIPPLE

R.C. BARBOUR

Geyman

DATE 16-30-92

WEATHER Cloudy

TEMP. 55°

ROUTE U.S. 224

COUNTY Seneca

TOWNSHIP Bloom

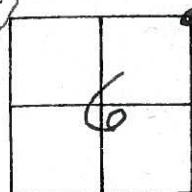
SECTION 6

T 1 N R 16 E

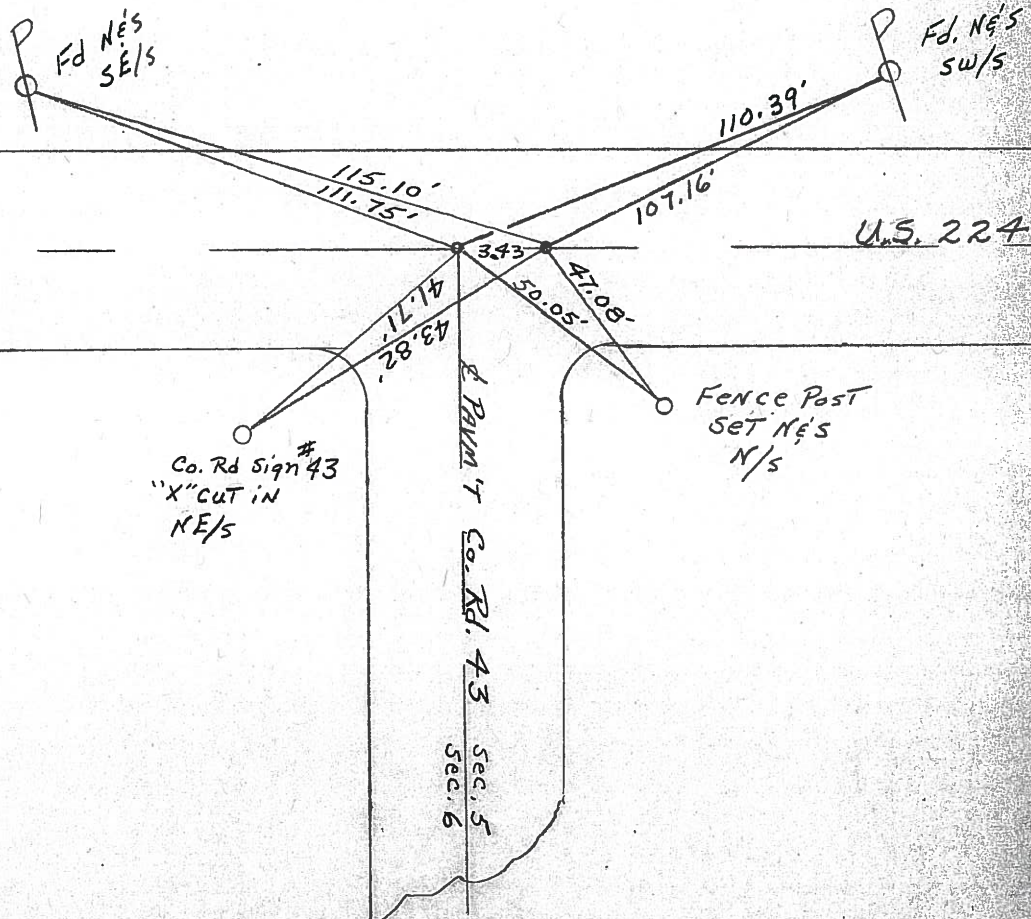
TYPE MONUMENT <sup>6-30-92</sup> Fd. P.K. & WASHER'S  
 ON SURFACE - ~~BELOW~~ yes  
~~LEFT - C. PAV'T.~~ RIGHT yes  
10' TO RT. EDGE PAVEMENT  
 S.L.M. 1049+15

SET PK & WASHER'S  
 11-30-92  
 J.L.R.

**63-A**



Record: 10-28-82  
 Set P.K. & WASHER ATOP  
 IRON PIN OR RR SPK.  
 Found 8" down 5/19/82  
 Field Book "54 (from left)  
 STATES IRON PIN



Q.D.O.T. DISTRICT 2 SURVEY OFFICE

SHEET 17 OF           

County Seneca S.R. #224

Township Bloom

Section #6 (Appears to be)

T1N, R16E

Personnel Cronin

Ripple

Geyman

Mosser

Barbour

**63-A**

Date 10/28/82

Weather sunny

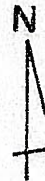
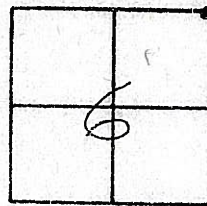
Temp. 55°

HOFFMAN &  
CREW

4-27-83

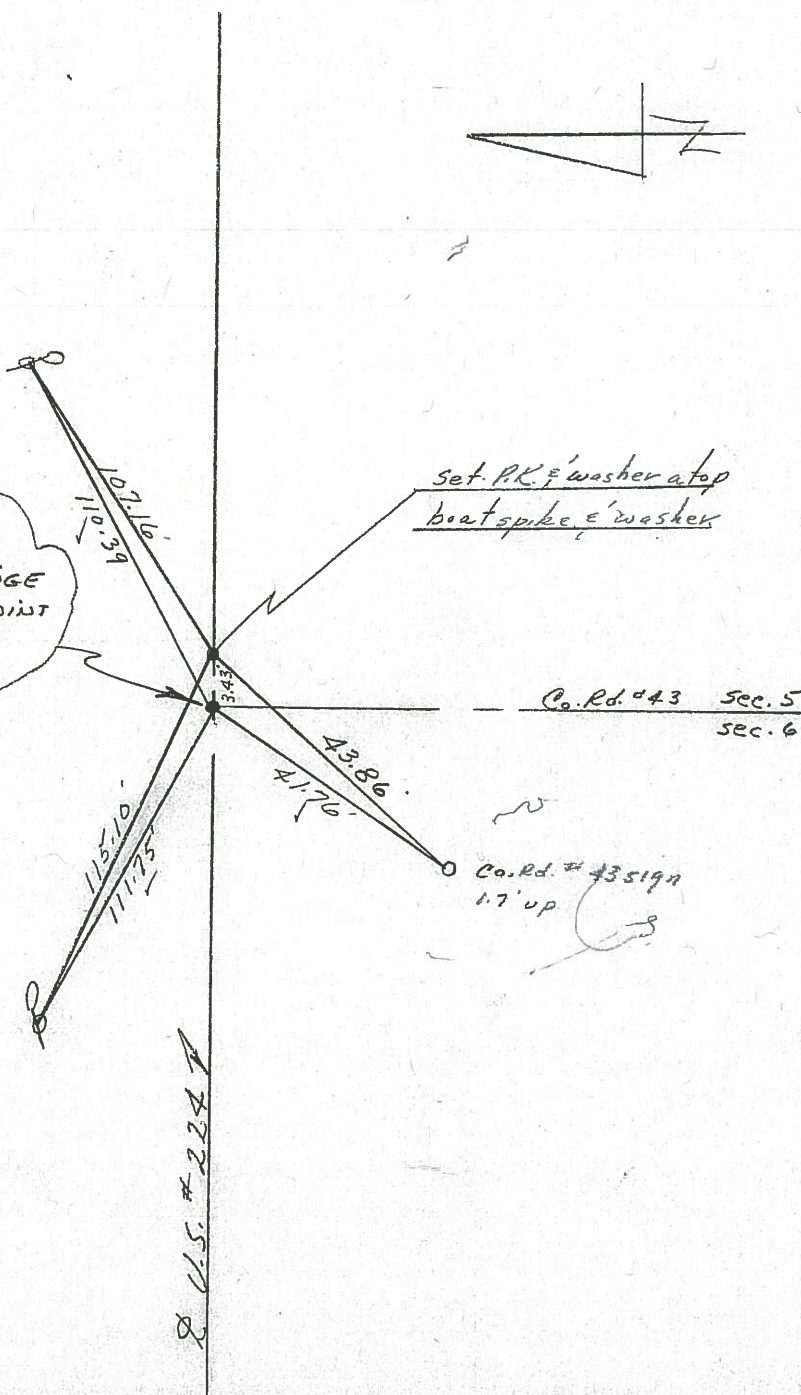
CLEAR

+65°



NOTE:  
S.L.M. FROM BRIDGE  
MAKES THIS POINT  
1101 + 33.56

set P.K. & washer  
top Iron or R.R. spike  
found 8" down (5/19/82)  
Field Book #54 (from loft)  
states Iron pin



PERSONNEL TITLE PERSONNEL TITLE  
Schneider \_\_\_\_\_ Potts \_\_\_\_\_  
Mosser \_\_\_\_\_ \_\_\_\_\_  
Barbour \_\_\_\_\_ \_\_\_\_\_  
Redding \_\_\_\_\_ \_\_\_\_\_

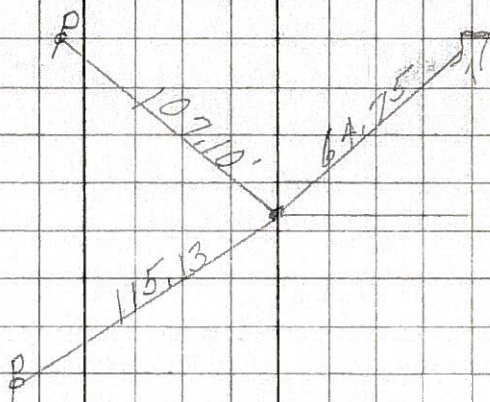
COUNTY Seneca DATE 7-30-68  
3-25-68  
 S. R. U.S. # 224 WEATHER Fair  
 SEC. S.R. #100 to Africa TEMP. 40°

DESCRIPTION Ties for Control Points JOB NO. \_\_\_\_\_

(63-A)

P.O.T.  
 R.R. spk. 4" down  
 1100+  
 Reset small spk.

8609

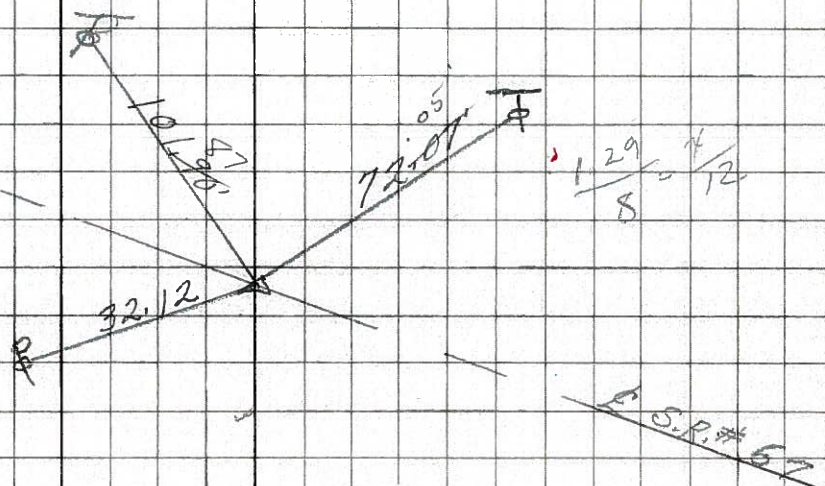


E Co. Rd. #43  
 South

(62)

P.T.  
 Iron Pin  
 Intersection U.S. # 224  
 S.R. # 67  
 Reset small spk.

8608



$\frac{1.29}{8} = \frac{1}{12}$

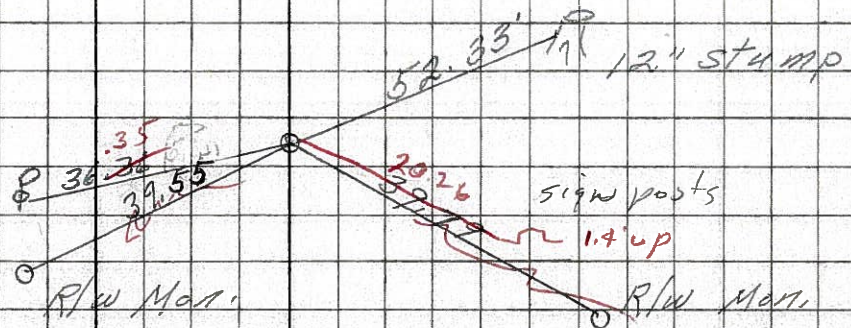
S.P. # 67

5/3/62 sunny 71°

(61)

P.O.T.  
 1089+01.55  
 Reset small spk.

8607



sign posts

1.4' up

R/W Man.

R/W Man.