

O.D.O.T. DISTRICT 2 SURVEY OFFICE (USE ONLY)

PERSONNEL

REFERENCE NO. 64 A

SHEET 4 OF 37

NOTES RHOADES  
 H.C. AUBLE  
 R.C. ASTON  
NIESE

DATE 11/7/23  
 WEATHER CLOUDY  
 TEMP. 54°

ROUTE US 224  
 COUNTY SENECA  
 TOWNSHIP SCIPPIO  
 SECTION 31

DWG BY RHOADES PID 101217

T 2 N R 16 E

TYPE MONUMENT MAG/WASHER

ON SURFACE - ~~BELOW~~ ON

OFFSET  $\odot$  PAVEMENT ON LT : RT

10.1' TO LT EDGE PAVEMENT

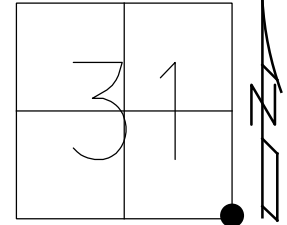
STATION: 1052+82.81

HORZ. DATUM: NAD83 2011

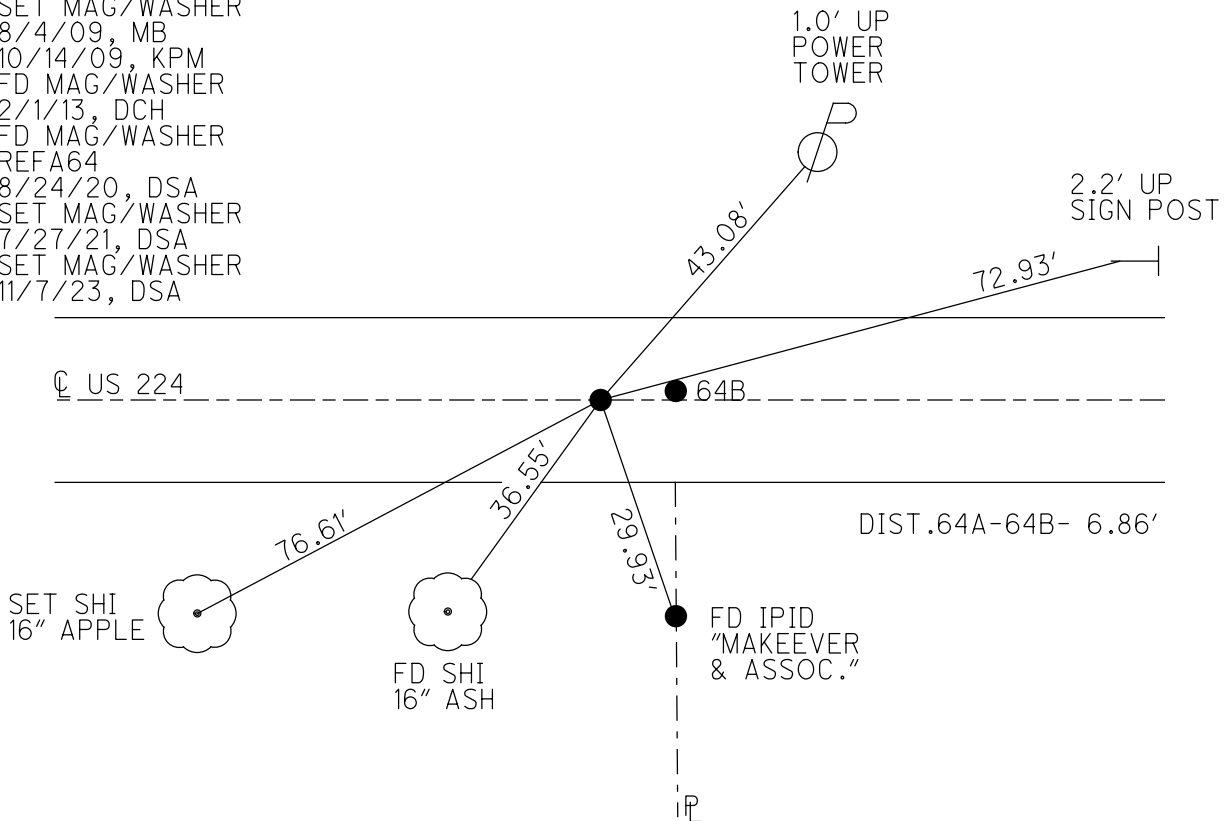
GEOID: NAVD88 2018

GRID: NORTHING: 515722.299

EASTING: 1815870.040



RECORD:  
 STA. 1102+98.08  
 FD BOAT SPIKE/WASHER  
 ATOP R.R. SPIKE  
 SET P.K./WASHER  
 10/28/82  
 FD P.K./WASHER  
 6/30/92, JLR  
 SET P.K./WASHER  
 11/30/92, JLR  
 SET MAG/WASHER  
 8/4/09, MB  
 10/14/09, KPM  
 FD MAG/WASHER  
 2/1/13, DCH  
 FD MAG/WASHER  
 REFA64  
 8/24/20, DSA  
 SET MAG/WASHER  
 7/27/21, DSA  
 SET MAG/WASHER  
 11/7/23, DSA



DIST. 64A-64B- 6.86'

O.D.O.T. DISTRICT 2 SURVEY OFFICE (USE ONLY)

PERSONNEL

REFERENCE NO. 64 A

SHEET 4 OF 33

NOTES RHOADES

DATE 8/24/20

ROUTE US 224

H.C. AUBLE

WEATHER SUNNY

COUNTY SENECA

R.C. RHOADES

TEMP. 74°

TOWNSHIP SCIPIO

SECTION 31

DWG BY NIESE PID PAVE TRAIN

T 2 N R 16 E

TYPE MONUMENT MAG/WASHER

ON SURFACE - ~~BELOW~~ ON

OFFSET ☉ PAVEMENT ON LT : RT

10.1' TO LT EDGE PAVEMENT

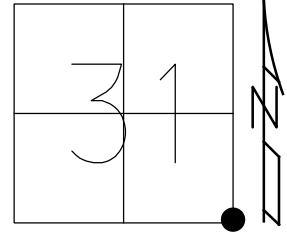
STATION: 1052+82.81

HORZ.DATUM: NAD83 2011

GEOID: NAVD88 2012A

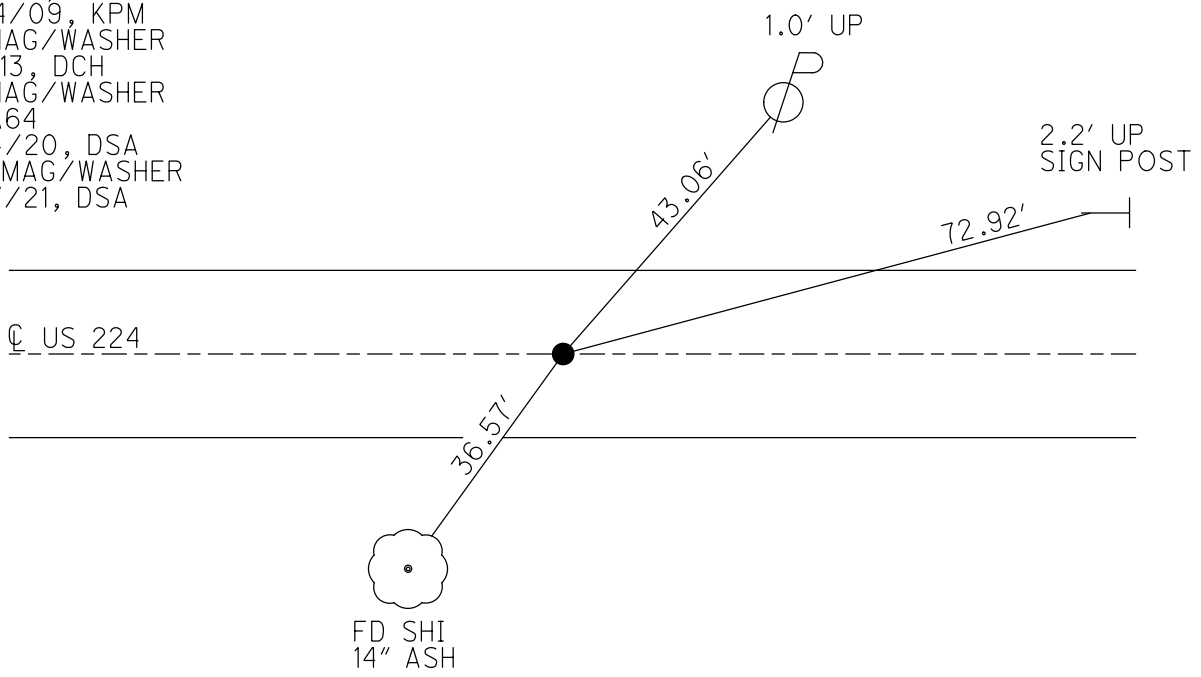
GRID: NORTHING: 515722.377

EASTING: 1815869.999



RECORD:

- STA. 1102+98.08
- FD BOAT SPIKE/WASHER
- ATOP R.R.SPIKE
- SET P.K./WASHER
- 10/28/82
- FD P.K./WASHER
- 6/30/92, JLR
- SET P.K./WASHER
- 11/30/92, JLR
- SET MAG/WASHER
- 8/4/09, MB
- 10/14/09, KPM
- FD MAG/WASHER
- 2/1/13, DCH
- FD MAG/WASHER
- REFA64
- 8/24/20, DSA
- SET MAG/WASHER
- 7/27/21, DSA



O.D.O.T. DISTRICT 2 SURVEY OFFICE

PERSONNEL

REFERENCE NO. 64 A

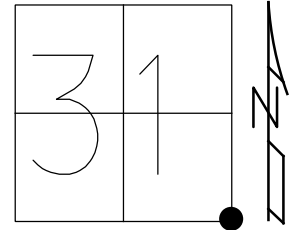
SHEET 4 OF 35

NOTES            MOSER  
 H.C.            MOSER  
 R.C.            PIETKOWSKI  
                  GOLDBERG

DATE            8-4-09  
 WEATHER            FAIR  
 TEMP.            +40°

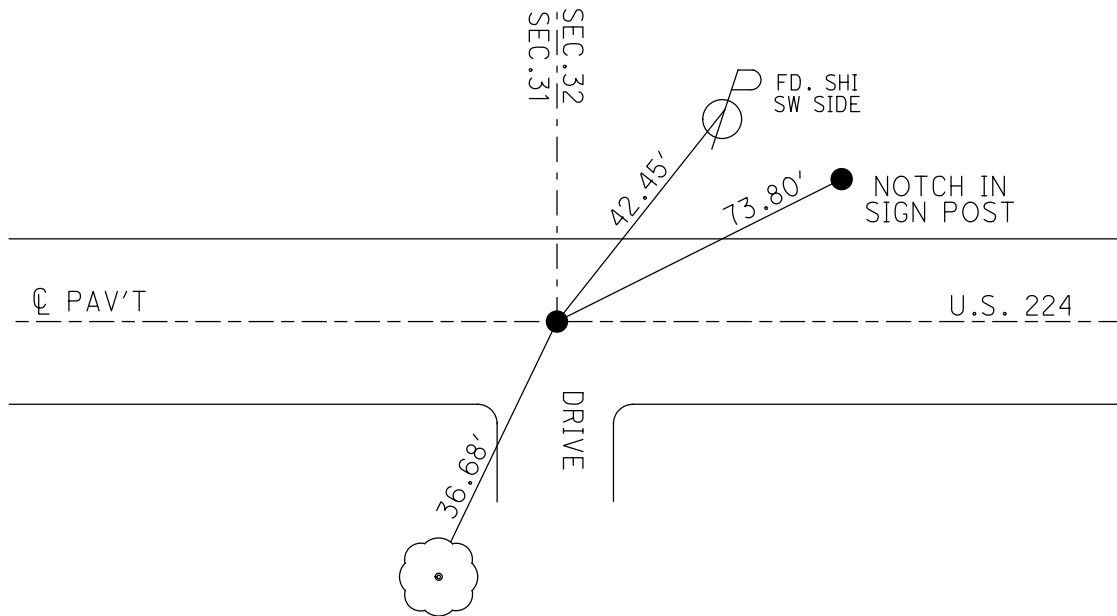
ROUTE            US 22  
 COUNTY            SENECA  
 TOWNSHIP            SCIPIO  
 SECTION            31  
 T 2 N R 16 E

TYPE MONUMENT            MAG/WASHER  
 ON SURFACE - ~~BELOW~~            ON  
 LEFT -            PAV'T - RIGHT            ON  
10.1' TO LT EDGE PAVEMENT  
 S.L.M.            1052+82.81



GRID: NORTHING: 515722.377 EASTING: 1815869.999

RECORD: 10-28-82  
 STA 1102+98.08 SET PK&WASHER  
 ATOP BOAT SPK&WASHER ATOP  
 RR SPK. HUB-FIELD BOOK #54  
 (FROM LOFT).



FD P.K./WASHER  
 6/30/92 JLR

SET P.K./WASHER  
 11/30/92 JLR

SET MAG/WASHER  
 8/4/09 MB

RESET MAG/WASHER  
 10/14/09 KPM

NAIL SET  
 IN TREE

FD MAG/WASHER  
 1/15/13, SDC  
 GPS, REFA64  
 2/1/13, DCH

O.D.O.T. DISTRICT 2 SURVEY OFFICE

PERSONNEL

REFERENCE NO. 64 A

SHEET 4 OF 35

NOTES Moser

DATE 8-4-09

ROUTE US 22

H.C. Moser

WEATHER Fair

COUNTY SENECA

R.C. Pietkowski

TEMP. +40°

TOWNSHIP SCIPIO

Goldberg

SECTION 31

T 2 N R 16 E

TYPE MONUMENT MAG/WASHER

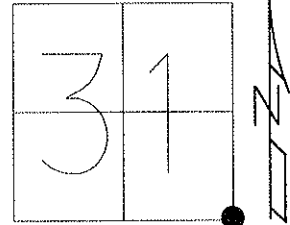
ON SURFACE - ~~BELOW~~ ON

LEFT - ☉ PAV'T - RIGHT ON

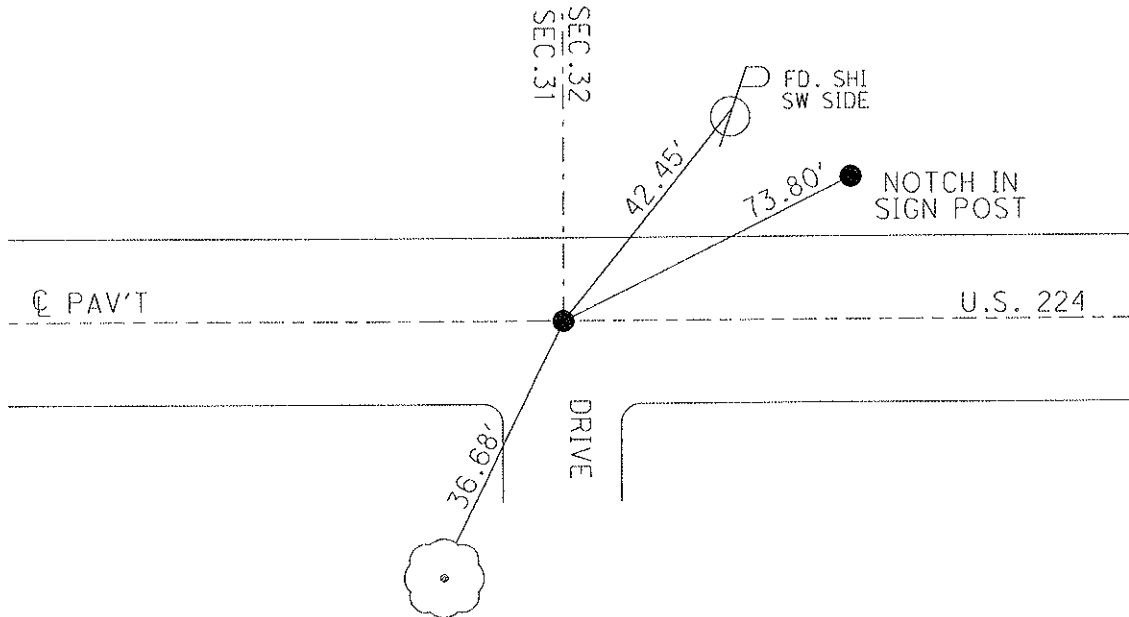
10.1' TO LT EDGE PAVEMENT

S.L.M. 1052+56.17

Grid: Northing: 515722.378 Easting: 1815870.017



RECORD: 10-28-82  
 STA 1102+98.08 SET PK&WASHER  
 ATOP BOAT SPK&WASHER ATOP  
 RR SPK. HUB-FIELD BOOK #54  
 (FROM LOFT).



FD P.K./WASHER  
 6/30/92 JLR

SET P.K./WASHER  
 11/30/92 JLR

SET MAG/WASHER  
 8/4/09 MB

RESET MAG/WASHER  
 10/14/09 KPM

O.D.O.T. DISTRICT 2 SURVEY OFFICE

PERSONNEL

REFERENCE NO. 64 A SHEET 3 OF 32

NOTES Cheney  
 H.C. RIPPLE  
 R.C. BARBOUR  
Geyman

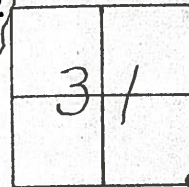
DATE 6-30-92  
 WEATHER Cloudy  
 TEMP. 55°

ROUTE U.S. 224  
 COUNTY Seneca  
 TOWNSHIP Scipio  
 SECTION 31  
T.2 N R.16 E

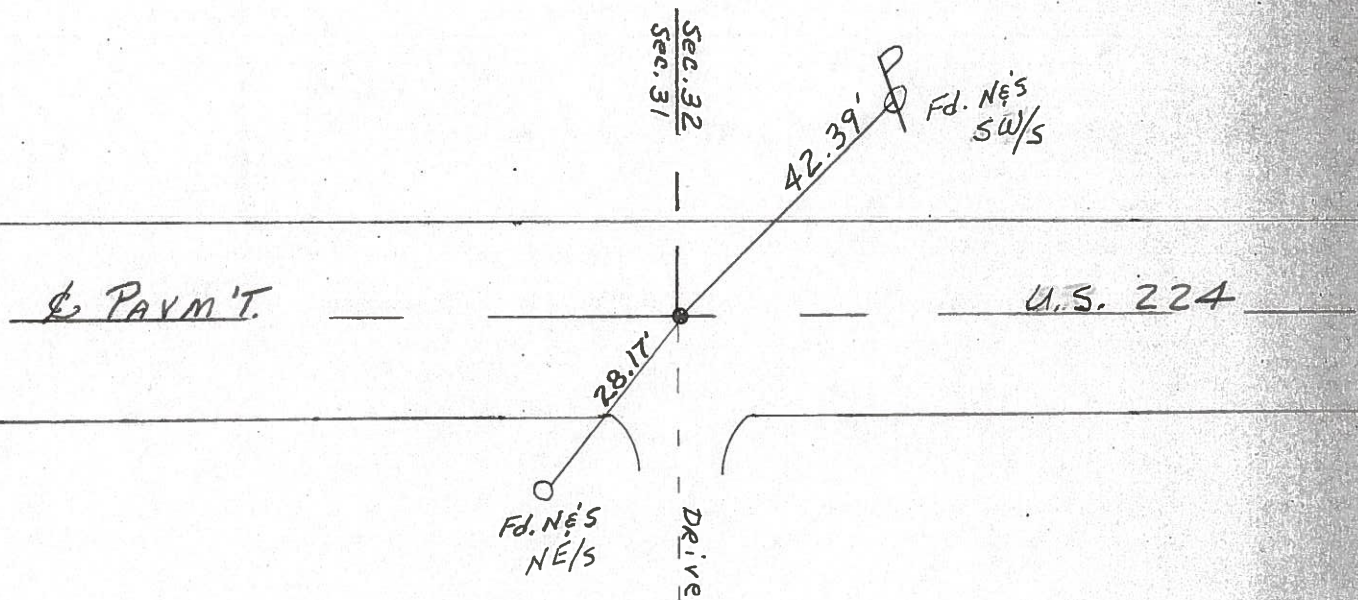
TYPE MONUMENT <sup>6-30-92</sup> F.d. P.K. & washer - set P.K. & washer  
 ON SURFACE - ~~BELOW~~ yes  
~~LEFT - & PAV'T. - RIGHT~~ yes  
10' TO RT. EDGE PAVEMENT  
 S.L.M. 1052+07

set P.K. & washer  
 11-30-92  
 J.L.R.

64-A



Record: 10-28-82  
 STA. 1102+98.08 set P.K. & washer  
 A Top boat spk. & washer A Top  
 RR/spk, Hub-Field Book #54  
 (from left)



County Seneca S.R. # 224

Date 10/28/82

Township Scipio

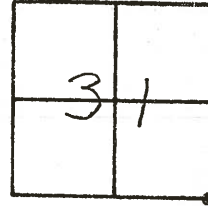
Weather sunny

Section 31

Temp. 55°

T2N, R16E

Personnel Cronin



Ripple

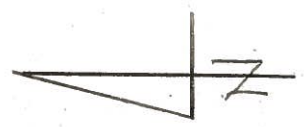
Geyman

Mosser

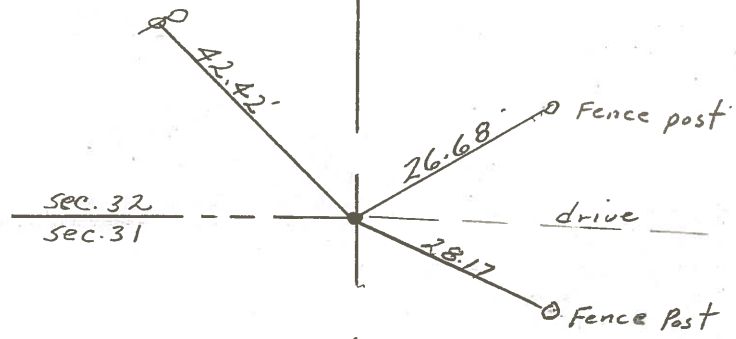
Barbour

~~63-A~~

64-A



- 1102+98.08
- set P.K. & washer atop
- boat spike & washer atop
- P.R. spike
- lub- Field Book #54 (from left)



U.S. #224

PERSONNEL TITLE PERSONNEL TITLE

COUNTY Seneca DATE 3-25-68

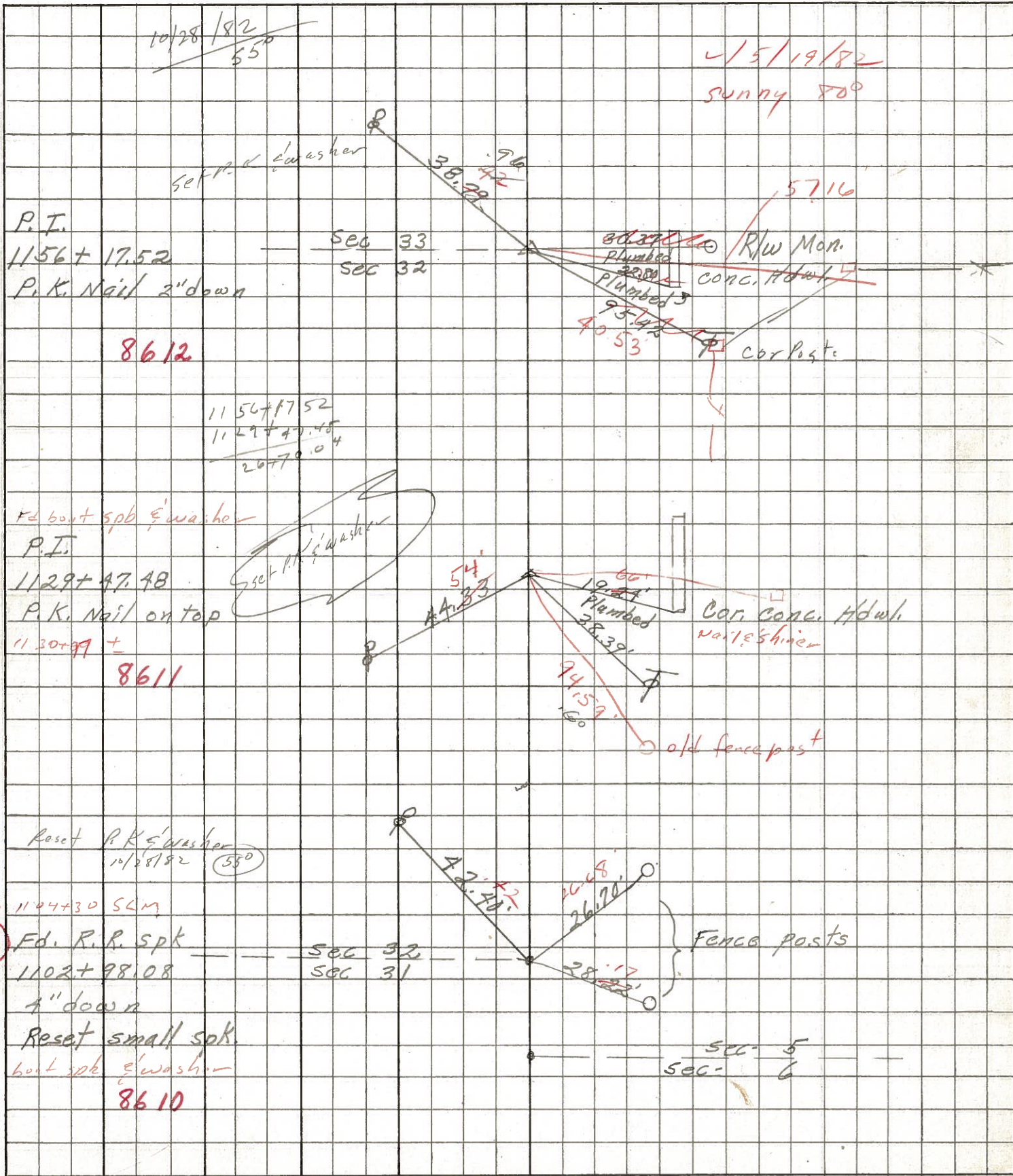
Schneider  
Mossler  
Barbour  
Potts

S. R. U.S. #224 WEATHER Fair  
SEC. S.R. #100 to Attica TEMP. 40°

DESCRIPTION Ties for Control Points

JOB NO.

LEFT CENTER LINE RIGHT



(66)

(65)

(64-A)

PERSONNEL TITLE PERSONNEL TITLE

COUNTY Seneca DATE

Harbille  
Kowaleski  
Brooks

S. R. 224 WEATHER

SEC. TEMP.

DESCRIPTION LEFT CENTER LINE RIGHT JOB NO.

